

WORLD METEOROLOGICAL ORGANIZATION

RA-V-PIW-3/Doc. 5
(14.XI.2001)

RA-V WORKING GROUP ON THE PLANNING
AND IMPLEMENTATION OF THE WWW

ITEM: 5

THIRD MEETING
SYDNEY, 3 to 7 DECEMBER 2001

ENGLISH ONLY

MONITORING OF THE OPERATION OF THE WWW
(Submitted by the Secretariat)

Summary and purpose of document

This document includes an analysis of the monitoring of the availability of SYNOP and TEMP reports from the RBSN stations located in Region V.

ACTION PROPOSED

The Meeting is invited to review the analysis of the monitoring of the availability of SYNOP and TEMP reports from the RBSN stations located in Region V, and to recommend remedial action as required.

1. Information on the availability of SYNOP and TEMP reports from the RBSN station at MTN centres during the last exercises of the Annual Global Monitoring (AGM) and of the Special MTN monitoring is given in the Tables I to VIII, and Figures I and II.

SYNOP reports

2. The average availability of SYNOP reports during the October 2000 AGM and the 2001 SMM exercises is 64 per cent.

3. The apparent decrease from 72 to 51 per cent (see Table I) in the availability of SYNOP reports from Region V from 1995 to 1996 is the consequence of a change in the method of counting the reports introduced in 1996 by MTN centres. As from 1996, the MTN centres have been only counting the reports that are made at the main synoptic hours. Table I shows that the number of RBSN stations in Region V that implemented observation programmes at the main synoptic hours has been steadily increasing from 1998. It is also noted that the availability had been higher during April and July than during February and October.

4. The analysis of SYNOP in Table V of the October 2000 AGM and the 2001 SMM exercises shows that:

- No SYNOP reports were received from East Timor, Papua New Guinea and Niue,
- Less than 50 per cent of the SYNOP reports were received from Banaba (91533) (1%), Nauru (48%), Samoa and American Samoa (42%), Solomon Islands (21%), Tokelu and Swain Island (37%), and 44 islands in the Pacific Ocean North of the equator (35%).

No SYNOP reports were received from 58 stations. These silent stations are listed in Table VII.

5. Table III shows that 66 per cent of the SYNOP reports were received for 00 and 06 UTC, while 60 per cent of the SYNOP reports were received for 12 and 18 UTC. There are fewer reports available by night-time.

6. During the October 2000 AGM, 58 per cent of the SYNOP reports were received within one hour after the observation time, 62 per cent within two hours and 63 per cent within six hours.

TEMP reports

7. The average availability of TEMP reports during the October 2000 AGM and the 2001 SMM exercises is 58 per cent. Table II shows an increase in the availability of TEMP reports from 52 per cent to 58 per cent during the period 1992-2001.

8. The analysis of TEMP in Table VI of the October 2000 AGM and the 2001 SMM exercises shows that:

- No TEMP reports were received from Nauru, Malden Island (91902), Phoenix Islands Solomon Islands and Vanuatu,
- Less than 50 per cent of the TEMP reports were received from Fiji (50%), Indonesia (11%), Kiribati (30%), Papua New Guinea (9%), Philippines (4%) and Tuvalu (23%).

No TEMP reports were received from 12 stations. These silent stations are listed in Table VII.

9. Table IV shows that 73 per cent of the TEMP reports were received for 00 UTC, while 43 per cent of the TEMP reports were received for 12 UTC. There are much fewer reports available by night-time.

10. During the October 2000 AGM, 51 per cent of the TEMP reports were received within two hours after the observation time and 58 per cent within 12 hours.

Table 1 - Percentage of SYNOP reports received during the 1992 to 2000 AGM, and the 2000 and 2001 SMM from the RBSN stations located in Region V

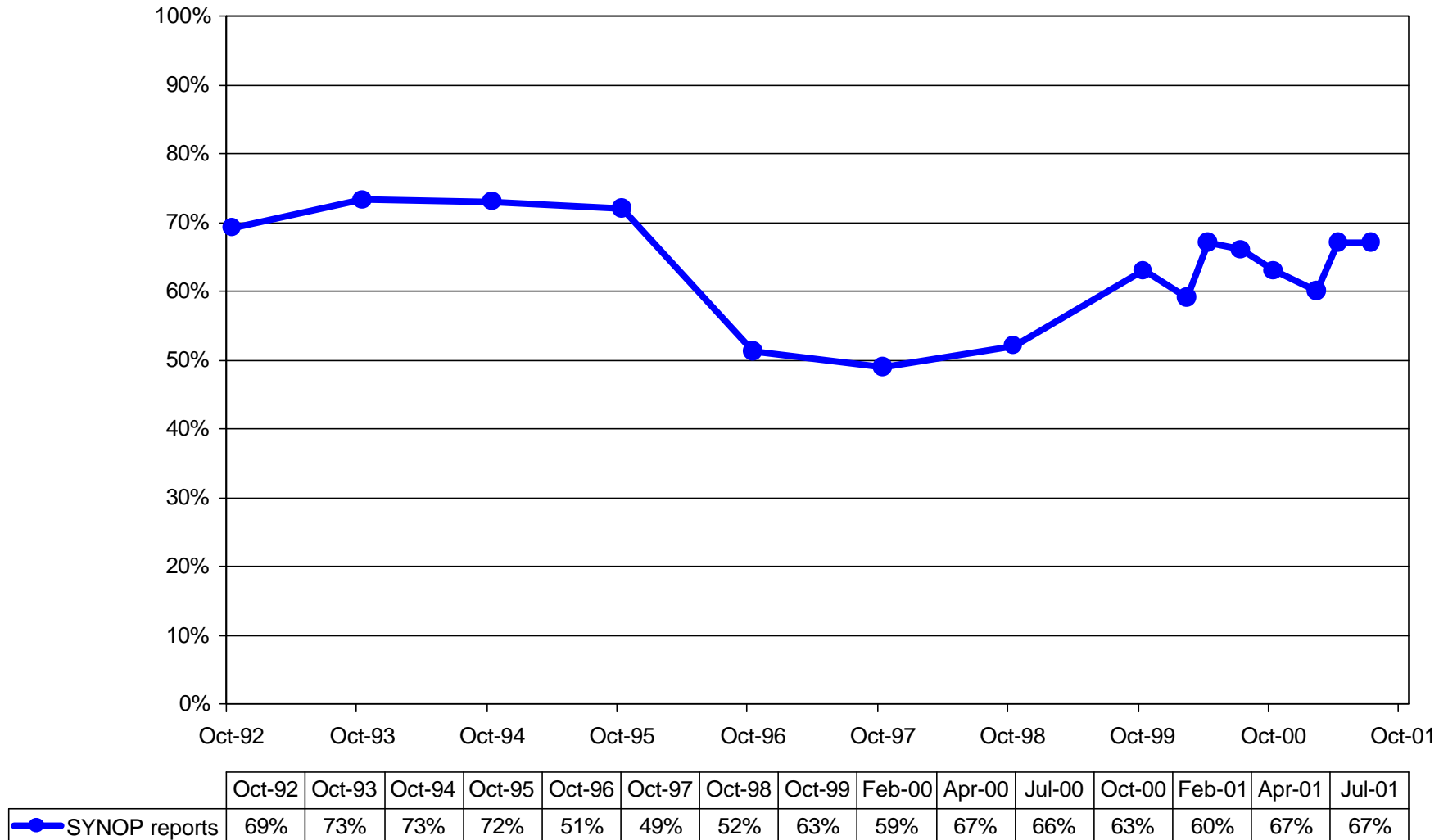
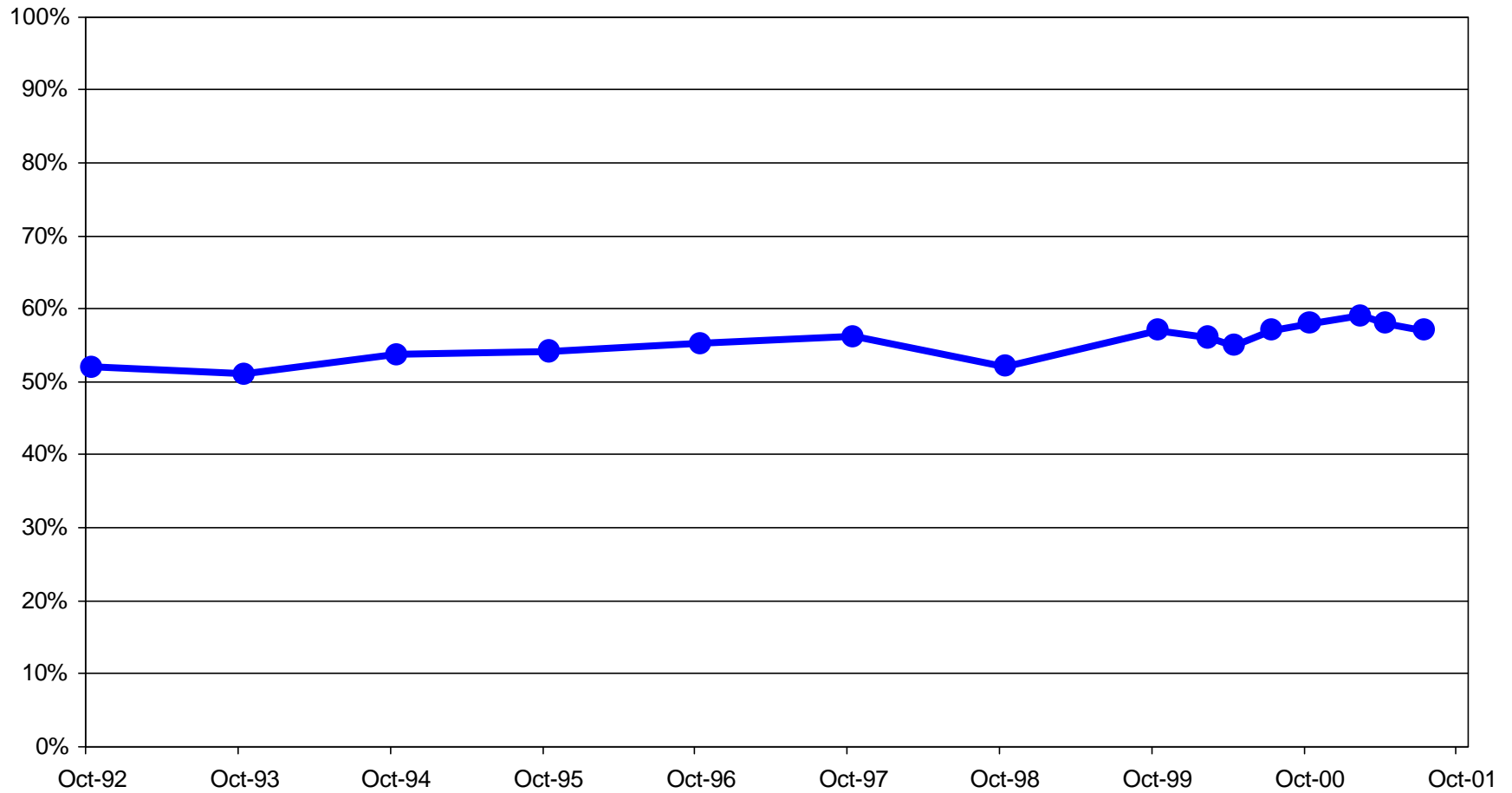
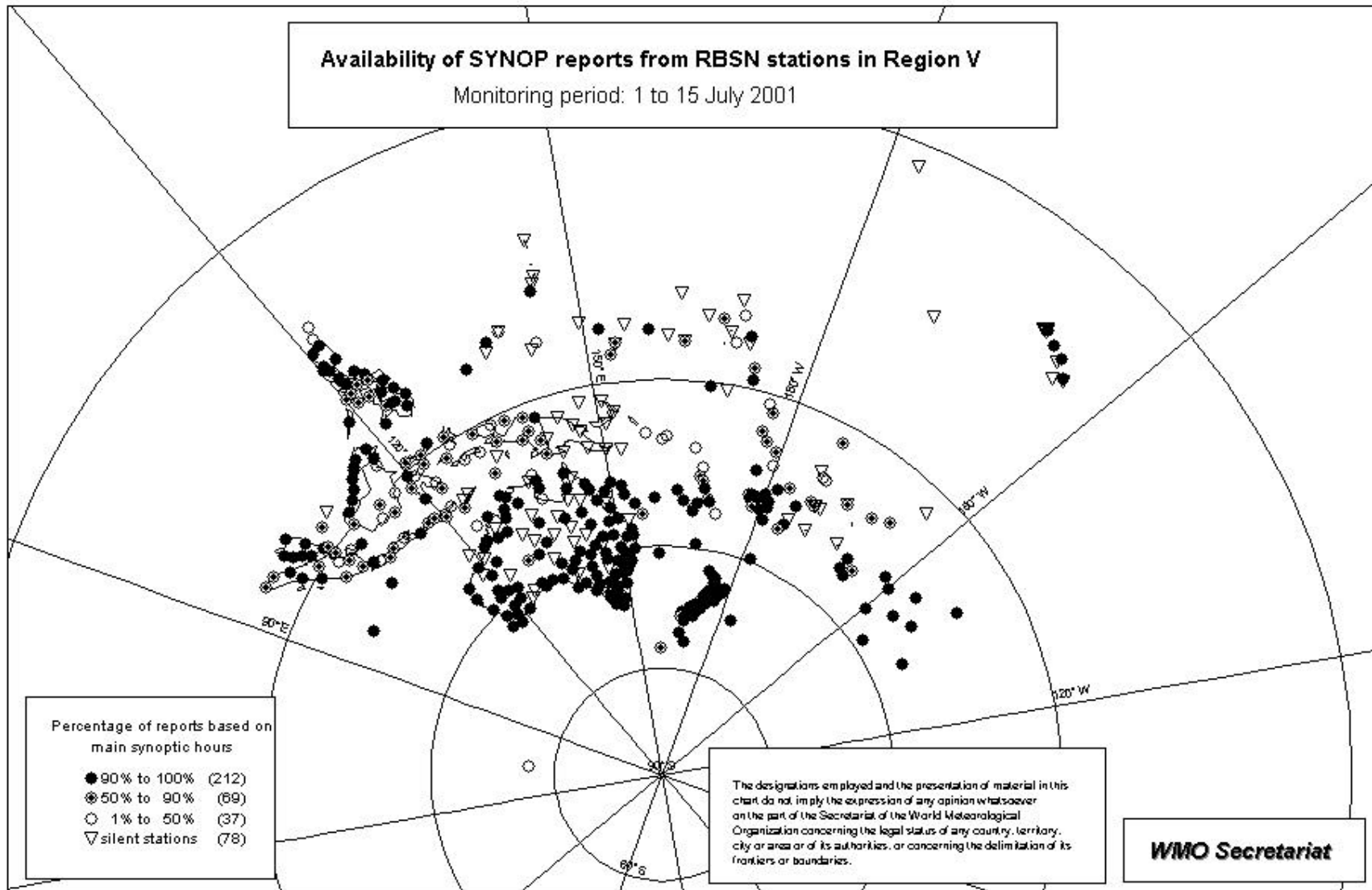
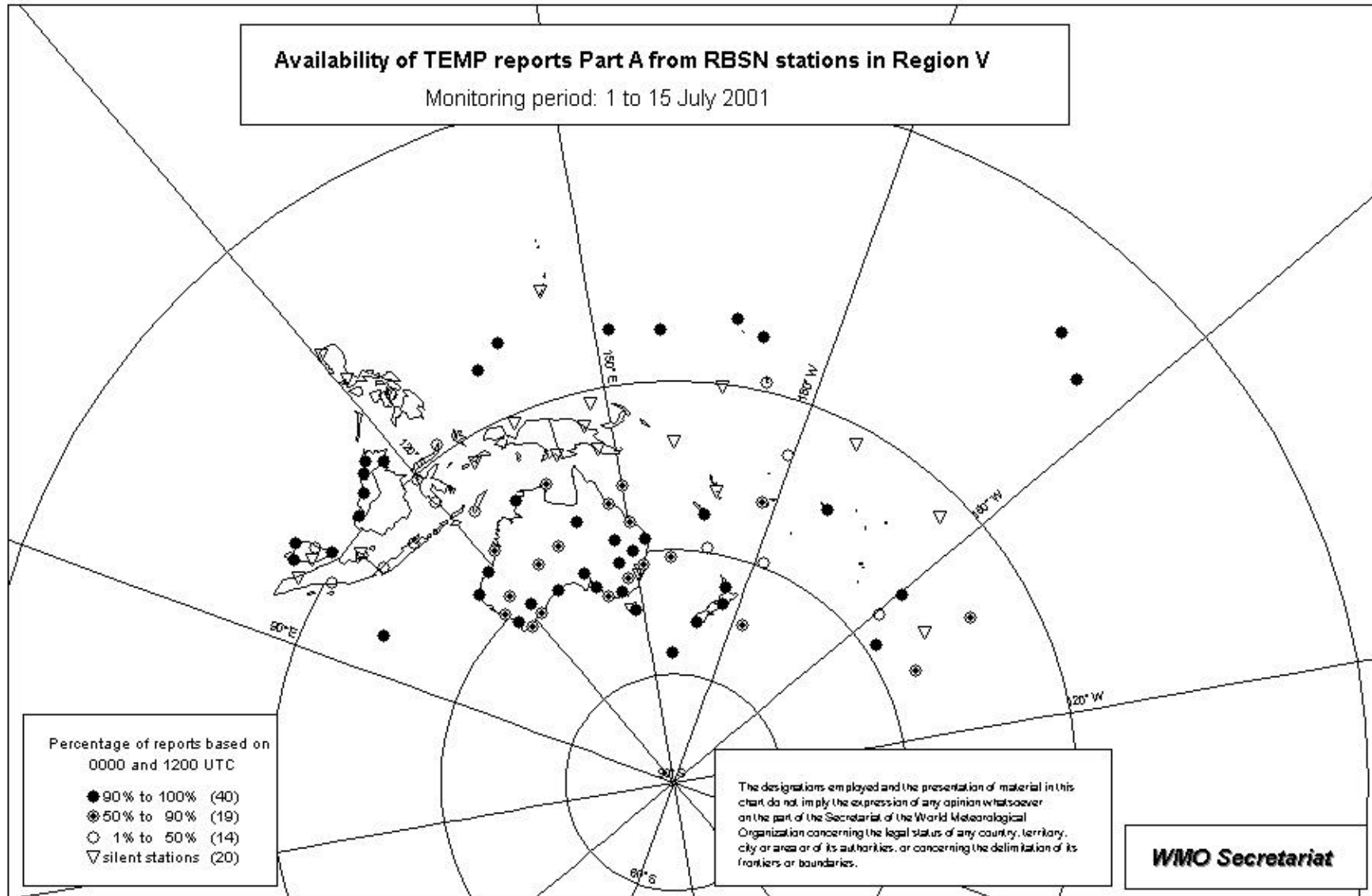


Table 2 - Percentage of TEMP reports received during the 1992 to 2000 AGM, and the 2000 and 2001 SMM from the RBSN stations located in Region V



	Oct-92	Oct-93	Oct-94	Oct-95	Oct-96	Oct-97	Oct-98	Oct-99	Feb-00	Apr-00	Jul-00	Oct-00	Feb-01	Apr-01	Jul-01
● TEMP reports	52%	51%	54%	54%	55%	56%	52%	57%	56%	55%	57%	58%	59%	58%	57%





RESULTS OF THE ANNUAL GLOBAL MONITORING OF THE OPERATION OF THE WWW

Availability of SYNOP reports from Region V (Format 1)

Monitoring period: 1 to 15 October 2000

(a) Geographical location	(b) Number of stations in the RBSN	(c) Monitoring period (days) NMC RTH MTN	(d) Stations monitored (%) NMC RTH MTN	Percentage of reports expected from implemented stations (reference Volume A edition July 2000) and actually received at centres (within 6 hours of the observation time)				
				(e) 0000 UTC Impl NMC RTH MTN	(f) 0600 UTC Impl NMC RTH MTN	(g) 1200 UTC Impl NMC RTH MTN	(h) 1800 UTC Impl NMC RTH MTN	(i) Total Impl NMC RTH MTN

No RTH responsible for these countries/ areas

Detached Islands (91 533)	1	0 0 15	0 0 100	100 NR NR 0	100 NR NR 7	100 NR NR 0	100 NR NR 7	100 NR NR 3
Detached Islands (91 : 753, 754)	2	0 0 15	0 0 100	100 NR NR 87	100 NR NR 87	100 NR NR 77	100 NR NR 90	100 NR NR 85
Nauru	1	0 0 15	0 0 100	100 NR NR 100	100 NR NR 100	100 NR NR 100	100 NR NR 100	100 NR NR 100

RTH Melbourne

Australia	127	15 15 15	100 100 100	10 74 74 74	10 73 73 74	10 76 76 76	10 75 75 75	10 75 75 75
Brunei Darussalam	1	15 15 15	100 100 100	100 100 100 100	100 100 87 100	100 100 93 100	100 100 100 100	100 100 95 100
East Timor	2	0 15 15	0 100 100	100 NR 0 0	100 NR 0 0	50 NR 0 0	0 NR 0 0	63 NR 0 0
Fiji	12	15 15 15	100 100 100	100 80 39 82	100 81 37 81	100 78 36 78	100 79 37 80	100 80 37 80
French Polynesia	9	0 15 15	0 100 100	100 NR 99 99	100 NR 94 94	100 NR 95 95	100 NR 96 96	100 NR 96 96
Indonesia	61	15 15 15	100 100 100	100 67 66 66	100 60 55 55	100 58 52 52	89 34 30 30	97 55 51 51
Islands (96: 995, 996)	2	0 15 15	0 100 100	50 NR 97 97	50 NR 100 100	50 NR 100 100	50 NR 100 100	50 NR 99 99
Kiribati	4	0 15 15	0 100 100	100 NR 58 58	100 NR 75 75	100 NR 40 40	100 NR 40 43	100 NR 53 54
Malaysia	14	5 15 15	100 100 100	100 100 92 92	100 100 98 99	100 100 99 99	100 100 97 97	100 100 96 97
New Caledonia	6	0 15 15	0 100 100	100 NR 100 100	100 NR 97 100	100 NR 93 96	100 NR 99 99	100 NR 97 99
Papua New Guinea	12	0 15 15	0 100 100	0 NR 0 0	0 NR 0 0	0 NR 0 0	0 NR 0 0	0 NR 0 0
Philippines	28	15 15 15	79 100 100	96 79 96 96	100 79 96 96	100 79 92 92	100 79 72 74	99 79 89 90
Samoa and American Samoa	5	0 15 15	0 100 100	40 NR 69 73	40 NR 67 71	40 NR 75 79	40 NR 72 77	40 NR 71 75
Singapore	1	15 15 15	100 100 100	100 100 100 100	100 100 93 100	100 100 100 100	100 100 100 100	100 100 98 100

NM = Reply received, but not including the appropriate monitoring results.

NR = No reply received from the centre concerned.

RESULTS OF THE ANNUAL GLOBAL MONITORING OF THE OPERATION OF THE WWW

Availability of SYNOP reports from Region V (Format 1)

Monitoring period: 1 to 15 October 2000

(a) Geographical location	(b) Number of stations in the RBSN	(c) Monitoring period (days) NMC RTH MTN	(d) Stations monitored (%) NMC RTH MTN	Percentage of reports expected from implemented stations (reference Volume A edition July 2000) and actually received at centres (within 6 hours of the observation time)				
				(e) 0000 UTC Impl NMC RTH MTN	(f) 0600 UTC Impl NMC RTH MTN	(g) 1200 UTC Impl NMC RTH MTN	(h) 1800 UTC Impl NMC RTH MTN	(i) Total Impl NMC RTH MTN

RTH Melbourne

Solomon Islands	4	0 15 15	0 100 100	100 NR 78 78	100 NR 68 68	100 NR 0 0	100 NR 0 0	100 NR 37 37
Tonga	4	0 15 15	0 100 100	100 NR 62 67	100 NR 47 53	100 NR 45 63	100 NR 68 68	100 NR 55 63
Tuvalu	4	0 15 15	0 100 100	100 NR 68 70	100 NR 62 63	100 NR 47 57	100 NR 53 53	100 NR 58 61
Vanuatu	6	0 15 15	0 100 100	100 NR 94 96	100 NR 96 96	100 NR 47 48	100 NR 71 76	100 NR 77 79
Total RTH Melbourne:	302	15 15	79 100 100	57 72 74	57 69 71	57 67 69	54 61 63	56 67 69

RTH Wellington

Cook Islands	9	0 0 15	0 0 100	78 NR NR 61	78 NR NR 62	78 NR NR 59	78 NR NR 56	78 NR NR 60
New Zealand	30	0 0 15	0 0 100	100 NR NR 23	100 NR NR 23	100 NR NR 23	100 NR NR 23	100 NR NR 23
Niue	1	0 0 15	0 0 100	100 NR NR 0	100 NR NR 0	100 NR NR 0	100 NR NR 0	100 NR NR 0
Southern Line Islands	1	0 0 15	0 0 100	0 NR NR 7	0 NR NR 0	0 NR NR 0	100 NR NR 0	25 NR NR 2
Tokelau and Swains Is.	4	0 0 15	0 0 100	100 NR NR 100	100 NR NR 97	100 NR NR 97	100 NR NR 100	100 NR NR 98
Total RTH Wellington:	45	15	0 0 100	93 37	93 37	93 36	96 36	94 36

Through WMC/RTH Washington

Islands in the Pacific Ocean north of the equator	44	0 15 15	0 45 100	98 NR 36 49	98 NR 37 49	95 NR 32 45	82 NR 29 44	93 NR 33 47
Phoenix Islands	1	0 15 15	0 100 100	100 NR 93 93	100 NR 100 100	100 NR 40 40	100 NR 53 60	100 NR 72 73
Total RTH Washington:	45	0 15 15	0 47 100	98 NR 37 50	98 NR 38 50	96 NR 33 45	82 NR 29 44	93 NR 34 47

NM = Reply received, but not including the appropriate monitoring results.
NR = No reply received from the centre concerned.

RESULTS OF THE ANNUAL GLOBAL MONITORING OF THE OPERATION OF THE WWW

Availability of SYNOP reports from Region V (Format 1)

Monitoring period: 1 to 15 October 2000

(a) Geographical location	(b) Number of stations in the RBSN	(c) Monitoring period (days) NMC RTH MTN	(d) Stations monitored (%) NMC RTH MTN	Percentage of reports expected from implemented stations (reference Volume A edition July 2000) and actually received at centres (within 6 hours of the observation time)				
				(e) 0000 UTC Impl NMC RTH MTN	(f) 0600 UTC Impl NMC RTH MTN	(g) 1200 UTC Impl NMC RTH MTN	(h) 1800 UTC Impl NMC RTH MTN	(i) Total Impl NMC RTH MTN

<i>Total</i>												
--------------	--	--	--	--	--	--	--	--	--	--	--	--

<i>Total</i>													
Total Region V:	396	15	60 82 100	66	67	66	65	66	63	62	58	65	63

NM = Reply received, but not including the appropriate monitoring results.
 NR = No reply received from the centre concerned.

RESULTS OF THE ANNUAL GLOBAL MONITORING OF THE OPERATION OF THE WWW

Availability of TEMP reports Part A from Region V (Format 1)

Monitoring period: 1 to 15 October 2000

(a) Geographical location	(b) Number of stations in the RBSN	(c) Monitoring period (days) NMC RTH MTN		(d) Stations monitored (%) NMC RTH MTN		Percentage of reports expected from implemented stations (reference Volume A edition July 2000) and actually received at centres (within 6 hours of the observation time)							
						(e) 0000 UTC Impl. NMC RTH MTN				(g) 1200 UTC Impl. NMC RTH MTN			

No RTH responsible for these countries/ areas

Nauru	1	0	0	15	0	0	100	0	NR	NR	0	0	NR	NR	0	0	NR	NR	0
-------	---	---	---	----	---	---	-----	---	----	----	---	---	----	----	---	---	----	----	---

RTH Melbourne

Australia	34	15	15	15	100	100	100	97	96	96	96	65	51	51	51	81	73	73	73
Brunei Darussalam	1	15	15	15	100	100	100	100	100	100	100	100	100	100	100	100	100	100	100
Fiji	1	15	15	15	100	100	100	100	100	100	100	0	0	0	0	50	50	50	50
French Polynesia	6	0	15	15	0	100	100	83	NR	83	83	17	NR	17	17	50	NR	50	50
Indonesia	12	15	15	15	100	100	100	100	36	31	31	8	0	0	0	54	18	16	16
Islands (96: 995, 996)	1	0	15	15	0	100	100	100	NR	100	100	100	NR	100	100	100	NR	100	100
Kiribati	1	0	15	15	0	100	100	100	NR	60	60	0	NR	0	0	50	NR	30	30
Malaysia	8	5	15	15	100	100	100	100	63	62	62	100	63	58	60	100	63	60	61
New Caledonia	1	0	15	15	0	100	100	100	NR	100	100	100	NR	100	100	100	NR	100	100
Papua New Guinea	3	0	15	15	0	100	100	67	NR	38	38	33	NR	0	0	50	NR	19	19
Philippines	3	15	15	15	100	100	100	67	0	0	0	0	0	0	0	33	0	0	0
Samoa and American Samoa	1	0	15	15	0	100	100	100	NR	87	87	100	NR	100	100	100	NR	93	93
Singapore	1	15	15	15	0	100	100	100	NM	100	100	100	NM	0	100	100	NM	50	100
Solomon Islands	1	0	15	15	0	100	100	100	NR	0	0	0	NR	0	0	50	NR	0	0
Tuvalu	1	0	15	15	0	100	100	100	NR	47	53	0	NR	0	0	50	NR	23	27
Vanuatu	1	0	15	15	0	100	100	100	NR	0	0	0	NR	0	0	50	NR	0	0
Total RTH Melbourne:	76	15	15	15	78	100	100	95	71	72	72	50	35	37	72	53	54	54	54

NM = Reply received, but not including the appropriate monitoring results.
 NR = No reply received from the centre concerned.

RESULTS OF THE ANNUAL GLOBAL MONITORING OF THE OPERATION OF THE WWW

Availability of TEMP reports Part A from Region V (Format 1)

Monitoring period: 1 to 15 October 2000

(a) Geographical location	(b) Number of stations in the RBSN	(c) Monitoring period (days) NMC RTH MTN		(d) Stations monitored (%) NMC RTH MTN		Percentage of reports expected from implemented stations (reference Volume A edition July 2000) and actually received at centres (within 6 hours of the observation time)													
						(e) 0000 UTC Impl. NMC RTH MTN				(g) 1200 UTC Impl. NMC RTH MTN				(i) Total Impl. NMC RTH MTN					
<i>RTH Melbourne</i>																			
<i>RTH Wellington</i>																			
New Zealand	5	0	0	15	0	0	100	100	NR	NR	99	60	NR	NR	60	80	NR	NR	79
Southern Line Islands	1	0	0	15	0	0	100	0	NR	NR	0	0	NR	NR	0	0	NR	NR	0
Total RTH Wellington:	6	0	0	15	0	0	100	83	NR	NR	82	50	NR	NR	50	67	NR	NR	66
<i>Through WMC/RTH Washington</i>																			
Islands in the Pacific ocean north of the equator	9	0	15	15	0	100	100	100	NR	93	94	33	NR	90	96	67	NR	91	95
Phoenix islands	1	0	15	15	0	0	100	100	NR	NM	0	0	NR	NM	0	50	NR	NM	0
Total RTH Washington:	10	0	15	15	0	90	100	100	NR	84	85	30	NR	81	87	65	NR	82	86
<i>Total</i>																			
Total Region V:	93		15		63	91	100	94		73		47		43		70		58	

NM = Reply received, but not including the appropriate monitoring results.
 NR = No reply received from the centre concerned.

Availability of SYNOP reports from Region V on The Main Telecommunication NetworkMonitoring period: 1 to 15 October 2000 (Annual Global Monitoring) and
1 to 15 February 2001, 1 to 15 April 2001, 1 to 15 July 2001 (Special MTN Monitoring)

Geographical Location	Monitoring based on July 2000 RBSN					Monitoring based on July 2001 RBSN			Average over the four monitoring periods
	RBSN July 2000 Number of stations	Volume A July 2000 Number of observation implemented (%)	Percentage of reports received with reference to RBSN			RBSN July 2001 Number of stations	Volume A July 2001 Number of observation implemented (%)	% of reports received with ref. to RBSN SMM July 2001	
			AGM October 2000	SMM					
				February 2001	April 2001				

No RTH responsible for these countries/ area

Detached Islands (91	1	4 (100	3 %	0 %	0 %	1	4 (100	0 %	1 %
Detached Islands (91 : 753, 754)	2	8 (100	85 %	97 %	95 %	2	8 (100	84 %	90 %
Nauru	1	4 (100	100 %	0 %	0 %	1	4 (100	93 %	48 %
Total:	4	16 (100	68 %	48 %	48 %	4	16 (100	65 %	57 %

RTH Melbourne

Australia	127	497(98 %)	75 %	77 %	78 %	127	496 (98 %)	75 %	76 %
Brunei Darussalam	1	4 (100	100 %	95 %	97 %	1	4 (100	98 %	98 %
East Timor	2	5(63 %)	0 %	0 %	0 %	2	5 (63 %)	0 %	0 %
Fiji	12	48 (100	80 %	86 %	90 %	12	48 (100	87 %	86 %
French Polynesia	9	36 (100	96 %	92 %	88 %	9	36 (100	100	94 %
Indonesia	61	237(97 %)	51 %	61 %	64 %	61	237 (97 %)	61 %	59 %
Islands (96: 995, 996)	2	8 (100	99 %	98 %	100	2	8 (100	97 %	99 %
Kiribati	4	16 (100	54 %	62 %	63 %	4	16 (100	69 %	62 %
Malaysia	14	56 (100	97 %	99 %	93 %	14	56 (100	99 %	97 %
New	6	24 (100	99 %	89 %	91 %	6	24 (100	88 %	92 %
Papua New Guinea	12	33(69 %)	0 %	0 %	0 %	12	33 (69 %)	0 %	0 %
Philippines	28	112 (100	90 %	89 %	78 %	28	112 (100	85 %	86 %
Samoa and American Samoa	5	8(40 %)	75 %	29 %	32 %	5	8 (40 %)	31 %	42 %
Singapore	1	4 (100	100 %	98 %	100	1	4 (100	100	100 %
Solomon	4	16 (100	37 %	29 %	7 %	4	16 (100	9 %	21 %
Tonga	4	16 (100	63 %	60 %	73 %	4	16 (100	66 %	66 %
Tuvalu	4	16 (100	61 %	55 %	68 %	4	16 (100	67 %	63 %
Vanuatu	6	24 (100	79 %	67 %	52 %	6	24 (100	67 %	66 %
Total:	302	1160(96 %)	69 %	71 %	71 %	302	115 (96 %)	71 %	71 %

Availability of SYNOP reports from Region V on The Main Telecommunication Network

Monitoring period: 1 to 15 October 2000 (Annual Global Monitoring) and
1 to 15 February 2001, 1 to 15 April 2001, 1 to 15 July 2001 (Special MTN Monitoring)

Geographical Location	Monitoring based on July 2000 RBSN					Monitoring based on July 2001 RBSN			Average over the four monitoring periods
	RBSN July 2000 Number of stations	Volume A July 2000 Number of observation implemented (%)	Percentage of reports received with reference to RBSN			RBSN July 2001 Number of stations	Volume A July 2001 Number of observation implemented (%)	% of reports received with ref. to RBSN SMM July 2001	
			AGM October 2000	SMM					
				February 2001	April 2001				
RTH Melbourne									
RTH Wellington									
Cook Islands	9	28 (78 %)	60 %	51 %	58 %	9	28 (78 %)	65 %	59 %
New Zealand	30	120 (100 %)	23 %	0 %	98 %	30	120 (100 %)	97 %	55 %
Niue	1	4 (100 %)	0 %	0 %	0 %	1	4 (100 %)	0 %	0 %
Southern Line Islands	1	1 (25 %)	2 %	0 %	0 %	1	1 (25 %)	0 %	1 %
Tokelau and Swains Is.	4	16 (100 %)	98 %	25 %	24 %	4	16 (100 %)	1 %	37 %
Total:	45	169 (94 %)	36 %	12 %	79 %	45	169 (94 %)	78 %	51 %
Through WMC/RTH Washington									
Islands in the Pacific Ocean north of the equator	44	164 (93 %)	47 %	30 %	31 %	44	164 (93 %)	30 %	35 %
Phoenix	1	4 (100 %)	73 %	82 %	85 %	1	4 (100 %)	83 %	81 %
Total:	45	168 (93 %)	47 %	31 %	32 %	45	168 (93 %)	31 %	35 %
TOTAL REGION V									
Total region	396	1513 (96 %)	63 %	60 %	67 %	396	151 (95 %)	67 %	64 %

Availability of TEMP reports Part A from Region V on The Main Telecommunication NetworkMonitoring period: 1 to 15 October 2000 (Annual Global Monitoring) and
1 to 15 February 2001, 1 to 15 April 2001, 1 to 15 July 2001 (Special MTN Monitoring)

Geographical Location	Monitoring based on July 2000 RBSN					Monitoring based on July 2001 RBSN			Average over the four monitoring periods
	RBSN July 2000 Number of stations	Volume A July 2000 Number of observation implemented (%)	Percentage of reports received with reference to RBSN			RBSN July 2001 Number of stations	Volume A July 2001 Number of observation implemented (%)	% of reports received with ref. to RBSN SMM July 2001	
			AGM October 2000	SMM					
			February 2001	April 2001					
No RTH responsible for these countries/ area									
Nauru	1	0 (0 %)	0 %	0 %	0 %	1	0 (0 %)	0 %	0 %
Total:	1	0 (0 %)	0 %	0 %	0 %	1	0 (0 %)	0 %	0 %
RTH Melbourne									
Australia	34	55 (81 %)	73 %	74 %	74 %	34	55 (81 %)	73 %	74 %
Brunei Darussalam	1	2 (100)	100 %	100 %	100	1	2 (100 %)	100 %	100 %
Fiii	1	1 (50 %)	50 %	50 %	50 %	1	1 (50 %)	50 %	50 %
French Polynesia	6	6 (50 %)	50 %	58 %	66 %	6	6 (50 %)	58 %	58 %
Indonesia	12	13 (54 %)	16 %	13 %	10 %	12	13 (54 %)	6 %	11 %
Islands (96: 995, 996)	1	2 (100)	100 %	100 %	97 %	1	2 (100 %)	100 %	99 %
Kiribati	1	1 (50 %)	30 %	37 %	17 %	1	1 (50 %)	37 %	30 %
Malavsia	8	16 (100)	61 %	73 %	72 %	8	16 (100 %)	75 %	70 %
New caledonia	1	2 (100)	100 %	100 %	100	1	2 (100 %)	100 %	100 %
Papua New Guinea	3	3 (50 %)	19 %	14 %	3 %	3	3 (50 %)	0 %	9 %
Philippines	3	2 (33 %)	0 %	0 %	7 %	3	2 (33 %)	9 %	4 %
Samoa and American Samoa	1	2 (100)	93 %	100 %	100	1	2 (100 %)	100 %	98 %
Singapore	1	2 (100)	100 %	100 %	100	1	2 (100 %)	100 %	100 %
Solomon	1	1 (50 %)	0 %	0 %	0 %	1	1 (50 %)	0 %	0 %
Tuvalu	1	1 (50 %)	27 %	50 %	0 %	1	1 (50 %)	13 %	23 %
Vanuatu	1	1 (50 %)	0 %	0 %	0 %	1	1 (50 %)	0 %	0 %
Total:	76	110 (72 %)	54 %	56 %	55 %	76	110 (72 %)	54 %	55 %
RTH Wellington									
New zealand	5	8 (80 %)	79 %	78 %	79 %	5	8 (80 %)	79 %	79 %
Southern Line Islands	1	0 (0 %)	0 %	0 %	0 %	1	0 (0 %)	0 %	0 %
Total:	6	8 (67 %)	66 %	65 %	66 %	6	8 (67 %)	66 %	66 %

Availability of TEMP reports Part A from Region V on The Main Telecommunication Network

Monitoring period: 1 to 15 October 2000 (Annual Global Monitoring) and
1 to 15 February 2001, 1 to 15 April 2001, 1 to 15 July 2001 (Special MTN Monitoring)

Geographical Location	Monitoring based on July 2000 RBSN					Monitoring based on July 2001 RBSN			Average over the four monitoring periods
	RBSN July 2000 Number of stations	Volume A July 2000 Number of observation implemented (%)	Percentage of reports received with reference to RBSN			RBSN July 2001 Number of stations	Volume A July 2001 Number of observation implemented (%)	% of reports received with ref. to RBSN SMM July 2001	
			AGM October 2000	SMM					
			February 2001	April 2001					
RTH Wellington									
Through WMC/RTH Washington									
Islands in the Pacific ocean north of the equator	9	12 (67 %)	95 %	87 %	87 %	9	12 (67 %)	84 %	88 %
Phoenix	1	1 (50 %)	0 %	0 %	0 %	1	1 (50 %)	0 %	0 %
Total:	10	13 (65 %)	86 %	79 %	78 %	10	13 (65 %)	76 %	80 %
TOTAL REGION V									
Total region	93	131 (70 %)	58 %	59 %	58 %	93	131 (70 %)	57 %	58 %

List of silent stations in Region V at The Main Telecommunication Network
Monitoring period: 1 to 15 October 2000 (Annual Global Monitoring) and
1 to 15 February 2001, 1 to 15 April 2001, 1 to 15 July 2001 (Special MTN Monitoring)

SYNOP reports		
(a) Location	(b) Stations implemented <i>references:</i> RBSN July 2001 and Volume A July 2001	(c) Stations not implemented <i>references:</i> RBSN July 2001 and Volume A July 2001
Australia	94184 94200 94211 94236 94255 94275 94313 94324 94327 94333 94366 94388 94451 94477 94488 94500 94642 94643 94700 94866 95146 95322	
Cook Islands	91811	91826
East Timor	97385 97390	
Indonesia	96147	
Islands in the Pacific Ocean north of the equator	91066 91159 91166 91168 91194 91251 91259 91275 91287 91315 91338 91352 91355 91365 91377	91328
Niue	91822	
Papua New Guinea	92001 92003 92004 92014 92035 92044 92047 92071 92076 92077 92087 92100	
Samoa and American Samoa		91764
Tonga	91780	
Total:	55 stations.	3 stations.

List of silent stations in Region V at The Main Telecommunication Network
 Monitoring period: 1 to 15 October 2000 (Annual Global Monitoring) and
 1 to 15 February 2001, 1 to 15 April 2001, 1 to 15 July 2001 (Special MTN Monitoring)

TEMP reports Part A		
(a) Location	(b) Stations implemented <i>references:</i> RBSN July 2001 and Volume A July 2001	(c) Stations not implemented <i>references:</i> RBSN July 2001 and Volume A July 2001
Australia	94750	
French Polynesia		91944
Indonesia	97724	
Malaysia	48648	
Nauru		91530
Papua New Guinea		92014
Philippines	98223	98429
Phoenix islands	91701	
Solomon Islands	91517	
Southern Line Islands		91902
Vanuatu	91557	
Total:	7 stations.	5 stations.

List of stations in RA V for which reports were received although not mentioned as prepared in Volume A
 Monitoring period: 1 to 15 October 2000 (Annual Global Monitoring) and
 1 to 15 February 2001, 1 to 15 April 2001, 1 to 15 July 2001 (Special MTN Monitoring)

(a) Location	(b) Index number
SYNOP reports	
Samoa and American Samoa	91766 91768
Cook Islands	91812
Total:	3 stations.
TEMP reports Part A	
Australia	94767
Total:	1 stations.