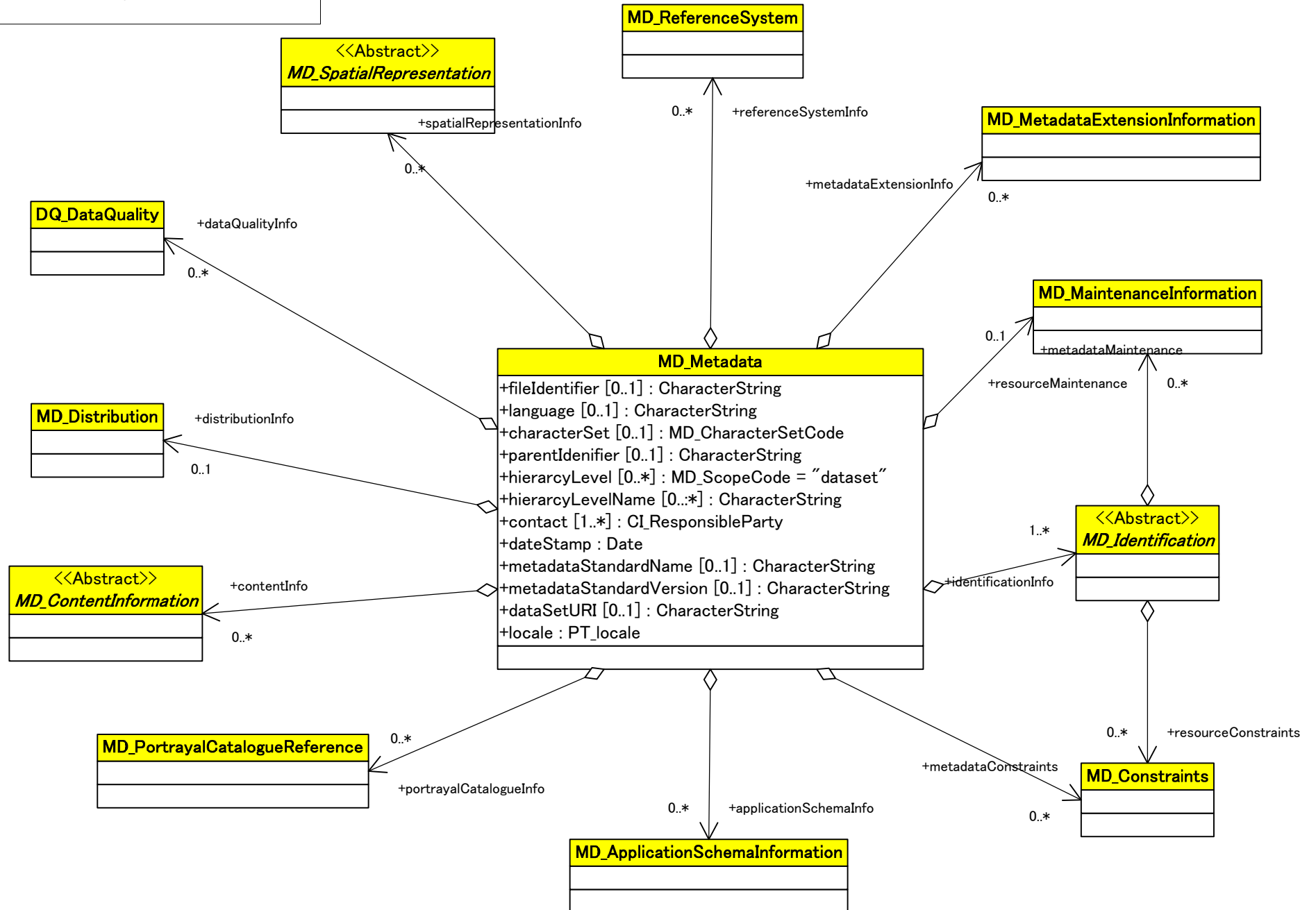
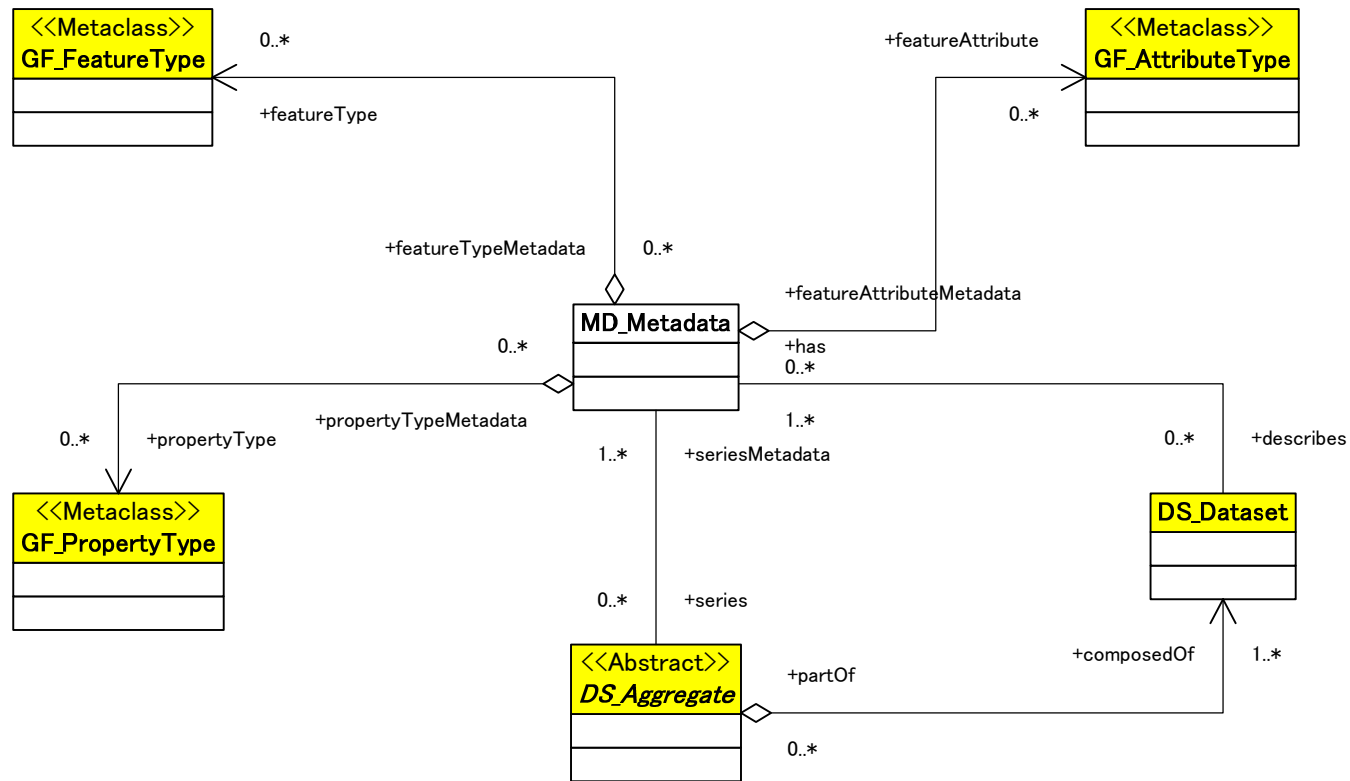


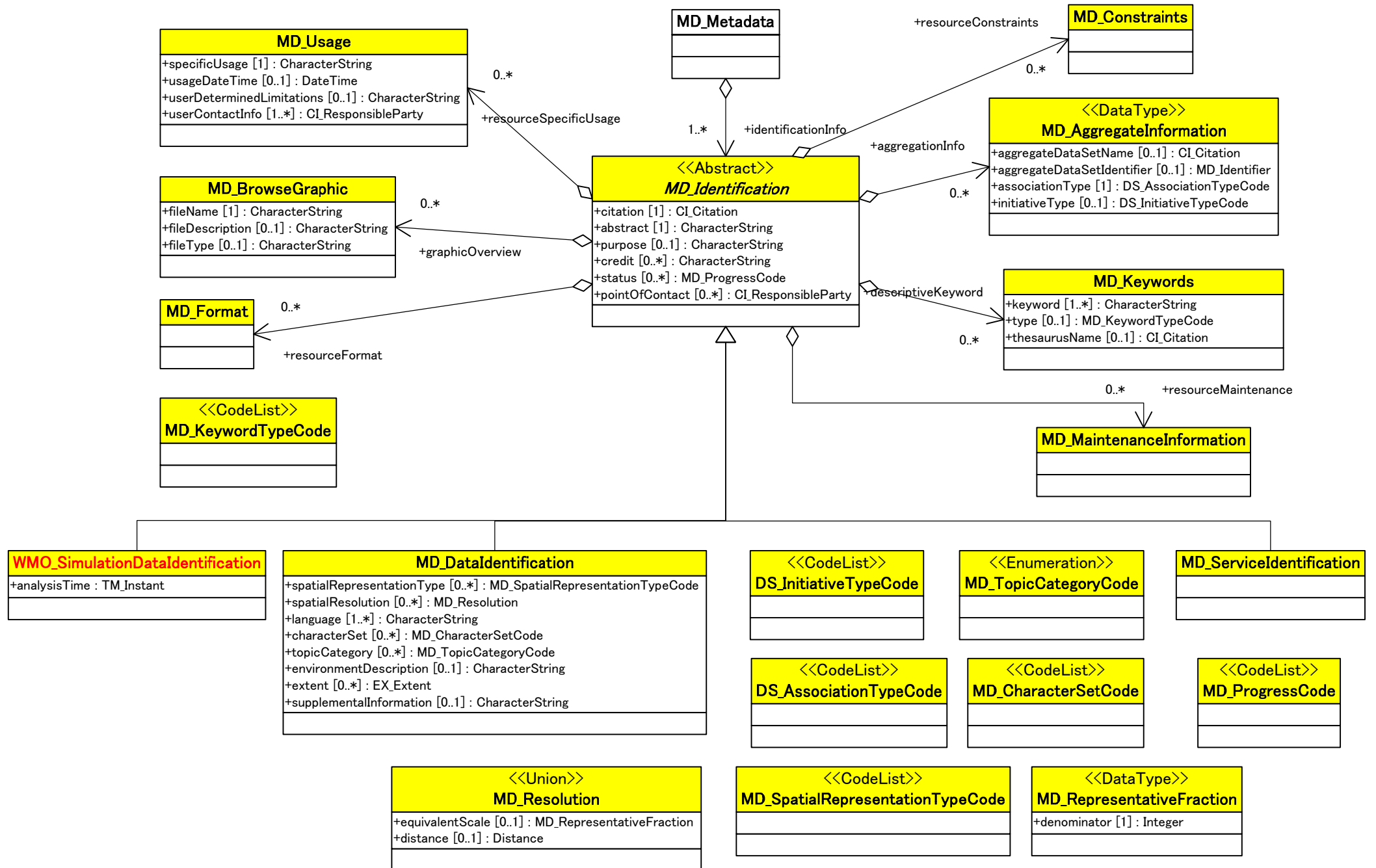
Metadata entity set information



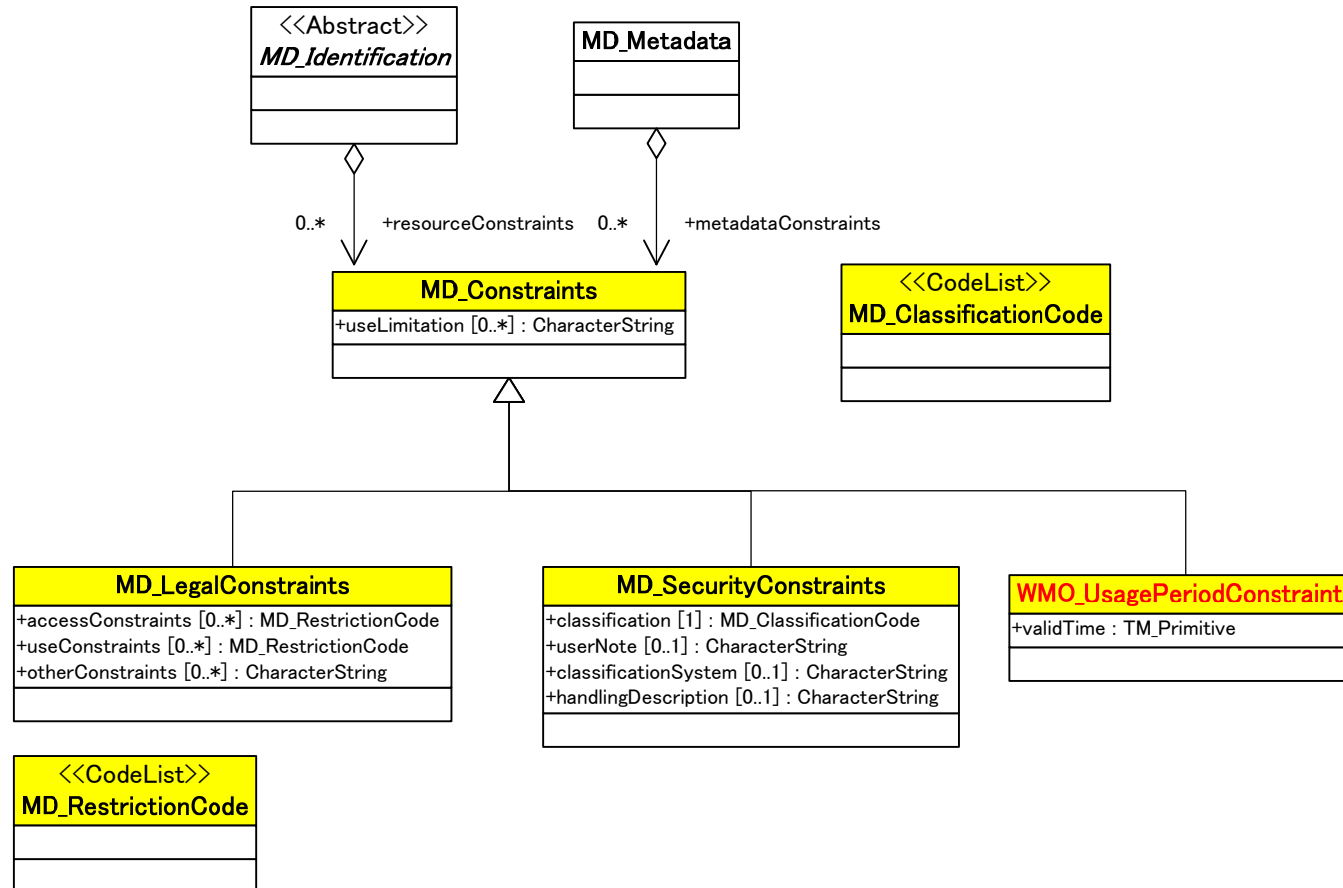
Metadata application



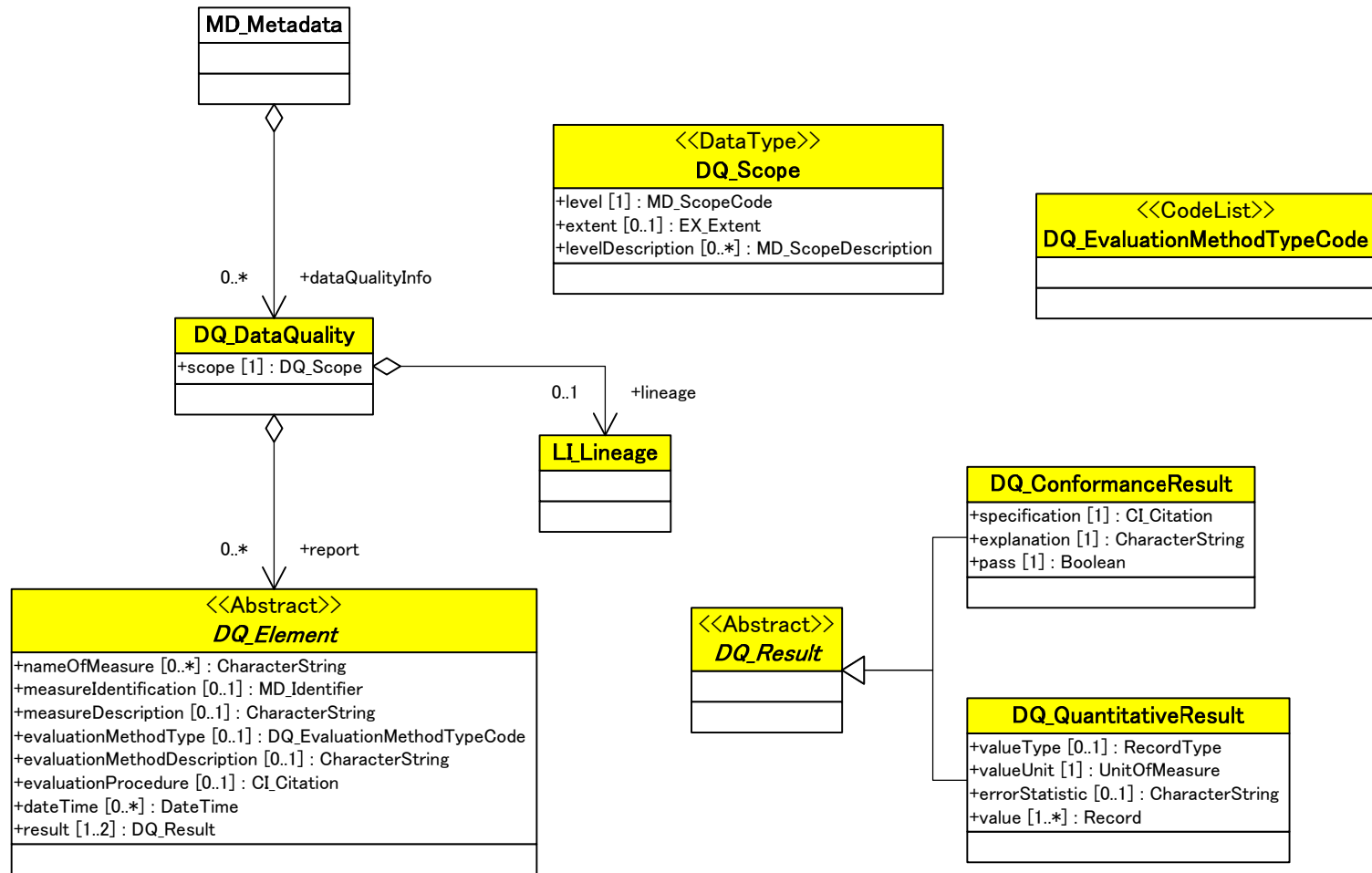
Identification information



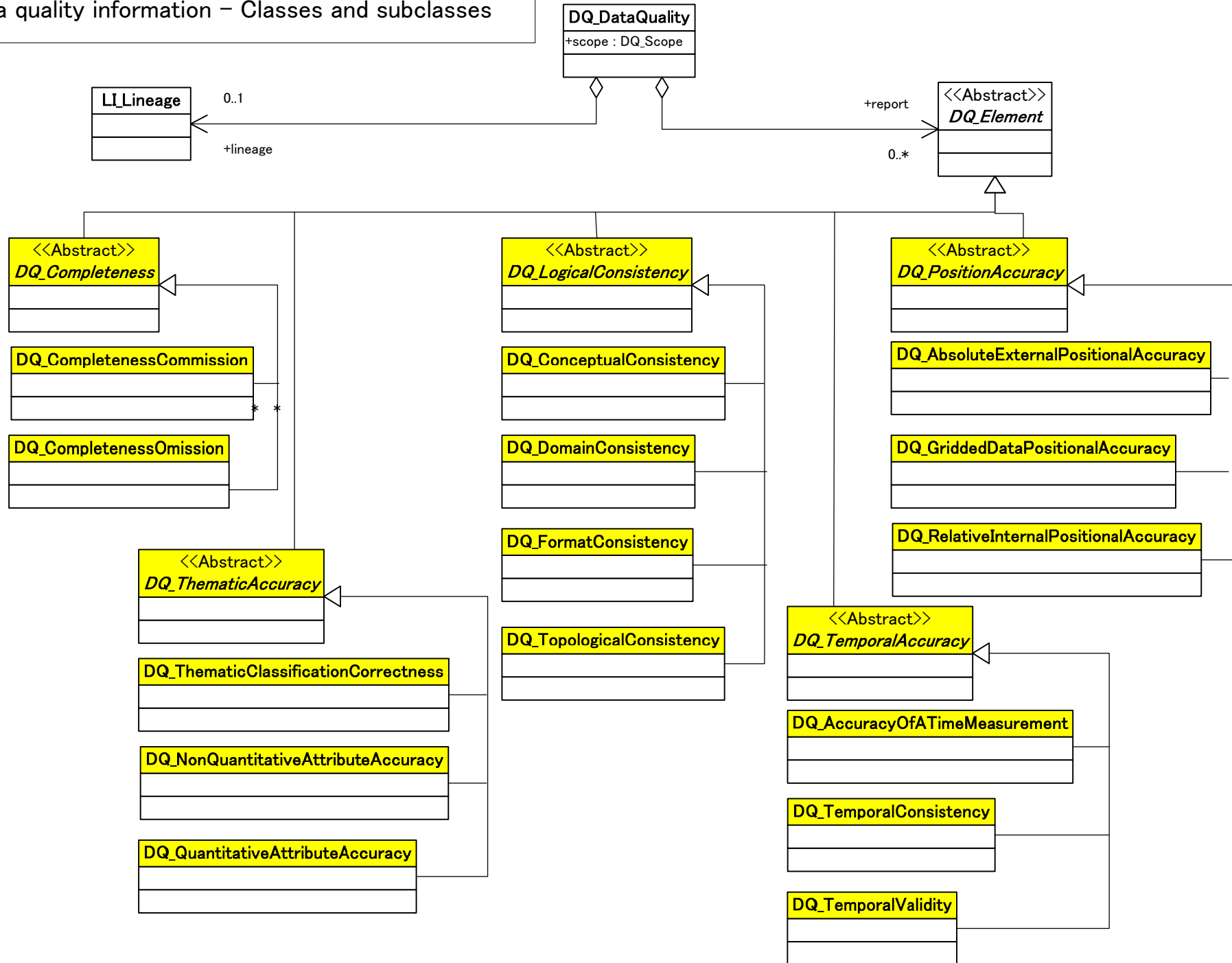
Constraint information



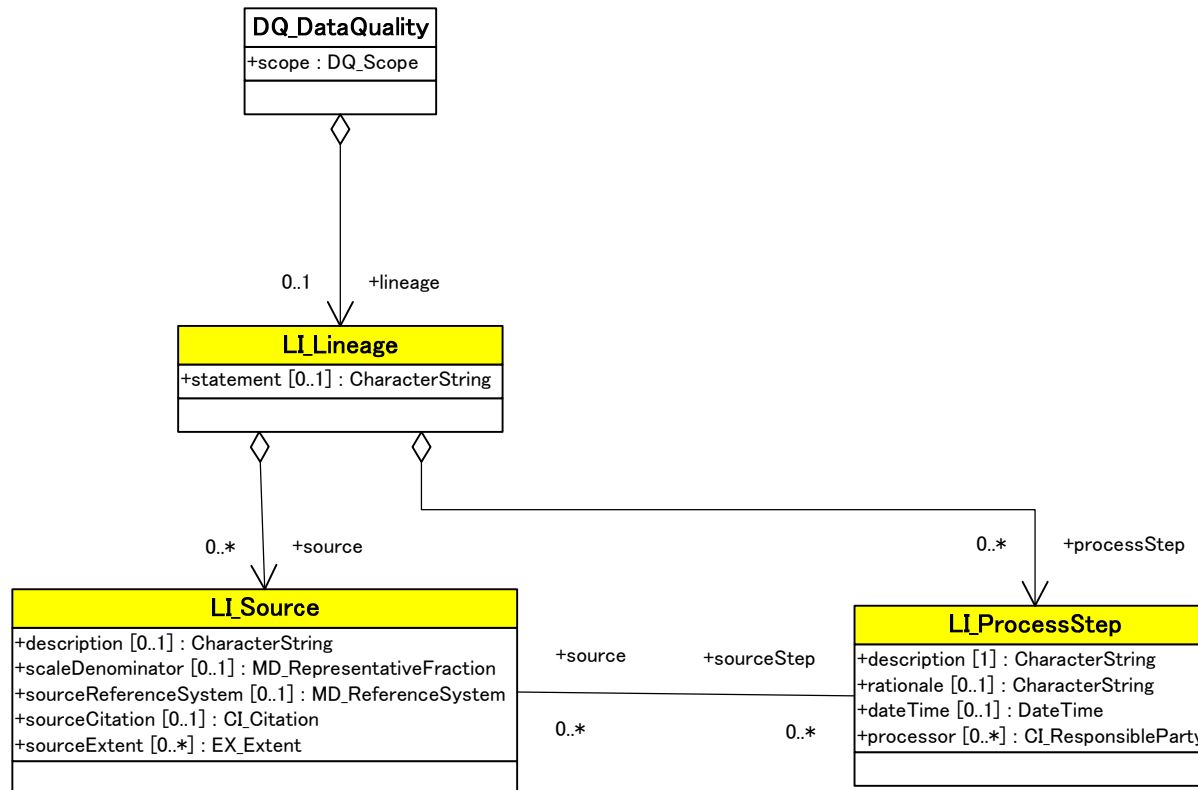
Data quality information – General –



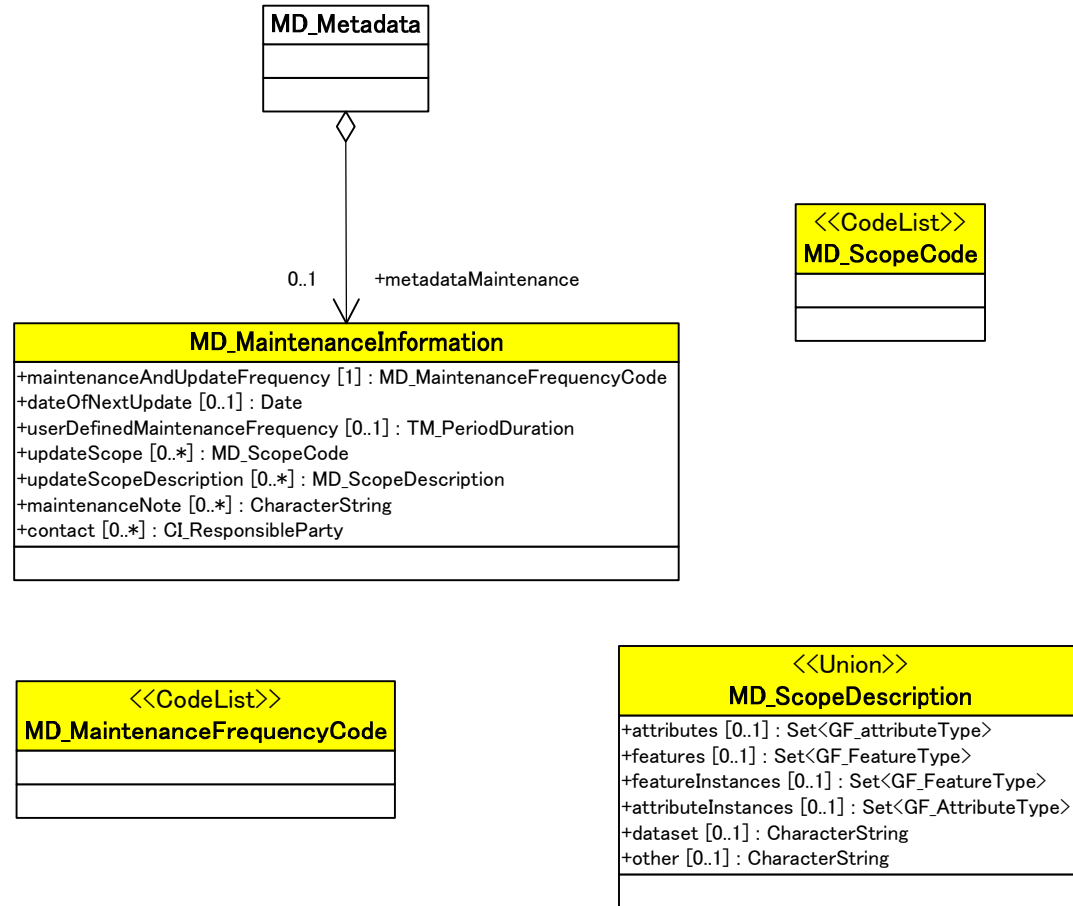
Data quality information – Classes and subclasses



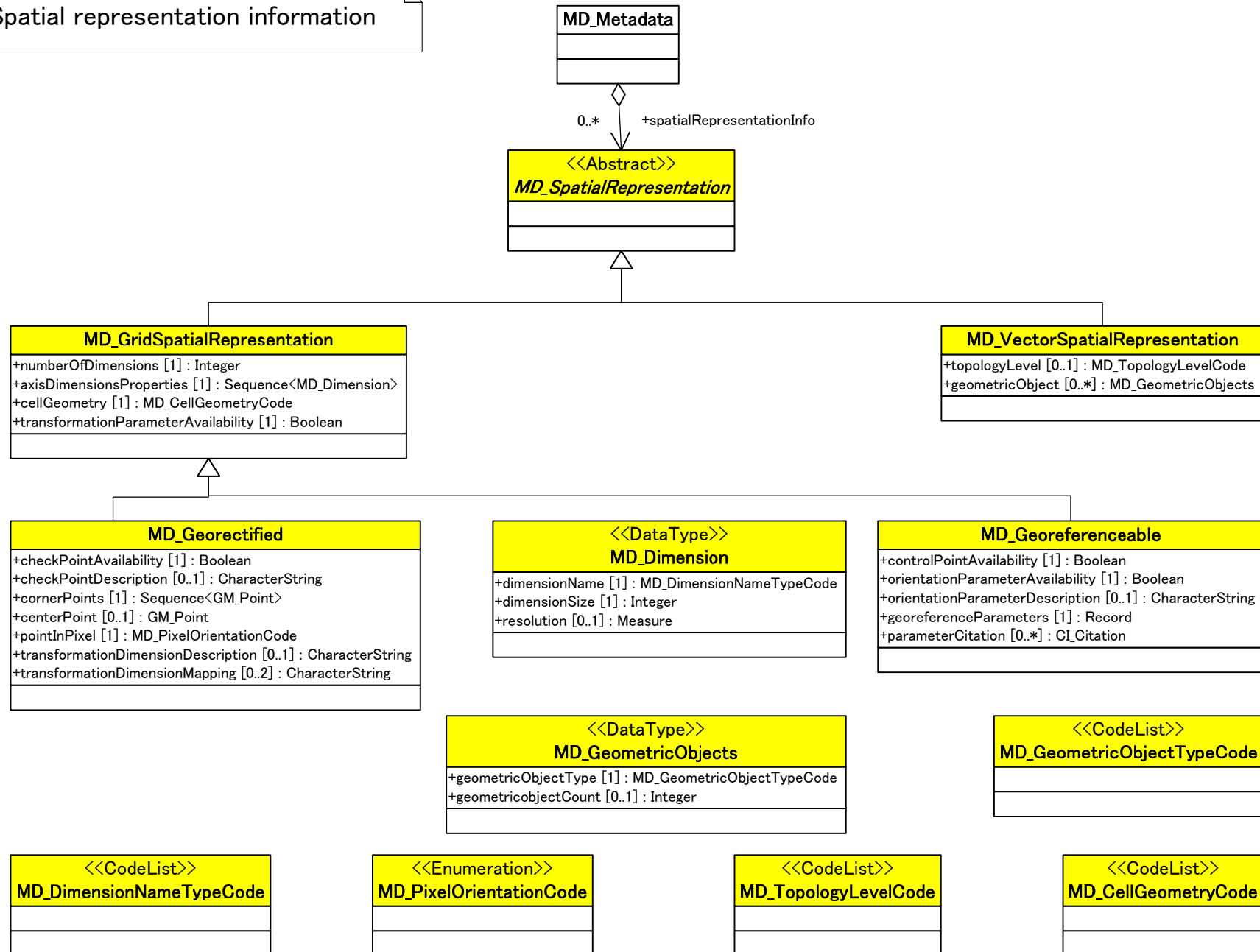
Data quality information – Lineage –



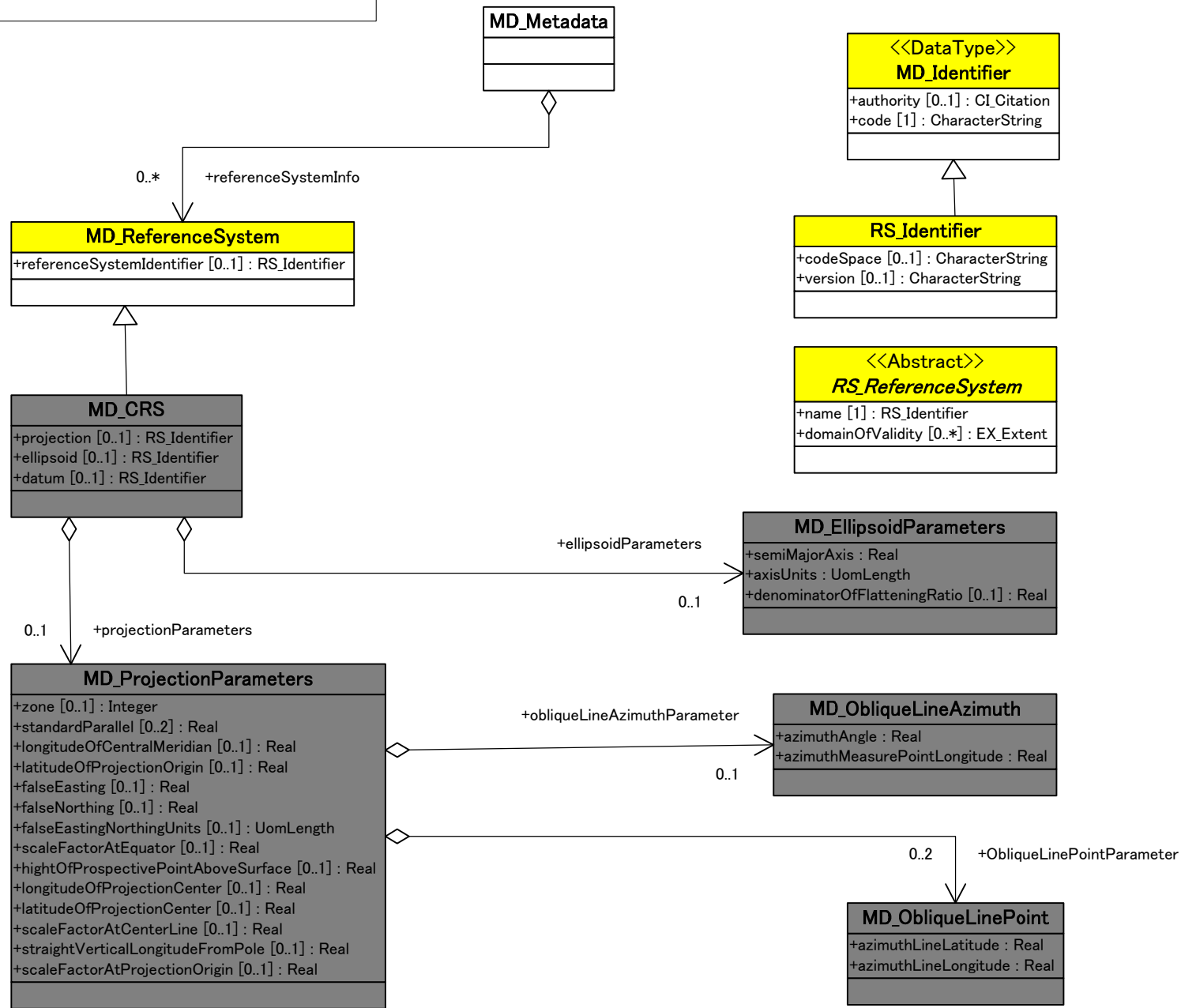
Maintenance information



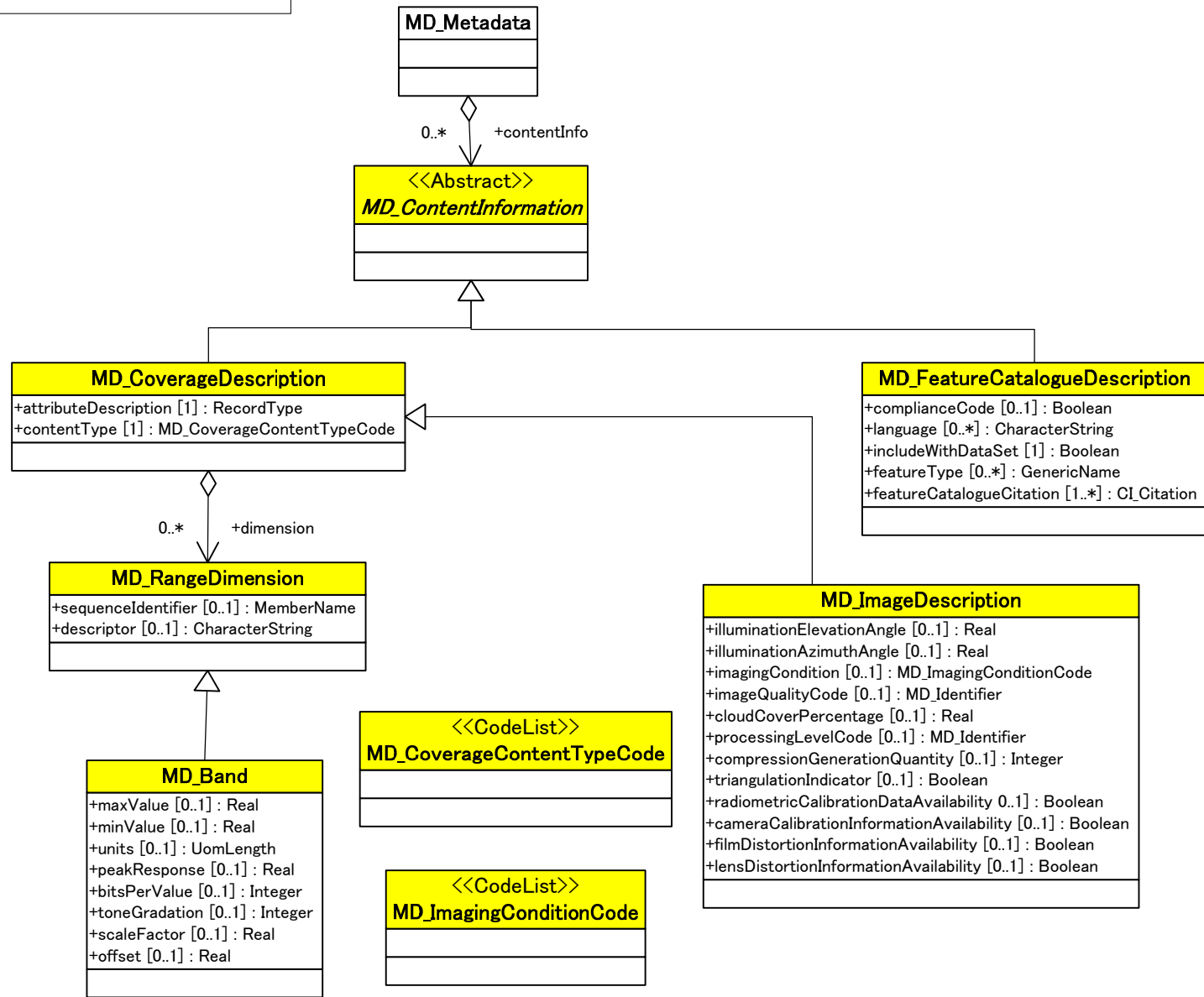
Spatial representation information



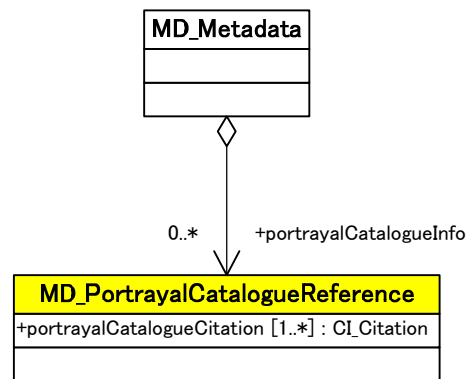
Reference system information



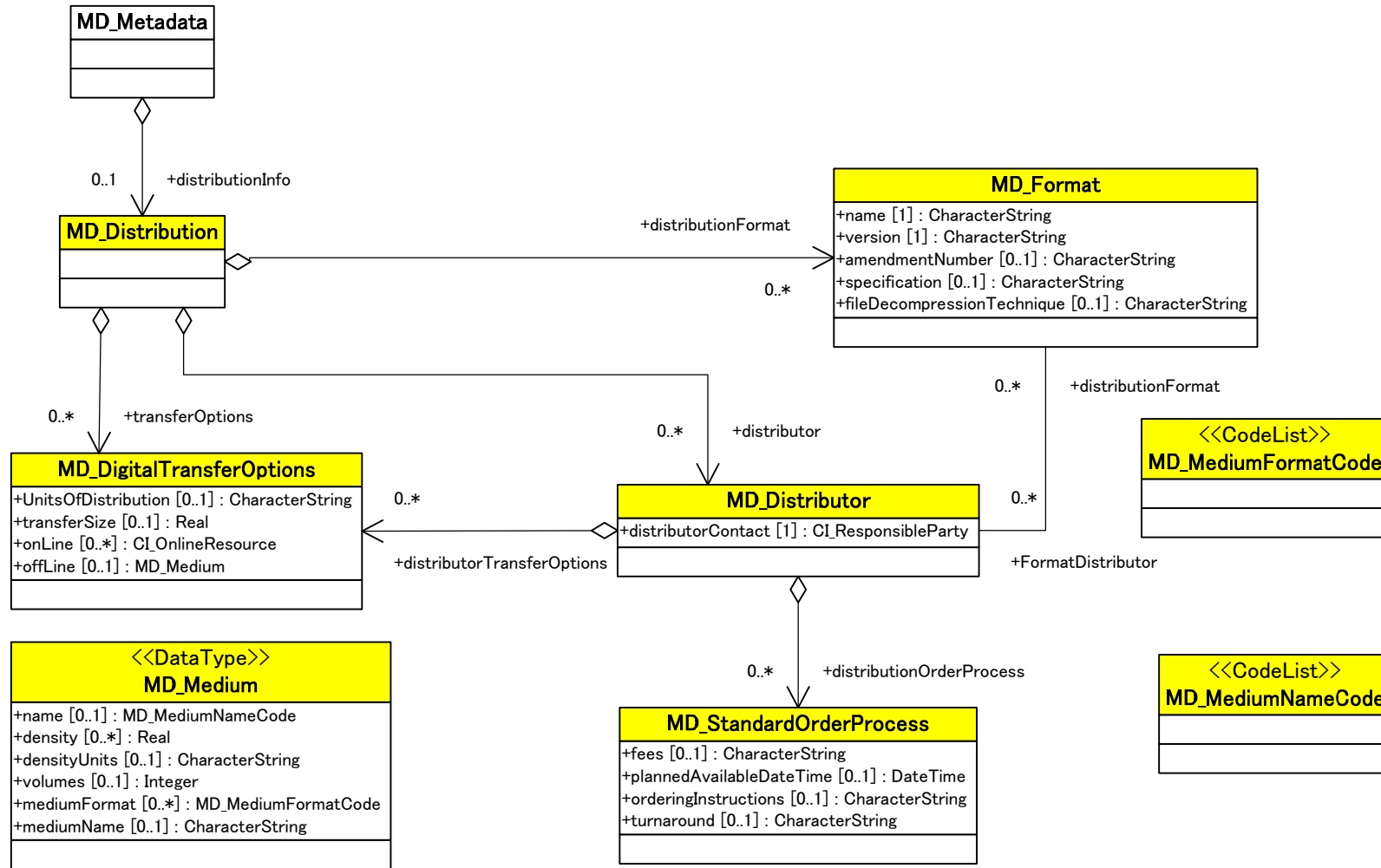
Content information



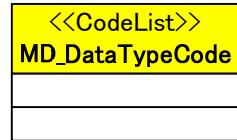
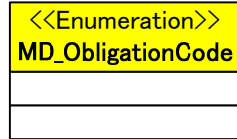
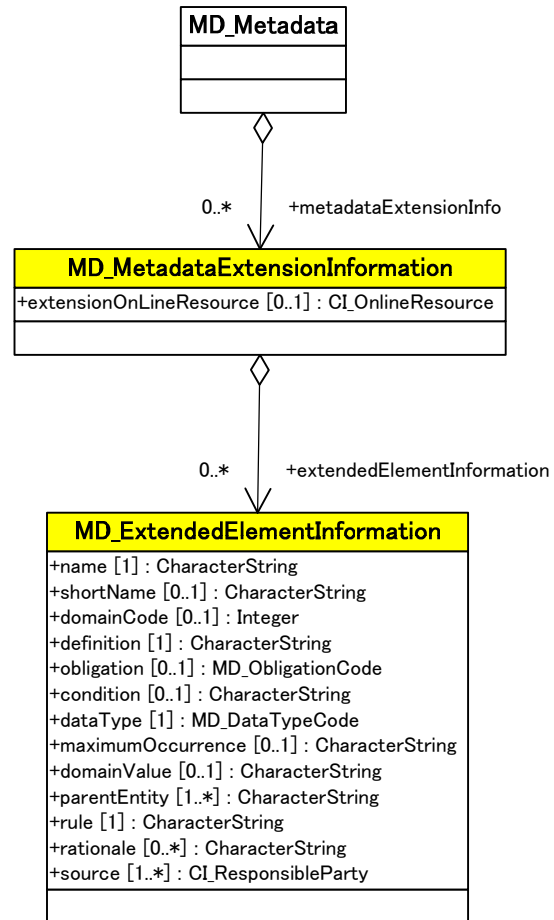
Portrayal catalogue information



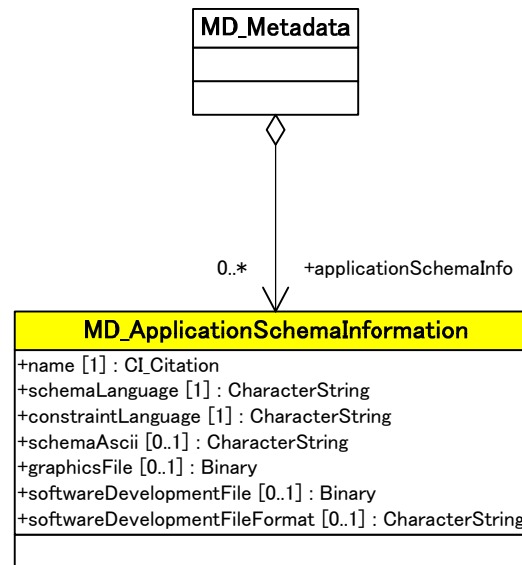
Distribution information



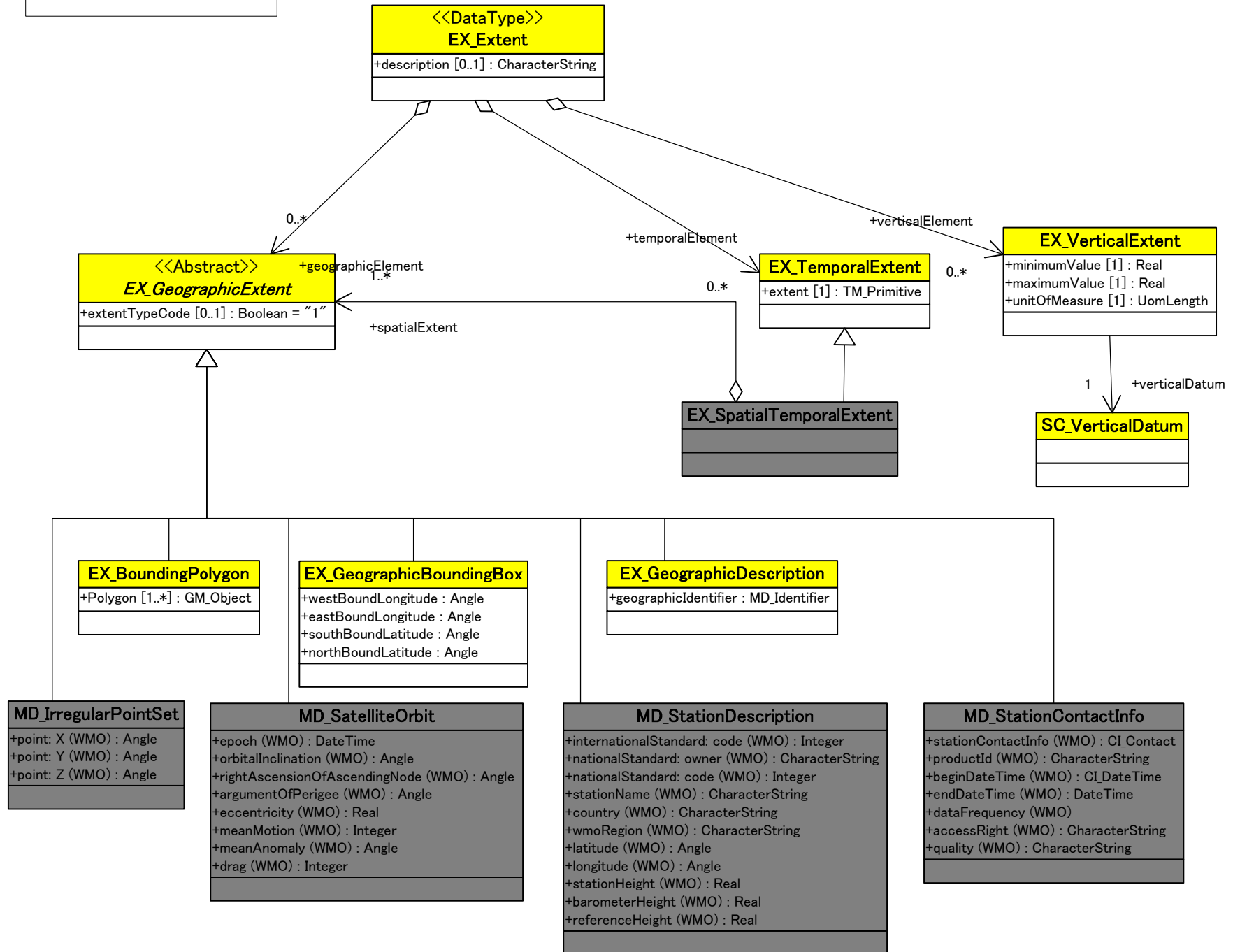
Metadata extension information



Application schema information



Extent information



Citation and responsible party information

<<DataType>> CI_Citation
+title [1] : CharacterString +alternateTitle [0..*] : CharacterString +date [1..*] : CI_Date +edition [0..1] : CharacterString +editionDate [0..1] : Date +identifier [0..*] : MD_Identifier +citedResponsibilityParty [0..*] : CI_ResponsibilityParty +presentationForm [0..*] : CI_PresentationFormCode +series [0..1] : CI_Series +otherCitationDetails [0..1] : CharacterString +collectiveTime [0..1] : CharacterString +ISBN [0..1] : CharacterString +ISSN [0..1] : CharacterString

<<DataType>> CI_ResponsibilityParty
+individualName [0..1] : CharacterString +organizationName [0..1] : CharacterString +positionName [0..1] : CharacterString +contactInfo [0..1] : CI_Contact +role [1] : CI_RoleCode

PT_locale
+languageCode : ISO639 +country : ISO3166 +characterEncoding : MD_CharacterSetCode

<<DataType>> CI_Series
+name [0..1] : CharacterString +issueIdentification [0..1] : CharacterString +page [0..1] : CharacterString

<<DataType>> CI_Contact
+phone [0..1] : CI_Telephone +address [0..1] : CI_Address +onlineResource [0..1] : CI_OnlineResource +hoursOfService [0..1] : CharacterString +contactInstruction [0..1] : CharacterString

<<DataType>> CI_Telephone
+voice [0..*] : CharacterString +facsimile [0..*] : CharacterString

<<DataType>> CI_Date
+date [1] : Date +dateType [1] : CI_DateTypeCode

URL

<<DataType>> CI_OnlineResource
+linkage [1] : URL +protocol [0..1] : CharacterString +applicationProfile [0..1] : CharacterString +name [0..1] : CharacterString +description [0..1] : CharacterString +function [0..1] : CI_OnLineFunctionCode

<<CodeList>> CI_RoleCode

<<CodeList>> CI_DateTypeCode

<<CodeList>> CI_PresentationFormCode

<<DataType>> CI_Address
+deliveryPoint [0..*] : CharacterString +city [0..1] : CharacterString +administrativeArea [0..1] : CharacterString +postalCode [0..1] : CharacterString +country [0..1] : CharacterString +electronicMailAddress [0..*] : CharacterString

<<CodeList>> CI_OnLineFunctionCode

WMO delimited string

