

Figure 1

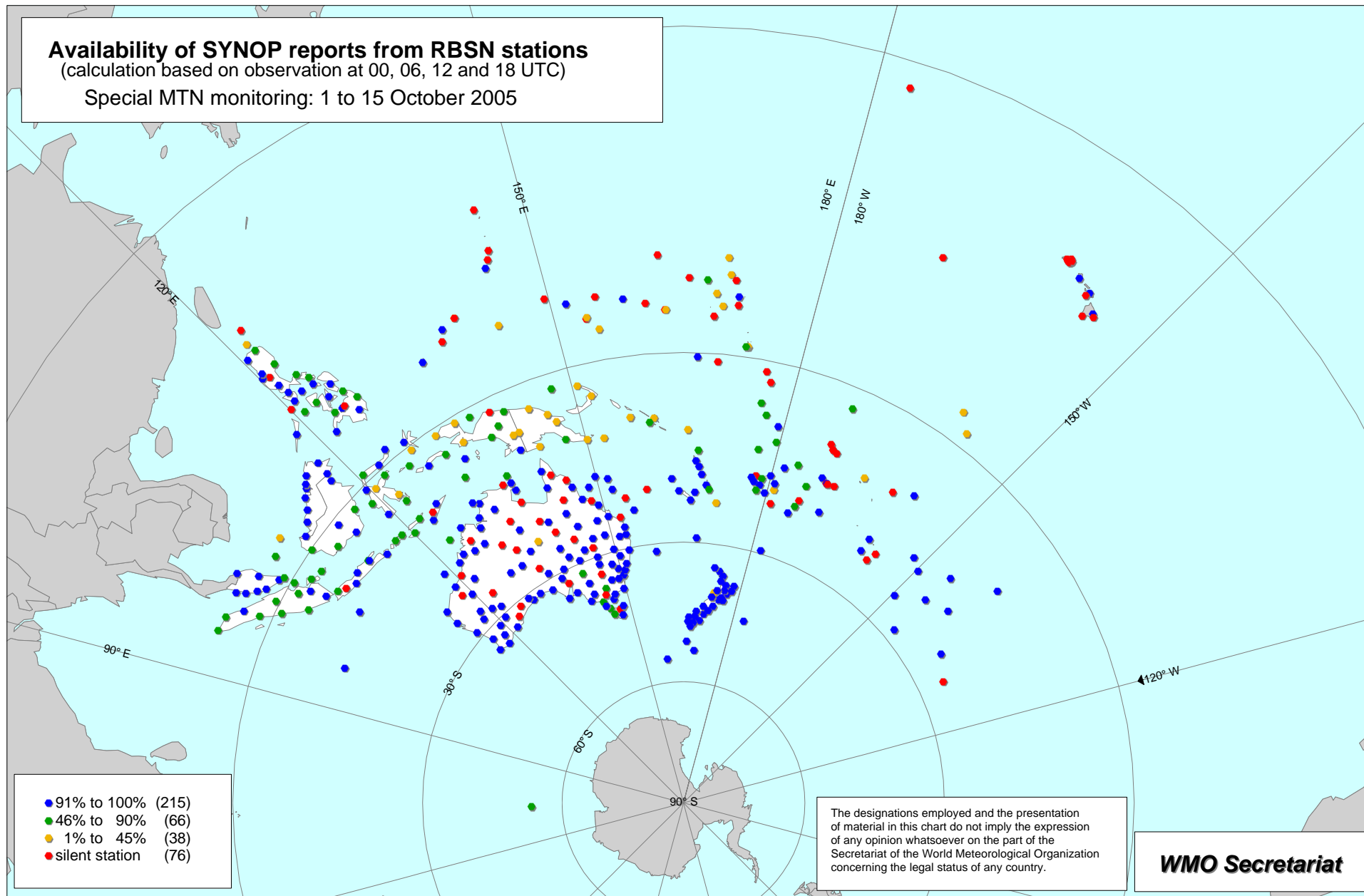


Figure 2

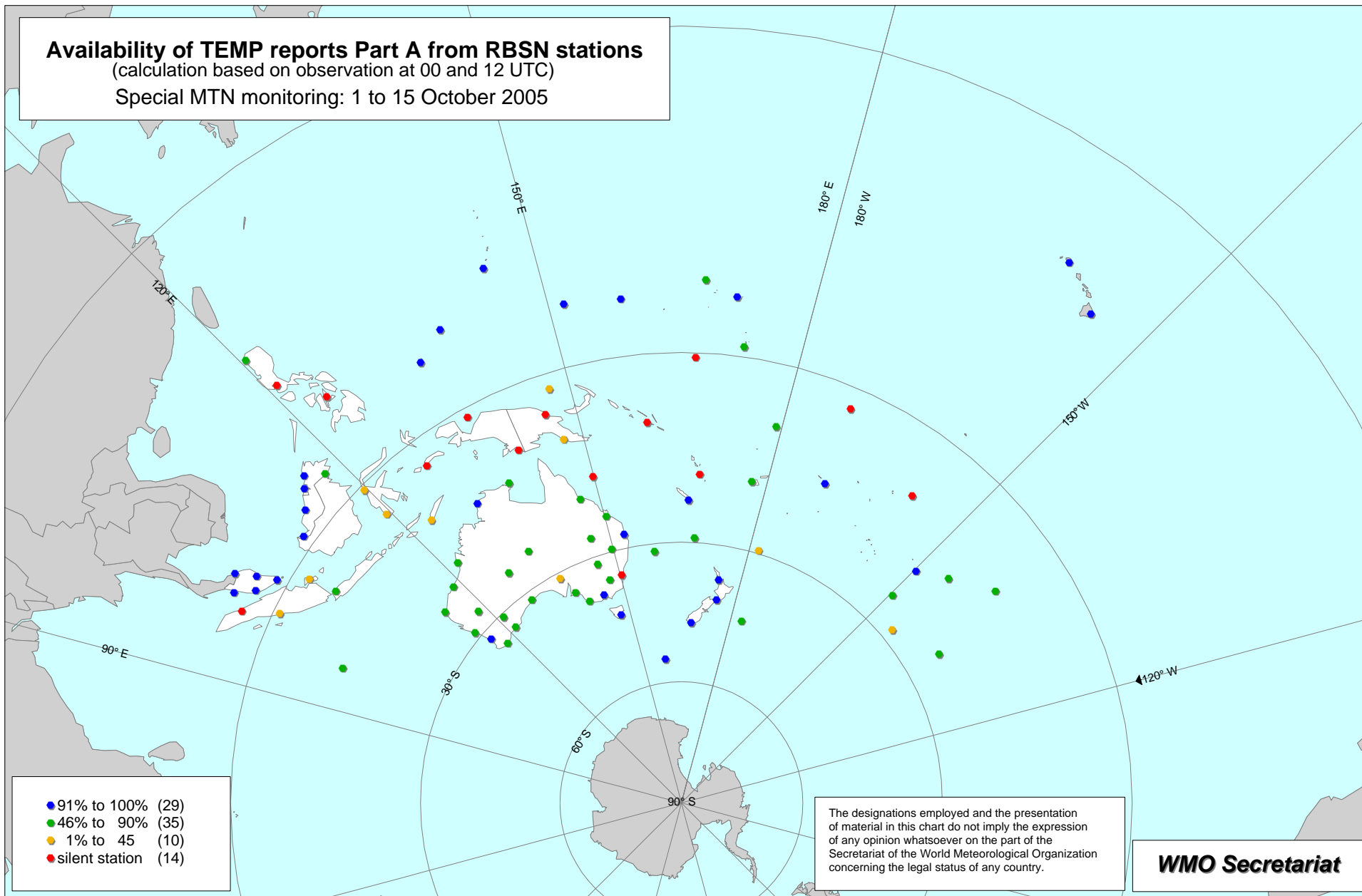


Figure 3

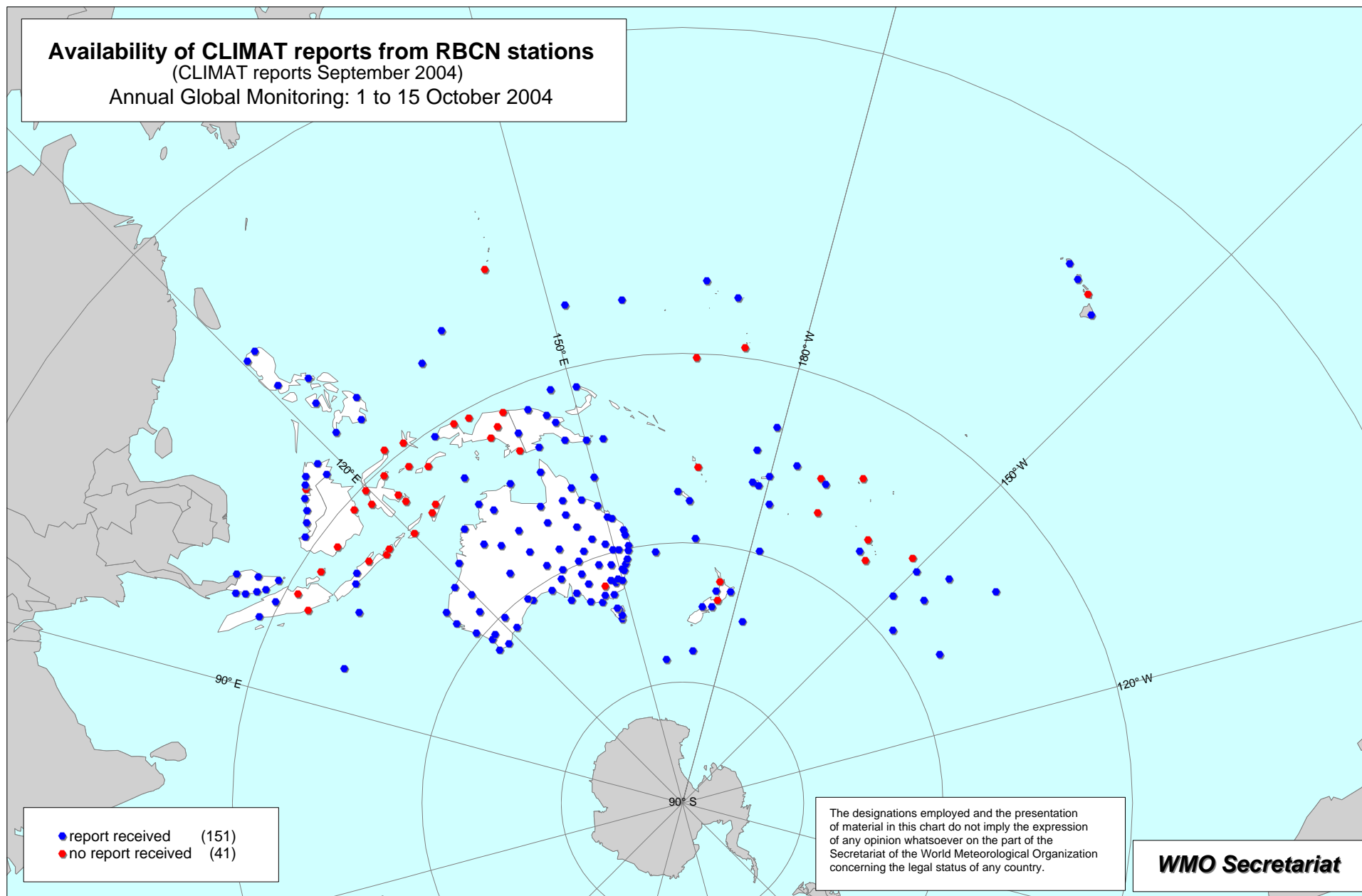
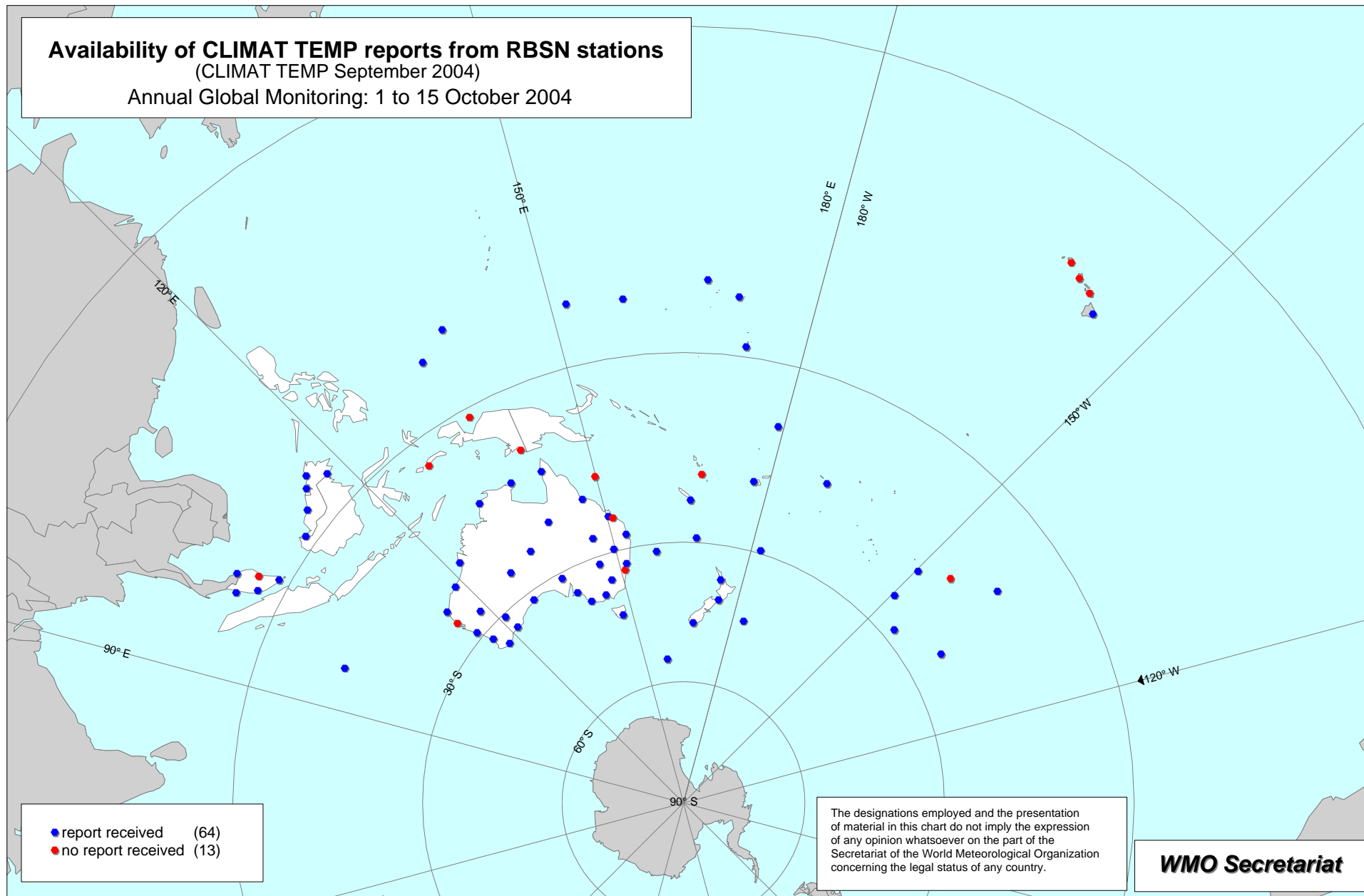


Figure 4



**Availability of SYNOP reports from Region V
on the Main Telecommunication Network**

Monitoring period: 1 to 15 January 2005, 1 to 15 April 2005, 1 to 15 July 2005 and 1 to 15 October 2005
(Special MTN Monitoring)

Geographical Location	Calculation based on combining the four RBSNs						
	RBSNs	Volume A October 2005	Percentage of reports received with reference to the four RBSNs				Average over the four monitoring periods
	Number of stations	Number of observations implemented %	January 2005	April 2005	July 2005	October 2005	
Melbourne							
Australia	128	488 (95 %)	76 %	77 %	78 %	77 %	77 %
Brunei Darussalam	1	4 (100 %)	97 %	98 %	100 %	98 %	98 %
East Timor	2	5 (63 %)	43 %	18 %	47 %	49 %	39 %
Fiji	12	48 (100 %)	87 %	88 %	78 %	63 %	79 %
French Polynesia	9	36 (100 %)	100 %	100 %	100 %	100 %	100 %
Indonesia	61	237 (97 %)	68 %	66 %	73 %	72 %	70 %
Kiribati	8	30 (94 %)	19 %	10 %	23 %	22 %	19 %
Malaysia	14	56 (100 %)	100 %	100 %	100 %	100 %	100 %
Marshall Islands	11	44 (100 %)	26 %	23 %	23 %	25 %	24 %
Micronesia, Federated States of	15	57 (95 %)	30 %	31 %	29 %	28 %	30 %
Nauru	1	4 (100 %)	98 %	98 %	98 %	100 %	99 %
New Caledonia	6	24 (100 %)	82 %	73 %	70 %	71 %	74 %
Papua New Guinea	11	31 (70 %)	31 %	33 %	40 %	40 %	36 %
Philippines	28	112 (100 %)	77 %	78 %	78 %	77 %	78 %
Samoa	1	4 (100 %)	93 %	55 %	35 %	97 %	70 %
Singapore	1	4 (100 %)	100 %	100 %	100 %	100 %	100 %
Solomon Islands	4	16 (100 %)	28 %	38 %	64 %	44 %	44 %
Tonga	4	16 (100 %)	50 %	30 %	52 %	60 %	48 %
Tuvalu	4	16 (100 %)	83 %	55 %	50 %	83 %	68 %
United Kingdom of Great Britain and Northern Ireland	1	4 (100 %)	70 %	0 %	0 %	0 %	18 %
Vanuatu	6	24 (100 %)	78 %	88 %	87 %	93 %	87 %
Total:	328	1260 (96 %)	69 %	68 %	71 %	70 %	70 %

**Availability of SYNOP reports from Region V
on the Main Telecommunication Network**

Monitoring period: 1 to 15 January 2005, 1 to 15 April 2005, 1 to 15 July 2005 and 1 to 15 October 2005
(Special MTN Monitoring)

Geographical Location	Calculation based on combining the four RBSNs						
	RBSNs	Volume A October 2005	Percentage of reports received with reference to the four RBSNs				Average over the four monitoring periods
	Number of stations	Number of observations implemented %	January 2005	April 2005	July 2005	October 2005	

Through WMC/RTH Washington							
American Samoa	4	16 (100 %)	24 %	25 %	25 %	25 %	25 %
Guam	1	4 (100 %)	100 %	97 %	98 %	97 %	98 %
United States of America	14	55 (98 %)	28 %	28 %	28 %	28 %	28 %
Total:	19	75 (99 %)	31 %	31 %	31 %	31 %	31 %

Wellington							
Cook Islands	7	28 (100 %)	58 %	22 %	35 %	42 %	39 %
New Zealand	30	120 (100 %)	99 %	99 %	97 %	97 %	98 %
Niue	1	4 (100 %)	93 %	53 %	92 %	95 %	83 %
Northern Mariana Islands	3	12 (100 %)	0 %	0 %	0 %	0 %	0 %
Palau	1	4 (100 %)	93 %	98 %	100 %	100 %	98 %
Tokelau and Swains Islands	4	16 (100 %)	25 %	25 %	0 %	0 %	13 %
Wallis and Futuna Islands	2	8 (100 %)	89 %	97 %	94 %	85 %	91 %
Total:	48	192 (100 %)	80 %	74 %	74 %	74 %	76 %

TOTAL REGION V							
Total Region V:	395	1527 (97 %)	69 %	67 %	69 %	69 %	69 %

**Availability of TEMP reports from Region V
on the Main Telecommunication Network**

Monitoring period: 1 to 15 January 2005, 1 to 15 April 2005, 1 to 15 July 2005 and 1 to 15 October 2005
(Special MTN Monitoring)

Geographical Location	Calculation based on combining the four RBSNs						
	RBSNs	Volume A October 2005	Percentage of reports received with reference to the four RBSNs				Average over the four monitoring periods
	Number of stations	Number of observations implemented %	January 2005	April 2005	July 2005	October 2005	
Melbourne							
Australia	32	38 (59 %)	63 %	58 %	62 %	59 %	61 %
Brunei Darussalam	1	2 (100 %)	50 %	100 %	97 %	100 %	87 %
Fiji	1	1 (50 %)	50 %	50 %	50 %	47 %	49 %
French Polynesia	6	10 (83 %)	61 %	59 %	58 %	57 %	59 %
Indonesia	10	11 (55 %)	13 %	14 %	17 %	12 %	14 %
Kiribati	2	2 (50 %)	23 %	15 %	23 %	25 %	22 %
Malaysia	8	16 (100 %)	87 %	97 %	100 %	96 %	95 %
Marshall Islands	2	3 (75 %)	98 %	95 %	100 %	95 %	97 %
Micronesia, Federated States of	3	6 (100 %)	97 %	96 %	91 %	98 %	96 %
Nauru	1	0 (0 %)	0 %	0 %	0 %	0 %	0 %
New Caledonia	1	2 (100 %)	93 %	97 %	100 %	93 %	96 %
Papua New Guinea	3	2 (33 %)	32 %	24 %	14 %	20 %	23 %
Philippines	3	2 (33 %)	17 %	17 %	17 %	17 %	17 %
Singapore	1	2 (100 %)	100 %	100 %	100 %	100 %	100 %
Solomon Islands	1	1 (50 %)	0 %	0 %	0 %	0 %	0 %
Tuvalu	1	1 (50 %)	50 %	30 %	27 %	47 %	39 %
Vanuatu	1	1 (50 %)	0 %	0 %	0 %	0 %	0 %
Total:	77	100 (65 %)	55 %	54 %	56 %	54 %	55 %
Through WMC/RTH Washington							
American Samoa	1	2 (100 %)	93 %	100 %	100 %	100 %	98 %
Guam	1	2 (100 %)	100 %	100 %	100 %	100 %	100 %
United States of America	2	4 (100 %)	98 %	98 %	100 %	100 %	99 %
Total:	4	8 (100 %)	98 %	99 %	100 %	100 %	99 %
Wellington							
Cook Islands	1	1 (50 %)	0 %	0 %	43 %	0 %	11 %
New Zealand	5	8 (80 %)	77 %	74 %	79 %	79 %	77 %
Palau	1	2 (100 %)	100 %	90 %	97 %	100 %	97 %
Total:	7	11 (79 %)	69 %	66 %	76 %	70 %	70 %
TOTAL REGION V							
Total Region V:	88	119 (68 %)	58 %	57 %	59 %	57 %	58 %

**Availability of CLIMAT reports at MTN centres
on the Main Telecommunication Network
Annual Global Monitoring: 1 to 15 October 2004**

Country	RBSN		Volume A	Maximum number of reports received amongst MTN centres
	Number of stations	Number of reports	Number of observations implemented	
RTH Melbourne				
Australia	79	79	53 (67 %)	78 (99 %)
Brunei Darussalam	1	1	1 (100 %)	0 (0 %)
Fiji	5	5	5 (100 %)	5 (100 %)
Micronesia, Federated States of	3	3	0 (0 %)	3 (100 %)
Indonesia	30	30	19 (63 %)	6 (20 %)
Kiribati	1	1	1 (100 %)	0 (0 %)
Marshall Islands	2	2	1 (50 %)	2 (100 %)
Malaysia	14	14	13 (93 %)	14 (100 %)
New Caledonia	2	2	2 (100 %)	2 (100 %)
Nauru	1	1	0 (0 %)	0 (0 %)
Philippines	8	8	7 (88 %)	8 (100 %)
Papua New Guinea	10	10	0 (0 %)	10 (100 %)
French Polynesia	8	8	8 (100 %)	7 (88 %)
Singapore	1	1	1 (100 %)	1 (100 %)
East Timor	2	2	0 (0 %)	0 (0 %)
Tuvalu	1	1	1 (100 %)	1 (100 %)
Vanuatu	2	2	2 (100 %)	1 (50 %)
Samoa	1	1	1 (100 %)	0 (0 %)
Total:	171	171	115 (67 %)	138 (81 %)
RTH Through WMC/RTH Washington				
American Samoa	1	1	0 (0 %)	1 (100 %)
Guam	1	1	0 (0 %)	0 (0 %)
United States of America	4	4	1 (25 %)	3 (75 %)
Total:	6	6	1 (17 %)	4 (67 %)
RTH Wellington				
Cook Islands	4	4	1 (25 %)	1 (25 %)
Niue	1	1	1 (100 %)	0 (0 %)
New Zealand	8	8	6 (75 %)	6 (75 %)
Palau	1	1	0 (0 %)	1 (100 %)

**Availability of CLIMAT reports at MTN centres
on the Main Telecommunication Network
Annual Global Monitoring: 1 to 15 October 2004**

Country	RBSN		Volume A	Maximum number of reports received amongst MTN centres
	Number of stations	Number of reports	Number of observations implemented	
RTH Wellington				
Wallis and Futuna Islands	1	1	1 (100 %)	1 (100 %)
Total:	15	15	9 (60 %)	9 (60 %)
Total Region V				
Total:	192	192	125 (65 %)	151 (79 %)

**Availability of CLIMAT TEMP reports at MTN centres
on the Main Telecommunication Network
Annual Global Monitoring: 1 to 15 October 2004**

Country	RBSN		Volume A	Maximum number of reports received amongst MTN centres
	Number of stations	Number of reports	Number of observations implemented	
RTH RTH Melbourne				
Australia	37	37	34 (92 %)	33 (89 %)
Brunei Darussalam	1	1	1 (100 %)	1 (100 %)
Fiji	1	1	1 (100 %)	1 (100 %)
Micronesia, Federated State	3	3	0 (0 %)	3 (100 %)
Indonesia	3	3	0 (0 %)	0 (0 %)
Kiribati	1	1	1 (100 %)	1 (100 %)
Marshall Islands	2	2	0 (0 %)	2 (100 %)
Malaysia	8	8	7 (88 %)	7 (88 %)
New Caledonia	1	1	1 (100 %)	1 (100 %)
French Polynesia	6	6	6 (100 %)	5 (83 %)
Singapore	1	1	1 (100 %)	1 (100 %)
Tuvalu	1	1	1 (100 %)	1 (100 %)
Vanuatu	1	1	1 (100 %)	0 (0 %)
Total:	66	66	54 (82 %)	56 (85 %)
RTH Through WMC/RTH Washington				
American Samoa	1	1	1 (100 %)	1 (100 %)
United States of America	4	4	2 (50 %)	1 (25 %)
Total:	5	5	3 (60 %)	2 (40 %)
RTH RTH Wellington				
New Zealand	5	5	5 (100 %)	5 (100 %)
Palau	1	1	0 (0 %)	1 (100 %)
Total:	6	6	5 (83 %)	6 (100 %)
RTH Total Region V				
Total:	77	77	62 (81 %)	64 (83 %)

List of silent stations for SYNOP in RA V

Monitoring period: 1-15 January 2005, 1-15 April 2005, 1-15 July 2005 and 1-15 October 2005
(Special MTN Monitoring)

Country	January 2005	April 2005	July 2005	October 2005	All periods
American Samoa					
	91764	91764	91764	91764	91764
	91766	91766	91766	91766	91766
	91768	91768	91768	91768	91768
Total:	3	3	3	3	3
Australia					
	94184	94184	94184	94184	94184
	94200	94200	94200	94200	94200
	94211	94211	94211	94211	94211
	94236	94236	94236	94236	94236
			94248	94248	
	94255	94255	94255	94255	94255
	94275	94275	94275	94275	94275
	94283	94283	94283	94283	94283
	94313	94313	94313	94313	94313
	94324	94324	94324	94324	94324
	94327	94327	94327		
	94333	94333	94333	94333	94333
	94366	94366	94366	94366	94366
	94388	94388	94388	94388	94388
	94393	94393		94393	
	94451	94451	94451	94451	94451
	94477	94477	94477	94477	94477
	94488	94488	94488	94488	94488
	94500	94500	94500	94500	94500
	94642	94642	94642	94642	94642
	94643	94643	94643	94643	94643
	94700	94700	94700	94700	94700
	94866	94866	94866	94866	94866
				94968	
	95146	95146	95146	95146	95146
		95322	95322	95322	
	95666		95666	95666	
Total:	24	24	25	26	21
Cook Islands					
	91809	91809	91809	91809	91809
		91812	91812		
			91841	91841	
	91848	91848	91848	91848	91848
Total:	2	3	4	3	2

List of silent stations for SYNOP in RA V

Monitoring period: 1-15 January 2005, 1-15 April 2005, 1-15 July 2005 and 1-15 October 2005
(Special MTN Monitoring)

Country	January 2005	April 2005	July 2005	October 2005	All periods
East Timor					
	97385	97385	97385	97385	97385
Total:	1	1	1	1	1
Fiji					
	91652		91660	91660	
				91699	
Total:	1	0	1	2	0
Indonesia					
		96147			
	97580	97580	97580	96781	
		97600		97580	
Total:	1	3	1	2	1
Kiribati					
	91487				
	91533	91533	91533	91533	91533
	91612				
	91629			91623	
Total:	4	1	1	3	1
Marshall Islands					
	91251	91251	91251	91251	91251
	91365	91365	91365	91365	91365
	91369				
		91371			
	91374	91374	91374	91374	91374
	91377	91377	91377	91377	91377
	91442	91442	91442	91442	91442
Total:	6	6	5	5	5
Micronesia, Federated States of					
	91204	91204	91204	91204	91204
	91328	91328	91328	91328	91328
	91338	91338	91338	91338	91338
	91343	91343	91343	91343	91343
	91352	91352	91352	91352	91352
	91355	91355	91355	91355	91355

List of silent stations for SYNOP in RA V

Monitoring period: 1-15 January 2005, 1-15 April 2005, 1-15 July 2005 and 1-15 October 2005
(Special MTN Monitoring)

Country	January 2005	April 2005	July 2005	October 2005	All periods
Micronesia, Federated States of					
Total:	91411 7	91411 7	91411 7	91411 7	91411 7
New Caledonia					
Total:	91574 1	91574 1	91574 1	91574 1	91574 1
Northern Mariana Islands					
Total:	91221 91222 91231 3	91221 91222 91231 3	91221 91222 91231 3	91221 91222 91231 3	91221 91222 91231 3
Papua New Guinea					
Total:	92100 1	92100 1	92100 1	0	0
Philippines					
Total:	98329 98748 2	98135 98329 98748 3	98135 98329 98748 3	98135 98329 98526 98748 4	98329 98748 2
Tokelau and Swains Islands					
Total:	91720 91724 91727 3	91720 91724 91727 3	91720 91723 91724 91727 4	91720 91723 91724 91727 4	91720 91724 91727 3
Tonga					
Total:	91780 1	91780 1	91780 1	91780 1	91780 1
United Kingdom of Great Britain and Northern Ireland					
Total:	0	91961 1	91961 1	91961 1	0

List of silent stations for SYNOP in RA V

Monitoring period: 1-15 January 2005, 1-15 April 2005, 1-15 July 2005 and 1-15 October 2005
(Special MTN Monitoring)

Country	January 2005	April 2005	July 2005	October 2005	All periods
United States of America					
	91066	91066	91066	91066	91066
	91158	91158	91158	91158	91158
	91159	91159	91159	91159	91159
	91163	91163	91163	91163	91163
	91166	91166	91166	91166	91166
	91168	91168	91168	91168	91168
	91194	91194	91194	91194	91194
	91275	91275	91275	91275	91275
	91287	91287	91287	91287	91287
	91294	91294	91294	91294	91294
Total:	10	10	10	10	10
Total RA V:	70	71	72	76	61

List of silent stations for TEMP in RA V

Monitoring period: 1-15 January 2005, 1-15 April 2005, 1-15 July 2005 and 1-15 October 2005
(Special MTN Monitoring)

Country	January 2005	April 2005	July 2005	October 2005	All periods
Australia	94299 94750	94299 94750	94299 94750	94299 94750	94299 94750
Total:	2	2	2	2	2
Cook Islands				91801	
Total:	0	0	0	1	0
Indonesia	96035 96237	96237		96035	
	97724 97980	97724	97724 97980	97560 97724 97980	97724
Total:	4	2	2	4	1
Kiribati	91701	91701	91701	91701	91701
Total:	1	1	1	1	1
Malaysia	48657				
Total:	1	0	0	0	0
Nauru	91530	91530	91530	91530	91530
Total:	1	1	1	1	1
Papua New Guinea	92014	92014	92014	92014	92014
Total:	1	1	2	1	1
Philippines	98429 98646	98429 98646	98429 98646	98429 98646	98429 98646
Total:	2	2	2	2	2
Solomon Islands	91517	91517	91517	91517	91517

List of silent stations for TEMP in RA V

Monitoring period: 1-15 January 2005, 1-15 April 2005, 1-15 July 2005 and 1-15 October 2005
(Special MTN Monitoring)

Country	January 2005	April 2005	July 2005	October 2005	All periods
Solomon Islands					
Total:	1	1	1	1	1
Vanuatu					
	91557	91557	91557	91557	91557
Total:	1	1	1	1	1
Total RA V:	14	11	12	14	10

List of silent stations for CLIMAT reports in RA V

Annual Global Monitoring: 1-15 October 2004

Country	Silent stations
Australia Total:	94869 1 station
Brunei Darussalam Total:	96315 1 station
Indonesia Total:	96195 96249 96253 96633 96645 96935 97014 97072 97086 97120 97146 97192 97230 97240 97340 97430 97530 97560 97600 97686 97690 97724 97796 97980 24 stations
Kiribati Total:	91610 1 station
Nauru Total:	91531 1 station
French Polynesia Total:	91929 1 station
East Timor Total:	97385 97390 2 stations
Vanuatu Total:	91555 1 station
Samoa Total:	91762 1 station
Guam Total:	91212 1 station
United States of America Total:	91190 1 station
Cook Islands Total:	91812 91831 91848 3 stations
Niue	91824

List of silent stations for CLIMAT reports in RA V

Annual Global Monitoring: 1-15 October 2004

Country	Silent stations
Total:	1 station
New Zealand	93110 93420
Total:	2 stations
Total RA V:	41 stations

List of silent stations for CLIMAT TEMP reports in RA V

Annual Global Monitoring: 1-15 October 2004

Country	Silent stations
Australia Total:	94299 94300 94380 94767 4 stations
Indonesia Total:	97560 97724 97980 3 stations
Malaysia Total:	48657 1 station
French Polynesia Total:	91943 1 station
Vanuatu Total:	91557 1 station
United States of America Total:	91165 91182 91190 3 stations
Total RA V:	13 stations