

WORLD METEOROLOGICAL ORGANIZATION

!

Results of the specific monitoring of the exchange of Antarctic meteorological data

1. Description of the presentation of the monitoring results

The monitoring results compiled by the WMO Secretariat are presented in Figures 1 to 4, and Tables I to IX as follows:

- (a) Figures 1 to 4 show the availability of SYNOP reports and part A or TEMP, CLIMAT and CLIMAT TEMP reports at the monitoring centres in a chart format.
- (b) Table I includes a compilation of the information available in the Secretariat related to the collection of data from the stations comprising the Antarctic Basic Synoptic Network (ABSIN). This information includes:
 - (i) The index number of the station, the name of the station, the programme of observation of the station and the country operating the station, in accordance with the information given in the WMO Publication No. 9 – Volume A;
 - (ii) The means used to transmit the data from the station to the collecting centre, the GTS Regional Telecommunication Hub (RTH) which will be the first to relay the data on the GTS;
 - (iii) The abbreviated headings of the bulletins in which SYNOP reports from the stations were received by MTN centres during the special MTN monitoring (SMM) exercise (same period of monitoring); it is indicated whether the abbreviated headings are included in the WMO Publication NO.9 – Volume C;
 - (iv) The number of reports received from the stations during the specific monitoring of the exchange of Antarctic Data (SAM) and the SMM exercise.
- (c) Tables II to VIII contain monitoring results for:
 - (i) SYNOP reports (Table II),
 - (ii) Parts A, B, C and D of TEMP reports (Tables III to VI),
 - (iii) CLIMAT reports (Table VII),
 - (iv) CLIMAT TEMP reports (Table VIII) ;

The format of presentation used in this respect is the format A (see paragraph 2 below).

- (d) Information relating to the implementation of monitoring procedures at centres is compiled in Table IX.

2. Format A: Availability of reports received at monitoring centres
- 2.1. Format A is used to present the monitoring results with the aim of comparing the availability of data issued from each Antarctic station at the monitoring centres. The monitoring results relating to each Antarctic station are presented in three sections:
 - (a) Section 1: stations transmitting their reports via ARGOS,
 - (b) Section 2: stations transmitting their reports to an Antarctic collecting centre,
 - (c) Section 3: stations transmitting their reports to a GTS centre located outside Antarctica.

In each of these sections 2 and 3, the stations are grouped under the associated Antarctic collecting centre or the associated GTS centre located outside Antarctica.
- 2.2. The first column of the Tables contains the index numbers of the stations and the observation programmes of the stations for the various standard times of observation as required from the Antarctic Basic Synoptic Network (ABSBN). The second column gives the number of stations included in the ABSBN.
- 2.3. The remaining columns contain figures showing the availability of reports received from each Antarctic station at each centre listed in the heading. These figures are percentages calculated with reference to reports required from the ABSN/ABCN and are presented on one or several lines for each station according to the type of data as follows
 - (a) for SYNOP reports, daily average of reports received within one hour, three hours and 12 hours of the standard observation time ;
 - (b) for TEMP reports, daily average of reports received within three hours and twelve hours of the standard observation time ;
 - (c) for CLIMAT and CLIMAT TEMP reports, reports received during the monitoring period.

Figure 1

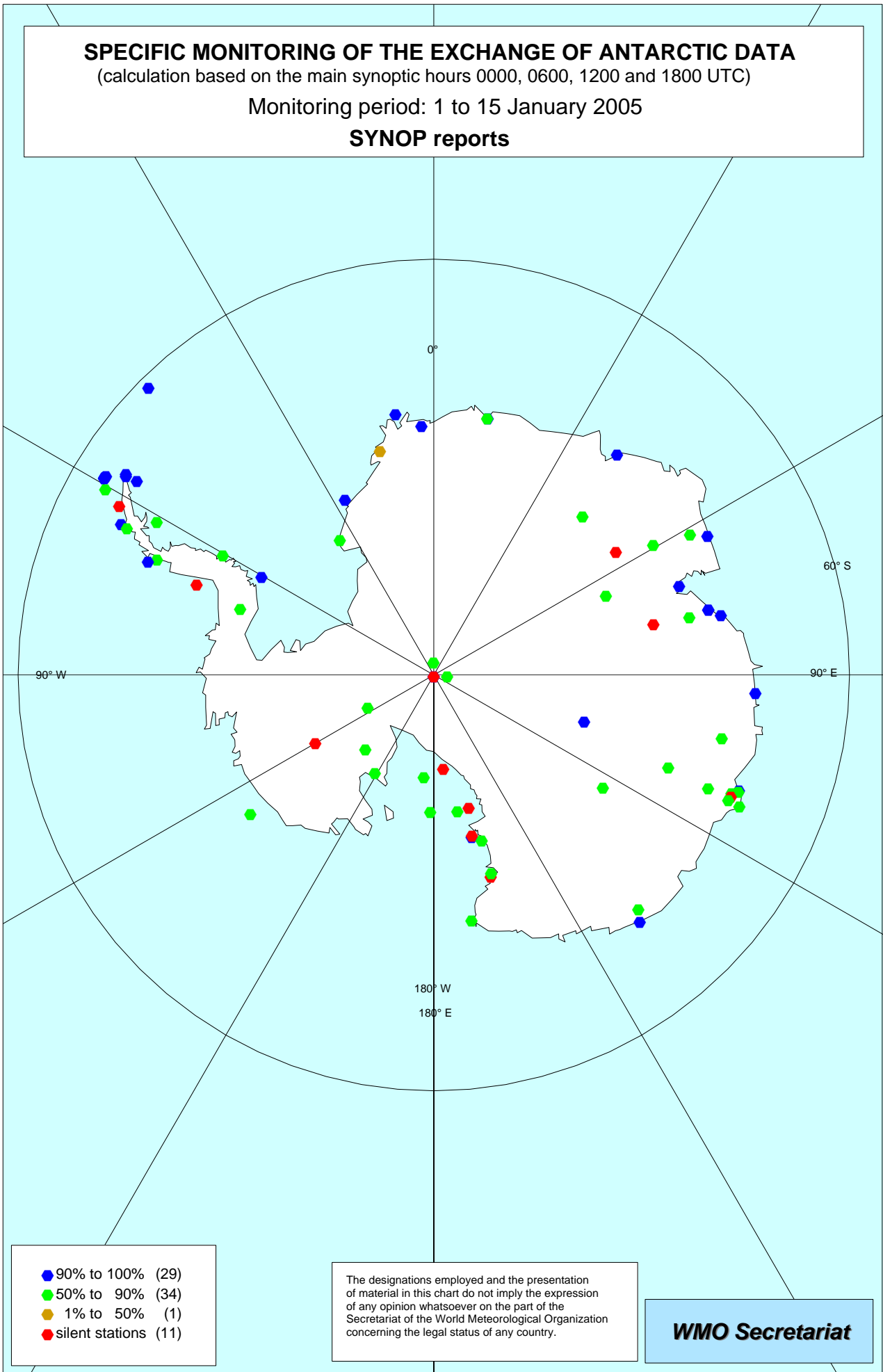


Figure 2

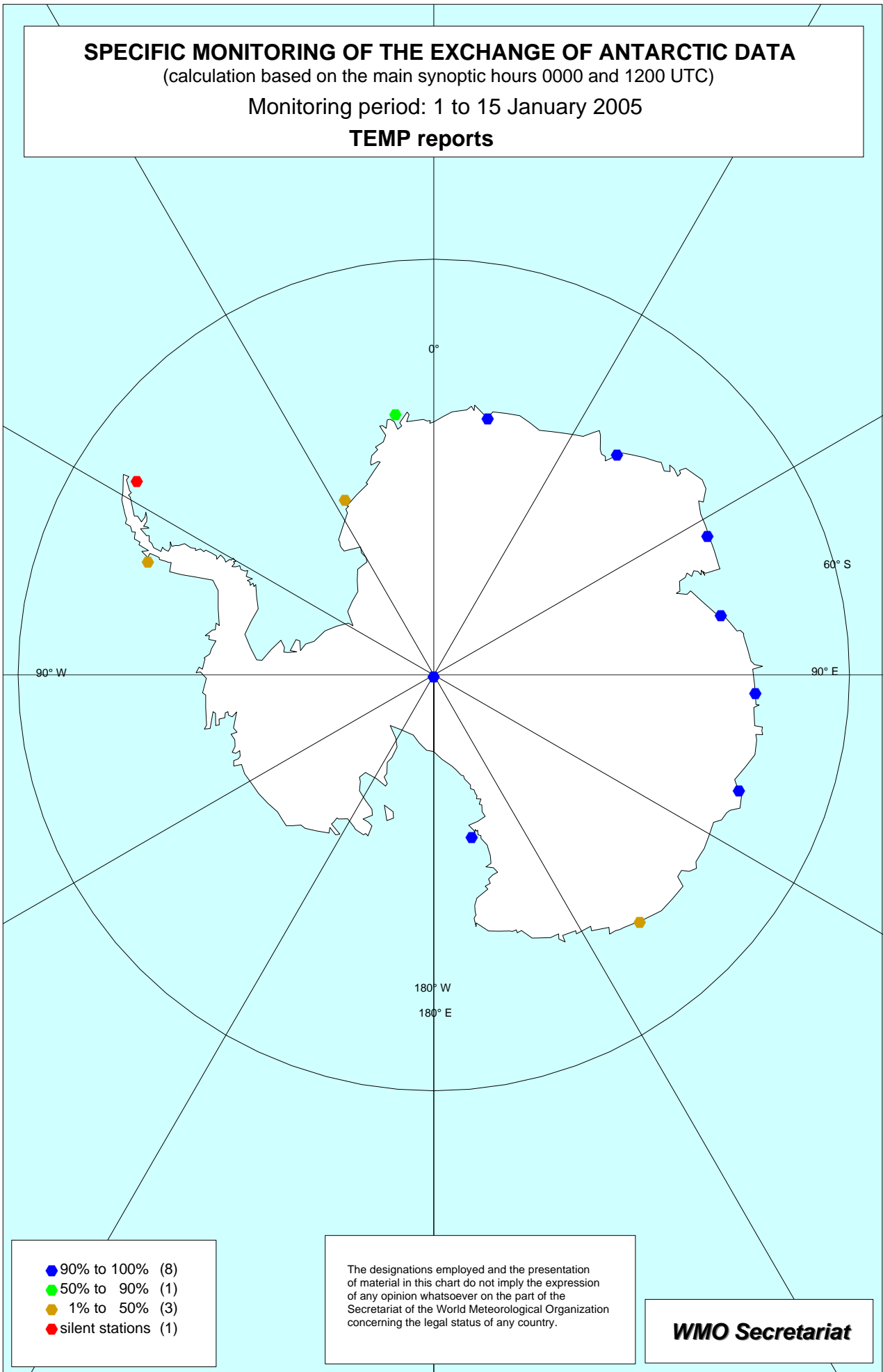


Figure 3

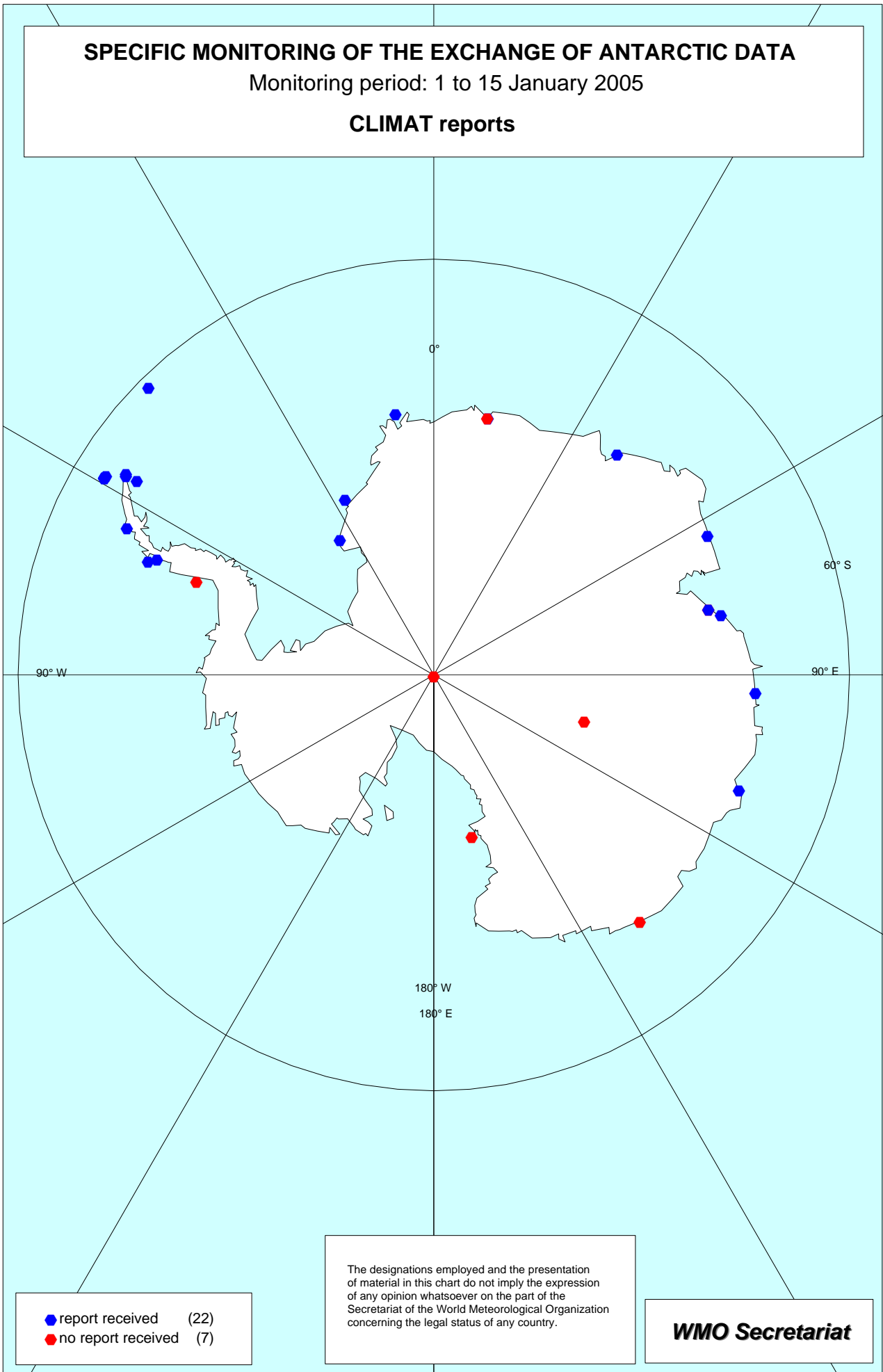


Figure 4

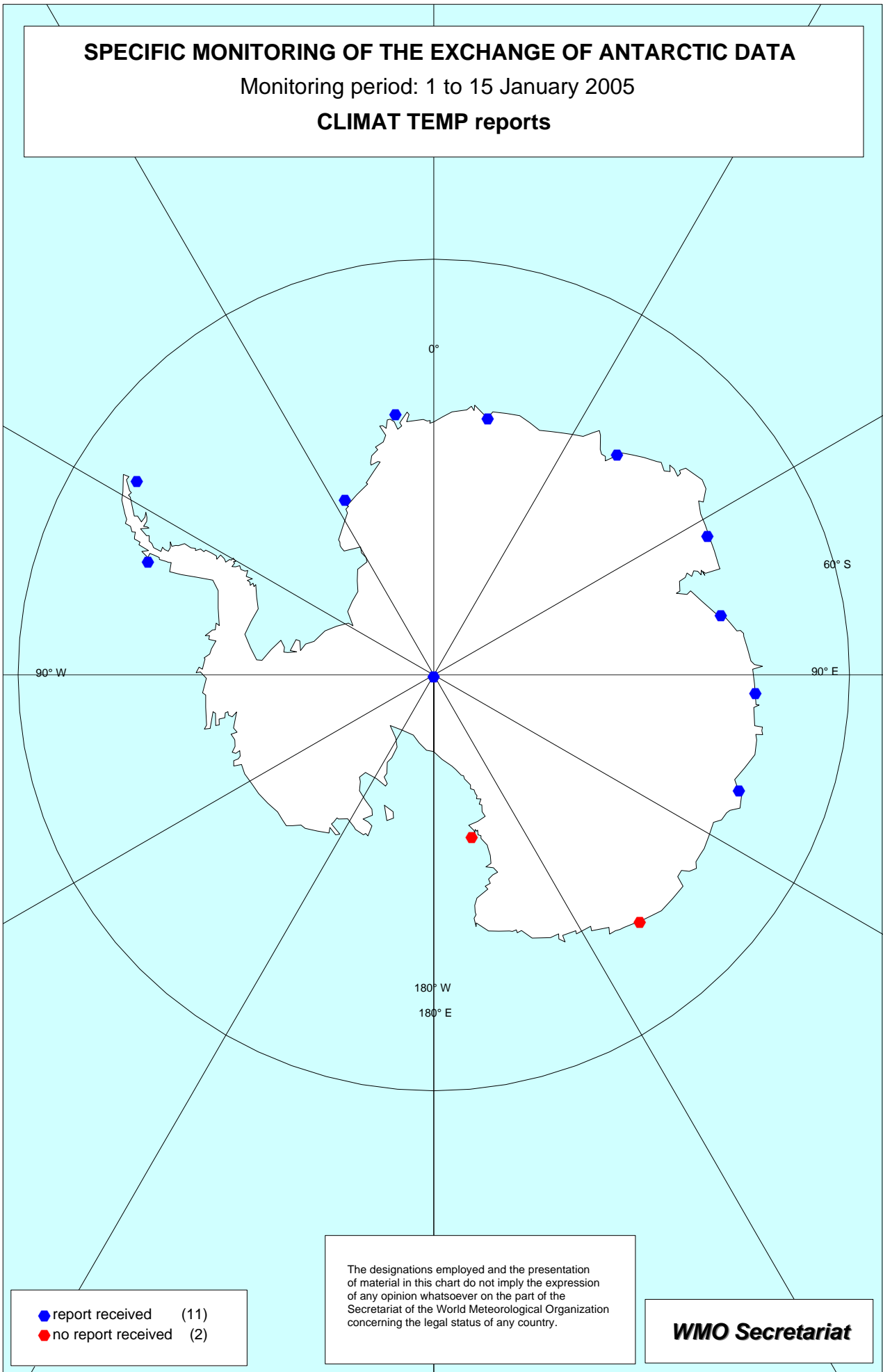


TABLE I

Compilation of the information available in the Secretariat related to the collection of data from stations included in the Antarctic Basic Synoptic Network

Station Index	Name	Programme of observation				Means used to transmit data to the collecting centre	Collecting centre	RTH	Abbreviated heading	In Volume C1	Number of SYNOP reports received in January 2005		Station operated by
		00	06	12	18						SAM	SMM	
88963	BASE ESPERANZA	X	X	X	X	HF-SSB	Marambio	Buenos-Aires (SABM)	SMAA01 SAWB	Y	57	52	ARGENTINA
88968	BASE ORCADAS	X	X	X	X	HF-SSB	Marambio	Buenos-Aires (SABM)	SMAA01 SAWB	Y	56	51	ARGENTINA
89002	NEUMAYER	X	X+	X	X	DCP	Darmstadt	Offenbach (EUMS)	SMAA01 EDZW	Y	60	60	GERMANY
89004	S.A.N.A.E. AWS	X	X	X	X	VSAT	Pretoria	Pretoria (FAPR)	SMAA01 FASE	N	55	51	SOUTH AFRICA
89009	AMUNDSEN-SCOTT	X	X	X	X	HF radio/HF modem Email	McMurdo (NZCM)	Wellington (NZKL)	SMAA80 AMMC	Y	57	55	THE U.S.A.
89009									SMAA01 NZCM	Y			
89009									SMAA01 NZSP	Y			
89014	NORDENSKIOLD BASE	X	X	X	X	ARGOS	Toulouse	Toulouse (LFPW)	SMFI40 EFKL	Y	5	5	FINLAND
89022	HALLEY	X	X	X	X	DCP	Darmstadt	Offenbach (EUMS)	SMAA01 EUMS	Y	56	46	THE UNITED KINGDOM
89034	BASE BELGRANO II	X	.	X	X	HF-SSB	Marambio	Buenos-Aires (SABM)	SMAA01 SAWB	Y	50	41	ARGENTINA
89050	BELLINGSHAUSEN AWS	X	X	X	X	Inmarsat	St Petersburg	Moscow (RUMS)	SMAA10 RUML	Y	60	60	THE RUSSIAN FEDERATION
89053	BASE JUBANY	X	.	X	X	HF-SSB	Marambio	Buenos-Aires (SABM)	SMAA01 SAWB	Y	57	55	ARGENTINA
89054	DINAMET-URUGUAY	X	X	X	X	HF-USB Voice	Frei (SCEF)	Buenos-Aires (SABM)	SMDL01 EDZW	Y	60	60	URUGUAY

Station Index	Name	Programme of observation				Means used to transmit data to the collecting centre	Collecting centre	RTH	Abbreviated heading	In Volume C1	Number of SYNOP reports received in January 2005		Station operated by
		00	06	12	18						SAM	SMM	
89054								SMAA01 SCEF	Y				
89054								SMAA02 SCEF	N				
89055	BASE MARAMBIO (CENTRO MET. ANTARTICO)	X	X	X	X	Not applicable	Marambio	Buenos-Aires (SABM)	SMAA01 SAWB	Y	58	56	ARGENTINA
89056	CENTRO MET. ANTARTICO PDTE. EDUARDO FREI	X	X	X	X	Not applicable	Frei (SCEF)	Buenos-Aires (SABM)	SMDL01 EDZW	Y	60	60	CHILE
89056								SMAA01 SCEF	Y				
89056								SMAA02 SCEF	N				
89058	GREAT WALL	X	X	X	X	HF-LSB TTY 50 bauds	Frei (SCEF)	Buenos-Aires (SABM)	SMDL01 EDZW	Y	60	59	CHINA
89058								SMAA01 SCEF	Y				
89058								SMAA02 SCEF	N				
89059	BASE BERNARDO O'HIGGINS	X	X	X	X	HF-SSB Voice	Frei (SCEF)	Buenos-Aires (SABM)	SMDL01 EDZW	Y	60	60	CHILE
89059								SMAA01 SCEF	Y				
89059								SMAA02 SCEF	N				
89061	PALMER STATION	UHF	Rothera	Exeter (EGRR)	SMDL01 EDZW	Y	59	59	THE U.S.A.

Station Index	Name	Programme of observation				Means used to transmit data to the collecting centre	Collecting centre	RTH	Abbreviated heading	In Volume C1	Number of SYNOP reports received in January 2005		Station operated by
		00	06	12	18						SAM	SMM	
89061								SMAA41 KPAL	N				
89061								SMAA01 SABM	N				
89062	ROTHERA	X	X	X	X	Not applicable	Rothera	Exeter (EGRR)	Y	58	59	THE UNITED KINGDOM	
89062								SMAA01 EGRR	N				
89062								SMAA01 SABM	N				
89062								SMAA01 SAWB	Y				
89063	VERNADSKY	X	X	X	X	HF Voice	Rothera	Exeter (EGRR)	Y	46	46	UKRAINE	
89063								SMAA01 EGRR	N				
89063								SMAA01 SABM	N				
89063								SMAA01 SAWB	Y				
89064	JUAN CARLOS I AWS	DCP	Darmstadt	Offenbach (EUMS)		42		SPAIN	
89066	BASE SAN MARTIN	X	.	X	X	HF-SSB	Marambio	Buenos-Aires (SABM)	Y	52	43	ARGENTINA	
89108	UNIV. WI ID 8985 (HENRY)	X	X	X	X	ARGOS	Wallops	Washington (KWBC)	N	51	51	THE U.S.A. (UNIVERSITY OF WISCONSIN)	

Station Index	Name	Programme of observation				Means used to transmit data to the collecting centre	Collecting centre	RTH	Abbreviated heading	In Volume C1	Number of SYNOP reports received in January 2005		Station operated by
		00	06	12	18						SAM	SMM	
89208	UNIV. WI ID 8987 (CLEAN AIR)	X	X	X	X	ARGOS	Wallops	Washington (KWBC)			0		THE U.S.A. (UNIVERSITY OF WISCONSIN)
89251	KING SEJONG	X	X	X	X	HF Voice	Frei (SCEF)	Buenos-Aires (SABM)	SMDL01 EDZW	Y	60	60	THE REPUBLIC OF KOREA
89251								SMAA01 SCEF		Y			
89251								SMAA02 SCEF		N			
89257	UNIV. WI ID 8925 (LIMBERT AWS)	X	X	X	X	ARGOS	Wallops	Washington (KWBC)	SMAA14 KARS	N	56	3	THE U.S.A. (UNIVERSITY OF WISCONSIN)
89261	UNIV. WI ID 8947 (RACER ROCK)	X	X	X	X	ARGOS	Wallops	Washington (KWBC)			0		THE U.S.A. (UNIVERSITY OF WISCONSIN)
89262	UNIV. WI ID 8926 (LARSEN ICE SHELF)	X	X	X	X	ARGOS	Wallops	Washington (KWBC)			45		THE U.S.A. (UNIVERSITY OF WISCONSIN)
89264	UNIV. WI ID 8920 (URANUS)	X	X	X	X	ARGOS	Wallops	Washington (KWBC)			0		THE U.S.A. (UNIVERSITY OF WISCONSIN)
89266	UNIV. WI ID 8902 (BUTLER ISLAND)	X	X	X	X	ARGOS	Wallops	Washington (KWBC)	SMAA14 KARS	N	46	46	THE U.S.A. (UNIVERSITY OF WISCONSIN)
89272	UNIV. WI ID 8917 (SKI-HI)	X	X	X	X	ARGOS	Wallops	Washington (KWBC)	SMAA14 KARS	N	50	50	THE U.S.A. (UNIVERSITY OF WISCONSIN)
89314	UNIV. WI ID 21358 (THERESA)	X	X	X	X	ARGOS	Wallops	Washington (KWBC)	SMAA14 KARS	N	50	50	THE U.S.A. (UNIVERSITY OF WISCONSIN)
89324	UNIV. WI ID 8903 (BYRD STATION)	X	X	X	X	ARGOS	Wallops	Washington (KWBC)			0		THE U.S.A. (UNIVERSITY OF WISCONSIN)
89327	UNIV. WI ID 8981 (MOUNT SIPLE)	X	X	X	X	ARGOS	Wallops	Washington (KWBC)			42		THE U.S.A. (UNIVERSITY OF WISCONSIN)

Station Index	Name	Programme of observation				Means used to transmit data to the collecting centre	Collecting centre	RTH	Abbreviated heading	In Volume C1	Number of SYNOP reports received in January 2005		Station operated by
		00	06	12	18						SAM	SMM	
89332	UNIV. WI ID 21361 (ELIZABETH)	X	X	X	X	ARGOS	Wallops	Washington (KWBC)	SMAA14 KARS	N	50	47	THE U.S.A. (UNIVERSITY OF WISCONSIN)
89345	UNIV. WI ID 8900 (SIPLE DOME)	X	X	X	X	ARGOS	Wallops	Washington (KWBC)	SMAA14 KARS	N	52	2	THE U.S.A. (UNIVERSITY OF WISCONSIN)
89376	UNIV. WI ID 8911 (GILL)	X	X	X	X	ARGOS	Wallops	Washington (KWBC)	SMAA14 KARS	N	51	51	THE U.S.A. (UNIVERSITY OF WISCONSIN)
89377	UNIV. WI ID 8908 (LETTAU)	X	X	X	X	ARGOS	Wallops	Washington (KWBC)	SMAA14 KARS	N	49	49	THE U.S.A. (UNIVERSITY OF WISCONSIN)
89512	NOVOLAZAREVSKAJA	X	X	X	X	Inmarsat	St Petersburg	Moscow (RUMS)	SMAA10 RUML	Y	60	59	THE RUSSIAN FEDERATION
89514	MAITRI	X	X	X	X	HF/TTY-TELEX	New Delhi	New Delhi (DEMS)	SMAA10 DEMS	N	50	51	INDIA
89532	SYOWA	X	X	X	X	DCP	Darmstadt	Offenbach (EUMS)	SMAA80 AMMC	Y	56	51	JAPAN
89532									SMAA01 EUMS	Y			
89564	MAWSON	X	X	X	X	Satellite circuit	Hobart	Melbourne (AMMC)	SMAA01 AMMC	Y	60	60	AUSTRALIA
89564									SMAA80 AMMC	Y			
89568	DAVIS LGB 35 AWS	X	X	X	X	ARGOS	Toulouse	Toulouse (LFPW)	SMAA17 LFPW	N	53	53	AUSTRALIA
89571	DAVIS	X	X	X	X	Not applicable	Davis	Melbourne (AMMC)	SMAA01 AMMC	Y	60	60	AUSTRALIA
89571									SMAA80 AMMC	Y			

Station Index	Name	Programme of observation				Means used to transmit data to the collecting centre	Collecting centre	RTH	Abbreviated heading	In Volume C1	Number of SYNOP reports received in January 2005		Station operated by
		00	06	12	18						SAM	SMM	
89571								SMNV01 NVVV	Y				
89573	ZHONGSHAN	X	X	X	X	UHF/voice	Davis	Melbourne (AMMC)	SMAA01 AMMC	Y	60	55	CHINA
89573								SMAA80 AMMC	Y				
89573								SMNV01 NVVV	Y				
89574	PROGRESS					Inmarsat	St Petersburg	Moscow (RUMS)	SMAA10 RUML	Y	60	59	RUSSIAN FEDERATION
89576	DAVIS (LGB 69)	X	X	X	X	ARGOS	Toulouse	Toulouse (LFPW)	SMAA17 LFPW	N	48	48	AUSTRALIA
89592	MIRNYJ	X	X	X	X	Inmarsat	St Petersburg	Moscow (RUMS)	SMAA80 AMMC	Y	60	59	THE RUSSIAN FEDERATION
89592								SMAA10 RUML	Y				
89606	VOSTOK	X	X	X	X	Inmarsat	St Petersburg	Moscow (RUMS)	SMAA80 AMMC	Y	60	51	THE RUSSIAN FEDERATION
89606								SMAA10 RUML	Y				
89610	CASEY (CAPE POINSETT)	X	X	X	X	ARGOS	Toulouse	Toulouse (LFPW)	SMAA17 LFPW	N	45	45	AUSTRALIA
89611	CASEY	X	X	X	X	Satellite circuit	Hobart	Melbourne (AMMC)	SMAA01 AMMC	Y	60	60	AUSTRALIA
89611								SMAA80 AMMC	Y				

Station Index	Name	Programme of observation				Means used to transmit data to the collecting centre	Collecting centre	RTH	Abbreviated heading	In Volume C1	Number of SYNOP reports received in January 2005		Station operated by
		00	06	12	18						SAM	SMM	
89611								SMNV01 NVVV	Y				
89612	CASEY AIRSTRIP AWS 2	X	X	X	X	ARGOS	Toulouse	Toulouse (LFPW)	SMAA17 LFPW	N	44	43	AUSTRALIA
89614	CASEY (UPPER PETERSON RUNWAY)	X	X	X	X	ARGOS	Toulouse	Toulouse (LFPW)	SMAA17 LFPW	N	48	48	AUSTRALIA
89618	CASEY (HALFWAY)	X	X	X	X	ARGOS	Toulouse	Toulouse (LFPW)			0		AUSTRALIA
89642	DUMONT D'URVILLE	X	X	X	X*	Inmarsat	Toulouse	Toulouse (LFPW)	SMAA80 AMMC	Y	58	58	FRANCE
89642								SMAA01 LFPW	Y				
89662	BASE BAIJA TERRA NOVA	X	X	X	X	Inmarsat	Rome	Rome (LIIB)			0		ITALY
89664	MCMURDO	X	X	X	X	Not applicable	McMurdo (NZCM)	Wellington (NZKL)	SMAA01 NZCM	Y	60	60	THE U.S.A.
89667	UNIV. WI ID 8927 (PEGASUS NORTH)	X	X	X	X	ARGOS	Wallops	Washington (KWBC)			0		THE U.S.A. (UNIVERSITY OF WISCONSIN)
89744	UNIV. WI ID 8918 (RELAY STAT)	X	X	X	X	ARGOS	Wallops	Washington (KWBC)	SMAA14 KARS	N	47	46	THE U.S.A. (UNIVERSITY OF WISCONSIN)
89757	MAWSON (LGB 20 AWS)	X	X	X	X	ARGOS	Toulouse	Toulouse (LFPW)	SMAA80 AMMC	Y	0	0	AUSTRALIA
89758	MAWSON (LGB10 AWS)	X	X	X	X	ARGOS	Toulouse	Toulouse (LFPW)	SMAA17 LFPW	N	39	37	AUSTRALIA
89762	MAWSON (LGB 00 GE 03 AWS)	X	X	X	X	ARGOS	Toulouse	Toulouse (LFPW)	SMAA80 AMMC	Y	42	0	AUSTRALIA

Station Index	Name	Programme of observation				Means used to transmit data to the collecting centre	Collecting centre	RTH	Abbreviated heading	In Volume C1	Number of SYNOP reports received in January 2005		Station operated by
		00	06	12	18						SAM	SMM	
89767	AMERY	X	X	X	X	ARGOS	Toulouse	Toulouse (LFPW)	SMAA17 LFPW	N	60	60	AUSTRALIA
89774	DAVIS (LGB 59 AWS)	X	X	X	X	ARGOS	Toulouse	Toulouse (LFPW)			0		AUSTRALIA
89799	UNIV. WI ID 8924 (NICO)	X	X	X	X	ARGOS	Wallops	Washington (KWBC)	SMAA14 KARS	N	51	49	THE U.S.A. (UNIVERSITY OF WISCONSIN)
89803	CASEY (TRAVERSE GF08)	X	X	X	X	ARGOS	Toulouse	Toulouse (LFPW)			50		AUSTRALIA
89811	CASEY (LAW DOME SUMMIT)	X	X	X	X	ARGOS	Toulouse	Toulouse (LFPW)	SMAA17 LFPW	N	50	50	AUSTRALIA
89812	AO28 AWS, SOUTH OF LAW DOME	X	X	X	X	ARGOS	Toulouse	Toulouse (LFPW)			35		AUSTRALIA
89813	CASEY (TRAVERSE GC41)	X	X	X	X	ARGOS	Toulouse	Toulouse (LFPW)	SMAA80 AMMC	Y	44	44	AUSTRALIA
89813									SMAA17 LFPW	N			
89828	UNIV. WI ID 8989 (DOME C II)	X	X	X	X	ARGOS	Wallops	Washington (KWBC)	SMAA14 KARS	N	51	49	THE U.S.A. (UNIVERSITY OF WISCONSIN)
89834	UNIV. WI ID 8916 (D-47)	X	X	X	X	ARGOS	Wallops	Washington (KWBC)	SMAA14 KARS	N	46	46	THE U.S.A. (UNIVERSITY OF WISCONSIN)
89864	UNIV. WI ID 8905 (MANUELA)	X	X	X	X	ARGOS	Wallops	Washington (KWBC)	SMAA14 KARS	N	51	50	THE U.S.A. (UNIVERSITY OF WISCONSIN)
89866	UNIV. WI ID 8906 (MARBLE POINT)	X	X	X	X	ARGOS	Wallops	Washington (KWBC)	SMAA14 KARS	N	52	51	THE U.S.A. (UNIVERSITY OF WISCONSIN)
89868	UNIV. WI ID 8913 (SCHWERDTFEGER)	X	X	X	X	ARGOS	Wallops	Washington (KWBC)	SMAA14 KARS	N	49	47	THE U.S.A. (UNIVERSITY OF WISCONSIN)

Station Index	Name	Programme of observation				Means used to transmit data to the collecting centre	Collecting centre	RTH	Abbreviated heading	In Volume C1	Number of SYNOP reports received in January 2005		Station operated by
		00	06	12	18						SAM	SMM	
89869	UNIV. WI ID 8931 (MARILYN)	X	X	X	X	ARGOS	Wallops	Washington (KWBC)		0		THE U.S.A. (UNIVERSITY OF WISCONSIN)	
89873	UNIV. WI ID 8915 (ELAINE)	X	X	X	X	ARGOS	Wallops	Washington (KWBC)		0		THE U.S.A. (UNIVERSITY OF WISCONSIN)	
89879	UNIV. WI ID 8984 (POSSESSION IS.)	X	X	X	X	ARGOS	Wallops	Washington (KWBC)		49		THE U.S.A. (UNIVERSITY OF WISCONSIN)	

RESULTS OF THE SPECIFIC MONITORING OF THE OPERATION OF THE WWW

Daily average (%) of SYNOP reports from Antarctic received at centres

Monitoring period: 1 to 15 January 2005

Collecting centre Station	Daily average (%) of SYNOP reports received at 3 hours after observation time															
	1 hour								12 hours							
Observing programme at (00, 06, 12 & 18 UTC)	NMC Montevideo	NMC Santiago	NMC Seoul	RTH Beijing	RTH Brasilia	RTH Buenos Aires	RTH Exeter	RTH Melbourne	RTH Moscow	RTH New Delhi	RTH Norrkoping	RTH Offenbach	RTH Rome	RTH Tokyo	RTH Washington	RTH Wellington
1. Stations transmitting their reports via ARGOS																
Landover (ARGOS)																
89108 (X, X, X, X)	<u>0</u> <u>0</u> 0	<u>0</u> <u>0</u> 0	<u>NM</u> <u>NM</u> NM	<u>0</u> <u>0</u> 0	<u>45</u> <u>77</u> 85	<u>40</u> <u>73</u> 82	<u>42</u> <u>77</u> 85	<u>45</u> <u>77</u> 85	<u>43</u> <u>78</u> 83	<u>30</u> <u>63</u> 73	<u>42</u> <u>73</u> 85	<u>45</u> <u>75</u> 85	<u>42</u> <u>77</u> 85	<u>42</u> <u>77</u> 85	++ ++ ++	<u>NM</u> <u>NM</u> NM
89208 (X, X, X, X)	<u>0</u> <u>0</u> 0	<u>0</u> <u>0</u> 0	<u>NM</u> <u>NM</u> NM	<u>0</u> <u>0</u> 0	<u>0</u> <u>0</u> 0	<u>0</u> <u>0</u> 0	<u>0</u> <u>0</u> 0	<u>0</u> <u>0</u> 0	<u>0</u> <u>0</u> 0	<u>0</u> <u>0</u> 0	<u>NM</u> <u>NM</u> NM	<u>0</u> <u>0</u> 0	<u>0</u> <u>0</u> 0	<u>0</u> <u>0</u> 0	<u>0</u> <u>0</u> 0	<u>NM</u> <u>NM</u> NM
89257 (X, X, X, X)	<u>0</u> <u>0</u> 0	<u>0</u> <u>0</u> 0	<u>NM</u> <u>NM</u> NM	<u>2</u> <u>5</u> 5	<u>2</u> <u>5</u> 5	<u>0</u> <u>3</u> 3	<u>30</u> <u>68</u> 75	<u>2</u> <u>5</u> 5	<u>2</u> <u>5</u> 5	<u>2</u> <u>3</u> 3	<u>2</u> <u>5</u> 5	<u>2</u> <u>5</u> 5	<u>2</u> <u>5</u> 5	<u>32</u> <u>87</u> 93	<u>2</u> <u>7</u> 7	<u>NM</u> <u>NM</u> NM
89261 (X, X, X, X)	<u>0</u> <u>0</u> 0	<u>0</u> <u>0</u> 0	<u>NM</u> <u>NM</u> NM	<u>0</u> <u>0</u> 0	<u>0</u> <u>0</u> 0	<u>0</u> <u>0</u> 0	<u>0</u> <u>0</u> 0	<u>0</u> <u>0</u> 0	<u>0</u> <u>0</u> 0	<u>0</u> <u>0</u> 0	<u>NM</u> <u>NM</u> NM	<u>0</u> <u>0</u> 0	<u>0</u> <u>0</u> 0	<u>0</u> <u>0</u> 0	<u>0</u> <u>0</u> 0	<u>NM</u> <u>NM</u> NM
89262 (X, X, X, X)	<u>0</u> <u>0</u> 0	<u>0</u> <u>0</u> 0	<u>NM</u> <u>NM</u> NM	<u>0</u> <u>0</u> 0	<u>0</u> <u>0</u> 0	<u>0</u> <u>0</u> 0	<u>0</u> <u>0</u> 0	<u>0</u> <u>0</u> 0	<u>0</u> <u>0</u> 0	<u>0</u> <u>0</u> 0	<u>NM</u> <u>NM</u> NM	<u>0</u> <u>0</u> 0	<u>0</u> <u>0</u> 0	<u>0</u> <u>0</u> 0	<u>13</u> <u>58</u> 75	<u>NM</u> <u>NM</u> NM
89264 (X, X, X, X)	<u>0</u> <u>0</u> 0	<u>0</u> <u>0</u> 0	<u>NM</u> <u>NM</u> NM	<u>0</u> <u>0</u> 0	<u>0</u> <u>0</u> 0	<u>0</u> <u>0</u> 0	<u>0</u> <u>0</u> 0	<u>0</u> <u>0</u> 0	<u>0</u> <u>0</u> 0	<u>0</u> <u>0</u> 0	<u>NM</u> <u>NM</u> NM	<u>0</u> <u>0</u> 0	<u>0</u> <u>0</u> 0	<u>0</u> <u>0</u> 0	<u>0</u> <u>0</u> 0	<u>NM</u> <u>NM</u> NM
89266 (X, X, X, X)	<u>0</u> <u>0</u> 0	<u>0</u> <u>0</u> 0	<u>NM</u> <u>NM</u> NM	<u>43</u> <u>68</u> 77	<u>48</u> <u>70</u> 77	<u>45</u> <u>67</u> 73	<u>45</u> <u>70</u> 77	<u>48</u> <u>70</u> 77	<u>47</u> <u>72</u> 77	<u>32</u> <u>50</u> 60	<u>45</u> <u>67</u> 77	<u>48</u> <u>68</u> 77	<u>45</u> <u>70</u> 77	<u>45</u> <u>70</u> 77	++ ++ ++	<u>NM</u> <u>NM</u> NM
89272 (X, X, X, X)	<u>0</u> <u>0</u> 0	<u>0</u> <u>0</u> 0	<u>NM</u> <u>NM</u> NM	<u>42</u> <u>72</u> 83	<u>47</u> <u>73</u> 83	<u>42</u> <u>70</u> 80	<u>43</u> <u>73</u> 83	<u>47</u> <u>73</u> 83	<u>45</u> <u>75</u> 83	<u>33</u> <u>58</u> 70	<u>43</u> <u>72</u> 83	<u>47</u> <u>72</u> 83	<u>43</u> <u>73</u> 83	<u>43</u> <u>73</u> 83	++ ++ ++	<u>NM</u> <u>NM</u> NM
89314 (X, X, X, X)	<u>0</u> <u>0</u> 0	<u>0</u> <u>0</u> 0	<u>NM</u> <u>NM</u> NM	<u>43</u> <u>73</u> 83	<u>47</u> <u>75</u> 83	<u>43</u> <u>72</u> 80	<u>45</u> <u>75</u> 83	<u>47</u> <u>75</u> 83	<u>45</u> <u>77</u> 82	<u>33</u> <u>60</u> 70	<u>45</u> <u>73</u> 83	<u>47</u> <u>73</u> 83	<u>45</u> <u>75</u> 83	<u>45</u> <u>75</u> 83	++ ++ ++	<u>NM</u> <u>NM</u> NM
89324 (X, X, X, X)	<u>0</u> <u>0</u> 0	<u>0</u> <u>0</u> 0	<u>NM</u> <u>NM</u> NM	<u>0</u> <u>0</u> 0	<u>0</u> <u>0</u> 0	<u>0</u> <u>0</u> 0	<u>0</u> <u>0</u> 0	<u>0</u> <u>0</u> 0	<u>0</u> <u>0</u> 0	<u>0</u> <u>0</u> 0	<u>NM</u> <u>NM</u> NM	<u>0</u> <u>0</u> 0	<u>0</u> <u>0</u> 0	<u>0</u> <u>0</u> 0	<u>0</u> <u>0</u> 0	<u>NM</u> <u>NM</u> NM

NM Reply received, but not including the appropriate monitoring results.

++ Number of reports exceed the maximum number of reports expected to be received.

At least one of the stations was not monitored or/and number of reports exceed the maximum number of reports expected to be received.

RESULTS OF THE SPECIFIC MONITORING OF THE OPERATION OF THE WWW

Daily average (%) of SYNOP reports from Antarctic received at centres

Monitoring period: 1 to 15 January 2005

Collecting centre Station	Daily average (%) of SYNOP reports received at 3 hours after observation time															
	1 hour 12 hours															
Observing programme at (00, 06, 12 & 18 UTC)	NMC Montevideo	NMC Santiago	NMC Seoul	RTH Beijing	RTH Brasilia	RTH Buenos Aires	RTH Exeter	RTH Melbourne	RTH Moscow	RTH New Delhi	RTH Norrkoping	RTH Offenbach	RTH Rome	RTH Tokyo	RTH Washington	RTH Wellington
1. Stations transmitting their reports via ARGOS																
Landover (ARGOS)																
89327 (X, X, X, X)	<u>0</u> <u>0</u> 0	<u>0</u> <u>0</u> 0	<u>NM</u> <u>NM</u> NM	<u>30</u> <u>57</u> 70	<u>33</u> <u>57</u> 70	<u>32</u> <u>53</u> 67	<u>32</u> <u>57</u> 70	<u>33</u> <u>57</u> 70	<u>33</u> <u>58</u> 70	<u>25</u> <u>48</u> 65	<u>32</u> <u>50</u> 70	<u>33</u> <u>57</u> 70	<u>32</u> <u>57</u> 70	<u>32</u> <u>57</u> 70	++ ++ ++	<u>NM</u> <u>NM</u> NM
89332 (X, X, X, X)	<u>0</u> <u>0</u> 0	<u>0</u> <u>0</u> 0	<u>NM</u> <u>NM</u> NM	<u>42</u> <u>73</u> 83	<u>47</u> <u>75</u> 83	<u>42</u> <u>72</u> 80	<u>43</u> <u>75</u> 83	<u>47</u> <u>75</u> 83	<u>45</u> <u>77</u> 82	<u>35</u> <u>63</u> 73	<u>43</u> <u>73</u> 83	<u>47</u> <u>73</u> 83	<u>43</u> <u>75</u> 83	<u>43</u> <u>75</u> 83	++ ++ ++	<u>NM</u> <u>NM</u> NM
89345 (X, X, X, X)	<u>0</u> <u>0</u> 0	<u>0</u> <u>0</u> 0	<u>NM</u> <u>NM</u> NM	<u>2</u> <u>5</u> 5	<u>2</u> <u>5</u> 5	<u>0</u> <u>3</u> 3	<u>18</u> <u>50</u> 60	<u>2</u> <u>5</u> 5	<u>2</u> <u>5</u> 5	<u>2</u> <u>3</u> 3	<u>2</u> <u>5</u> 5	<u>2</u> <u>5</u> 5	<u>2</u> <u>5</u> 5	<u>23</u> <u>78</u> 87	<u>2</u> <u>5</u> 5	<u>NM</u> <u>NM</u> NM
89376 (X, X, X, X)	<u>0</u> <u>0</u> 0	<u>0</u> <u>0</u> 0	<u>NM</u> <u>NM</u> NM	<u>32</u> <u>75</u> 85	<u>37</u> <u>77</u> 85	<u>32</u> <u>73</u> 82	<u>33</u> <u>77</u> 85	<u>37</u> <u>77</u> 85	<u>35</u> <u>78</u> 83	<u>28</u> <u>65</u> 75	<u>33</u> <u>73</u> 85	<u>37</u> <u>75</u> 85	<u>33</u> <u>77</u> 85	<u>33</u> <u>77</u> 85	++ ++ ++	<u>NM</u> <u>NM</u> NM
89377 (X, X, X, X)	<u>0</u> <u>0</u> 0	<u>0</u> <u>0</u> 0	<u>NM</u> <u>NM</u> NM	<u>38</u> <u>72</u> 82	<u>43</u> <u>73</u> 82	<u>40</u> <u>72</u> 80	<u>40</u> <u>73</u> 82	<u>43</u> <u>73</u> 82	<u>42</u> <u>75</u> 80	<u>32</u> <u>60</u> 70	<u>40</u> <u>70</u> 82	<u>43</u> <u>72</u> 82	<u>40</u> <u>73</u> 82	<u>40</u> <u>73</u> 82	++ ++ ++	<u>NM</u> <u>NM</u> NM
89667 (X, X, X, X)	<u>0</u> <u>0</u> 0	<u>0</u> <u>0</u> 0	<u>NM</u> <u>NM</u> NM	<u>0</u> <u>0</u> 0	<u>0</u> <u>0</u> 0	<u>0</u> <u>0</u> 0	<u>0</u> <u>0</u> 0	<u>0</u> <u>0</u> 0	<u>0</u> <u>0</u> 0	<u>0</u> <u>0</u> 0	<u>NM</u> <u>NM</u> NM	<u>0</u> <u>0</u> 0	<u>0</u> <u>0</u> 0	<u>0</u> <u>0</u> 0	<u>0</u> <u>0</u> 0	<u>NM</u> <u>NM</u> NM
89744 (X, X, X, X)	<u>0</u> <u>0</u> 0	<u>0</u> <u>0</u> 0	<u>NM</u> <u>NM</u> NM	<u>32</u> <u>72</u> 78	<u>35</u> <u>73</u> 78	<u>30</u> <u>70</u> 75	<u>32</u> <u>73</u> 78	<u>35</u> <u>73</u> 78	<u>32</u> <u>75</u> 77	<u>20</u> <u>58</u> 67	<u>32</u> <u>68</u> 78	<u>35</u> <u>72</u> 78	<u>32</u> <u>73</u> 78	<u>32</u> <u>73</u> 78	++ ++ ++	<u>NM</u> <u>NM</u> NM
89799 (X, X, X, X)	<u>0</u> <u>0</u> 0	<u>0</u> <u>0</u> 0	<u>NM</u> <u>NM</u> NM	<u>40</u> <u>75</u> 85	<u>45</u> <u>77</u> 85	<u>40</u> <u>73</u> 82	<u>42</u> <u>77</u> 85	<u>45</u> <u>77</u> 85	<u>43</u> <u>78</u> 83	<u>32</u> <u>62</u> 72	<u>42</u> <u>72</u> 85	<u>45</u> <u>75</u> 85	<u>42</u> <u>77</u> 85	<u>42</u> <u>77</u> 85	<u>47</u> <u>77</u> 85	<u>NM</u> <u>NM</u> NM
89828 (X, X, X, X)	<u>0</u> <u>0</u> 0	<u>0</u> <u>0</u> 0	<u>NM</u> <u>NM</u> NM	<u>33</u> <u>70</u> 85	<u>33</u> <u>73</u> 85	<u>32</u> <u>70</u> 82	<u>33</u> <u>73</u> 85	<u>33</u> <u>73</u> 85	<u>33</u> <u>75</u> 83	<u>20</u> <u>60</u> 73	<u>33</u> <u>72</u> 85	<u>33</u> <u>72</u> 85	<u>33</u> <u>73</u> 85	<u>33</u> <u>73</u> 85	++ ++ ++	<u>NM</u> <u>NM</u> NM
89834 (X, X, X, X)	<u>0</u> <u>0</u> 0	<u>0</u> <u>0</u> 0	<u>NM</u> <u>NM</u> NM	<u>38</u> <u>65</u> 77	<u>40</u> <u>67</u> 77	<u>37</u> <u>63</u> 73	<u>40</u> <u>67</u> 77	<u>40</u> <u>67</u> 77	<u>40</u> <u>67</u> 75	<u>30</u> <u>57</u> 67	<u>40</u> <u>65</u> 77	<u>40</u> <u>67</u> 77	<u>40</u> <u>67</u> 77	<u>40</u> <u>65</u> 75	++ ++ ++	<u>NM</u> <u>NM</u> NM

NM Reply received, but not including the appropriate monitoring results.

++ Number of reports exceed the maximum number of reports expected to be received.

At least one of the stations was not monitored or/and number of reports exceed the maximum number of reports expected to be received.

RESULTS OF THE SPECIFIC MONITORING OF THE OPERATION OF THE WWW

Daily average (%) of SYNOP reports from Antarctic received at centres

Monitoring period: 1 to 15 January 2005

Collecting centre Station	Daily average (%) of SYNOP reports received at 3 hours after observation time															
	1 hour								12 hours							
Observing programme at (00, 06, 12 & 18 UTC)	NMC Montevideo	NMC Santiago	NMC Seoul	RTH Beijing	RTH Brasilia	RTH Buenos Aires	RTH Exeter	RTH Melbourne	RTH Moscow	RTH New Delhi	RTH Norrkoping	RTH Offenbach	RTH Rome	RTH Tokyo	RTH Washington	RTH Wellington
1. Stations transmitting their reports via ARGOS																
Landover (ARGOS)																
89864 (X, X, X, X)	<u>0</u> <u>0</u> 0	<u>0</u> <u>0</u> 0	<u>NM</u> <u>NM</u> NM	<u>37</u> <u>75</u> 85	<u>38</u> <u>77</u> 85	<u>37</u> <u>73</u> 82	<u>38</u> <u>77</u> 85	<u>38</u> <u>77</u> 85	<u>38</u> <u>77</u> 83	<u>32</u> <u>67</u> 77	<u>38</u> <u>72</u> 85	<u>38</u> <u>75</u> 85	<u>38</u> <u>77</u> 85	<u>38</u> <u>77</u> 85	++	<u>NM</u> <u>NM</u> NM
89866 (X, X, X, X)	<u>0</u> <u>0</u> 0	<u>0</u> <u>0</u> 0	<u>NM</u> <u>NM</u> NM	<u>32</u> <u>70</u> 87	<u>37</u> <u>73</u> 87	<u>32</u> <u>70</u> 83	<u>35</u> <u>73</u> 87	<u>37</u> <u>73</u> 87	<u>37</u> <u>75</u> 85	<u>27</u> <u>63</u> 77	<u>33</u> <u>72</u> 87	<u>37</u> <u>72</u> 87	<u>35</u> <u>73</u> 87	<u>35</u> <u>73</u> 87	++	<u>NM</u> <u>NM</u> NM
89868 (X, X, X, X)	<u>0</u> <u>0</u> 0	<u>0</u> <u>0</u> 0	<u>NM</u> <u>NM</u> NM	<u>37</u> <u>73</u> 82	<u>42</u> <u>73</u> 82	<u>37</u> <u>70</u> 78	<u>38</u> <u>73</u> 82	<u>42</u> <u>73</u> 82	<u>40</u> <u>75</u> 80	<u>32</u> <u>63</u> 72	<u>38</u> <u>72</u> 82	<u>42</u> <u>73</u> 82	<u>38</u> <u>73</u> 82	<u>40</u> <u>73</u> 82	++	<u>NM</u> <u>NM</u> NM
89869 (X, X, X, X)	<u>0</u> <u>0</u> 0	<u>0</u> <u>0</u> 0	<u>NM</u> <u>NM</u> NM	<u>0</u> <u>0</u> 0	<u>0</u> <u>0</u> 0	<u>0</u> <u>0</u> 0	<u>0</u> <u>0</u> 0	<u>0</u> <u>0</u> 0	<u>0</u> <u>0</u> 0	<u>0</u> <u>0</u> 0	<u>NM</u> <u>NM</u> NM	<u>0</u> <u>0</u> 0	<u>0</u> <u>0</u> 0	<u>0</u> <u>0</u> 0	<u>0</u> <u>0</u> 0	<u>NM</u> <u>NM</u> NM
89873 (X, X, X, X)	<u>0</u> <u>0</u> 0	<u>0</u> <u>0</u> 0	<u>NM</u> <u>NM</u> NM	<u>0</u> <u>0</u> 0	<u>0</u> <u>0</u> 0	<u>0</u> <u>0</u> 0	<u>0</u> <u>0</u> 0	<u>0</u> <u>0</u> 0	<u>0</u> <u>0</u> 0	<u>0</u> <u>0</u> 0	<u>NM</u> <u>NM</u> NM	<u>0</u> <u>0</u> 0	<u>0</u> <u>0</u> 0	<u>0</u> <u>0</u> 0	<u>0</u> <u>0</u> 0	<u>NM</u> <u>NM</u> NM
89879 (X, X, X, X)	<u>0</u> <u>0</u> 0	<u>0</u> <u>0</u> 0	<u>NM</u> <u>NM</u> NM	<u>27</u> <u>67</u> 82	<u>30</u> <u>68</u> 82	<u>27</u> <u>65</u> 78	<u>28</u> <u>68</u> 82	<u>30</u> <u>68</u> 82	<u>30</u> <u>70</u> 82	<u>20</u> <u>55</u> 68	<u>28</u> <u>63</u> 82	<u>30</u> <u>67</u> 82	<u>NM</u> <u>NM</u> NM	<u>27</u> <u>67</u> 80	++	<u>NM</u> <u>NM</u> NM
Total Landover (ARGOS): (26, 26, 26, 26)	<u>0</u> <u>0</u> 0	<u>0</u> <u>0</u> 0	<u>0#</u> <u>0#</u> 0#	<u>21</u> <u>41</u> 47	<u>25</u> <u>45</u> 51	<u>23</u> <u>43</u> 49	<u>25</u> <u>49</u> 56	<u>25</u> <u>45</u> 51	<u>24</u> <u>46</u> 50	<u>18</u> <u>37</u> 44	<u>24#</u> <u>43#</u> 51#	<u>25</u> <u>44</u> 51	<u>23#</u> <u>42#</u> 48#	<u>26</u> <u>51</u> 57	<u>2#</u> <u>6#</u> 7#	<u>NM</u> <u>NM</u> NM
Toulouse (ARGOS)																
89004 (X, X, X, X)	<u>0</u> <u>0</u> 0	<u>92</u> <u>92</u> 92	<u>NM</u> <u>NM</u> NM	<u>77</u> <u>77</u> 78	<u>85</u> <u>85</u> 85	<u>78</u> <u>78</u> 78	<u>83</u> <u>83</u> 83	<u>85</u> <u>85</u> 85	<u>83</u> <u>83</u> 83	<u>75</u> <u>77</u> 77	<u>NM</u> <u>NM</u> NM	<u>0</u> <u>0</u> 0	<u>0</u> <u>0</u> 0	<u>85</u> <u>85</u> 85	++	<u>NM</u> <u>NM</u> NM
89014 (X, X, X, X)	<u>0</u> <u>0</u> 0	<u>0</u> <u>0</u> 0	<u>NM</u> <u>NM</u> NM	<u>0</u> <u>0</u> 0	<u>0</u> <u>0</u> 0	<u>0</u> <u>0</u> 0	<u>8</u> <u>8</u> 8	<u>8</u> <u>8</u> 8	<u>0</u> <u>0</u> 0	<u>8</u> <u>8</u> 8	<u>NM</u> <u>NM</u> NM	<u>8</u> <u>8</u> 8	<u>0</u> <u>0</u> 0	<u>0</u> <u>0</u> 0	<u>0</u> <u>0</u> 0	<u>NM</u> <u>NM</u> NM

NM Reply received, but not including the appropriate monitoring results.

++ Number of reports exceed the maximum number of reports expected to be received.

At least one of the stations was not monitored or/and number of reports exceed the maximum number of reports expected to be received.

RESULTS OF THE SPECIFIC MONITORING OF THE OPERATION OF THE WWW

Daily average (%) of SYNOP reports from Antarctic received at centres

Monitoring period: 1 to 15 January 2005

Collecting centre Station	Daily average (%) of SYNOP reports received at 3 hours after observation time															
	1 hour								12 hours							
Observing programme at (00, 06, 12 & 18 UTC)	NMC Montevideo	NMC Santiago	NMC Seoul	RTH Beijing	RTH Brasilia	RTH Buenos Aires	RTH Exeter	RTH Melbourne	RTH Moscow	RTH New Delhi	RTH Norrkoping	RTH Offenbach	RTH Rome	RTH Tokyo	RTH Washington	RTH Wellington
1. Stations transmitting their reports via ARGOS																
Toulouse (ARGOS)																
89568 (X, X, X, X)	<u>0</u> <u>0</u> 0	<u>0</u> <u>0</u> 0	<u>NM</u> <u>NM</u> NM	<u>72</u> <u>85</u> 88	<u>73</u> <u>87</u> 88	<u>68</u> <u>82</u> 83	<u>73</u> <u>85</u> 87	<u>75</u> <u>87</u> 88	<u>75</u> <u>87</u> 88	<u>53</u> <u>70</u> 72	<u>75</u> <u>87</u> 88	<u>77</u> <u>87</u> 88	<u>0</u> <u>0</u> 0	<u>73</u> <u>85</u> 87	++ ++ ++	<u>NM</u> <u>NM</u> NM
89612 (X, X, X, X)	<u>0</u> <u>0</u> 0	<u>0</u> <u>0</u> 0	<u>NM</u> <u>NM</u> NM	<u>33</u> <u>70</u> 73	<u>40</u> <u>72</u> 73	<u>38</u> <u>67</u> 68	<u>40</u> <u>70</u> 73	<u>40</u> <u>72</u> 73	<u>40</u> <u>72</u> 73	<u>28</u> <u>60</u> 62	<u>40</u> <u>65</u> 73	<u>40</u> <u>72</u> 73	<u>0</u> <u>0</u> 0	<u>40</u> <u>72</u> 73	++ ++ ++	<u>NM</u> <u>NM</u> NM
89757 (X, X, X, X)	<u>0</u> <u>0</u> 0	<u>0</u> <u>0</u> 0	<u>NM</u> <u>NM</u> NM	<u>0</u> <u>0</u> 0	<u>0</u> <u>0</u> 0	<u>0</u> <u>0</u> 0	<u>0</u> <u>0</u> 0	<u>0</u> <u>0</u> 0	<u>0</u> <u>0</u> 0	<u>0</u> <u>0</u> 0	<u>NM</u> <u>NM</u> NM	<u>0</u> <u>0</u> 0	<u>0</u> <u>0</u> 0	<u>0</u> <u>0</u> 0	<u>0</u> <u>0</u> 0	<u>NM</u> <u>NM</u> NM
89758 (X, X, X, X)	<u>0</u> <u>0</u> 0	<u>0</u> <u>0</u> 0	<u>NM</u> <u>NM</u> NM	<u>38</u> <u>63</u> 65	<u>42</u> <u>65</u> 65	<u>37</u> <u>62</u> 62	<u>42</u> <u>65</u> 65	<u>42</u> <u>65</u> 65	<u>42</u> <u>65</u> 65	<u>32</u> <u>55</u> 55	<u>42</u> <u>63</u> 65	<u>43</u> <u>65</u> 65	<u>0</u> <u>0</u> 0	<u>40</u> <u>63</u> 63	++ ++ ++	<u>NM</u> <u>NM</u> NM
89762 (X, X, X, X)	<u>0</u> <u>0</u> 0	<u>0</u> <u>0</u> 0	<u>NM</u> <u>NM</u> NM	<u>0</u> <u>0</u> 0	<u>0</u> <u>0</u> 0	<u>0</u> <u>0</u> 0	<u>0</u> <u>0</u> 0	<u>0</u> <u>0</u> 0	<u>0</u> <u>0</u> 0	<u>0</u> <u>0</u> 0	<u>NM</u> <u>NM</u> NM	<u>0</u> <u>0</u> 0	<u>0</u> <u>0</u> 0	<u>0</u> <u>0</u> 0	<u>32</u> <u>65</u> 70	<u>NM</u> <u>NM</u> NM
89767 (X, X, X, X)	<u>0</u> <u>0</u> 0	<u>0</u> <u>0</u> 0	<u>NM</u> <u>NM</u> NM	<u>30</u> <u>97</u> 100	<u>35</u> <u>97</u> 98	<u>33</u> <u>92</u> 93	<u>35</u> <u>97</u> 100	<u>35</u> <u>98</u> 100	<u>35</u> <u>98</u> 100	<u>18</u> <u>85</u> 87	<u>35</u> <u>82</u> 100	<u>35</u> <u>98</u> 100	<u>0</u> <u>0</u> 0	<u>35</u> <u>98</u> 100	++ ++ ++	<u>NM</u> <u>NM</u> NM
89774 (X, X, X, X)	<u>0</u> <u>0</u> 0	<u>0</u> <u>0</u> 0	<u>NM</u> <u>NM</u> NM	<u>0</u> <u>0</u> 0	<u>0</u> <u>0</u> 0	<u>0</u> <u>0</u> 0	<u>0</u> <u>0</u> 0	<u>0</u> <u>0</u> 0	<u>0</u> <u>0</u> 0	<u>0</u> <u>0</u> 0	<u>NM</u> <u>NM</u> NM	<u>0</u> <u>0</u> 0	<u>0</u> <u>0</u> 0	<u>0</u> <u>0</u> 0	<u>0</u> <u>0</u> 0	<u>NM</u> <u>NM</u> NM
89803 (X, X, X, X)	<u>0</u> <u>0</u> 0	<u>0</u> <u>0</u> 0	<u>NM</u> <u>NM</u> NM	<u>33</u> <u>75</u> 83	<u>38</u> <u>77</u> 83	<u>37</u> <u>72</u> 78	<u>38</u> <u>77</u> 83	<u>38</u> <u>77</u> 83	<u>38</u> <u>78</u> 83	<u>25</u> <u>60</u> 65	<u>38</u> <u>72</u> 83	<u>38</u> <u>77</u> 83	<u>0</u> <u>0</u> 0	<u>38</u> <u>77</u> 83	++ ++ ++	<u>NM</u> <u>NM</u> NM
89811 (X, X, X, X)	<u>0</u> <u>0</u> 0	<u>0</u> <u>0</u> 0	<u>NM</u> <u>NM</u> NM	<u>43</u> <u>80</u> 83	<u>53</u> <u>82</u> 83	<u>48</u> <u>77</u> 78	<u>52</u> <u>82</u> 83	<u>55</u> <u>82</u> 83	<u>55</u> <u>82</u> 83	<u>38</u> <u>72</u> 73	<u>53</u> <u>77</u> 83	<u>55</u> <u>82</u> 83	<u>0</u> <u>0</u> 0	<u>52</u> <u>82</u> 83	++ ++ ++	<u>NM</u> <u>NM</u> NM
89812 (X, X, X, X)	<u>0</u> <u>0</u> 0	<u>0</u> <u>0</u> 0	<u>NM</u> <u>NM</u> NM	<u>20</u> <u>55</u> 58	<u>25</u> <u>57</u> 58	<u>25</u> <u>53</u> 55	<u>25</u> <u>55</u> 58	<u>25</u> <u>57</u> 58	<u>25</u> <u>57</u> 58	<u>18</u> <u>50</u> 52	<u>25</u> <u>53</u> 58	<u>25</u> <u>57</u> 58	<u>0</u> <u>0</u> 0	<u>25</u> <u>57</u> 58	++ ++ ++	<u>NM</u> <u>NM</u> NM

NM Reply received, but not including the appropriate monitoring results.

++ Number of reports exceed the maximum number of reports expected to be received.

At least one of the stations was not monitored or/and number of reports exceed the maximum number of reports expected to be received.

RESULTS OF THE SPECIFIC MONITORING OF THE OPERATION OF THE WWW

Daily average (%) of SYNOP reports from Antarctic received at centres

Monitoring period: 1 to 15 January 2005

Collecting centre Station	Daily average (%) of SYNOP reports received at 3 hours after observation time															
	1 hour 12 hours															
Observing programme at (00, 06, 12 & 18 UTC)	NMC Montevideo	NMC Santiago	NMC Seoul	RTH Beijing	RTH Brasilia	RTH Buenos Aires	RTH Exeter	RTH Melbourne	RTH Moscow	RTH New Delhi	RTH Norrkoping	RTH Offenbach	RTH Rome	RTH Tokyo	RTH Washington	RTH Wellington
1. Stations transmitting their reports via ARGOS																
Toulouse (ARGOS)																
89813	<u>0</u>	<u>0</u>	NM	<u>45</u>	<u>47</u>	<u>45</u>	<u>48</u>	<u>48</u>	<u>48</u>	<u>32</u>	<u>48</u>	<u>50</u>	<u>0</u>	<u>47</u>	++	NM
(X, X, X, X)	<u>0</u>	<u>0</u>	NM	<u>63</u>	<u>65</u>	<u>60</u>	<u>65</u>	<u>65</u>	<u>67</u>	<u>53</u>	<u>65</u>	<u>65</u>	<u>0</u>	<u>63</u>	++	NM
	0	0	NM	73	73	68	73	73	73	60	73	73	0	72	++	NM
Total Toulouse (ARGOS): (13, 13, 13, 13)	<u>0</u>	<u>7</u>	<u>0#</u>	<u>30</u>	<u>34</u>	<u>32</u>	<u>34</u>	<u>35</u>	<u>34</u>	<u>25</u>	<u>27#</u>	<u>29</u>	<u>0</u>	<u>33</u>	<u>2#</u>	<u>NM</u>
	<u>0</u>	<u>7</u>	<u>0#</u>	<u>51</u>	<u>53</u>	<u>49</u>	<u>53</u>	<u>53</u>	<u>53</u>	<u>45</u>	<u>43#</u>	<u>47</u>	<u>0</u>	<u>52</u>	<u>5#</u>	<u>NM</u>
	0	7	0#	54	54	51	55	55	54	47	48#	49	0	54	5#	NM
2. Stations transmitting their reports to an Antarctic collecting centre																
Davis																
89571	<u>0</u>	<u>93</u>	NM	<u>98</u>	<u>97</u>	<u>90</u>	<u>98</u>	<u>98</u>	<u>98</u>	<u>82</u>	<u>98</u>	<u>98</u>	<u>100</u>	<u>98</u>	++	NM
(X, X, X, X)	<u>0</u>	<u>93</u>	NM	<u>100</u>	<u>98</u>	<u>92</u>	<u>100</u>	<u>100</u>	<u>100</u>	<u>83</u>	<u>100</u>	<u>100</u>	<u>100</u>	<u>100</u>	++	NM
	0	93	NM	100	98	92	100	100	100	83	100	100	100	100	++	NM
89573	<u>0</u>	<u>47</u>	NM	<u>43</u>	<u>43</u>	<u>42</u>	<u>67</u>	<u>43</u>	<u>43</u>	<u>37</u>	<u>43</u>	<u>43</u>	<u>100</u>	<u>43</u>	++	NM
(X, X, X, X)	<u>0</u>	<u>93</u>	NM	<u>43</u>	<u>43</u>	<u>42</u>	<u>67</u>	<u>43</u>	<u>43</u>	<u>37</u>	<u>43</u>	<u>43</u>	<u>100</u>	<u>43</u>	++	NM
	0	93	NM	68	68	65	92	68	68	38	45	68	100	68	++	NM
Total Davis:	<u>0</u>	<u>70</u>	<u>0#</u>	<u>71</u>	<u>70</u>	<u>66</u>	<u>83</u>	<u>71</u>	<u>71</u>	<u>59</u>	<u>71</u>	<u>71</u>	<u>100</u>	<u>71</u>	<u>0#</u>	<u>NM</u>
(2, 2, 2, 2)	<u>0</u>	<u>93</u>	<u>0#</u>	<u>72</u>	<u>71</u>	<u>67</u>	<u>83</u>	<u>72</u>	<u>72</u>	<u>60</u>	<u>72</u>	<u>72</u>	<u>100</u>	<u>72</u>	<u>0#</u>	<u>NM</u>
	0	93	0#	84	83	78	96	84	84	61	73	84	100	84	0#	NM
Frei																
89054	<u>100</u>	<u>100</u>	NM	<u>97</u>	<u>97</u>	<u>97</u>	<u>98</u>	<u>98</u>	<u>97</u>	<u>53</u>	<u>98</u>	<u>98</u>	<u>100</u>	<u>90</u>	++	NM
(X, X, X, X)	<u>100</u>	<u>100</u>	NM	<u>97</u>	<u>97</u>	<u>97</u>	<u>98</u>	<u>98</u>	<u>97</u>	<u>53</u>	<u>98</u>	<u>98</u>	<u>100</u>	<u>90</u>	++	NM
	100	100	NM	98	98	98	100	100	98	53	100	100	100	92	++	NM
89056	<u>0</u>	<u>100</u>	NM	<u>98</u>	<u>98</u>	<u>98</u>	<u>100</u>	<u>100</u>	<u>98</u>	<u>50</u>	<u>100</u>	<u>100</u>	<u>100</u>	<u>83</u>	++	NM
(X, X, X, X)	<u>0</u>	<u>100</u>	NM	<u>98</u>	<u>98</u>	<u>98</u>	<u>100</u>	<u>100</u>	<u>98</u>	<u>50</u>	<u>100</u>	<u>100</u>	<u>100</u>	<u>83</u>	++	NM
	0	100	NM	98	98	98	100	100	98	50	100	100	100	83	++	NM
89058	<u>7</u>	<u>98</u>	NM	<u>97</u>	<u>97</u>	<u>95</u>	<u>98</u>	<u>98</u>	<u>95</u>	<u>48</u>	<u>97</u>	<u>98</u>	<u>100</u>	<u>83</u>	++	NM
(X, X, X, X)	<u>7</u>	<u>98</u>	NM	<u>97</u>	<u>97</u>	<u>95</u>	<u>98</u>	<u>98</u>	<u>95</u>	<u>48</u>	<u>97</u>	<u>98</u>	<u>100</u>	<u>83</u>	++	NM
	7	98	NM	97	97	95	98	98	95	48	97	98	100	83	++	NM

NM Reply received, but not including the appropriate monitoring results.

++ Number of reports exceed the maximum number of reports expected to be received.

At least one of the stations was not monitored or/and number of reports exceed the maximum number of reports expected to be received.

RESULTS OF THE SPECIFIC MONITORING OF THE OPERATION OF THE WWW

Daily average (%) of SYNOP reports from Antarctic received at centres

Monitoring period: 1 to 15 January 2005

Collecting centre Station	Daily average (%) of SYNOP reports received at 3 hours after observation time															
	1 hour								12 hours							
Observing programme at (00, 06, 12 & 18 UTC)	NMC Montevideo	NMC Santiago	NMC Seoul	RTH Beijing	RTH Brasilia	RTH Buenos Aires	RTH Exeter	RTH Melbourne	RTH Moscow	RTH New Delhi	RTH Norrkoping	RTH Offenbach	RTH Rome	RTH Tokyo	RTH Washington	RTH Wellington
2. Stations transmitting their reports to an Antarctic collecting centre																
Frei																
89059	<u>5</u>	<u>100</u>	<u>NM</u>	<u>98</u>	<u>98</u>	<u>98</u>	<u>100</u>	<u>100</u>	<u>98</u>	<u>50</u>	<u>98</u>	<u>100</u>	<u>98</u>	<u>85</u>	<u>++</u>	<u>NM</u>
(X, X, X, X)	<u>5</u>	<u>100</u>	<u>NM</u>	<u>98</u>	<u>98</u>	<u>98</u>	<u>100</u>	<u>100</u>	<u>98</u>	<u>50</u>	<u>98</u>	<u>100</u>	<u>98</u>	<u>85</u>	<u>++</u>	<u>NM</u>
	5	100	NM	98	98	98	100	100	98	50	98	100	98	85	++	NM
89251	<u>8</u>	<u>100</u>	<u>100</u>	<u>98</u>	<u>98</u>	<u>98</u>	<u>100</u>	<u>100</u>	<u>98</u>	<u>52</u>	<u>100</u>	<u>100</u>	<u>100</u>	<u>85</u>	<u>++</u>	<u>NM</u>
(X, X, X, X)	<u>8</u>	<u>100</u>	<u>100</u>	<u>98</u>	<u>98</u>	<u>98</u>	<u>100</u>	<u>100</u>	<u>98</u>	<u>52</u>	<u>100</u>	<u>100</u>	<u>100</u>	<u>85</u>	<u>++</u>	<u>NM</u>
	8	100	100	98	98	98	100	100	98	52	100	100	100	85	++	NM
Total Frei:	<u>24</u>	<u>100</u>	<u>20#</u>	<u>98</u>	<u>98</u>	<u>97</u>	<u>99</u>	<u>99</u>	<u>97</u>	<u>51</u>	<u>99</u>	<u>99</u>	<u>100</u>	<u>85</u>	<u>0#</u>	<u>NM</u>
(5, 5, 5, 5)	<u>24</u>	<u>100</u>	<u>20#</u>	<u>98</u>	<u>98</u>	<u>97</u>	<u>99</u>	<u>99</u>	<u>97</u>	<u>51</u>	<u>99</u>	<u>99</u>	<u>100</u>	<u>85</u>	<u>0#</u>	<u>NM</u>
	24	100	20#	98	98	98	100	100	98	51	99	100	100	86	0#	NM
Hobart																
89564	<u>0</u>	<u>93</u>	<u>NM</u>	<u>100</u>	<u>98</u>	<u>92</u>	<u>100</u>	<u>100</u>	<u>100</u>	<u>83</u>	<u>100</u>	<u>100</u>	<u>100</u>	<u>100</u>	<u>++</u>	<u>NM</u>
(X, X, X, X)	<u>0</u>	<u>93</u>	<u>NM</u>	<u>100</u>	<u>98</u>	<u>92</u>	<u>100</u>	<u>100</u>	<u>100</u>	<u>83</u>	<u>100</u>	<u>100</u>	<u>100</u>	<u>100</u>	<u>++</u>	<u>NM</u>
	0	93	NM	100	98	92	100	100	100	83	100	100	100	100	++	NM
89576	<u>0</u>	<u>0</u>	<u>NM</u>	<u>33</u>	<u>37</u>	<u>37</u>	<u>37</u>	<u>37</u>	<u>37</u>	<u>20</u>	<u>37</u>	<u>37</u>	<u>0</u>	<u>37</u>	<u>++</u>	<u>NM</u>
(X, X, X, X)	<u>0</u>	<u>0</u>	<u>NM</u>	<u>75</u>	<u>78</u>	<u>73</u>	<u>78</u>	<u>78</u>	<u>78</u>	<u>60</u>	<u>73</u>	<u>78</u>	<u>0</u>	<u>78</u>	<u>++</u>	<u>NM</u>
	0	0	NM	80	80	75	80	80	80	63	80	80	0	80	++	NM
89610	<u>0</u>	<u>0</u>	<u>NM</u>	<u>42</u>	<u>48</u>	<u>47</u>	<u>48</u>	<u>50</u>	<u>48</u>	<u>38</u>	<u>50</u>	<u>50</u>	<u>0</u>	<u>48</u>	<u>++</u>	<u>NM</u>
(X, X, X, X)	<u>0</u>	<u>0</u>	<u>NM</u>	<u>72</u>	<u>73</u>	<u>70</u>	<u>73</u>	<u>73</u>	<u>73</u>	<u>67</u>	<u>70</u>	<u>73</u>	<u>0</u>	<u>73</u>	<u>++</u>	<u>NM</u>
	0	0	NM	75	75	72	75	75	75	70	75	75	0	75	++	NM
89611	<u>0</u>	<u>93</u>	<u>NM</u>	<u>100</u>	<u>98</u>	<u>92</u>	<u>100</u>	<u>100</u>	<u>100</u>	<u>83</u>	<u>100</u>	<u>100</u>	<u>100</u>	<u>100</u>	<u>++</u>	<u>NM</u>
(X, X, X, X)	<u>0</u>	<u>93</u>	<u>NM</u>	<u>100</u>	<u>98</u>	<u>92</u>	<u>100</u>	<u>100</u>	<u>100</u>	<u>83</u>	<u>100</u>	<u>100</u>	<u>100</u>	<u>100</u>	<u>++</u>	<u>NM</u>
	0	93	NM	100	98	92	100	100	100	83	100	100	100	100	++	NM
89614	<u>0</u>	<u>0</u>	<u>NM</u>	<u>38</u>	<u>50</u>	<u>48</u>	<u>50</u>	<u>52</u>	<u>50</u>	<u>35</u>	<u>52</u>	<u>52</u>	<u>0</u>	<u>50</u>	<u>++</u>	<u>NM</u>
(X, X, X, X)	<u>0</u>	<u>0</u>	<u>NM</u>	<u>77</u>	<u>78</u>	<u>75</u>	<u>78</u>	<u>78</u>	<u>78</u>	<u>72</u>	<u>75</u>	<u>78</u>	<u>0</u>	<u>78</u>	<u>++</u>	<u>NM</u>
	0	0	NM	80	80	77	80	80	80	75	80	80	0	80	++	NM
89618	<u>0</u>	<u>0</u>	<u>NM</u>	<u>0</u>	<u>0</u>	<u>0</u>	<u>0</u>	<u>0</u>	<u>0</u>	<u>0</u>	<u>NM</u>	<u>0</u>	<u>0</u>	<u>0</u>	<u>0</u>	<u>NM</u>
(X, X, X, X)	<u>0</u>	<u>0</u>	<u>NM</u>	<u>0</u>	<u>0</u>	<u>0</u>	<u>0</u>	<u>0</u>	<u>0</u>	<u>0</u>	<u>NM</u>	<u>0</u>	<u>0</u>	<u>0</u>	<u>0</u>	<u>NM</u>
	0	0	NM	0	0	0	0	0	0	0	NM	0	0	0	0	NM

NM Reply received, but not including the appropriate monitoring results.**++** Number of reports exceed the maximum number of reports expected to be received.**#** At least one of the stations was not monitored or/and number of reports exceed the maximum number of reports expected to be received.

RESULTS OF THE SPECIFIC MONITORING OF THE OPERATION OF THE WWW

Daily average (%) of SYNOP reports from Antarctic received at centres

Monitoring period: 1 to 15 January 2005

Collecting centre Station	Daily average (%) of SYNOP reports received at 3 hours after observation time															
	1 hour								12 hours							
Observing programme at (00, 06, 12 & 18 UTC)	NMC Montevideo	NMC Santiago	NMC Seoul	RTH Beijing	RTH Brasilia	RTH Buenos Aires	RTH Exeter	RTH Melbourne	RTH Moscow	RTH New Delhi	RTH Norrkoping	RTH Offenbach	RTH Rome	RTH Tokyo	RTH Washington	RTH Wellington
2. Stations transmitting their reports to an Antarctic collecting centre																
Hobart																
Total Hobart: (6, 6, 6, 6)	<u>0</u> <u>0</u> 0	<u>31</u> <u>31</u> 31	<u>0#</u> <u>0#</u> 0#	<u>52</u> <u>71</u> 73	<u>55</u> <u>71</u> 72	<u>52</u> <u>67</u> 68	<u>56</u> <u>72</u> 73	<u>56</u> <u>72</u> 73	<u>56</u> <u>72</u> 73	<u>43</u> <u>61</u> 63	<u>56#</u> <u>70#</u> 73#	<u>56</u> <u>72</u> 73	<u>33</u> <u>33</u> 33	<u>56</u> <u>72</u> 73	<u>0#</u> <u>0#</u> 0#	<u>NM</u> <u>NM</u> NM
Marambio																
88963 (X, X, X, X)	<u>78</u> <u>78</u> 78	<u>95</u> <u>95</u> 95	<u>NM</u> <u>NM</u> NM	<u>++</u> <u>++</u> ++	<u>83</u> <u>83</u> 87	<u>85</u> <u>87</u> 87	<u>83</u> <u>83</u> 87	<u>83</u> <u>83</u> 87	<u>83</u> <u>83</u> 87	<u>NM</u> <u>NM</u> NM	<u>83</u> <u>83</u> 83	<u>83</u> <u>83</u> 87	<u>NM</u> <u>NM</u> NM	<u>83</u> <u>83</u> 87	<u>++</u> <u>++</u> ++	<u>NM</u> <u>NM</u> NM
88968 (X, X, X, X)	<u>80</u> <u>80</u> 80	<u>70</u> <u>93</u> 93	<u>NM</u> <u>NM</u> NM	<u>68</u> <u>70</u> 83	<u>68</u> <u>70</u> 83	<u>75</u> <u>77</u> 85	<u>68</u> <u>70</u> 83	<u>68</u> <u>70</u> 83	<u>68</u> <u>70</u> 83	<u>55</u> <u>58</u> 58	<u>68</u> <u>68</u> 73	<u>68</u> <u>70</u> 83	<u>83</u> <u>85</u> 90	<u>63</u> <u>65</u> 78	<u>++</u> <u>++</u> ++	<u>NM</u> <u>NM</u> NM
89034 (X, ., X, X)	<u>60</u> <u>60</u> 60	<u>72</u> <u>72</u> 72	<u>NM</u> <u>NM</u> NM	<u>65</u> <u>67</u> 68	<u>67</u> <u>67</u> 68	<u>68</u> <u>70</u> 70	<u>65</u> <u>67</u> 68	<u>67</u> <u>67</u> 68	<u>67</u> <u>67</u> 68	<u>52</u> <u>53</u> 53	<u>65</u> <u>67</u> 67	<u>65</u> <u>67</u> 68	<u>80</u> <u>82</u> 83	<u>62</u> <u>63</u> 65	<u>++</u> <u>++</u> ++	<u>NM</u> <u>NM</u> NM
89053 (X, ., X, X)	<u>90</u> <u>90</u> 90	<u>95</u> <u>95</u> 95	<u>NM</u> <u>NM</u> NM	<u>88</u> <u>90</u> 92	<u>88</u> <u>90</u> 92	<u>93</u> <u>95</u> 95	<u>88</u> <u>90</u> 92	<u>88</u> <u>90</u> 92	<u>88</u> <u>90</u> 92	<u>68</u> <u>72</u> 72	<u>88</u> <u>88</u> 90	<u>88</u> <u>90</u> 92	<u>90</u> <u>92</u> 93	<u>83</u> <u>85</u> 87	<u>++</u> <u>++</u> ++	<u>NM</u> <u>NM</u> NM
89055 (X, X, X, X)	<u>83</u> <u>83</u> 83	<u>95</u> <u>95</u> 95	<u>NM</u> <u>NM</u> NM	<u>++</u> <u>++</u> ++	<u>90</u> <u>92</u> 93	<u>95</u> <u>97</u> 97	<u>90</u> <u>92</u> 93	<u>90</u> <u>92</u> 93	<u>90</u> <u>92</u> 93	<u>70</u> <u>73</u> 73	<u>90</u> <u>90</u> 92	<u>90</u> <u>92</u> 93	<u>90</u> <u>92</u> 93	<u>85</u> <u>87</u> 88	<u>++</u> <u>++</u> ++	<u>NM</u> <u>NM</u> NM
89066 (X, ., X, X)	<u>62</u> <u>62</u> 62	<u>72</u> <u>72</u> 72	<u>NM</u> <u>NM</u> NM	<u>63</u> <u>67</u> 72	<u>65</u> <u>67</u> 72	<u>68</u> <u>70</u> 73	<u>63</u> <u>67</u> 72	<u>65</u> <u>67</u> 72	<u>65</u> <u>67</u> 72	<u>50</u> <u>53</u> 53	<u>63</u> <u>65</u> 68	<u>63</u> <u>67</u> 72	<u>78</u> <u>82</u> 87	<u>58</u> <u>62</u> 67	<u>++</u> <u>++</u> ++	<u>NM</u> <u>NM</u> NM
Total Marambio: (6, 3, 6, 6)	<u>76</u> <u>76</u> 76	<u>83</u> <u>87</u> 87	<u>0#</u> <u>0#</u> 0#	<u>48#</u> <u>49#</u> 52#	<u>77</u> <u>78</u> 83	<u>81</u> <u>83</u> 84	<u>76</u> <u>78</u> 83	<u>77</u> <u>78</u> 83	<u>77</u> <u>78</u> 83	<u>49#</u> <u>52#</u> 52#	<u>76</u> <u>77</u> 79	<u>76</u> <u>78</u> 83	<u>70#</u> <u>72#</u> 74#	<u>73</u> <u>74</u> 79	<u>0#</u> <u>0#</u> 0#	<u>NM</u> <u>NM</u> NM
McMurdo																
89009 (X, X, X, X)	<u>0</u> <u>0</u> 0	<u>95</u> <u>95</u> 95	<u>NM</u> <u>NM</u> NM	<u>92</u> <u>92</u> 92	<u>92</u> <u>92</u> 92	<u>83</u> <u>83</u> 83	<u>92</u> <u>92</u> 92	<u>92</u> <u>92</u> 92	<u>90</u> <u>90</u> 90	<u>80</u> <u>80</u> 80	<u>90</u> <u>90</u> 90	<u>92</u> <u>92</u> 92	<u>90</u> <u>90</u> 90	<u>90</u> <u>90</u> 90	<u>++</u> <u>++</u> ++	<u>NM</u> <u>NM</u> NM

NM Reply received, but not including the appropriate monitoring results.**++** Number of reports exceed the maximum number of reports expected to be received.**#** At least one of the stations was not monitored or/and number of reports exceed the maximum number of reports expected to be received.

RESULTS OF THE SPECIFIC MONITORING OF THE OPERATION OF THE WWW

Daily average (%) of SYNOP reports from Antarctic received at centres

Monitoring period: 1 to 15 January 2005

Collecting centre Station	Daily average (%) of SYNOP reports received at 3 hours after observation time															
	1 hour 12 hours															
Observing programme at (00, 06, 12 & 18 UTC)	NMC Montevideo	NMC Santiago	NMC Seoul	RTH Beijing	RTH Brasilia	RTH Buenos Aires	RTH Exeter	RTH Melbourne	RTH Moscow	RTH New Delhi	RTH Norrkoping	RTH Offenbach	RTH Rome	RTH Tokyo	RTH Washington	RTH Wellington
2. Stations transmitting their reports to an Antarctic collecting centre																
McMurdo																
89664	<u>0</u>	<u>0</u>	<u>NM</u>	<u>92</u>	<u>98</u>	<u>90</u>	<u>98</u>	<u>98</u>	<u>97</u>	<u>77</u>	<u>NM</u>	<u>0</u>	<u>0</u>	<u>98</u>	<u>++</u>	<u>NM</u>
(X, X, X, X)	<u>0</u>	<u>0</u>	<u>NM</u>	<u>95</u>	<u>100</u>	<u>92</u>	<u>100</u>	<u>98</u>	<u>98</u>	<u>78</u>	<u>NM</u>	<u>0</u>	<u>0</u>	<u>100</u>	<u>++</u>	<u>NM</u>
	0	0	NM	97	100	92	100	98	98	78	NM	0	0	100	++	NM
Total McMurdo:	<u>0</u>	<u>48</u>	<u>0#</u>	<u>92</u>	<u>95</u>	<u>87</u>	<u>95</u>	<u>95</u>	<u>93</u>	<u>78</u>	<u>45#</u>	<u>46</u>	<u>45</u>	<u>94</u>	<u>0#</u>	<u>NM</u>
(2, 2, 2, 2)	<u>0</u>	<u>48</u>	<u>0#</u>	<u>93</u>	<u>96</u>	<u>88</u>	<u>96</u>	<u>95</u>	<u>94</u>	<u>79</u>	<u>45#</u>	<u>46</u>	<u>45</u>	<u>95</u>	<u>0#</u>	<u>NM</u>
	0	48	0#	94	96	88	96	95	94	79	45#	46	45	95	0#	NM
Rothera																
89061	<u>0</u>	<u>0</u>	<u>NM</u>	<u>98</u>	<u>98</u>	<u>95</u>	<u>97</u>	<u>98</u>	<u>97</u>	<u>87</u>	<u>10</u>	<u>97</u>	<u>0</u>	<u>2</u>	<u>++</u>	<u>NM</u>
(., ., ., ., .)	<u>0</u>	<u>0</u>	<u>NM</u>	<u>98</u>	<u>98</u>	<u>95</u>	<u>97</u>	<u>98</u>	<u>97</u>	<u>88</u>	<u>10</u>	<u>97</u>	<u>0</u>	<u>2</u>	<u>++</u>	<u>NM</u>
	0	0	NM	98	98	95	97	98	97	88	10	97	0	2	++	NM
89062	<u>0</u>	<u>0</u>	<u>NM</u>	<u>77</u>	<u>82</u>	<u>75</u>	<u>83</u>	<u>82</u>	<u>82</u>	<u>75</u>	<u>82</u>	<u>82</u>	<u>0</u>	<u>82</u>	<u>++</u>	<u>NM</u>
(X, X, X, X)	<u>0</u>	<u>0</u>	<u>NM</u>	<u>88</u>	<u>90</u>	<u>85</u>	<u>92</u>	<u>90</u>	<u>90</u>	<u>83</u>	<u>87</u>	<u>90</u>	<u>0</u>	<u>90</u>	<u>++</u>	<u>NM</u>
	0	0	NM	95	95	90	97	95	95	85	93	95	0	95	++	NM
89063	<u>0</u>	<u>0</u>	<u>NM</u>	<u>35</u>	<u>38</u>	<u>38</u>	<u>38</u>	<u>38</u>	<u>38</u>	<u>33</u>	<u>38</u>	<u>38</u>	<u>0</u>	<u>38</u>	<u>++</u>	<u>NM</u>
(X, X, X, X)	<u>0</u>	<u>0</u>	<u>NM</u>	<u>50</u>	<u>52</u>	<u>52</u>	<u>53</u>	<u>52</u>	<u>52</u>	<u>43</u>	<u>48</u>	<u>52</u>	<u>0</u>	<u>52</u>	<u>++</u>	<u>NM</u>
	0	0	NM	75	75	75	77	75	77	43	55	75	0	75	++	NM
Total Rothera:	<u>0</u>	<u>0</u>	<u>0#</u>	<u>70</u>	<u>73</u>	<u>69</u>	<u>73</u>	<u>73</u>	<u>72</u>	<u>65</u>	<u>43</u>	<u>72</u>	<u>0</u>	<u>41</u>	<u>0#</u>	<u>NM</u>
(2, 2, 2, 2)	<u>0</u>	<u>0</u>	<u>0#</u>	<u>79</u>	<u>80</u>	<u>77</u>	<u>81</u>	<u>80</u>	<u>79</u>	<u>72</u>	<u>48</u>	<u>79</u>	<u>0</u>	<u>48</u>	<u>0#</u>	<u>NM</u>
	0	0	0#	89	89	87	90	89	89	72	53	89	0	57	0#	NM
3. Stations transmitting their reports to a GTS centre located outside Antarctic																
Darmstadt (EUMETSAT)																
89002	<u>0</u>	<u>0</u>	<u>NM</u>	<u>98</u>	<u>100</u>	<u>97</u>	<u>100</u>	<u>100</u>	<u>100</u>	<u>83</u>	<u>100</u>	<u>100</u>	<u>100</u>	<u>100</u>	<u>++</u>	<u>NM</u>
(X, X+, X, X)	<u>0</u>	<u>0</u>	<u>NM</u>	<u>100</u>	<u>100</u>	<u>97</u>	<u>100</u>	<u>100</u>	<u>100</u>	<u>85</u>	<u>100</u>	<u>100</u>	<u>100</u>	<u>100</u>	<u>++</u>	<u>NM</u>
	0	0	NM	100	100	97	100	100	100	85	100	100	100	100	++	NM
89022	<u>0</u>	<u>93</u>	<u>NM</u>	<u>68</u>	<u>68</u>	<u>75</u>	<u>67</u>	<u>65</u>	<u>70</u>	<u>57</u>	<u>67</u>	<u>72</u>	<u>70</u>	<u>73</u>	<u>++</u>	<u>NM</u>
(X, X, X, X)	<u>0</u>	<u>93</u>	<u>NM</u>	<u>78</u>	<u>78</u>	<u>75</u>	<u>75</u>	<u>73</u>	<u>78</u>	<u>63</u>	<u>67</u>	<u>80</u>	<u>70</u>	<u>82</u>	<u>++</u>	<u>NM</u>
	0	93	NM	80	78	75	75	73	78	63	68	80	70	82	++	NM

NM Reply received, but not including the appropriate monitoring results.**++** Number of reports exceed the maximum number of reports expected to be received.**#** At least one of the stations was not monitored or/and number of reports exceed the maximum number of reports expected to be received.

RESULTS OF THE SPECIFIC MONITORING OF THE OPERATION OF THE WWW

Daily average (%) of SYNOP reports from Antarctic received at centres

Monitoring period: 1 to 15 January 2005

Collecting centre Station	Daily average (%) of SYNOP reports received at 3 hours after observation time															
	1 hour								12 hours							
Observing programme at (00, 06, 12 & 18 UTC)	NMC Montevideo	NMC Santiago	NMC Seoul	RTH Beijing	RTH Brasilia	RTH Buenos Aires	RTH Exeter	RTH Melbourne	RTH Moscow	RTH New Delhi	RTH Norrkoping	RTH Offenbach	RTH Rome	RTH Tokyo	RTH Washington	RTH Wellington
3. Stations transmitting their reports to a GTS centre located outside Antarctic																
Darmstadt (EUMETSAT)																
89064 (.)	<u>0</u> <u>0</u> 0	<u>0</u> <u>0</u> 0	<u>NM</u> <u>NM</u> NM	<u>65</u> <u>67</u> 67	<u>7</u> <u>7</u> 7	<u>65</u> <u>65</u> 65	<u>0</u> <u>0</u> 0	<u>0</u> <u>0</u> 0	<u>67</u> <u>67</u> 67	<u>0</u> <u>0</u> 0	<u>68</u> <u>68</u> 68	<u>2</u> <u>2</u> 2	<u>70</u> <u>70</u> 70	<u>0</u> <u>0</u> 0	<u>0</u> <u>0</u> 0	<u>NM</u> <u>NM</u> NM
89532 (X, X, X, X)	<u>0</u> <u>0</u> 0	<u>93</u> <u>93</u> 93	<u>NM</u> <u>NM</u> NM	<u>87</u> <u>87</u> 87	<u>85</u> <u>87</u> 87	<u>85</u> <u>85</u> 85	<u>85</u> <u>85</u> 85	<u>85</u> <u>85</u> 85	<u>87</u> <u>87</u> 87	<u>75</u> <u>75</u> 75	<u>87</u> <u>87</u> 87	<u>88</u> <u>88</u> 88	<u>90</u> <u>90</u> 90	<u>90</u> <u>90</u> 90	<u>++</u> <u>++</u> ++	<u>NM</u> <u>NM</u> NM
Total Darmstadt (EUMETSAT): (3, 3, 3, 3)	<u>0</u> <u>0</u> 0	<u>47</u> <u>47</u> 47	<u>0#</u> <u>0#</u> 0#	<u>80</u> <u>83</u> 83	<u>65</u> <u>68</u> 68	<u>80</u> <u>80</u> 80	<u>63</u> <u>65</u> 65	<u>63</u> <u>65</u> 65	<u>81</u> <u>83</u> 83	<u>54</u> <u>56</u> 56	<u>80</u> <u>80</u> 81	<u>65</u> <u>68</u> 68	<u>83</u> <u>83</u> 83	<u>66</u> <u>68</u> 68	<u>0#</u> <u>0#</u> 0#	<u>NM</u> <u>NM</u> NM
New Delhi																
89514 (X, X, X, X)	<u>0</u> <u>0</u> 0	<u>0</u> <u>0</u> 0	<u>NM</u> <u>NM</u> NM	<u>72</u> <u>77</u> 83	<u>70</u> <u>75</u> 82	<u>68</u> <u>73</u> 80	<u>28</u> <u>32</u> 35	<u>73</u> <u>77</u> 83	<u>72</u> <u>77</u> 83	<u>63</u> <u>67</u> 67	<u>28</u> <u>32</u> 32	<u>28</u> <u>32</u> 35	<u>28</u> <u>32</u> 35	<u>72</u> <u>77</u> 83	<u>++</u> <u>++</u> ++	<u>NM</u> <u>NM</u> NM
Total New Delhi: (1, 1, 1, 1)	<u>0</u> <u>0</u> 0	<u>0</u> <u>0</u> 0	<u>0#</u> <u>0#</u> 0#	<u>72</u> <u>77</u> 83	<u>70</u> <u>75</u> 82	<u>68</u> <u>73</u> 80	<u>28</u> <u>32</u> 35	<u>73</u> <u>77</u> 83	<u>72</u> <u>77</u> 83	<u>63</u> <u>67</u> 67	<u>28</u> <u>32</u> 32	<u>28</u> <u>32</u> 35	<u>28</u> <u>32</u> 35	<u>72</u> <u>77</u> 83	<u>0#</u> <u>0#</u> 0#	<u>NM</u> <u>NM</u> NM
Rome																
89662 (X, X, X, X)	<u>0</u> <u>0</u> 0	<u>0</u> <u>0</u> 0	<u>NM</u> <u>NM</u> NM	<u>0</u> <u>0</u> 0	<u>0</u> <u>0</u> 0	<u>0</u> <u>0</u> 0	<u>0</u> <u>0</u> 0	<u>0</u> <u>0</u> 0	<u>0</u> <u>0</u> 0	<u>0</u> <u>0</u> 0	<u>NM</u> <u>NM</u> NM	<u>0</u> <u>0</u> 0	<u>0</u> <u>0</u> 0	<u>0</u> <u>0</u> 0	<u>0</u> <u>0</u> 0	<u>NM</u> <u>NM</u> NM
Total Rome: (1, 1, 1, 1)	<u>0</u> <u>0</u> 0	<u>0</u> <u>0</u> 0	<u>0#</u> <u>0#</u> 0#	<u>0</u> <u>0</u> 0	<u>0</u> <u>0</u> 0	<u>0</u> <u>0</u> 0	<u>0</u> <u>0</u> 0	<u>0</u> <u>0</u> 0	<u>0</u> <u>0</u> 0	<u>0</u> <u>0</u> 0	<u>0#</u> <u>0#</u> 0#	<u>0</u> <u>0</u> 0	<u>0</u> <u>0</u> 0	<u>0</u> <u>0</u> 0	<u>0</u> <u>0</u> 0	<u>NM</u> <u>NM</u> NM
St. Petersburg																
89050 (X, X, X, X)	<u>0</u> <u>0</u> 0	<u>93</u> <u>93</u> 93	<u>NM</u> <u>NM</u> NM	<u>98</u> <u>98</u> 100	<u>100</u> <u>100</u> 100	<u>93</u> <u>93</u> 93	<u>98</u> <u>100</u> 100	<u>100</u> <u>100</u> 100	<u>100</u> <u>100</u> 100	<u>88</u> <u>90</u> 90	<u>100</u> <u>100</u> 100	<u>98</u> <u>100</u> 100	<u>98</u> <u>100</u> 100	<u>100</u> <u>100</u> 100	<u>++</u> <u>++</u> ++	<u>NM</u> <u>NM</u> NM

NM Reply received, but not including the appropriate monitoring results.**++** Number of reports exceed the maximum number of reports expected to be received.**#** At least one of the stations was not monitored or/and number of reports exceed the maximum number of reports expected to be received.

RESULTS OF THE SPECIFIC MONITORING OF THE OPERATION OF THE WWW

Daily average (%) of SYNOP reports from Antarctic received at centres

Monitoring period: 1 to 15 January 2005

Collecting centre Station	Daily average (%) of SYNOP reports received at 3 hours after observation time															
	1 hour								12 hours							
Observing programme at (00, 06, 12 & 18 UTC)	NMC Montevideo	NMC Santiago	NMC Seoul	RTH Beijing	RTH Brasilia	RTH Buenos Aires	RTH Exeter	RTH Melbourne	RTH Moscow	RTH New Delhi	RTH Norrkoping	RTH Offenbach	RTH Rome	RTH Tokyo	RTH Washington	RTH Wellington
3. Stations transmitting their reports to a GTS centre located outside Antarctic																
St. Petersburg																
89512 (X , X , X , X)	<u>0</u> <u>0</u> 0	<u>93</u> <u>93</u> 93	<u>NM</u> <u>NM</u> NM	<u>97</u> <u>97</u> 98	<u>98</u> <u>98</u> 98	<u>92</u> <u>92</u> 92	<u>97</u> <u>98</u> 98	<u>98</u> <u>98</u> 98	<u>98</u> <u>98</u> 98	<u>87</u> <u>88</u> 88	<u>98</u> <u>98</u> 98	<u>97</u> <u>98</u> 98	<u>98</u> <u>100</u> 100	<u>98</u> <u>98</u> 98	<u>++</u> <u>++</u> ++	<u>NM</u> <u>NM</u> NM
89574 (, , ,)	<u>0</u> <u>0</u> 0	<u>93</u> <u>93</u> 93	<u>NM</u> <u>NM</u> NM	<u>97</u> <u>97</u> 98	<u>98</u> <u>98</u> 98	<u>92</u> <u>92</u> 92	<u>97</u> <u>98</u> 98	<u>98</u> <u>98</u> 98	<u>98</u> <u>98</u> 98	<u>88</u> <u>90</u> 90	<u>98</u> <u>98</u> 98	<u>97</u> <u>98</u> 98	<u>98</u> <u>100</u> 100	<u>98</u> <u>98</u> 98	<u>++</u> <u>++</u> ++	<u>NM</u> <u>NM</u> NM
89592 (X , X , X , X)	<u>0</u> <u>0</u> 0	<u>93</u> <u>93</u> 93	<u>NM</u> <u>NM</u> NM	<u>97</u> <u>97</u> 98	<u>98</u> <u>98</u> 98	<u>92</u> <u>92</u> 92	<u>97</u> <u>98</u> 98	<u>98</u> <u>98</u> 98	<u>98</u> <u>98</u> 98	<u>87</u> <u>88</u> 88	<u>98</u> <u>98</u> 98	<u>97</u> <u>98</u> 98	<u>98</u> <u>100</u> 100	<u>98</u> <u>98</u> 98	<u>++</u> <u>++</u> ++	<u>NM</u> <u>NM</u> NM
89606 (X , X , X , X)	<u>0</u> <u>0</u> 0	<u>93</u> <u>93</u> 93	<u>NM</u> <u>NM</u> NM	<u>82</u> <u>83</u> 85	<u>83</u> <u>85</u> 85	<u>78</u> <u>80</u> 80	<u>83</u> <u>85</u> 85	<u>83</u> <u>85</u> 85	<u>83</u> <u>85</u> 85	<u>73</u> <u>77</u> 77	<u>83</u> <u>85</u> 85	<u>83</u> <u>85</u> 85	<u>98</u> <u>100</u> 100	<u>83</u> <u>85</u> 85	<u>++</u> <u>++</u> ++	<u>NM</u> <u>NM</u> NM
Total St. Petersburg: (4 , 4 , 4 , 4)	<u>0</u> <u>0</u> 0	<u>93</u> <u>93</u> 93	<u>0#</u> <u>0#</u> 0#	<u>94</u> <u>94</u> 96	<u>96</u> <u>96</u> 96	<u>89</u> <u>90</u> 90	<u>94</u> <u>96</u> 96	<u>96</u> <u>96</u> 96	<u>96</u> <u>96</u> 96	<u>85</u> <u>87</u> 87	<u>96</u> <u>96</u> 96	<u>94</u> <u>96</u> 96	<u>98</u> <u>100</u> 100	<u>96</u> <u>96</u> 96	<u>0#</u> <u>0#</u> 0#	<u>NM</u> <u>NM</u> NM
Toulouse																
89642 (X , X , X , X*)	<u>0</u> <u>0</u> 0	<u>0</u> <u>0</u> 0	<u>NM</u> <u>NM</u> NM	<u>95</u> <u>97</u> 97	<u>97</u> <u>97</u> 97	<u>90</u> <u>90</u> 90	<u>97</u> <u>97</u> 97	<u>97</u> <u>97</u> 97	<u>97</u> <u>97</u> 97	<u>73</u> <u>73</u> 73	<u>97</u> <u>97</u> 97	<u>97</u> <u>97</u> 97	<u>97</u> <u>97</u> 97	<u>97</u> <u>97</u> 97	<u>++</u> <u>++</u> ++	<u>NM</u> <u>NM</u> NM
Total Toulouse: (1 , 1 , 1 , 1)	<u>0</u> <u>0</u> 0	<u>0</u> <u>0</u> 0	<u>0</u> <u>0</u> 0	<u>95</u> <u>97</u> 97	<u>97</u> <u>97</u> 97	<u>90</u> <u>90</u> 90	<u>97</u> <u>97</u> 97	<u>97</u> <u>97</u> 97	<u>97</u> <u>97</u> 97	<u>73</u> <u>73</u> 73	<u>97</u> <u>97</u> 97	<u>97</u> <u>97</u> 97	<u>97</u> <u>97</u> 97	<u>97</u> <u>97</u> 97	<u>0</u> <u>0</u> 0	<u>NM</u> <u>NM</u> NM
TOTAL ANTARCTIC																
Total Antarctic: (72 , 69 , 72 , 72)	<u>8</u> <u>8</u> 8	<u>29</u> <u>30</u> 30	<u>1#</u> <u>1#</u> 1#	<u>47#</u> <u>60#</u> 64#	<u>51</u> <u>63</u> 67	<u>50</u> <u>61</u> 65	<u>51</u> <u>64</u> 68	<u>51</u> <u>63</u> 67	<u>52</u> <u>64</u> 67	<u>38#</u> <u>50#</u> 53#	<u>47#</u> <u>58#</u> 62#	<u>48</u> <u>60</u> 64	<u>39#</u> <u>46#</u> 48#	<u>49</u> <u>63</u> 66	<u>1#</u> <u>3#</u> 3#	<u>NM</u> <u>NM</u> NM

NM Reply received, but not including the appropriate monitoring results.

++ Number of reports exceed the maximum number of reports expected to be received.

At least one of the stations was not monitored or/and number of reports exceed the maximum number of reports expected to be received.

RESULTS OF THE SPECIFIC MONITORING OF THE OPERATION OF THE WWW

Daily average (%) of TEMP reports Part A from Antarctic received at centres

Monitoring period: 1 to 15 January 2005

Collecting centre Station Observing programme at (00 & 12 UTC)	Daily average (%) of TEMP reports Part A received at 3 hours after observation time 12 hours															
	NMC Montevideo	NMC Santiago	NMC Seoul	RTH Beijing	RTH Brasilia	RTH Buenos Aires	RTH Exeter	RTH Melbourne	RTH Moscow	RTH New Delhi	RTH Norrkoping	RTH Offenbach	RTH Rome	RTH Tokyo	RTH Washington	RTH Wellington
2. Stations transmitting their reports to an Antarctic collecting centre																
Davis																
89571 (RW, .)	<u>0</u> 0	<u>43</u> 43	<u>NM</u> NM	<u>57</u> 57	<u>57</u> 57	<u>53</u> 53	<u>57</u> 57	<u>57</u> 57	<u>57</u> 57	<u>93</u> 93	<u>NM</u> NM	<u>57</u> 57	<u>60</u> 60	<u>57</u> 57	<u>0</u> 0	<u>NM</u> NM
Total Davis: (1, 0)	<u>0</u> 0	<u>43</u> 43	<u>0 #</u> 0 #	<u>57</u> 57	<u>57</u> 57	<u>53</u> 53	<u>57</u> 57	<u>57</u> 57	<u>57</u> 57	<u>93</u> 93	<u>0 #</u> 0 #	<u>57</u> 57	<u>60</u> 60	<u>57</u> 57	<u>0</u> 0	<u>NM</u> NM
Hobart																
89564 (RW, .)	<u>0</u> 0	<u>40</u> 40	<u>NM</u> NM	<u>50</u> 50	<u>50</u> 50	<u>47</u> 47	<u>50</u> 50	<u>50</u> 50	<u>50</u> 50	<u>93</u> 93	<u>NM</u> NM	<u>50</u> 50	<u>60</u> 60	<u>50</u> 50	<u>0</u> 0	<u>NM</u> NM
89611 (RW, .)	<u>0</u> 0	<u>37</u> 37	<u>NM</u> NM	<u>53</u> 53	<u>53</u> 53	<u>47</u> 47	<u>53</u> 53	<u>53</u> 53	<u>53</u> 53	<u>93</u> 93	<u>NM</u> NM	<u>53</u> 53	<u>60</u> 60	<u>53</u> 53	<u>0</u> 0	<u>NM</u> NM
Total Hobart: (2, 0)	<u>0</u> 0	<u>38</u> 38	<u>0 #</u> 0 #	<u>52</u> 52	<u>52</u> 52	<u>47</u> 47	<u>52</u> 52	<u>52</u> 52	<u>52</u> 52	<u>93</u> 93	<u>0 #</u> 0 #	<u>52</u> 52	<u>60</u> 60	<u>52</u> 52	<u>0</u> 0	<u>NM</u> NM
Marambio																
89055 (. , RW)	<u>0</u> 0	<u>0</u> 0	<u>NM</u> NM	<u>0</u> 0	<u>0</u> 0	<u>0</u> 0	<u>0</u> 0	<u>0</u> 0	<u>0</u> 0	<u>0</u> 0	<u>NM</u> NM	<u>0</u> 0	<u>0</u> 0	<u>0</u> 0	<u>0</u> 0	<u>NM</u> NM
Total Marambio: (0, 1)	<u>0</u> 0	<u>0</u> 0	<u>0 #</u> 0 #	<u>0</u> 0	<u>0</u> 0	<u>0</u> 0	<u>0</u> 0	<u>0</u> 0	<u>0</u> 0	<u>0</u> 0	<u>0 #</u> 0 #	<u>0</u> 0	<u>0</u> 0	<u>0</u> 0	<u>0</u> 0	<u>NM</u> NM
McMurdo																
89009 (RW, RW)	<u>0</u> 0	<u>73</u> 73	<u>NM</u> NM	<u>97</u> 100	<u>93</u> 97	<u>93</u> 93	<u>90</u> 97	<u>93</u> 97	<u>90</u> 93	<u>87</u> 87	<u>NM</u> NM	<u>90</u> 97	<u>++</u> ++	<u>93</u> 97	<u>++</u> ++	<u>NM</u> NM
89664 (RW, RW)	<u>0</u> 0	<u>63</u> 63	<u>NM</u> NM	<u>87</u> 87	<u>87</u> 87	<u>83</u> 83	<u>87</u> 87	<u>87</u> 87	<u>87</u> 87	<u>80</u> 83	<u>NM</u> NM	<u>87</u> 87	<u>100</u> 100	<u>87</u> 87	<u>++</u> ++	<u>NM</u> NM

NM Reply received, but not including the appropriate monitoring results.**++** Number of reports exceed the maximum number of reports expected to be received.**#** At least one of the stations was not monitored or/and number of reports exceed the maximum number of reports expected to be received.

RESULTS OF THE SPECIFIC MONITORING OF THE OPERATION OF THE WWW

Daily average (%) of TEMP reports Part A from Antarctic received at centres

Monitoring period: 1 to 15 January 2005

Collecting centre Station Observing programme at (00 & 12 UTC)	Daily average (%) of TEMP reports Part A received at 3 hours after observation time 12 hours															
	NMC Montevideo	NMC Santiago	NMC Seoul	RTH Beijing	RTH Brasilia	RTH Buenos Aires	RTH Exeter	RTH Melbourne	RTH Moscow	RTH New Delhi	RTH Norrkoping	RTH Offenbach	RTH Rome	RTH Tokyo	RTH Washington	RTH Wellington
2. Stations transmitting their reports to an Antarctic collecting centre																
McMurdo																
Total McMurdo: (2, 2)	<u>0</u> 0	<u>68</u> 68	<u>0 #</u> 0 #	<u>92</u> 93	<u>90</u> 92	<u>88</u> 88	<u>88</u> 92	<u>90</u> 92	<u>88</u> 90	<u>83</u> 85	<u>0 #</u> 0 #	<u>88</u> 92	<u>50 #</u> 50 #	<u>90</u> 92	<u>0 #</u> 0 #	<u>NM</u> NM
Rothera																
89062 (. , RW)	<u>0</u> 0	<u>47</u> 47	<u>NM</u> NM	<u>17</u> 27	<u>20</u> 27	<u>20</u> 20	<u>20</u> 27	<u>20</u> 27	<u>20</u> 27	<u>NM</u> NM	<u>0</u> 27	<u>20</u> 27	<u>33</u> 40	<u>20</u> 27	<u>0</u> 0	<u>NM</u> NM
Total Rothera: (0, 1)	<u>0</u> 0	<u>47</u> 47	<u>0 #</u> 0 #	<u>17</u> 27	<u>20</u> 27	<u>20</u> 20	<u>20</u> 27	<u>20</u> 27	<u>20</u> 27	<u>0 #</u> 0 #	<u>0</u> 27	<u>20</u> 27	<u>33</u> 40	<u>20</u> 27	<u>0</u> 0	<u>NM</u> NM
3. Stations transmitting their reports to a GTS centre located outside Antarctic																
Darmstadt (EUMETSAT)																
89002 (. , RW)	<u>0</u> 0	<u>40</u> 40	<u>NM</u> NM	<u>63</u> 63	<u>63</u> 63	<u>63</u> 63	<u>63</u> 63	<u>63</u> 63	<u>63</u> 63	<u>53</u> 53	<u>NM</u> NM	<u>63</u> 63	<u>63</u> 63	<u>63</u> 63	<u>++</u> ++	<u>NM</u> NM
89022 (. , RW)	<u>0</u> 0	<u>23</u> 23	<u>NM</u> NM	<u>37</u> 40	<u>37</u> 40	<u>33</u> 33	<u>37</u> 43	<u>37</u> 40	<u>37</u> 40	<u>17</u> 33	<u>27</u> 40	<u>37</u> 40	<u>37</u> 40	<u>37</u> 40	<u>0</u> 0	<u>NM</u> NM
89532 (RW, RW)	<u>0</u> 0	<u>43</u> 43	<u>NM</u> NM	<u>83</u> 83	<u>83</u> 83	<u>77</u> 77	<u>83</u> 83	<u>83</u> 83	<u>83</u> 83	<u>93</u> 93	<u>NM</u> NM	<u>87</u> 87	<u>87</u> 87	<u>83</u> 83	<u>++</u> ++	<u>NM</u> NM
Total Darmstadt (EU) (1, 3)	<u>0</u> 0	<u>36</u> 36	<u>0 #</u> 0 #	<u>61</u> 62	<u>61</u> 62	<u>58</u> 58	<u>61</u> 63	<u>61</u> 62	<u>61</u> 62	<u>54</u> 60	<u>9 #</u> 13 #	<u>62</u> 63	<u>62</u> 63	<u>61</u> 62	<u>0 #</u> 0 #	<u>NM</u> NM
St. Petersburg																
89512 (RW, .)	<u>0</u> 0	<u>43</u> 43	<u>NM</u> NM	<u>50</u> 50	<u>47</u> 47	<u>47</u> 47	<u>50</u> 50	<u>50</u> 50	<u>50</u> 50	<u>47</u> 47	<u>NM</u> NM	<u>50</u> 50	<u>100</u> 100	<u>50</u> 50	<u>0</u> 0	<u>NM</u> NM
89592 (RW, .)	<u>0</u> 0	<u>0</u> 0	<u>NM</u> NM	<u>50</u> 50	<u>47</u> 47	<u>47</u> 47	<u>50</u> 50	<u>50</u> 50	<u>50</u> 50	<u>47</u> 47	<u>NM</u> NM	<u>50</u> 50	<u>100</u> 100	<u>50</u> 50	<u>0</u> 0	<u>NM</u> NM

NM Reply received, but not including the appropriate monitoring results.

++ Number of reports exceed the maximum number of reports expected to be received.

At least one of the stations was not monitored or/and number of reports exceed the maximum number of reports expected to be received.

RESULTS OF THE SPECIFIC MONITORING OF THE OPERATION OF THE WWW

Daily average (%) of TEMP reports Part A from Antarctic received at centres

Monitoring period: 1 to 15 January 2005

Collecting centre Station Observing programme at (00 & 12 UTC)	Daily average (%) of TEMP reports Part A received at 3 hours after observation time 12 hours															
	NMC Montevideo	NMC Santiago	NMC Seoul	RTH Beijing	RTH Brasilia	RTH Buenos Aires	RTH Exeter	RTH Melbourne	RTH Moscow	RTH New Delhi	RTH Norrkoping	RTH Offenbach	RTH Rome	RTH Tokyo	RTH Washington	RTH Wellington
3. Stations transmitting their reports to a GTS centre located outside Antarctic																
St. Petersburg																
Total St. Petersburg: (2, 0)	<u>0</u> 0	<u>22</u> 22	<u>0 #</u> 0 #	<u>50</u> 50	<u>47</u> 47	<u>47</u> 47	<u>50</u> 50	<u>50</u> 50	<u>50</u> 50	<u>47</u> 47	<u>0 #</u> 0 #	<u>50</u> 50	<u>100</u> 100	<u>50</u> 50	<u>0</u> 0	<u>NM</u> NM
Toulouse																
89642 (RW, .)	<u>0</u> 0	<u>0</u> 0	<u>NM</u> NM	<u>50</u> 50	<u>50</u> 50	<u>3</u> 3	<u>43</u> 43	<u>50</u> 50	<u>43</u> 43	<u>50</u> 50	<u>50</u> 50	<u>50</u> 50	<u>50</u> 50	<u>47</u> 47	<u>0</u> 0	<u>NM</u> NM
Total Toulouse: (1, 0)	<u>0</u> 0	<u>0</u> 0	<u>0 #</u> 0 #	<u>50</u> 50	<u>50</u> 50	<u>3</u> 3	<u>43</u> 43	<u>50</u> 50	<u>43</u> 43	<u>50</u> 50	<u>50</u> 50	<u>50</u> 50	<u>50</u> 50	<u>47</u> 47	<u>0</u> 0	<u>NM</u> NM
TOTAL ANTARCTIC																
Total Antarctic: (9, 7)	<u>0</u> 0	<u>35</u> 35	<u>0 #</u> 0 #	<u>53</u> 55	<u>53</u> 54	<u>47</u> 47	<u>53</u> 54	<u>53</u> 54	<u>53</u> 54	<u>58 #</u> 59 #	<u>6 #</u> 9 #	<u>53</u> 55	<u>58 #</u> 58 #	<u>53</u> 54	<u>0 #</u> 0 #	<u>NM</u> NM

NM Reply received, but not including the appropriate monitoring results.

++ Number of reports exceed the maximum number of reports expected to be received.

At least one of the stations was not monitored or/and number of reports exceed the maximum number of reports expected to be received.

RESULTS OF THE SPECIFIC MONITORING OF THE OPERATION OF THE WWW

Daily average (%) of TEMP reports Part B from Antarctic received at centres

Monitoring period: 1 to 15 January 2005

Collecting centre Station Observing programme at (00 & 12 UTC)	Daily average (%) of TEMP reports Part B received at 3 hours after observation time 12 hours															
	NMC Montevideo	NMC Santiago	NMC Seoul	RTH Beijing	RTH Brasilia	RTH Buenos Aires	RTH Exeter	RTH Melbourne	RTH Moscow	RTH New Delhi	RTH Norrkoping	RTH Offenbach	RTH Rome	RTH Tokyo	RTH Washington	RTH Wellington
2. Stations transmitting their reports to an Antarctic collecting centre																
Davis																
89571 (RW, .)	<u>0</u> 0	<u>43</u> 43	<u>NM</u> NM	<u>57</u> 57	<u>57</u> 57	<u>57</u> 57	<u>57</u> 57	<u>57</u> 57	<u>53</u> 53	<u>93</u> 93	<u>NM</u> NM	<u>57</u> 57	<u>60</u> 60	<u>57</u> 57	<u>0</u> 0	<u>NM</u> NM
Total Davis: (1, 0)	<u>0</u> 0	<u>43</u> 43	<u>0 #</u> 0 #	<u>57</u> 57	<u>57</u> 57	<u>57</u> 57	<u>57</u> 57	<u>57</u> 57	<u>53</u> 53	<u>93</u> 93	<u>0 #</u> 0 #	<u>57</u> 57	<u>60</u> 60	<u>57</u> 57	<u>0</u> 0	<u>NM</u> NM
Hobart																
89564 (RW, .)	<u>0</u> 0	<u>40</u> 40	<u>NM</u> NM	<u>47</u> 47	<u>47</u> 47	<u>43</u> 43	<u>47</u> 47	<u>47</u> 47	<u>43</u> 43	<u>93</u> 93	<u>NM</u> NM	<u>47</u> 47	<u>60</u> 60	<u>47</u> 47	<u>0</u> 0	<u>NM</u> NM
89611 (RW, .)	<u>0</u> 0	<u>37</u> 37	<u>NM</u> NM	<u>53</u> 53	<u>53</u> 53	<u>53</u> 53	<u>53</u> 53	<u>53</u> 53	<u>50</u> 50	<u>93</u> 93	<u>NM</u> NM	<u>53</u> 53	<u>60</u> 60	<u>53</u> 53	<u>0</u> 0	<u>NM</u> NM
Total Hobart: (2, 0)	<u>0</u> 0	<u>38</u> 38	<u>0 #</u> 0 #	<u>50</u> 50	<u>50</u> 50	<u>48</u> 48	<u>50</u> 50	<u>50</u> 50	<u>47</u> 47	<u>93</u> 93	<u>0 #</u> 0 #	<u>50</u> 50	<u>60</u> 60	<u>50</u> 50	<u>0</u> 0	<u>NM</u> NM
Marambio																
89055 (. , RW)	<u>0</u> 0	<u>0</u> 0	<u>NM</u> NM	<u>0</u> 0	<u>0</u> 0	<u>0</u> 0	<u>0</u> 0	<u>0</u> 0	<u>0</u> 0	<u>0</u> 0	<u>NM</u> NM	<u>0</u> 0	<u>0</u> 0	<u>0</u> 0	<u>0</u> 0	<u>NM</u> NM
Total Marambio: (0, 1)	<u>0</u> 0	<u>0</u> 0	<u>0 #</u> 0 #	<u>0</u> 0	<u>0</u> 0	<u>0</u> 0	<u>0</u> 0	<u>0</u> 0	<u>0</u> 0	<u>0</u> 0	<u>0 #</u> 0 #	<u>0</u> 0	<u>0</u> 0	<u>0</u> 0	<u>0</u> 0	<u>NM</u> NM
McMurdo																
89009 (RW, RW)	<u>0</u> 0	<u>73</u> 73	<u>NM</u> NM	<u>97</u> 100	<u>97</u> 100	<u>97</u> 97	<u>93</u> 100	<u>97</u> 100	<u>87</u> 90	<u>83</u> 83	<u>NM</u> NM	<u>93</u> 100	<u>++</u> ++	<u>97</u> 100	<u>++</u> ++	<u>NM</u> NM
89664 (RW, RW)	<u>0</u> 0	<u>63</u> 63	<u>NM</u> NM	<u>90</u> 90	<u>90</u> 90	<u>87</u> 87	<u>90</u> 90	<u>90</u> 90	<u>87</u> 87	<u>80</u> 83	<u>NM</u> NM	<u>90</u> 90	<u>100</u> 100	<u>90</u> 90	<u>++</u> ++	<u>NM</u> NM

NM Reply received, but not including the appropriate monitoring results.**++** Number of reports exceed the maximum number of reports expected to be received.**#** At least one of the stations was not monitored or/and number of reports exceed the maximum number of reports expected to be received.

RESULTS OF THE SPECIFIC MONITORING OF THE OPERATION OF THE WWW

Daily average (%) of TEMP reports Part B from Antarctic received at centres

Monitoring period: 1 to 15 January 2005

Collecting centre Station Observing programme at (00 & 12 UTC)	Daily average (%) of TEMP reports Part B received at 3 hours after observation time 12 hours															
	NMC Montevideo	NMC Santiago	NMC Seoul	RTH Beijing	RTH Brasilia	RTH Buenos Aires	RTH Exeter	RTH Melbourne	RTH Moscow	RTH New Delhi	RTH Norrkoping	RTH Offenbach	RTH Rome	RTH Tokyo	RTH Washington	RTH Wellington
2. Stations transmitting their reports to an Antarctic collecting centre																
McMurdo																
Total McMurdo: (2, 2)	<u>0</u> 0	<u>68</u> 68	<u>0 #</u> 0 #	<u>93</u> 95	<u>93</u> 95	<u>92</u> 92	<u>92</u> 95	<u>93</u> 95	<u>87</u> 88	<u>82</u> 83	<u>0 #</u> 0 #	<u>92</u> 95	<u>50 #</u> 50 #	<u>93</u> 95	<u>0 #</u> 0 #	<u>NM</u> NM
Rothera																
89062 (. , RW)	<u>0</u> 0	<u>47</u> 47	<u>NM</u> NM	<u>17</u> 27	<u>20</u> 27	<u>20</u> 20	<u>20</u> 27	<u>20</u> 27	<u>20</u> 27	<u>NM</u> NM	<u>0</u> 27	<u>20</u> 27	<u>33</u> 40	<u>20</u> 27	<u>0</u> 0	<u>NM</u> NM
Total Rothera: (0, 1)	<u>0</u> 0	<u>47</u> 47	<u>0 #</u> 0 #	<u>17</u> 27	<u>20</u> 27	<u>20</u> 20	<u>20</u> 27	<u>20</u> 27	<u>20</u> 27	<u>0 #</u> 0 #	<u>0</u> 27	<u>20</u> 27	<u>33</u> 40	<u>20</u> 27	<u>0</u> 0	<u>NM</u> NM
3. Stations transmitting their reports to a GTS centre located outside Antarctic																
Darmstadt (EUMETSAT)																
89002 (. , RW)	<u>0</u> 0	<u>33</u> 33	<u>NM</u> NM	<u>47</u> 47	<u>47</u> 47	<u>47</u> 47	<u>47</u> 47	<u>47</u> 47	<u>47</u> 47	<u>53</u> 53	<u>NM</u> NM	<u>47</u> 47	<u>47</u> 47	<u>47</u> 47	<u>0</u> 0	<u>NM</u> NM
89022 (. , RW)	<u>0</u> 0	<u>23</u> 23	<u>NM</u> NM	<u>37</u> 40	<u>37</u> 40	<u>37</u> 37	<u>37</u> 43	<u>37</u> 40	<u>37</u> 40	<u>17</u> 33	<u>27</u> 40	<u>37</u> 40	<u>37</u> 40	<u>37</u> 40	<u>0</u> 0	<u>NM</u> NM
89532 (RW, RW)	<u>0</u> 0	<u>47</u> 47	<u>NM</u> NM	<u>87</u> 87	<u>87</u> 87	<u>83</u> 83	<u>87</u> 87	<u>83</u> 83	<u>83</u> 83	<u>93</u> 93	<u>NM</u> NM	<u>87</u> 87	<u>87</u> 87	<u>87</u> 87	<u>++</u> ++	<u>NM</u> NM
Total Darmstadt (EU) (1, 3)	<u>0</u> 0	<u>34</u> 34	<u>0 #</u> 0 #	<u>57</u> 58	<u>57</u> 58	<u>56</u> 56	<u>57</u> 59	<u>56</u> 57	<u>56</u> 57	<u>54</u> 60	<u>9 #</u> 13 #	<u>57</u> 58	<u>57</u> 58	<u>57</u> 58	<u>0 #</u> 0 #	<u>NM</u> NM
St. Petersburg																
89512 (RW, .)	<u>0</u> 0	<u>43</u> 43	<u>NM</u> NM	<u>50</u> 50	<u>47</u> 47	<u>50</u> 50	<u>50</u> 50	<u>50</u> 50	<u>47</u> 47	<u>47</u> 47	<u>NM</u> NM	<u>50</u> 50	<u>100</u> 100	<u>50</u> 50	<u>0</u> 0	<u>NM</u> NM
89592 (RW, .)	<u>0</u> 0	<u>0</u> 0	<u>NM</u> NM	<u>50</u> 50	<u>47</u> 47	<u>50</u> 50	<u>50</u> 50	<u>50</u> 50	<u>47</u> 47	<u>47</u> 47	<u>NM</u> NM	<u>50</u> 50	<u>100</u> 100	<u>50</u> 50	<u>0</u> 0	<u>NM</u> NM

NM Reply received, but not including the appropriate monitoring results.

++ Number of reports exceed the maximum number of reports expected to be received.

At least one of the stations was not monitored or/and number of reports exceed the maximum number of reports expected to be received.

RESULTS OF THE SPECIFIC MONITORING OF THE OPERATION OF THE WWW

Daily average (%) of TEMP reports Part B from Antarctic received at centres

Monitoring period: 1 to 15 January 2005

Collecting centre Station Observing programme at (00 & 12 UTC)	Daily average (%) of TEMP reports Part B received at 3 hours after observation time 12 hours															
	NMC Montevideo	NMC Santiago	NMC Seoul	RTH Beijing	RTH Brasilia	RTH Buenos Aires	RTH Exeter	RTH Melbourne	RTH Moscow	RTH New Delhi	RTH Norrkoping	RTH Offenbach	RTH Rome	RTH Tokyo	RTH Washington	RTH Wellington

3. Stations transmitting their reports to a GTS centre located outside Antarctic

St. Petersburg

Total St. Petersburg: (2, 0)	<u>0</u> 0	<u>22</u> 22	<u>0 #</u> 0 #	<u>50</u> 50	<u>47</u> 47	<u>50</u> 50	<u>50</u> 50	<u>50</u> 50	<u>47</u> 47	<u>47</u> 47	<u>0 #</u> 0 #	<u>50</u> 50	<u>100</u> 100	<u>50</u> 50	<u>0</u> 0	<u>NM</u> NM
----------------------------------	---------------	-----------------	-------------------	-----------------	-----------------	-----------------	-----------------	-----------------	-----------------	-----------------	-------------------	-----------------	-------------------	-----------------	---------------	-----------------

Toulouse

89642 (RW, .)	<u>0</u> 0	<u>0</u> 0	<u>NM</u> NM	<u>50</u> 50	<u>50</u> 50	<u>3</u> 3	<u>50</u> 50	<u>50</u> 50	<u>43</u> 43	<u>47</u> 47	<u>NM</u> NM	<u>50</u> 50	<u>50</u> 50	<u>47</u> 47	<u>0</u> 0	<u>NM</u> NM
Total Toulouse: (1, 0)	<u>0</u> 0	<u>0</u> 0	<u>0 #</u> 0 #	<u>50</u> 50	<u>50</u> 50	<u>3</u> 3	<u>50</u> 50	<u>50</u> 50	<u>43</u> 43	<u>47</u> 47	<u>0 #</u> 0 #	<u>50</u> 50	<u>50</u> 50	<u>47</u> 47	<u>0</u> 0	<u>NM</u> NM

TOTAL ANTARCTIC

Total Antarctic: (9, 7)	<u>0</u> 0	<u>35</u> 35	<u>0 #</u> 0 #	<u>52</u> 54	<u>52</u> 53	<u>48</u> 48	<u>52</u> 54	<u>52</u> 53	<u>49</u> 51	<u>57 #</u> 59 #	<u>2 #</u> 5 #	<u>52</u> 54	<u>56 #</u> 57 #	<u>52</u> 53	<u>0 #</u> 0 #	<u>NM</u> NM
-----------------------------	---------------	-----------------	-------------------	-----------------	-----------------	-----------------	-----------------	-----------------	-----------------	---------------------	-------------------	-----------------	---------------------	-----------------	-------------------	-----------------

NM Reply received, but not including the appropriate monitoring results.

++ Number of reports exceed the maximum number of reports expected to be received.

At least one of the stations was not monitored or/and number of reports exceed the maximum number of reports expected to be received.

RESULTS OF THE SPECIFIC MONITORING OF THE OPERATION OF THE WWW

Daily average (%) of TEMP reports Part C from Antarctic received at centres

Monitoring period: 1 to 15 January 2005

Collecting centre Station Observing programme at (00 & 12 UTC)	Daily average (%) of TEMP reports Part C received at 3 hours after observation time 12 hours															
	NMC Montevideo	NMC Santiago	NMC Seoul	RTH Beijing	RTH Brasilia	RTH Buenos Aires	RTH Exeter	RTH Melbourne	RTH Moscow	RTH New Delhi	RTH Norrkoping	RTH Offenbach	RTH Rome	RTH Tokyo	RTH Washington	RTH Wellington
2. Stations transmitting their reports to an Antarctic collecting centre																
Davis																
89571 (RW, .)	<u>0</u> 0	<u>43</u> 43	<u>NM</u> NM	<u>7</u> 7	<u>0</u> 0	<u>57</u> 57	<u>57</u> 57	<u>57</u> 57	<u>57</u> 57	<u>93</u> 93	<u>NM</u> NM	<u>57</u> 57	<u>60</u> 60	<u>57</u> 57	<u>0</u> 0	<u>NM</u> NM
Total Davis: (1, 0)	<u>0</u> 0	<u>43</u> 43	<u>0 #</u> 0 #	<u>7</u> 7	<u>0</u> 0	<u>57</u> 57	<u>57</u> 57	<u>57</u> 57	<u>57</u> 57	<u>93</u> 93	<u>0 #</u> 0 #	<u>57</u> 57	<u>60</u> 60	<u>57</u> 57	<u>0</u> 0	<u>NM</u> NM
Hobart																
89564 (RW, .)	<u>0</u> 0	<u>40</u> 40	<u>NM</u> NM	<u>47</u> 47	<u>0</u> 0	<u>47</u> 47	<u>47</u> 47	<u>47</u> 47	<u>47</u> 47	<u>93</u> 93	<u>NM</u> NM	<u>47</u> 47	<u>60</u> 60	<u>47</u> 47	<u>0</u> 0	<u>NM</u> NM
89611 (RW, .)	<u>0</u> 0	<u>37</u> 37	<u>NM</u> NM	<u>10</u> 10	<u>0</u> 0	<u>50</u> 50	<u>53</u> 53	<u>53</u> 53	<u>53</u> 53	<u>93</u> 93	<u>NM</u> NM	<u>53</u> 53	<u>60</u> 60	<u>53</u> 53	<u>0</u> 0	<u>NM</u> NM
Total Hobart: (2, 0)	<u>0</u> 0	<u>38</u> 38	<u>0 #</u> 0 #	<u>28</u> 28	<u>0</u> 0	<u>48</u> 48	<u>50</u> 50	<u>50</u> 50	<u>50</u> 50	<u>93</u> 93	<u>0 #</u> 0 #	<u>50</u> 50	<u>60</u> 60	<u>50</u> 50	<u>0</u> 0	<u>NM</u> NM
Marambio																
89055 (. , RW)	<u>0</u> 0	<u>0</u> 0	<u>NM</u> NM	<u>0</u> 0	<u>0</u> 0	<u>0</u> 0	<u>0</u> 0	<u>0</u> 0	<u>0</u> 0	<u>0</u> 0	<u>NM</u> NM	<u>0</u> 0	<u>0</u> 0	<u>0</u> 0	<u>0</u> 0	<u>NM</u> NM
Total Marambio: (0, 1)	<u>0</u> 0	<u>0</u> 0	<u>0 #</u> 0 #	<u>0</u> 0	<u>0</u> 0	<u>0</u> 0	<u>0</u> 0	<u>0</u> 0	<u>0</u> 0	<u>0</u> 0	<u>0 #</u> 0 #	<u>0</u> 0	<u>0</u> 0	<u>0</u> 0	<u>0</u> 0	<u>NM</u> NM
McMurdo																
89009 (RW, RW)	<u>0</u> 0	<u>73</u> 73	<u>NM</u> NM	<u>93</u> 97	<u>0</u> 0	<u>93</u> 93	<u>93</u> 97	<u>93</u> 97	<u>93</u> 97	<u>83</u> 83	<u>NM</u> NM	<u>93</u> 97	<u>++</u> ++	<u>93</u> 97	<u>0</u> 0	<u>NM</u> NM
89664 (RW, RW)	<u>0</u> 0	<u>63</u> 63	<u>NM</u> NM	<u>67</u> 67	<u>0</u> 0	<u>83</u> 83	<u>83</u> 83	<u>83</u> 83	<u>83</u> 83	<u>83</u> 87	<u>NM</u> NM	<u>83</u> 83	<u>100</u> 100	<u>83</u> 83	<u>0</u> 0	<u>NM</u> NM

NM Reply received, but not including the appropriate monitoring results.**++** Number of reports exceed the maximum number of reports expected to be received.**#** At least one of the stations was not monitored or/and number of reports exceed the maximum number of reports expected to be received.

RESULTS OF THE SPECIFIC MONITORING OF THE OPERATION OF THE WWW

Daily average (%) of TEMP reports Part C from Antarctic received at centres

Monitoring period: 1 to 15 January 2005

Collecting centre Station	Daily average (%) of TEMP reports Part C received at 3 hours after observation time 12 hours															
	NMC Montevideo	NMC Santiago	NMC Seoul	RTH Beijing	RTH Brasilia	RTH Buenos Aires	RTH Exeter	RTH Melbourne	RTH Moscow	RTH New Delhi	RTH Norrkoping	RTH Offenbach	RTH Rome	RTH Tokyo	RTH Washington	RTH Wellington
2. Stations transmitting their reports to an Antarctic collecting centre																
McMurdo																
Total McMurdo: (2, 2)	<u>0</u> 0	<u>68</u> 68	<u>0 #</u> 0 #	<u>80</u> 82	<u>0</u> 0	<u>88</u> 88	<u>88</u> 90	<u>88</u> 90	<u>88</u> 90	<u>83</u> 85	<u>0 #</u> 0 #	<u>88</u> 90	<u>50 #</u> 50 #	<u>88</u> 90	<u>0</u> 0	<u>NM</u> NM
Rothera																
89062 (. , RW)	<u>0</u> 0	<u>47</u> 47	<u>NM</u> NM	<u>17</u> 27	<u>20</u> 27	<u>20</u> 20	<u>20</u> 27	<u>20</u> 27	<u>20</u> 27	<u>NM</u> NM	<u>0</u> 27	<u>20</u> 27	<u>33</u> 40	<u>20</u> 27	<u>7</u> 7	<u>NM</u> NM
Total Rothera: (0, 1)	<u>0</u> 0	<u>47</u> 47	<u>0 #</u> 0 #	<u>17</u> 27	<u>20</u> 27	<u>20</u> 20	<u>20</u> 27	<u>20</u> 27	<u>20</u> 27	<u>0 #</u> 0 #	<u>0</u> 27	<u>20</u> 27	<u>33</u> 40	<u>20</u> 27	<u>7</u> 7	<u>NM</u> NM
3. Stations transmitting their reports to a GTS centre located outside Antarctic																
Darmstadt (EUMETSAT)																
89002 (. , RW)	<u>0</u> 0	<u>37</u> 37	<u>NM</u> NM	<u>60</u> 60	<u>60</u> 60	<u>60</u> 60	<u>60</u> 60	<u>60</u> 60	<u>60</u> 60	<u>50</u> 50	<u>NM</u> NM	<u>60</u> 60	<u>63</u> 63	<u>60</u> 60	<u>0</u> 0	<u>NM</u> NM
89022 (. , RW)	<u>0</u> 0	<u>23</u> 23	<u>NM</u> NM	<u>37</u> 40	<u>37</u> 40	<u>37</u> 37	<u>37</u> 43	<u>37</u> 40	<u>37</u> 40	<u>17</u> 33	<u>27</u> 40	<u>37</u> 40	<u>37</u> 40	<u>37</u> 40	<u>0</u> 0	<u>NM</u> NM
89532 (RW, RW)	<u>0</u> 0	<u>47</u> 47	<u>NM</u> NM	<u>87</u> 87	<u>0</u> 0	<u>83</u> 83	<u>83</u> 83	<u>83</u> 83	<u>87</u> 87	<u>93</u> 93	<u>NM</u> NM	<u>83</u> 83	<u>87</u> 87	<u>83</u> 83	<u>0</u> 0	<u>NM</u> NM
Total Darmstadt (EU) (1, 3)	<u>0</u> 0	<u>36</u> 36	<u>0 #</u> 0 #	<u>61</u> 62	<u>32</u> 33	<u>60</u> 60	<u>60</u> 62	<u>60</u> 61	<u>61</u> 62	<u>53</u> 59	<u>9 #</u> 13 #	<u>60</u> 61	<u>62</u> 63	<u>60</u> 61	<u>0</u> 0	<u>NM</u> NM
St. Petersburg																
89512 (RW, .)	<u>0</u> 0	<u>43</u> 43	<u>NM</u> NM	<u>43</u> 43	<u>0</u> 0	<u>43</u> 43	<u>43</u> 43	<u>43</u> 43	<u>43</u> 43	<u>43</u> 43	<u>NM</u> NM	<u>43</u> 43	<u>100</u> 100	<u>43</u> 43	<u>0</u> 0	<u>NM</u> NM
89592 (RW, .)	<u>0</u> 0	<u>0</u> 0	<u>NM</u> NM	<u>0</u> 0	<u>0</u> 0	<u>50</u> 50	<u>50</u> 50	<u>50</u> 50	<u>50</u> 50	<u>47</u> 47	<u>NM</u> NM	<u>50</u> 50	<u>100</u> 100	<u>50</u> 50	<u>0</u> 0	<u>NM</u> NM

NM Reply received, but not including the appropriate monitoring results.

++ Number of reports exceed the maximum number of reports expected to be received.

At least one of the stations was not monitored or/and number of reports exceed the maximum number of reports expected to be received.

RESULTS OF THE SPECIFIC MONITORING OF THE OPERATION OF THE WWW

Daily average (%) of TEMP reports Part C from Antarctic received at centres

Monitoring period: 1 to 15 January 2005

Collecting centre Station Observing programme at (00 & 12 UTC)	Daily average (%) of TEMP reports Part C received at 3 hours after observation time 12 hours															
	NMC Montevideo	NMC Santiago	NMC Seoul	RTH Beijing	RTH Brasilia	RTH Buenos Aires	RTH Exeter	RTH Melbourne	RTH Moscow	RTH New Delhi	RTH Norrkoping	RTH Offenbach	RTH Rome	RTH Tokyo	RTH Washington	RTH Wellington

3. Stations transmitting their reports to a GTS centre located outside Antarctic

St. Petersburg

Total St. Petersburg: (2, 0)	<u>0</u> 0	<u>22</u> 22	<u>0 #</u> 0 #	<u>22</u> 22	<u>0</u> 0	<u>47</u> 47	<u>47</u> 47	<u>47</u> 47	<u>47</u> 47	<u>45</u> 45	<u>0 #</u> 0 #	<u>47</u> 47	<u>100</u> 100	<u>47</u> 47	<u>0</u> 0	<u>NM</u> NM
----------------------------------	---------------	-----------------	-------------------	-----------------	---------------	-----------------	-----------------	-----------------	-----------------	-----------------	-------------------	-----------------	-------------------	-----------------	---------------	-----------------

Toulouse

89642 (RW, .)	<u>0</u> 0	<u>0</u> 0	<u>NM</u> NM	<u>33</u> 33	<u>0</u> 0	<u>0</u> 0	<u>33</u> 33	<u>33</u> 33	<u>33</u> 33	<u>3</u> 3	<u>NM</u> NM	<u>33</u> 33	<u>50</u> 50	<u>33</u> 33	<u>0</u> 0	<u>NM</u> NM
Total Toulouse: (1, 0)	<u>0</u> 0	<u>0</u> 0	<u>0 #</u> 0 #	<u>33</u> 33	<u>0</u> 0	<u>0</u> 0	<u>33</u> 33	<u>33</u> 33	<u>33</u> 33	<u>3</u> 3	<u>0 #</u> 0 #	<u>33</u> 33	<u>50</u> 50	<u>33</u> 33	<u>0</u> 0	<u>NM</u> NM

TOTAL ANTARCTIC

Total Antarctic: (9, 7)	<u>0</u> 0	<u>35</u> 35	<u>0 #</u> 0 #	<u>38</u> 40	<u>9</u> 10	<u>48</u> 48	<u>51</u> 52	<u>51</u> 52	<u>51</u> 52	<u>54 #</u> 55 #	<u>2 #</u> 5 #	<u>51</u> 52	<u>58 #</u> 58 #	<u>51</u> 52	<u>1</u> 1	<u>NM</u> NM
-----------------------------	---------------	-----------------	-------------------	-----------------	----------------	-----------------	-----------------	-----------------	-----------------	---------------------	-------------------	-----------------	---------------------	-----------------	---------------	-----------------

NM Reply received, but not including the appropriate monitoring results.

++ Number of reports exceed the maximum number of reports expected to be received.

At least one of the stations was not monitored or/and number of reports exceed the maximum number of reports expected to be received.

RESULTS OF THE SPECIFIC MONITORING OF THE OPERATION OF THE WWW

Daily average (%) of TEMP reports Part D from Antarctic received at centres

Monitoring period: 1 to 15 January 2005

Collecting centre Station Observing programme at (00 & 12 UTC)	Daily average (%) of TEMP reports Part D received at 3 hours after observation time 12 hours															
	NMC Montevideo	NMC Santiago	NMC Seoul	RTH Beijing	RTH Brasilia	RTH Buenos Aires	RTH Exeter	RTH Melbourne	RTH Moscow	RTH New Delhi	RTH Norrkoping	RTH Offenbach	RTH Rome	RTH Tokyo	RTH Washington	RTH Wellington
2. Stations transmitting their reports to an Antarctic collecting centre																
Davis																
89571 (RW, .)	<u>0</u> 0	<u>43</u> 43	<u>NM</u> NM	<u>7</u> 10	<u>0</u> 0	<u>57</u> 57	<u>57</u> 57	<u>57</u> 57	<u>57</u> 57	<u>93</u> 93	<u>NM</u> NM	<u>57</u> 57	<u>60</u> 60	<u>57</u> 57	<u>0</u> 0	<u>NM</u> NM
Total Davis: (1, 0)	<u>0</u> 0	<u>43</u> 43	<u>0 #</u> 0 #	<u>7</u> 10	<u>0</u> 0	<u>57</u> 57	<u>57</u> 57	<u>57</u> 57	<u>57</u> 57	<u>93</u> 93	<u>0 #</u> 0 #	<u>57</u> 57	<u>60</u> 60	<u>57</u> 57	<u>0</u> 0	<u>NM</u> NM
Hobart																
89564 (RW, .)	<u>0</u> 0	<u>40</u> 40	<u>NM</u> NM	<u>47</u> 47	<u>0</u> 0	<u>47</u> 47	<u>47</u> 47	<u>47</u> 47	<u>47</u> 47	<u>93</u> 93	<u>NM</u> NM	<u>47</u> 47	<u>60</u> 60	<u>47</u> 47	<u>0</u> 0	<u>NM</u> NM
89611 (RW, .)	<u>0</u> 0	<u>37</u> 37	<u>NM</u> NM	<u>10</u> 10	<u>0</u> 0	<u>50</u> 50	<u>53</u> 53	<u>53</u> 53	<u>53</u> 53	<u>93</u> 93	<u>NM</u> NM	<u>53</u> 53	<u>60</u> 60	<u>53</u> 53	<u>0</u> 0	<u>NM</u> NM
Total Hobart: (2, 0)	<u>0</u> 0	<u>38</u> 38	<u>0 #</u> 0 #	<u>28</u> 28	<u>0</u> 0	<u>48</u> 48	<u>50</u> 50	<u>50</u> 50	<u>50</u> 50	<u>93</u> 93	<u>0 #</u> 0 #	<u>50</u> 50	<u>60</u> 60	<u>50</u> 50	<u>0</u> 0	<u>NM</u> NM
Marambio																
89055 (. , RW)	<u>0</u> 0	<u>0</u> 0	<u>NM</u> NM	<u>0</u> 0	<u>0</u> 0	<u>0</u> 0	<u>0</u> 0	<u>0</u> 0	<u>0</u> 0	<u>0</u> 0	<u>NM</u> NM	<u>0</u> 0	<u>0</u> 0	<u>0</u> 0	<u>0</u> 0	<u>NM</u> NM
Total Marambio: (0, 1)	<u>0</u> 0	<u>0</u> 0	<u>0 #</u> 0 #	<u>0</u> 0	<u>0</u> 0	<u>0</u> 0	<u>0</u> 0	<u>0</u> 0	<u>0</u> 0	<u>0</u> 0	<u>0 #</u> 0 #	<u>0</u> 0	<u>0</u> 0	<u>0</u> 0	<u>0</u> 0	<u>NM</u> NM
McMurdo																
89009 (RW, RW)	<u>0</u> 0	<u>80</u> 80	<u>NM</u> NM	<u>93</u> 97	<u>0</u> 0	<u>93</u> 93	<u>93</u> 97	<u>93</u> 97	<u>93</u> 97	<u>87</u> 87	<u>NM</u> NM	<u>93</u> 97	<u>++</u> ++	<u>93</u> 97	<u>0</u> 0	<u>NM</u> NM
89664 (RW, RW)	<u>0</u> 0	<u>63</u> 63	<u>NM</u> NM	<u>67</u> 67	<u>0</u> 0	<u>83</u> 83	<u>83</u> 83	<u>83</u> 83	<u>83</u> 83	<u>80</u> 83	<u>NM</u> NM	<u>83</u> 83	<u>100</u> 100	<u>83</u> 83	<u>0</u> 0	<u>NM</u> NM

NM Reply received, but not including the appropriate monitoring results.**++** Number of reports exceed the maximum number of reports expected to be received.**#** At least one of the stations was not monitored or/and number of reports exceed the maximum number of reports expected to be received.

RESULTS OF THE SPECIFIC MONITORING OF THE OPERATION OF THE WWW

Daily average (%) of TEMP reports Part D from Antarctic received at centres

Monitoring period: 1 to 15 January 2005

Collecting centre Station Observing programme at (00 & 12 UTC)	Daily average (%) of TEMP reports Part D received at 3 hours after observation time 12 hours															
	NMC Montevideo	NMC Santiago	NMC Seoul	RTH Beijing	RTH Brasilia	RTH Buenos Aires	RTH Exeter	RTH Melbourne	RTH Moscow	RTH New Delhi	RTH Norrkoping	RTH Offenbach	RTH Rome	RTH Tokyo	RTH Washington	RTH Wellington

2. Stations transmitting their reports to an Antarctic collecting centre

McMurdo

Total McMurdo: (2, 2)	<u>0</u> 0	<u>72</u> 72	<u>0 #</u> 0 #	<u>80</u> 82	<u>0</u> 0	<u>88</u> 88	<u>88</u> 90	<u>88</u> 90	<u>88</u> 90	<u>83</u> 85	<u>0 #</u> 0 #	<u>88</u> 90	<u>50 #</u> 50 #	<u>88</u> 90	<u>0</u> 0	<u>NM</u> NM
---------------------------	---------------	-----------------	-------------------	-----------------	---------------	-----------------	-----------------	-----------------	-----------------	-----------------	-------------------	-----------------	---------------------	-----------------	---------------	-----------------

Rothera

89062 (. , RW)	<u>0</u> 0	<u>47</u> 47	<u>NM</u> NM	<u>17</u> 27	<u>20</u> 27	<u>20</u> 20	<u>20</u> 27	<u>20</u> 27	<u>20</u> 27	<u>NM</u> NM	<u>0</u> 27	<u>20</u> 27	<u>33</u> 40	<u>20</u> 27	<u>7</u> 7	<u>NM</u> NM
Total Rothera: (0, 1)	<u>0</u> 0	<u>47</u> 47	<u>0 #</u> 0 #	<u>17</u> 27	<u>20</u> 27	<u>20</u> 20	<u>20</u> 27	<u>20</u> 27	<u>20</u> 27	<u>0 #</u> 0 #	<u>0</u> 27	<u>20</u> 27	<u>33</u> 40	<u>20</u> 27	<u>7</u> 7	<u>NM</u> NM

3. Stations transmitting their reports to a GTS centre located outside Antarctic

Darmstadt (EUMETSAT)

89002 (. , RW)	<u>0</u> 0	<u>37</u> 37	<u>NM</u> NM	<u>60</u> 60	<u>47</u> 47	<u>57</u> 57	<u>60</u> 60	<u>60</u> 60	<u>0</u> 0	<u>47</u> 47	<u>NM</u> NM	<u>60</u> 60	<u>63</u> 63	<u>60</u> 60	<u>0</u> 0	<u>NM</u> NM
89022 (. , RW)	<u>0</u> 0	<u>23</u> 23	<u>NM</u> NM	<u>33</u> 37	<u>33</u> 37	<u>33</u> 33	<u>37</u> 43	<u>33</u> 37	<u>33</u> 37	<u>17</u> 33	<u>27</u> 37	<u>33</u> 37	<u>33</u> 37	<u>33</u> 37	<u>0</u> 0	<u>NM</u> NM
89532 (RW, RW)	<u>0</u> 0	<u>47</u> 47	<u>NM</u> NM	<u>87</u> 87	<u>0</u> 0	<u>77</u> 77	<u>87</u> 87	<u>83</u> 83	<u>87</u> 87	<u>93</u> 93	<u>NM</u> NM	<u>87</u> 87	<u>87</u> 87	<u>87</u> 87	<u>0</u> 0	<u>NM</u> NM
Total Darmstadt (EU) (1, 3)	<u>0</u> 0	<u>36</u> 36	<u>0 #</u> 0 #	<u>60</u> 61	<u>27</u> 28	<u>56</u> 56	<u>61</u> 63	<u>59</u> 60	<u>40</u> 41	<u>52</u> 58	<u>9 #</u> 12 #	<u>60</u> 61	<u>61</u> 62	<u>60</u> 61	<u>0</u> 0	<u>NM</u> NM

St. Petersburg

89512 (RW, .)	<u>0</u> 0	<u>43</u> 43	<u>NM</u> NM	<u>43</u> 43	<u>0</u> 0	<u>43</u> 43	<u>43</u> 43	<u>43</u> 43	<u>43</u> 43	<u>43</u> 43	<u>NM</u> NM	<u>43</u> 43	<u>100</u> 100	<u>43</u> 43	<u>0</u> 0	<u>NM</u> NM
89592 (RW, .)	<u>0</u> 0	<u>0</u> 0	<u>NM</u> NM	<u>0</u> 0	<u>0</u> 0	<u>50</u> 50	<u>50</u> 50	<u>50</u> 50	<u>50</u> 50	<u>47</u> 47	<u>NM</u> NM	<u>50</u> 50	<u>100</u> 100	<u>50</u> 50	<u>0</u> 0	<u>NM</u> NM

NM Reply received, but not including the appropriate monitoring results.

++ Number of reports exceed the maximum number of reports expected to be received.

At least one of the stations was not monitored or/and number of reports exceed the maximum number of reports expected to be received.

RESULTS OF THE SPECIFIC MONITORING OF THE OPERATION OF THE WWW

Daily average (%) of TEMP reports Part D from Antarctic received at centres

Monitoring period: 1 to 15 January 2005

Collecting centre Station Observing programme at (00 & 12 UTC)	Daily average (%) of TEMP reports Part D received at 3 hours after observation time 12 hours															
	NMC Montevideo	NMC Santiago	NMC Seoul	RTH Beijing	RTH Brasilia	RTH Buenos Aires	RTH Exeter	RTH Melbourne	RTH Moscow	RTH New Delhi	RTH Norrkoping	RTH Offenbach	RTH Rome	RTH Tokyo	RTH Washington	RTH Wellington

3. Stations transmitting their reports to a GTS centre located outside Antarctic

St. Petersburg

Total St. Petersburg: (2, 0)	<u>0</u> 0	<u>22</u> 22	<u>0 #</u> 0 #	<u>22</u> 22	<u>0</u> 0	<u>47</u> 47	<u>47</u> 47	<u>47</u> 47	<u>47</u> 47	<u>45</u> 45	<u>0 #</u> 0 #	<u>47</u> 47	<u>100</u> 100	<u>47</u> 47	<u>0</u> 0	<u>NM</u> NM
----------------------------------	---------------	-----------------	-------------------	-----------------	---------------	-----------------	-----------------	-----------------	-----------------	-----------------	-------------------	-----------------	-------------------	-----------------	---------------	-----------------

Toulouse

89642 (RW, .)	<u>0</u> 0	<u>0</u> 0	<u>NM</u> NM	<u>33</u> 33	<u>0</u> 0	<u>0</u> 0	<u>33</u> 33	<u>33</u> 33	<u>33</u> 33	<u>3</u> 3	<u>NM</u> NM	<u>33</u> 33	<u>50</u> 50	<u>33</u> 33	<u>0</u> 0	<u>NM</u> NM
Total Toulouse: (1, 0)	<u>0</u> 0	<u>0</u> 0	<u>0 #</u> 0 #	<u>33</u> 33	<u>0</u> 0	<u>0</u> 0	<u>33</u> 33	<u>33</u> 33	<u>33</u> 33	<u>3</u> 3	<u>0 #</u> 0 #	<u>33</u> 33	<u>50</u> 50	<u>33</u> 33	<u>0</u> 0	<u>NM</u> NM

TOTAL ANTARCTIC

Total Antarctic: (9, 7)	<u>0</u> 0	<u>35</u> 35	<u>0 #</u> 0 #	<u>38</u> 40	<u>8</u> 8	<u>47</u> 47	<u>51</u> 52	<u>51</u> 52	<u>46</u> 47	<u>54 #</u> 55 #	<u>2 #</u> 5 #	<u>51</u> 52	<u>57 #</u> 58 #	<u>51</u> 52	<u>1</u> 1	<u>NM</u> NM
-----------------------------	---------------	-----------------	-------------------	-----------------	---------------	-----------------	-----------------	-----------------	-----------------	---------------------	-------------------	-----------------	---------------------	-----------------	---------------	-----------------

NM Reply received, but not including the appropriate monitoring results.

++ Number of reports exceed the maximum number of reports expected to be received.

At least one of the stations was not monitored or/and number of reports exceed the maximum number of reports expected to be received.

RESULTS OF THE SPECIFIC MONITORING OF THE OPERATION OF THE WWW

Daily average (%) of CLIMAT reports from Antarctic received at centres

Monitoring period: 1 to 15 January 2005

Collecting centre Station Implementation according to Volume A January 2005	Daily average (%) of CLIMAT reports received from <u>1 to 5 January 2005</u> 1 to 15 January 2005															
	NMC Montevideo	NMC Santiago	NMC Seoul	RTH Beijing	RTH Brasilia	RTH Buenos Aires	RTH Exeter	RTH Melbourne	RTH Moscow	RTH New Delhi	RTH Norrkoping	RTH Offenbach	RTH Rome	RTH Tokyo	RTH Washington	RTH Wellington
2. Stations transmitting their reports to an Antarctic collecting centre																
Davis																
89571 CLIMAT(CT)	$\frac{0}{0}$	$\frac{0}{0}$	$\frac{NM}{NM}$	$\frac{100}{100}$	$\frac{100}{100}$	$\frac{10}{10}$	$\frac{100}{100}$	$\frac{10}{10}$	$\frac{100}{100}$	$\frac{0}{0}$	$\frac{NM}{NM}$	$\frac{100}{100}$	$\frac{0}{0}$	$\frac{100}{100}$	$\frac{100}{100}$	$\frac{NM}{NM}$
89573	$\frac{0}{0}$	$\frac{0}{0}$	$\frac{NM}{NM}$	$\frac{0}{0}$	$\frac{0}{0}$	$\frac{0}{0}$	$\frac{0}{0}$	$\frac{0}{0}$	$\frac{0}{0}$	$\frac{0}{0}$	$\frac{NM}{NM}$	$\frac{0}{0}$	$\frac{0}{0}$	$\frac{0}{0}$	$\frac{0}{0}$	$\frac{NM}{NM}$
Total Davis: 1	$\frac{0}{0}$	$\frac{0}{0}$	$\frac{0 \#}{0 \#}$	$\frac{50}{50}$	$\frac{50}{50}$	$\frac{50}{50}$	$\frac{50}{50}$	$\frac{50}{50}$	$\frac{50}{50}$	$\frac{0}{0}$	$\frac{0 \#}{0 \#}$	$\frac{50}{50}$	$\frac{0}{0}$	$\frac{50}{50}$	$\frac{50}{50}$	$\frac{NM}{NM}$
Frei																
89054 CLIMAT(C)	$\frac{100}{100}$	$\frac{0}{0}$	$\frac{NM}{NM}$	$\frac{0}{0}$	$\frac{0}{0}$	$\frac{0}{0}$	$\frac{0}{0}$	$\frac{0}{0}$	$\frac{0}{0}$	$\frac{0}{0}$	$\frac{NM}{NM}$	$\frac{0}{0}$	$\frac{0}{0}$	$\frac{0}{0}$	$\frac{0}{0}$	$\frac{NM}{NM}$
89056 CLIMAT(C)	$\frac{0}{0}$	$\frac{0}{100}$	$\frac{NM}{NM}$	$\frac{100}{100}$	$\frac{0}{0}$	$\frac{0}{0}$	$\frac{0}{100}$	$\frac{0}{0}$	$\frac{0}{0}$	$\frac{0}{0}$	$\frac{NM}{NM}$	$\frac{0}{100}$	$\frac{0}{0}$	$\frac{0}{0}$	$\frac{0}{0}$	$\frac{NM}{NM}$
89058 CLIMAT(C)	$\frac{0}{0}$	$\frac{0}{0}$	$\frac{NM}{NM}$	$\frac{0}{0}$	$\frac{0}{0}$	$\frac{10}{10}$	$\frac{100}{100}$	$\frac{10}{10}$	$\frac{0}{0}$	$\frac{0}{0}$	$\frac{NM}{NM}$	$\frac{100}{100}$	$\frac{100}{100}$	$\frac{0}{0}$	$\frac{0}{0}$	$\frac{NM}{NM}$
89059 CLIMAT(C)	$\frac{0}{0}$	$\frac{0}{100}$	$\frac{NM}{NM}$	$\frac{100}{100}$	$\frac{0}{0}$	$\frac{0}{0}$	$\frac{0}{0}$	$\frac{0}{0}$	$\frac{0}{0}$	$\frac{0}{0}$	$\frac{NM}{NM}$	$\frac{0}{100}$	$\frac{0}{0}$	$\frac{0}{0}$	$\frac{0}{0}$	$\frac{NM}{NM}$
Total Frei: 4	$\frac{25}{25}$	$\frac{0}{50}$	$\frac{0 \#}{0 \#}$	$\frac{50}{50}$	$\frac{0}{0}$	$\frac{25}{25}$	$\frac{25}{50}$	$\frac{25}{25}$	$\frac{0}{0}$	$\frac{0}{0}$	$\frac{0 \#}{0 \#}$	$\frac{25}{75}$	$\frac{25}{25}$	$\frac{0}{0}$	$\frac{0}{0}$	$\frac{NM}{NM}$
Hobart																
89564 CLIMAT(CT)	$\frac{0}{0}$	$\frac{0}{0}$	$\frac{NM}{NM}$	$\frac{100}{100}$	$\frac{100}{100}$	$\frac{10}{10}$	$\frac{100}{100}$	$\frac{10}{10}$	$\frac{100}{100}$	$\frac{0}{0}$	$\frac{NM}{NM}$	$\frac{100}{100}$	$\frac{0}{0}$	$\frac{100}{100}$	$\frac{100}{100}$	$\frac{NM}{NM}$
89611 CLIMAT(CT)	$\frac{0}{0}$	$\frac{0}{0}$	$\frac{NM}{NM}$	$\frac{100}{100}$	$\frac{100}{100}$	$\frac{10}{10}$	$\frac{100}{100}$	$\frac{10}{10}$	$\frac{100}{100}$	$\frac{0}{0}$	$\frac{NM}{NM}$	$\frac{100}{100}$	$\frac{0}{0}$	$\frac{100}{100}$	$\frac{100}{100}$	$\frac{NM}{NM}$

NM = Reply received, but not including the appropriate monitoring results.

= At least one of the stations was not monitored.

RESULTS OF THE SPECIFIC MONITORING OF THE OPERATION OF THE WWW

Daily average (%) of CLIMAT reports from Antarctic received at centres

Monitoring period: 1 to 15 January 2005

Collecting centre Station Implementation according to Volume A January 2005	Daily average (%) of CLIMAT reports received from 1 to 5 January 2005 1 to 15 January 2005															
	NMC Montevideo	NMC Santiago	NMC Seoul	RTH Beijing	RTH Brasilia	RTH Buenos Aires	RTH Exeter	RTH Melbourne	RTH Moscow	RTH New Delhi	RTH Norrkoping	RTH Offenbach	RTH Rome	RTH Tokyo	RTH Washington	RTH Wellington
2. Stations transmitting their reports to an Antarctic collecting centre																
Hobart																
Total Hobart: 2	$\frac{0}{0}$	$\frac{0}{0}$	$\frac{0\#}{0\#}$	$\frac{100}{100}$	$\frac{100}{100}$	$\frac{10}{10}$	$\frac{100}{100}$	$\frac{10}{10}$	$\frac{100}{100}$	$\frac{0}{0}$	$\frac{0\#}{0\#}$	$\frac{100}{100}$	$\frac{0}{0}$	$\frac{100}{100}$	$\frac{100}{100}$	$\frac{NM}{NM}$
Marambio																
88963 CLIMAT(C)	$\frac{0}{100}$	$\frac{0}{0}$	$\frac{NM}{NM}$	$\frac{100}{100}$	$\frac{0}{0}$	$\frac{0}{10}$	$\frac{0}{100}$	$\frac{0}{10}$	$\frac{0}{100}$	$\frac{0}{0}$	$\frac{NM}{NM}$	$\frac{0}{100}$	$\frac{0}{0}$	$\frac{0}{100}$	$\frac{0}{100}$	$\frac{NM}{NM}$
88968 CLIMAT(C)	$\frac{0}{100}$	$\frac{0}{0}$	$\frac{NM}{NM}$	$\frac{100}{100}$	$\frac{0}{0}$	$\frac{0}{10}$	$\frac{0}{100}$	$\frac{0}{10}$	$\frac{0}{100}$	$\frac{0}{0}$	$\frac{NM}{NM}$	$\frac{0}{100}$	$\frac{0}{0}$	$\frac{0}{100}$	$\frac{0}{100}$	$\frac{NM}{NM}$
89034 CLIMAT(C)	$\frac{0}{100}$	$\frac{0}{0}$	$\frac{NM}{NM}$	$\frac{100}{100}$	$\frac{0}{0}$	$\frac{0}{10}$	$\frac{0}{100}$	$\frac{0}{10}$	$\frac{0}{100}$	$\frac{0}{0}$	$\frac{NM}{NM}$	$\frac{0}{100}$	$\frac{0}{100}$	$\frac{0}{100}$	$\frac{0}{100}$	$\frac{NM}{NM}$
89053 CLIMAT(C)	$\frac{0}{100}$	$\frac{0}{0}$	$\frac{NM}{NM}$	$\frac{100}{100}$	$\frac{0}{0}$	$\frac{0}{10}$	$\frac{0}{100}$	$\frac{0}{10}$	$\frac{0}{100}$	$\frac{0}{0}$	$\frac{NM}{NM}$	$\frac{0}{100}$	$\frac{0}{100}$	$\frac{0}{100}$	$\frac{0}{100}$	$\frac{NM}{NM}$
89055 CLIMAT(CT)	$\frac{0}{100}$	$\frac{0}{0}$	$\frac{NM}{NM}$	$\frac{100}{100}$	$\frac{0}{0}$	$\frac{0}{10}$	$\frac{0}{100}$	$\frac{0}{10}$	$\frac{0}{100}$	$\frac{0}{0}$	$\frac{NM}{NM}$	$\frac{0}{100}$	$\frac{0}{100}$	$\frac{0}{100}$	$\frac{0}{100}$	$\frac{NM}{NM}$
89066 CLIMAT(C)	$\frac{0}{100}$	$\frac{0}{0}$	$\frac{NM}{NM}$	$\frac{100}{100}$	$\frac{0}{0}$	$\frac{0}{10}$	$\frac{0}{100}$	$\frac{0}{10}$	$\frac{0}{100}$	$\frac{0}{0}$	$\frac{NM}{NM}$	$\frac{0}{100}$	$\frac{0}{100}$	$\frac{0}{100}$	$\frac{0}{100}$	$\frac{NM}{NM}$
Total Marambio: 6	$\frac{0}{100}$	$\frac{0}{0}$	$\frac{0\#}{0\#}$	$\frac{100}{100}$	$\frac{0}{0}$	$\frac{0}{10}$	$\frac{0}{100}$	$\frac{0}{10}$	$\frac{0}{100}$	$\frac{0\#}{0\#}$	$\frac{0\#}{0\#}$	$\frac{0}{100}$	$\frac{0}{67}$	$\frac{0}{100}$	$\frac{0}{100}$	$\frac{NM}{NM}$
McMurdo																
89009	$\frac{0}{0}$	$\frac{0}{0}$	$\frac{NM}{NM}$	$\frac{0}{0}$	$\frac{0}{0}$	$\frac{0}{0}$	$\frac{0}{0}$	$\frac{0}{0}$	$\frac{0}{0}$	$\frac{0}{0}$	$\frac{NM}{NM}$	$\frac{0}{0}$	$\frac{0}{0}$	$\frac{0}{0}$	$\frac{0}{0}$	$\frac{NM}{NM}$
89664	$\frac{0}{0}$	$\frac{0}{0}$	$\frac{NM}{NM}$	$\frac{0}{0}$	$\frac{0}{0}$	$\frac{0}{0}$	$\frac{0}{0}$	$\frac{0}{0}$	$\frac{0}{0}$	$\frac{0}{0}$	$\frac{NM}{NM}$	$\frac{0}{0}$	$\frac{0}{0}$	$\frac{0}{0}$	$\frac{0}{0}$	$\frac{NM}{NM}$

NM = Reply received, but not including the appropriate monitoring results.

= At least one of the stations was not monitored.

RESULTS OF THE SPECIFIC MONITORING OF THE OPERATION OF THE WWW

Daily average (%) of CLIMAT reports from Antarctic received at centres

Monitoring period: 1 to 15 January 2005

Collecting centre Station	Daily average (%) of CLIMAT reports received from <u>1 to 5 January 2005</u> 1 to 15 January 2005															
	NMC Montevideo	NMC Santiago	NMC Seoul	RTH Beijing	RTH Brasilia	RTH Buenos Aires	RTH Exeter	RTH Melbourne	RTH Moscow	RTH New Delhi	RTH Norrkoping	RTH Offenbach	RTH Rome	RTH Tokyo	RTH Washington	RTH Wellington
2. Stations transmitting their reports to an Antarctic collecting centre																
McMurdo																
Total McMurdo: 0	$\frac{0}{0}$	$\frac{0}{0}$	$\frac{0\#}{0\#}$	$\frac{0}{0}$	$\frac{0}{0}$	$\frac{0}{0}$	$\frac{0}{0}$	$\frac{0}{0}$	$\frac{0}{0}$	$\frac{0}{0}$	$\frac{0\#}{0\#}$	$\frac{0}{0}$	$\frac{0}{0}$	$\frac{0}{0}$	$\frac{0}{0}$	$\frac{NM}{NM}$
Rothera																
89062 CLIMAT(CT)	$\frac{0}{0}$	$\frac{0}{0}$	$\frac{NM}{NM}$	$\frac{0}{0}$	$\frac{0}{0}$	$\frac{0}{0}$	$\frac{0}{0}$	$\frac{0}{0}$	$\frac{0}{0}$	$\frac{0}{0}$	$\frac{NM}{NM}$	$\frac{100}{100}$	$\frac{0}{0}$	$\frac{0}{0}$	$\frac{0}{100}$	$\frac{NM}{NM}$
89063 CLIMAT(C)	$\frac{0}{0}$	$\frac{0}{0}$	$\frac{NM}{NM}$	$\frac{100}{100}$	$\frac{0}{0}$	$\frac{0}{0}$	$\frac{0}{0}$	$\frac{0}{10}$	$\frac{0}{0}$	$\frac{0}{0}$	$\frac{NM}{NM}$	$\frac{0}{100}$	$\frac{0}{0}$	$\frac{0}{100}$	$\frac{100}{100}$	$\frac{NM}{NM}$
89065 CLIMAT(C)	$\frac{0}{0}$	$\frac{0}{0}$	$\frac{NM}{NM}$	$\frac{0}{0}$	$\frac{0}{0}$	$\frac{0}{0}$	$\frac{0}{0}$	$\frac{0}{0}$	$\frac{0}{0}$	$\frac{0}{0}$	$\frac{NM}{NM}$	$\frac{0}{0}$	$\frac{0}{0}$	$\frac{0}{0}$	$\frac{0}{0}$	$\frac{NM}{NM}$
Total Rothera: 3	$\frac{0}{0}$	$\frac{0}{0}$	$\frac{0\#}{0\#}$	$\frac{33}{33}$	$\frac{0}{0}$	$\frac{0}{0}$	$\frac{0}{0}$	$\frac{0}{33}$	$\frac{0}{0}$	$\frac{0}{0}$	$\frac{0\#}{0\#}$	$\frac{33}{67}$	$\frac{0}{0}$	$\frac{0}{33}$	$\frac{33}{67}$	$\frac{NM}{NM}$
3. Stations transmitting their reports to a GTS centre located outside Antarctic																
Darmstadt (EUMETSAT)																
89002 CLIMAT(CT)	$\frac{100}{100}$	$\frac{0}{0}$	$\frac{NM}{NM}$	$\frac{100}{100}$	$\frac{100}{100}$	$\frac{10}{10}$	$\frac{100}{100}$	$\frac{10}{10}$	$\frac{100}{100}$	$\frac{0}{0}$	$\frac{NM}{NM}$	$\frac{100}{100}$	$\frac{0}{0}$	$\frac{100}{100}$	$\frac{100}{100}$	$\frac{NM}{NM}$
89022 CLIMAT(CT)	$\frac{0}{100}$	$\frac{0}{0}$	$\frac{NM}{NM}$	$\frac{100}{100}$	$\frac{0}{100}$	$\frac{0}{10}$	$\frac{100}{100}$	$\frac{0}{0}$	$\frac{0}{100}$	$\frac{0}{0}$	$\frac{NM}{NM}$	$\frac{0}{100}$	$\frac{0}{100}$	$\frac{100}{100}$	$\frac{0}{100}$	$\frac{NM}{NM}$
89532 CLIMAT(CT)	$\frac{100}{100}$	$\frac{0}{0}$	$\frac{NM}{NM}$	$\frac{100}{100}$	$\frac{100}{100}$	$\frac{10}{10}$	$\frac{100}{100}$	$\frac{10}{10}$	$\frac{100}{100}$	$\frac{0}{0}$	$\frac{NM}{NM}$	$\frac{100}{100}$	$\frac{100}{100}$	$\frac{100}{100}$	$\frac{100}{100}$	$\frac{NM}{NM}$
Total Darmstadt (EUMETSAT): 3	$\frac{67}{100}$	$\frac{0}{0}$	$\frac{0\#}{0\#}$	$\frac{100}{100}$	$\frac{67}{100}$	$\frac{67}{10}$	$\frac{100}{100}$	$\frac{67}{67}$	$\frac{67}{100}$	$\frac{67}{100}$	$\frac{0}{0\#}$	$\frac{67}{100}$	$\frac{33}{67}$	$\frac{100}{100}$	$\frac{67}{100}$	$\frac{NM}{NM}$

NM = Reply received, but not including the appropriate monitoring results.

= At least one of the stations was not monitored.

RESULTS OF THE SPECIFIC MONITORING OF THE OPERATION OF THE WWW

Daily average (%) of CLIMAT reports from Antarctic received at centres

Monitoring period: 1 to 15 January 2005

Collecting centre Station Implementation according to Volume A January 2005	Daily average (%) of CLIMAT reports received from <u>1 to 5 January 2005</u> 1 to 15 January 2005																
	NMC Montevideo	NMC Santiago	NMC Seoul	RTH Beijing	RTH Brasilia	RTH Buenos Aires	RTH Exeter	RTH Melbourne	RTH Moscow	RTH New Delhi	RTH Norrkoping	RTH Offenbach	RTH Rome	RTH Tokyo	RTH Washington	RTH Wellington	
3. Stations transmitting their reports to a GTS centre located outside Antarctic																	
<i>New Delhi</i>																	
89514	$\frac{0}{0}$	$\frac{0}{0}$	$\frac{NM}{NM}$	$\frac{0}{0}$	$\frac{0}{0}$	$\frac{0}{0}$	$\frac{0}{0}$	$\frac{0}{0}$	$\frac{0}{0}$	$\frac{0}{0}$	$\frac{NM}{NM}$	$\frac{0}{0}$	$\frac{0}{0}$	$\frac{0}{0}$	$\frac{0}{0}$	$\frac{NM}{NM}$	
Total New Delhi: 0	$\frac{0}{0}$	$\frac{0}{0}$	$\frac{0\#}{0\#}$	$\frac{0}{0}$	$\frac{0}{0}$	$\frac{0}{0}$	$\frac{0}{0}$	$\frac{0}{0}$	$\frac{0}{0}$	$\frac{0}{0}$	$\frac{0\#}{0\#}$	$\frac{0}{0}$	$\frac{0}{0}$	$\frac{0}{0}$	$\frac{0}{0}$	$\frac{NM}{NM}$	
<i>St. Petersburg</i>																	
89050 CLIMAT(C)	$\frac{0}{0}$	$\frac{0}{0}$	$\frac{NM}{NM}$	$\frac{100}{100}$	$\frac{0}{0}$	$\frac{0}{0}$	$\frac{0}{0}$	$\frac{10}{10}$	$\frac{100}{100}$	$\frac{0}{0}$	$\frac{NM}{NM}$	$\frac{0}{0}$	$\frac{0}{0}$	$\frac{0}{0}$	$\frac{0}{0}$	$\frac{NM}{NM}$	
89512 CLIMAT(CT)	$\frac{0}{0}$	$\frac{0}{0}$	$\frac{NM}{NM}$	$\frac{100}{100}$	$\frac{0}{0}$	$\frac{0}{0}$	$\frac{0}{0}$	$\frac{10}{10}$	$\frac{100}{100}$	$\frac{0}{0}$	$\frac{NM}{NM}$	$\frac{0}{0}$	$\frac{0}{0}$	$\frac{0}{0}$	$\frac{0}{0}$	$\frac{NM}{NM}$	
89574	$\frac{0}{0}$	$\frac{0}{0}$	$\frac{NM}{NM}$	$\frac{100}{100}$	$\frac{0}{0}$	$\frac{0}{0}$	$\frac{0}{0}$	$\frac{10}{10}$	$\frac{100}{100}$	$\frac{0}{0}$	$\frac{NM}{NM}$	$\frac{0}{0}$	$\frac{0}{0}$	$\frac{0}{0}$	$\frac{0}{0}$	$\frac{NM}{NM}$	
89592 CLIMAT(CT)	$\frac{0}{0}$	$\frac{0}{0}$	$\frac{NM}{NM}$	$\frac{100}{100}$	$\frac{0}{0}$	$\frac{0}{0}$	$\frac{0}{0}$	$\frac{10}{10}$	$\frac{100}{100}$	$\frac{0}{0}$	$\frac{NM}{NM}$	$\frac{0}{0}$	$\frac{0}{0}$	$\frac{0}{0}$	$\frac{0}{0}$	$\frac{NM}{NM}$	
89606 CLIMAT(C)	$\frac{0}{0}$	$\frac{0}{0}$	$\frac{NM}{NM}$	$\frac{0}{0}$	$\frac{0}{0}$	$\frac{0}{0}$	$\frac{0}{0}$	$\frac{0}{0}$	$\frac{0}{0}$	$\frac{0}{0}$	$\frac{NM}{NM}$	$\frac{0}{0}$	$\frac{0}{0}$	$\frac{0}{0}$	$\frac{0}{0}$	$\frac{NM}{NM}$	
Total St. Petersburg: 4	$\frac{0}{0}$	$\frac{0}{0}$	$\frac{0\#}{0\#}$	$\frac{80}{80}$	$\frac{0}{0}$	$\frac{0}{0}$	$\frac{0}{0}$	$\frac{80}{80}$	$\frac{80}{80}$	$\frac{0}{0}$	$\frac{0\#}{0\#}$	$\frac{0}{0}$	$\frac{0}{0}$	$\frac{0}{0}$	$\frac{0}{0}$	$\frac{NM}{NM}$	
<i>Toulouse</i>																	
89642 CLIMAT(CT)	$\frac{0}{0}$	$\frac{0}{0}$	$\frac{NM}{NM}$	$\frac{0}{0}$	$\frac{0}{0}$	$\frac{0}{0}$	$\frac{0}{0}$	$\frac{0}{0}$	$\frac{0}{0}$	$\frac{0}{0}$	$\frac{NM}{NM}$	$\frac{0}{0}$	$\frac{0}{0}$	$\frac{0}{0}$	$\frac{0}{0}$	$\frac{NM}{NM}$	
Total Toulouse: 1	$\frac{0}{0}$	$\frac{0}{0}$	$\frac{0\#}{0\#}$	$\frac{0}{0}$	$\frac{0}{0}$	$\frac{0}{0}$	$\frac{0}{0}$	$\frac{0}{0}$	$\frac{0}{0}$	$\frac{0}{0}$	$\frac{0\#}{0\#}$	$\frac{0}{0}$	$\frac{0}{0}$	$\frac{0}{0}$	$\frac{0}{0}$	$\frac{NM}{NM}$	

NM = Reply received, but not including the appropriate monitoring results.

= At least one of the stations was not monitored.

RESULTS OF THE SPECIFIC MONITORING OF THE OPERATION OF THE WWW

Daily average (%) of CLIMAT reports from Antarctic received at centres

Monitoring period: 1 to 15 January 2005

Collecting centre Station Implementation according to Volume A January 2005	Daily average (%) of CLIMAT reports received from <u>1 to 5 January 2005</u> 1 to 15 January 2005															
	NMC Montevideo	NMC Santiago	NMC Seoul	RTH Beijing	RTH Brasilia	RTH Buenos Aires	RTH Exeter	RTH Melbourne	RTH Moscow	RTH New Delhi	RTH Norrkoping	RTH Offenbach	RTH Rome	RTH Tokyo	RTH Washington	RTH Wellington
3. Stations transmitting their reports to a GTS centre located outside Antarctic																
TOTAL ANTARCTIC																
Total Antarctic: 24	<u>10</u> 34	<u>0</u> 7	<u>0 #</u> 0 #	<u>66</u> 66	<u>17</u> 21	<u>21</u> 45	<u>24</u> 48	<u>34</u> 59	<u>31</u> 55	<u>0 #</u> 0 #	<u>0 #</u> 0 #	<u>24</u> 59	<u>7</u> 24	<u>21</u> 45	<u>21</u> 48	<u>NM</u> NM

NM = Reply received, but not including the appropriate monitoring results.

= At least one of the stations was not monitored.

RESULTS OF THE SPECIFIC MONITORING OF THE OPERATION OF THE WWW

Daily average (%) of CLIMAT TEMP reports from Antarctic received at centres

Monitoring period: 1 to 15 January 2005

Collecting centre Station	Daily average (%) of CLIMAT TEMP reports received from <u>1 to 5 January 2005</u> 1 to 15 January 2005															
	NMC Montevideo	NMC Santiago	NMC Seoul	RTH Beijing	RTH Brasilia	RTH Buenos Aires	RTH Exeter	RTH Melbourne	RTH Moscow	RTH New Delhi	RTH Norkoping	RTH Offenbach	RTH Rome	RTH Tokyo	RTH Washington	RTH Wellington
2. Stations transmitting their reports to an Antarctic collecting centre																
Davis																
89571 CLIMAT(CT)	$\frac{0}{0}$	$\frac{0}{0}$	$\frac{NM}{NM}$	$\frac{100}{100}$	$\frac{0}{0}$	$\frac{10}{10}$	$\frac{100}{100}$	$\frac{10}{10}$	$\frac{100}{100}$	$\frac{0}{0}$	$\frac{NM}{NM}$	$\frac{100}{100}$	$\frac{0}{0}$	$\frac{100}{100}$	$\frac{100}{100}$	$\frac{NM}{NM}$
Total Davis: 1	$\frac{0}{0}$	$\frac{0}{0}$	$\frac{0\#}{0\#}$	$\frac{100}{100}$	$\frac{0}{0}$	$\frac{10}{10}$	$\frac{100}{100}$	$\frac{10}{10}$	$\frac{100}{100}$	$\frac{0}{0}$	$\frac{0\#}{0\#}$	$\frac{100}{100}$	$\frac{0}{0}$	$\frac{100}{100}$	$\frac{100}{100}$	$\frac{NM}{NM}$
Hobart																
89564 CLIMAT(CT)	$\frac{0}{0}$	$\frac{0}{0}$	$\frac{NM}{NM}$	$\frac{100}{100}$	$\frac{0}{0}$	$\frac{10}{10}$	$\frac{100}{100}$	$\frac{10}{10}$	$\frac{100}{100}$	$\frac{0}{0}$	$\frac{NM}{NM}$	$\frac{100}{100}$	$\frac{0}{0}$	$\frac{100}{100}$	$\frac{100}{100}$	$\frac{NM}{NM}$
89611 CLIMAT(CT)	$\frac{0}{0}$	$\frac{0}{0}$	$\frac{NM}{NM}$	$\frac{100}{100}$	$\frac{0}{0}$	$\frac{10}{10}$	$\frac{100}{100}$	$\frac{10}{10}$	$\frac{100}{100}$	$\frac{0}{0}$	$\frac{NM}{NM}$	$\frac{100}{100}$	$\frac{0}{0}$	$\frac{100}{100}$	$\frac{100}{100}$	$\frac{NM}{NM}$
Total Hobart: 2	$\frac{0}{0}$	$\frac{0}{0}$	$\frac{0\#}{0\#}$	$\frac{100}{100}$	$\frac{0}{0}$	$\frac{10}{10}$	$\frac{100}{100}$	$\frac{10}{10}$	$\frac{100}{100}$	$\frac{0}{0}$	$\frac{0\#}{0\#}$	$\frac{100}{100}$	$\frac{0}{0}$	$\frac{100}{100}$	$\frac{100}{100}$	$\frac{NM}{NM}$
Marambio																
89055 CLIMAT(CT)	$\frac{0}{0}$	$\frac{0}{0}$	$\frac{NM}{NM}$	$\frac{0}{0}$	$\frac{0}{0}$	$\frac{0}{0}$	$\frac{0}{0}$	$\frac{0}{10}$	$\frac{0}{0}$	$\frac{0}{0}$	$\frac{NM}{NM}$	$\frac{0}{0}$	$\frac{0}{0}$	$\frac{0}{0}$	$\frac{0}{0}$	$\frac{NM}{NM}$
Total Marambio: 1	$\frac{0}{0}$	$\frac{0}{0}$	$\frac{0\#}{0\#}$	$\frac{0}{0}$	$\frac{0}{0}$	$\frac{0}{0}$	$\frac{0}{0}$	$\frac{0}{10}$	$\frac{0}{0}$	$\frac{0}{0}$	$\frac{0\#}{0\#}$	$\frac{0}{0}$	$\frac{0}{0}$	$\frac{0}{0}$	$\frac{0}{0}$	$\frac{NM}{NM}$
McMurdo																
89009	$\frac{0}{0}$	$\frac{0}{0}$	$\frac{NM}{NM}$	$\frac{100}{100}$	$\frac{0}{0}$	$\frac{0}{0}$	$\frac{100}{100}$	$\frac{10}{10}$	$\frac{0}{0}$	$\frac{0}{0}$	$\frac{NM}{NM}$	$\frac{100}{100}$	$\frac{0}{0}$	$\frac{100}{100}$	$\frac{0}{0}$	$\frac{NM}{NM}$
89664	$\frac{0}{0}$	$\frac{0}{0}$	$\frac{NM}{NM}$	$\frac{0}{0}$	$\frac{0}{0}$	$\frac{0}{0}$	$\frac{0}{0}$	$\frac{NM}{NM}$	$\frac{0}{0}$	$\frac{0}{0}$	$\frac{NM}{NM}$	$\frac{0}{0}$	$\frac{0}{0}$	$\frac{0}{0}$	$\frac{0}{0}$	$\frac{NM}{NM}$

NM = Reply received, but not including the appropriate monitoring results.

= At least one of the stations was not monitored.

RESULTS OF THE SPECIFIC MONITORING OF THE OPERATION OF THE WWW

Daily average (%) of CLIMAT TEMP reports from Antarctic received at centres

Monitoring period: 1 to 15 January 2005

Collecting centre Station Implementation according to Volume A January 2005	Daily average (%) of CLIMAT TEMP reports received from <u>1 to 5 January 2005</u> 1 to 15 January 2005															
	NMC Montevideo	NMC Santiago	NMC Seoul	RTH Beijing	RTH Brasilia	RTH Buenos Aires	RTH Exeter	RTH Melbourne	RTH Moscow	RTH New Delhi	RTH Norrkoping	RTH Offenbach	RTH Rome	RTH Tokyo	RTH Washington	RTH Wellington
2. Stations transmitting their reports to an Antarctic collecting centre																
McMurdo																
Total McMurdo: 0	$\frac{0}{0}$	$\frac{0}{0}$	$\frac{0\#}{0\#}$	$\frac{50}{50}$	$\frac{0}{0}$	$\frac{0}{0}$	$\frac{50}{50}$	$\frac{50}{50}$	$\frac{0}{0}$	$\frac{0}{0}$	$\frac{0\#}{0\#}$	$\frac{50}{50}$	$\frac{0}{0}$	$\frac{50}{50}$	$\frac{0}{0}$	$\frac{NM}{NM}$
Rothera																
89062 CLIMAT(CT)	$\frac{0}{0}$	$\frac{0}{0}$	$\frac{NM}{NM}$	$\frac{100}{100}$	$\frac{0}{0}$	$\frac{0}{0}$	$\frac{0}{0}$	$\frac{10}{10}$	$\frac{0}{0}$	$\frac{0}{0}$	$\frac{NM}{NM}$	$\frac{100}{100}$	$\frac{0}{0}$	$\frac{100}{100}$	$\frac{0}{100}$	$\frac{NM}{NM}$
Total Rothera: 1	$\frac{0}{0}$	$\frac{0}{0}$	$\frac{0\#}{0\#}$	$\frac{100}{100}$	$\frac{0}{0}$	$\frac{0}{0}$	$\frac{0}{0}$	$\frac{10}{10}$	$\frac{0}{0}$	$\frac{0}{0}$	$\frac{0\#}{0\#}$	$\frac{100}{100}$	$\frac{0}{0}$	$\frac{100}{100}$	$\frac{0}{100}$	$\frac{NM}{NM}$
3. Stations transmitting their reports to a GTS centre located outside Antarctic																
Darmstadt (EUMETSAT)																
89002 CLIMAT(CT)	$\frac{0}{0}$	$\frac{0}{0}$	$\frac{NM}{NM}$	$\frac{100}{100}$	$\frac{0}{0}$	$\frac{10}{10}$	$\frac{100}{100}$	$\frac{10}{10}$	$\frac{100}{100}$	$\frac{100}{100}$	$\frac{NM}{NM}$	$\frac{100}{100}$	$\frac{0}{0}$	$\frac{100}{100}$	$\frac{100}{100}$	$\frac{NM}{NM}$
89022 CLIMAT(CT)	$\frac{0}{0}$	$\frac{0}{0}$	$\frac{NM}{NM}$	$\frac{0}{0}$	$\frac{0}{0}$	$\frac{10}{10}$	$\frac{100}{100}$	$\frac{0}{0}$	$\frac{0}{0}$	$\frac{0}{0}$	$\frac{NM}{NM}$	$\frac{100}{100}$	$\frac{0}{0}$	$\frac{0}{0}$	$\frac{100}{100}$	$\frac{NM}{NM}$
89532 CLIMAT(CT)	$\frac{0}{0}$	$\frac{0}{0}$	$\frac{NM}{NM}$	$\frac{100}{100}$	$\frac{0}{0}$	$\frac{10}{10}$	$\frac{100}{100}$	$\frac{10}{10}$	$\frac{0}{0}$	$\frac{0}{0}$	$\frac{NM}{NM}$	$\frac{100}{100}$	$\frac{0}{0}$	$\frac{100}{100}$	$\frac{100}{100}$	$\frac{NM}{NM}$
Total Darmstadt (EUMETSAT): 3	$\frac{0}{0}$	$\frac{0}{0}$	$\frac{0\#}{0\#}$	$\frac{67}{67}$	$\frac{0}{0}$	$\frac{10}{10}$	$\frac{100}{100}$	$\frac{67}{67}$	$\frac{33}{33}$	$\frac{33}{33}$	$\frac{0\#}{0\#}$	$\frac{100}{100}$	$\frac{0}{0}$	$\frac{67}{67}$	$\frac{100}{100}$	$\frac{NM}{NM}$
St. Petersburg																
89512 CLIMAT(CT)	$\frac{0}{0}$	$\frac{0}{100}$	$\frac{NM}{NM}$	$\frac{100}{100}$	$\frac{0}{0}$	$\frac{10}{10}$	$\frac{100}{100}$	$\frac{10}{10}$	$\frac{100}{100}$	$\frac{0}{0}$	$\frac{NM}{NM}$	$\frac{100}{100}$	$\frac{100}{100}$	$\frac{100}{100}$	$\frac{100}{100}$	$\frac{NM}{NM}$

NM = Reply received, but not including the appropriate monitoring results.

= At least one of the stations was not monitored.

RESULTS OF THE SPECIFIC MONITORING OF THE OPERATION OF THE WWW

Daily average (%) of CLIMAT TEMP reports from Antarctic received at centres

Monitoring period: 1 to 15 January 2005

Collecting centre Station Implementation according to Volume A January 2005	Daily average (%) of CLIMAT TEMP reports received from <u>1 to 5 January 2005</u> 1 to 15 January 2005															
	NMC Montevideo	NMC Santiago	NMC Seoul	RTH Beijing	RTH Brasilia	RTH Buenos Aires	RTH Exeter	RTH Melbourne	RTH Moscow	RTH New Delhi	RTH Norrkoping	RTH Offenbach	RTH Rome	RTH Tokyo	RTH Washington	RTH Wellington
3. Stations transmitting their reports to a GTS centre located outside Antarctic																
St. Petersburg																
89592 CLIMAT(CT)	$\frac{0}{0}$	$\frac{0}{100}$	$\frac{NM}{NM}$	$\frac{100}{100}$	$\frac{0}{0}$	$\frac{10}{10}$	$\frac{100}{100}$	$\frac{10}{10}$	$\frac{100}{100}$	$\frac{0}{0}$	$\frac{NM}{NM}$	$\frac{100}{100}$	$\frac{100}{100}$	$\frac{100}{100}$	$\frac{100}{100}$	$\frac{NM}{NM}$
Total St. Petersburg: 2	$\frac{0}{0}$	$\frac{0}{100}$	$\frac{0\#}{0\#}$	$\frac{100}{100}$	$\frac{0}{0}$	$\frac{10}{10}$	$\frac{100}{100}$	$\frac{10}{10}$	$\frac{100}{100}$	$\frac{0}{0}$	$\frac{0\#}{0\#}$	$\frac{100}{100}$	$\frac{100}{100}$	$\frac{100}{100}$	$\frac{100}{100}$	$\frac{NM}{NM}$
Toulouse																
89642 CLIMAT(CT)	$\frac{0}{0}$	$\frac{0}{0}$	$\frac{NM}{NM}$	$\frac{0}{0}$	$\frac{0}{0}$	$\frac{0}{0}$	$\frac{0}{0}$	$\frac{0}{0}$	$\frac{0}{0}$	$\frac{0}{0}$	$\frac{NM}{NM}$	$\frac{0}{0}$	$\frac{0}{0}$	$\frac{0}{0}$	$\frac{0}{0}$	$\frac{NM}{NM}$
Total Toulouse: 1	$\frac{0}{0}$	$\frac{0}{0}$	$\frac{0\#}{0\#}$	$\frac{0}{0}$	$\frac{0}{0}$	$\frac{0}{0}$	$\frac{0}{0}$	$\frac{0}{0}$	$\frac{0}{0}$	$\frac{0}{0}$	$\frac{0\#}{0\#}$	$\frac{0}{0}$	$\frac{0}{0}$	$\frac{0}{0}$	$\frac{0}{0}$	$\frac{NM}{NM}$
TOTAL ANTARCTIC																
Total Antarctic: 11	$\frac{0}{0}$	$\frac{0}{15}$	$\frac{0\#}{0\#}$	$\frac{69}{69}$	$\frac{0}{0}$	$\frac{62}{62}$	$\frac{69}{69}$	$\frac{69}{77}$	$\frac{46}{46}$	$\frac{8}{8}$	$\frac{0\#}{0\#}$	$\frac{77}{77}$	$\frac{15}{15}$	$\frac{69}{69}$	$\frac{62}{69}$	$\frac{NM}{NM}$

NM = Reply received, but not including the appropriate monitoring results.

= At least one of the stations was not monitored.

