

CMA WIS Prototype

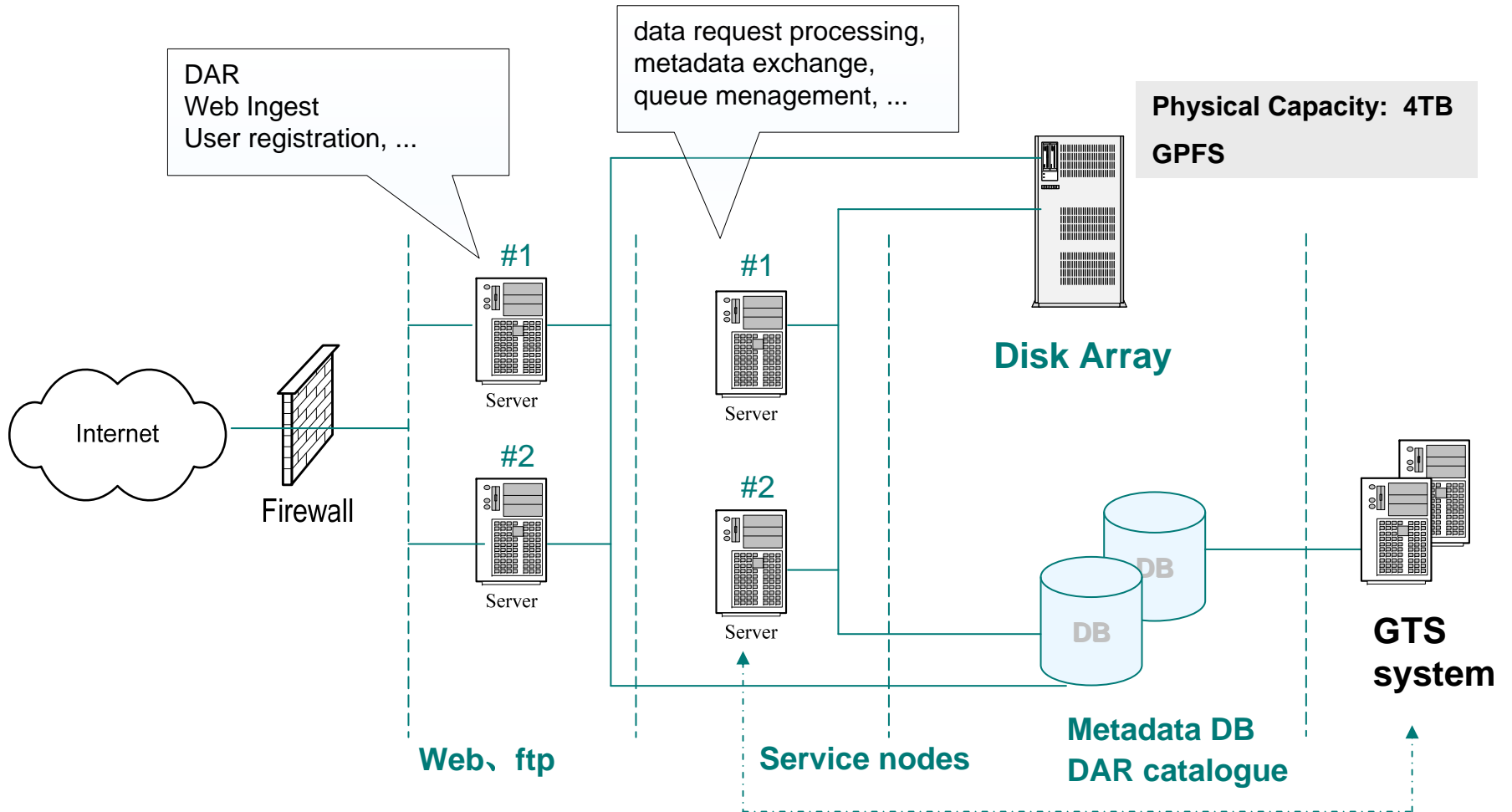
CMA's WIS prototype

Main Functions:

- ❖ data discovery
- ❖ data retrieval
- ❖ data access

- ❖ GTS data ingest

Platform



Running environment

Operating system	SUSE Enterprise Server
Web server	Apache 2
J2EE server	Apache Tomcat 5.5
Database	Oracle 10g
JDK	SUN JDK 1.4
Third party libraries	unixODBC、POSIX、STL、ApacheAxis

[Data Request](#)[Data Ingest](#)[New Dataset](#)[Service Statistics](#)

WMO Information System

The WMO Information system (WIS) is be WMO Members' ability to collect and disseminate core information system utilized by WMO WMO and supported programmes associated related natural disasters. It is being built up System of WMO's World Weather Watch feasible for all Members.

Beijing WIS Portal

Beijing WIS portal is being designed to provide WIS data. Currently, it provides the service observations and CMA's observation data

Data Request

Request of data by registered users.

Data Ingest

Input of GTS bulletins by registered users

Metadata Upload

Upload of the metadata for WIS data and

Service Statistics

Interface for inquiring about the process status requests.

User Management

Accept the user register , and check user s

Message Board

Receive messages from users, and exchange the provided data among users.

User Registry

User Id* Can the use of English letters, numbers

Password* Less than 10 characters

Retype Password* Please repeat input to the password above

User Name* Can the use of English letters, numbers

Question

Answer

City

Work Organization* Less than 100 characters

Organization Address* Less than 100 characters

Zip Code

Telephone Can the use of English letters, numbers

Selectable Datasets All the Datasets

CN_GOV_CMA_OBSERVATIONS_CLIMAT_GLOBAL [show metadata](#)

CN_GOV_CMA_OBSERVATIONS_CLIMAT_TEMP_GLOBAL [show metadata](#)

CN_GOV_CMA_OBSERVATIONS_SYNOP_GLOBAL [show metadata](#)

CN_GOV_CMA_OBSERVATIONS_TEMP_GLOBAL [show metadata](#)

CN_GOV_CMA_SATELLITE_FY_DATA [show metadata](#)

CN_GOV_CMA_NWP_T213_DATA [show metadata](#)

CN_GOV_CMA_THORPEX_TIGGE [show metadata](#)

JP-JMA-TOKYO_SATAID_IR1_NC [show metadata](#)

Interoperation between CMA and JMA

- Metadata exchange
- Remote data request

Metadata exchange

- protocols and mechanisms:
 - FTP
 - GET <PULL>
 - HTTP
 - Web
 - HTTP
 - OAI-PMH

Metadata exchange

- Implement methods:
 - Automatic process via FTP/HTTP/OAI
 - Manual upload via web

The screenshot shows the 'Beijing WIS Portal' interface for metadata upload. The header includes the portal logo and navigation links: Home, Search, Directory, Data, Service, Metadata Upload, Message board, System Management, User Registry, and User Info. The main content area is titled 'Home > MetadataUpload' and features a 'display uploaded xml file' link. Below this, there are four rows for uploading XML files, each with a text input field and a '浏览...' (Browse...) button. To the right of these fields, there is a 'please select template marker' label, a 'local' dropdown menu, and an 'Upload' button. The footer of the page reads 'National Meteorological Information Center'.

Beijing WIS Portal

Home | Search | Directory | Data | Service | Metadata Upload | Message board | System Management | User Registry | User Info

Home > MetadataUpload

display uploaded xml file

xml file 1 浏览...

xml file 2 浏览...

xml file 3 浏览...

xml file 4 浏览...

please select template marker

local

Upload

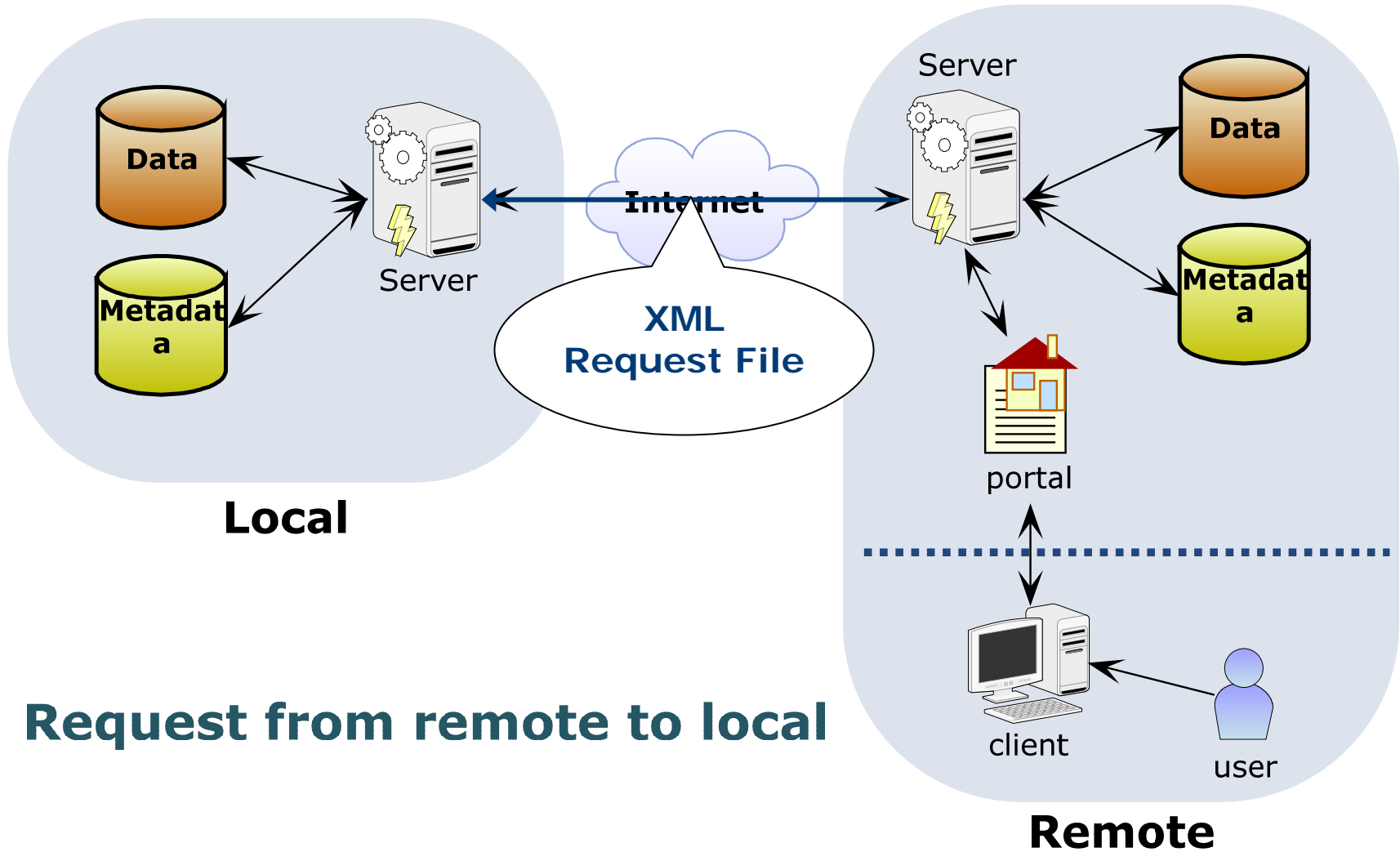
National Meteorological Information Center

Request Process

- Request from remote to local
- Request from local to remote
- Request from local to local

- Interface between CMA and JMA
 - Request file (filename, format)
 - Result Description File (filename, format)
 - Result data file (filename)

Request Process



Request File

- File Format

 - XML document

- File Naming

 - yyymmddhhmmss-random number-
the forth field of IP address-center
code for request sponsor (CCCC).xml

 - eg. 20071120051918-0793-56-
BABJ.xml

Request File

- File Content

- Description code of request data set
- Validation information
- Request condition of request data set

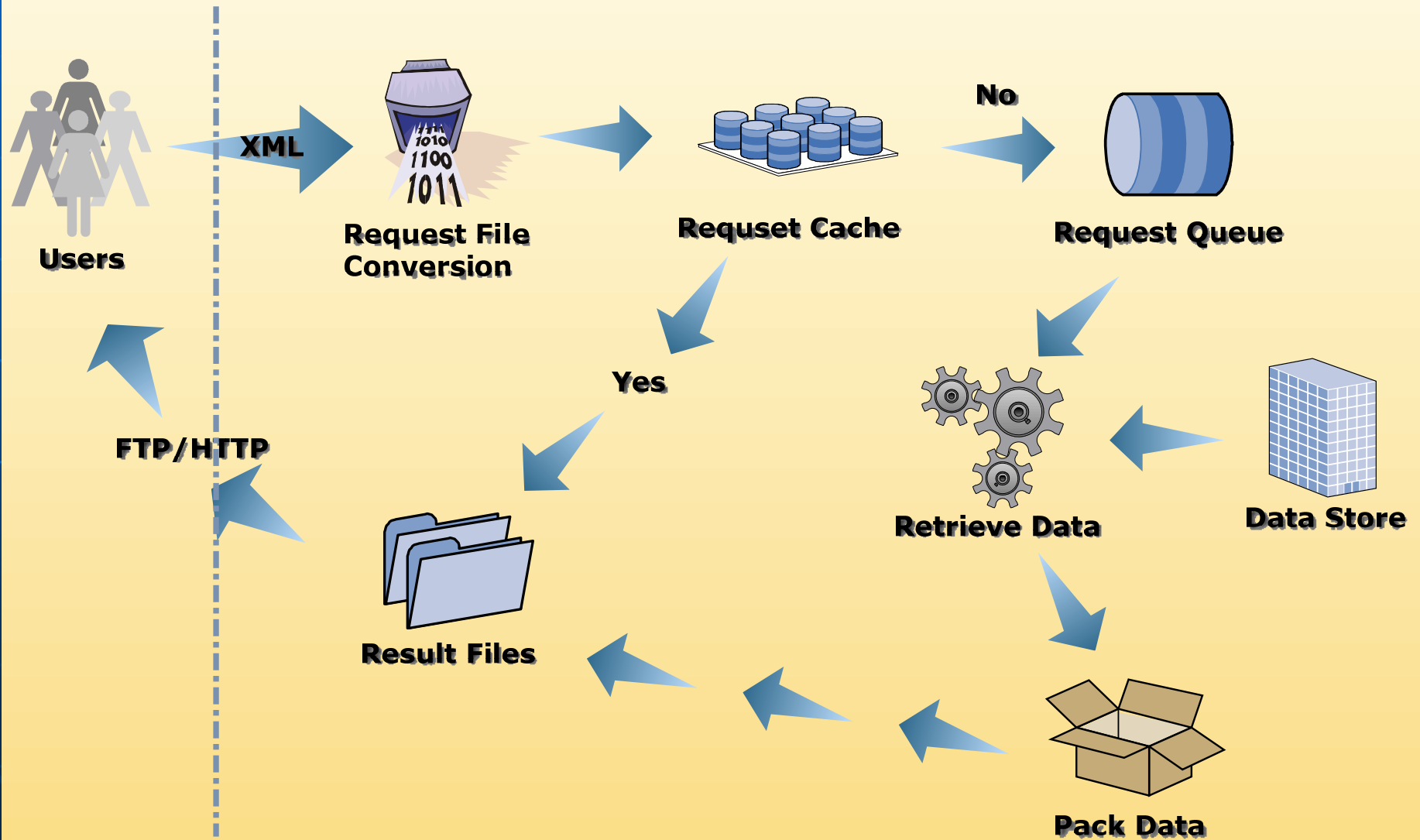
Request File

20071120051918-0793-56-BABJ.xml

```
<?xml version="1.0" encoding="utf-8"?>
<request>
  <dataset>JMA_SATAID_IR1nc</dataset>
  <local>
    <downloadmode>http</downloadmode>
    <usrid>test</usrid>
    <endpoint>http://wisportal.cma.gov.cn/servlet/AxisServlet</endpoint>
    <random>1426309776</random>
  </local>
  <condition>
    <date>
      <startDate>2007-11-15</startDate>
      <endDate>2007-11-16</endDate>
    </date>
    <datatimes>
      <value>00</value>
    </datatimes>
    <ii>
      <value>IR</value>
    </ii>
    <scccc>
      <value>RJTD</value>
    </scccc>
  </condition>
</request>
```

Request Process

Request Process From Remote To Local



Request Result

- Description file of request result
 - File naming
 - Same as the request filename excluding the extension
 - File content
 - Contain several lines mainly:
 - The first line includes description code of request result;
 - The second line includes the number of result data files;
 - From the third line, it lists result filename if the request result files have been retrieved;
- Request Result data file
 - File naming
 - Same as the request filename, but the filename extension is replaced by compress type
 - File format
 - Compress File

Result Description File

2007

-BABJ

Process result identifier of request:

0: process successfully

1: there is no response data

2: the response data is too large

0

The number of result data files

3

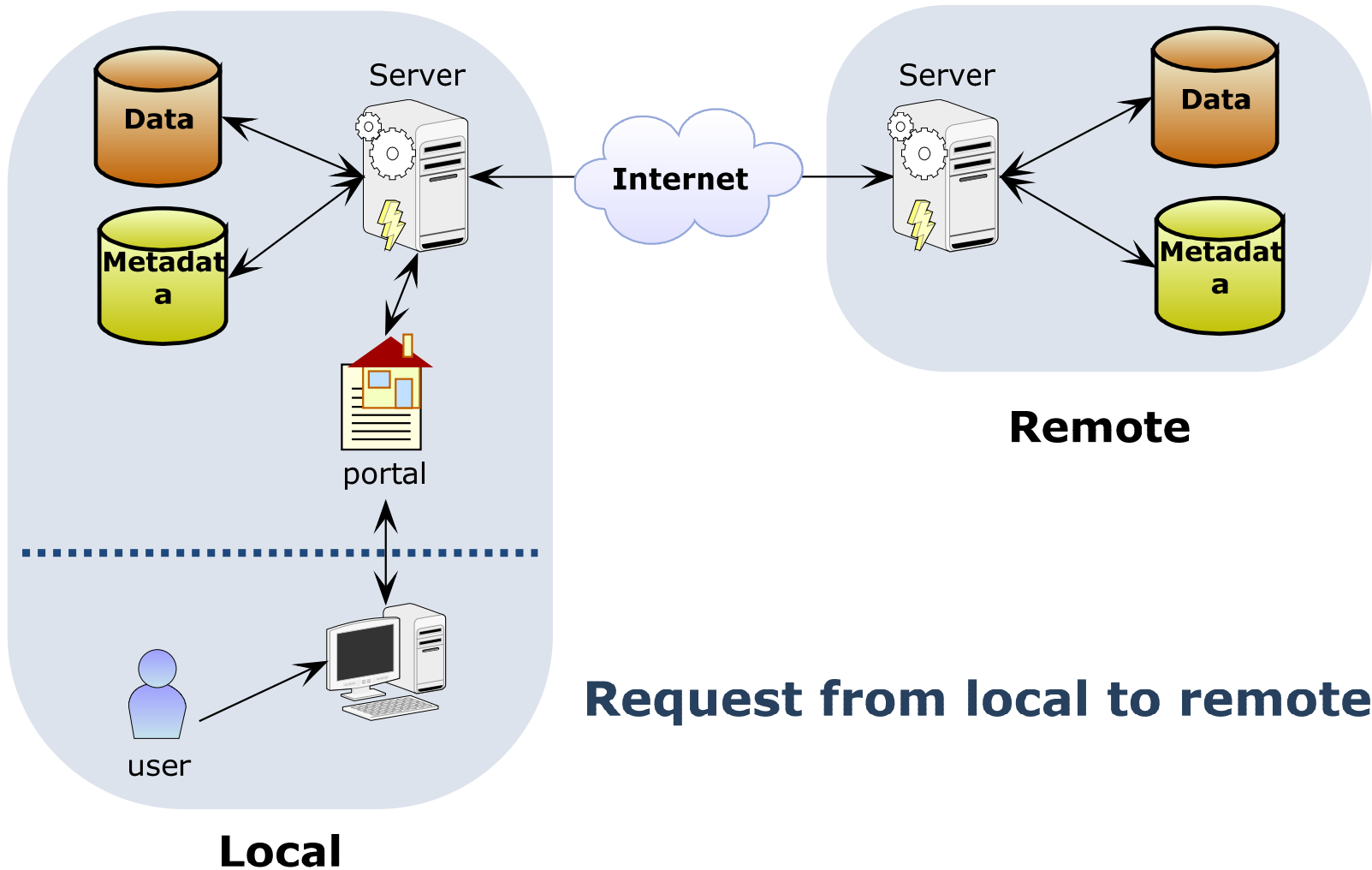
20071120051918-0793-56-BABJ-1.zip

20071120051918-0793-56-BABJ-2.zip

20071120051918-0793-56-BABJ-3.zip

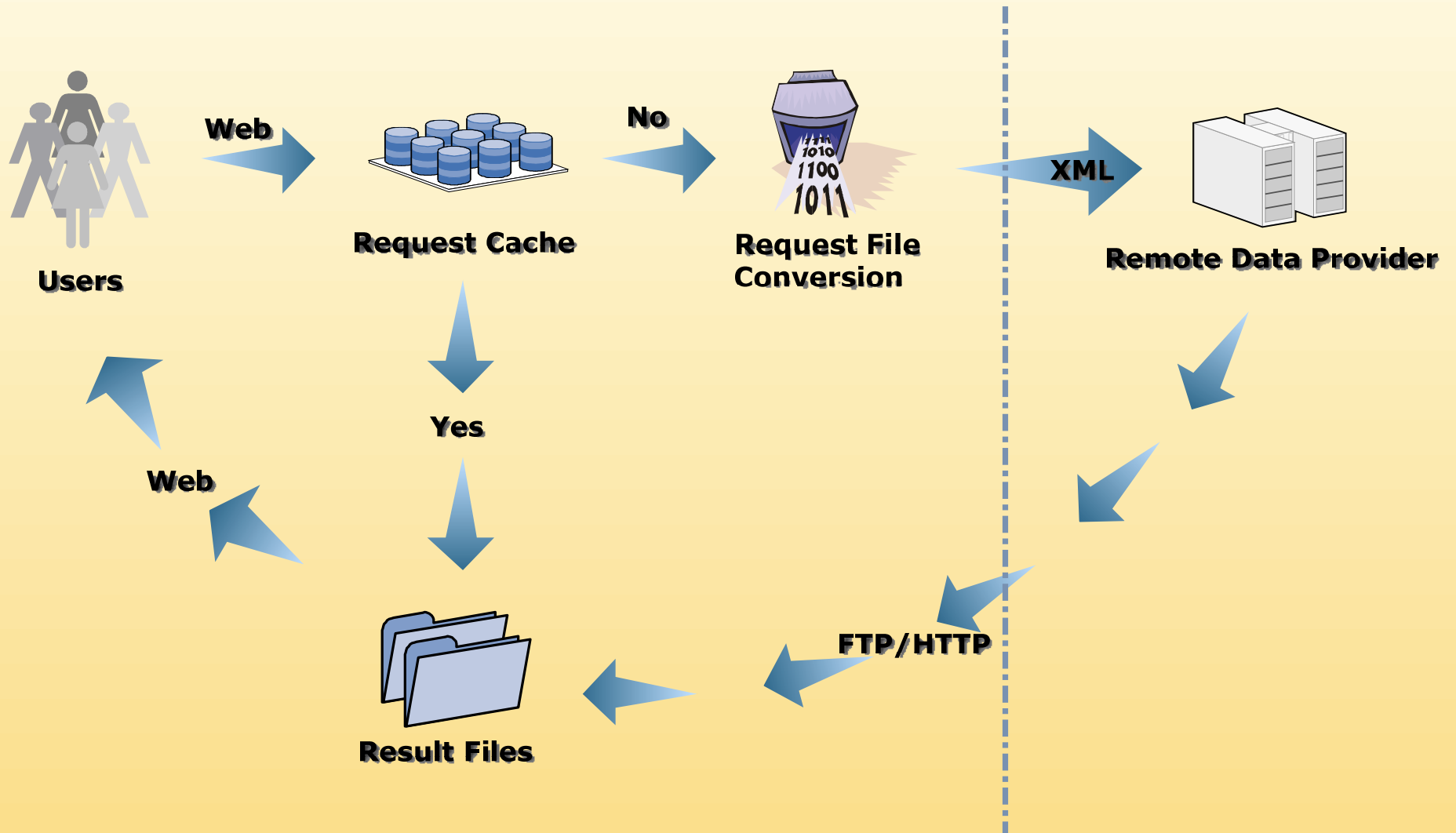
Result
data
filename
list

Request Process



Request Process

Request Process From Local To Remote



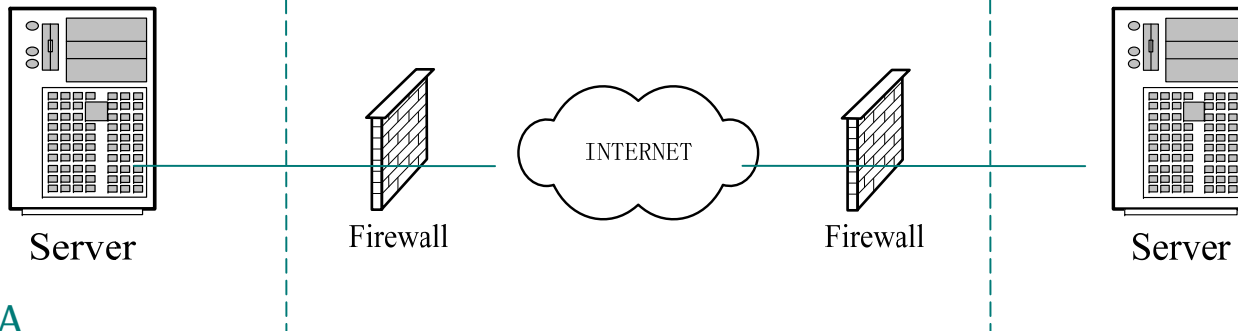
Request Validation

1. Submit data request file

2. Call web service to validate the request

3. Return result of validation

4. Return process result



CMA

JMA