

# ENVIRONMENTAL AGENCY OF THE REPUBLIC OF SLOVENIA

## Information System of Measuring Networks (ISMN)



Jože Miklavčič, Majda Tomažič Spiller, Tadej Komavec, Andrej Kristan  
Monitoring Office, Environmental Agency of the Republic of Slovenia

An information system of measuring networks (ISMN) at the Environmental Agency of the Republic of Slovenia was built two years ago. ISMN gives complete information about instruments and operational events in network that can affect measurement of different physical quantities. A base for tracing the history of instruments and events is set in a Oracle RDBMS. It is always known where a measuring instrument is (or was) at the appointed time or what it is (or was) a configuration of a measuring station during the time. Measured data are also connected with measuring instruments and with the operational events on each measuring place, therefore more information about meta data is given to the users. Due to ISO 9001 standard we also connected measured data with calibration flag.



### Network

Hydrology  
Meteorology  
Seismology  
Water Quality  
Air Quality  
Radioactivity

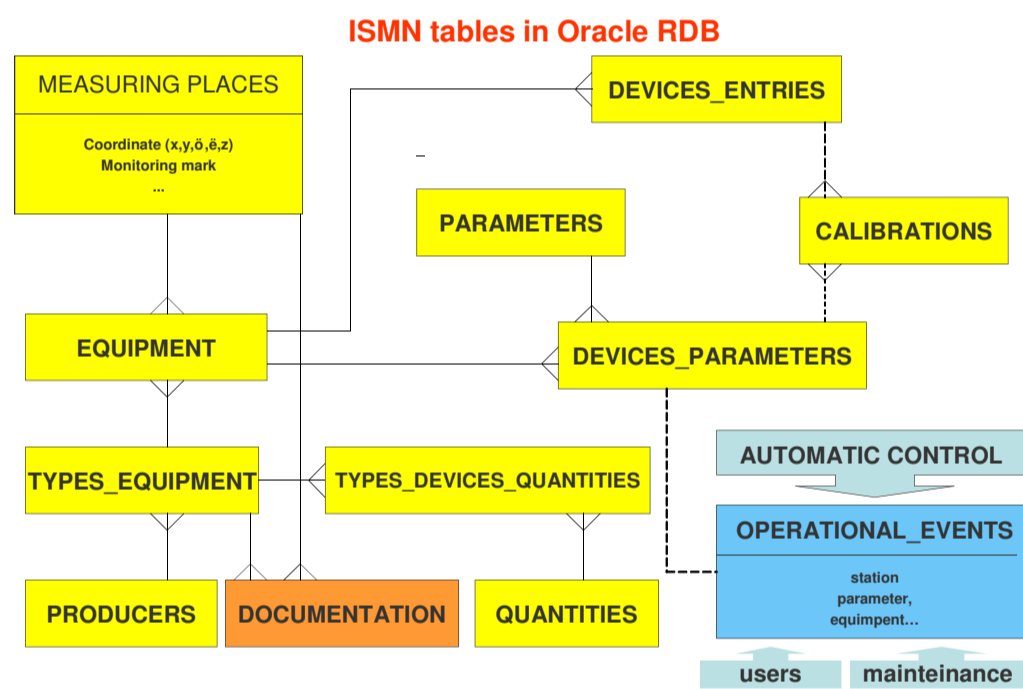
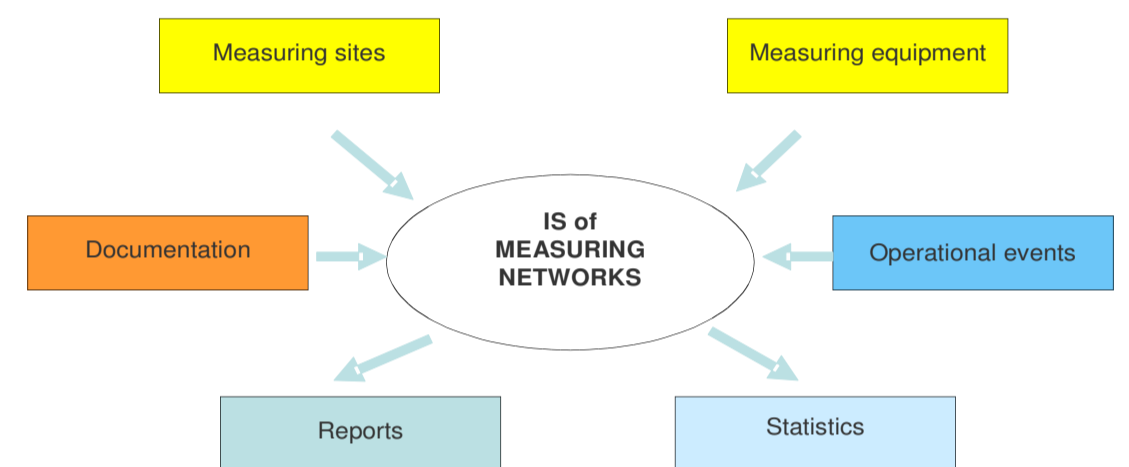
1026  
measuring  
sites

### Equipment

2622 devices  
330 types  
103 producers

70 quantities  
204 parameters

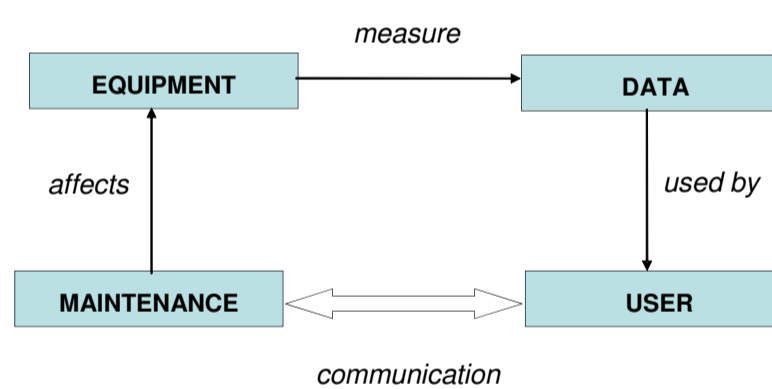
### Parts of ISMN



### Applications

- Oracle forms
  - Inserting a new equipment into ISMN
  - Transfer of equipment between measuring sites
  - Inserting a calibration certificate
- PHP script language
  - Reports from ISMN:
    - Which devices are in selected monitoring
    - Which quantity, parameters are measured and where
    - What it is measured at selected site
    - Where is measuring device with entered number of certificate
  - Documentation
  - Statistics
- DB procedures and functions in Oracle PL/SQL language
  - Sending e-mails
  - Inserting identification number of instrument in data tables
  - Calculating of statistical values

### Dataflow in IS



### Operational event table

- Connecting channel between data users and the maintenance service.
- Operational event is anything what is entered in this table. It can be a message from automatic data control, an output from DB procedures or anything what is manually entered by controllers or maintenance service. DB procedures insert some messages with information when certificate expiry dates or which measuring device should be checked in the next period.

