



World Meteorological Organization · Commission for Instruments and Methods of Observations

Solid Precipitation Intercomparison Experiment

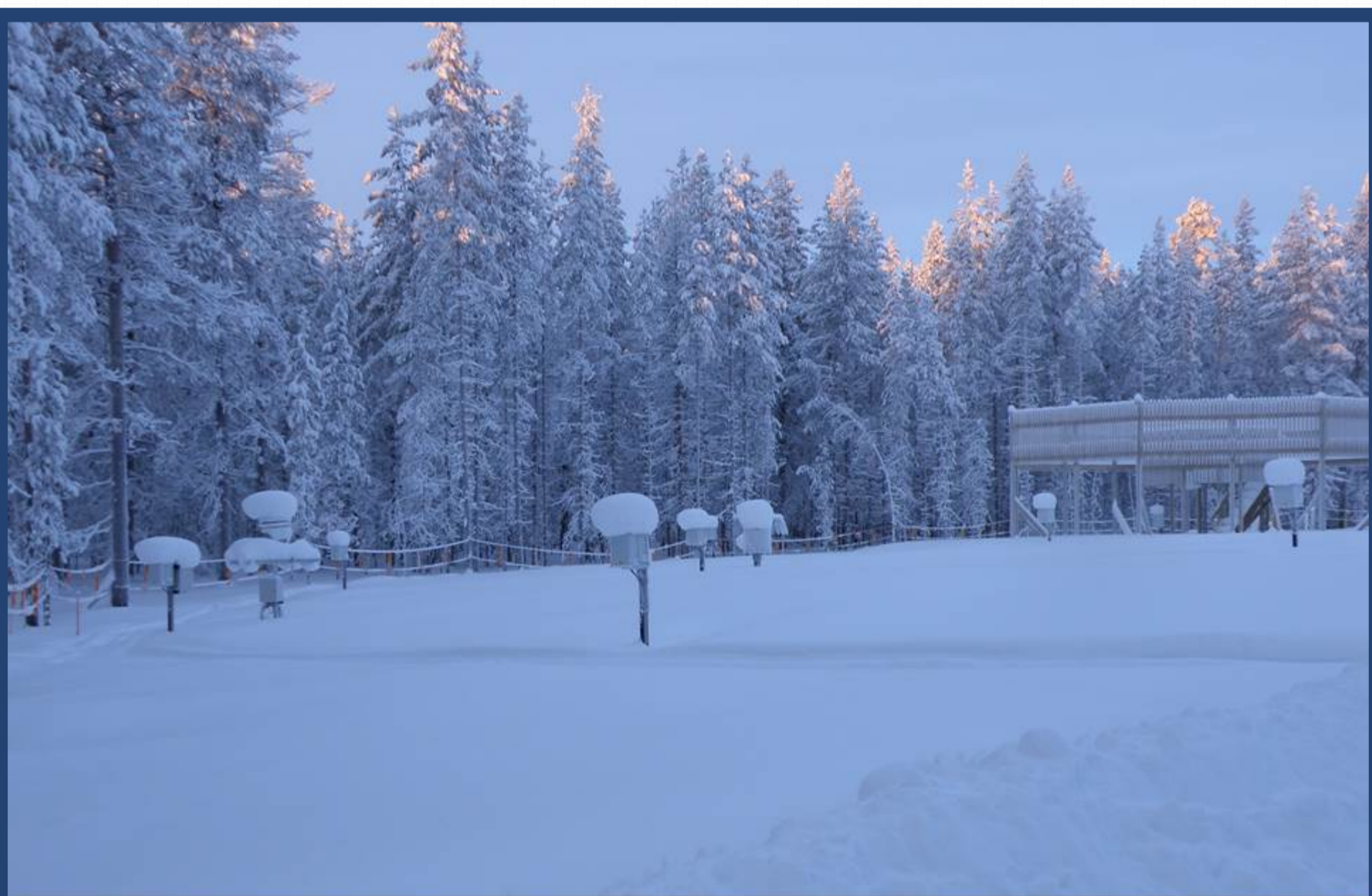
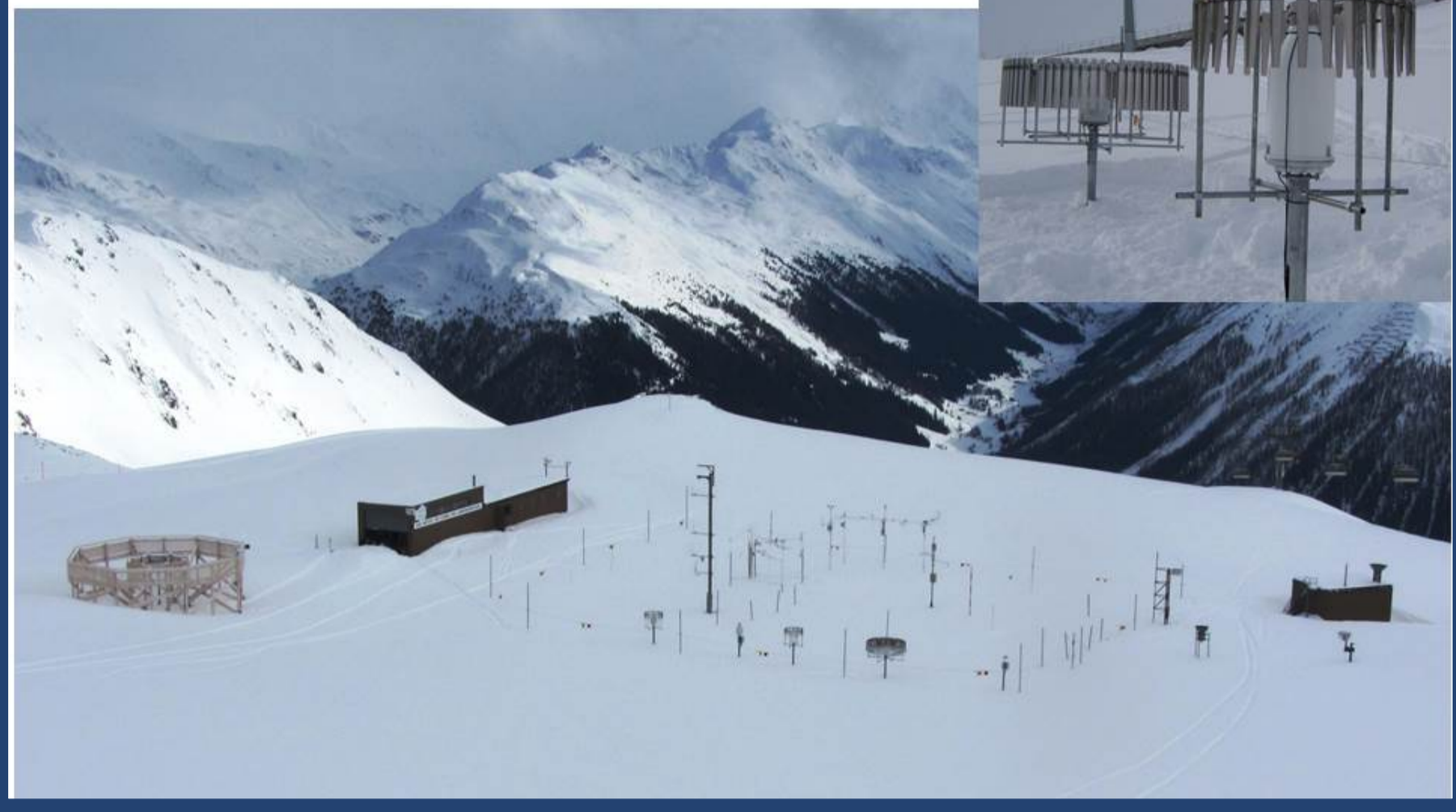
WMO/CIMO-SPICE

Engagements and Progress

<http://www.wmo.int/pages/prog/www/IMOP/intercomparisons/SPICE/SPICE.html>



Weissfluhjoch:
MeteoSwiss and
Swiss Institute for Snow and Avalanche Research,
SWITZERLAND



Sodankylä FMI Arctic Research Centre
Finnish Meteorological Institute, FINLAND



Caribou Creek
Northern Saskatchewan Intercomparison Facility
Environment CANADA



Bratt's Lake Observatory,
Wilcox, Saskatchewan,
Environment CANADA

Haukelisetser
Vinjeveien, Telemark,
Norwegian Meteorological Institute, NORWAY



Centre for Atmospheric Research and Experiments (CARE),
Egbert, Ontario
Environment CANADA



"Marshall" NOAA/FAA/NCAR
Winter Precipitation Testbed
UNITED STATES OF AMERICA

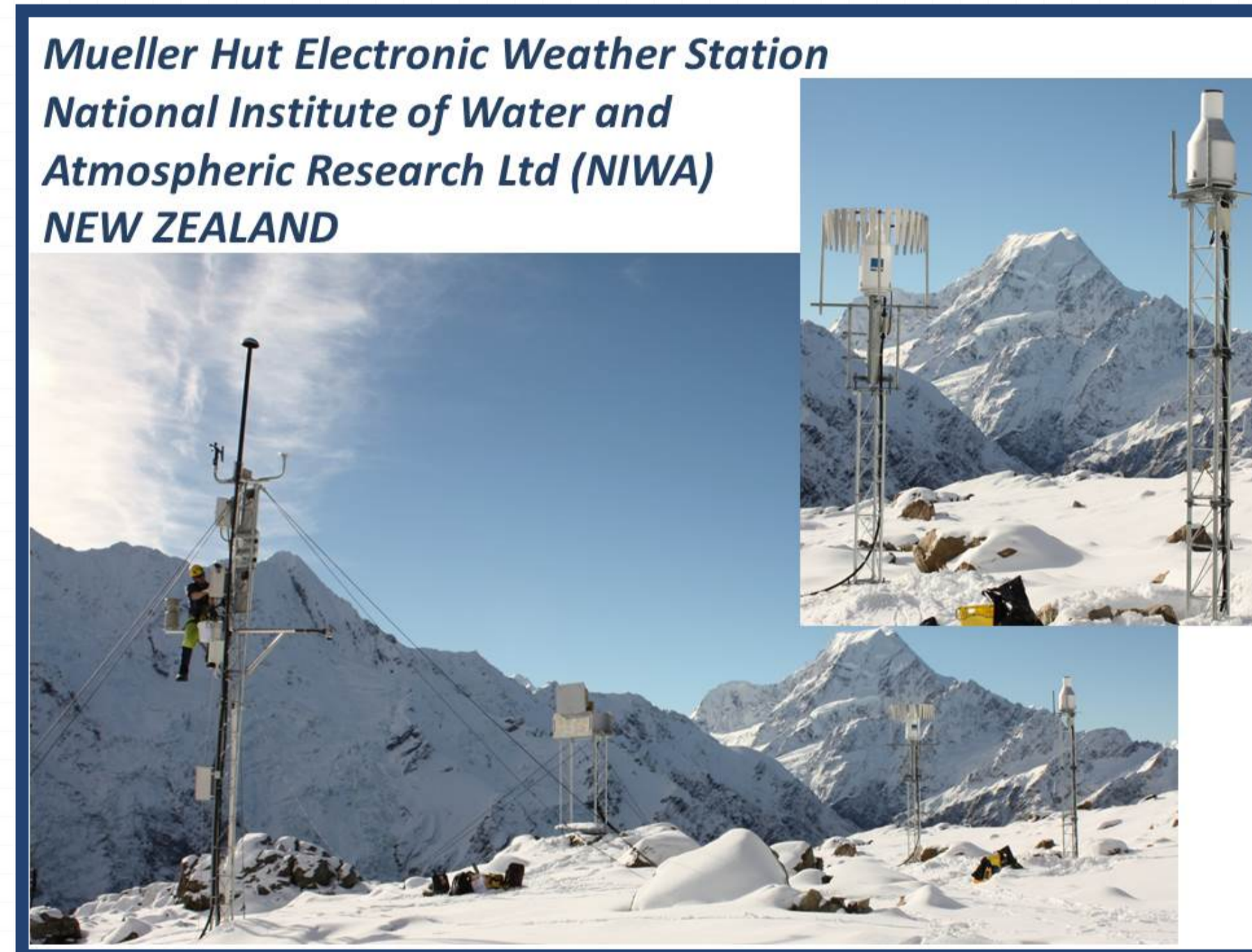


Col de Porte (CDP)
Météo-France,
Centre National de Recherches, Météorologiques, Centre
d'Etudes de la Neige

Guthaga Dam weather station,
Kosciuszko National Park, New South Wales
Snowy Hydro Limited, AUSTRALIA



Gochang Observatory,
Korean Meteorological Administration,
REPUBLIC OF KOREA



Mueller Hut Electronic Weather Station
National Institute of Water and
Atmospheric Research Ltd (NIWA)
NEW ZEALAND



ARAMON - Formigal,
AEMET:
Spanish State Met. Agency
Aragon Regional office,
SPAIN

Intercomparison Plan:

- Commenced in 2012;
- Formal experiments to continue until 2015
- Local experiments could continue beyond 2015.
- 2014: publish the Report on SPICE Working Field Reference
- 2016: Final Report



Pyramid International Laboratory Observatory
Lobuche, SoluKhumbu, Nepal;
Everest-K2 Committee,
National Research Centre of Italy (Ev-K2-CNR)



Forni Glacier - Upper Valtellina; ITALY
Everest-K2 Committee,
National Research Centre of Italy (Ev-K2-CNR)



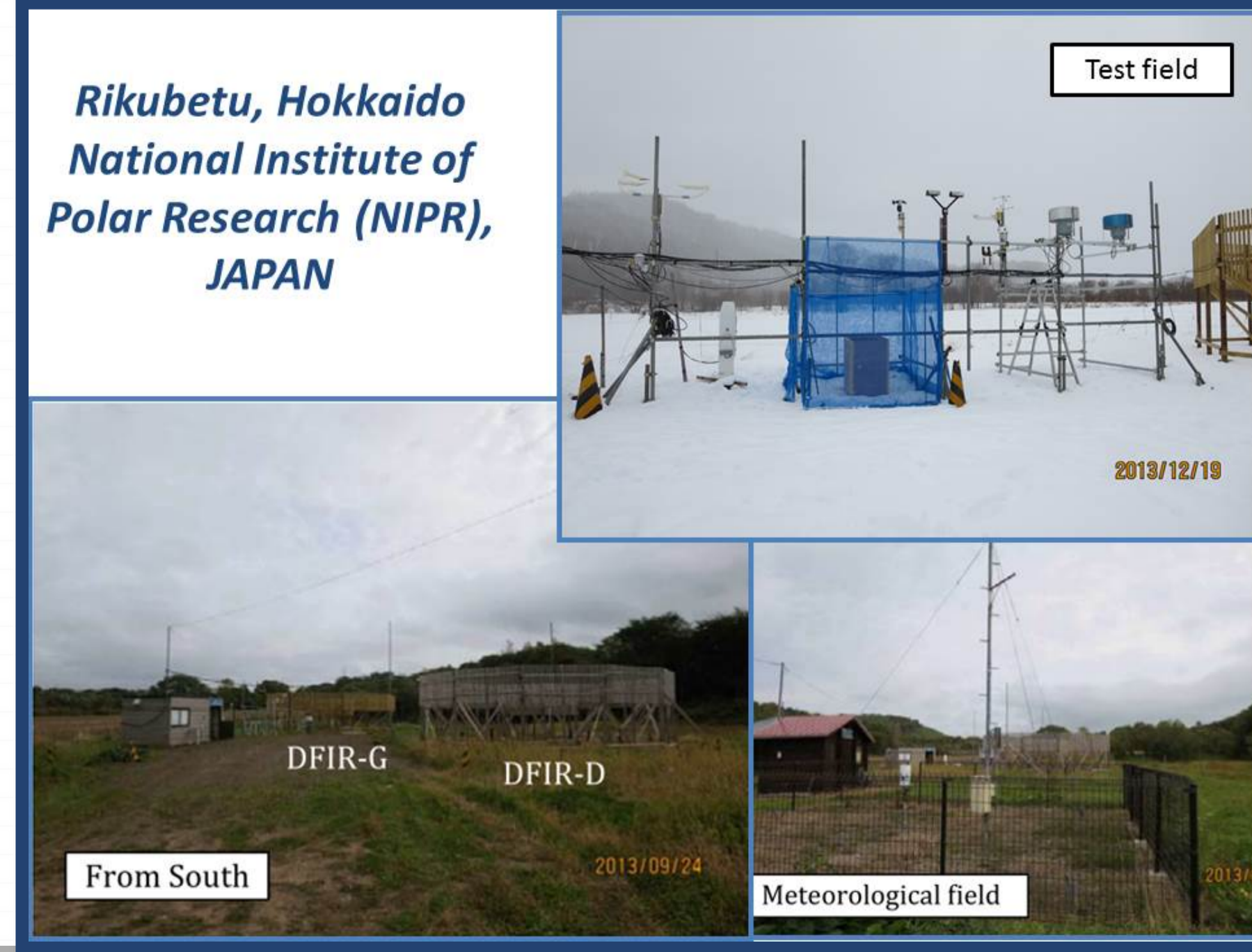
Hala Gasienicowa station
Institute of Meteorology and Water Management –
National Research Institute (IMGW-PIB), POLAND

Participation:

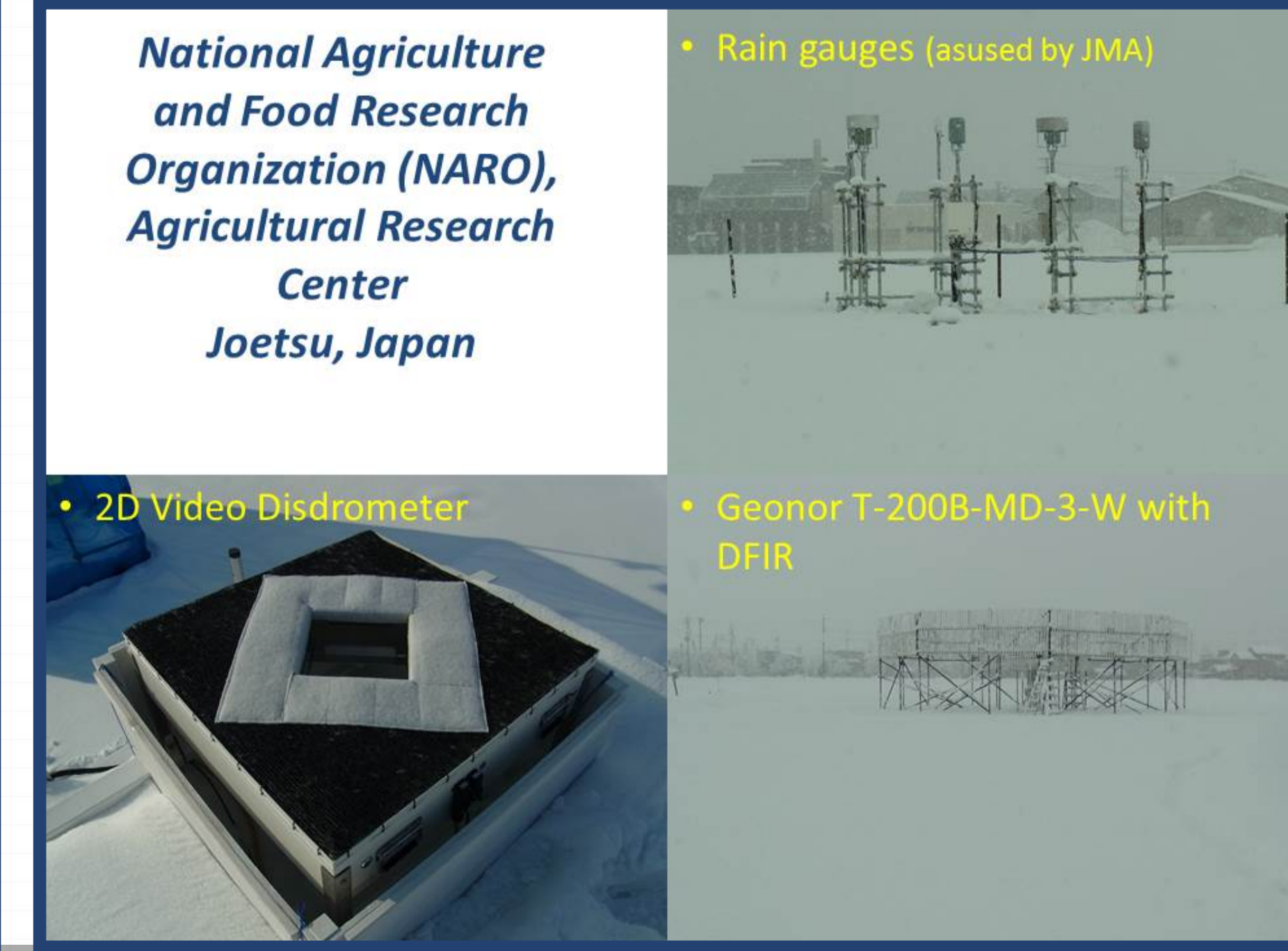
- ✓ 20 sites in 15 countries, testing national methods and instruments provided by Instrument Providers
- ✓ 21 Instrument Providers contributed 27 instrument Models (weighing gauges, tipping buckets, non-catchment type instruments, snow depths sensors)

Contact:

- ✓ Rodica Nitu, Canada, Project Lead: rodica.nitu@ec.gc.ca
- ✓ Mareile Wolff, Norway, Data Analysis Lead: mareile.wolff@met.no
- ✓ WMO Secretariat: Isabelle Ruedi, iruedi@wmo.int



Rikubetu, Hokkaido
National Institute of
Polar Research (NIPR),
JAPAN



National Agriculture and Food Research Organization (NARO),
Agricultural Research Center
Joetsu, Japan

- Rain gauges (asused by JMA)
- 2D Video Disdrometer
- Geonor T-200B-MD-3-W with DFIR