



INMET



INSTITUTO NACIONAL DE METEOROLOGIA

PLATA BASIN HYDROMETEOROLOGICAL FORECASTING AND EARLY WARNING SYSTEM

CONSULTATION MEETING
Brasilia, Brazil, 21-25 May 2018

ICT INFRASTRUCTURE – BRAZIL/INMET

WEATHER CLIMATE WATER
TEMPS CLIMAT EAU

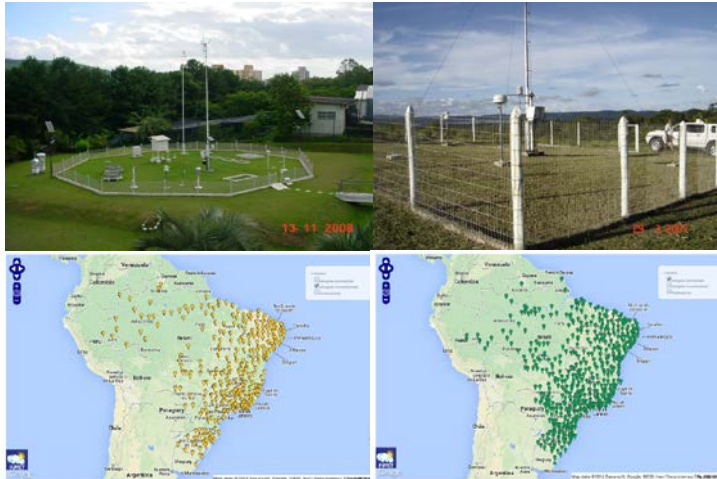


WMO OMM

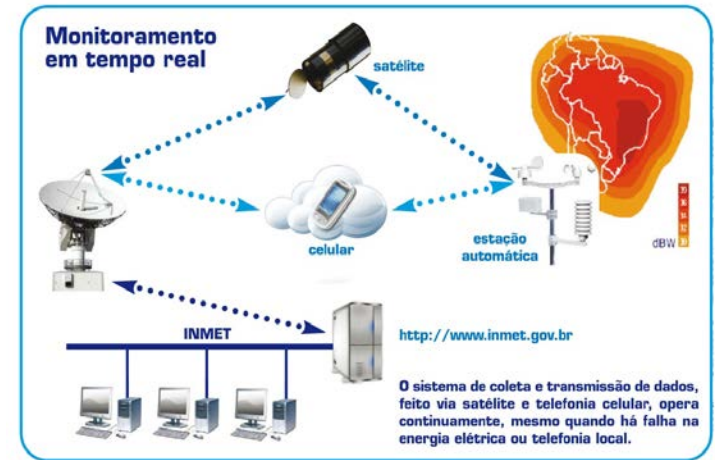
World Meteorological Organization
Organisation météorologique mondiale

José Arimatéa de Sousa Brito
Chair RA-III WG-ITD

OBSERVATION AND TELECOMMUNICATION INFRASTRUCTURE



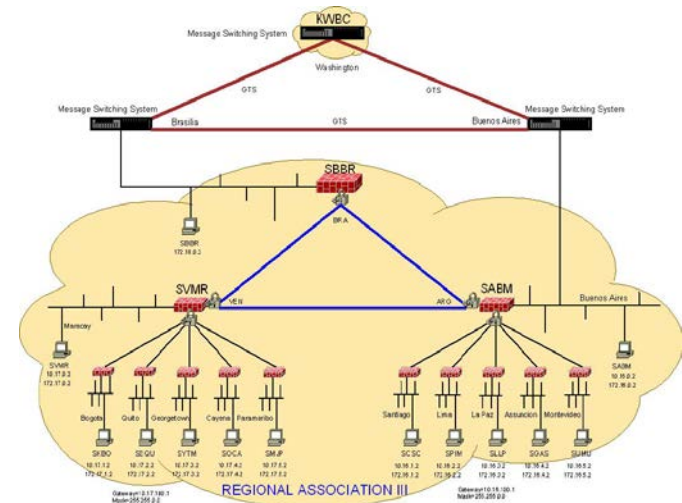
Manned and automatic Weather Station Network



INMET's national data collection system



AWS Maintenance support



RA-III IP-VPN network

TELECOMMUNICATION/SERVER INFRASTRUCTURE



ADVANCED SCALABLE POWEREDGE BLADE SERVERS

- 02 M610 (2 processors, 096 Gbytes of memory)
- 06 M630 (2 processors, 256 Gbytes of memory)
- 27 M640 (2 processors, 768 Gbytes of memory)

SAFE ROOM ENSURING AUTONOMOUS OPERATION

STRONG NETWORK SECURITY



WMO OMM

SUPERCOMPUTER INFRASTRUCTURE



Processing power of 55,6 Tflops (SGI/HPE)

Running COSMO 00, 06, 12, 18 UTC at 7km over South America (5 days); 2.8km (24h) over areas of Brazil

Running COSMO at 1Km, experimentally

Housed in a safe room with power ensuring several days of autonomous operation



WMO INFORMATION SYSTEM (WIS) – GISC BRASILIA

GISC (Global Information System Centre (Node: Offenbach): Simple Search - Mozilla Firefox

File Edit View History Bookmarks Tools Help

http://localhost:8080/gisc/toSimpleSearch.do

GISC (Global Information System Cent...

GISC BRASILIA
WIS portal of Instituto Nacional de Meteorologia (INMET), Brazil

Language Login

Data Discovery

- Simple Search
- Extended Search
- Browse category
- Expert Search
- SRU Search
- Package List

Registration

Miscellaneous

Simple search

Provider: all

Free text (meteorologic elements)

Geographic coordinates: -73.8, 5.3, -34.8

Region: -User defined-

Continue Reset

Map Satellite Hybrid

Map data ©2010 Geocentre Consulting, MapLink, Tele Atlas - Terms of Use

Done



INTERNET ACCESS OF RA-III NMHS

	Type of access Speed	2017	
		Comercial (Mbps)	Internet 2 (Mbps)
		→ ARGENTINA	250 + 250
→ BOLÍVIA	4 + 4 + 15		
→ BRASIL	200 + 200	1000	
CHILE	100		
COLOMBIA	128 + 64		
ECUADOR	30		
G. FRANCESA	-		
GUYANA	5 + 5 + 5		
→ PARAGUAY	80 + 40		
PERU	70		
SURINAME	8, up to 45		
→ URUGUAY	3		
VENEZUELA	4 + 2		

→ Plata Basin

REGIONAL INFRASTRUCTURE

**REGIONAL ASSOCIATION III
WORKING GROUP ON INFRASTRUCTURE AND TECHNOLOGICAL DEVELOPMENT (WG - ITD)
SECOND SESSION
(Asunción, Paraguay, 4-6 October 2017)**

FINAL REPORT

https://www.wmo.int/pages/prog/www/WIGOS-WIS/reports/Final-Report-WG-ITD-RA-III_en.docx

**ASOCIACION REGIONAL TERCERA
GRUPO DE TRABAJO SOBRE INFRAESTRUCTURA Y DESARROLLO TECNOLOGICO (GT-IDT)
SEGUNDA REUNIÓN
(Asunción, Paraguay, 4-6 octubre 2017)**

INFORME FINAL

https://www.wmo.int/pages/prog/www/WIGOS-WIS/reports/Final-Report-WG-ITD-RA-III_es.docx



INMET



Thanks/Gracias

WEATHER CLIMATE WATER
TEMPS CLIMAT EAU



WMO OMM

World Meteorological Organization
Organisation météorologique mondiale