



**USAID**  
FROM THE AMERICAN PEOPLE



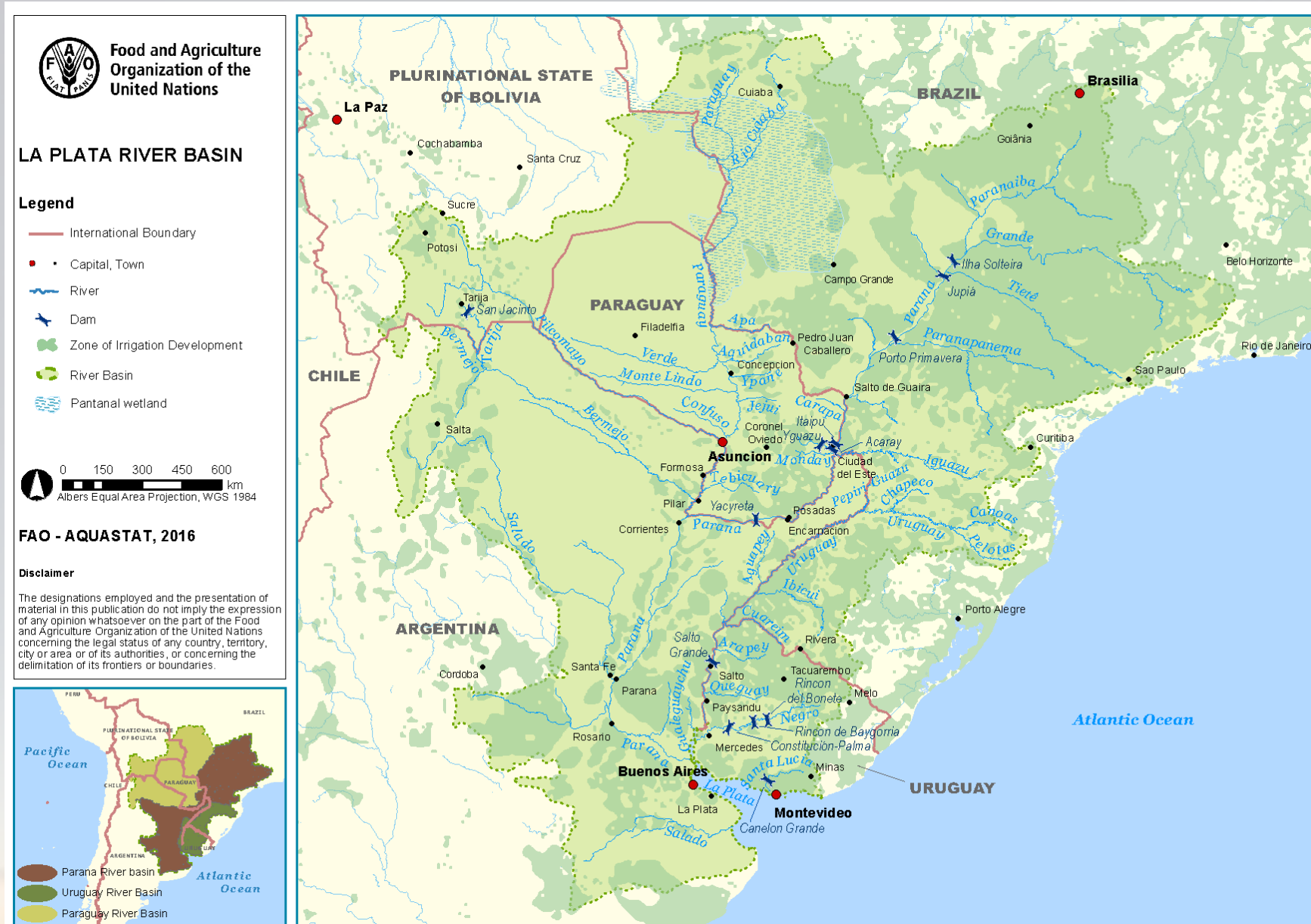
# Use of FFGS Products in External Models

Konstantine P. Georgakakos, Sc.D.

HYDROLOGIC RESEARCH CENTER

23 May 2018

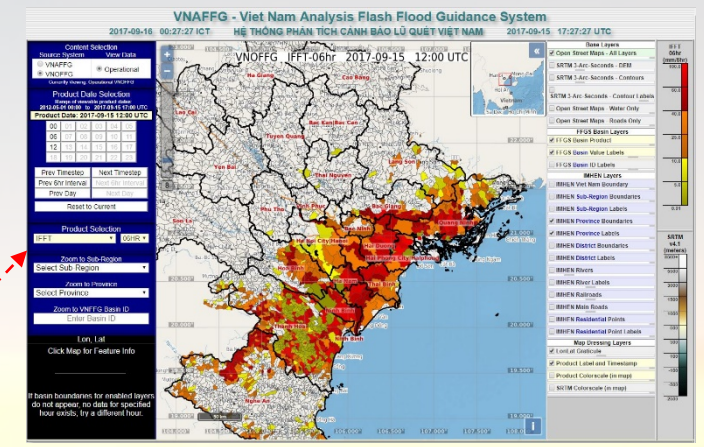
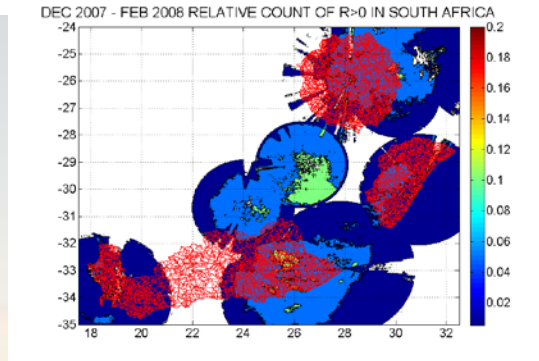
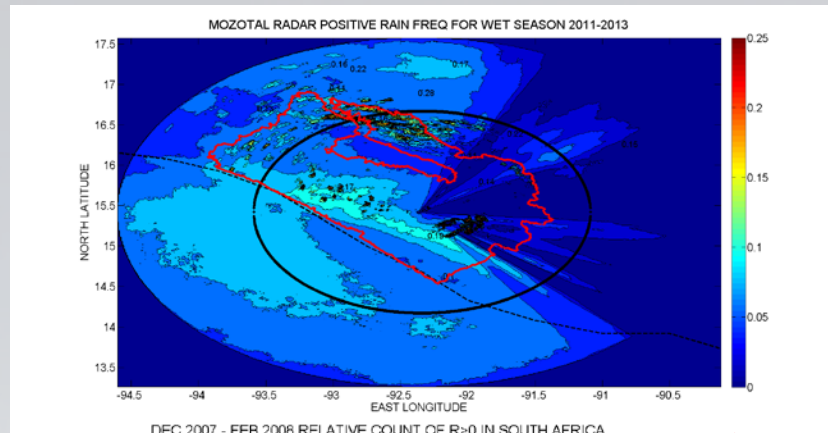
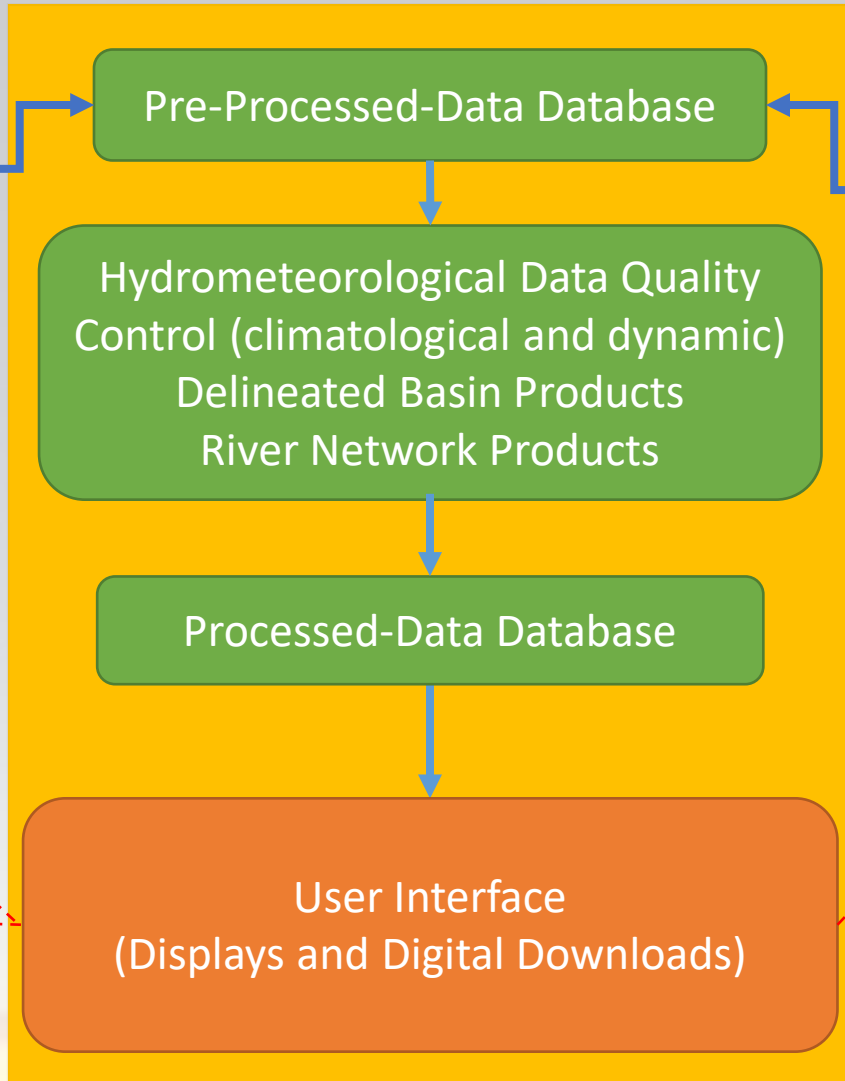
# Río de la Plata



# FFGS Data Integration Component for Hydrometeorological Modeling and Assessments

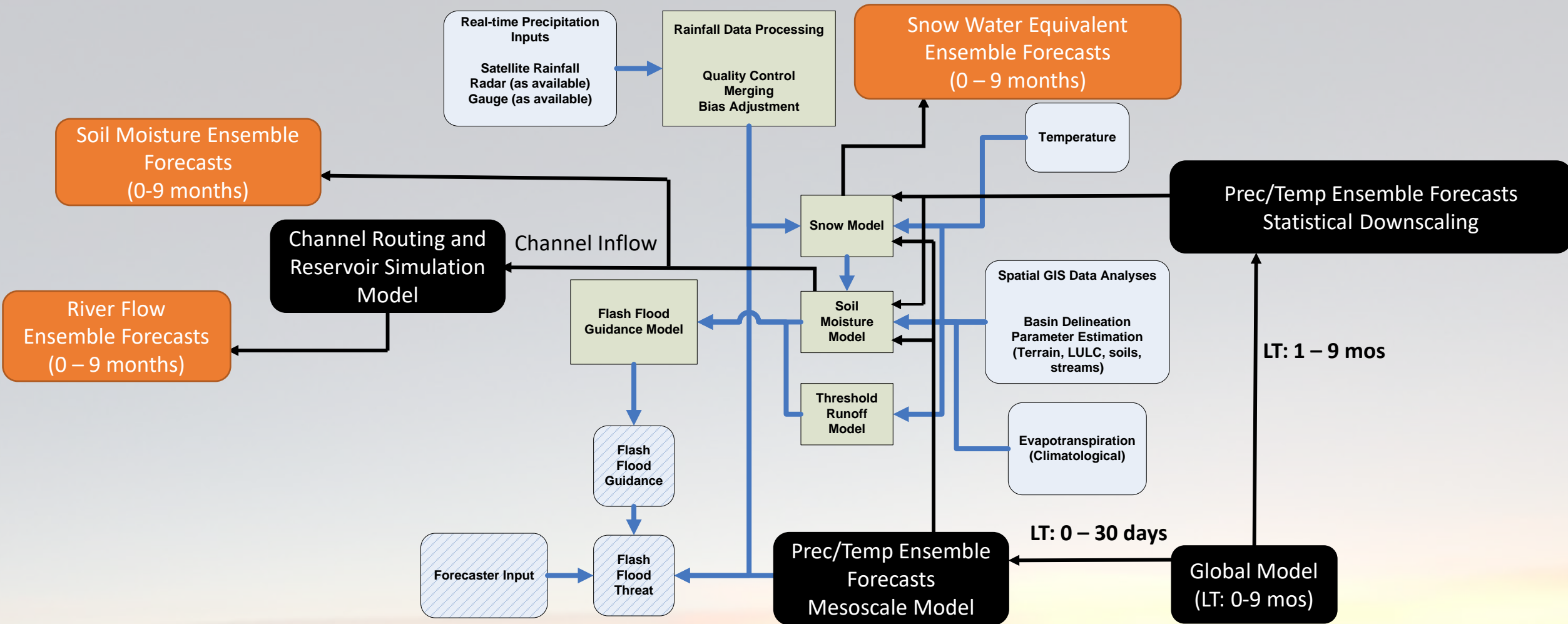
Satellite Hydrometeorological Data  
 Weather Radar Data  
 Automated Precipitation Gauges  
 Automated Surface Observation Stations

Digital Terrain Elevation Data  
 Land-Use Land-Cover Data  
 Soil Type and Depth Data  
 Stream Cross Sectional Surveys  
 Reservoir Characteristics and Rules



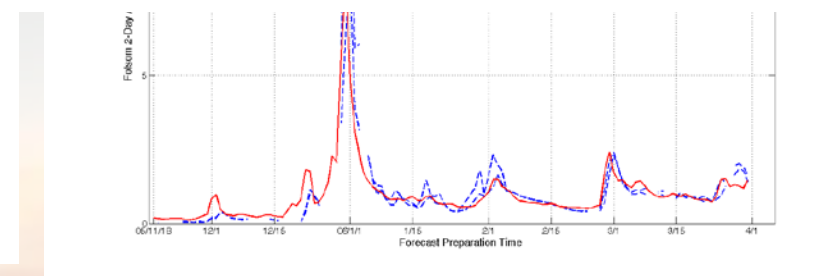
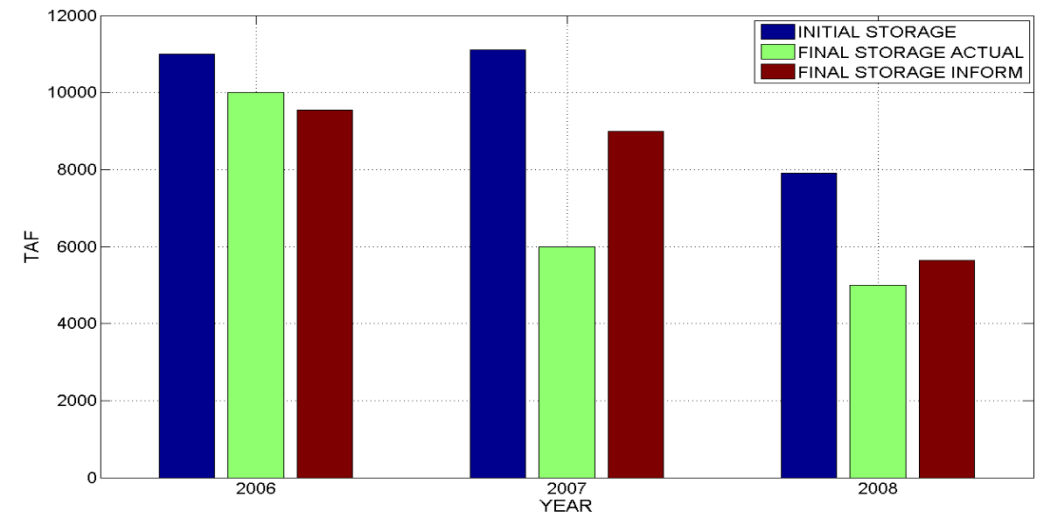
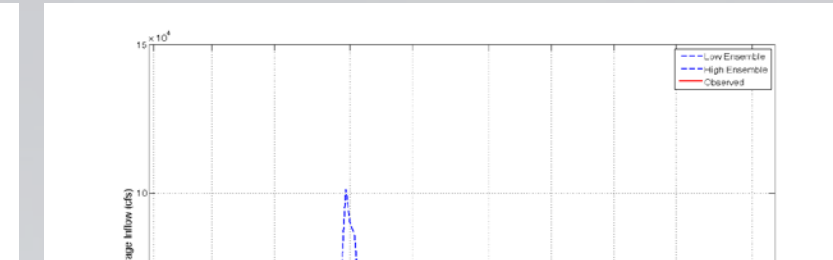
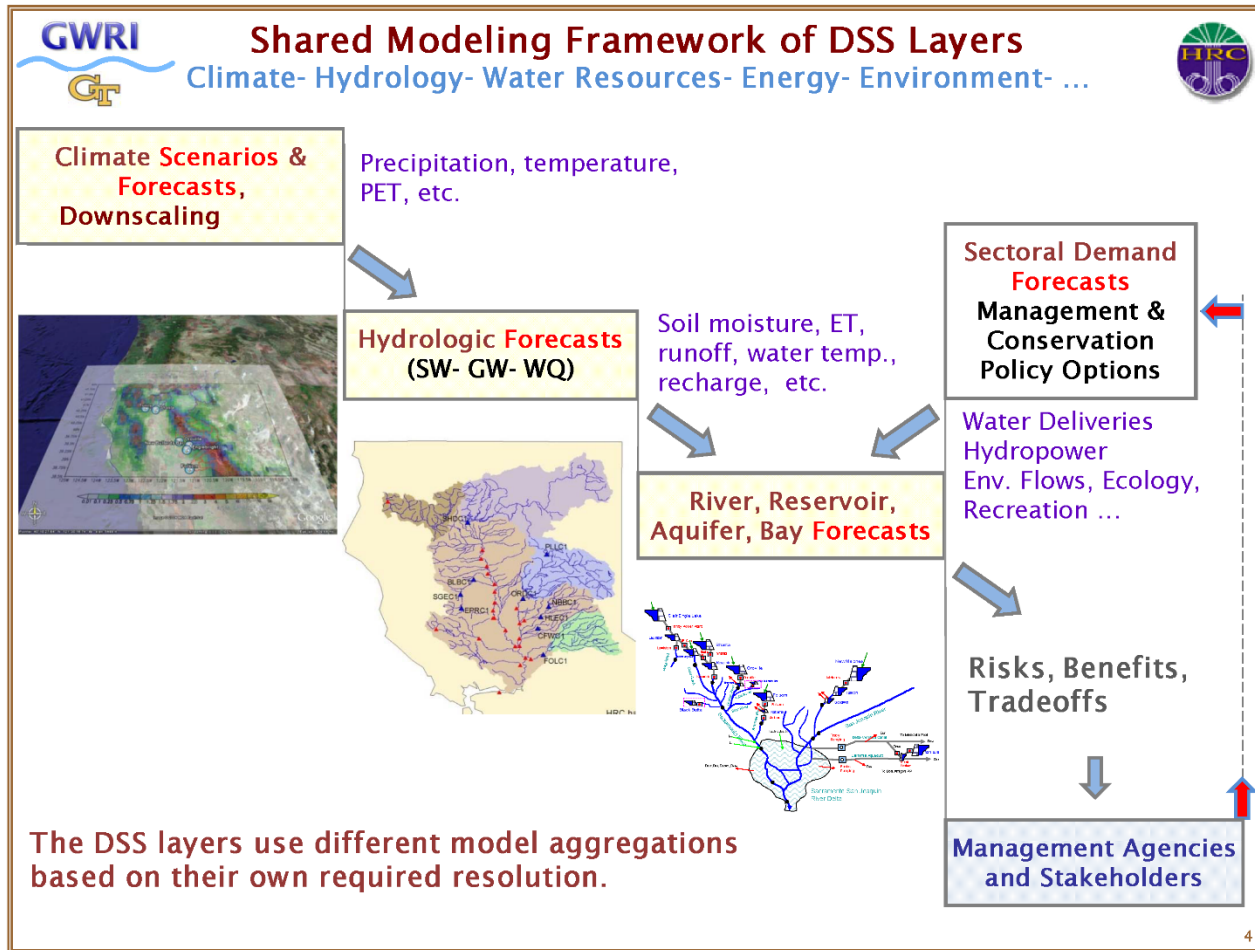
User Interface  
 (Displays and Digital Downloads)

# FFGS Enhanced for Seasonal to Sub-seasonal Land-Surface Prediction



# Sacramento River Example in California, USA

## The Integrated Forecast and Reservoir Management System - INFORM



# Urban Flash Flood Early Warning System Component

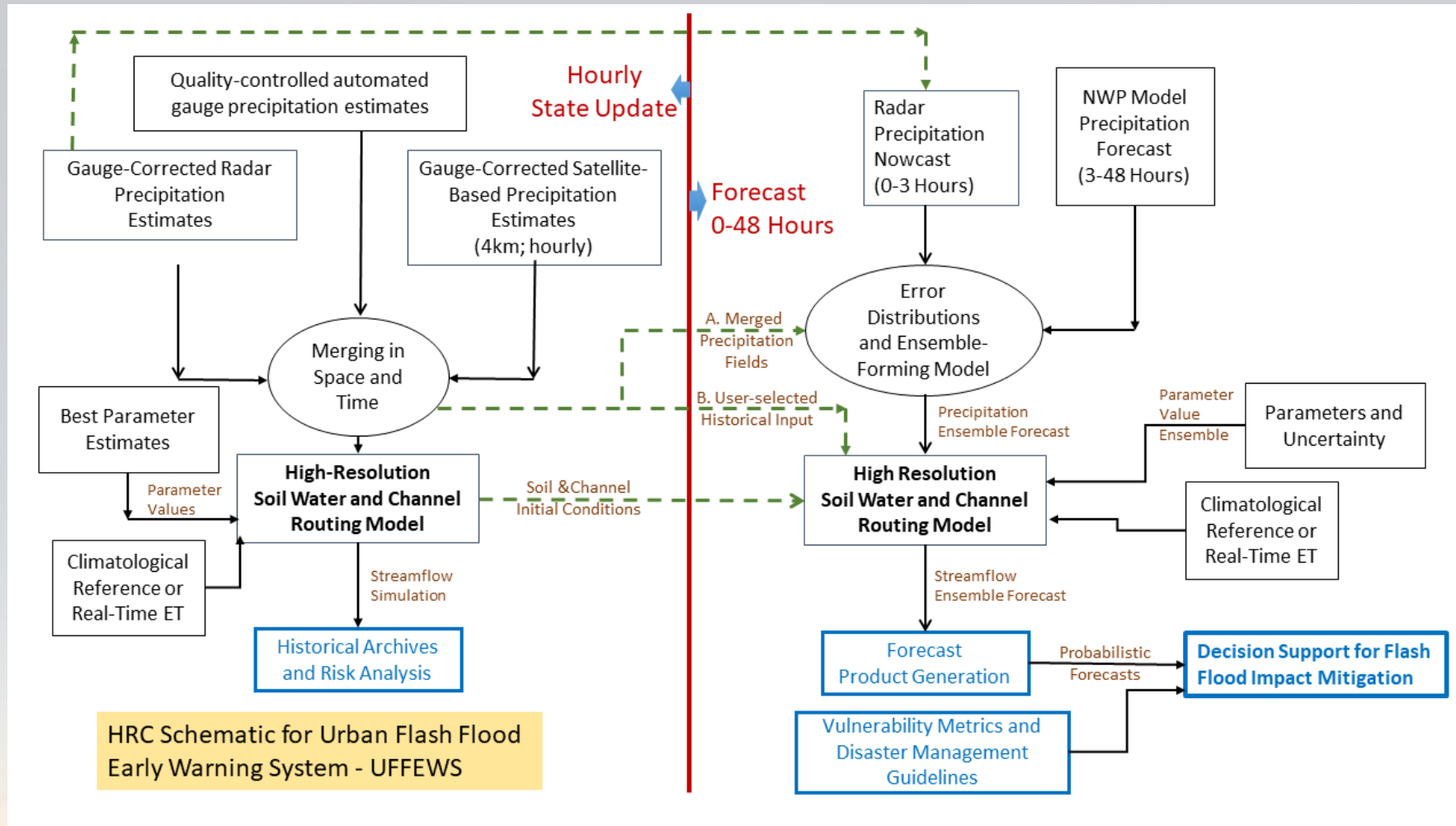


Figure 10. Inundation polygons derived from different discharge values indicating where inundation is likely to occur (HRC).

# Thank You

The Hydrologic Research Center FFGS Staff  
<http://www.hrcwater.org>



Hydrometeorology  
Dr. Konstantine Georgakakos  
Dr. Theresa Modrick

Hydrology  
Dr. Eylon Shamir

Meteorology/Climate  
Mr. Bob Jubach  
Dr. Nicholas E. Graham

Training/Education  
Dr. Rochelle Graham

River Mechanics  
Dr. Zhengyang Cheng

Computer Science/Eng.  
Mr. Jason Sperfslage  
Mr. Cris Spencer  
Mr. Randall Banks