



Flash Flood in Myanmar

Presented by :

Su Nandar Myint (Ms.)

Staff Officer

Emergency Operation Center

Department of Disaster Management

Contents

- Introduction
- Present Recorded Disasters in Myanmar
- Flash Flood in Myanmar
- DDM's Activities on Flash Flood
- Needs

Ministry of Social Welfare,
Relief and Resettlement

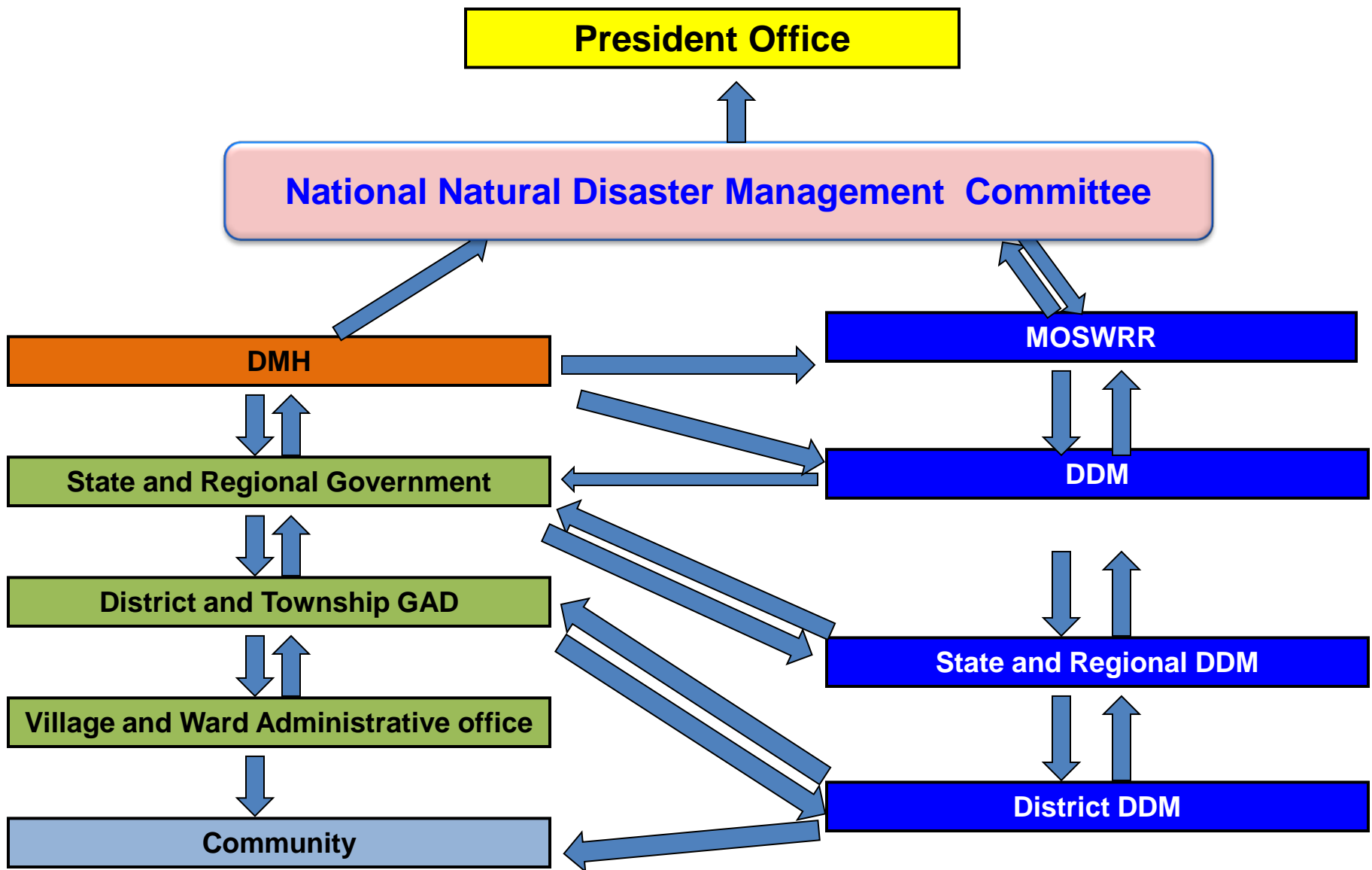
```
graph TD; A["Ministry of Social Welfare,  
Relief and Resettlement"] --> B["Department of Social Welfare  
(DSW)"]; A --> C["Department of Disaster Management  
(DDM)"]; A --> D["Department of Rehabilitation  
(DOR)"];
```

Department of
Social Welfare
(DSW)

Department of
Disaster
Management (DDM)

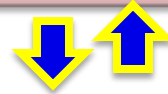
Department of
Rehabilitation(DOR)

Warning Dissemination System Of Ministry of Social Welfare, Relief and Resettlement

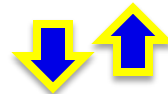


Coordination, Cooperation and Communication System For DRM

National Disaster Management Committee



Ministry of Social Welfare, Relief and Resettlement



Department of Disaster Management



AHA Centre

Concerned Departments

International Organizations

UN/INGOs

ACDM

Ministries

State/Regional Government

Intelligentsia

Private Organizations

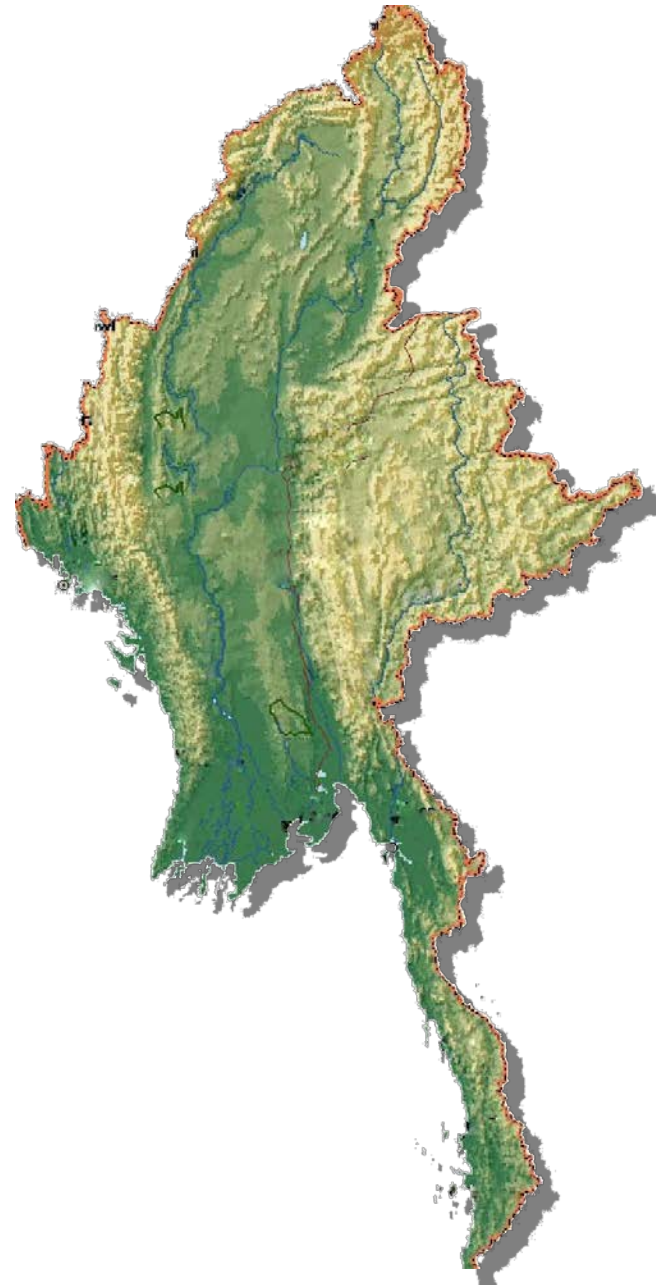
LNGOs

How to get Early Warning from DMH?

- Fax (Daily)
- Official Letter
- Single Side Band (SSB) (daily 2:30 pm)
- Weekly Discussion (on Friday) especially during Raining Season (initiated 2017)

Hazards, Frequently occur in Myanmar

- ▶ Fire
- ▶ Flood
- ▶ Storm
- ▶ Lightning
- ▶ Earthquake
- ▶ Tsunami
- ▶ Landslide
- ▶ Drought



Present Recorded Disasters in Myanmar

No.	Date	Hazard	Estimate Lost (Kyats)
1	26-12-2004	Tsunami	(1585.56)Million
2	2/3-May-2008	Cyclone Nargis	(11.7)Trillion
3	22-10-2010	Cyclone Giri	(0.024)Trillion
4	24-3-2011	Tarlay Earthquake	(3031.30)Million
5	19/20-10-2011	Magwe Flash Flood	(15465.25)Million
6	11-11-2012	Thabaikkyin Earthquake	(8140.12)Million
7	June-September, 2015	2015 Myanmar Flood and Landslide	(224853.9778)Million

Flash Flood in 2011



Myanmar Information Management Unit
Overview of the Flood Situation in Myanmar
As of 21 October 2011



Flash floods affected in Magway, Mandalay and Sagaing Regions on 19 October 2011.

heavy rain (up to 100-150 mm) and subsequently triggered flash floods in Magway, Mandalay and Sagaing Regions of Myanmar.

heavy rain started on the evening of October 19, with Pauk recording 7.47 inches, Myaing 3.7 inches, Yesagyo 4.3 inches and Pakokku 4.92 inches in Pakokku.

The torrent water destroyed Shwechaung Bridge.

Flash Flood in Tanintharyi, January 2017

- In Tanintharyi Division, Maw Taung was affected by flash flood due to the heavy rainfall untimely.
- Due to that flash flood, 167 houses were damaged, 167 households and 795 people were affected.
- That area is also the hilly region.

Flash Flood in Tanintharyi, January 2017



Flash Flood in Mandalay, September 2017

- Due to the heavy and continuous raining, KyiTaukPauk Village, Singu township affected flash flood.
- 58 houses were damaged , 419 households and 1475 people are relocated due to flash flood hazard.
- That area is the low-land area around the mountain.

Flash Flood in Mandalay, October 2017



Preparedness Plan for Flood

- Pakokku & Seikphyu townships were defined as the pilot areas of Flood in 2017.
- We built many camps for the people who are living in low-land area for their safety from the seasonal flood in cooperation with Concerned Regional Departments.







ရေဘားရှောင် Camp စခန်းများ ကြိုတင်ပြင်ဆင်ဆောက်လုပ်နေစဉ်

DDM Activities in Flash Flood

- DDM delivered the Public Information Awareness on “Flash Flood” before Monsoon and after monsoon.
- It provided the Public Awareness Information on newspaper, the Public Media such as MRTV, Radio, FM and social media such as Departmental Facebook, Website and then DAN application.
- DDM (Headquarter) provides the information and early warning message to the regional DDM office in order to prepare the relief items in joint collaboration with the concerned government offices.

Types of Public Awareness IEC Materials

- ▶ Cyclone Awareness
- ▶ Flood Awareness
- ▶ Hill Storm Awareness
- ▶ Storm Wind Awareness
- ▶ Fire Awareness
- ▶ Lightning Awareness
- ▶ Landslide Awareness

လူမှုဝန်ထမ်း၊ ကာ
ပြန်လည်နေရာချထု



မှန်တိုင်းဘေးပညာ

မှန်တိုင်းအတွက်ကြို

၁။ မိမိအိမ်ပတ်ဝန်းကျင်တွင်
ဘေးအန္တရာယ်ဖြစ်နိုင်ခြေ
များနှင့် အိမ်၏ကြံ့ခိုင်မှု
ကို စစ်ဆေးပါ။

၂။ အိမ်အနီးရှိ
ကျိုးကျနိုင်သော
သစ်ပင်၊ သစ်ကိုင်း
များကို ခုတ်ထွင်
ရှင်းလင်းထားပါ။

၃။ မိသားစုများအရေးပေါ်
ပြောင်းရွှေ့နိုင်ရန် နေရာ၊
လမ်းကြောင်းများ
နှင့် မိသားစုဆုံရပ်ကို
ကြိုတင်သတ်မှတ်
ထားပါ။

(ဥပမာ- အသက်ကယ်
ကုန်းခြင်း၊ ရေလွတ်နိုင်
သည့်နေရာများ၊
အဆောက်အအုံများ)

လူမှုဝန်ထမ်း၊ ကယ်ဆေး
ပြန်လည်နေရာချထားရေး



ရေဘေးပညာပေး

ရေဘေးအတွက်ကြိုတင်ပြ

၁။ မိမိအိမ်ပတ်ဝန်းကျင်ရှိ
ဘေးအန္တရာယ်ဖြစ်
နိုင်ခြေများနှင့်အိမ်၏
ကြံ့ခိုင်မှုကို
စစ်ဆေးပါ။

၂။ မိသားစုများ အရေးပေါ်
ပြောင်းရွှေ့နိုင်ရန်နေရာ၊
လမ်းကြောင်းများနှင့်
မိသားစုဆုံရပ်ကို
ကြိုတင်သတ်မှတ်
ထားပါ။



လူမှုဝန်ထမ်း၊ ကယ်ဆယ်ရေးနှင့်
ပြန်လည်နေရာချထားရေး ဝန်ကြီးဌာန



မြေပြိုခြင်း ပညာပေးစာစောင်

မြေပြိုခြင်းအတွက်ကြိုတင်ပြင်ဆင်ရန်များ

၁။ မိမိပတ်ဝန်းကျင်ရှိဆင်ခြေလျှောများ၊ ရောင်းစင်
ရေစပ်များတွင် မြေဆီလွှာထိန်းသိမ်းကာကွယ်ရန်
သစ်ပင်များစိုက်ပျိုးပါ။



၂။ မြေထိန်းနံရံများ တည်ဆောက်ထိန်းသိမ်းမှုများတွင်
မိမိတတ်စွမ်းသရွေ့ပါဝင်ပါ။



Historical Flood Analysis Tool



HISTORICAL FLOOD ANALYSIS TOOL

View and Download Data

Draw Polygon

Overlay Layers

Map Data

World Pop Data

Select Years

2000 to 2015

Select Months

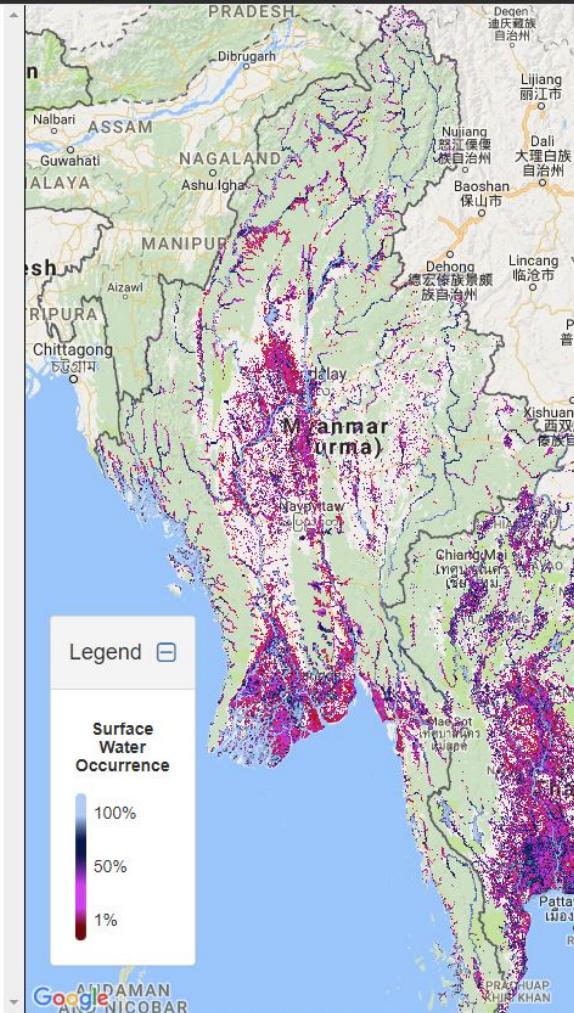
July to July

Select Method for Time Period

Continuous

Update Map

Download Map Data



- Historical Flood Analysis Tool has been developed by the coordination of DDM and ADPC
- is intended to utilize in the actions to be taken on the effective emergency preparedness for response against upcoming water related disasters especially annual floods.

<https://floodtool-servir.adpc.net>

Needs of Flash Flood

- Flash Flood Prone Area Map
- Early Warning for Specific Area
- Hazard Map in each region
- Map of Safety Area from Flash Flood in each region
- Simulation Exercise for Flash Flood

Thank you for your attention