

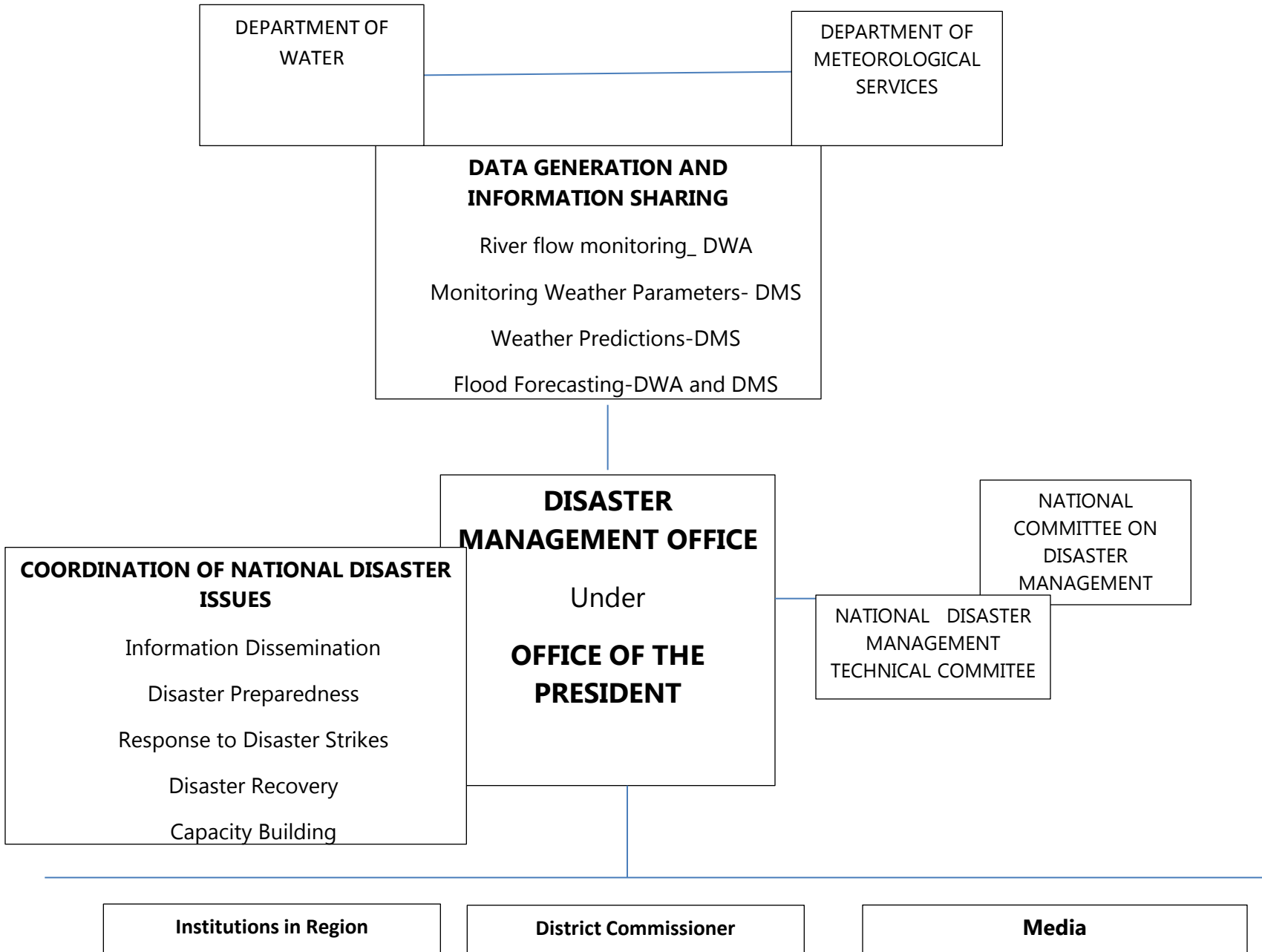
# Early Warning in Botswana

SARFFG and SWFDP TWINNING MEETING  
SWAZILAND  
16-20 JANUARY 2016



# Current Status

- Daily weather forecast
- Hydrological Weekly situational reports- for major rivers and dams
- In case of extreme rainfall- check with SARFFGS for potential flooding
- In case of potential extreme event- Press Release
- Use CAP to disseminate severe weather information



DEPARTMENT OF  
WATER

DEPARTMENT OF  
METEOROLOGICAL  
SERVICES

**DATA GENERATION AND  
INFORMATION SHARING**

River flow monitoring\_ DWA  
Monitoring Weather Parameters- DMS  
Weather Predictions-DMS  
Flood Forecasting-DWA and DMS

**DISASTER  
MANAGEMENT OFFICE**

Under

**OFFICE OF THE  
PRESIDENT**

**COORDINATION OF NATIONAL DISASTER  
ISSUES**

Information Dissemination  
Disaster Preparedness  
Response to Disaster Strikes  
Disaster Recovery  
Capacity Building

NATIONAL  
COMMITTEE ON  
DISASTER  
MANAGEMENT

NATIONAL DISASTER  
MANAGEMENT  
TECHNICAL COMMITTEE

**Institutions in Region**

**District Commissioner**

**Media**

# Future Realistic State

- Localized forecasting model that links rainfall forecasts to flood (eg. HYPE in BOTSWANA)
- Real Time flow monitoring- especially at Dams
- Improve hydro-meteorological network coverage,
- Sensitize public about weather issues
- Improve information sharing with disaster management

# Gaps

- Capacity in understanding forecasts
- Poor Network density to capture localised storms
- Lack of local forecasting model (WRF)
- Only one weather station operates 24/7
- Need more automatic weather stations

# Major Steps To Fill The Gaps

- Secure funding for network improvement, capacity building
- Automatic data transfer between NHS and NMS