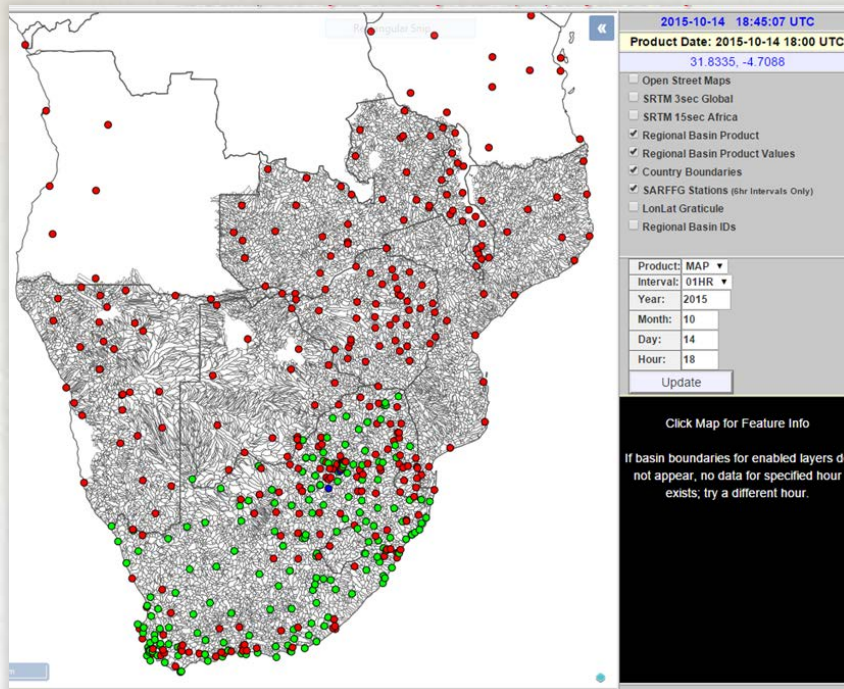


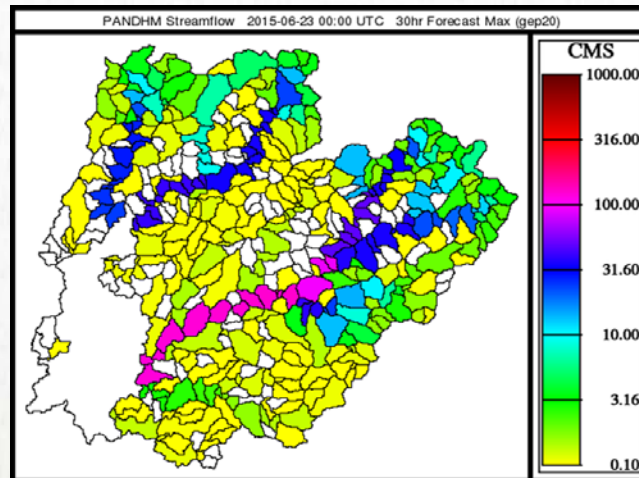
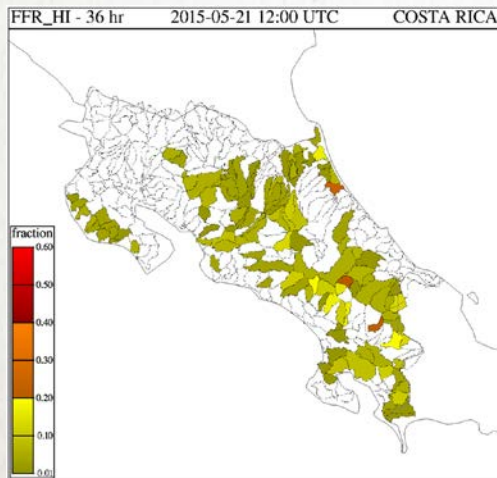
DELIVERY OF WARNINGS OF HYDROMETEOROLOGICAL HAZARDS – SOUTHERN AFRICA REGION

**SWFDP AND SARFFG INTERFACES AND NEW
PRODUCT CONSIDERATIONS**



SARFFG INTERFACE AND NEW PRODUCT CONSIDERATIONS

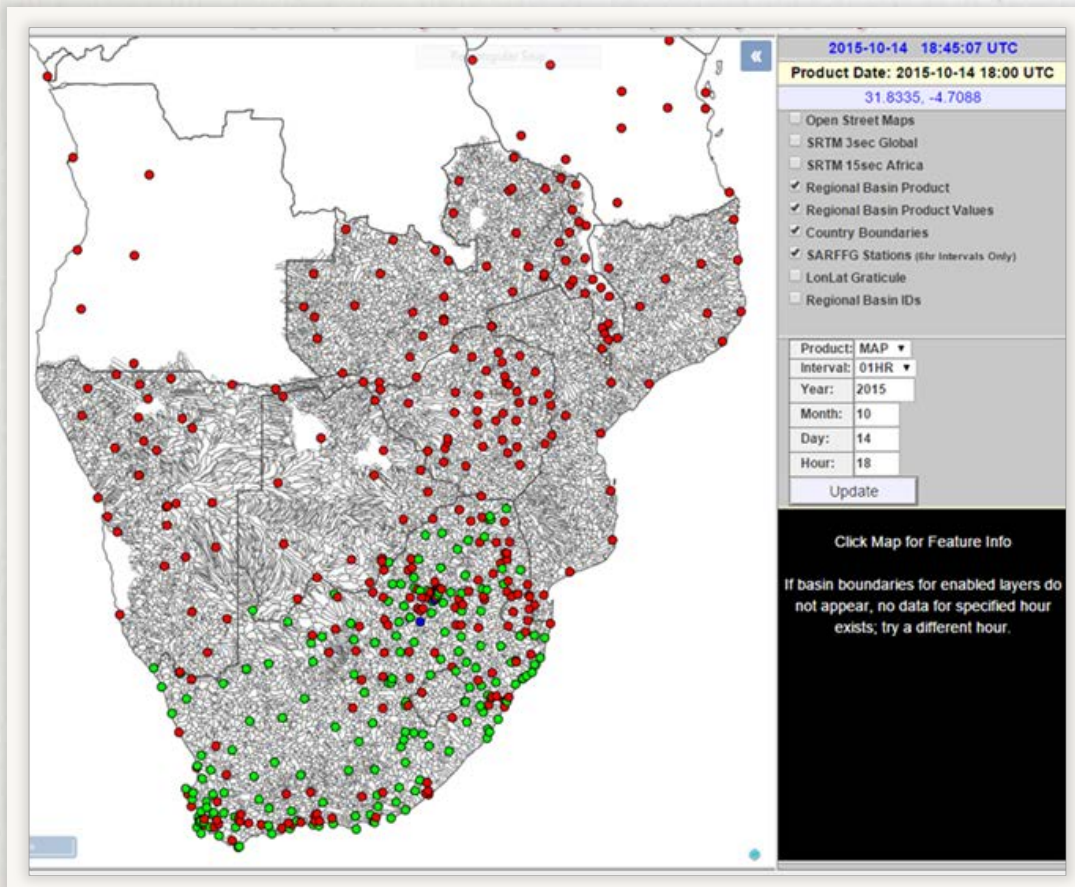
SARFFG Interface Design



Flash Flood Risk Product

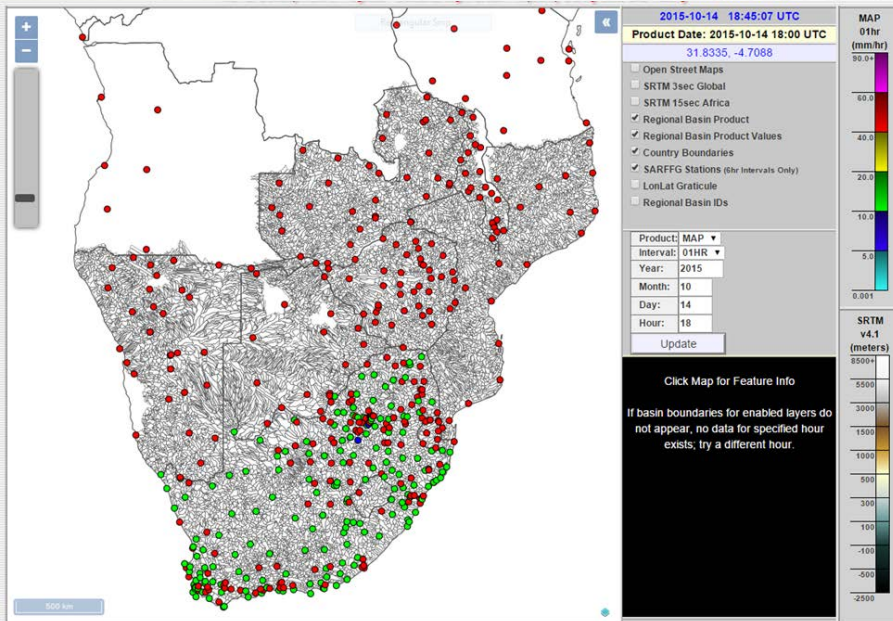
FFG System Routing Component

SARFFG INTERFACE

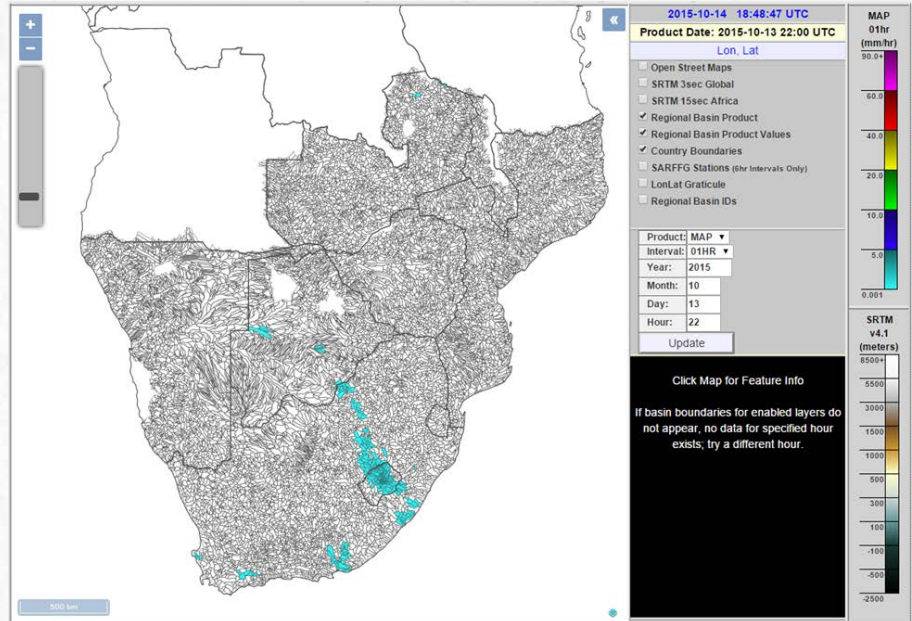


- View SARFFG system products over a variety of user-defined layers
 - Terrain
 - Political Boundaries
 - Roads
 - Cities
- Interactive capability to allow scrolling, zooming
- Data interrogation (e.g., time series displays).

SARFFG INTERFACE

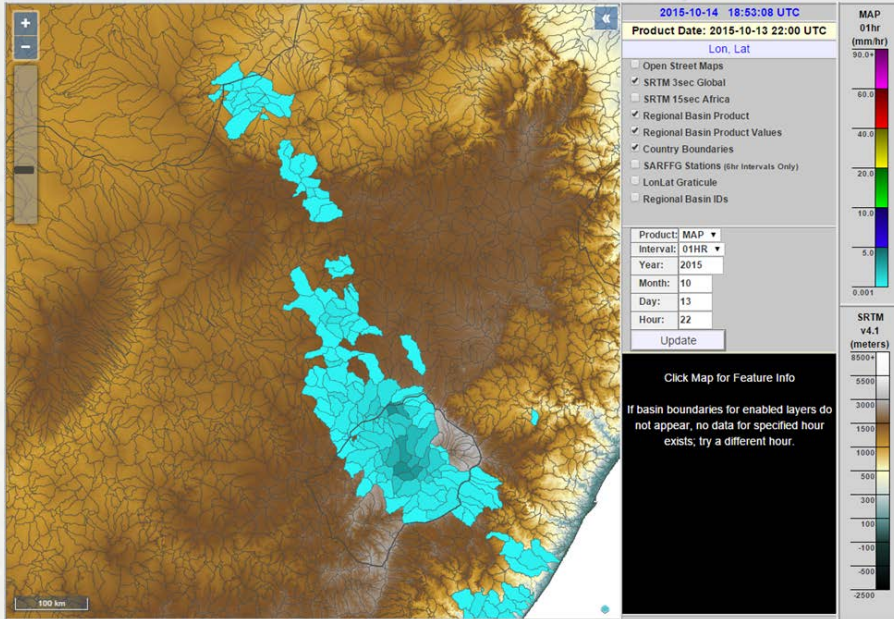


Rainfall Gauge Stations

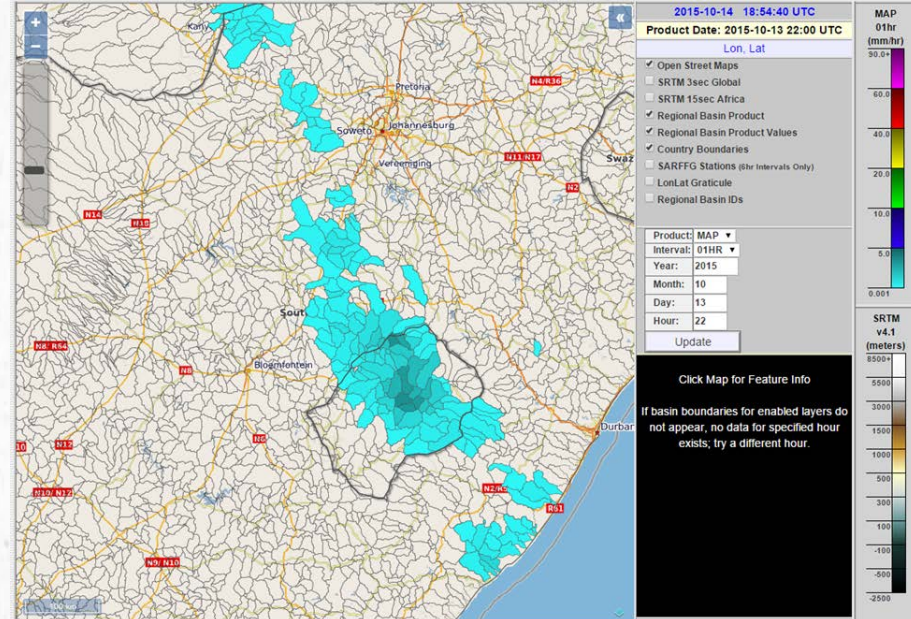


SARFFG Product (MAP)

SARFFG INTERFACE

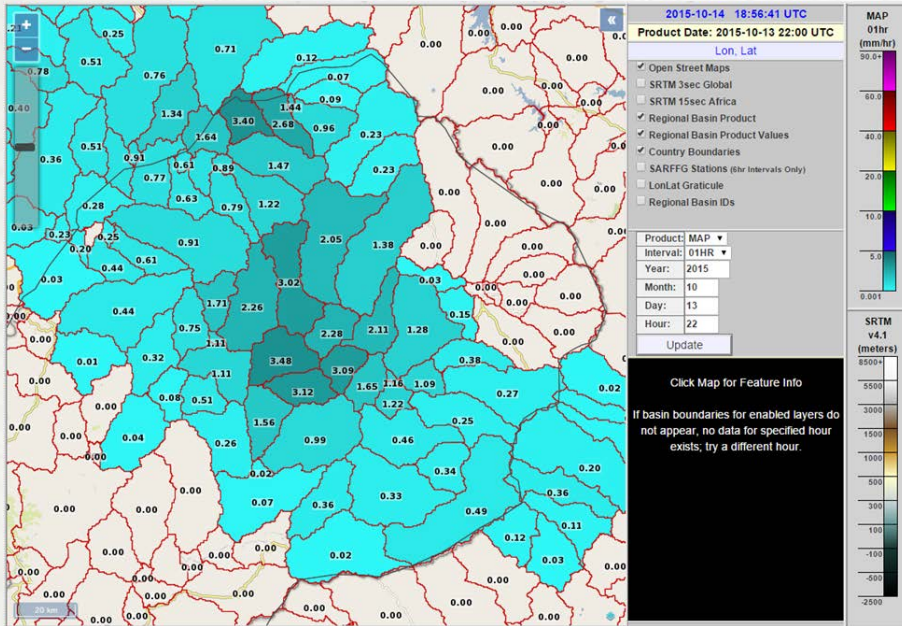


Product, Terrain, Zoom

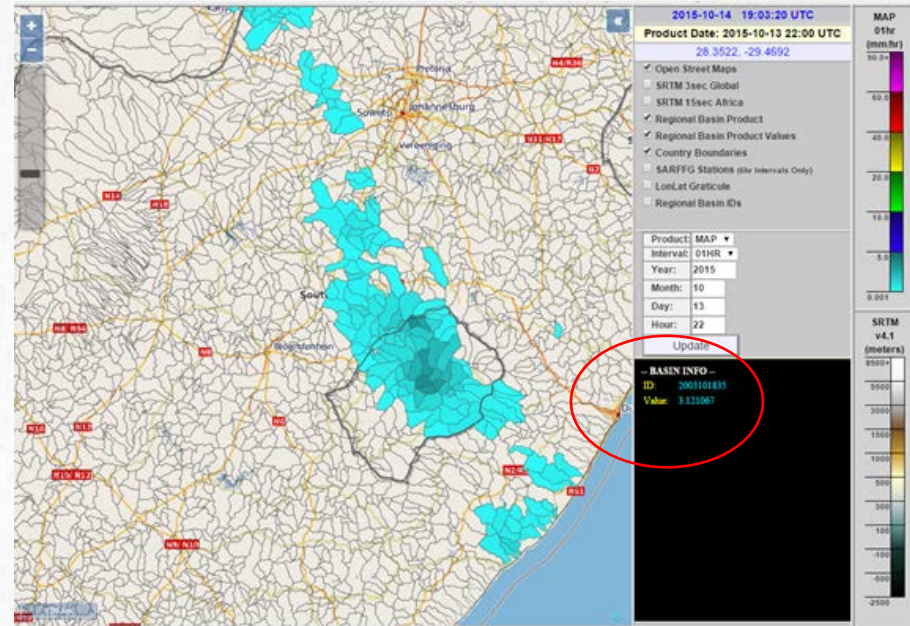


Product, Roads/Cities

SARFFG INTERFACE

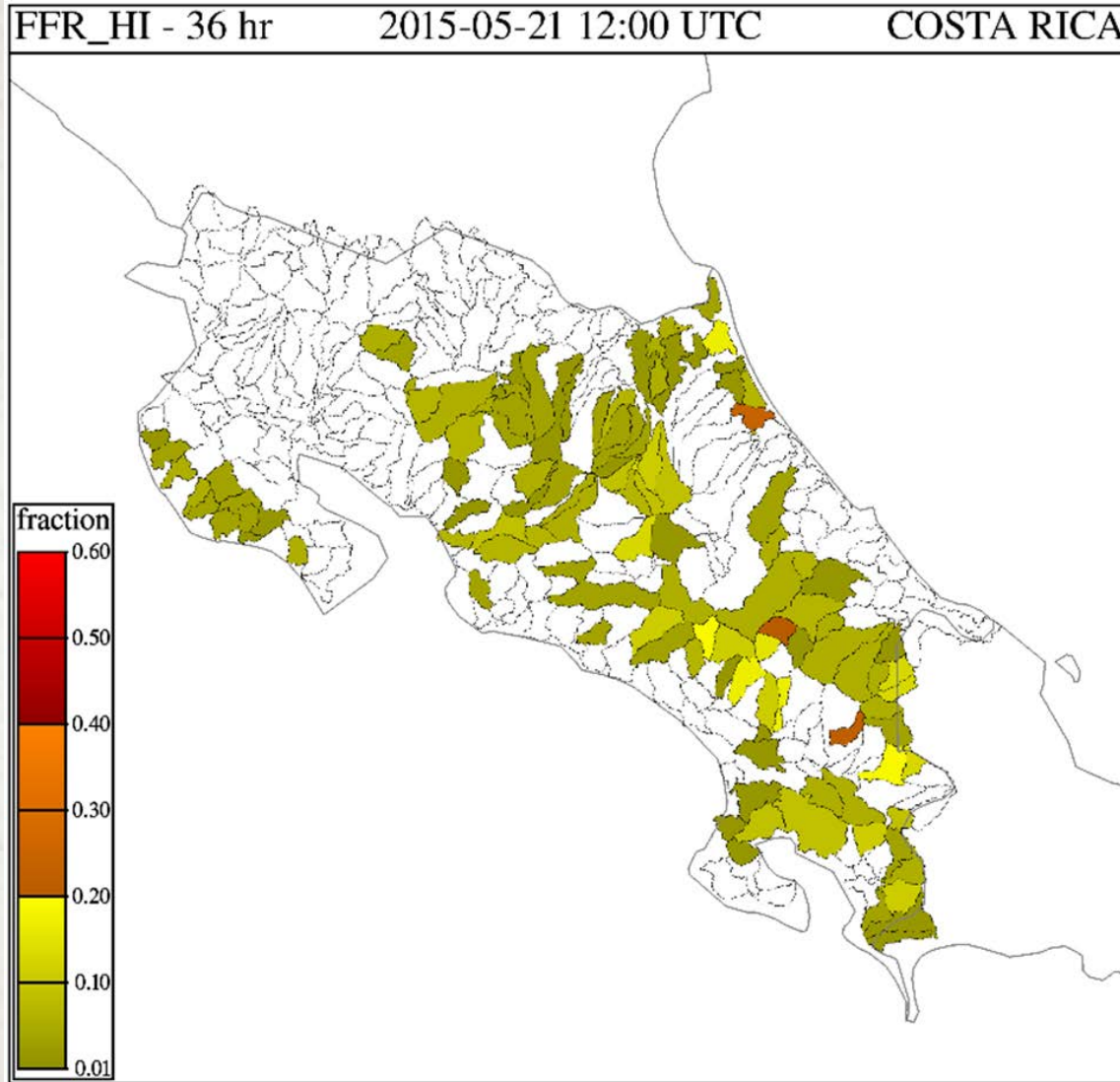


Product, Basin Values,
 Zoom, Roads/Cities



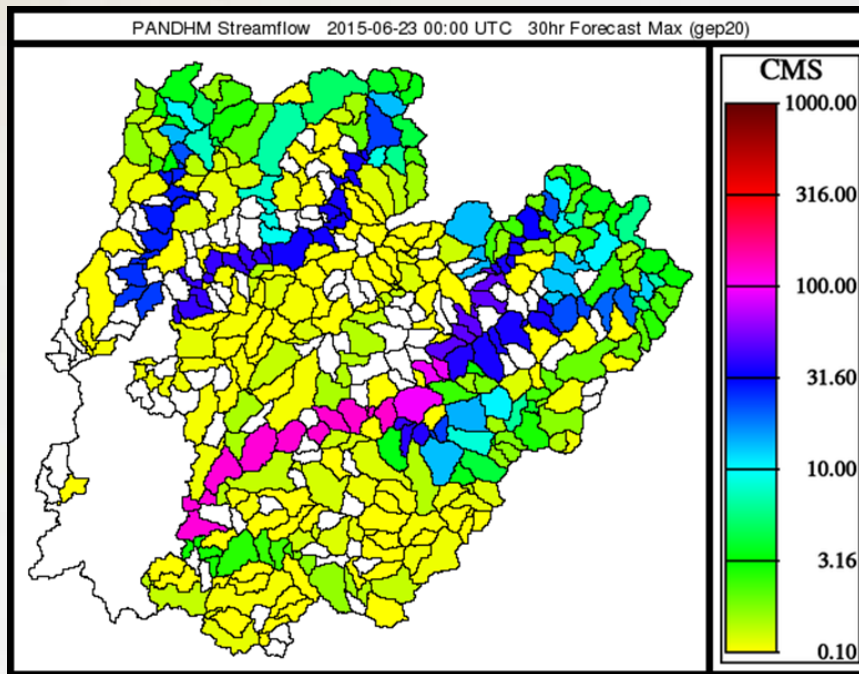
Product, Roads/Cities,
 Single Basin Value (point
 and click)

SARFFG – FLASH FLOOD RISK



36-hour Flash Flood Risk

- Provides flash flood probability by basin for forecast lead times of 12, 24, and 36 hours
- Applies rainfall forecast from mesoscale model (WRF)
- Based on number of FFT occurrences over the forecast period (frequency of positive FFT)
- Could be applied to issue flash flood watches



SARFFG – ROUTING COMPONENT

- Capability to estimate flow discharge at pre-specified locations along the river network of a region
- Provide simulations and forecasts
- Done through the FFG system and is user activated for specific river systems of interest
- Separate interface page for the FFG systems
- Funding for prototype through WMO in next work plan

PANDHM v1.0p - Panama Distributed Hydrologic Model System

Experimental Interface of the Hydrologic Research Center

2024511575 - Chico

Reset to Current Year: 2015 Month: 06 Day: 23 Hour: 00 Submit

-1 Year -1 Month -1 Day -12 Hour +12 Hour +1 Day +1 Month +1 Year

2015-06-23 00:00 UTC - Streamflow Forecast Ensemble - Outlet 2024511575

