

New Product considerations for integrated SWFDP and SARFFG

Eugene Poolman

Chief Forecasting: Disaster Risk Reduction

South African Weather Service

RSMC Pretoria



INTEGRATING SWFDP RAINFALL MAPS INTO SARFFG – CFFT PRODUCTS

FCAST-PRES-20141021-001.1

SWFDP Guidance

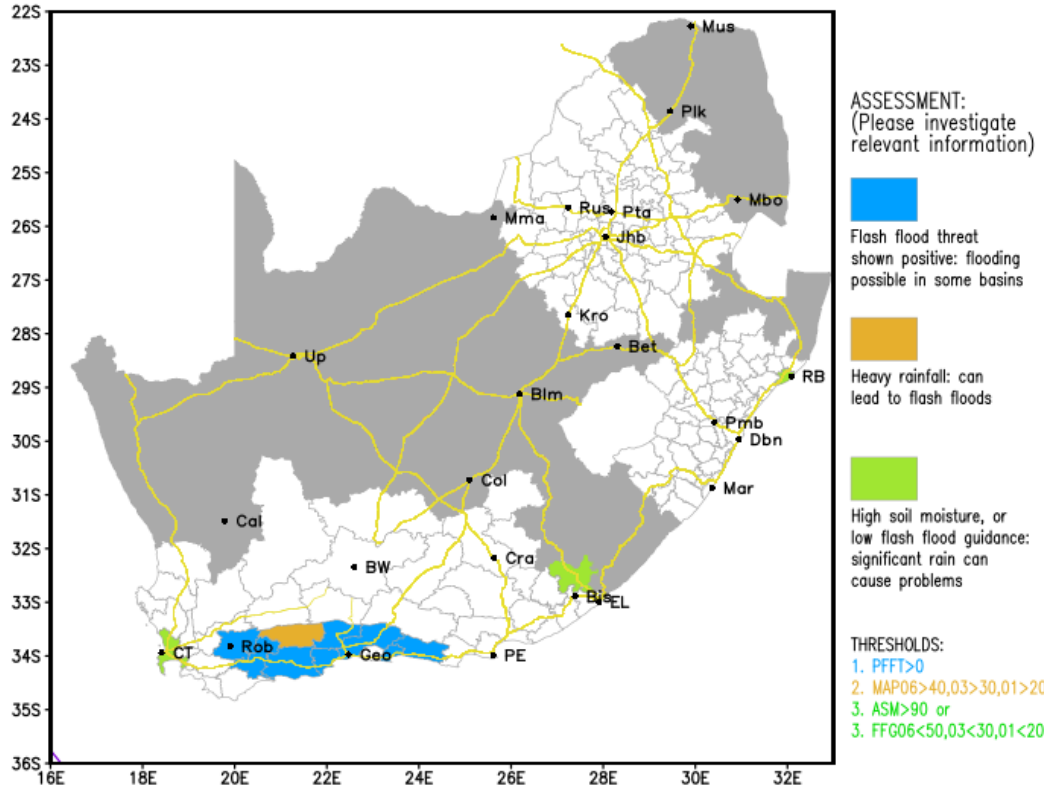


QUICK MAPS

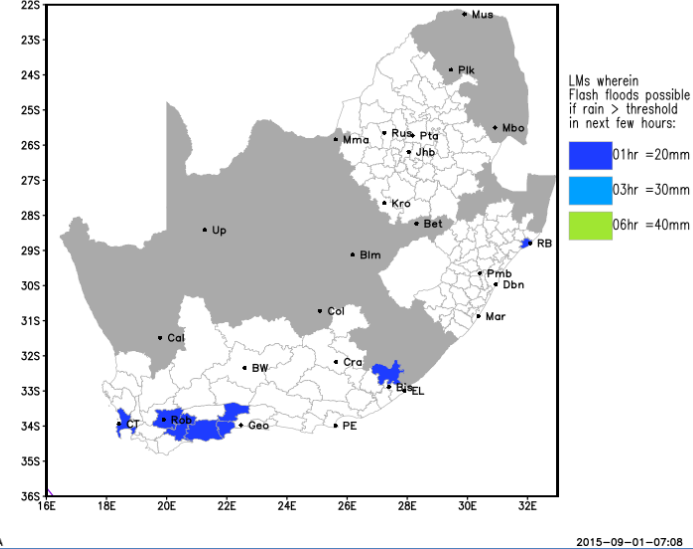
FCAST-PRES-20141021-001.1

“Heads up” products for forecasters and disaster managers

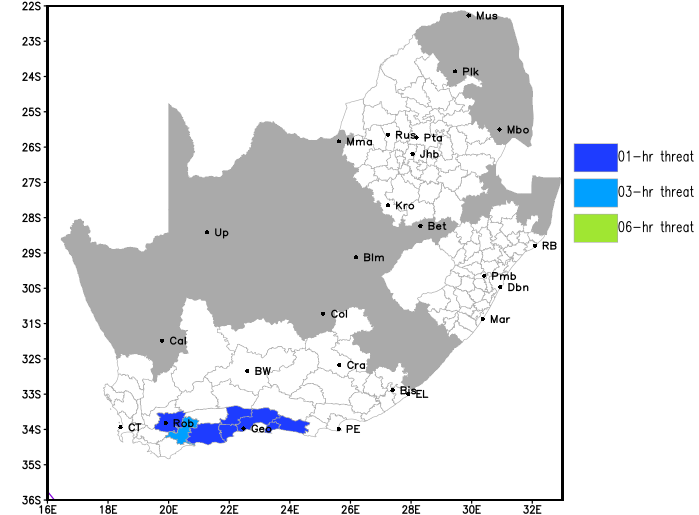
SAFFG: LM 1,3,6hr Flash Flood Overview 20150901 01UTC



SAFFG Local Municipalities: FFG Summary 20150901 01UTC



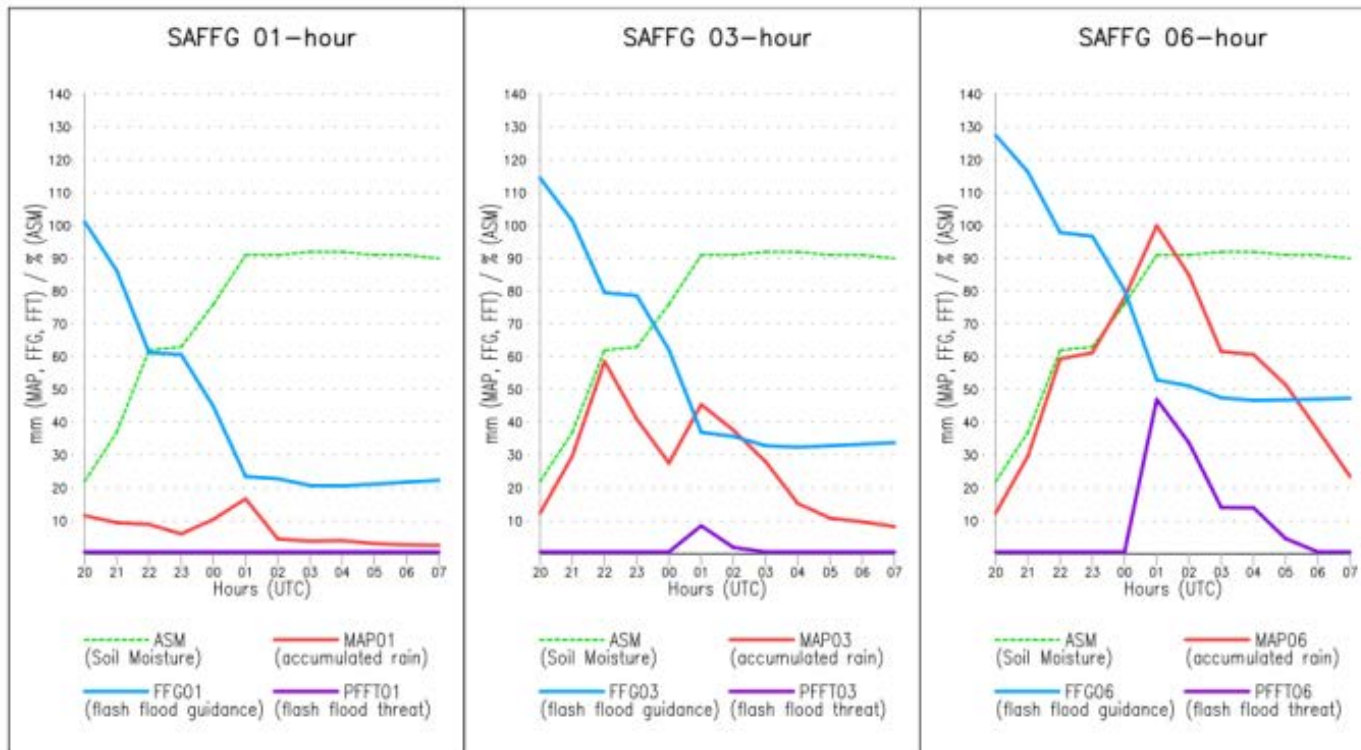
Local Municipalities FFT Summary for 20150901 01:00 UTC



Impact Information



SAFFG FFGgram (Time Series)
 Location: Grootbrakrivier (basin 2002001116)
 Date: 20150901 07h UTC

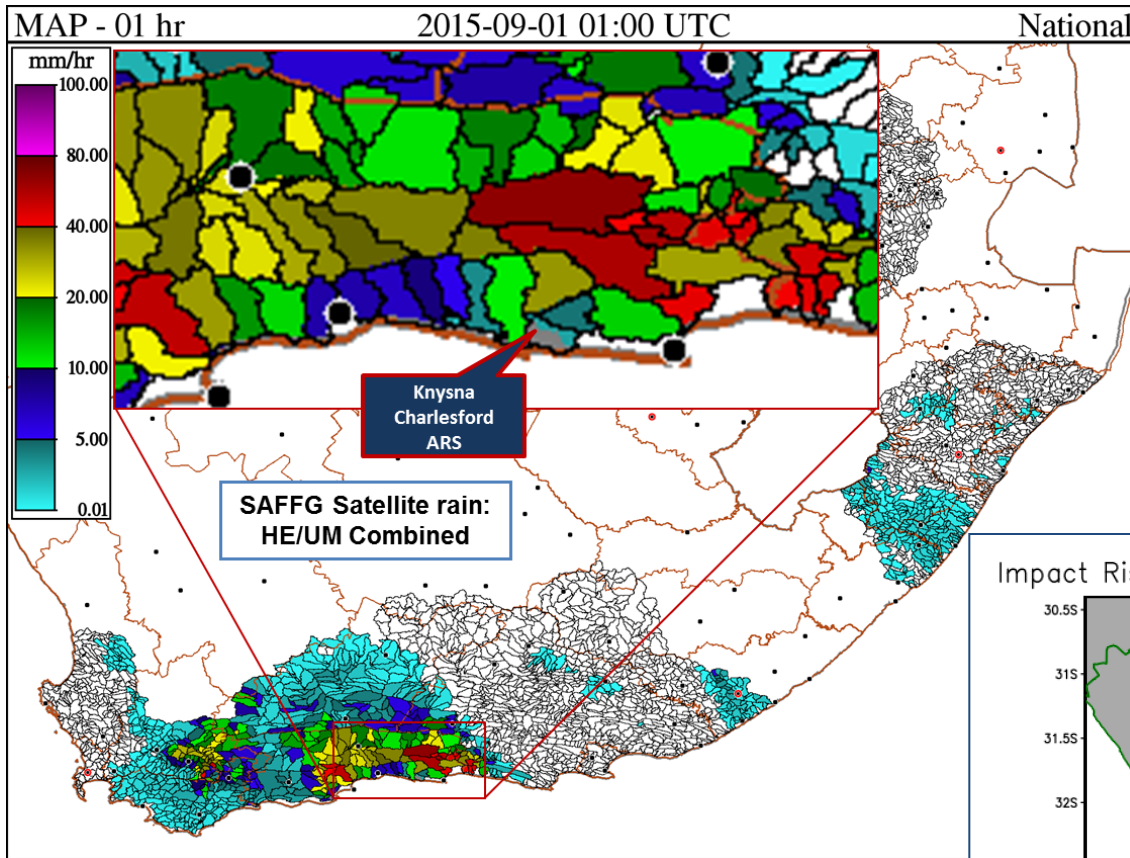




IMPACT-BASED FORECASTING SUPPORT PRODUCTS

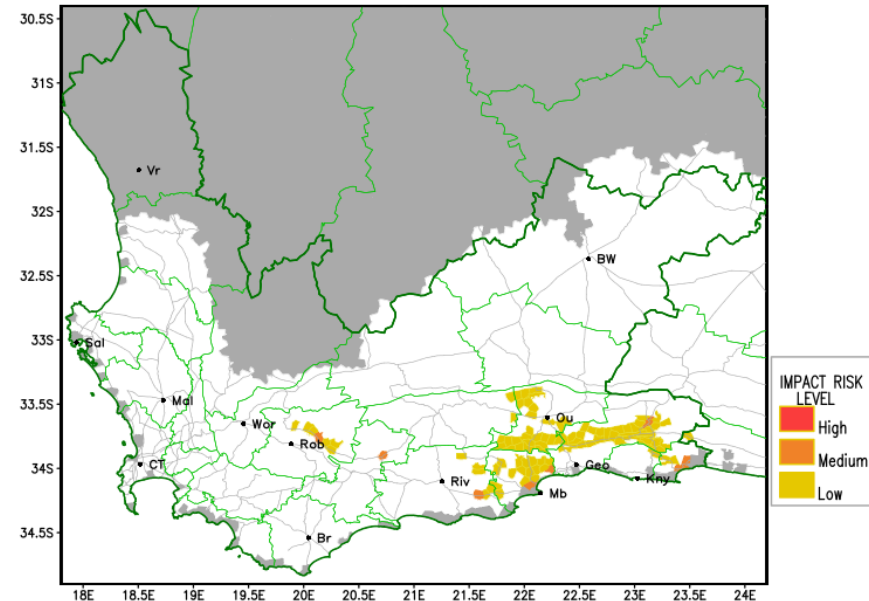
FCAST-PRES-20141021-001.1

Impact-based Forecasting Info



- 1 Sept 2015, Cape South Coast, Cut-off Low
- Various roads and bridges closed between Mossel Bay and Plettenberg Bay

Impact Risk Level: Flash Flood (06hr SAFFG) 20150901 02 UTC



Conclusion

- SWFDP guidance supports INAM with weather forecast guidance and products
- SARFFG provides hydrological guidance to INAM of potential flash floods
- Twinning project by WMO of integrating systems of SWFDP and SARFFG, including enhanced user products
- Supported by technological enhancements
 - NWP enhancement to 4km resolution in 2016 operational
 - Increased lead time for SARFFG
 - Additional products for forecasters and users



Thank you