



SECOND STEERING COMITEE MEETING
HAITI AND DOMINICAN REPUBLIC
FLASH FLOOD GUIDANCE (HDRFFG)

SANTO DOMINGO, DOMINICAN REPUBLIC
12-14 FEBRUARY 2018

Forecasters: Marie Carmelle V.Chery
Wilner Polydor
Nicole Francois

NEW BUILDING OF Haiti National WEATHER SERVICE



INTRODUCTION

Haïti de par sa position géographique est situé dans une zone de trajectoire cyclonique, elle est classée, parmi les pays les plus exposés à de multiples risques naturels selon une étude de la Banque mondiale relative à la cartographie et aux catastrophes naturelles. En effet, depuis plus de deux décennies on assiste à une disparition presque totale de nos réseaux de contrôle de mesures, hydrographiques, à une détérioration des infrastructures de surveillance hydrométéorologique. Certains ont été vandalisés suite à l'instabilité politique du pays, d'autres ont disparus par suite de catastrophes naturels. Face à ces problèmes cruciaux qui ont affecté considérablement notre pays, il fallait trouver un issu en vue de sortir le pays de cet impasse difficile pour le placer sur la voie d'une stratégie efficace pour l'adaptation au changement climatique. Ainsi, a vu le jour la naissance de l'Unité Hydrométéorologique regroupant les services de la météo et des ressources en eau. Et ceci, en vue de renforcer les systèmes de surveillance des paramètres hydrométéorologiques et climatiques, des mesures d'observation et de contrôle à l'échelle nationale.

Activités en cours

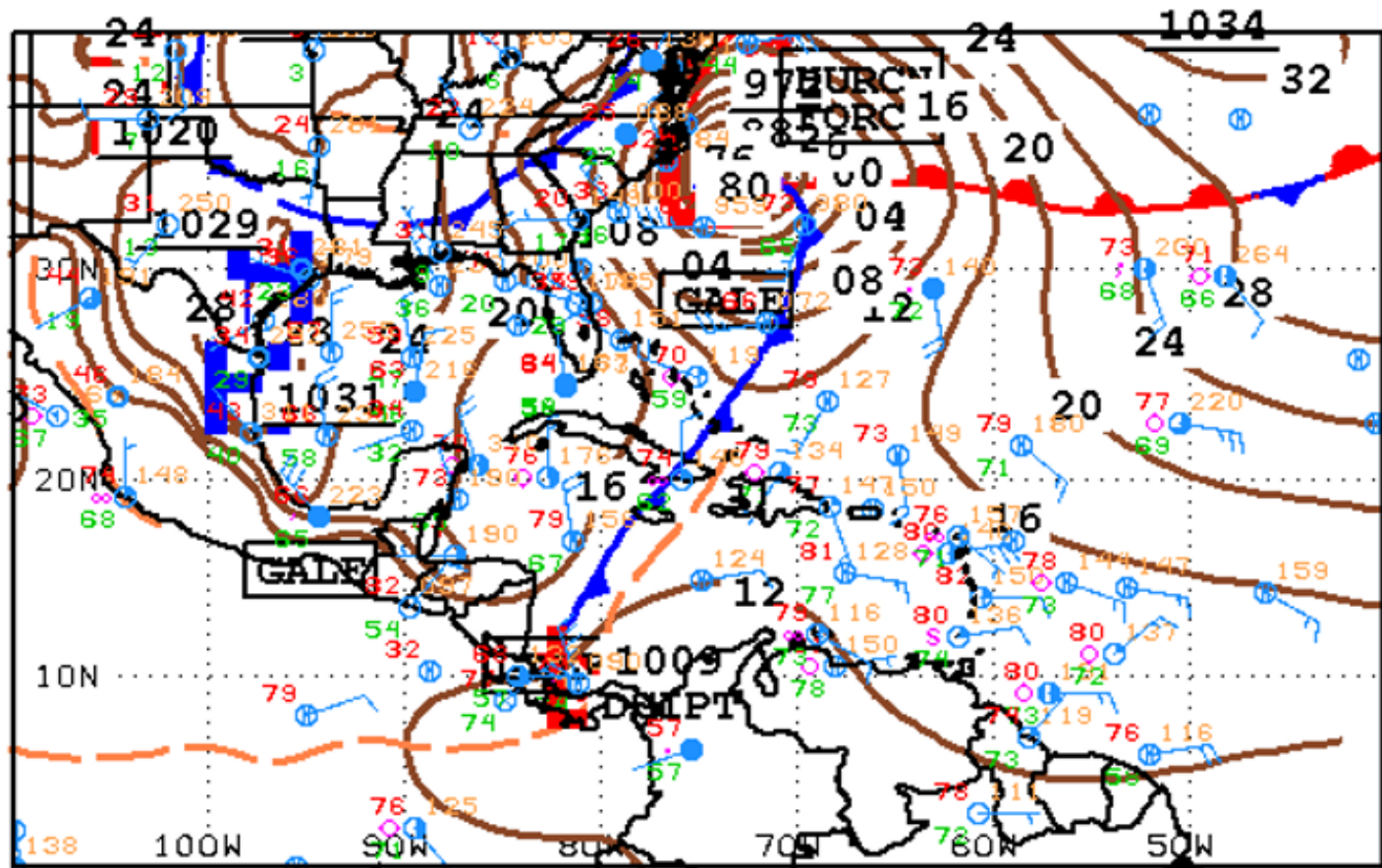
- Le projet de l'OMM soutenu par l'environnement Canada
- Le projet Hydromet de la Banque Mondiale
- Le projet de coopération Sud Sud Fbf (financial basing and forcasting) avec Cuba implementé par World Food Program

Case Study, 2018, January, 4th

A cold Front was moving over the western Cuba and would concern Haïti 48 hours later with strong activities of Showers And Thunderstorms and then caused so much damages over the Southern and the Northwestern part of the Country.

In Fact, I propose you a look of that situation throuh the followings slides.

The synoptic map describes the cold front approaching the Windward passage at 10:30 utc and moving slowly through Haiti

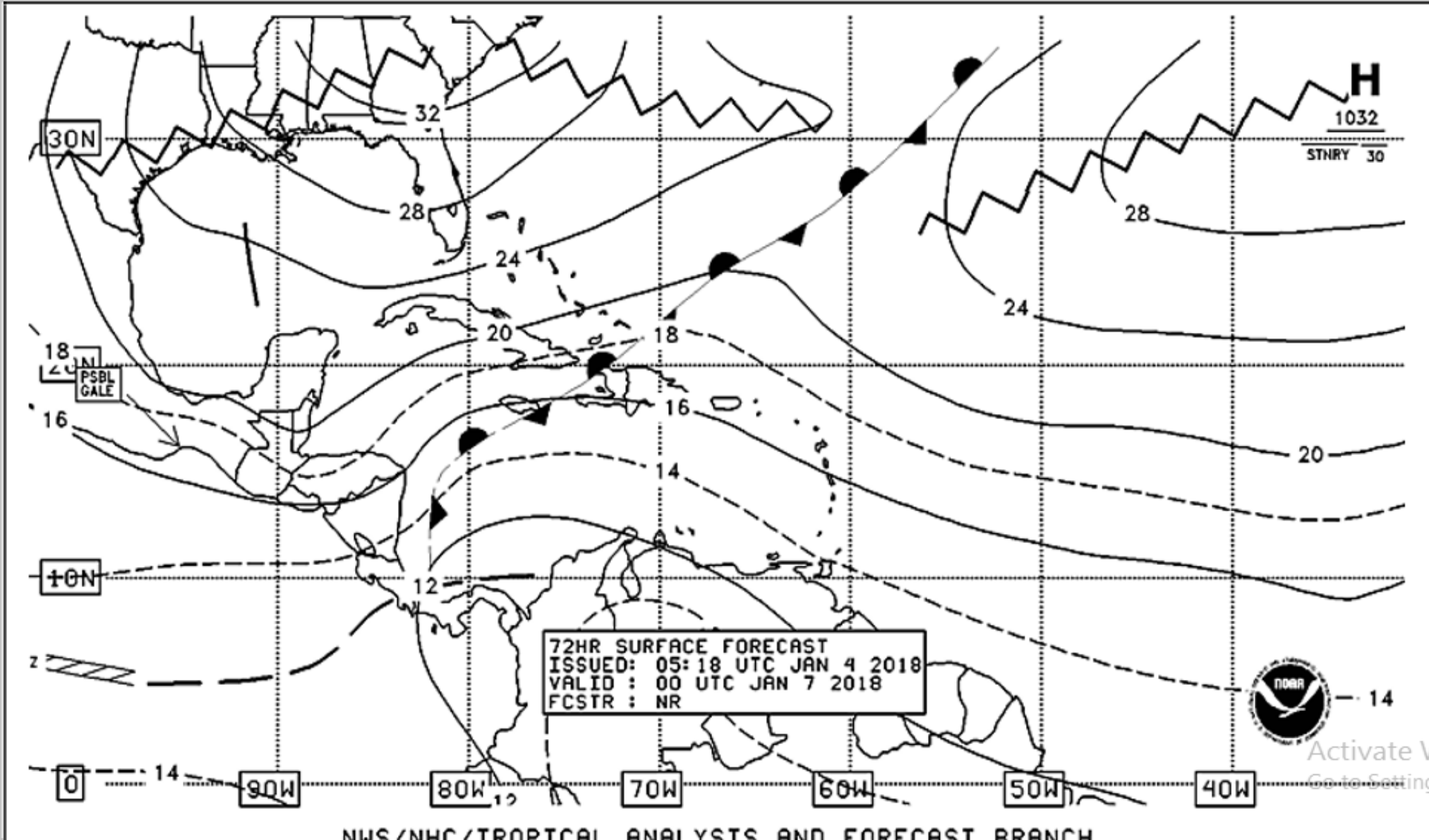


06Z SOUTHWEST NORTH ATLANTIC SFC ANALYSIS
 ISSUED:
 Thu Jan 4 10:08:30 UTC 2018

NATIONAL HURRICANE CENTER
 MIAMI, FLORIDA
 BY TAFB ANALYST: NR
 COLLABORATING CENTERS: NHC OPC

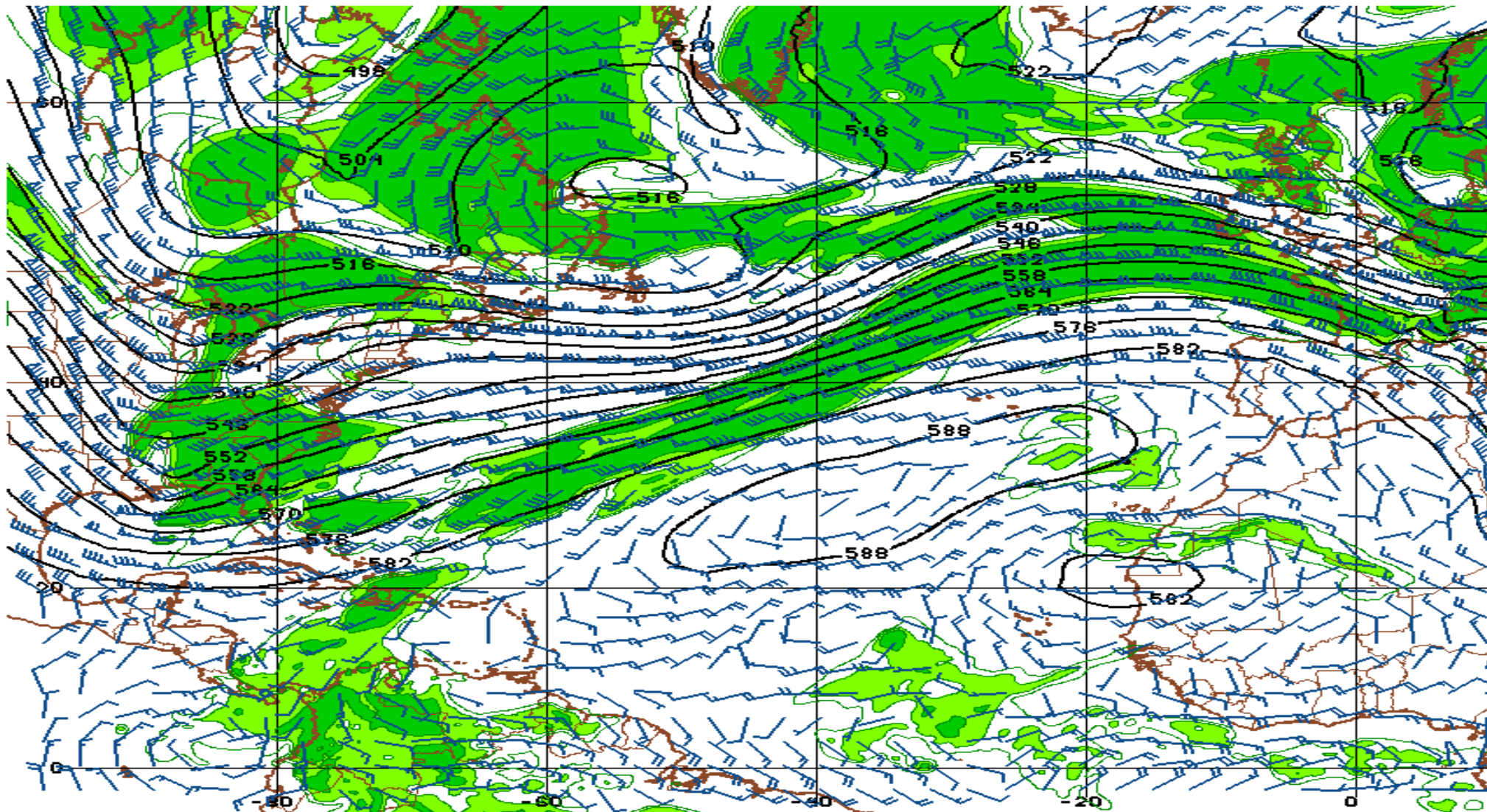
Activate
 to Start

The synoptic map describes the cold front in the Windward passage at 05 utc and moving slowly through Haiti



Humidity 500 MB

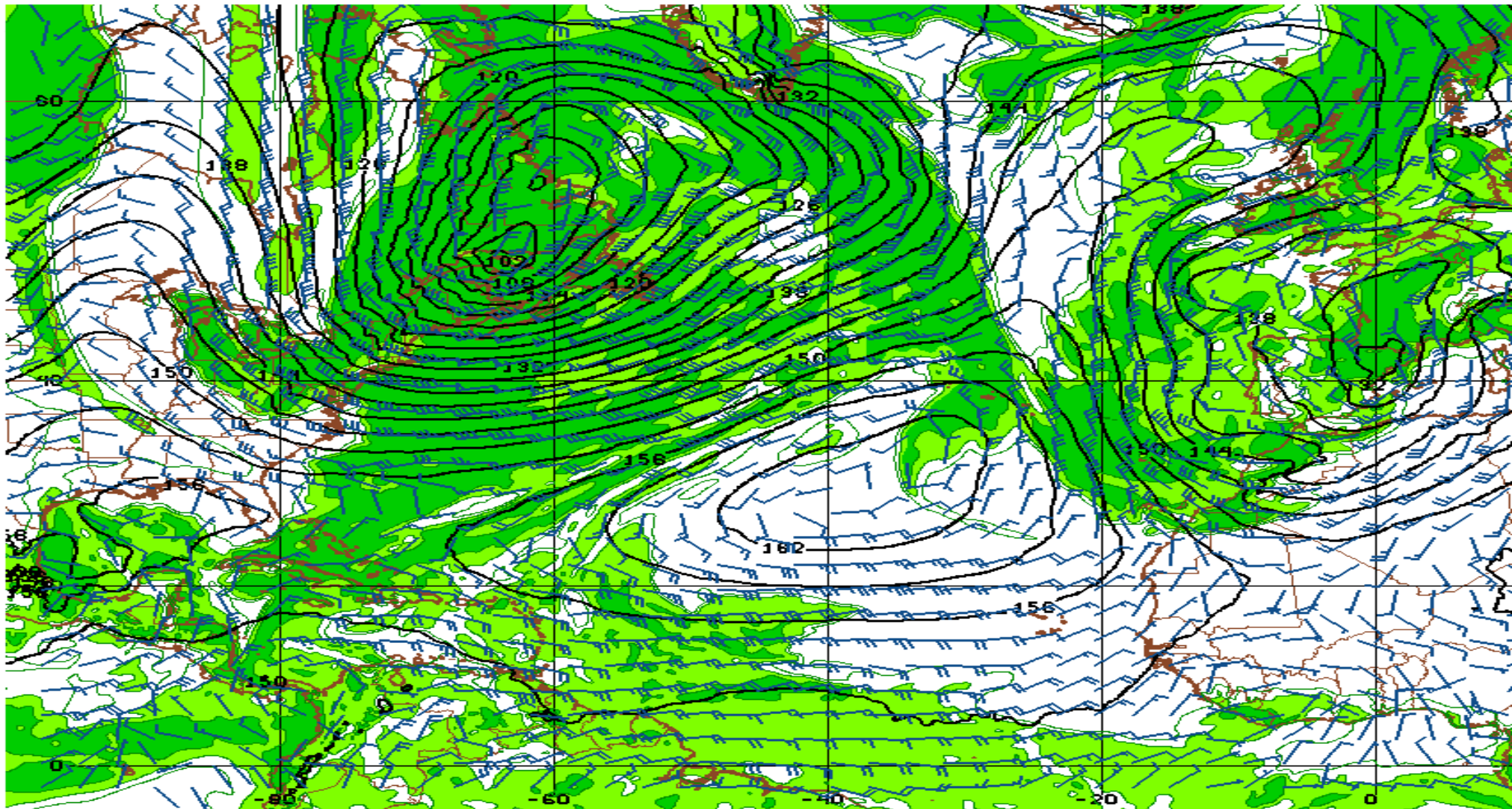
01/03/18 12UTC 000HR FCST VALID WED 01/03/18 12UTC NOAA/NWS/NCEP



180103/1200V000 GFS 500MB HEIGHT AND REL HUMIDITY

Humidity 850 hpa

01/04/16 12UTC 048HR FCST VALID SAT 01/06/16 12UTC NOAA/NWS/NCEP

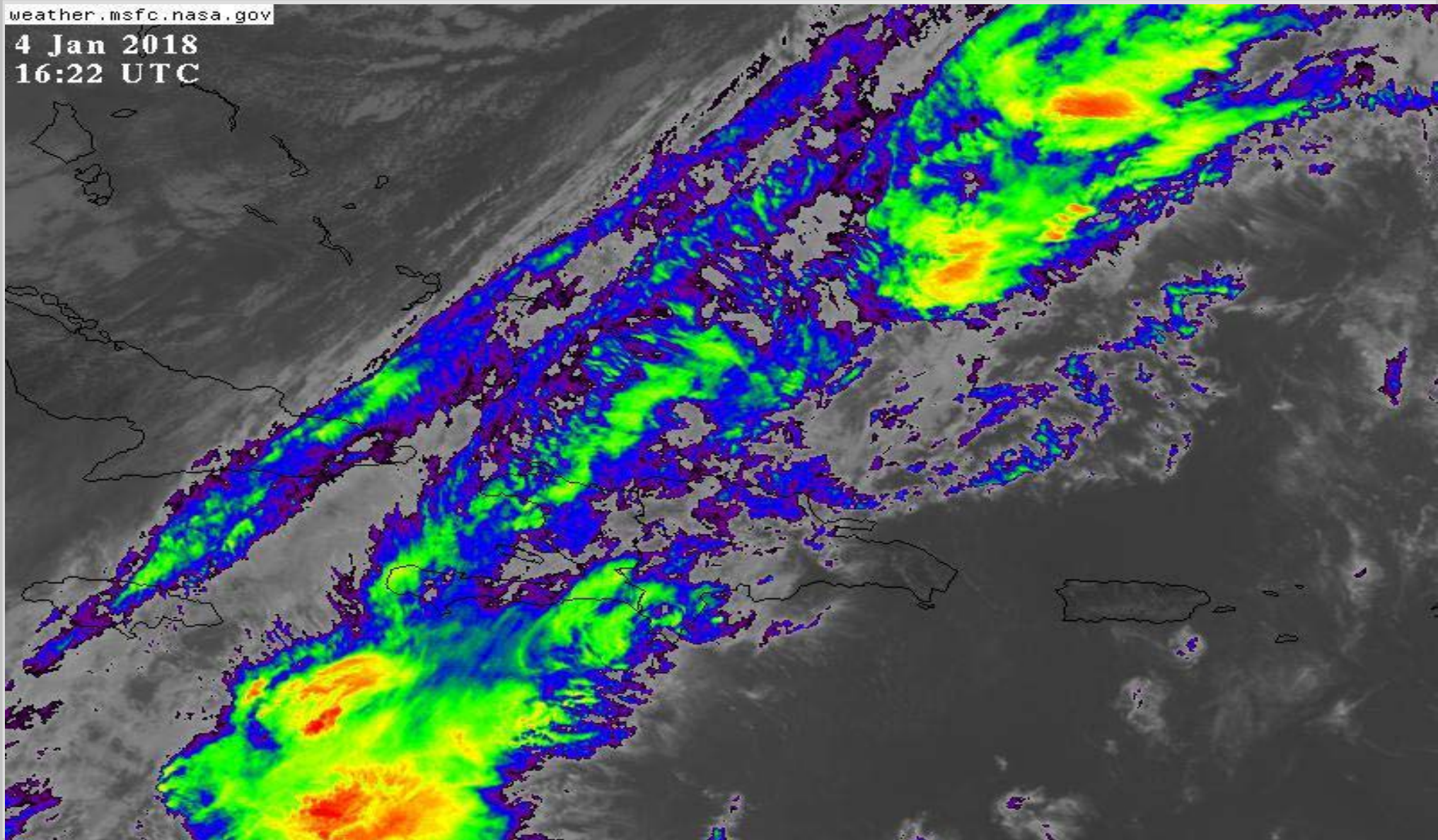


180106/1200V048 GFS 850MB HEIGHT AND REL HUMIDITY

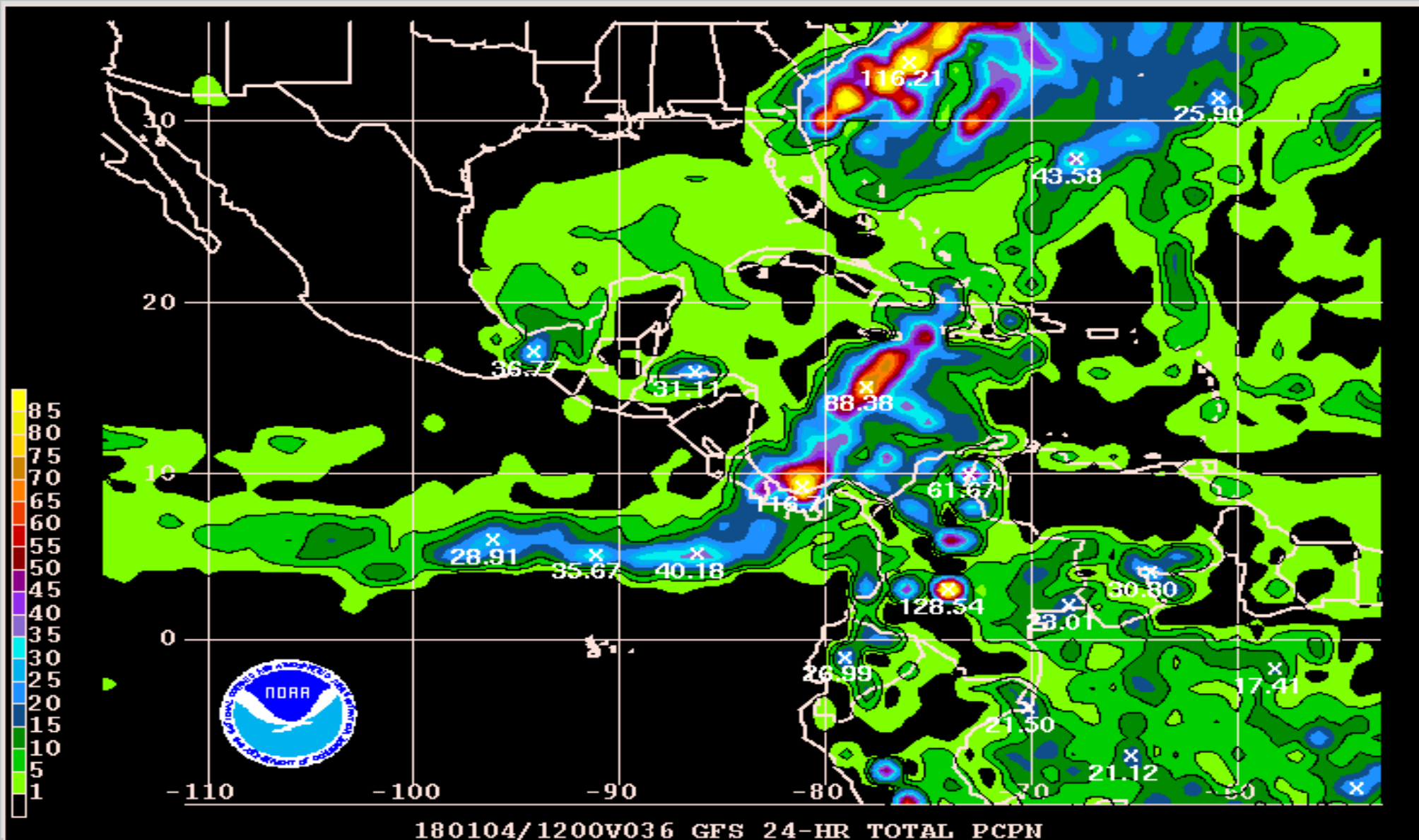
Satellite product from NOAA relative to this event

weather.msfc.nasa.gov

4 Jan 2018
16:22 UTC



Early in the morning very strong CB have moved over the country and produced a lot of rainfall



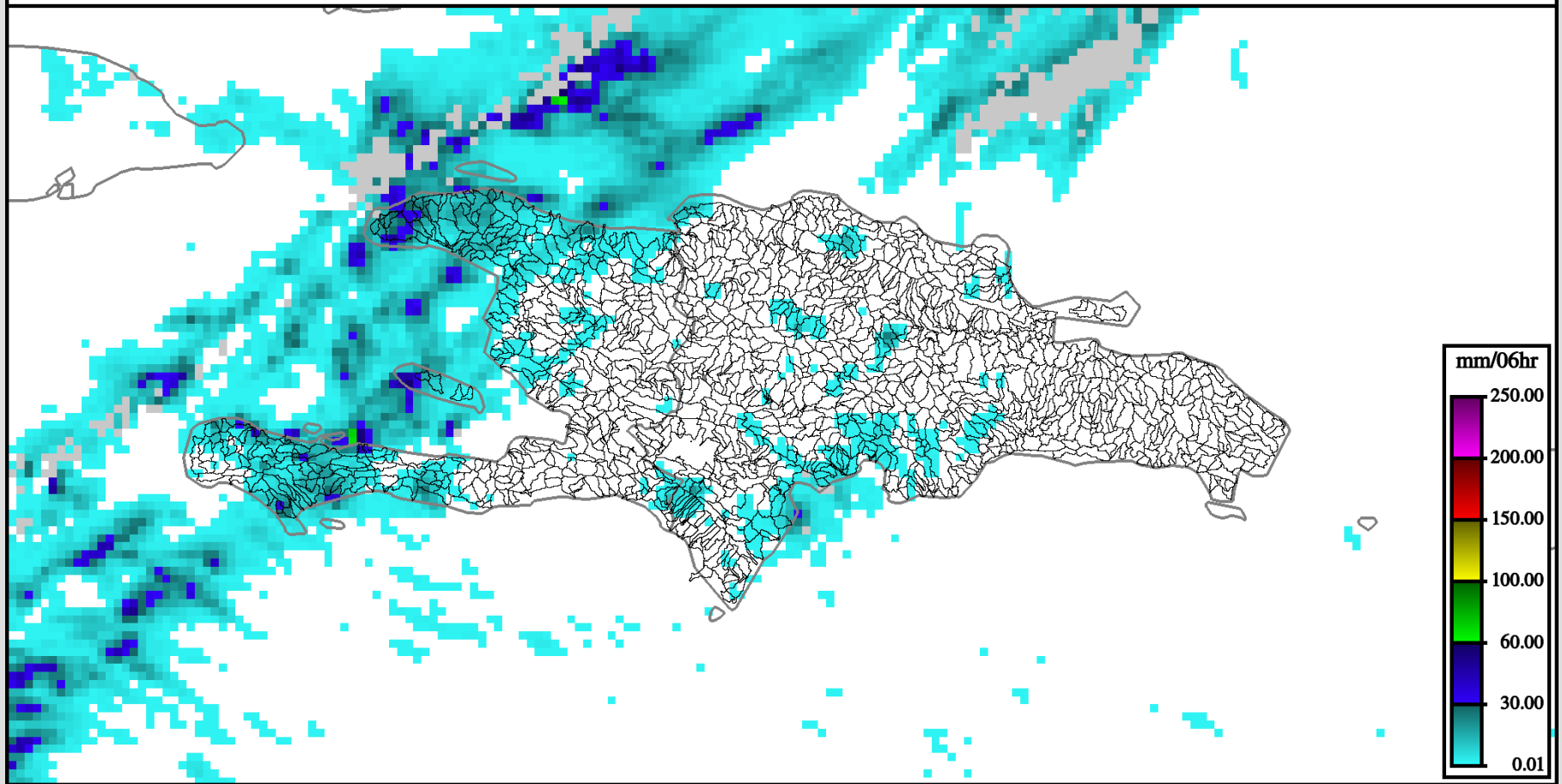
How FFGS dealed with this event?

Forecasted Precipitation in six hours

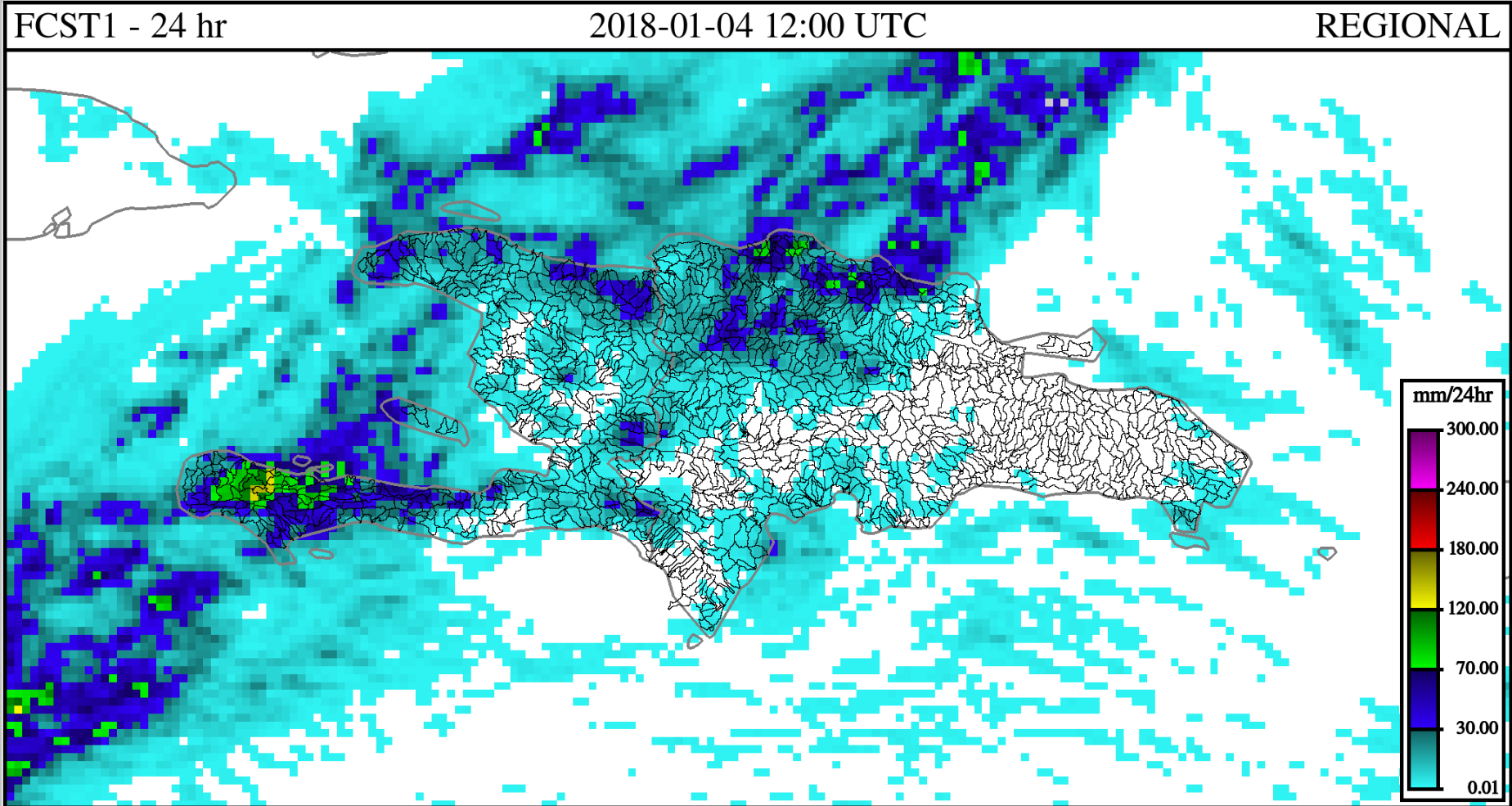
FCST1 - 06 hr

2018-01-04 12:00 UTC

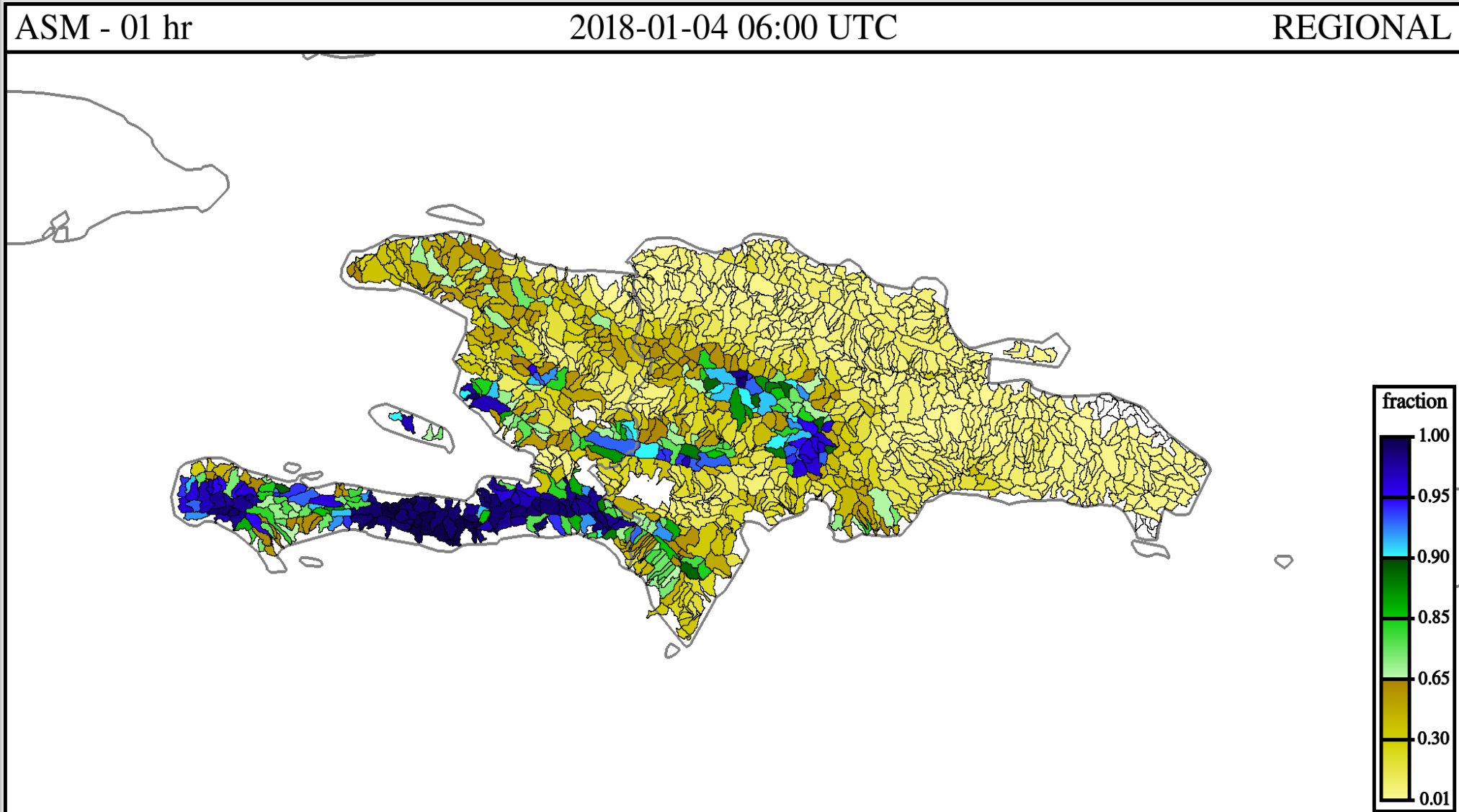
REGIONAL



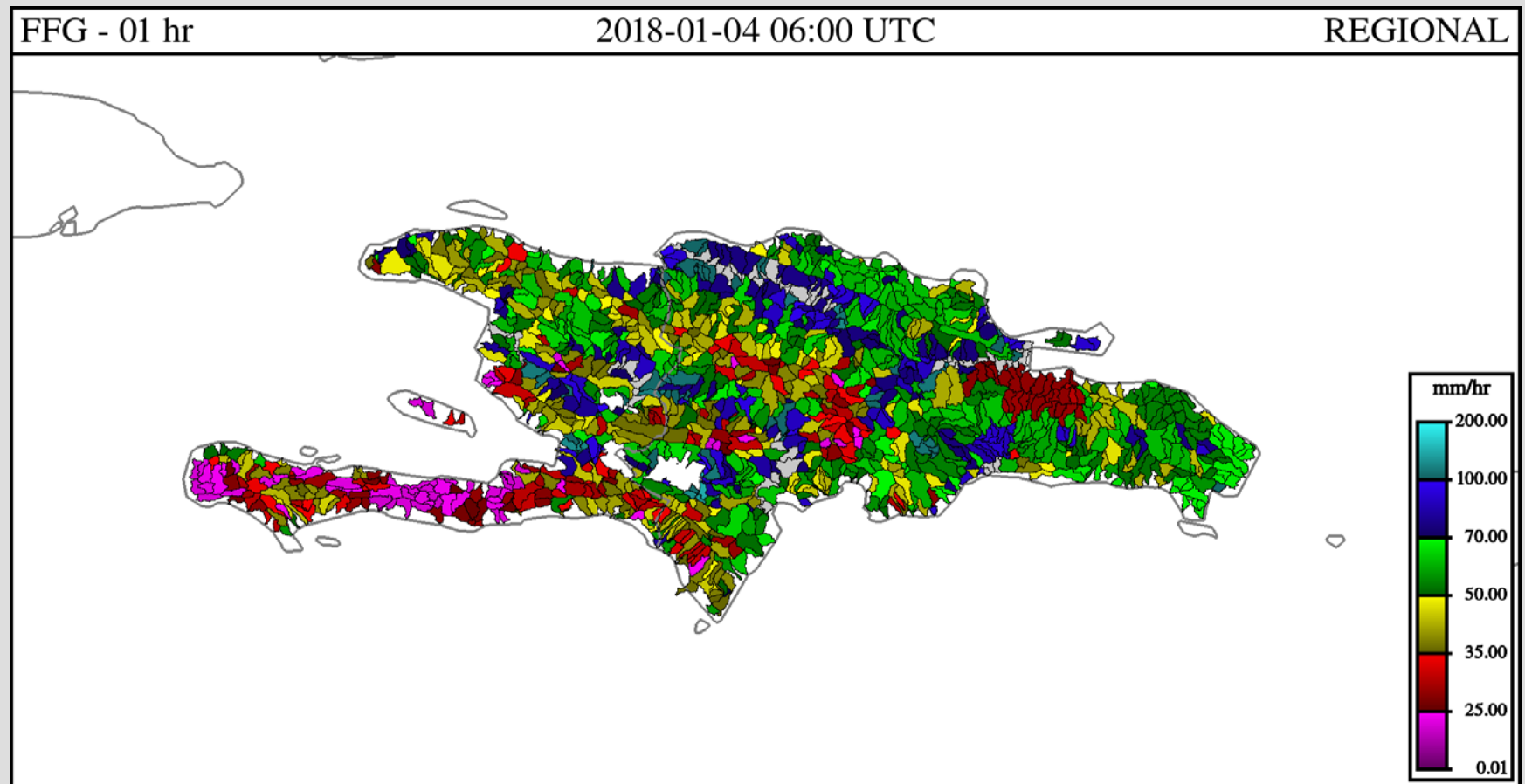
Forecasted Precipitation in 24 hours



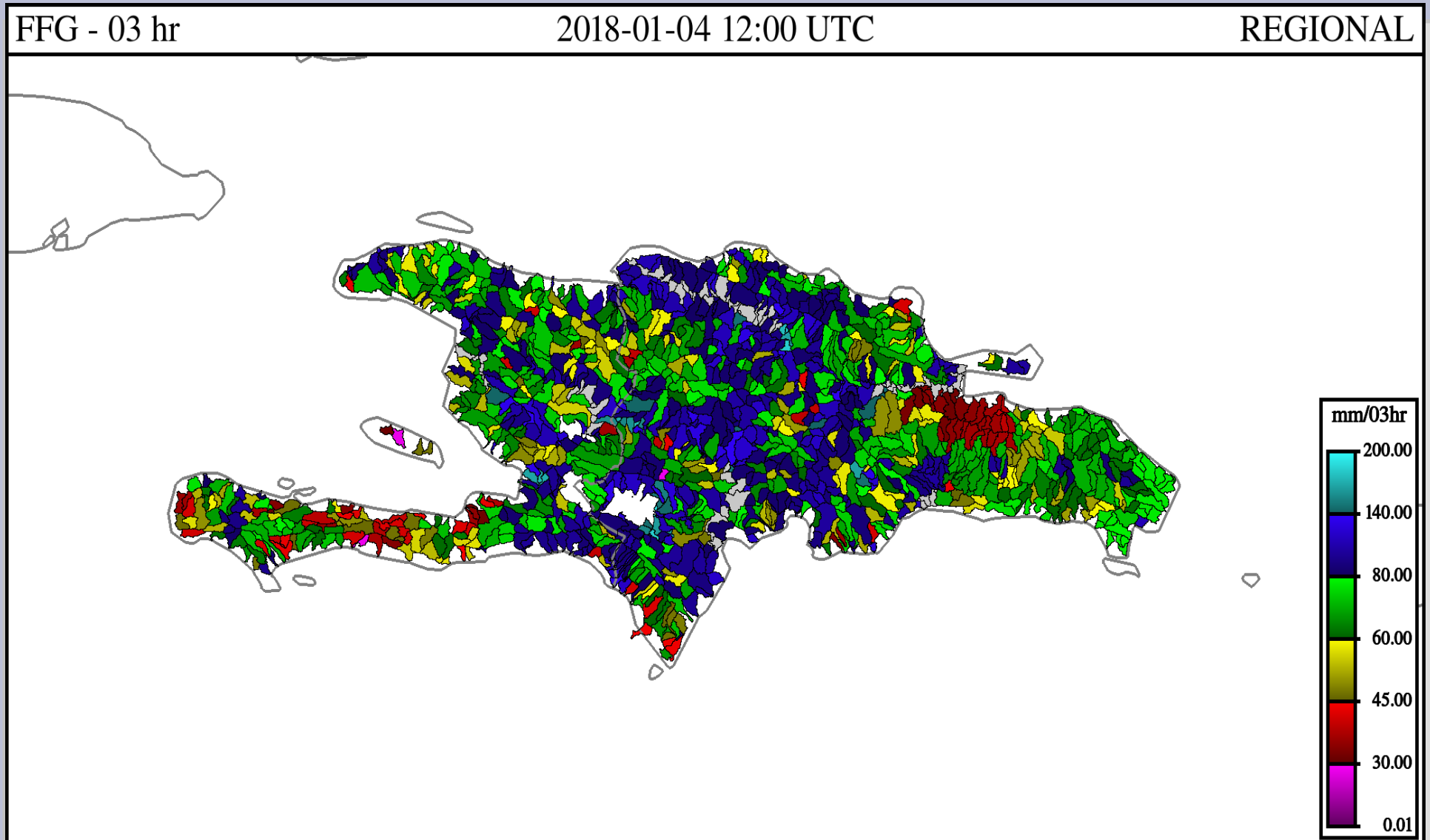
Soil condition Moisture (ASM) let's understand how the level of saturation is high over the whole south peninsula and other places in the Central, West part almost 100/100.



FFG values were very low over the same regions



Three hours later some FFG low values were still persistent in the southern part and somewhere else.



General Forecasting Bulletin issued by the National weather Service.

An active cold front accross the Windward Channel today and moving to Hispagnola bringing heavy activities of showers and thunderstormes over Haïti today. Therefore, some of departements are likely to affected by flash flooding and lanslid during the passage of this front.

Flash Flooding Warning

The Hydrometeo service (HMU) in partnership with the Civil Protection (DPC) and the Permanent Secretariat of Risk and Disaster Management (SPGRD) recommend to all people living near areas at risk to be vigilant and apply all safety conditions because of these frequent showers over the country. This warning is issued for all the country but the south peninsula is more concerned.

THANK YOU !!!!!