

An aerial photograph of a dam with water cascading over it, creating white foam. The water is a deep blue-grey color, and the sky is a lighter, hazy blue. The dam structure is visible on the left side of the image.

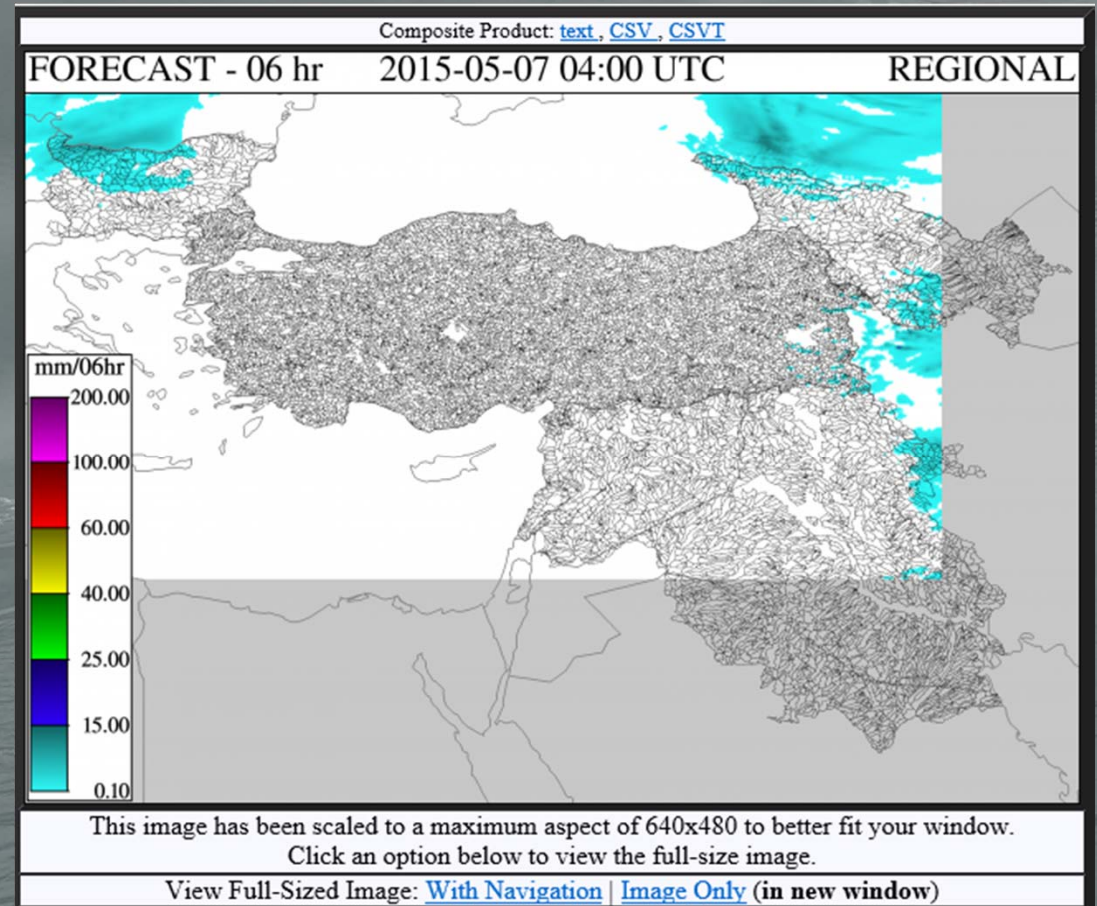
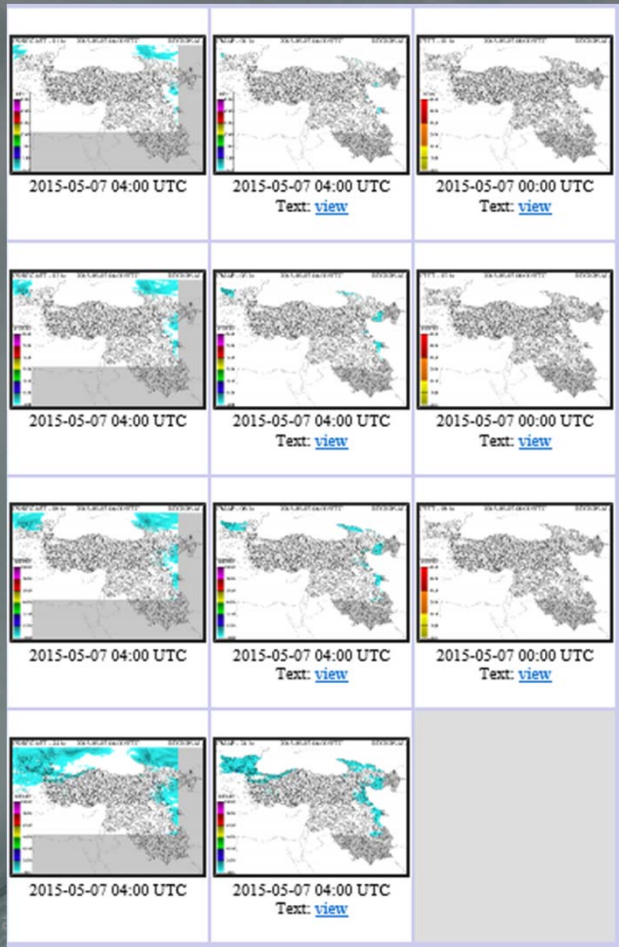
Quantitative Precipitation Forecasts (QPF) in FFGS

HYDROLOGIC RESEARCH CENTER

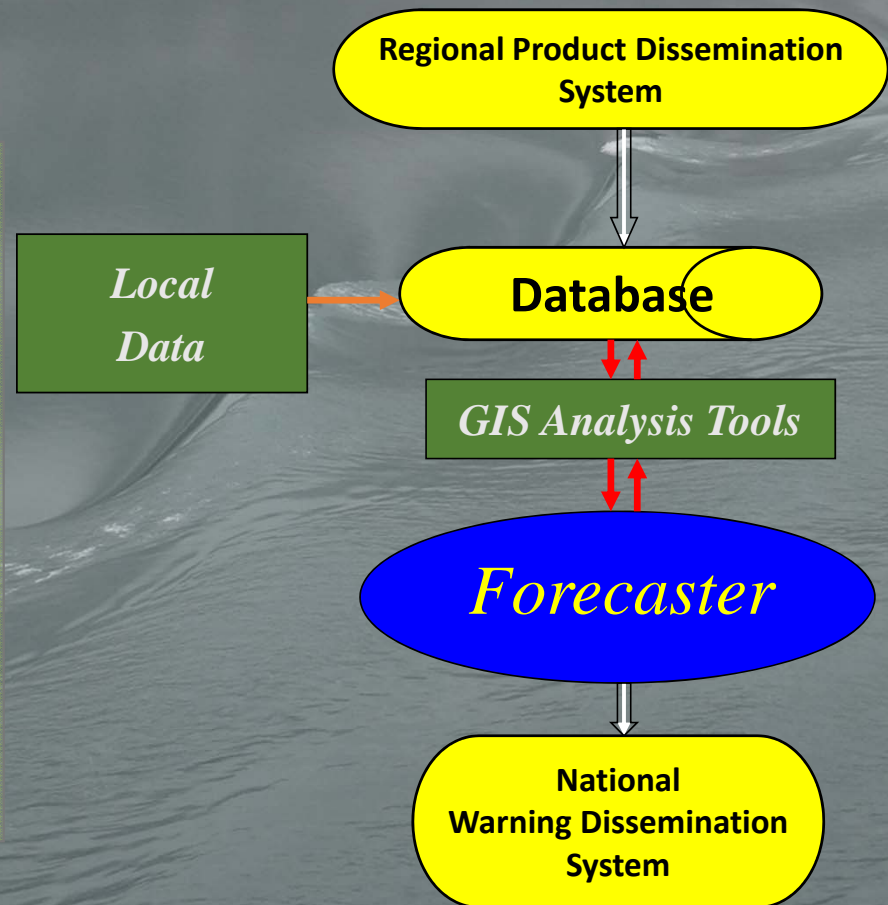
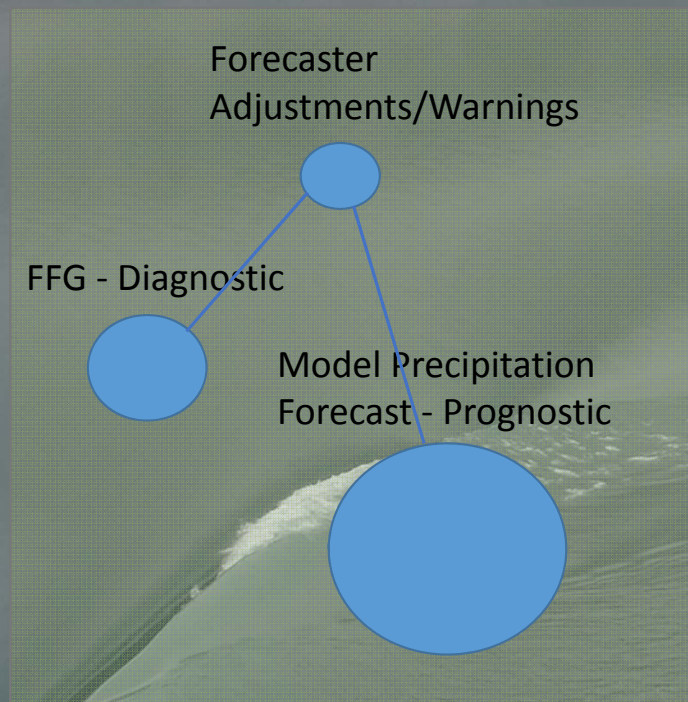
Central Asia Region Planning Workshop

7 May 2015

QPF-Relevant Forecaster Interface Fields



Operations and Validation



Validation – Mesoscale Model

- Forecast precipitation averaged over basins (MAP) against radar/sat/gauge merged MAP product (Frequency of Occurrence of Prec > Threshold over historical record) for rainfall durations of 1, 3, 6, 24 hours.
- If persistent bias is found for certain regions apply post processing bias adjustment before estimating FFFT.