

26 April 2016

SAsiaFFG Status

*Konstantine P. Georgakakos; email: Kgeorgakakos@hrcwater.org
Hydrologic Research Center, San Diego, CA 92130, USA; <http://www.hrcwater.org>*

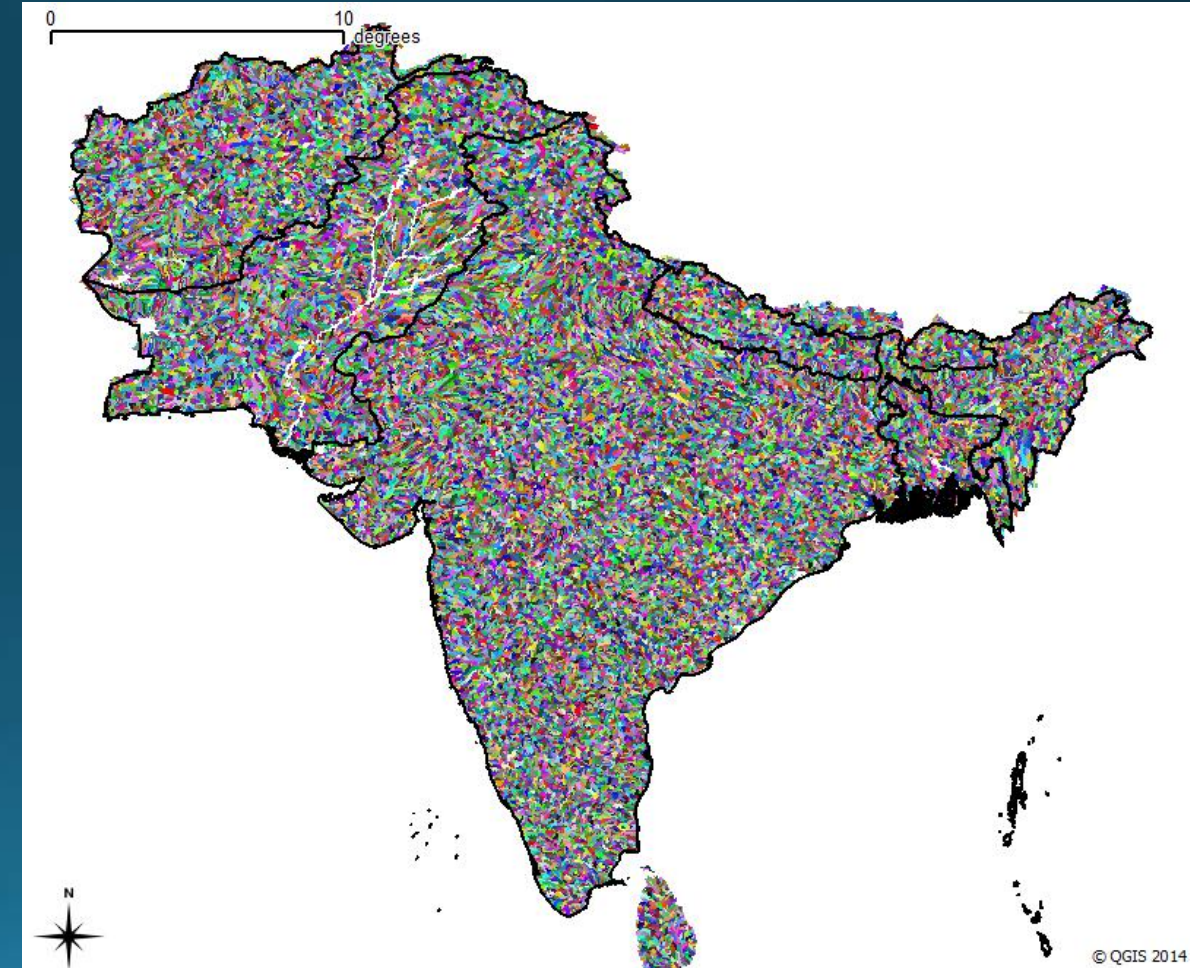
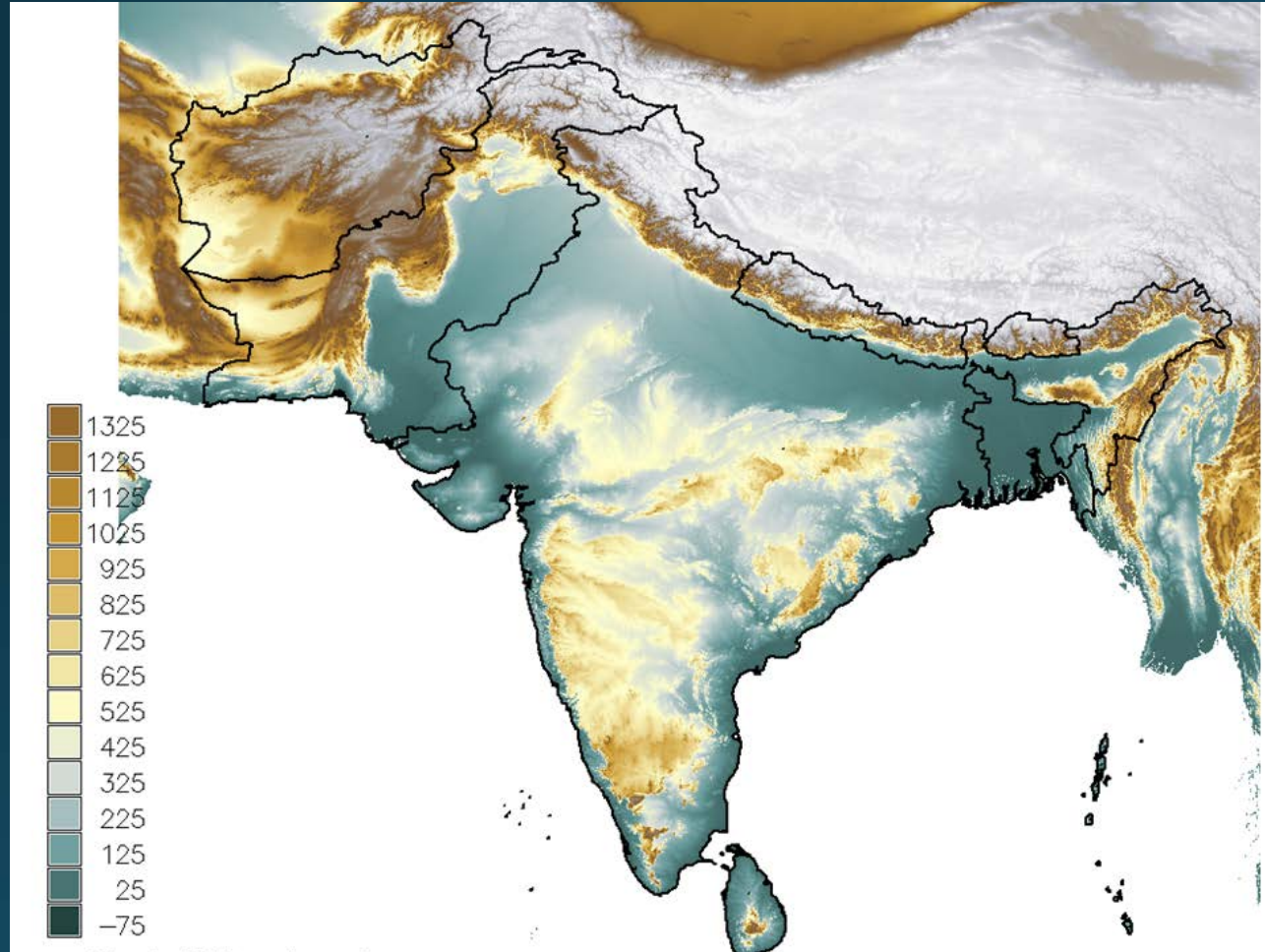
Development Items Completed

All development on the basis of global databases - No Regional Data has been included (apart of Pakistan)

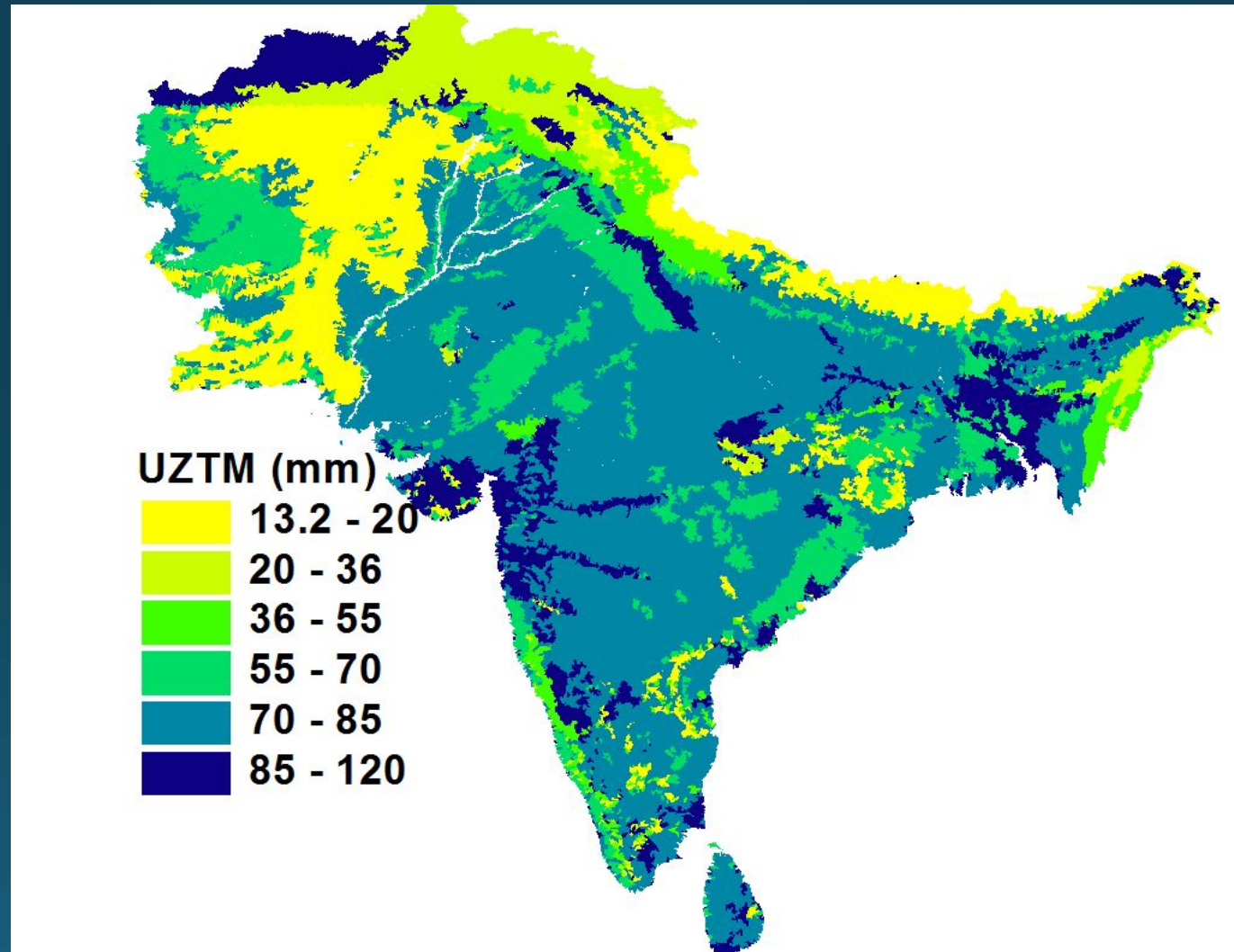
1. Completed (a) the delineation of ~42,000 basins with average area 100-150 km² using SRTM 90-m quality-controlled digital terrain elevation data and (b) the initial adjustments on the basis of global data of river topology and google earth scenes
2. On the basis of FAO soil-texture maps and land-use and land-cover maps, initial parameters for the hydrologic model components have been estimated and implemented in the parametric databases
3. Completed the incorporation the real-time IR-based and MW-based satellite precipitation products for the estimation of the Mean Areal Precipitation (MAP) over each basin.
4. Developed the forecaster panel for snow products and information including the satellite-based IMS product
5. Developed the tailored forecaster interface of the FFG system for South Asia region and for each country in the region
6. Developed the tailored system dashboard of the FFG system for South Asia region and for each country in the region
7. Provided Introduction to the system and first product training at the Project Kick-off meeting in Nepal in 2012.

Development Status - Basin Delineation

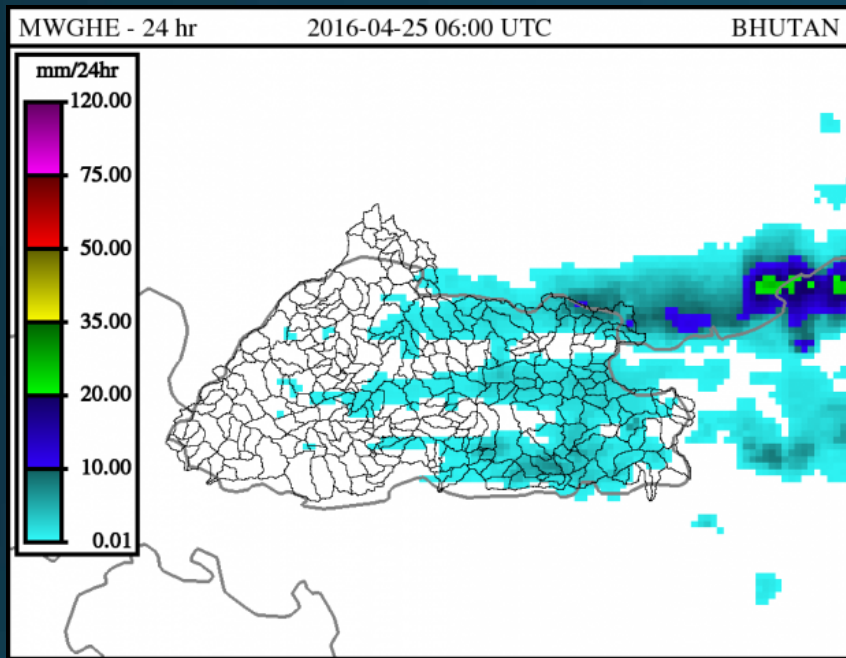
Afghanistan, Bangladesh, Bhutan, India, Nepal, Pakistan, and Sri Lanka



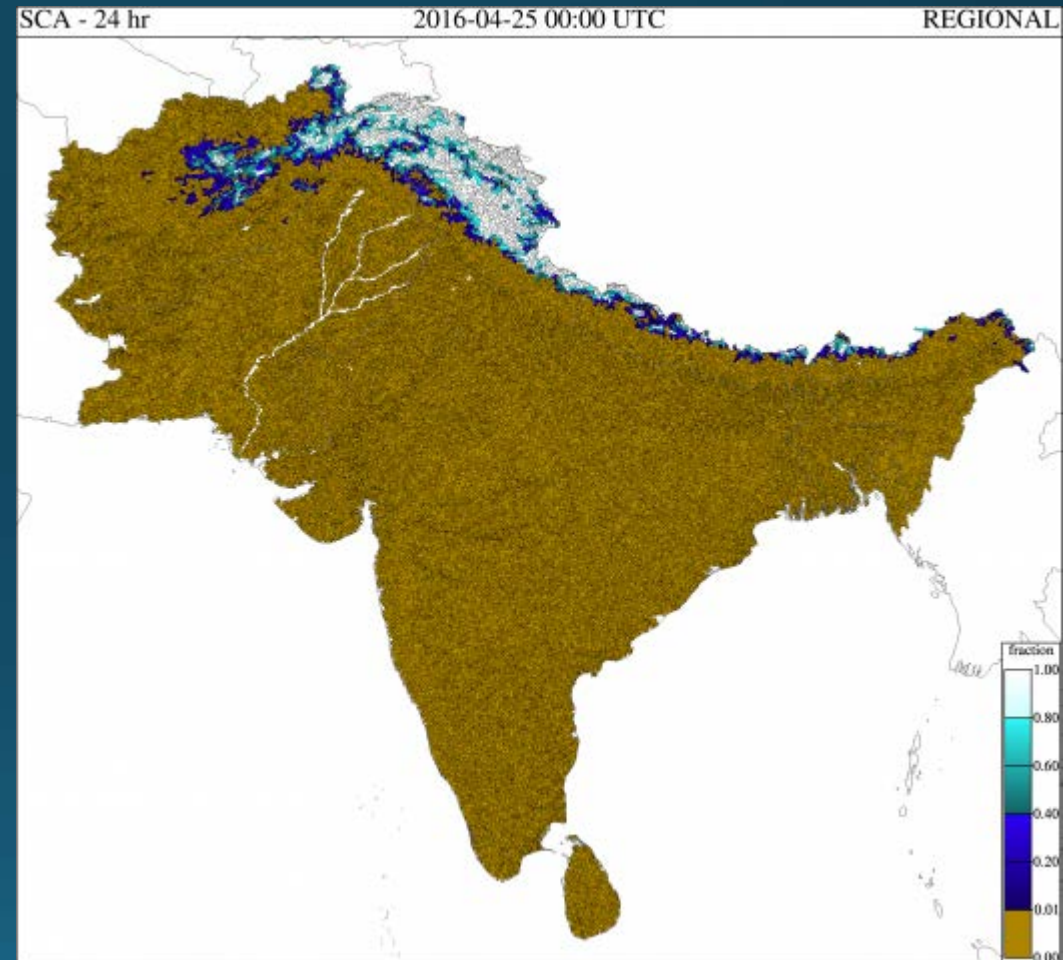
Development Status – Initial Model Parameter Estimation



Development Status – Satellite Precipitation and Snow Cover Products



Microwave adjusted Global Hydro-Estimator (CMORPH and GHE)

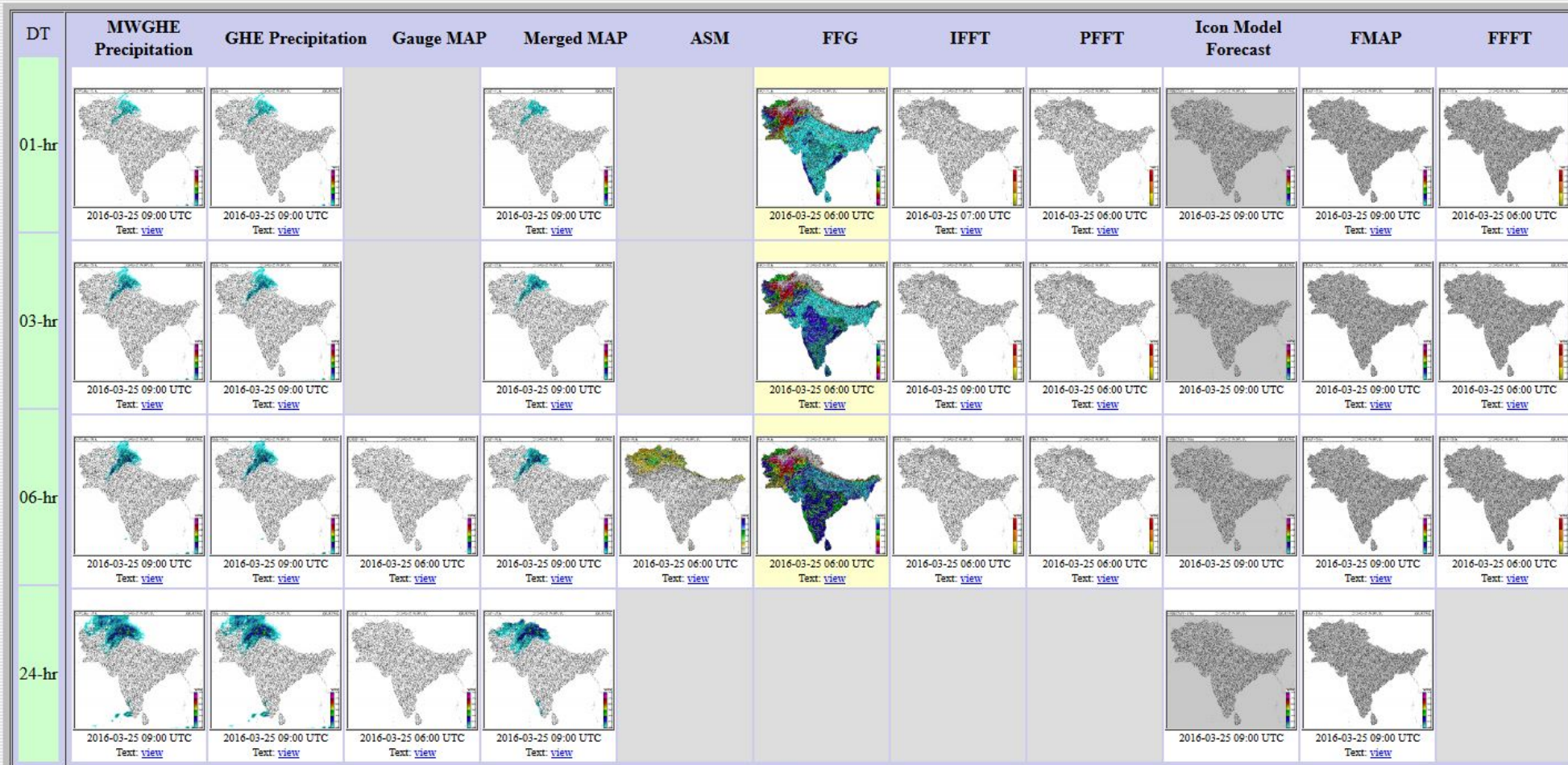


Interactive Multisensor Snow and Ice Mapping System (IMS)

Development Status – Forecaster Interface Main Panel

SAsia-FFG - South Asia Flash Flood Guidance System

Current Date: 2016-04-25 09:48 UTC Nav Date: 2016-03-25 09:00 UTC
 Year: 2016 Month: 03 Day: 25 Hour: 09 REGION: REGIONAL Submit
 -1 Month -1 Day -6 Hours -1 Hour +1 Hour +6 Hours +1 Day +1 Month
 Prev 6-hr Interval (06 UTC) Reset to Current Next 6-hr Interval (12 UTC)



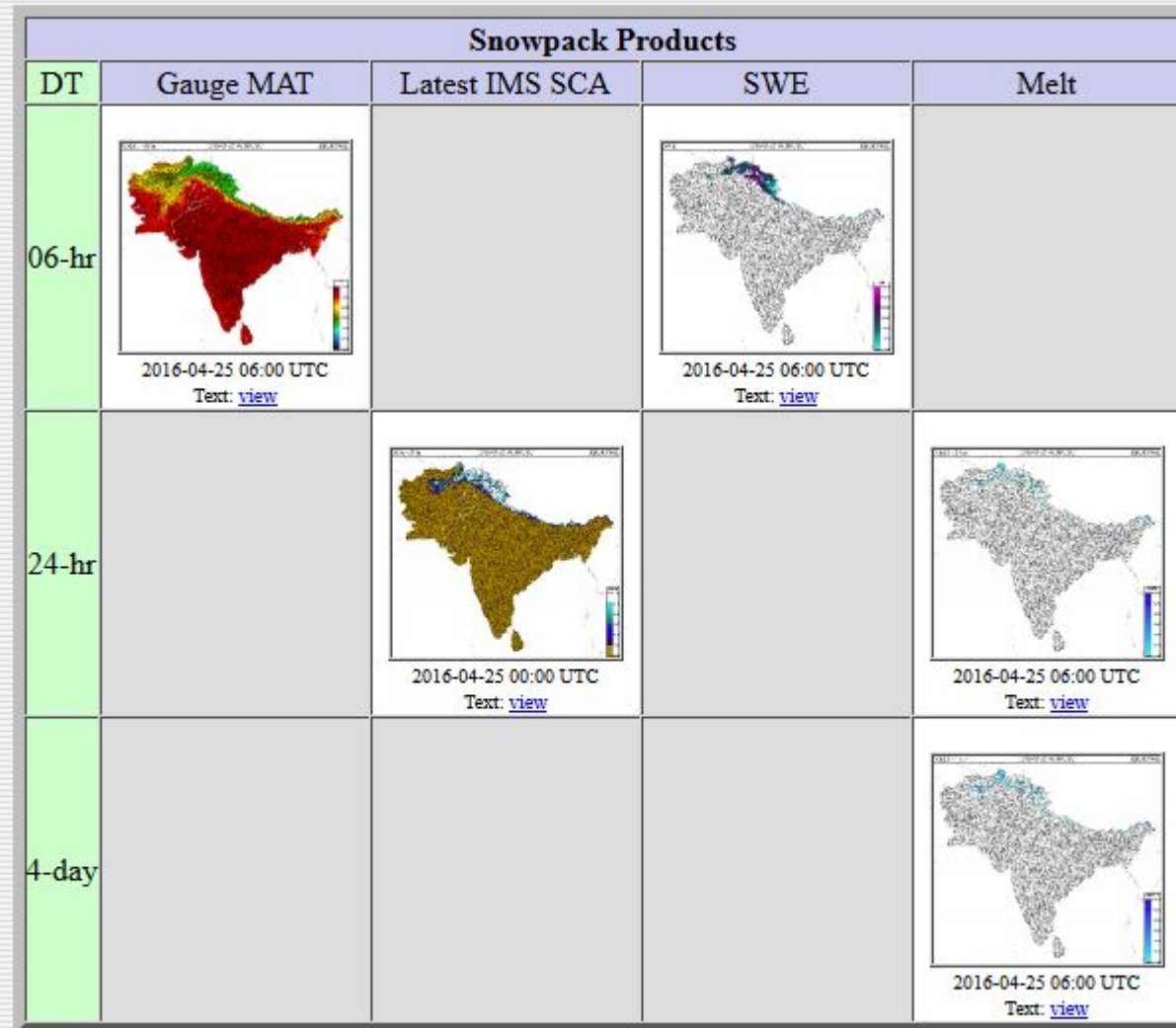
Composite Product: [text](#), [CSV](#), [CSV1](#)

SFTP data transfer (requires SFTP Client): [EXPORTS/REGIONAL/2016/03/25](#)

Surfmet Gauge Observations at 2016-03-25 06:00 UTC

Station Identifier	Station Name	Accumulated Precipitation (mm/06hr)	Average Temperature (C)	Region	Latitude	Longitude	Elevation	Enable Precipitation Flag	Enable Temperature Flag
No reports for region	No reports for region	No reports for region	No reports for region	No reports for region	No reports for region	No reports for region	No reports for region	No reports for region	No reports for region

Development Status – Forecaster Interface Snow Panel



[HOME](#) | [About SASIAFFG Real-Time Product Console](#) | [Product Descriptions](#) | [Processing Logs](#) | [Server Monitor](#) | [Static Resources](#) | [Dashboard](#)

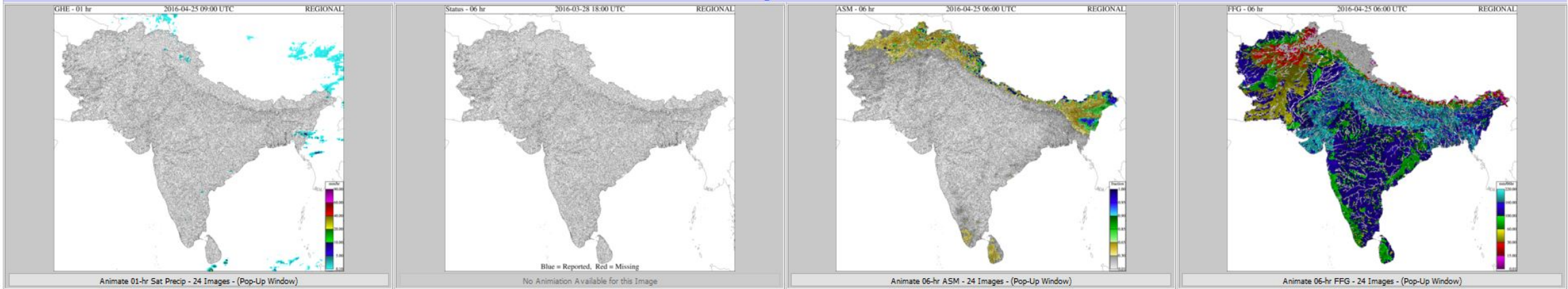
SASIAFFG Real-Time Product Console v.1.0, Release Date: March 2014
Copyright © 2014 [Hydrologic Research Center \(HRC\)](#)

Development Status - Dashboard

SAsia-FFG - South Asia Flash Flood Guidance System

2016-04-25 10:01:26 UTC

Image Products



Real-Time Data Download and Inventory Status

HRC MWGHE Download					NESDIS GHE Download					GAUGE Download					IMS Download					Forecast Download				
ENABLED					ENABLED					ENABLED					ENABLED					DISABLED				
SUCCESS					SUCCESS					SUCCESS					SUCCESS					SUCCESS				
Apr-21	Apr-22	Apr-23	Apr-24	Apr-25	Apr-21	Apr-22	Apr-23	Apr-24	Apr-25	Apr-21	Apr-22	Apr-23	Apr-24	Apr-25	Apr-21	Apr-22	Apr-23	Apr-24	Apr-25	Apr-21	Apr-22	Apr-23	Apr-24	Apr-25
24	24	24	24	10	24	24	24	24	10	0%	0%	0%	0%	0%	0	0	0	0	0	0	0	0	0	0

Real-Time Data Processing Status

HRC MWGHE Data Processing		NESDIS GHE Data Processing		GAUGE Data Processing		IMS Data Processing	
ENABLED		ENABLED		ENABLED		ENABLED	
PENDING		SUCCESS		SUCCESS		SUCCESS	

Model Processing Status

SNOW Model Processing		SACSMA & FFG Model Processing	
ENABLED		ENABLED	
SUCCESS		SUCCESS	

Export Processing Status

Text/CSV Exports		Image Exports	
ENABLED		ENABLED	
SUCCESS		PENDING	

Computational Server Status

General Info				Processing Load				CPU Activity				Disk Activity			Storage			
IP Address	Hostname	Uptime	Active Logins	1-Min	5-Min	15-Min	Swap Used	User	System	IOwait	Idle	Transfers	Read	Write	Free	Used	% Used	Days to Filled
184.185.140.74	SAsia-FFG-CS	292.89 days	0	56.87%	40.50%	40.12%	261348 KB	32.71%	9.61%	0.00%	57.68%	121.20 t/s	1.60 KB/s	5,408.80 KB/s	1,559,280 MB	1,876,767 MB	22215 %	303 days

Dissemination Server Status

General Info				Processing Load				CPU Activity				Disk Activity			Storage			
IP Address	Hostname	Uptime	Active Logins	1-Min	5-Min	15-Min	Swap Used	System	User	IOwait	Idle	Transfers	Read	Write	Free	Used	% Used	Days to Filled
-	-	-	-	-	-	-	-	-	-	-	-	-	-	-	-	-	-	-

REGIONAL [AFGHANISTAN](#) [BANGLADESH](#) [BHUTAN](#) [INDIA](#) [NEPAL](#) [PAKISTAN](#) [SRILANKA](#)

[Go to REGIONAL Product Console](#)

Thank you

