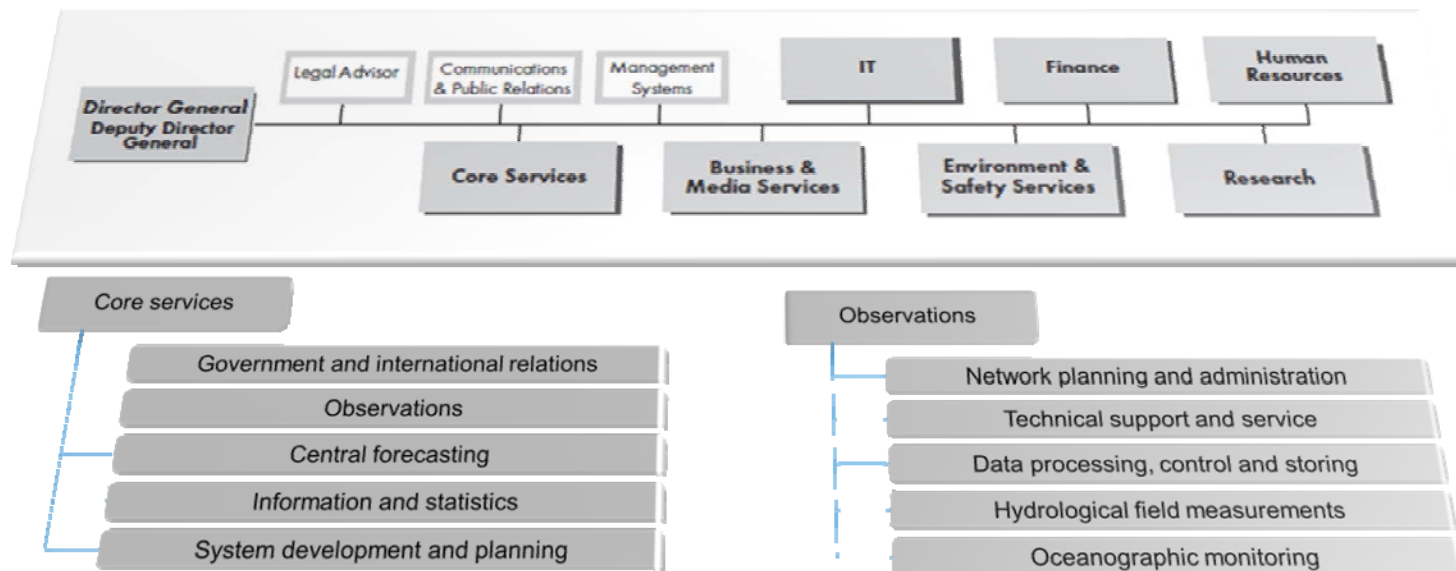


Swedish Meteorological and Hydrological Institute

Caroline Eklund
2012-05-08



SMHI – Organization

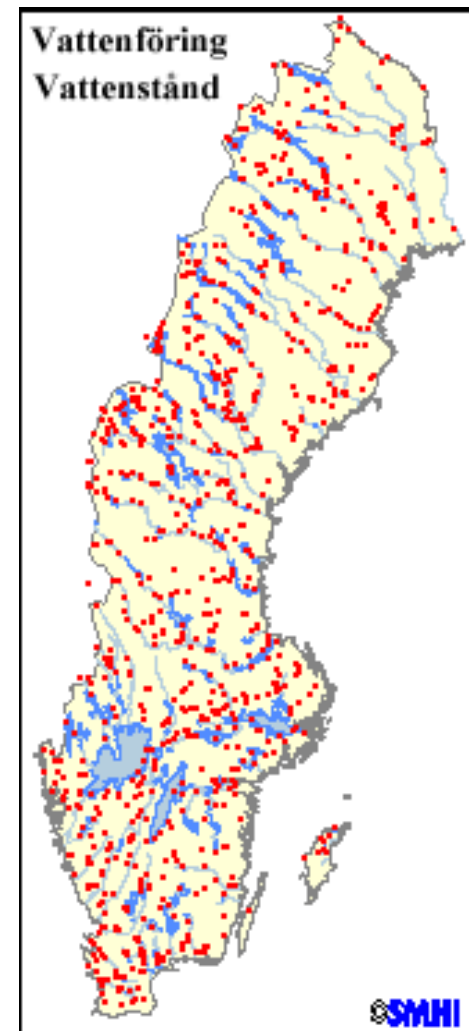


National hydrological network

330 stations

- 220 stations are owned and operated by SMHI
- 110 stations are owned and operated by water power companies

- 70 of SMHIs stations are real time reporting
- 150 of SMHIs stations are not real time reporting. Data are received monthly.



Success - 50 mobile hydrological stations

- Pressure Transducer Technology
- Local power supply
- Mobile communications
- Will be moved after 2-3 years and 3-5 flow measurements

SMHI:s commitment:

- Campaign Observations
- Ownership and installation
- Operation, maintenance and removal
- The collection, examination and processing of results
- Archiving of data



Challenges

- New generation
- Long learning time for new employees



The future

- More real time observations
- Small and less complex stations
- Moveable stations
- New means of communication
- New means of power supply
- Conflicts with nature aspects
- Flexible field measurements
- Training