



World Meteorological Organization  
Working together in weather, climate and water



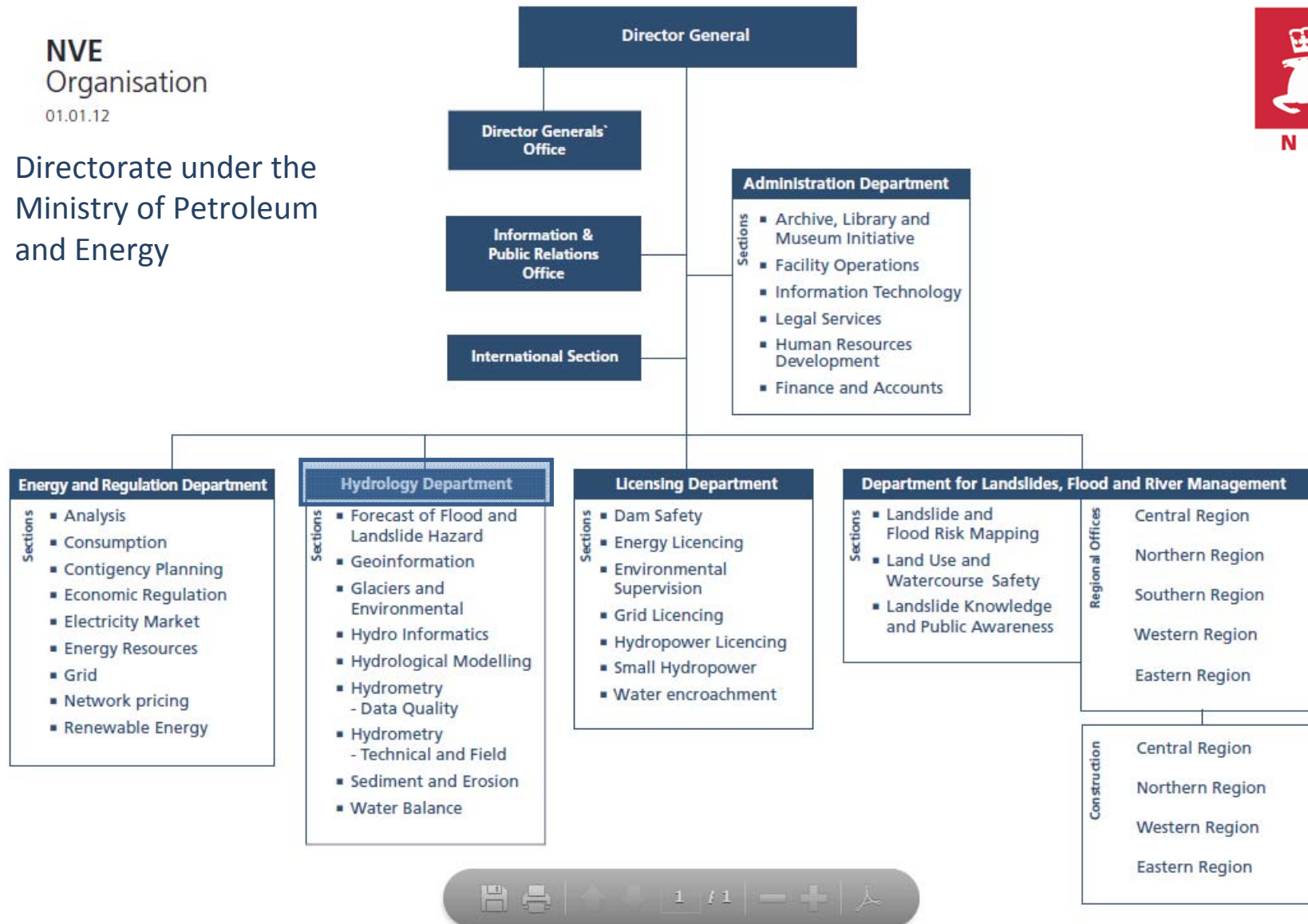
# Regional Association VI, Forum Hydrology, Koblenz May 8 – 10, 2012

Statements of the national  
hydrological service of Norway,  
The Norwegian Water Resources  
and Energy Directorate (NVE)





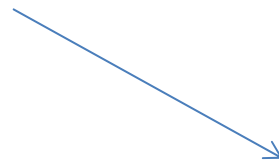
Directorate under the  
 Ministry of Petroleum  
 and Energy



# Station network



- Water level/Discharge 700
- Water level 800  
(500 weekly)
- Snow stations (SWE) 30
- Mass balance glacier 11
- Soil and ground water 70
- Ice and water temp 430
- Sediment 25
- Urban 9
- + some meteorology





# Organization, role and main tasks



- Flood forecasting and inundation maps (NVE)
- Maintaining national power supplies – calculations weekly on hydropower potential
- Climate studies

# Biggest success



- More than 70 flood forecasts 2011 – handling of the total and of the biggest ones
- Designing clever ways of doing things! – save people's time



# Biggest failure



- New system for flood forecasting – should have been running since 2009
- Lack of communication – double up



# Expectations



- Forecasting danger of land slides – put into service 2013
- Better data exchange, database open to public