

A satellite image showing a tropical storm or hurricane over the Caribbean region. The storm is characterized by a dense, swirling cloud structure with a visible eye. The image is overlaid with a grid of latitude and longitude lines. A red rectangular box is centered over the storm, containing the title text.

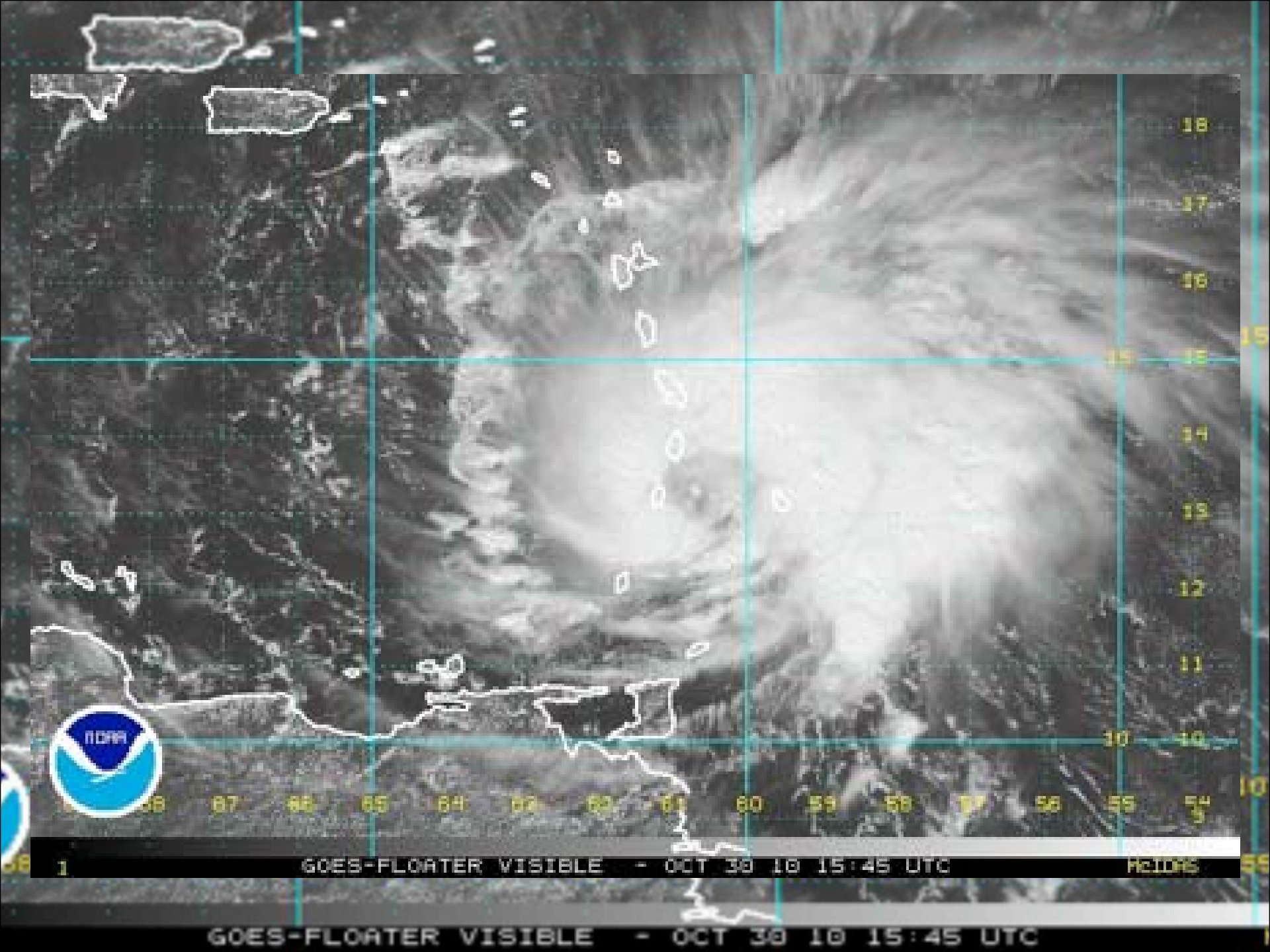
**A BRIEF REPORT ON  
TROPICAL  
STORM/HURRICANE  
"TOMÁS"**

GOES-FLOATER VISIBLE - OCT 30 10 15:45 UTC

# “TOMÁS”

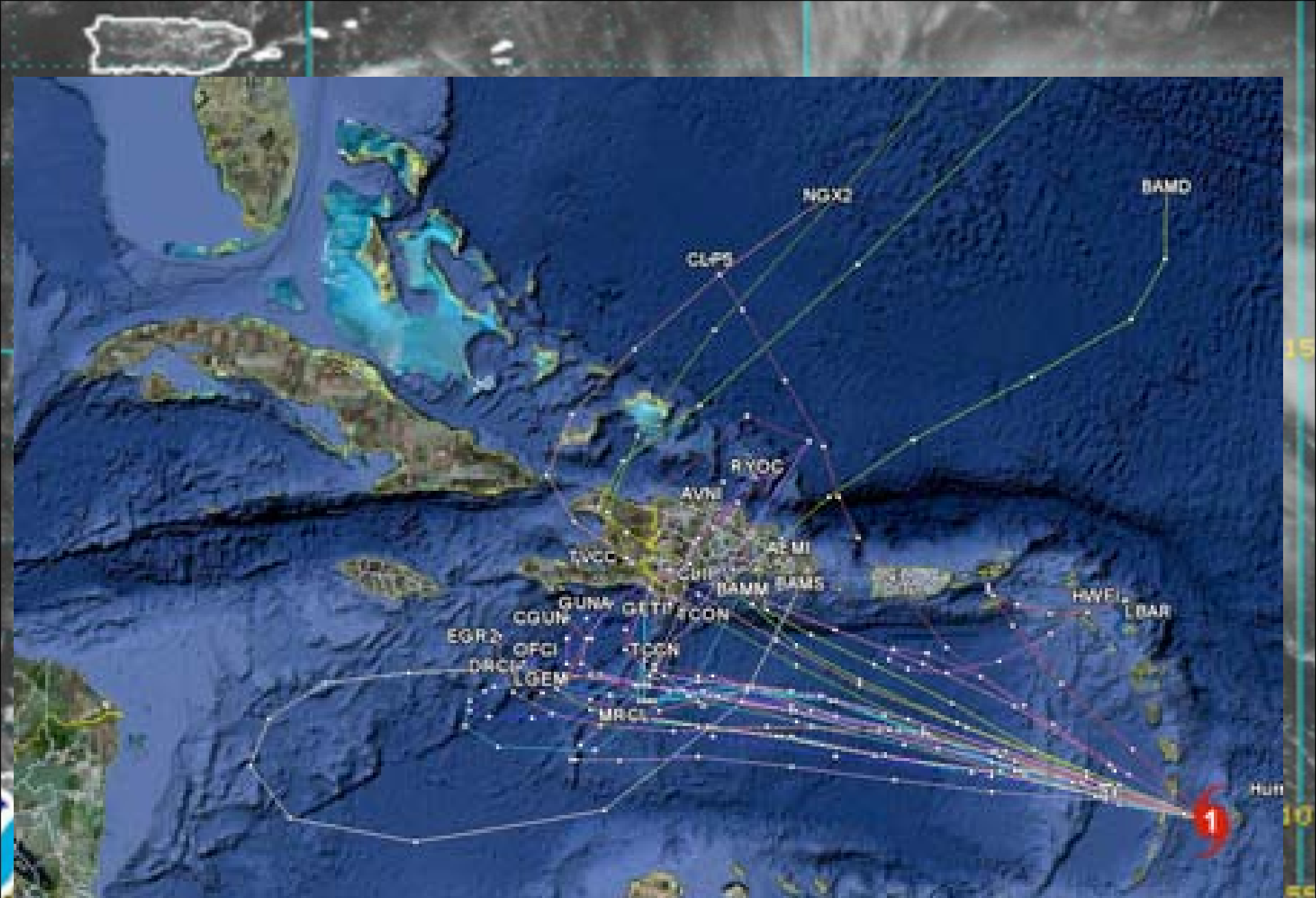
## SOME HIGHLIGHTS

- Formed very fast, in a vigorous Atlantic tropical wave, unusual for the time of the year.
- First Tropical Storm ever formed in the Atlantic, at such a low latitude and to the East of the Windward Islands, so late in the Season (29 October).
- 19<sup>th</sup> Tropical Storm and 12<sup>th</sup> Hurricane of the 2010 Season.
- “Tomás” takes the 2010 Season in the 3<sup>rd</sup> place in history, along with 1995 and 1887 seasons. The 1933 Season remains in 2<sup>nd</sup> place (21 storms) and 2005 in the first place (28 storms)

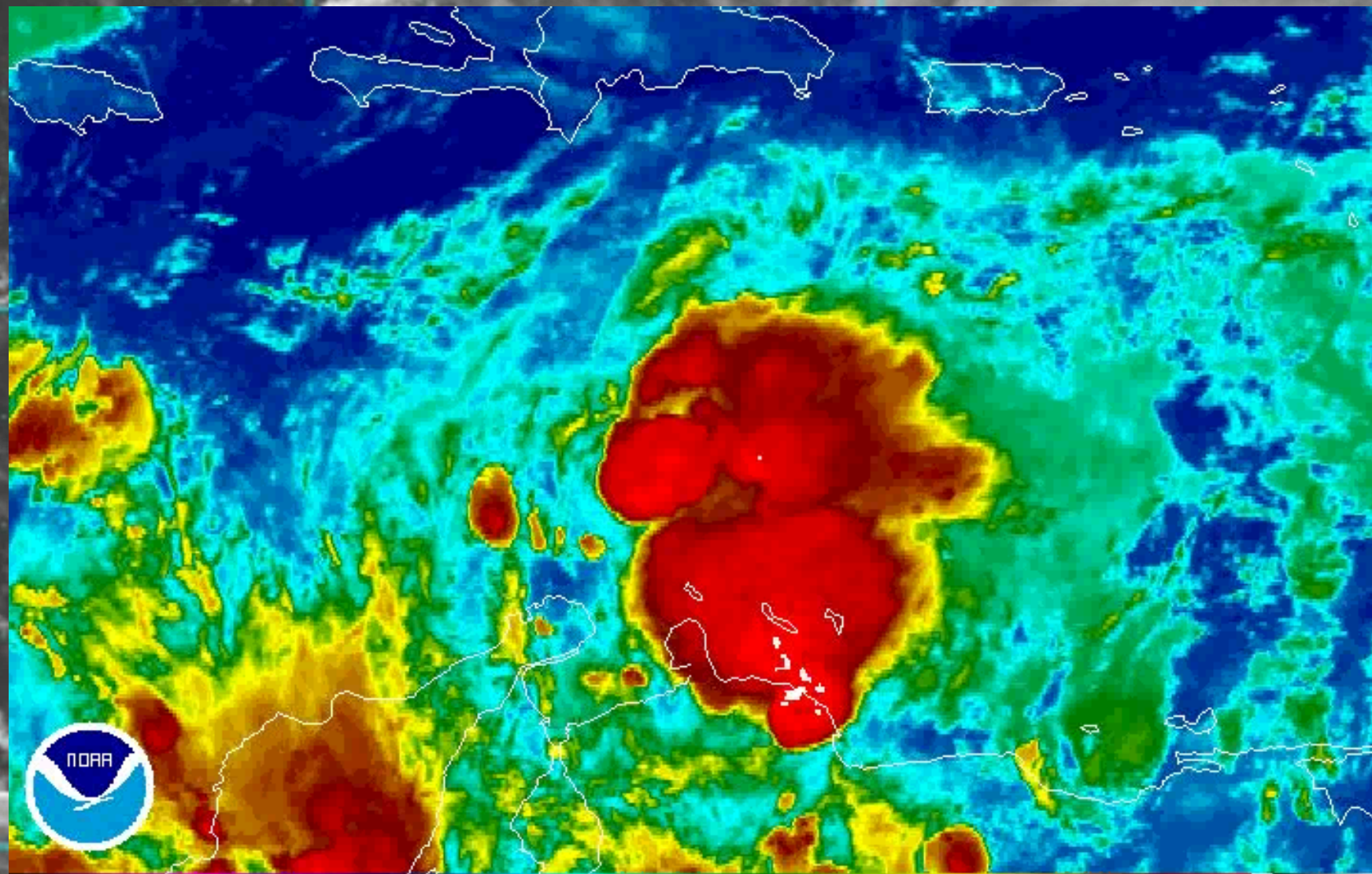


GOES-FLOATER VISIBLE - OCT 30 10 15:45 UTC

GOES-FLOATER VISIBLE - OCT 30 10 15:45 UTC



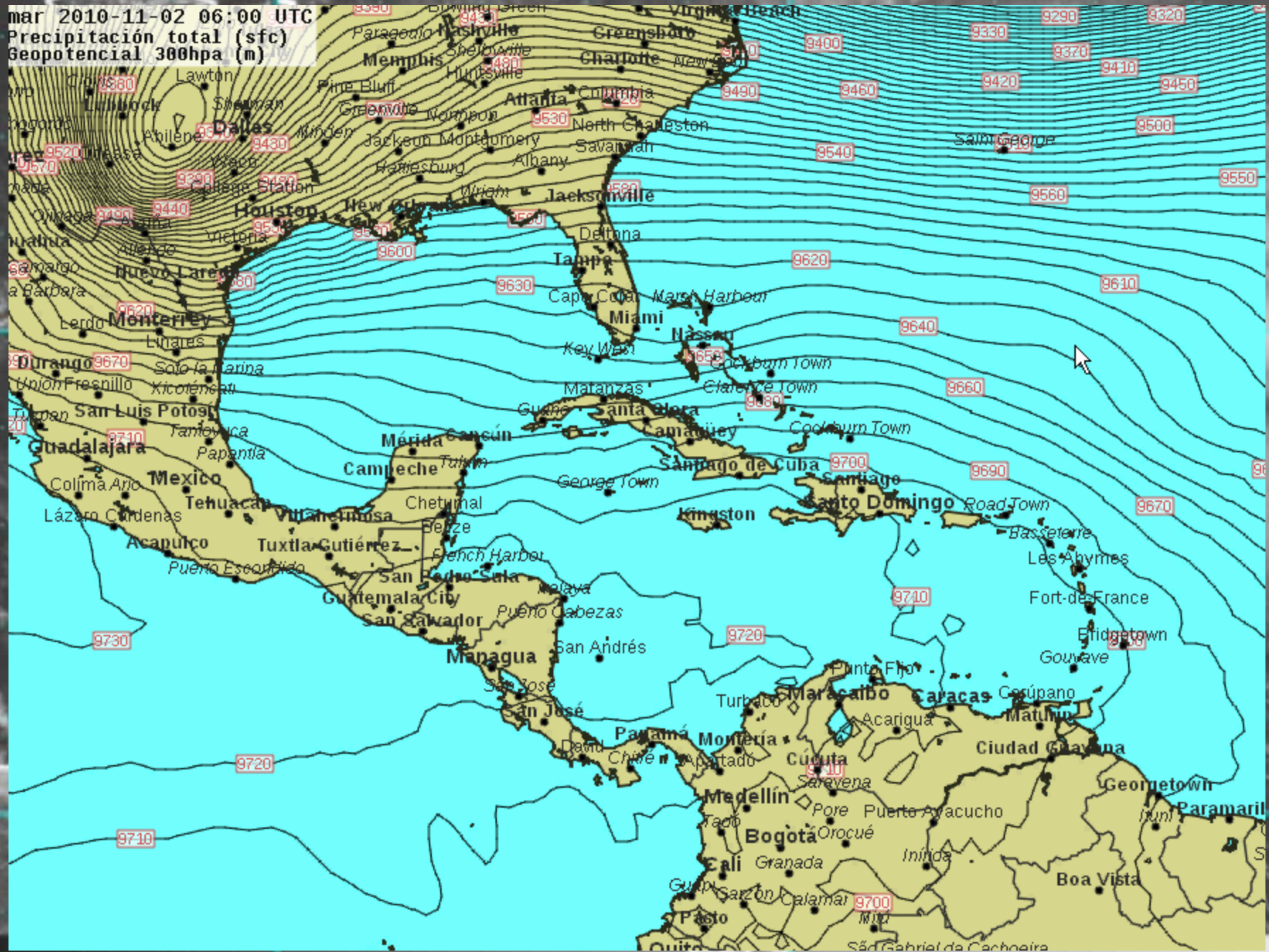
GOES-FLOATER VISIBLE - OCT 30 10 15:45 UTC



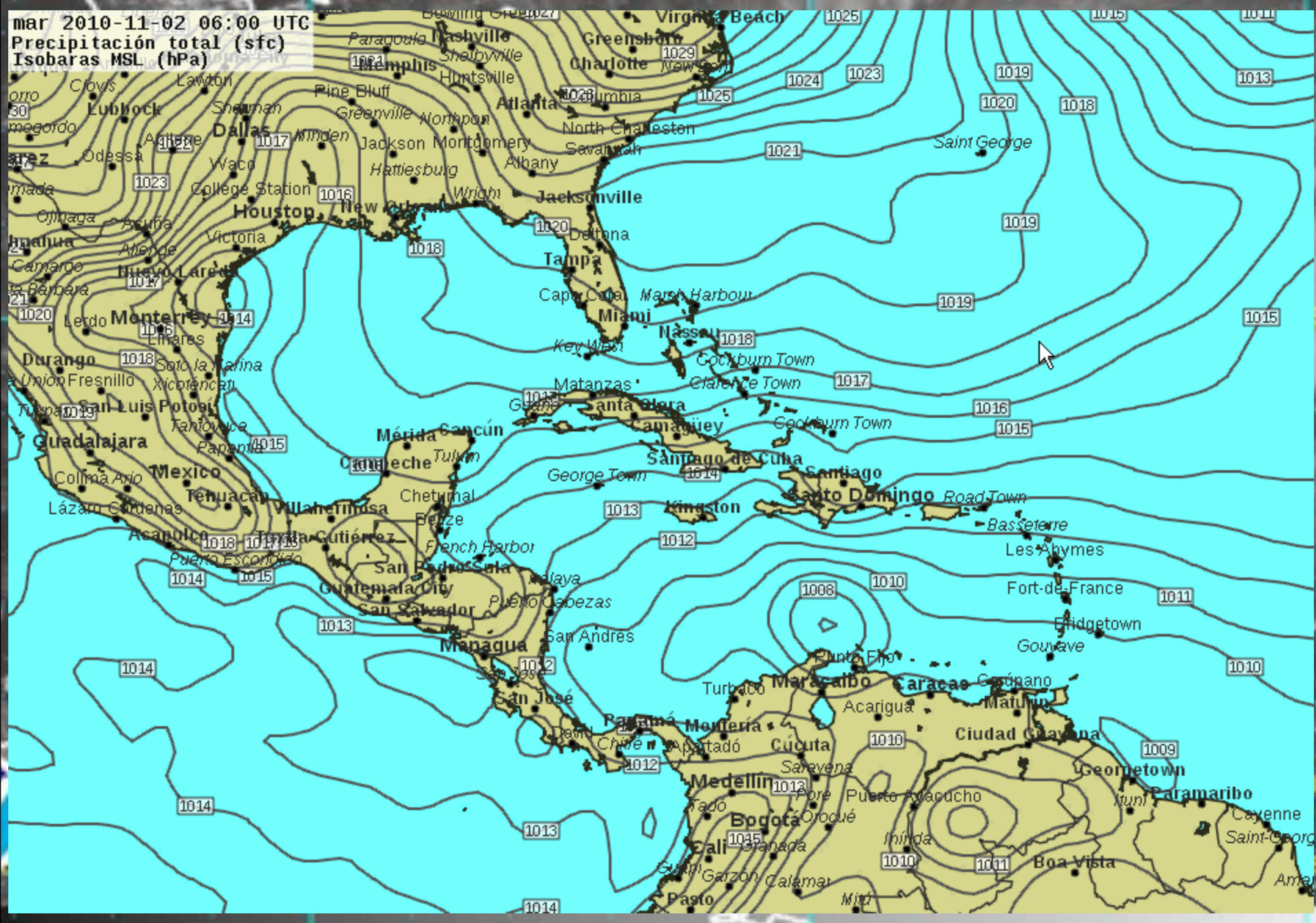
GOES-FLOATER RAINBOW IR CH. 4 - NOV 2 10 03:45 UTC

GOES-FLOATER VISIBLE - OCT 30 10 15:45 UTC

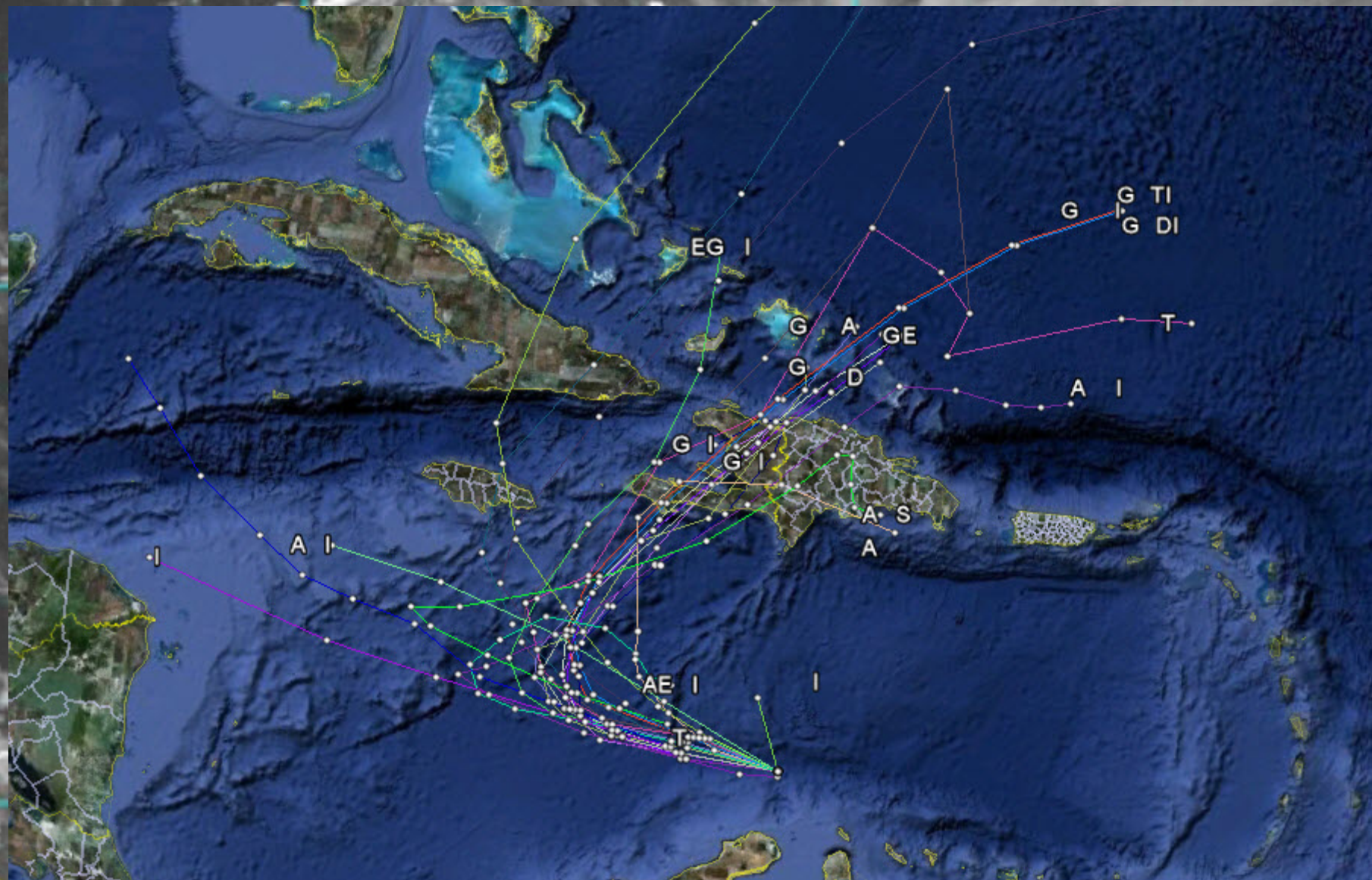
mar 2010-11-02 06:00 UTC  
Precipitación total (sfc)  
Geopotencial 300hpa (m)



mar 2010-11-02 06:00 UTC  
Precipitación total (sfc)  
Isobaras MSL (hPa)



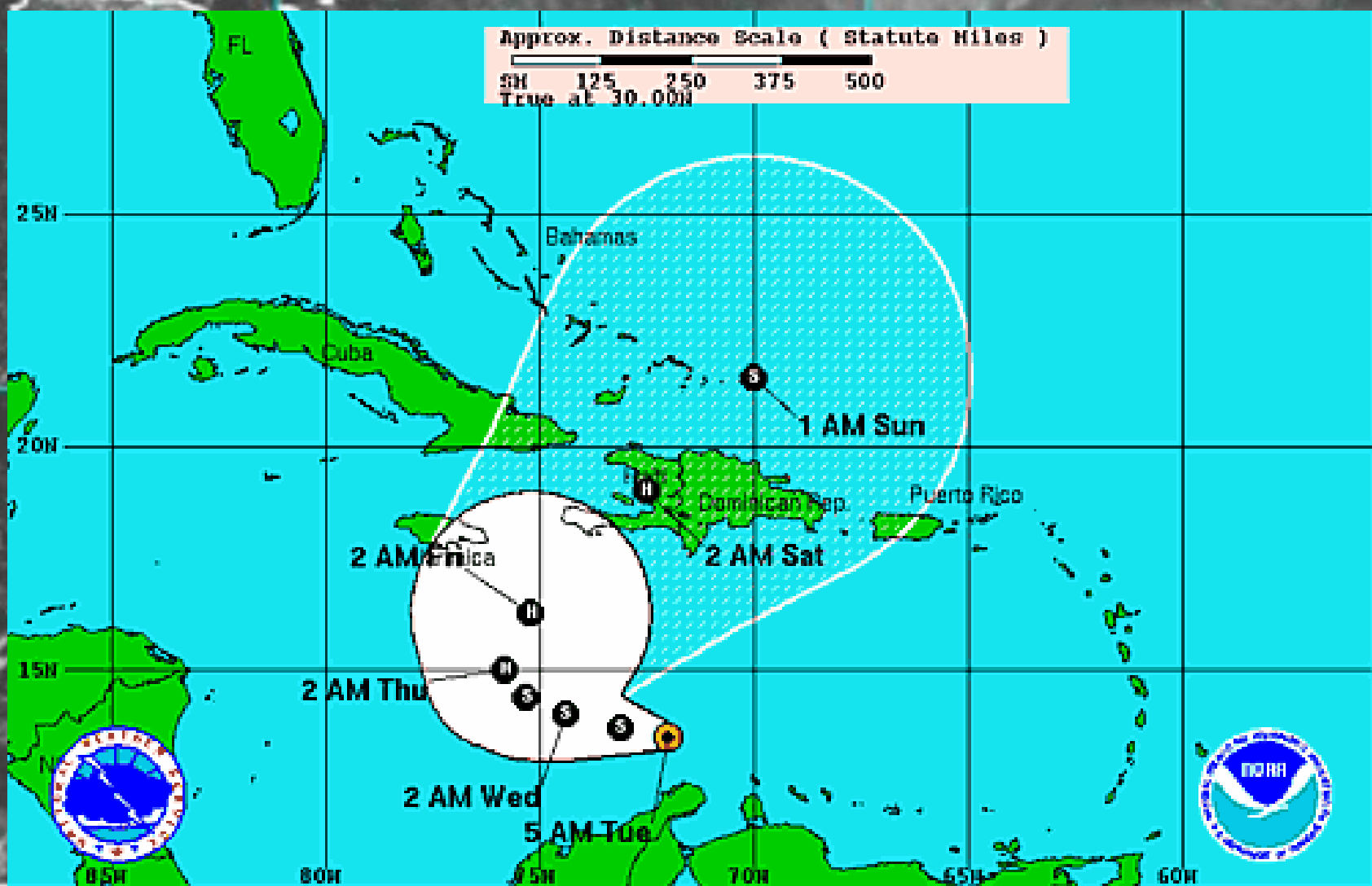
GOES-FLOATER VISIBLE - OCT 30 10 15:45 UTC



GOES-FLOATER VISIBLE - OCT 30 10 15:45 UTC



Approx. Distance Scale ( Statute Miles )



**Tropical Storm Tomas**

Thursday November 2, 2010

5 AM EDT Advisory 17

NWS TPC/National Hurricane Center

**Current Information:**

Center Location 13.5 N 72.0 W

Max Sustained Wind 50 mph

Movement W at 12 mph

**Forecast Positions:**

Tropical Cyclone Post-Tropical

Sustained Winds: D < 30 mph

S 30-73 mph H 74-110 mph M > 110mph

**Potential Track Area:**

Day 1-3 Day 4-5

**Watches:**

Hurricane Trop. Storm

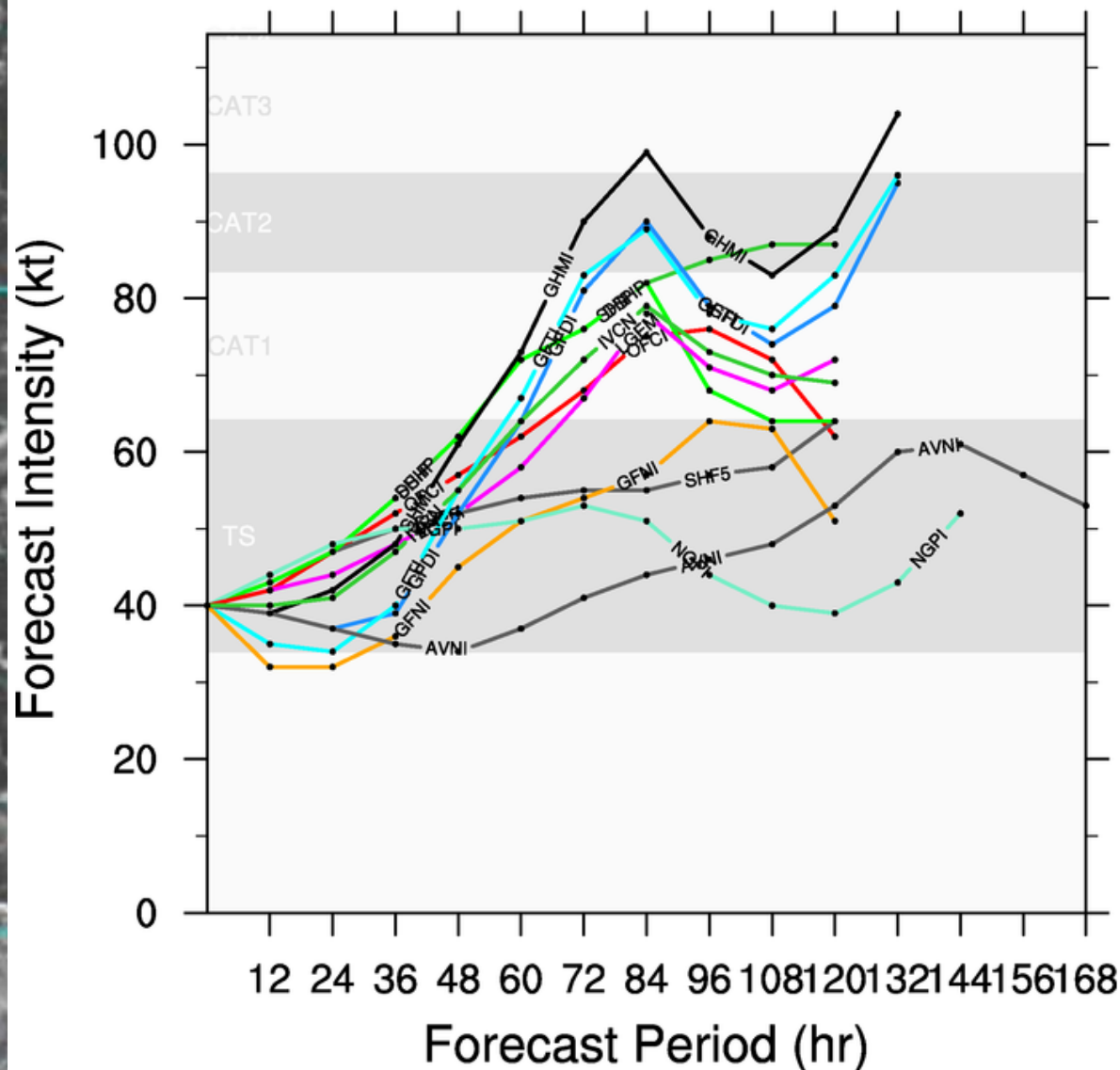
**Warnings:**

Hurricane Trop. Storm

# TROPICAL STORM TOMAS (AL21)

## Early-cycle intensity guidance

valid 0600 UTC, 02 November 2010



This plot does not display official storm information. Use for information purposes only.  
DO NOT USE FOR LIFE AND DEATH DECISIONS!

A satellite image of a tropical storm system, likely a typhoon, over the Pacific Ocean. The storm is characterized by a dense, swirling cloud structure with a visible eye. The image is overlaid with a cyan grid. A red rectangular box with a white border is centered in the lower half of the image, containing the text "THANK YOU!". At the bottom of the image, there is a black bar with white text. The text at the bottom reads "GOES-FLOATER VISIBLE - OCT 30 10 15:45 UTC".

**THANK YOU !**

GOES-FLOATER VISIBLE - OCT 30 10 15:45 UTC