

Partnerships for the GFCS

WMO Regional V Seminar on Climate Services
Honiara, Solomon Islands
1-4 November 2011

Penehuro (Pene) Lefale
Manager, International Affairs Office

This presentation covers ...

- Overview of MetService's functions
- Partnerships; MetService experience
- Partnership Models for the GFCs?
- Summary



1. OVERVIEW OF METSERVICE'S FUNCTIONS



MetService's functions

National Meteorological Service

- MetService operates **many of the weather-related NMS functions** as a result of its commercial contract with the Minister of Transport, which makes up about half of MetService revenue
- **Climate- and water-related functions** for New Zealand are provided by other agencies (NIWA)



MetService's functions

New Zealand's Authorised Meteorological Warning Service

- Under the *Meteorological Services Act 1990*, the Minister of Transport has designated MetService as the party responsible for providing the authorised meteorological warning service in New Zealand, as follows:
 - *the making and issuing of forecasts of the weather; and*
 - *the collection and recording of such meteorological information as is necessary for the purposes of the making and issuing of forecasts of the weather.*
- Under the *National Civil Defence Emergency Management Plan Order 2005*, *MetService is the responsible agency for issuing national warnings for severe weather* (a civil defence emergency management hazard).



MetService's functions



Permanent Representative of New Zealand with WMO

- The Permanent Representative (PR) is the single point of contact within each country with whom the WMO Secretariat in Geneva stays in touch over any issues, whether they are weather, climate, water and related environmental issues.
- In New Zealand the PR is responsible not just for MetService participation in WMO, but also for coordinating WMO matters with other organisations such as crown research institute NIWA (National Institute of Water and Atmospheric Research).
- Peter Lennox is PR of New Zealand with WMO.
- Pene Lefale is Alternate PR.
- Charles Pearson (NIWA) – Hydrological Adviser to PR



MetService's functions



Commercial weather services

- Parent company MetService (New Zealand) with subsidiaries Metra (Australia, Asia, Europe, Middle East and Africa) and Weather Commerce (United Kingdom)
- **Specialised weather services to the energy sector** – generation, transmission, retail & trading (product brand FAST Trader).
- **Tailored weather graphics and supporting data to broadcast and online media** (product brand Weatherscape).
- **Specialised weather services to recreational and commercial aviation.**
- **Advertising opportunities on metservice.com** – New Zealand's sixth most popular website (as measured by number of unique browsers).
- **Specialised weather services to other industry** - e.g., roading, transport, retail logistics, sports management.



2. STATEMENT OF CORPORATE INTENT, VISION & PURPOSE



Statement of Corporate Intent

- Outlines the direction of the company, its organisational goals, core and related activities, and key performance indicators.



Vision and Purpose

- **Vision:**
to be recognised as a global leader in local weather.
- **Purpose:**
to create wealth for our customers and for New Zealand.

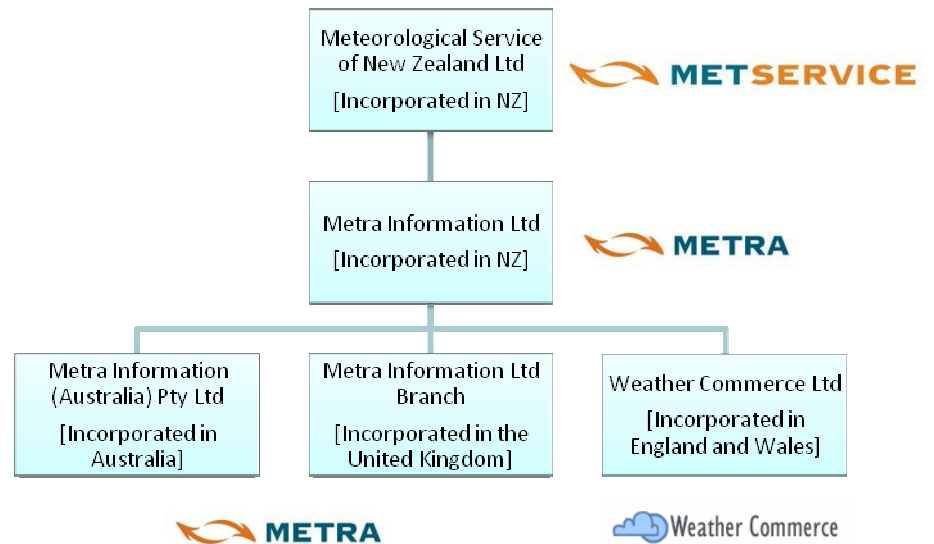


3. STRUCTURE



Entity structure

- State-owned enterprise formed in 1992 and governed by the *State-Owned Enterprises Act 1986*.
- Wholly owned by the Government but required by this legislation to operate in the same manner as private sector companies.



4. KEY UNITS



International Affairs Office

- MetService participation in WMO is looked after by the International Affairs Office managed by Pene Lefale, with James Lunny as Deputy.
- The International Affairs Office also coordinates other international activities, focussing on support in the Pacific Islands.



Pene Lefale



James Lunny



Sales and Marketing

- Sales and marketing of commercial weather services
- Forecasting Research
- Public communication
 - metservice.com and m.metservice.com websites (warnings and weather)
 - Free subscriber services – various weather and seasonal outlook emails, videocasts, blogs, social media (Facebook & Twitter), industry briefings (Federated Farmers), Field days and public events
 - Media interviews and media relationship management (Weather Ambassador, and Media & Communications Meteorologist)
 - Corporate communications and government relations



*Weather Ambassador
Bob McDavitt*



*Media & Communications
Meteorologist
Daniel Corbett*



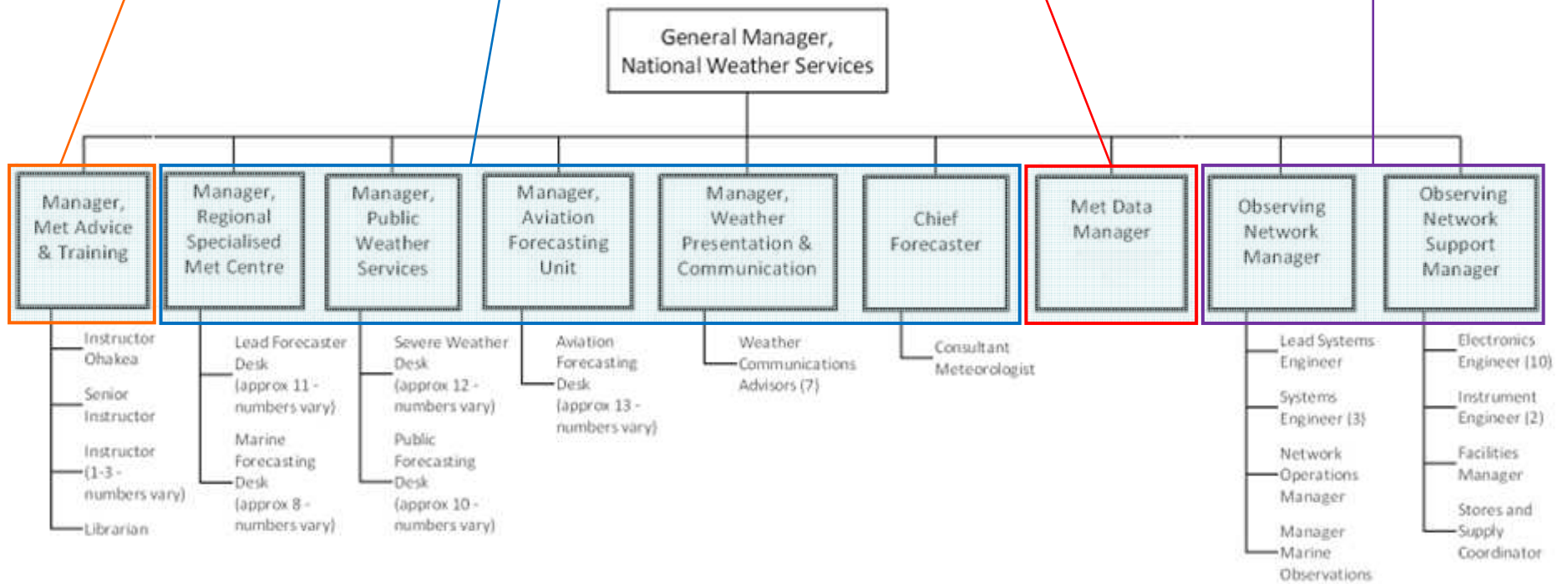
National Weather Services

Technical training

Forecasting

Data arrangements

Observing programme

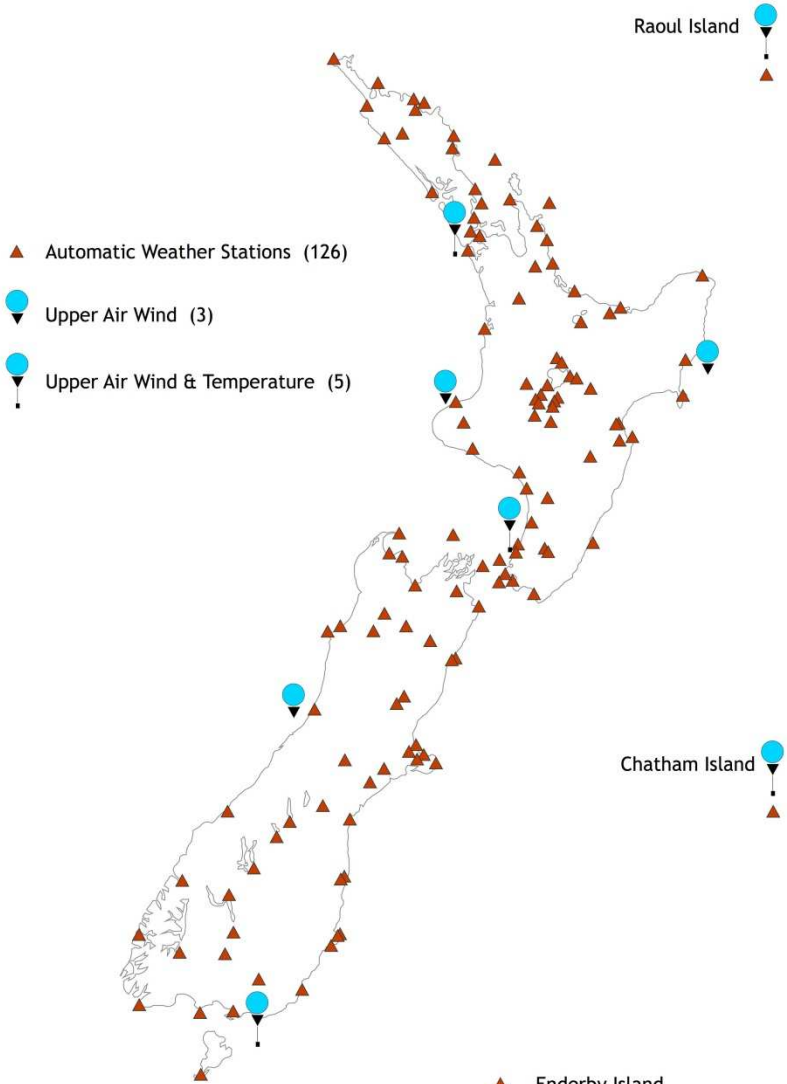


The Observations and Engineering Team

- 23 staff based in Kelburn and Paraparumu
- Observing programme management
- Engineering design & development for AWS
- AWS fabrication, installation and support
- Radar installation and support
- Maintenance of satellite data retrieval systems

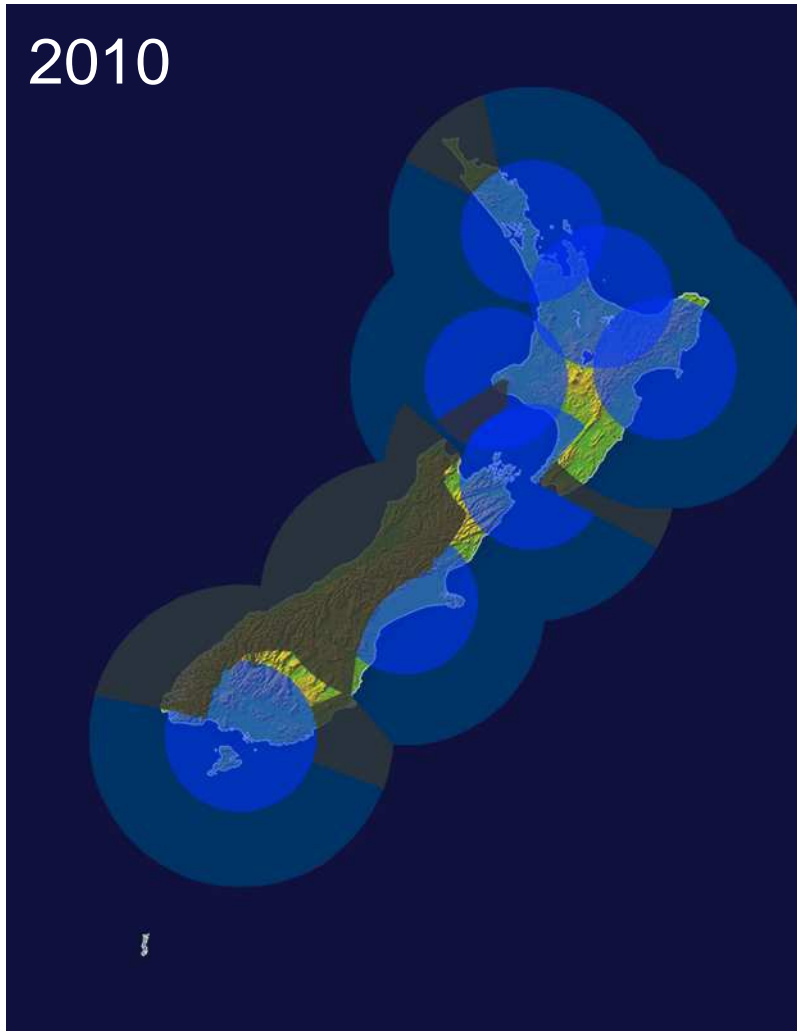


Weather Observing

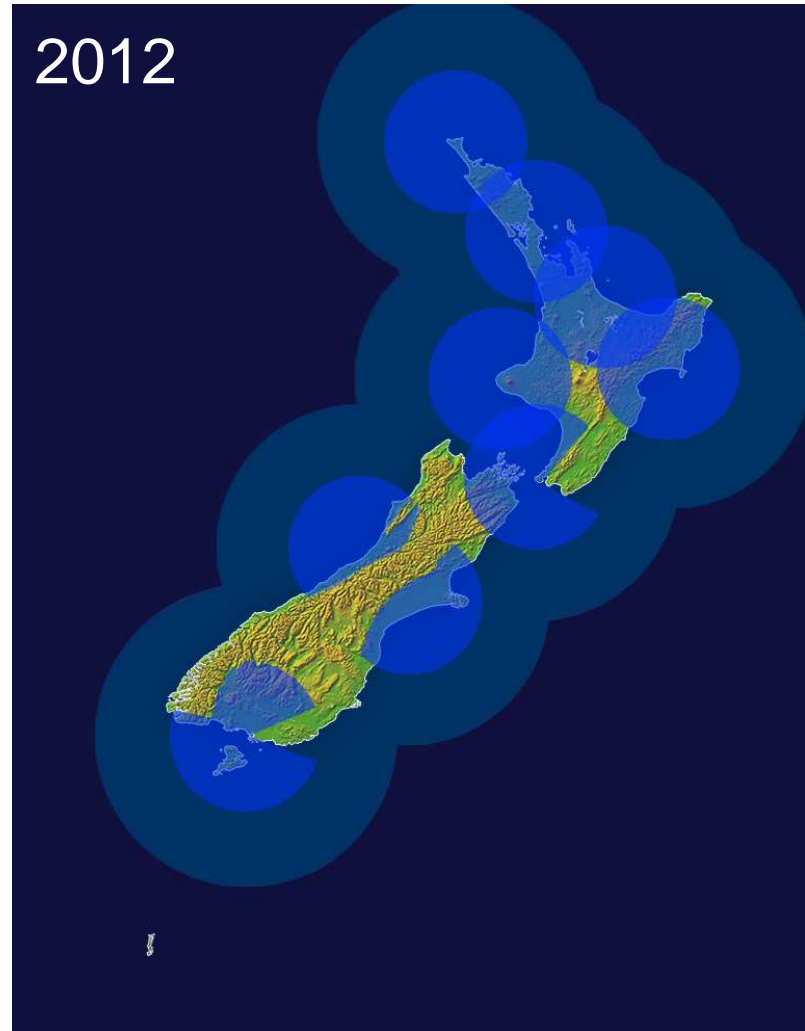


Radar Network Expansion

2010



2012



Public Weather Services

Actual 11°C Feels like 9°C	Wellington 3 clothing layers & 1 windproof layer Data updated 6:44pm 13 July 2011	Wind Fresh NW 31 km/h Gust 48 km/h (in last 10 minutes)	Rainfall 0.0mm Humidity 72% Pressure 996hPa (latest hourly observation)
TEN DAY FORECAST Today MAX 15°C MIN 10°C Showers clearing, then fine. Strong gusty northwest. Issued: 5:05pm 13 Jul	Tomorrow 14 Jul MAX 13°C MIN 4°C Few early showers, then fine. Northwest, dying out. Issued: 5:05pm 13 Jul	Friday 15 Jul MAX 10°C MIN 6°C Showers, easing late. Cold southerlies strengthening. Issued: 1:13pm 13 Jul	

metSERVICE.com About | Careers | Contact

[national](#)
 [towns & cities](#)
 [rural](#)
 [marine](#)
 [mountains & nation](#)

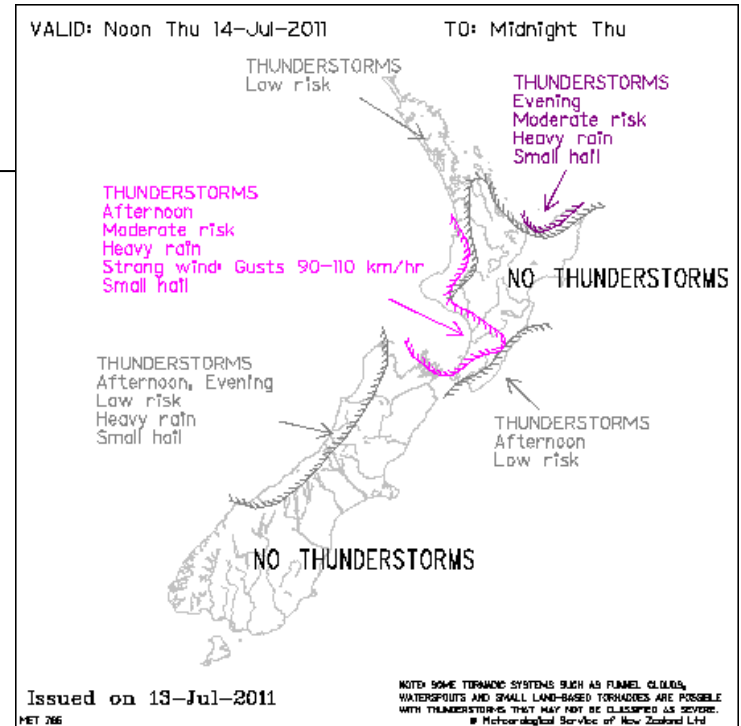
[Maps & Rain Radar](#)
 [Traffic Cameras](#)
 [Weather Warnings](#)

Severe Weather Warnings

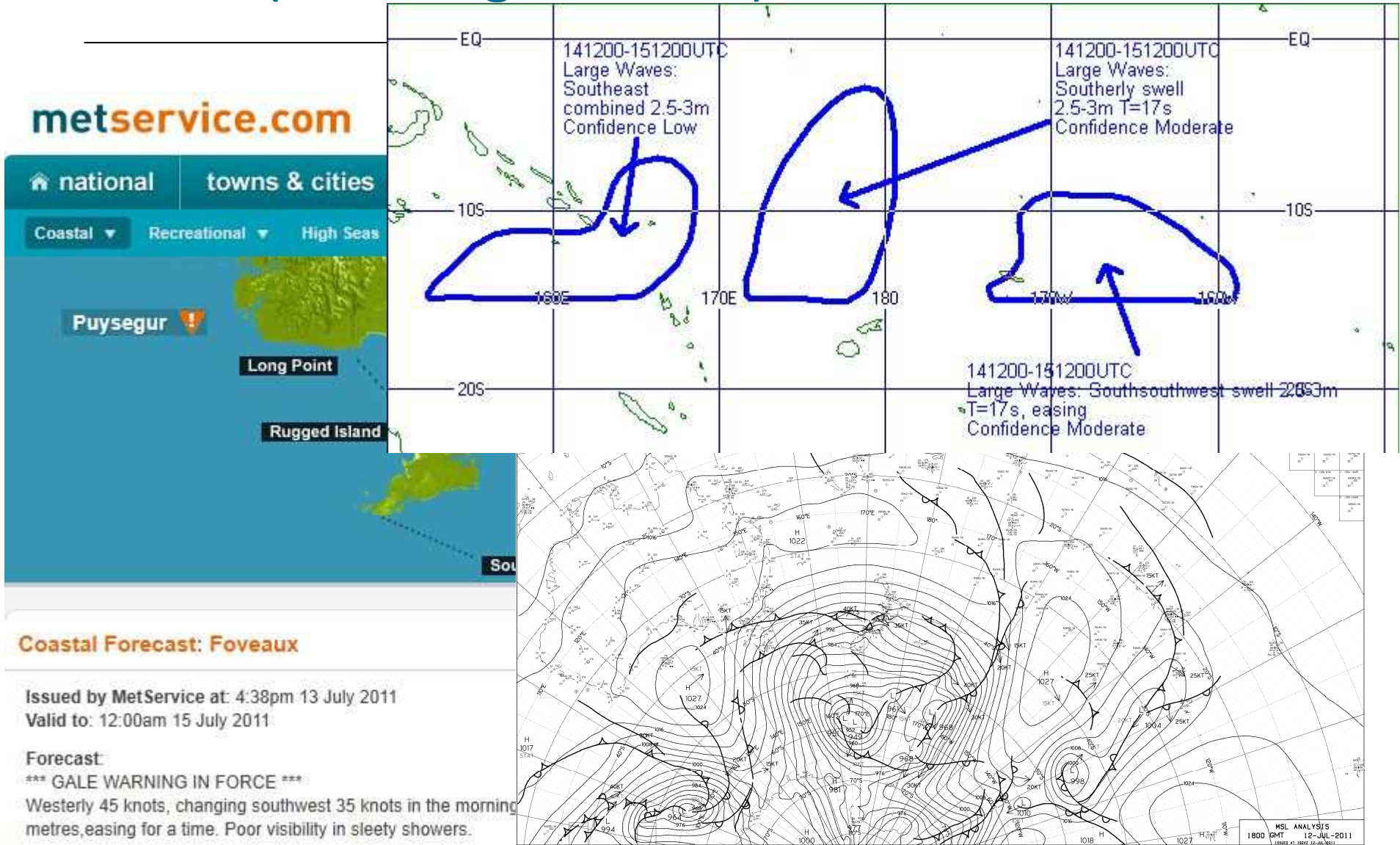
ISSUED BY MetService AT
1:05 pm 13-Jul-2011

Further heavy snow to low levels in south Westland and Fiordland today and Thursday morning. A period of heavy rain in the Tararua ranges today. Northwest gales between Napier and Masterton easing this evening. Heavy snowfalls for much of Southland and Clutha tonight and tomorrow.

A strong cold westerly flow is expected to continue over New Zealand today. A series of fronts will bring further rain or showers to western areas of both islands today. Further heavy snowfalls are expected in South Westland and Fiordland today with snow lowering to about 300 metres in South Westland and near sea-level in Fiordland. Much colder air is expected to move onto southern New Zealand during this afternoon and evening. From this evening snow is expected down to sea-level in parts of Southland and Clutha. Snow showers should continue throughout Thursday in Southland and Clutha and a heavy snow warning is now issued for some substantial accumulations during this time. Snow is likely to affect all the main Alpine Passes and also many roads in Southland and Otago from tonight. Motorists are advised to take extra care and check road conditions before travelling. With strong cold southwesterlies and snow showers forecast for Southland and Clutha tomorrow, farmers may wish to consider shelter for any vulnerable animals. A heavy rain warning is also in place for the Tararua ranges during Wednesday with 100-140mm expected. Also northwest gales today between Napier and Masterton should ease this evening.



RSMC (including SWFDDP)

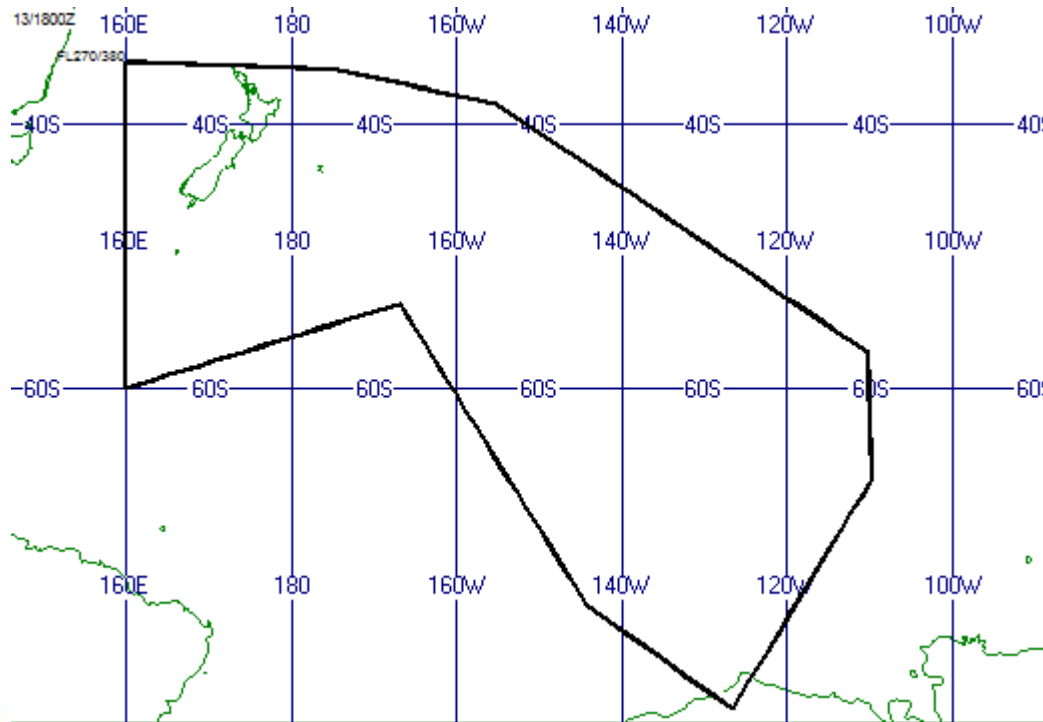


Aviation Forecasting Unit

TAF NZAA 130501Z 1306/1406 30015G30KT 9999 -SHRA SCT030TCU TEMPO 1306/1323 7000 SHRA SCT030 TEMPO 1323/1404 4000 RA SCT030 TEMPO 1404/1406 6000 SHRA SCT020 =

TAF NZWN 130501Z 1306/1406 35020G35KT 9999 -SHRA SCT030 TEMPO 1317/1322 6000 SHRA SCT020TCU BECMG 1322/1324 32010G20KT =

TAF NZCH 130501Z 1306/1406 30015G25KT CAVOK BECMG 1312/1314 28005KT BECMG 1401/1403 21012KT =



International Aviation - MetJet (20110713071704 metjet.metra.co.nz) - Windows Internet E...

http://metjet.metra.co.nz/MetJetBrief.php?BRIEFING=GET&session=RbP6sDXUKRgQATQb&User=PETER_KREFT&

2011-07-13 07:17:04Z Print Brief PDF Close Brief

METJET
Weather Briefing

ARFOR Listings:
NOTE: ALL HEIGHTS IN FEET AMSL (WIND:TRUE/SPEED:KT)
CLOUD AMOUNTS: FEW 1-2/8 SCT 3-4/8 BKN 5-7/8 OVC 8/8
USE OF CB IMPLIES ASSOCIATED TS AND THE OCCURRENCE OF SEVERE ICING AND SEVERE TURBULENCE

TK: issued 12-23.20 UTC - VALID 2300 TO 1200 UTC

ARFOR TK VALID 2300 TO 1200 UTC

1000	30025
3000	29035
5000	29040 PS03
7000	29045 MS01
10000	28050 MS07

FZL 6500FT.
VIS 30KM REDUCING TO 6000M IN SHRA, 4000M IN +SHRAGS.
CLD AREAS BKN CUSC 2500 TOPS 8000, BASE 1200 TOPS ABV 10000 IN SHRA.
SCT EMBD TCU AND ISOL EMBD CB MAINLY SOUTH OF ABOUT OHURA.
WX ISOL SHRA. BECMG OCNL SHRA FM SOUTH WITH FEW +SHRAGS ABT MT TARANAKI.
TURB OCNL MOD ABOUT/E RANGES, SEVERE AS PER SIGMET.

CP: issued 12-23.28 UTC - VALID 2300 TO 1200 UTC

ARFOR CP VALID 2300 TO 1200 UTC

3000	30025
5000	29045 PS03
7000	29050 MS01
10000	28055 MS07

FZL 6500FT.
VIS 30KM REDUCING TO 3000M IN RA, 5000M IN SHRA.
CLD AREAS BKN CUSC 3000 TOPS 8000 BASE 2000 TOPS ABV 10000 IN SHRA. SCT EMBD TCU, MAINLY IN W. ISOL EMBD CB IN WEST.
WX OCNL SHRA IN WEST, BECMG OCNL RAIN. SCT SHRA ELSEWHERE.
TURB OCNL MOD, SEVERE AS PER SIGMET.

FIR - SIGMET Listings

NZZC:
NZZC SIGMET 12 VALID 130640/131040 NZKL-
NZZC NEW ZEALAND FIR SEV TURB FCST ABT/E OF RANGES S OF NZNS/NZWB
BLW FL120 MOV N 10KT NC=

NZZC:
NZZC SIGMET 14 VALID 130644/131044 NZKL-
NZZC NEW ZEALAND FIR SEV TURB FCST ABT/E OF RANGES S OF NZAA N OF
NZWB/NZNS BLW FL100 STNR NC=

Internet | Protected Mode: On 100%



Weather Presentation and Communication



Post-Graduate Meteorological Training



- MetService recruits and trains university graduates with BSc, BSc(Hons) or MSc in mathematics, physics or geophysics (with a strong maths/physics background) to work as meteorologists in its National Forecasting Centre.
- Meteorologist training courses are generally run two out of every three with up to 12 participants. The next course is planned for 2012.
- The meteorologist training programme runs for 41 weeks.
- Concurrently with the formal training at MetService, candidates study for a Post-Graduate Diploma in Meteorology or Post Graduate Certificate in Meteorology, offered by Victoria University of Wellington. University lectures are "embedded" in MetService's formal meteorologist training programme, and lecturers include academic staff from Victoria University of Wellington as well as subject matter experts from MetService.
- Candidates completing all course work and testing satisfactorily spend their second year effectively as an intern, working as a forecaster on shift. Upon successful completion of the second year, MetService will confirm they have met the requirements for graduate Meteorologists (WMO Guidelines).

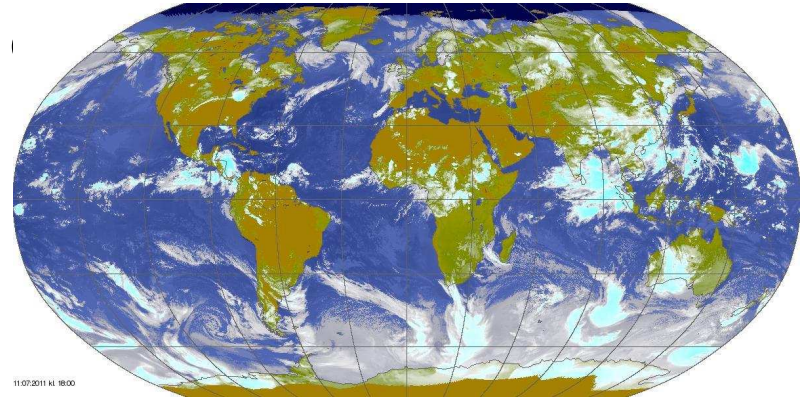


5. PARTNERSHIPS



International Cooperation

- ... is fundamental to meteorology (including climatology)
- Weather and climate do not respect political boundaries, and what goes on in one part of the world will eventually impact the rest of the world
- New Zealand depends on international arrangements for meteorological data and products – the raw material that enables it to deliver services in New Zealand and globally



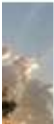
Partnerships - WMO system

Programme /Activity	Partners	Governance
RSMC Wellington	WMO Pacific Islands NMSs SPREP SPC	RA V Tropical Cyclone Committee (TCC) Tropical Cyclone Operational Plan (TCOP)
SWFDDP	WMO Pacific Islands NMSs BoM/AusAID ECMWF Met Office (UK) US NOAA JMA MFAT/MfE	Project Management Committee



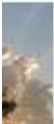
Partnerships with Pacific Islands

Project	Partners	Governance
Bilateral	<ul style="list-style-type: none"><li data-bbox="751 370 1192 695">• Cook Islands – mSTAR Aitutaki, iSTAR Raro, Rarotonga GUAN programme (GCOS, JICA, VCP)<li data-bbox="751 711 1192 987">• Solomon Islands – iSTAR Henderson Airport, GUAN Facility (US NOAA TSP)<li data-bbox="751 1003 1192 1214">• Kiribati – mSTAR Tarawa, GUAN Facility (Met Office UK)<li data-bbox="751 1230 1192 1442">• Tuvalu - Funafuti GUAN Facility, RANET (Met Office UK)	Contracts & MoU



Partnerships with Pacific Islands

Project	Partners	Governance
Bilateral	<ul style="list-style-type: none"><li data-bbox="751 375 1224 610">• Tonga – RANET (US NOAA, Munich re Insurance, DMO)<li data-bbox="751 630 1199 865">• PNG – Port Moresby GUAN Facility (US NOAA GCOS TSP)<li data-bbox="751 885 1213 1247">• Vanuatu – Bauerfield GUAN Facility (US NOAA TSP), Small Islands Climate Change Project (Italy)<li data-bbox="751 1266 1083 1377">• Niue – AWS, RANET,<li data-bbox="751 1396 1199 1507">• Fiji – RSMC Backup, Technical	Contracts & MoU



Partnerships with other development partners

Project	Partners	Governance
PI GCOS Support Programme	US NOAA GCOS MetService NIWA SPREP Pacific Islands NMSs	Contract & Sub-contracts
Pacific RANET Regional Hub	USNOAA NWS Bureau of Met MetService Pacific Islands NMS SPREP SOPAC UN SIDS Net Unit, NY	MoU/Exchange of Letters



6. PARTNERSHIPS – ASPIRING MODELS?



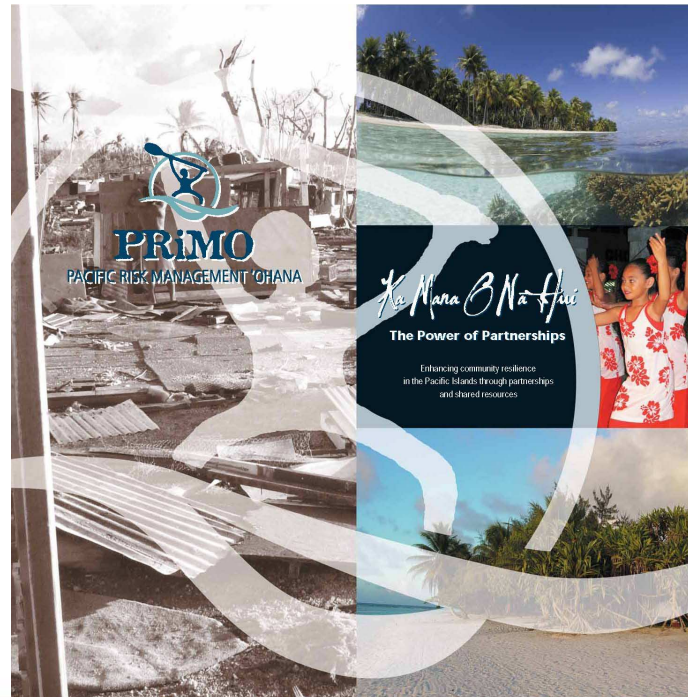
Partnership models

- International – WMO, UNEP, UNDP, FAO, World Bank, ESCAP, ADB, UNESCO/IOC, etc..
- Regional - The Pacific Plan
- National – National Development Plans
- North- South Cooperation (NGOs included)
- South-South Cooperation (e.g. the SSC Project between Pacific and Caribbean SIDS on climate change adaptation and Disaster Risk Reduction)



Partnership models

- US-NZ Climate change partnership (US PI GCOS Support Program)
- US Pacific Risk Management Ohana (PRiMO)
- US Pacific Climate Information System (PaCIS)
- Australia International Climate Change Adaptation Initiative (ICCA)



Summary

- Welcome to 'Partnership, Inc' world
- Trust and respect
- Good governance mechanisms
- Ownership matters!
- Biggest opportunity may lie in 'doing things' differently;
 - RA V GFCS South-South Cooperation (RA V SSC)?

