



## INFORMATION FOR PARTICIPANTS

Fourth Coordination Meeting of the World Weather Information Service  
(WWIS) Website Hosts (WWIS-4)

27-29 November 2013

### VENUE:



The meeting will be held in Warsaw, Poland at the Institute of Meteorology and Water Management – National Research Institute (IMGW-PIB). The Institute is located approximately 4 km from the hotel. Detailed information on how to reach the Institute is provided below.

### **TRAVEL ARRANGEMENTS:**

The workshop is intended to begin at **0900 hrs** on **27 November 2013**. It shall close at **1700 hrs** on **29 November 2013**.






## HOW TO ARRIVE AT THE VENUE FROM THE AIRPORT:

### OPTIONS:

1. PUBLIC TRANSPORT
2. TAXI



-  Warsaw Chopin Airport
-  Maria Hotel
-  IMGW-PIB



## 1. PUBLIC TRANSPORT:

### HOW TO ARRIVE IN THE MARIA HOTEL?

The Warsaw Public Transport Authority (Zarząd Transportu Miejskiego, ZTM) runs bus line **175** which departs from the Airport.

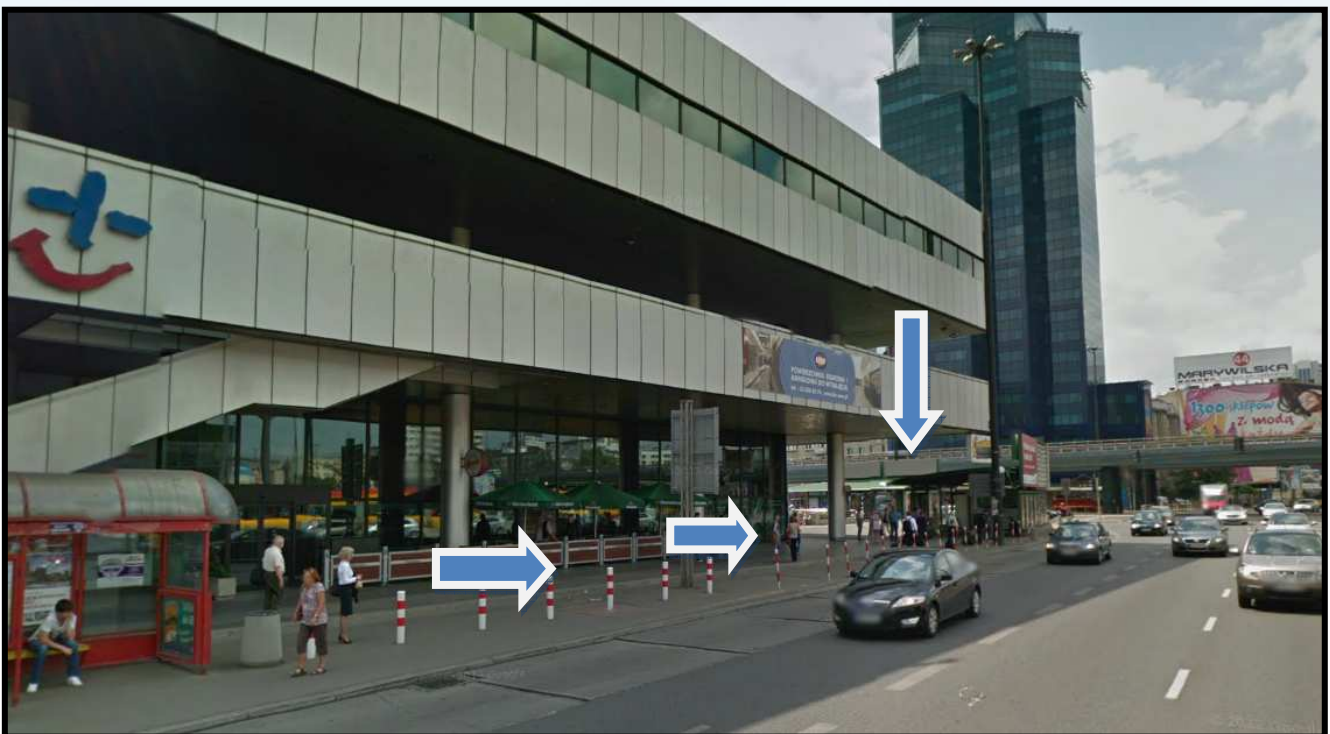


The cheapest way to get to the hotel is by bus (**175**) and then by tram (**either 17 or 33**):

#### **175 line (DIRECTION » Pl. Piłsudskiego)**

Running daily between 04:57 - 22:57

Trip duration from the airport to the Central Railway Station is about 30 minutes. You want to get off at **Dworzec Centralny** stop. Subsequently you need to use the underground pass as illustrated in the picture below.



From there you need to find the tunnel exit which is just under the viaduct on the right.



Different view:



Subsequently you need to switch to **tram 17 or 33** (trams depart every few minutes).

**Tram No. 17 or 33 (DIRECTION » Metro Młociny)**

Running daily between 04:40 - 23:11

The trip duration to the hotel is approximately 12 minutes. From **Dworzec Centralny** stop you need to get off at **Rondo "Radosława"** (7<sup>th</sup> stop).



**Maria Hotel is located right across the street from the tram stop.** You will need to go back a few meters to the pedestrian crossing. It is located by a petrol station and McDonald's.



For details on timetables and journey duration please refer to:

<http://bit.ly/It95H7>

<http://bit.ly/168StDa>

<http://bit.ly/168SGGF>

Tickets can be bought from the driver (PLN 4.40\*)

You can also buy tickets from a ticket machine located at the airport.

A 3-day City Travelcard (ticket) costs (PLN 30.00) and entitles to unlimited number of journeys by bus, tram and subway for three days since its validation.

**\*4 PLN (polish zloty) is approximately 1 €**

## 2. TAXI:

From the airport you can also get to the hotel with a taxi which you would find most convenient and relatively inexpensive.

**Ele Taxi, Sawa Taxi, Super Taxi are companies recommended by Warsaw Chopin Airport.**

Approximate prices:

Airport to Hotel	50 PLN (12 €)
Airport to venue	80 PLN (20 €)
Hotel to venue	40 PLN (10 €)

### 3. MARIA HOTEL

Maria Hotel is situated in the centre of Warsaw. In the vicinity of the hotel there are situated modern customer service points and shopping centres such as: ARKADIA SHOPPING MALL which is the largest shopping complex in Central Europe.



**Maria Hotel**

Al. Jana Pawła II 71  
Street

01-038, Warsaw  
POLAND

tel: +48 22 838 40 62 or  
63

e-mail:  
[repcja@hotelmaria.pl](mailto:repcja@hotelmaria.pl)

Website:

<http://www.hotelmaria.pl/en/>

**The hotel is located right across the Rondo "Radosława" tram stop.**

GPS Position: 20°59'1"E, 52°15'11"N  
WARSAW INTL AIRPORT (11.00 km)

#### **BLOCK-BOOKING:**

IMGW-PIB reserved a number of rooms for the participants at a special rate **with a deadline on 16/11/2013**. There is no reservation form. Therefore, you are kindly asked to contact the hotel directly **before the deadline**, preferably by e-mail at the following address: [repcja@hotelmaria.pl](mailto:repcja@hotelmaria.pl)

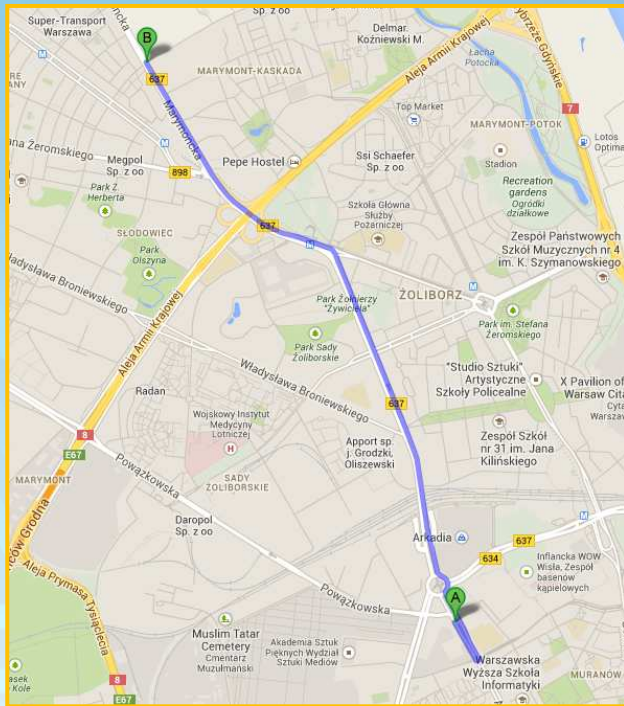
**Please refer to reservation number: 906 and password: WMO**

**The price for a single room with breakfast is:**

222 PLN (about 53 Euro) during weekend  
290 PLN (about 70 Euro) during working week



### 3. IMGW-PIB HEADQUARTERS



**Maria Hotel**

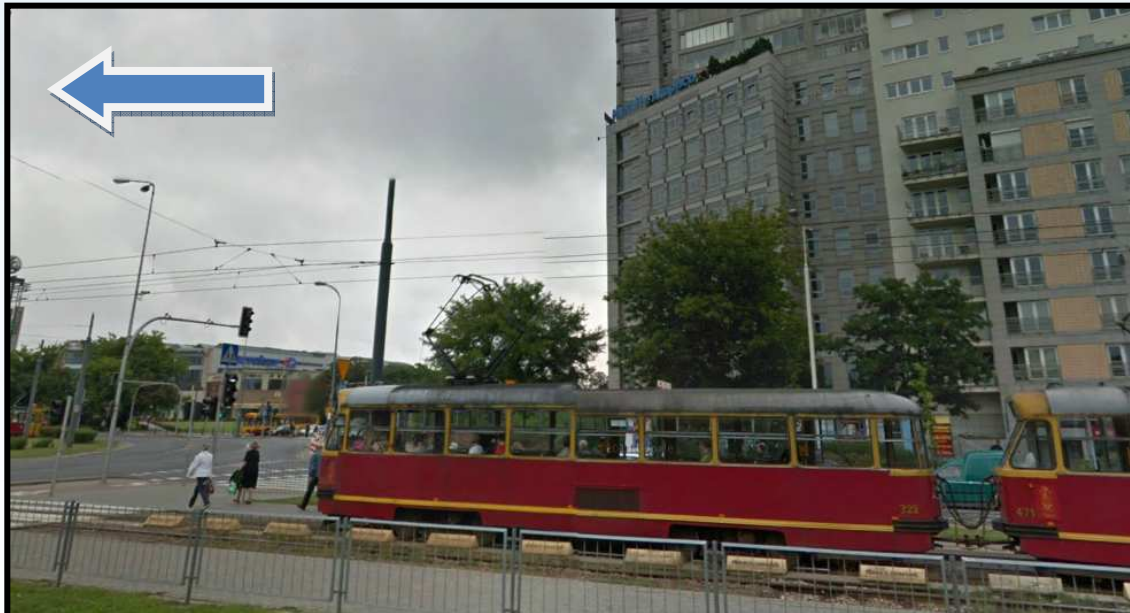


**IMGW-PIB HQ**

The best way to get to IMGW-PIB HQ from the hotel is by tram (17):

**Tram No. 17 (DIRECTION » Metro Młociny)**  
Running daily between 04:49 - 23:40

You need to go to **Rondo "Radosława" stop** and take **tram No. 17** – **this is the same stop and the same direction as before.**



You need to get off at the **Podlesna-IMiGW stop** (7<sup>th</sup> stop). Which is where the venue is located. The trip duration is 14 minutes.

For details on timetables and journey duration please refer to:  
<http://bit.ly/19QeBQh>

## MONEY:

Local currency in Poland is polish zloty (PLN). Four zlotys is equivalent to approximately 1 Euro.

Currencies can be exchanged at the bureau de change located in the Arkadia Shopping Mall near the hotel (0 floor). Most common credit cards (e.g., Visa, MasterCard) are accepted at hotels and stores.



Basic floor plan of the Arkadia Shopping Mall

## ELECTRICITY:

Electricity in Poland is 230V, 50Hz AC (French standard). Plug sockets are round with two round-pin sockets. If do not have a plug convertor then the best place to buy one is at the electrical outlet located in ARKADIA.

## WEATHER AND CLIMATE:

For the month of November in Warsaw, kindly note the following information below:

Mean daily minimum:	0.3 °C
Mean daily maximum:	5.5 °C
Mean number of precipitation days:	15
Mean total precipitation:	36.6 mm



## ADDITIONAL INFORMATION:

Should you require further information concerning the meeting arrangements, please contact:

**Mr Paweł Rola**

Institute of Meteorology and Water Management – National  
Research Institute (IMGW-PIB)

Tel: + 48 22 56 94 539

E-mail: [pawel.rola@imgw.pl](mailto:pawel.rola@imgw.pl)

**Mr Samuel W. Muchemi**

Public Weather Services (PWS)

World Meteorological Information (WMO)

E-mail: [smuchemi@wmo.int](mailto:smuchemi@wmo.int)