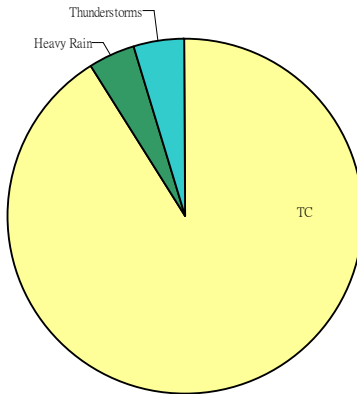


SWIC – Access Statistics (January to December 2006)

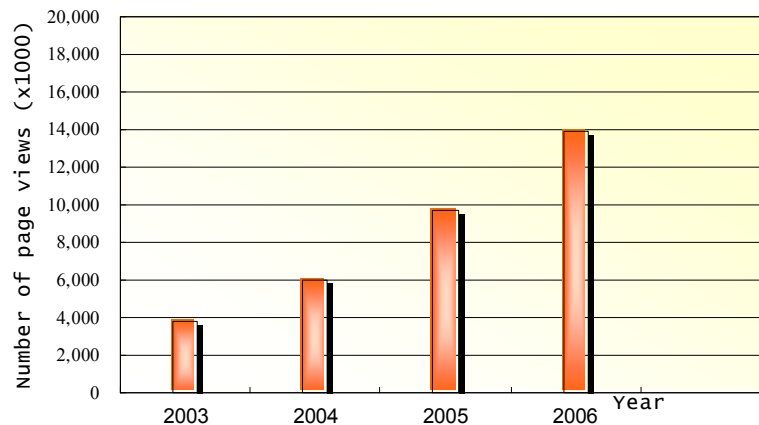
1. Figure 1 shows that for the period January to December 2006, the access for TC information (89%) grossly outnumbers that of thunderstorm (7%) and heavy rain/snow (4%).

Fig 1 - SWIC - Hits of TC, Heavy rain and Thunderstorms between Oct 2005 and Sep 2006



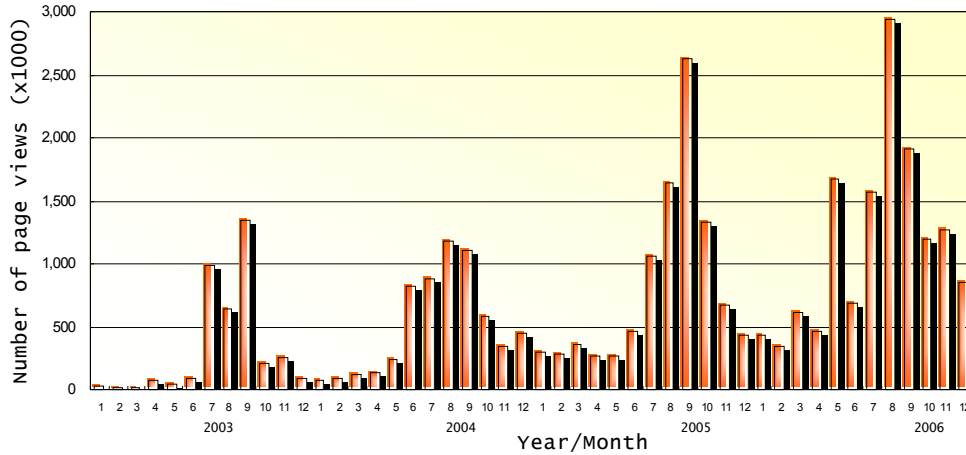
2. Figure 2 indicates that the number of visits to SWIC has continued to rise steadily from 3.8 million in 2003 to almost 14.0 million in 2006. This represents a growth rate of over 50% per annum during this 4-year period.

Fig. 2: SWIC - Access Statistics for all pages (TC, Heavy rain/snow, Thunderstorms) by year



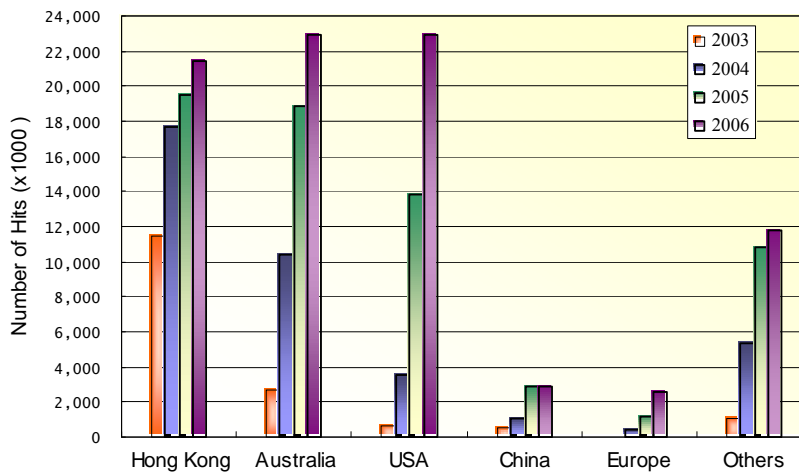
3. Figure 3 shows that access to the SWIC web site normally peaks during the northern hemisphere summer months. There was a sharp and rather unseasonal increase in May 2006 when Typhoon Chanchu entered the South China Sea.

Fig 3: SWIC - Access Statistics for all pages (TC, Heavy rain/snow, Thunderstorms) by months



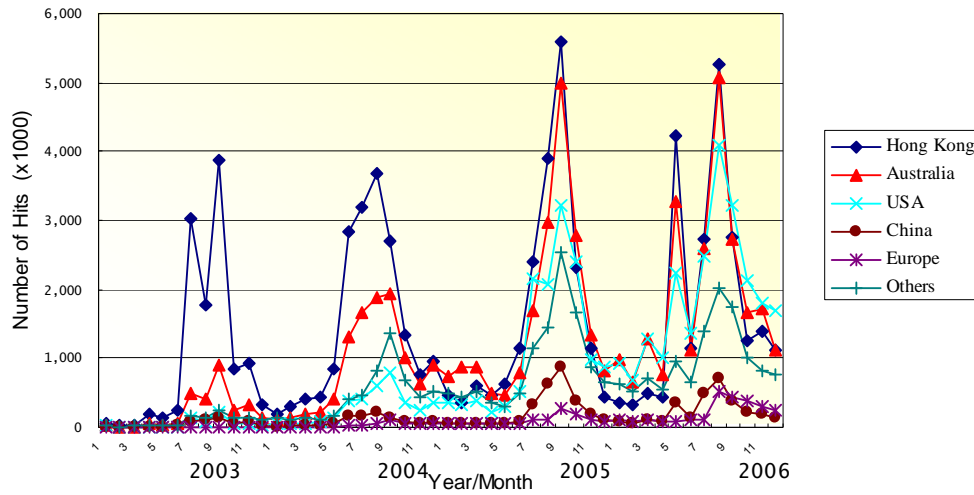
4. Figure 4 shows the top 5 most popular countries/territories to access SWIC. The hit rates of Hong Kong, Australia and USA head the rest of the world by a large margin.

Fig 4: SWIC - Access Statistics for most popular countries by year



5. Figure 5 shows that while the local access to SWIC is maintained, SWIC has gained a strong foothold in both Australia and USA during the last 2 years.

Fig 5: SWIC - Access Statistics for most popular countries by months



Prepared by SWIC Coordinator
Hong Kong Observatory
January 2007