

TurboWeb

a web based version of TurboWin

By Martin Stam and Bert de Vries

KNMI

History

- Turbo2 (1990-1992)
- Turbo1 (1991-2002)
- Turbo5 (1992-2000)
- Turbo6 (1992-1996)
- TurboWin-MS Windows (1996-present)
- TurboWin-Web-based (present)

Why web based

- Download code/program over the internet
- No installation procedure
- Always latest version
- Run on a variety of computers (e.g. Windows, Linux, Mac, Solaris)

TurboWeb on MS Windows

Call sign

Masked call si...

Date & Time

Position

Course & Speed

Pressure (read)

Pressure (MSL)

Amount of pres...

Char. press. tend.

Present weather

Past weath. 1st phen

Past weath. 2nd phen

Visibility

True wind speed

True wind dir.

(Wind) wave ht

(Wind) wave per

1st swell dir

1st swell height

1st swell period

2nd swell dir

2nd swell height

2nd swell period

Observer

Total cloud cover

Amount CI (Cm)

Height lowest...

CI

Cm

Ch

Air temp

Wet-bulb temp

Dew-point

Seawater temp

Icing

Ice

--- adding data: Input menu, toolbar icons or click on the text labels ---

undefined

TurboWeb on Linux

TurboWeb

File Input Output Maintenance Themes Info

PTIT [clock] [compass] [flag] [wave] [ship] [globe] [microphone] [speaker] [Ct] [Cm] [Ch] [cloud] [hand] [tools] [battery] [signal]

Call sign	<input type="text"/>	Visibility	<input type="text"/>	Total cloud cover	<input type="text"/>
Masked call ...	<input type="text"/>	True wind speed	<input type="text"/>	Amount Cl (Cm)	<input type="text"/>
Date & Time	November 2010 9.00 UTC	True wind dir.	<input type="text"/>	Height lowest c...	<input type="text"/>
Position	<input type="text"/>	(Wind) wave ...	<input type="text"/>	Cl	<input type="text"/>
Course & Speed	<input type="text"/>	(Wind) wave per	<input type="text"/>	Cm	<input type="text"/>
Pressure (read)	<input type="text"/>	1st swell dir	<input type="text"/>	Ch	<input type="text"/>
Pressure (MSL)	<input type="text"/>	1st swell heig...	<input type="text"/>	Air temp	<input type="text"/>
Amount of pre...	<input type="text"/>	1st swell period	<input type="text"/>	Wet-bulb temp	<input type="text"/>
Char. press. tend.	<input type="text"/>	2nd swell dir	<input type="text"/>	Dew-poi...	<input type="text"/>
Present weather	<input type="text"/>	2nd swell heig...	<input type="text"/>	Seawater temp	<input type="text"/>
Past weath. 1st phen	<input type="text"/>	2nd swell period	<input type="text"/>	Icing	<input type="text"/>
Past weath. 2nd phen	<input type="text"/>	Observer	<input type="text"/>	Ice	<input type="text"/>

--- adding data: Input menu, toolbar icons or click on the text labels ---

undefined

TurboWeb a Java Web Start application

- **Portability:** Java Web Start is available on Windows, Solaris, and Linux, and is expected to be ported to other platforms.
- **Caching:** Applications launched with Java Web Start are cached locally. Thus, an already-downloaded application is launched on par with a traditionally installed application.
- **Maintainability:** If the remote application is updated, Java Web Start updates the locally cached version at the application's next invocation.
- **Easy launching:** Java Web Start allows applications to be launched independently of a Web browser. The application can also be launched through desktop shortcuts, making launching the Web-deployed application similar to launching a native application.
- **Ability to work offline:** An application can be used in situations where launching through the browser is inconvenient or impossible.

New output option (obs to server)

TurboWeb

File Input **Output** Maintenance Themes Info

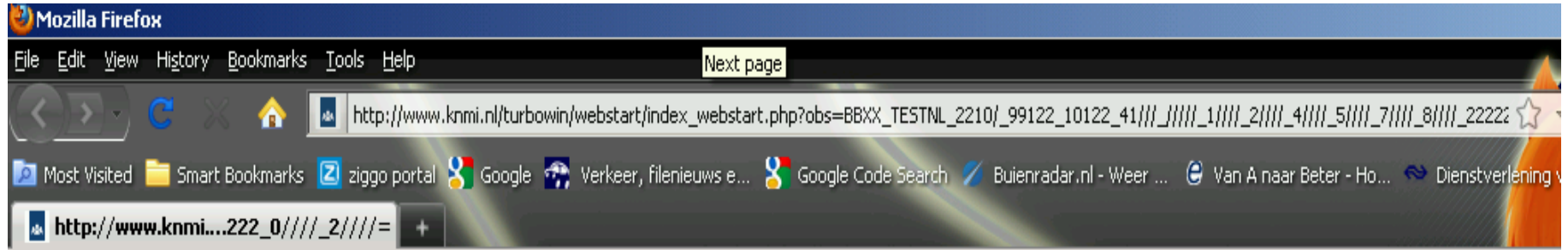
Obs to server (internet)
Obs by E-mail (internet)...
Obs to file...

Call sign	TESTNL	Visibility		Total cloud cover	
Masked call si...		True wind speed		Amount CI (Cm)	
Date & Time	? November 2010 10.00 UTC	True wind dir.		Height lowest ...	
Position	12 - 12 North 12 - 12 East	(Wind) wave ht		CI	
Course & Speed	068 - 112 degr 6 - 10 knots	(Wind) wave per		Cm	
Pressure (read)		1st swell dir		Ch	
Pressure (MSL)		1st swell height		Air temp	
Amount of pres...		1st swell period		Wet-bulb temp	
Char. press. tend.		2nd swell dir		Dew-point	
Present weather		2nd swell height		Seawater temp	
Past weath. 1st phen		2nd swell period		Icing	
Past weath. 2nd phen		Observer		Ice	

--- adding data: Input menu, toolbar icons or click on the text labels ---

BBXX TESTNL 2210/ 991 22 101 22 4111 1111 1111 2111 4111 5111 7111 8111 22222 0111 2111=

Direct feedback from Met Service



message of Meteorological Service server:

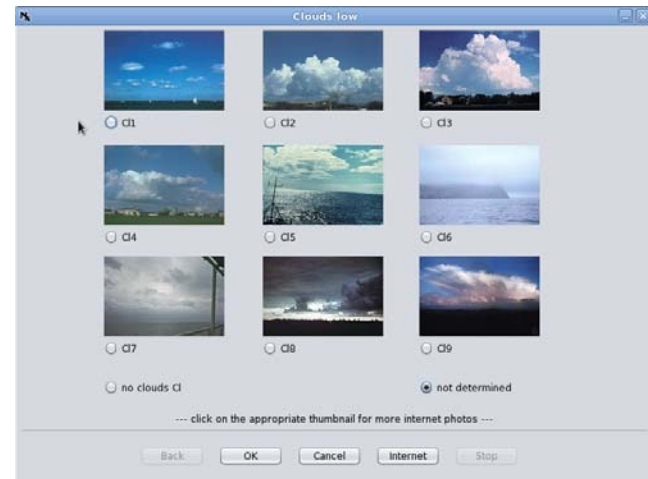
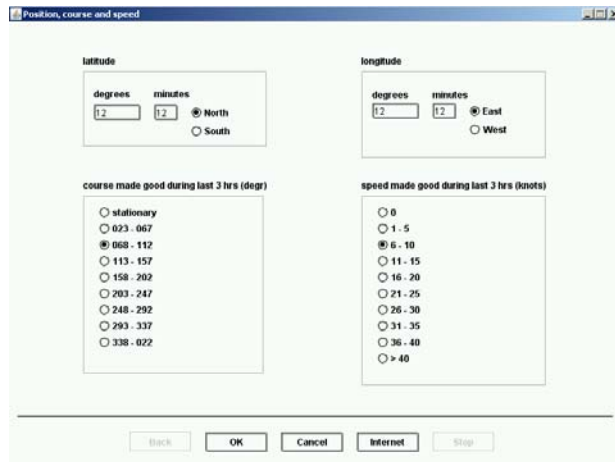
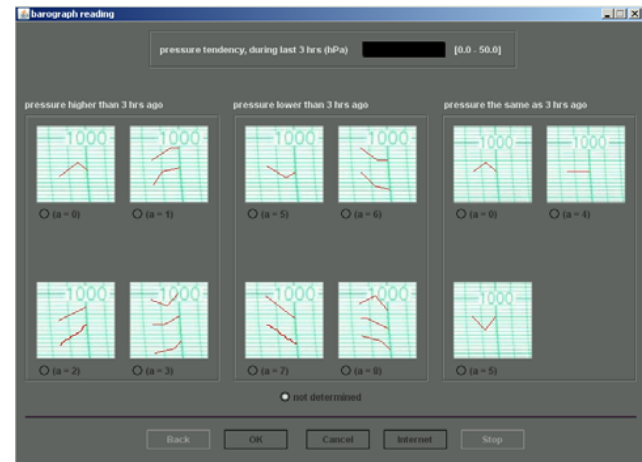
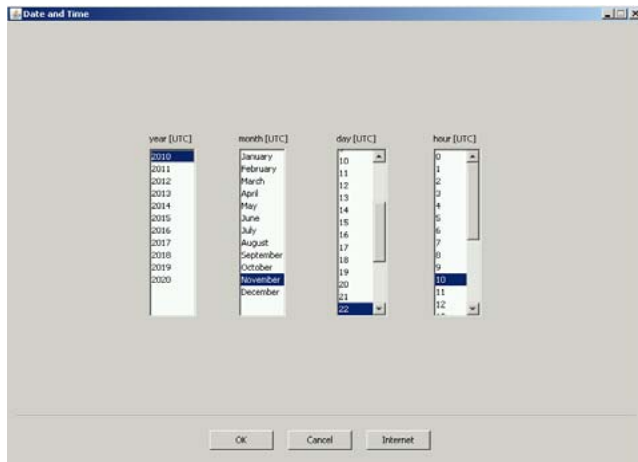
22-11-2010 09:43:54 UTC

received obs = BBXX TESTNL 2210/ 99122 10122 41/// 1/// 2/// 4/// 5/// 7/// 8/// 22222 0/// 2///=

obs further routed to: martin.stam@knmi.nl successfully

many thanks for your cooperation

TurboWeb with Themes



TurboWeb

- November 2010: Start test Ernest Shackleton (UK)
- January 1011: Pelagia (NL)
- Looking for more ships with internet connection

TurboWeb

- http://www.knmi.nl/turbowin/webstart/turbowin_jws.jnlp