

An aerial photograph of the oil tanker ship BERGE BRAGD, painted in a bright red color. The ship is viewed from an elevated angle, showing its deck with various structures, pipes, and equipment. The name 'BERGE BRAGD' is clearly visible on the side of the hull. The ship is moving through blue water, leaving a white wake. In the background, a long, narrow pier or breakwater extends into the sea, and a distant shoreline with buildings and trees is visible under a clear sky.

Royal Dirkzwager

# Ship2Report

Orlando 8 till 10 December 2010

Bert de Vries  
PMO-KNMI



**Royal Netherlands  
Meteorological Institute**  
*Ministry of Transport, Public Works  
and Water Management*

To visit the Dirkzwager  
Ship2Report web application,  
go to:

<http://www.dirkzwager.com/>

Click on: “ go to the main site>>





KONINKLIJKE  
ROYAL DIRKZWAGER  
DIRKZWAGER



[Go to the mainsite >>](#)



**Royal Netherlands  
Meteorological Institute**  
*Ministry of Transport, Public Works  
and Water Management*

Fill out in the member login.

The “login code” and “password”  
will be given to you by:

The Dutch PMO-Office

Send a request to:  
[pmo.office@knmi.nl](mailto:pmo.office@knmi.nl)

You will be given a temporary  
“log-in code” to be used for instruction  
reasons only.

Click: [knmi.ship2report.com](http://knmi.ship2report.com)

Royal Dirkzwag... x Royal Dirkzwag... x Royal Dirkzwag... x Royal Dirkzwag... x Royal Dirkzwag... x Royal Dirkzwag... x Adobe - Flash PL... x flash video van ... x

www.dirkzwager.com/home.cfm

VOS Information VOS observations cou... Weather observat... Pierre's trajectoire st... Singel position Dutch... Royal Dirkzwager The... Live Ships Map - AIS... Andere bladwijzers

Deze pagina is geschreven in het Engels Wilt u deze laten vertalen? Vertalen Nee Opties x

 **ROYAL DIRKZWAGER**  
THE MARITIME INFORMATION & SERVICE PROVIDER

Welkom... Sinds 05-01-2010 Royal Dirkzwager reported 24501 vessels in the Port of Rotterdam New York: 6:28:05 - Rotterdam: 11:28:05 - Shanghai: 17:28:05

Home | Company | Products & Services | Contact | Careers | Webcams | Links | News | Downloads | Members

Search  Go

Home

## Welcome at Royal Dirkzwager Online

### Setting synergy in motion

When you are dealing with ships you need to have reliable and up to date information about the actual positions and movements. The more precise the information, the more efficient you can perform your business.

Royal Dirkzwager offers a wide range of port related services to local shipping communities. Our services include online real-time validated information, communications, maritime & nautical services and ICT development.

Our products & services optimise operations and speed up business processes, thereby increasing efficiency and service levels to customers, making it the service of choice for customers who wish to grow their individual business in the dynamic maritime markets.

A range of features, services and innovative concepts being launched progressively are all designed to bring significant savings in cost and time for port users.

#### MEMBER LOGIN

#### Latest news

##### Dirkzwager Mobile



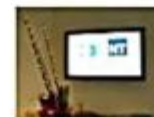
Dirkzwager informatie nu ook mobiel beschikbaar  
[More information >>>](#)

##### CruiseSMS



Met CruiseSMS hoeft u de boot niet meer te missen en bent u altijd als eerste op de hoogte van de actuele aankomst, doorkomst- en vertrekijden  
[More information >>>](#)

##### Maritime Narrowcasting met NT Publishers



Dirkzwager en NT Publishers hebben een nieuwe dienst ontwikkeld.  
[More information >>>](#)

Home | Company | Products & Services | Contact | Careers | Webcams | Links | News | Downloads | Members

Copyright 2010 - Royal Dirkzwager All rights reserved | Disclaimer | Sitemap | Toek Bro at cfserv7

foreign\_vos\_inspectio...doc Foreign\_vos\_inspectio...doc

Start 2 M... 3 W... Micr... Ho... Roy... Only... Micr... Inbo... fore... Ner... NL

alle downloads integreer... x

11:26





**Royal Netherlands  
Meteorological Institute**  
*Ministry of Transport, Public Works  
and Water Management*

Your default Ship2Report page will open.

Royal Dirkzwager uses AIS signals to plot vessels on maps. They receive the information about these vessels from Lloyds Database based on their IMO-numbers.

We (UK-DWD-KNMI) have added our VOS IMO-numbers to this database.

Now our VOS stands out from all other Vessels. The colour code is:

UK : **Pink**  
DWD : **Blue**  
KNMI : **Orange**  
A.R. : **Grey**

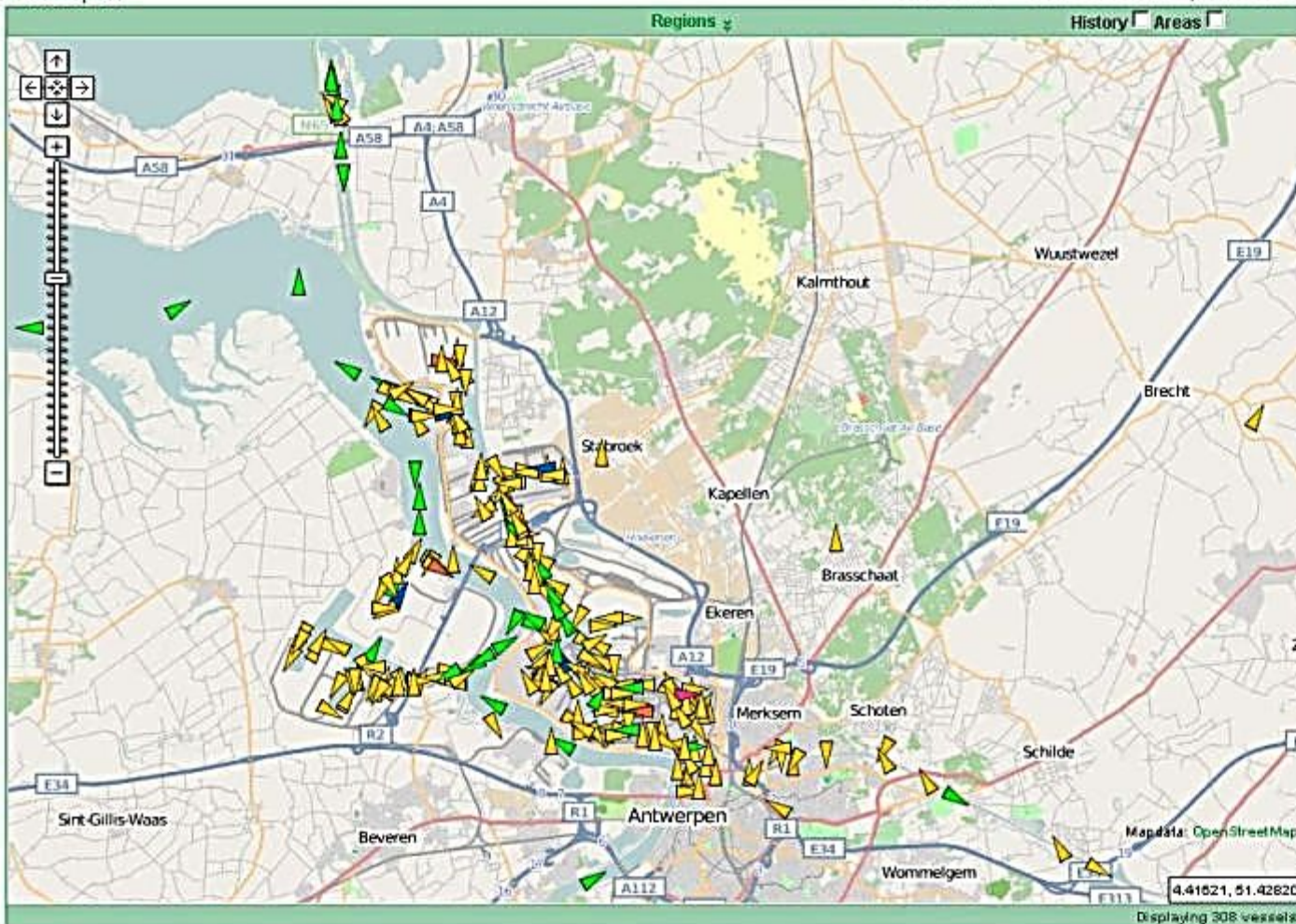


## Antwerpen

Set as Default  Show VOS Vessels only  Full Screen

## Vessels on Map

Enlarge



1 | 2 | 3 | 4 | : Filter

| Name           | IMO Nr. |
|----------------|---------|
| Adelaar        | 0       |
| Aeolus         | 0       |
| Ais rf adviser | 0       |
| Al Rawdah      | 9349564 |
| Alaska         | 0       |
| Albatros       | 0       |

Displaying 5 to 100 of 308 records

## Item Details

Enlarge

No item selected.  
Please select an item in either the map or list.





**Royal Netherlands  
Meteorological Institute**  
*Ministry of Transport, Public Works  
and Water Management*

Check the “ Show VOS Vessels-only”  
checkbox in the top right corner  
to display only VOS vessels in the map.

On the right side of the map, the names  
of the vessels are displayed in a  
separate “ Vessels on map” window.

To enlarge the map click +.

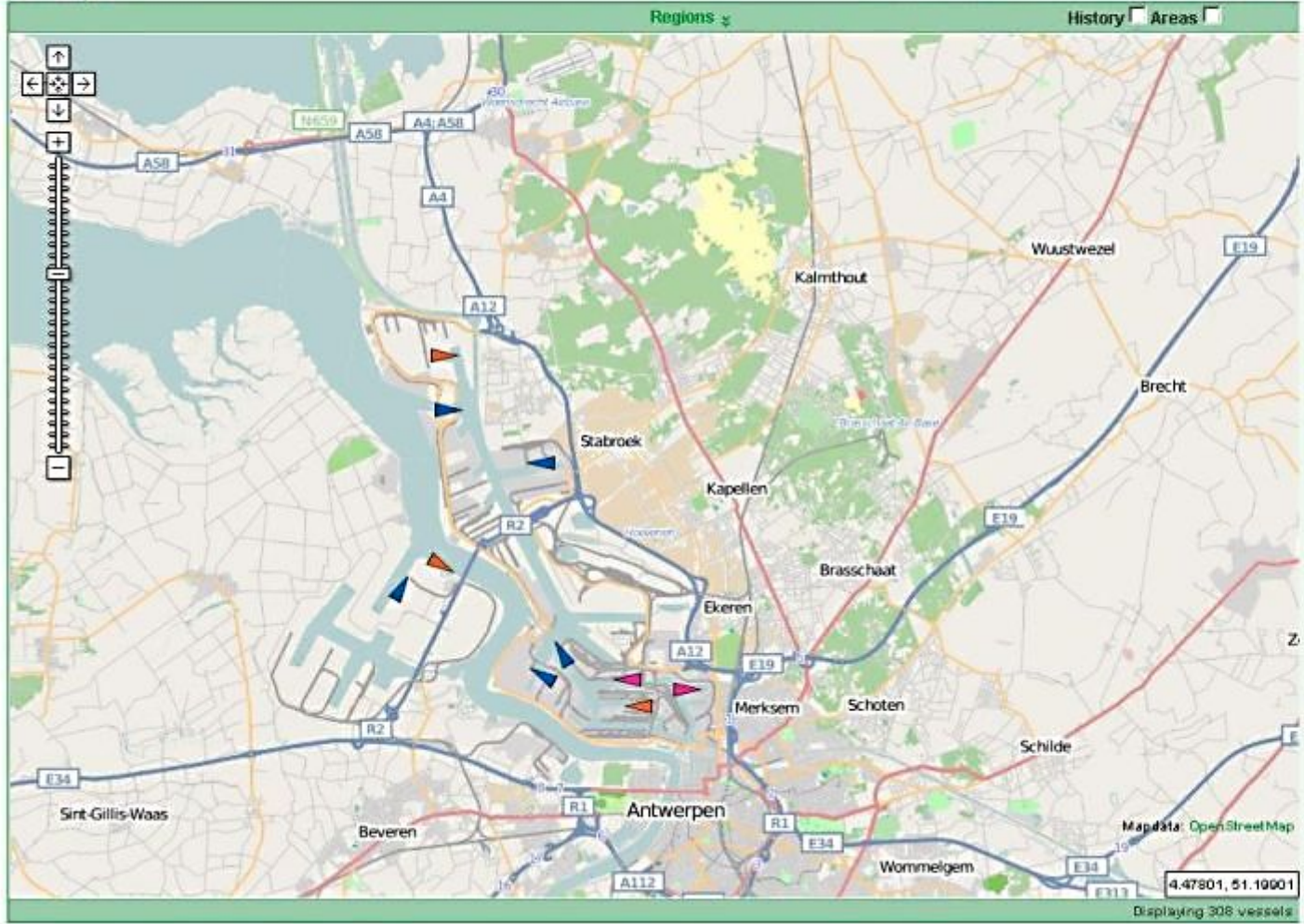




## Antwerpen

Set as Default
  Show VOS Vessels only
  Full Screen

## Vessels on Map



Enlarge

Filter

| Name                 | IMO Nr. |
|----------------------|---------|
| Alphagas             | 9130456 |
| Bastiaan Broere      | 8712154 |
| Chiquita Deutschland | 9015187 |
| Dublin Express       | 9232577 |
| Dutch Emerald        | 9191668 |
| Independent Concept  | 9306213 |

Displaying 1 to 10 of 10 records (Filtered from 308 records)

## Item Details

Enlarge

No item selected.  
Please select an item in either the map or list.



**Royal Netherlands  
Meteorological Institute**  
*Ministry of Transport, Public Works  
and Water Management*

When you click on the full screen button next to the “Show VOS vessels only” Checkbox, the harbour map is shown full screen.

Go to the blue “ Menu bar” above the map and click on the “Subscription” button and move to “ Vessels on Map”. Here are displayed all your favourite harbour locations.

You can add or remove these locations.





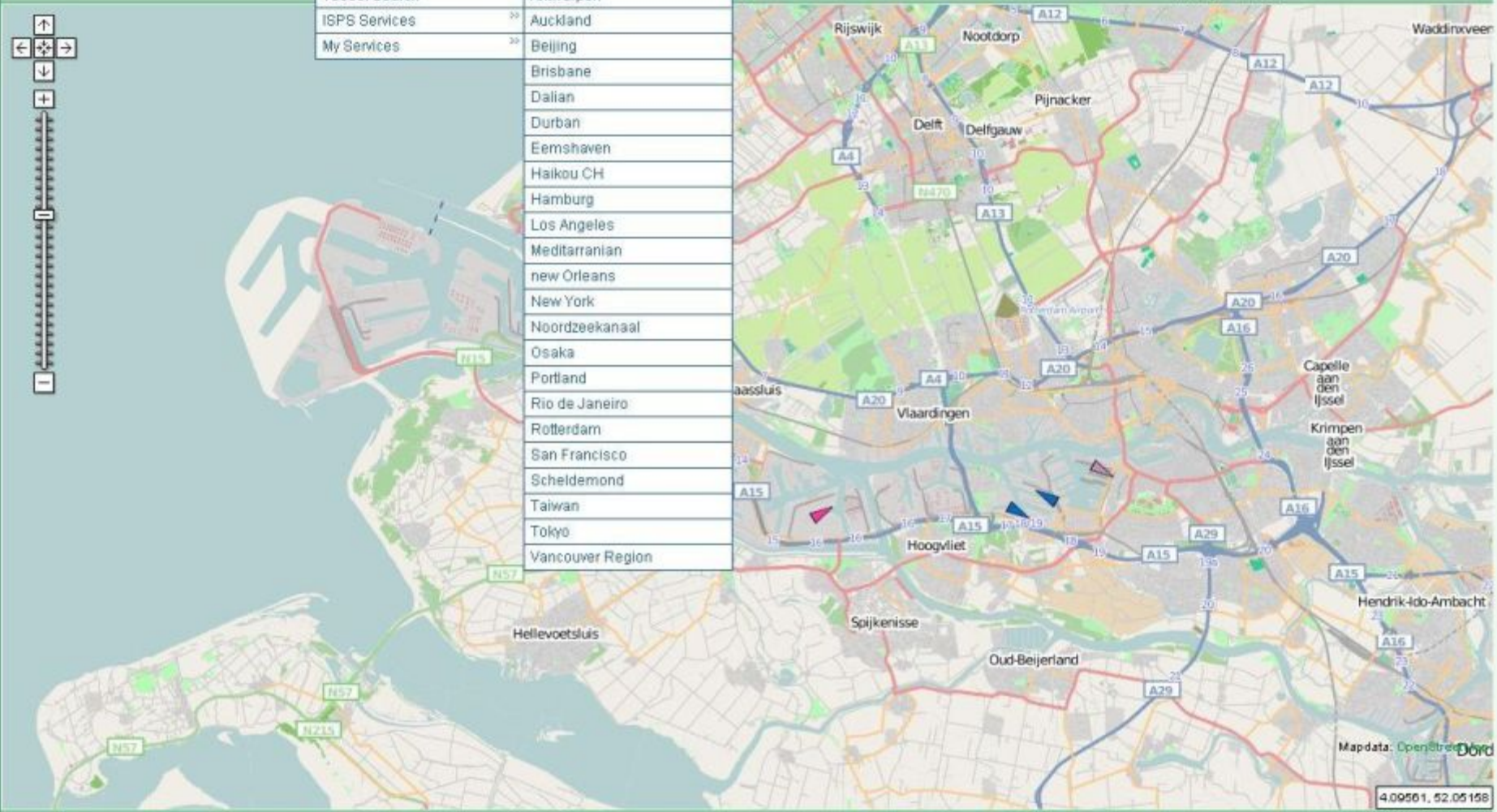
## Rotterdam

|                     |                          |
|---------------------|--------------------------|
| Vessels by Movement | >>                       |
| Vessels on Map      | >> Rotterdam - The Roads |
| Vessel Search       | >> Antwerpen             |
| ISPS Services       | >> Auckland              |
| My Services         | >> Beijing               |
|                     | >> Brisbane              |
|                     | >> Dalian                |
|                     | >> Durban                |
|                     | >> Eemshaven             |
|                     | >> Haikou CH             |
|                     | >> Hamburg               |
|                     | >> Los Angeles           |
|                     | >> Mediterranean         |
|                     | >> new Orleans           |
|                     | >> New York              |
|                     | >> Noordzeekanaal        |
|                     | >> Osaka                 |
|                     | >> Portland              |
|                     | >> Rio de Janeiro        |
|                     | >> Rotterdam             |
|                     | >> San Francisco         |
|                     | >> Scheldemon            |
|                     | >> Taiwan                |
|                     | >> Tokyo                 |
|                     | >> Vancouver Region      |



Set as Default  Show VOS Vessels only  View side modules

History  Areas





**Royal Netherlands  
Meteorological Institute**  
*Ministry of Transport, Public Works  
and Water Management*

You can search your vessels, as well as all other VOS vessels, by clicking: Subscriptions\my services\VOS Vessels.

To go to your countries fleet, fill out the “VOS country” input box.

(here UK fleet is chosen)





## VOS Vessels

Set as Default  Show VOS Vessels only  View side modules

[All](#) [Page](#) [Info](#)

1 | 2 | 3 | 4 :

Filter  Preserve

| Modification Date | Name            | Imo     | Callsign | Nationality                      | Assistance Required | Vos Country         |
|-------------------|-----------------|---------|----------|----------------------------------|---------------------|---------------------|
|                   |                 |         |          |                                  |                     | United Kingdom      |
|                   | Abadi           | 9210828 | V8V2002  | Brunel Darussalam                | No                  | United Kingdom      |
|                   | Aberdeen        | 9125738 | C60L4    | Bahamas                          | No                  | United Kingdom      |
|                   | Ada             | 8714114 | V7UA6    | Marshall Islands                 | No                  | United Kingdom      |
| 2008-08-26 14:11  | Adventure       | 8817655 | V7FT5    | Marshall Islands                 | Yes                 | United Kingdom A.r. |
|                   | Al Ghuwairiya   | 9372743 | V7PU9    | Marshall Islands                 | No                  | United Kingdom      |
|                   | Al Mareekh      | 8211461 | HZGN     | Saudi Arabia                     | No                  | United Kingdom      |
|                   | Al Moshtaree    | 8211459 | HZGH     | Saudi Arabia                     | No                  | United Kingdom      |
|                   | Al Zohal 1      | 8520501 | HZDD     | Saudi Arabia                     | No                  | United Kingdom      |
|                   | Alliance        | 8833752 | DRMX     | Germany                          | No                  | United Kingdom      |
|                   | Amadore         | 8520824 | 9HA2008  | Malta                            | No                  | United Kingdom      |
|                   | Amazonas        | 9706789 | VQKZ8    | United Kingdom                   | No                  | United Kingdom      |
| 2010-02-25 15:15  | Apl Agate       | 9139713 | WDE8265  | United States Of America         | Yes                 | United Kingdom A.r. |
|                   | Apl Iolite      | 9144756 | S6JT     | Republic Of Singapore            | No                  | United Kingdom      |
|                   | Apl Iris        | 9144758 | S6JU     | Republic Of Singapore            | No                  | United Kingdom      |
|                   | Apl Jade        | 9081203 | 9VVD     | Singapore                        | No                  | United Kingdom      |
| 2008-08-26 14:13  | Apl Orchid      | 8207898 | S6EX     | Republic Of Singapore            | Yes                 | United Kingdom A.r. |
|                   | Apl Sardonyx    | 9077458 | 9VWU     | Singapore                        | No                  | United Kingdom      |
|                   | Aqua Pearl      | 7909865 | C6HU6    | Bahamas                          | No                  | United Kingdom      |
|                   | Arcadia         | 9226906 | ZCDN2    | Bermuda                          | No                  | United Kingdom      |
|                   | Artemis         | 8201480 | ZCDM7    | Bermuda                          | No                  | United Kingdom      |
|                   | Atlantic Osprey | 8602414 | VSQ04    | United Kingdom                   | No                  | United Kingdom      |
|                   | Auk Arrow       | 8309387 | C6KB2    | Bahamas                          | No                  | United Kingdom      |
|                   | Azura           | 9424883 | ZCUB5    | United Kingdom                   | No                  | United Kingdom      |
| 2010-05-15 11:27  | Baltic Mariner  | 7710903 | ELWJ5    | Liberia                          | Yes                 | United Kingdom A.r. |
|                   | Baltimore       | 9313917 | OZCX2    | Denmark                          | No                  | United Kingdom      |
|                   | Barbel Arrow    | 8324373 | C6GF8    | Bahamas                          | No                  | United Kingdom      |
|                   | Beaumont        | 9313967 | OXVA2    | Denmark                          | No                  | United Kingdom      |
|                   | Bentonville     | 9313929 | OZCZ2    | Denmark                          | No                  | United Kingdom      |
|                   | Berge Atlantic  | 9164184 | LAIP5    | Norwegian International Register | No                  | United Kingdom      |
|                   | Bergen Arrow    | 8130291 | C6KB3    | Bahamas                          | No                  | United Kingdom      |
| 2008-08-26 10:55  | Bet Scouter     | 9050010 | MSYG9    | Isle Of Man                      | Yes                 | United Kingdom A.r. |

Displaying 1 to 100 of 344 records (Filtered from 1414 records)



**Royal Netherlands  
Meteorological Institute**  
*Ministry of Transport, Public Works  
and Water Management*

Go to “tools and links” and “International visit report” to download this document.

Save this document to your local hard disk to fill her out.



# Ship2Report

BY ROYAL DIRKZWAGER



## VOS Vessels

All Page Info

- Maritime Links
- Nautical Links 30
- Ships of Interest
- Tools 30
- Send email to 30

Set as Default  Show VOS Vessels only  View side modules

1 | 2 | 3 | 4 :

Filter  Preserve

| Modification Date | Name            | Imo     |                            | Nationality                      | Assistance Required | Vos Country         |
|-------------------|-----------------|---------|----------------------------|----------------------------------|---------------------|---------------------|
|                   |                 |         | International visit rep... | Brunei Darussalam                | No                  | United Kingdom      |
|                   | Aberdeen        | 9125736 | C60L4                      | Bahamas                          | No                  | United Kingdom      |
|                   | Ada             | 8714114 | V7UA6                      | Marshall Islands                 | No                  | United Kingdom      |
| 2008-08-26 14:11  | Adventure       | 8817655 | V7FT5                      | Marshall Islands                 | Yes                 | United Kingdom A.r. |
|                   | Al Ghuwairiya   | 9372743 | V7PU9                      | Marshall Islands                 | No                  | United Kingdom      |
|                   | Al Mareekh      | 8211461 | HZGN                       | Saudi Arabia                     | No                  | United Kingdom      |
|                   | Al Mosharee     | 8211459 | HZGH                       | Saudi Arabia                     | No                  | United Kingdom      |
|                   | Al Zohal 1      | 8520501 | HZDD                       | Saudi Arabia                     | No                  | United Kingdom      |
|                   | Alliance        | 8833752 | DRMX                       | Germany                          | No                  | United Kingdom      |
|                   | Amadore         | 8520824 | 9HA2009                    | Malta                            | No                  | United Kingdom      |
|                   | Amazonas        | 8706789 | VQKZ6                      | United Kingdom                   | No                  | United Kingdom      |
| 2010-02-25 15:15  | Apl Agate       | 9139713 | WDE8265                    | United States Of America         | Yes                 | United Kingdom A.r. |
|                   | Apl Iolite      | 9144756 | S6JT                       | Republic Of Singapore            | No                  | United Kingdom      |
|                   | Apl Iris        | 9144768 | S6JU                       | Republic Of Singapore            | No                  | United Kingdom      |
|                   | Apl Jade        | 9081203 | 9VVD                       | Singapore                        | No                  | United Kingdom      |
| 2008-08-26 14:13  | Apl Orchid      | 8207898 | S6EX                       | Republic Of Singapore            | Yes                 | United Kingdom A.r. |
|                   | Apl Sardonyx    | 9077458 | 9VWJ                       | Singapore                        | No                  | United Kingdom      |
|                   | Aqua Pearl      | 7909865 | C6HU6                      | Bahamas                          | No                  | United Kingdom      |
|                   | Arcadia         | 9226906 | ZCDN2                      | Bermuda                          | No                  | United Kingdom      |
|                   | Artemis         | 8201480 | ZCDM7                      | Bermuda                          | No                  | United Kingdom      |
|                   | Atlantic Osprey | 8602414 | VSQ4                       | United Kingdom                   | No                  | United Kingdom      |
|                   | Auk Arrow       | 8309397 | C6KB2                      | Bahamas                          | No                  | United Kingdom      |
|                   | Azura           | 9424883 | 2CUB5                      | United Kingdom                   | No                  | United Kingdom      |
| 2010-05-15 11:27  | Baltic Manner   | 7710903 | ELWJ5                      | Liberia                          | Yes                 | United Kingdom A.r. |
|                   | Baltimore       | 9313917 | OZCX2                      | Denmark                          | No                  | United Kingdom      |
|                   | Barbet Arrow    | 8324373 | C6GF6                      | Bahamas                          | No                  | United Kingdom      |
|                   | Beaumont        | 9313967 | OXVA2                      | Denmark                          | No                  | United Kingdom      |
|                   | Bentonville     | 9313929 | OZCZ2                      | Denmark                          | No                  | United Kingdom      |
|                   | Bene Atlantic   | 9164184 | I AIP5                     | Norwegian International Register | No                  | United Kingdom      |



## SHIP OBSERVATIONS TEAM – VOS SCHEME

### REPORT OF INSPECTION TO FOREIGN VOS

(Please complete instructions and email the report to the VOS Focal Point by the Country of Origin)

VOS/001

| SHIP DETAILS *             |  | * Required            |
|----------------------------|--|-----------------------|
| Name of Ship               |  |                       |
| Call Sign                  |  |                       |
| IMO Number                 |  |                       |
| Ship's email address       |  |                       |
| Shipping Route             |  |                       |
| VOS Country of Recruitment |  | (Refer to WMO No. 47) |

| INSPECTION DETAILS *    |  | * Required        |
|-------------------------|--|-------------------|
| Inspecting PMO          |  | (Name & Location) |
| Date of inspection      |  | (yyyy-mm-dd)      |
| Country & Port of visit |  |                   |
| Reason for the visit    |  |                   |

| VOS PERFORMANCE                |  |
|--------------------------------|--|
| Recent GTS reporting history   |  |
| Quality of the observations    |  |
| Frequency of obs. from logbook |  |

| INSTRUMENTS OR STATIONERY ISSUED OR RECOVERED                              |  |
|--|--|
| Full details of instruments recovered (make / model / serial no. / reason) |  |
| Full details of instruments issued (make / model / serial no.)             |  |
| Details of any stationery issued   |  |
| Details of paper logbooks recovered (mail to the responsible VOS FP)       | Period of the observations recovered: (yyyy-mm-dd-hh)          |
|  | First obs. <input type="text"/> Last obs. <input type="text"/> |
| Downloaded electronic logbook data (email to the responsible VOS FP)       | Period of the observations recovered: (yyyy-mm-dd-hh)          |
|  | First obs. <input type="text"/> Last obs. <input type="text"/> |

|                                  |  |
|----------------------------------|--|
| General Comments & Other Actions |  |
|----------------------------------|--|

| DETAILS OF INSTRUMENTS ON ARRIVAL |                                    |  |
|-----------------------------------|------------------------------------|--|
| Barometer                         | Make / Model / Type                |  |
|                                   | Serial No.                         |  |
|                                   | Default setting – SLP or MSLP      | (Station Level [SLP] or Mean Sea Level [MSLP])         |
|                                   | Condition of the instrument        |  |
| Barograph                         | Make / Model / Type                |  |
|                                   | Serial No.                         |  |
|                                   | Default setting – SLP or MSLP      | (Station Level [SLP] or Mean Sea Level [MSLP])         |
|                                   | Condition of the instrument        |  |
| Screen                            | Attribute                          | Port Starboard   |
|                                   | Condition of the screen(s)         |  |
|                                   | Condition of the thermometers      |  |
|                                   | Condition of the muslin/veid       |  |
|                                   | Electronic logbook software        | Type <input type="text"/> Version <input type="text"/> |
| Equipment Condition               | AWS or TurboWin laptop             |  |
|                                   | Sea water bucket                   |  |
|                                   | Sea thermometer                    |  |
|                                   | Whirling psychrometer/thermometers |  |
|                                   | Anemometer                         |  |

| BAROMETER COMPARISON |                  | (Enter the corrected pressure on both barometers as read by same ship) |                    |                               |                                   |                    |
|----------------------|------------------|--|--------------------|-------------------------------|-----------------------------------|--------------------|
| TEST                 | SHIP'S BAROMETER |  |                    | PMO INSPECTION BAROMETER      |                                   |                    |
|                      | Pressure as read | Corrections Temp + Drift + Height                                      | Corrected Pressure | Pressure as read              | Corrections Temp + Drift + Height | Corrected Pressure |
|                      | (a)              | (b)  | (a) + (b)          | (c)                           | (f)                               | (c) + (f)          |
| 1                    |                  |  |                    |                               |                                   |                    |
| 2                    |                  |  |                    |                               |                                   |                    |
| 3                    |                  |  |                    |                               |                                   |                    |
|                      |                  | Mean (d)   |                    |                               | Mean (g)                          |                    |
|                      |                  | Error (m)  |                    | = Mean (d) – Mean (g)         |                                   |                    |
|                      |                  | Correction (n)   |                    | Reverse the sign of Error (m) |                                   |                    |

| Special instructions for Precision Aneroid Barometers used by AU, HK, NZ & UK |   |  |
|---|---|--|
| AU  | New drift correction (p)  | = Drifting drift correction + Correction (q) |
|   | If the value of (p) is equal to or exceeds ± 0.3 (hPa), after the drift correction is added to the new value of (p), the error (q) or (p) equal to or exceeds ± 0.3 (hPa), after the drift correction is added to the new value of (p) and alert the NWS. |  |
| HK, NZ, UK  | Do not alter the correction table. If the error exceeds ± 0.3 (hPa) of the reference pressure then alert the NWS.   |  |





**Royal Netherlands  
Meteorological Institute**  
*Ministry of Transport, Public Works  
and Water Management*

To search for a particular vessel (not only VOS!) click on the Subscription\Vessel Search\New Search tab in the menu bar.

A input box will open and you can search by:

Name  
Call sign  
Nationality  
IMO number  
MMSI number.

Click “Search” button.



## Vessel Search

Set as Default

|                     |                          |
|---------------------|--------------------------|
| Vessels by Movement | >>                       |
| Vessels on Map      | >>                       |
| Vessel Search       | >> New Search            |
| ISPS Services       | >> Current Search Result |
| My Services         | >>                       |

This database contains the latest details on over 199500 vessels.  
This database was updated 13-10-2010 10:21.

**Vessel search will return a maximum of 200 vessels.**  
**Please use the search criteria accordingly.**

You are allowed to use the characters \* (asterisk) for multiple  
and ? (question mark) as single character wildcard in every search field.

|             |  |
|-------------|--|
| Name        | <input type="text" value="LOMBARDIA"/>                                     |
| Callsign    | <input type="text"/>   |
| Nationality | <input type="text"/>   |
| IMO Nr.     | <input type="text"/>   |
| MMSI Nr.    | <input type="text"/>   |
|             | <input type="button" value="Search"/> <input type="button" value="Clear"/> |





## Vessel Search Result

Set as Default
  Show VOS Vessels only
  Full Screen

[All](#)
[Page](#)
[New Vessel Search](#)

Filter
  Preserve

| Name      | Imo nr. | Callsign | MMSI nr.  | Nationality | Shiptype     | In Range |
|-----------|---------|----------|-----------|-------------|--------------|----------|
| Lombardia | 9309514 | 9HWT7    | 215823000 | Malta       | Bulk Carrier | Yes      |

## Rotterdam

Enlarge



## Lombardia

Enlarge

|                  |              |
|------------------|--------------|
| Imo Nr.          | 9309514      |
| Callsign         | 9HWT7        |
| Nationality      | Malta        |
| Port Of Registry | Valletta     |
| Shiptype         | Bulk Carrier |
| Length Over All  | 188.35       |
| Breadth          | 27.72        |
| Max Draught      | 11.3         |
| Gross Tonnage    | 24960        |
| Net Tonnage      | 12313        |
| Dead Weight      | 35200        |



Displaying 1 to 1 of 1 records (Filtered from 2 records)



**Royal Netherlands  
Meteorological Institute**  
*Ministry of Transport, Public Works  
and Water Management*

Now a few examples of harbour regions follow that will show the world wide AIS information available.

More regions/harbours will follow in the future.

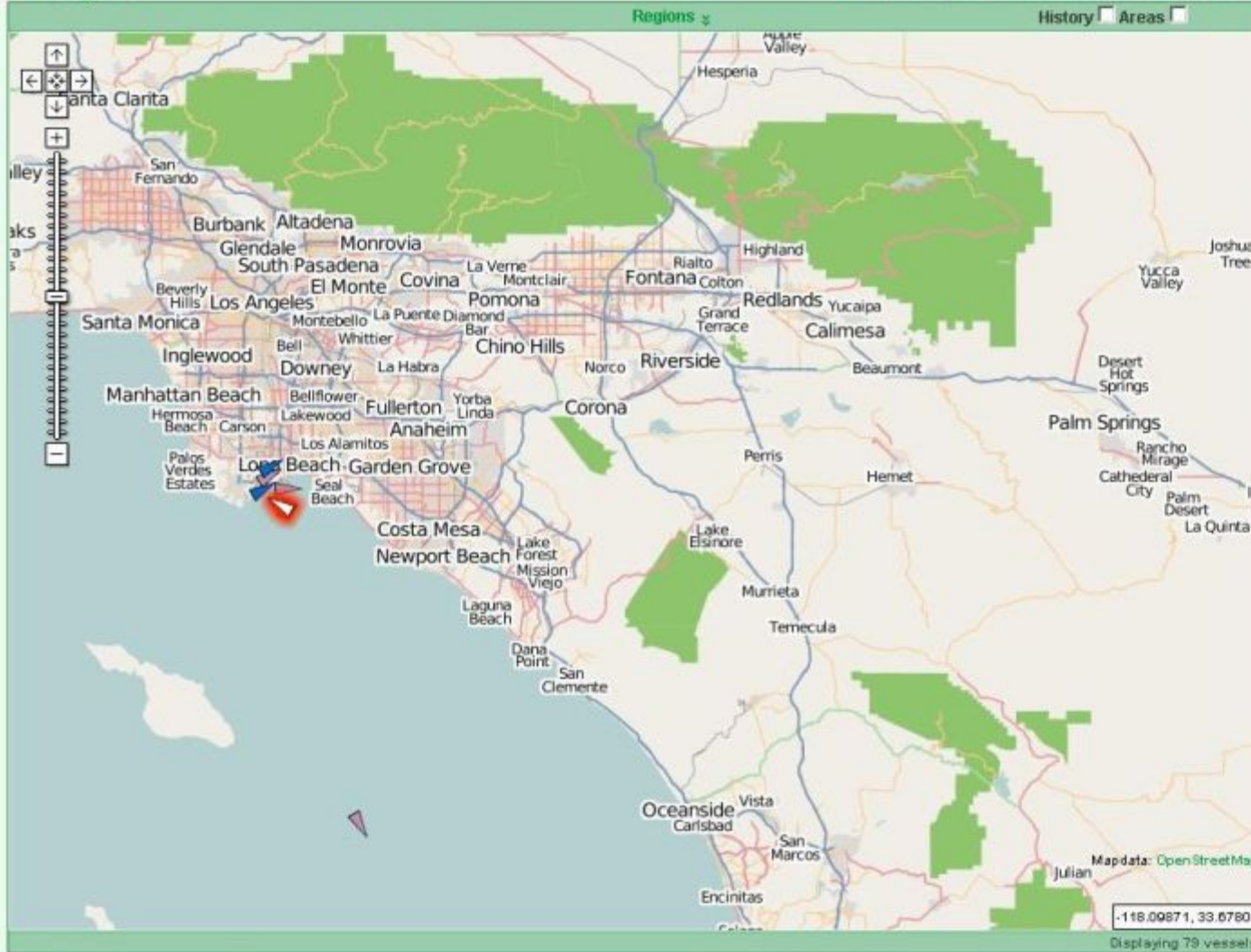




## Los Angeles

Set as Default
  Show VOS Vessels only
  Full Screen

## Vessels on Map



| Name                 | IMO Nr. |
|----------------------|---------|
| Cma Cgm Don Pasquale | 9318101 |
| Hanjin Yantian       | 9295218 |
| Kiel Express         | 8902539 |
| Milan Express        | 9112296 |
| Mvbirch Arrow        | 9336830 |
| Santa Celina         | 9210086 |

Displaying 1 to 6 of 8 records (Filtered from 79 records)

## Milan Express

|                  |                              |
|------------------|------------------------------|
| Imo Nr.          | 9112296                      |
| Callsign         | ZCDH7                        |
| Nationality      | Bermuda                      |
| Port Of Registry | Hamilton                     |
| Shiptype         | Fully Cellular Containership |
| Length Over All  | 216.21                       |
| Breadth          | 32.24                        |
| Max Draught      | 10.8                         |
| Gross Tonnage    | 33662                        |
| Net Tonnage      | 14735                        |
| Dead Weight      | 33659                        |



-118.09871, 33.67803

Displaying 79 vessels

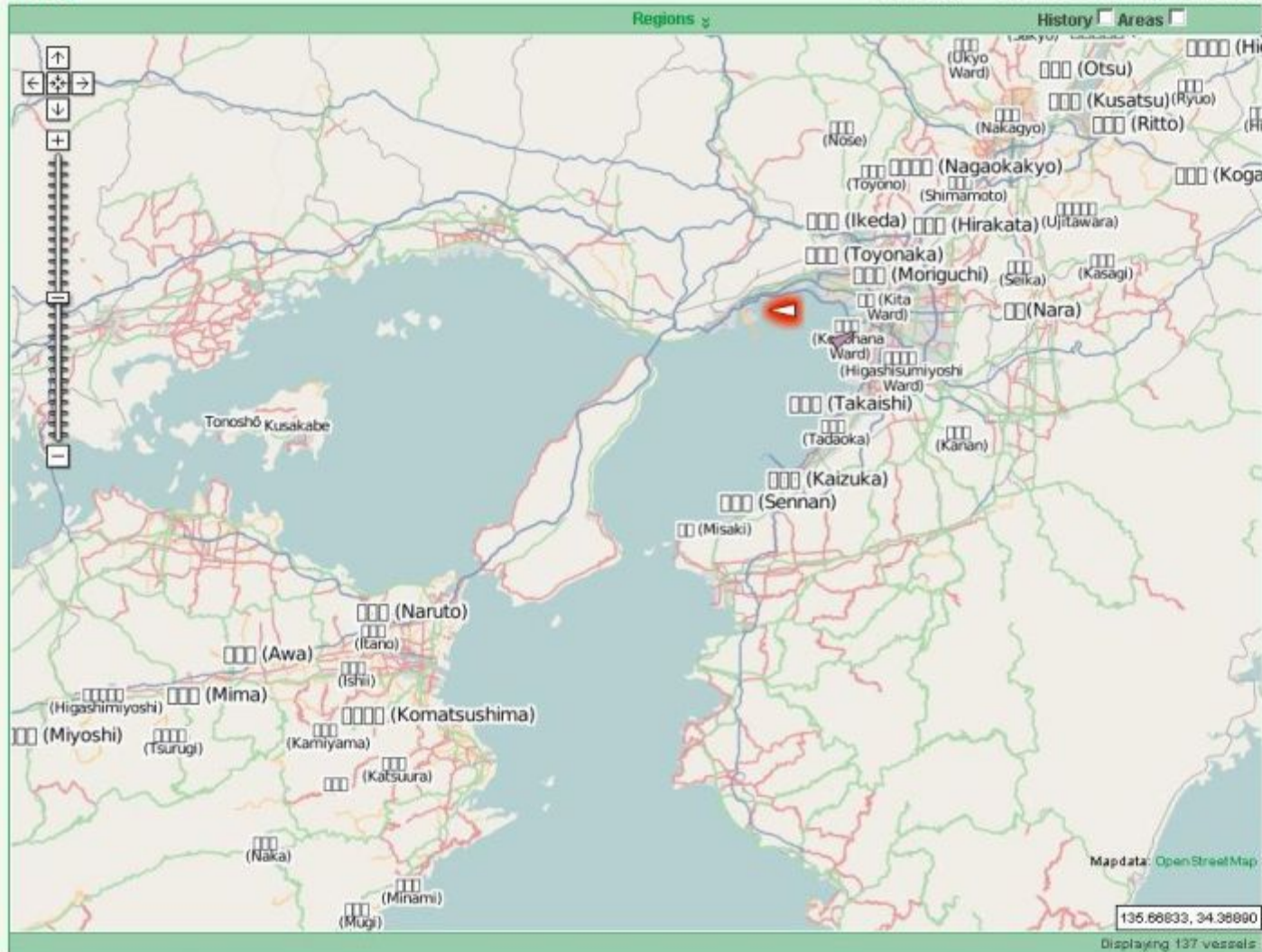


## Osaka

Set as Default  Show VOS Vessels only  Full Screen

## Vessels on Map

Enlarge



| Name                 | IMO Nr. |
|----------------------|---------|
| Ludwigshafen Express | 8902577 |
| San Amerigo          | 9344693 |

Displaying 1 to 2 of 2 records (Filtered from 137 records)

### Ludwigshafen Express

Enlarge

|                  |                |
|------------------|----------------|
| Imo Nr.          | 8902577        |
| Callsign         | DILE           |
| Nationality      | Germany        |
| Port Of Registry | Hamburg        |
| Shiptype         | Container Ship |
| Length Over All  | 293.9          |
| Breadth          | 32.3           |
| Max Draught      | 13.5           |
| Gross Tonnage    | 53833          |
| Net Tonnage      | 23499          |
| Dead Weight      | 65815          |



Mapdata: OpenStreetMap

135.66833, 34.38800

Displaying 137 vessels



Welcome - Since **01-01-10** Royal Dirkzwager Reported **26528** vessels in the Port of Rotterdam.

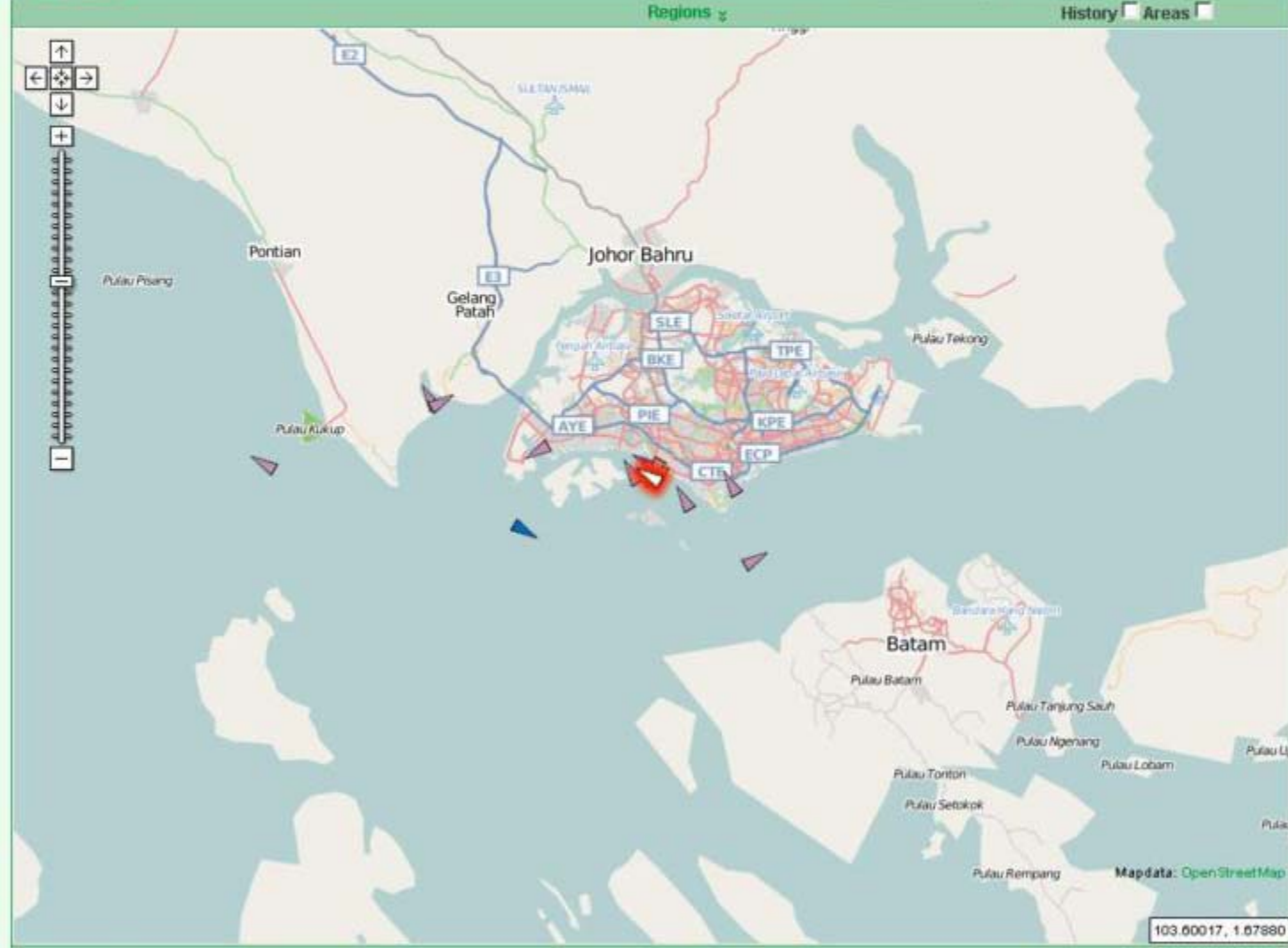


### Singapore

Set as Default  Show VOS Vessels only  Full Screen

### Vessels on Map

Enlarge



| Name              | IMO Nr. |
|-------------------|---------|
| Sci Kolkata       | 9169495 |
| Santa Virginia    | 9238741 |
| Safmarine Cunene  | 9239886 |
| Nedlloyd Mercator | 9189495 |
| Msc Roma          | 9304447 |
| Mol Dream         | 9220328 |

Displaying 1 to 14 of 14 records (Filtered from 409 records)

Filter ▾

### Msc Roma

Enlarge

|                  |                              |
|------------------|------------------------------|
| Imo Nr.          | 9304447                      |
| Callsign         | A8KX4                        |
| Nationality      | Liberia                      |
| Port Of Registry | Monrovia                     |
| Shiptype         | Fully Cellular Containership |
| Length Over All  | 336.7                        |
| Breadth          | 45.6                         |
| Max Draught      | 15                           |
| Gross Tonnage    | 107849                       |
| Net Tonnage      | 57577                        |
| Dead Weight      | 110634                       |



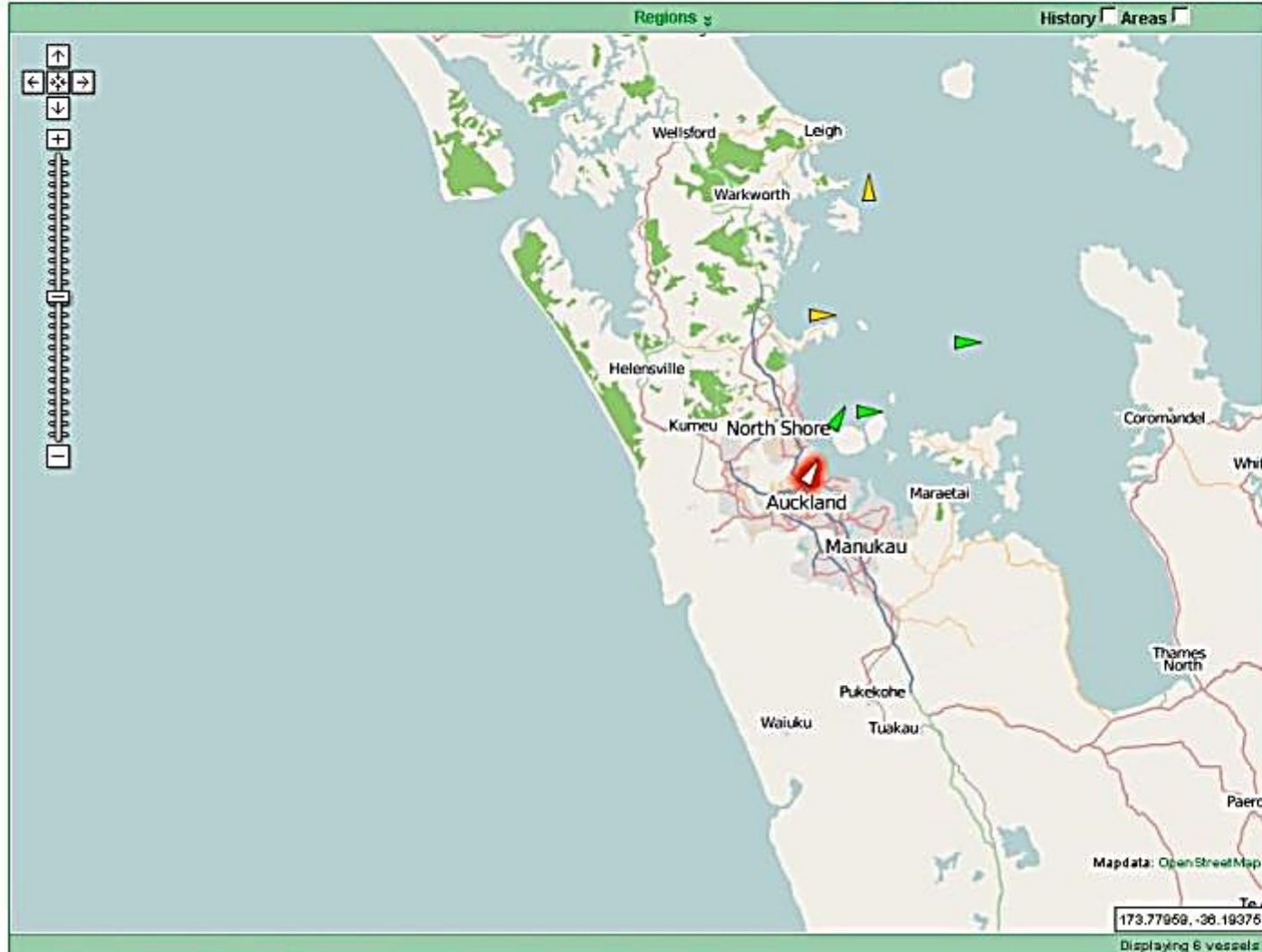


## Auckland

Set as Default  Show VOS Vessels only  Full Screen

## Vessels on Map

Enlarge



Filter


| Name                 | IMO Nr. |
|----------------------|---------|
| Awanua               | 9458042 |
| Nz Warship Canterbur | 9338644 |
| Scheldegracht        | 9202510 |
| Seamount Explorer    | 8614211 |
| Warship Manawanui    | 7803322 |
| Warship Wellington   | 9368481 |

Displaying 1 to 6 of 6 records

## Scheldegracht

Enlarge

|                  |               |
|------------------|---------------|
| Imo Nr.          | 9202510       |
| Callsign         | PFAQ          |
| Nationality      | Netherlands   |
| Port Of Registry | -             |
| Shiptype         | General Cargo |
| Length Over All  | 168           |
| Breadth          | 25.2          |
| Max Draught      | 9.85          |
| Gross Tonnage    | 16639         |
| Net Tonnage      | 6730          |
| Dead Weight      | 21250         |





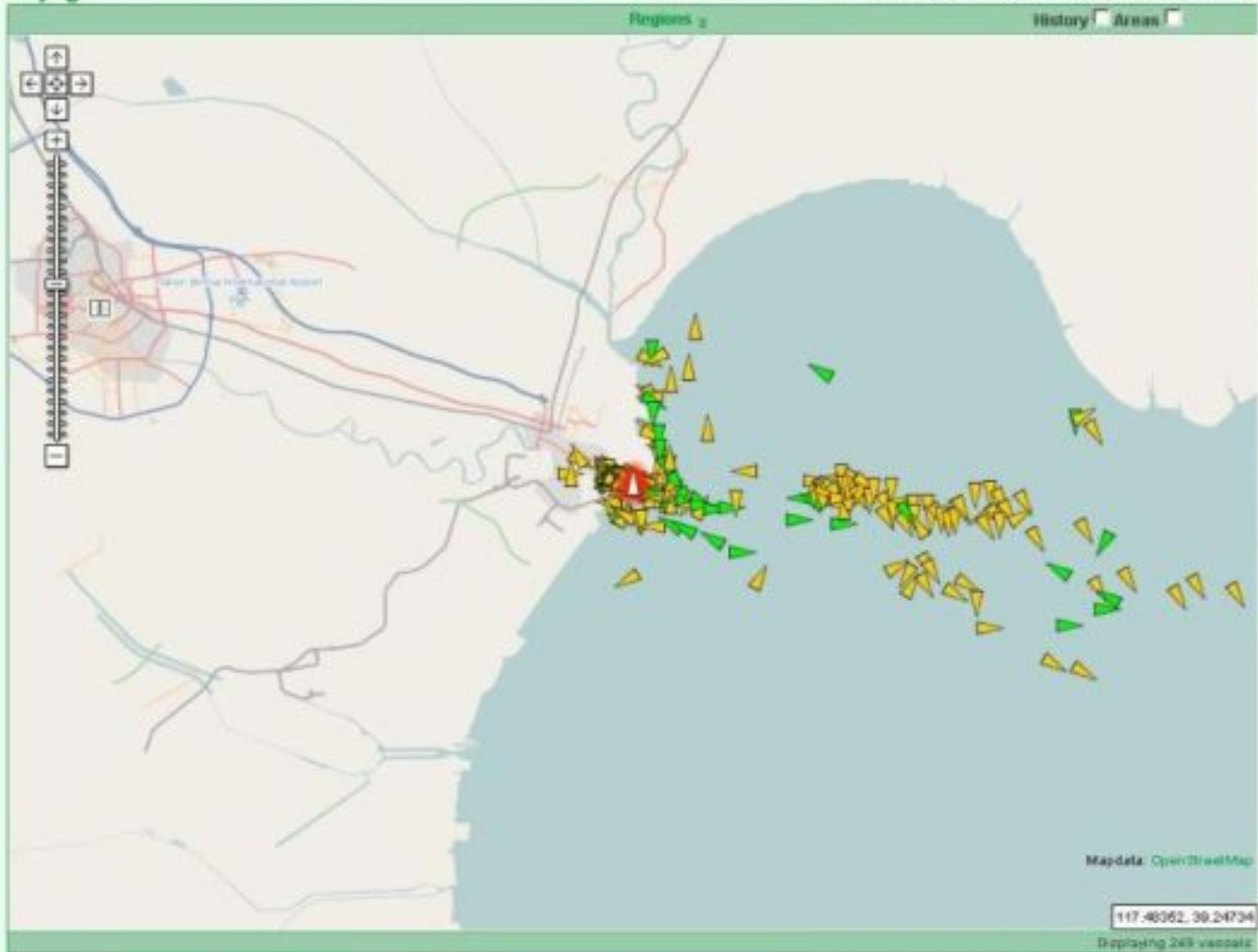


## Beijing

Set as Default
  Show VOS Vessels only
  Full Screen

## Vessels on Map

Enlarge



| Vessel Name             | IMO            | Filter |
|-------------------------|----------------|--------|
| Fing Xiang 1            | 0              |        |
| Qing Yun He             | 9214513        |        |
| Richard A Phil          | 9173680        |        |
| <b>Rickmers Hamburg</b> | <b>9238818</b> |        |
| Rong Xiang 8            | 0              |        |
| Runhai241               | 0              |        |
| Satzgitter              | 8508917        |        |
| Sea Rich                | 8411827        |        |

Displaying 10 up to 200 of 249 records

## Rickmers Hamburg

Enlarge

|                  |                  |
|------------------|------------------|
| IMO Nr.          | 9238818          |
| Callsign         | V7DS3            |
| Nationality      | Marshall Islands |
| Port Of Registry | Majuro           |
| Shiptype         | General Cargo    |
| Length Over All  | 192              |
| Breadth          | 27.8             |
| Max Draught      | 11.2             |
| Gross Tonnage    | 23119            |
| Net Tonnage      | 9752             |
| Dead Weight      | 29980            |





**Royal Netherlands  
Meteorological Institute**  
*Ministry of Transport, Public Works  
and Water Management*

A special feature in S2R is the possibility to add a message to a VOS vessel.

You can choose to add an International Assistance Required (A.R.) message to any VOS vessel.

These (A.R.) vessels appear in a grey colour on the AIS map.

In the next picture such a vessel is positioned on the bottom of the map.

Right click on the vessel and Choose “ Vos vessels” and next “ Edit VOS info”.



Welcome . Since 01-01-10 Royal Dirkzwager Reported 26341 vessels in the Port of Rotterdam.

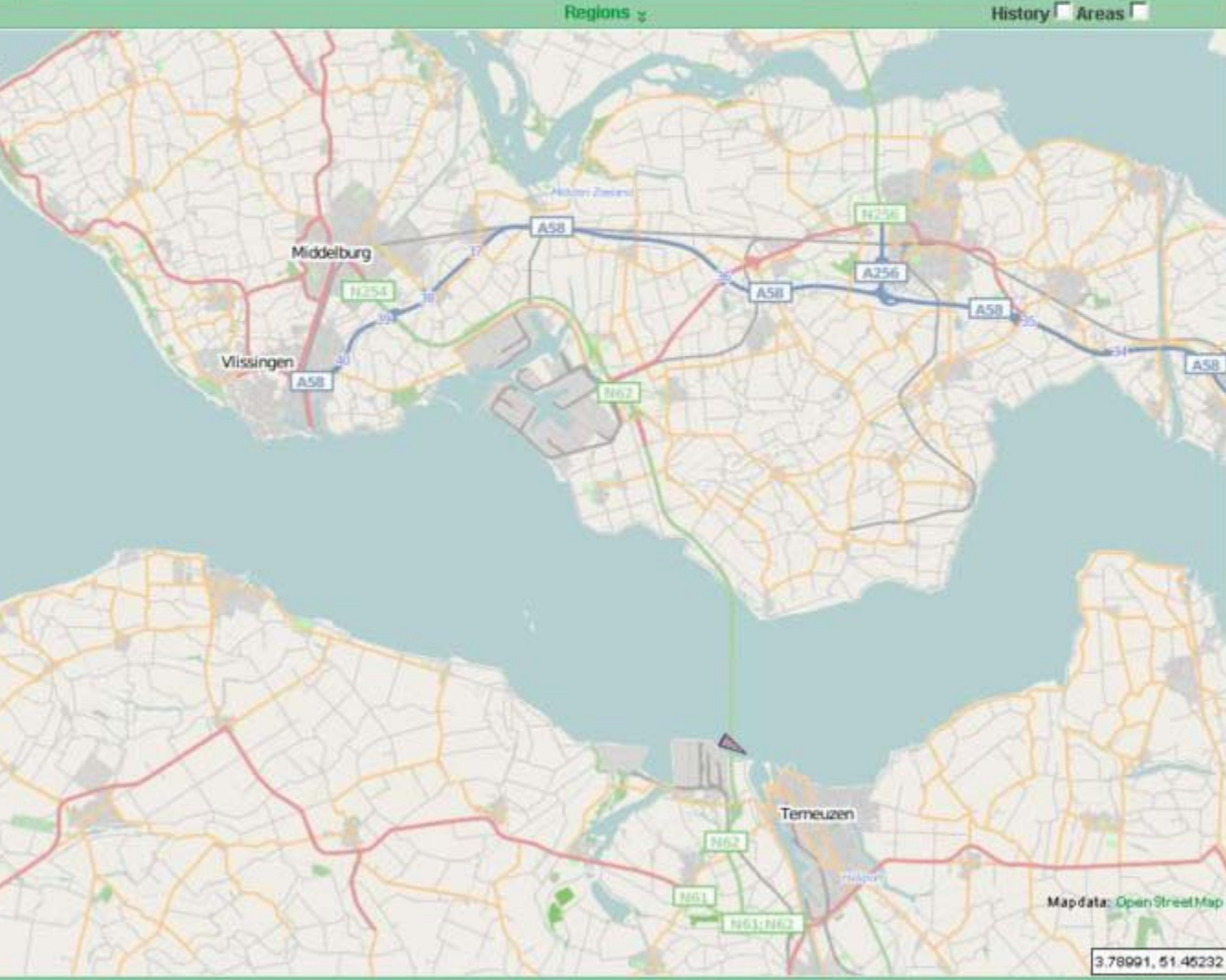


Scheldemond

Set as Default  Show VOS Vessels only  Full Screen

Vessels on Map

Enlarge Filter



| Name            | IMO Nr. |
|-----------------|---------|
| Federal Mattawa | 9315537 |

Displaying 1 to 1 of 1 records (Filtered from 184 records)

Item Details

Enlarge

No item selected.  
Please select an item in either the map or list.

Mapdata: OpenStreetMap

3.78991, 51.45232

Displaying 184 vessels



Welcome - Since 01-01-10 Royal Dirkzwager Reported 26341 vessels in the Port of Rotterdam.

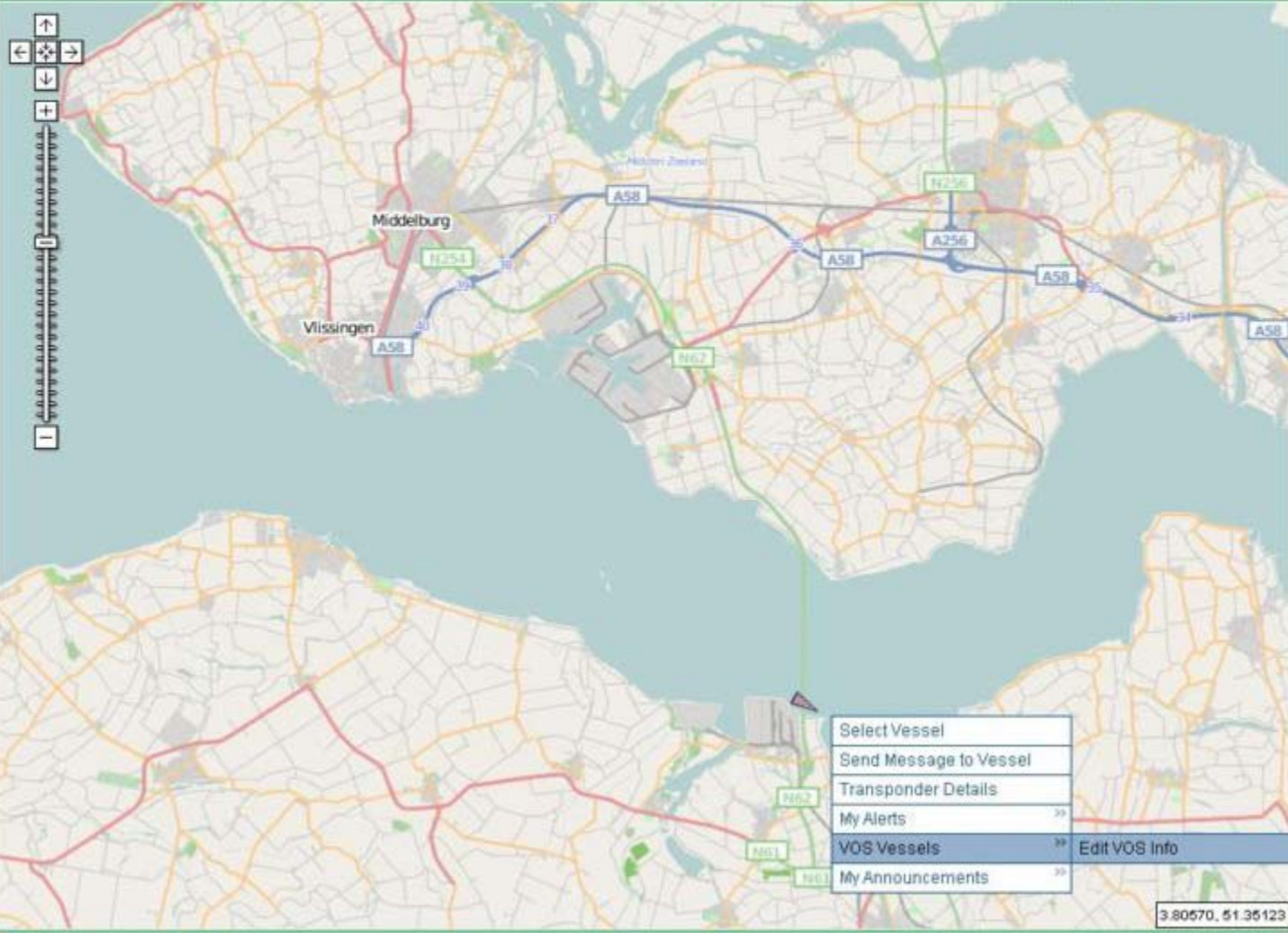


Scheldemond

Set as Default  Show VOS Vessels only  Full Screen

Vessels on Map

Enlarge Filter



| Name            | IMO Nr. |
|-----------------|---------|
| Federal Mattawa | 9315537 |

Displaying 1 to 1 of 1 records (Filtered from 184 records)

Item Details

Enlarge

No item selected.  
Please select an item in either the map or list.

- Select Vessel
- Send Message to Vessel
- Transponder Details
- My Alerts
- VOS Vessels » **Edit VOS Info**
- My Announcements »

3.80570, 51.36123

Displaying 184 vessels





### Edit VOS Vessel

Set as Default  Show VOS Vessels only  Full Screen

### Vessels on Map

Enlarge Filter

| Name   | IMO Nr. |
|--|---------|
| No records found.<br>Please remove any filtering or try a different list.<br>Please check if the 'Show My Vessels only' is turned off. |         |
| <small>Displaying no records (Filtered from 3 records)</small>   |         |

**IMO** 9315537  
**Shipname** Federal Mattawa  
**Callsign** A8kk5  
**Inmarsat Number** 764443360 , 463790590  
**E-mail** N/A  
**VOS Country**

Assistance required   
 Modification date/time : 2010-07-02 10:43

**Reason for assistance**

**Action required**

**Requested by**

### Item Details

Enlarge

No item selected.  
Please select an item in either the map or list.



**Royal Netherlands  
Meteorological Institute**  
*Ministry of Transport, Public Works  
and Water Management*

To add a vessel to your fleet, you have to search the Database in “Subscription\Vessel search”.

Once the vessel is displayed, right click on it, click on : “Vos vessel\Add”.

The vessel will be added to your fleet.  
(based on log-in code)

The same path to remove a vessel from your fleet.

Change the country code in A.R. modus.





**Royal Netherlands  
Meteorological Institute**  
*Ministry of Transport, Public Works  
and Water Management*

Another option Dirkszwoager offers is to track any vessel by satellite.

This mode is offered for a certain number of vessels. The subscription is not based on the name of the vessel but on the number of vessels.

The price depends on the number of vessels chosen.

An option is to choose a number of vessels and make the option available to all, but to restrict the national use of this feature by a certain amount.



**Royal Netherlands  
Meteorological Institute**  
*Ministry of Transport, Public Works  
and Water Management*

This presentation has the purpose to show you how we use the S2R application.

If you are interested or want to participate, please send an email to:

[pmo.office@knmi.nl](mailto:pmo.office@knmi.nl)

I am looking forward meeting all of you in Orlando USA.

BRGDS,  
Bert de Vries – PMO KNMI