

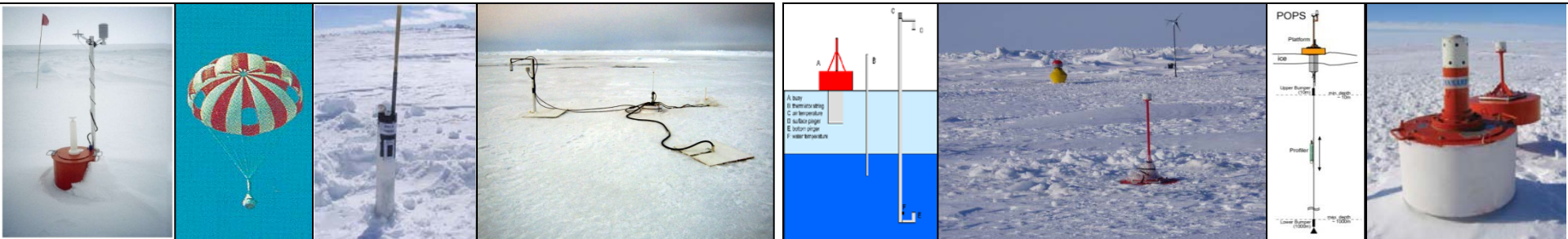


The International Programme for Antarctic Buoys



Report for DBCP-30 Weihai, China, 27-31 October 2014

Christian Haas, York University
haasc@yorku.ca



IPAB Executive Committee

- Chair: Petra Heil, Australia
- Vice-Chairman: Pablo Clemente-Colon, USA
- Member: Marcel Nicolaus, Germany
- Member: Cathleen Geiger, USA
- Member: Johan Stander, South Africa
- Coordinator: Christian Haas, Canada
- Co-coordinator: Ignatius Rigor, USA

IPAB activities 2013/14

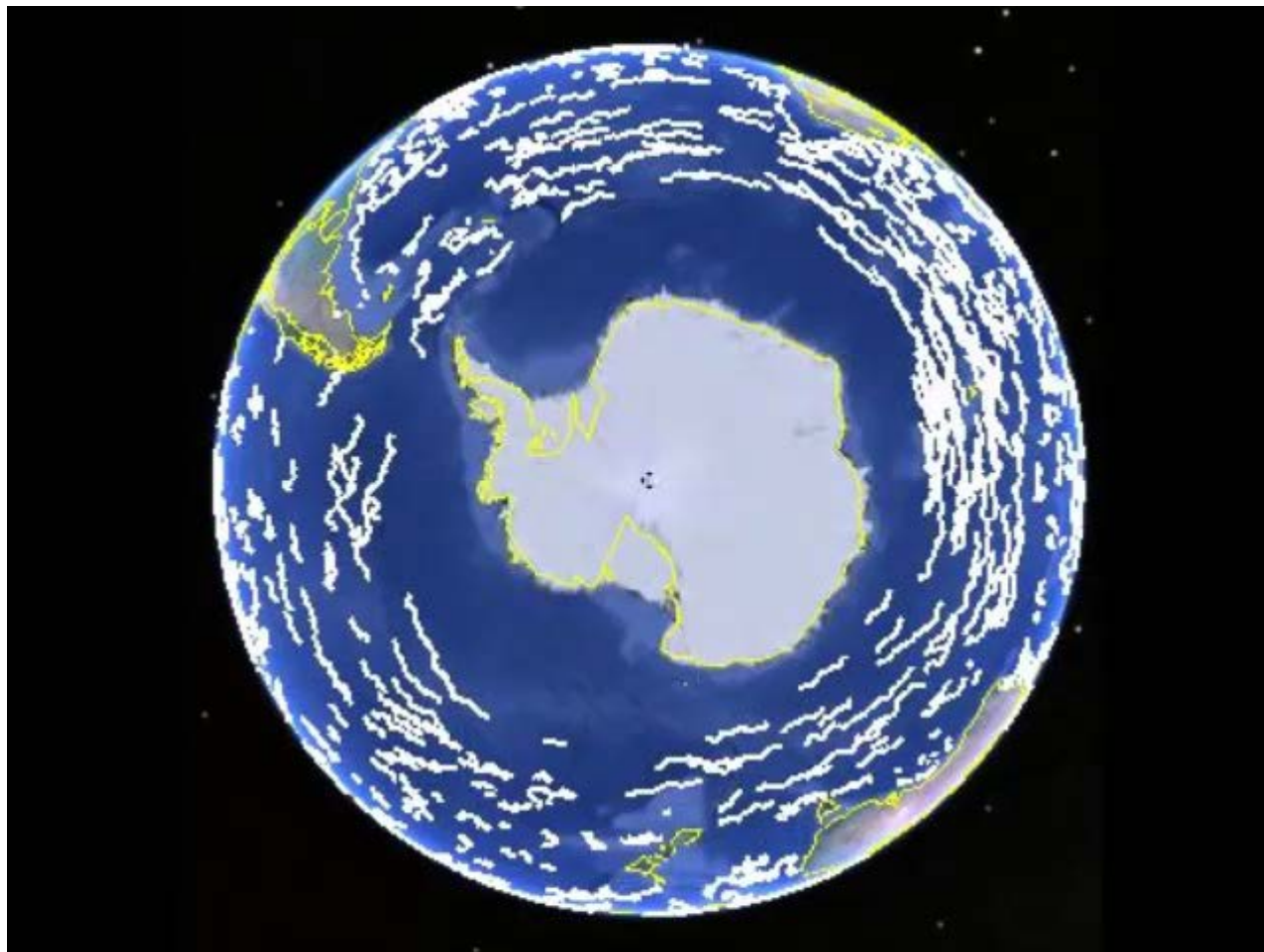
Overview

1. >50 buoys were deployed during AWI Polarstern cruises in Weddell Sea, June - Aug 2013 and Jan-Mar 2014. Buoys of various types (SVP, IMB, snow, AWS) contributed by AWI, Ant CRC, FMI, WHOI.
2. 10 SVPs were deployed by USIPAB during NPB cruise in Feb 2014, in Ross Sea sector between 140 and 150 W, 55 and 65 S

The Meteorological Services of South Africa, Australia, and New Zealand continue to operationally deploy numerous SVP's in the Southern Ocean, primarily north of the sea ice edge.

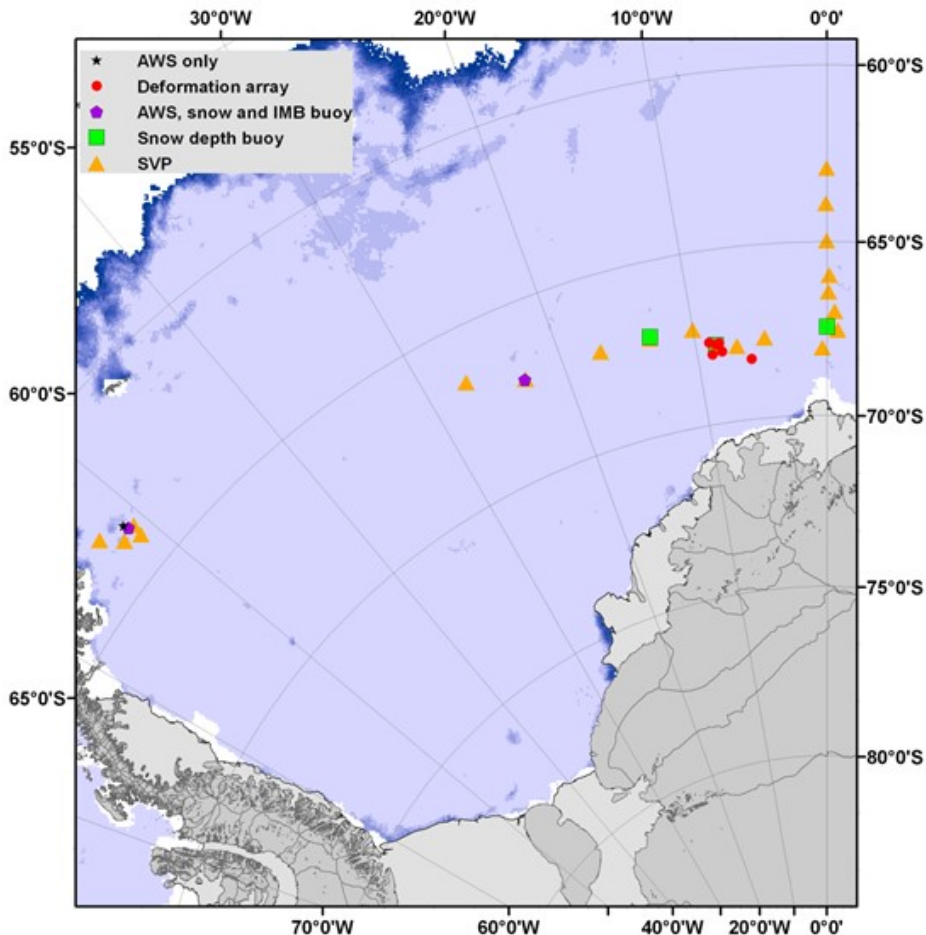
IPAB & Southern Ocean Ice Beacon tracks

July 2010 – June 2014



GTS data from ISDM/MEDS, Canada, courtesy of Mathieu Ouellet

Buoy deployments ANT-XXIX/6



SSMIS Sea ice concentration from 15.09.13 provided by Uni Bremen
Source: IBCSQ_v1_is_ADD 6.0
Stereographic Projection

ANT-XXIX/6

08.06.-12.08.13

Cape Town – Punta Arenas
Winter experiment

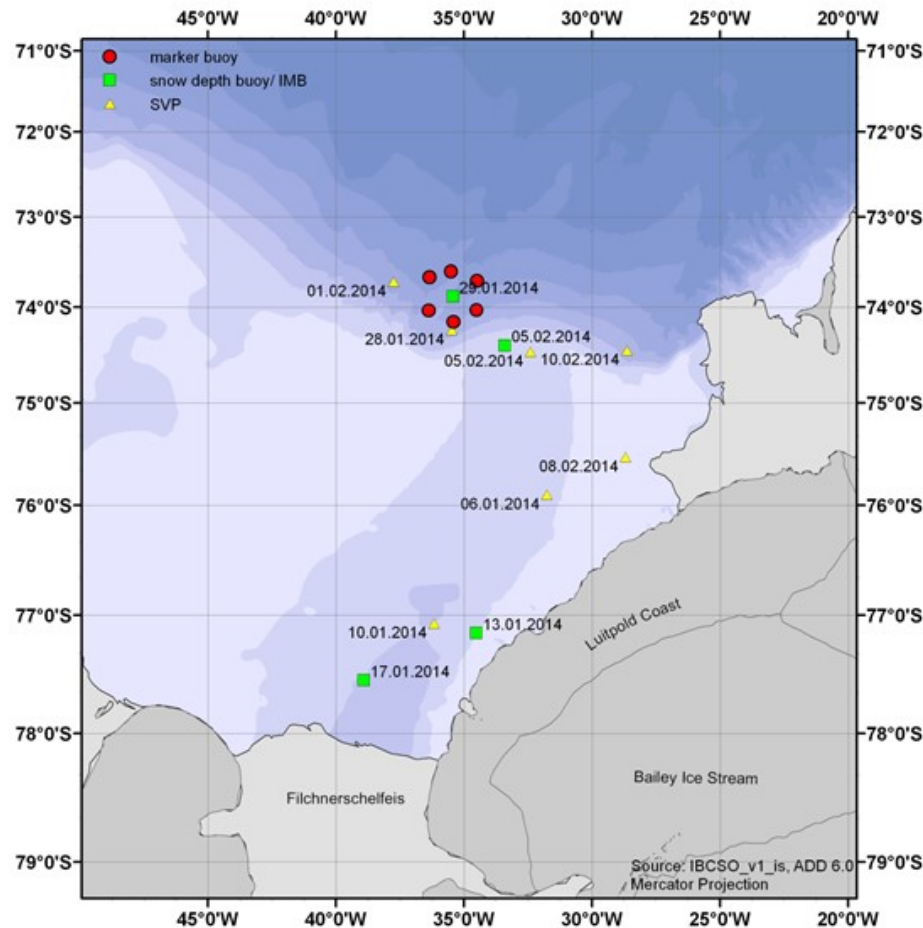
7 kinds of buoys deployed to measure

- Sea ice drift
- Sea ice thickness
- Snow depth
- Deformation
- Meteorological conditions

36 buoys deployed (in total)



Buoy deployments ANT-XXIX/9



ANT-XXIX/9

20.12.13.-05.03.14

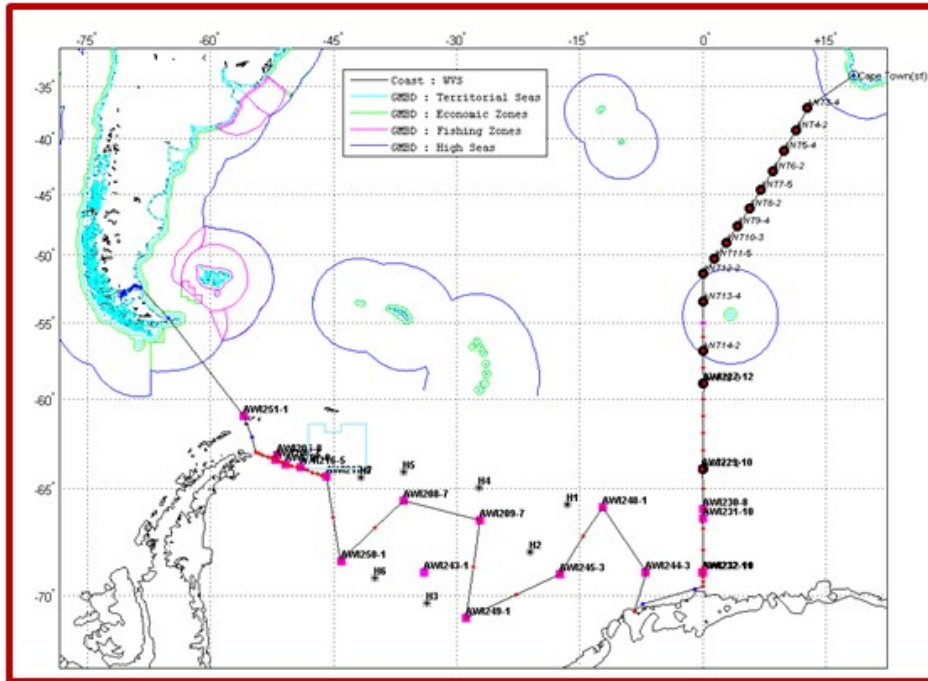
Cape Town – Cape Town
Summer expedition

7 kinds of buoys deployed
to measure

- Sea ice drift
- Sea ice thickness
- Snow depth
- Deformation
- Ocean currents
- Ocean CTD

23 buoys deployed (in
total)

Plans for 2014/15



Cape Town 1.12.2014 – Punta Arena 1.2.2015

• ANT XXX/3

- 6 Snow buoys (AWI)
- 6 Thermistor IMBs (FMI & AWI)
- 12 SVP (AWI)
- 2 Bio-Phys (AWI)
- Additions ?

- Planned buoy deployments by Alfred Wegener Institute (AWI) during Polarstern cruise Ant 30/3 in Dec 2014 / Jan 2015. Map provided by Marcel Nicolaus (AWI).