



Korea National Report

2010

DBCP-26

Sang Jin LYU

Marine Meteorology Division

Korea Meteorological Administration



KMA

Korea Meteorological Administration



국립해양조사원 KHOA

Korea Hydrographic and Oceanographic Administration

Organization

S

Cooperating

in Korea

KORDI



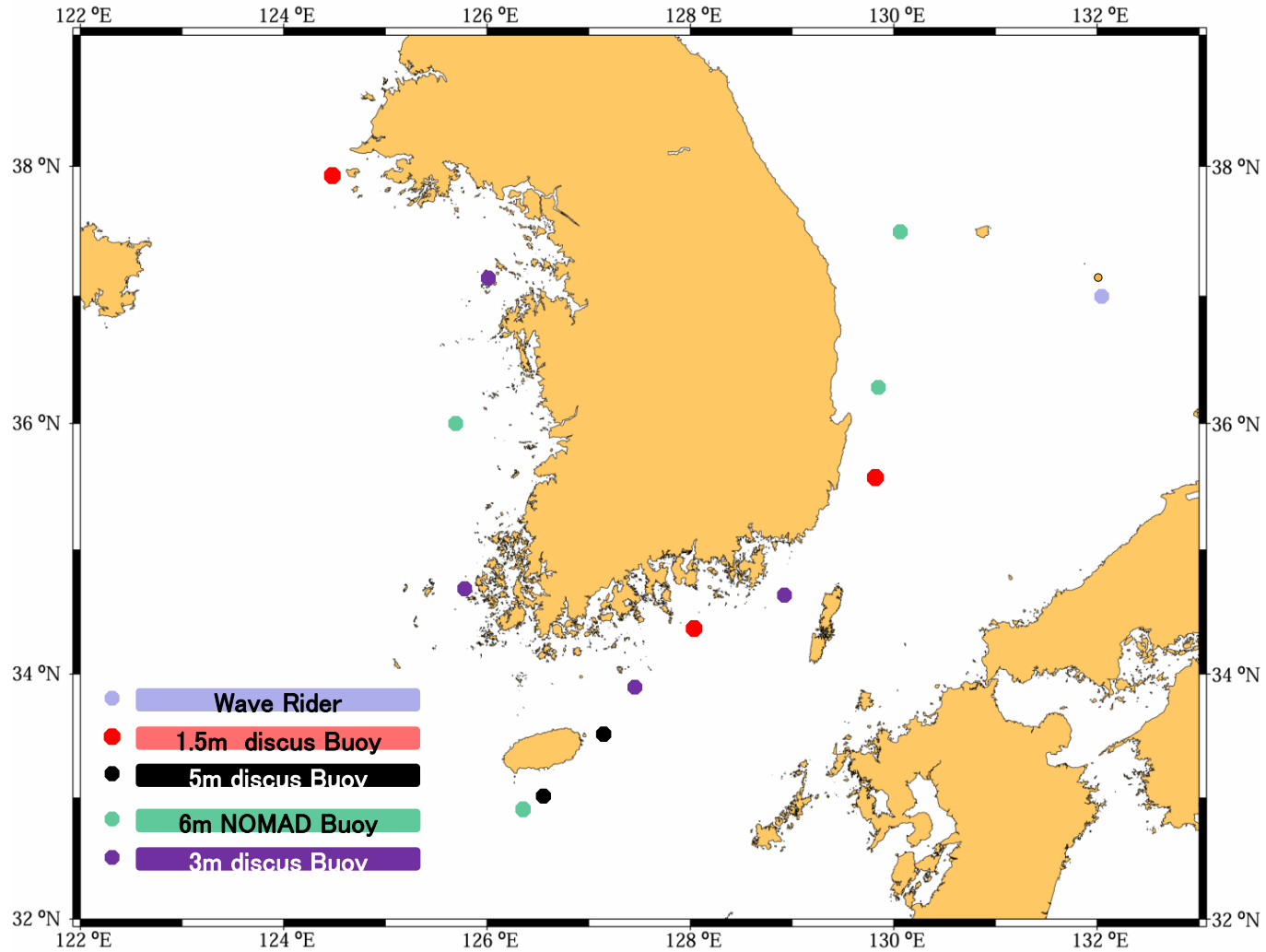
Buoy Distribution (as of August 2010)

	Yellow Sea	Southern Sea	East / Japan Sea	Total
Moored Buoy	3 (KMA) 1 (KHOA)	3 (KMA) 3 (KHOA)	3 (KMA) 1 (KHOA)	14
Drifter			11 (KHOA)	11(SVP)

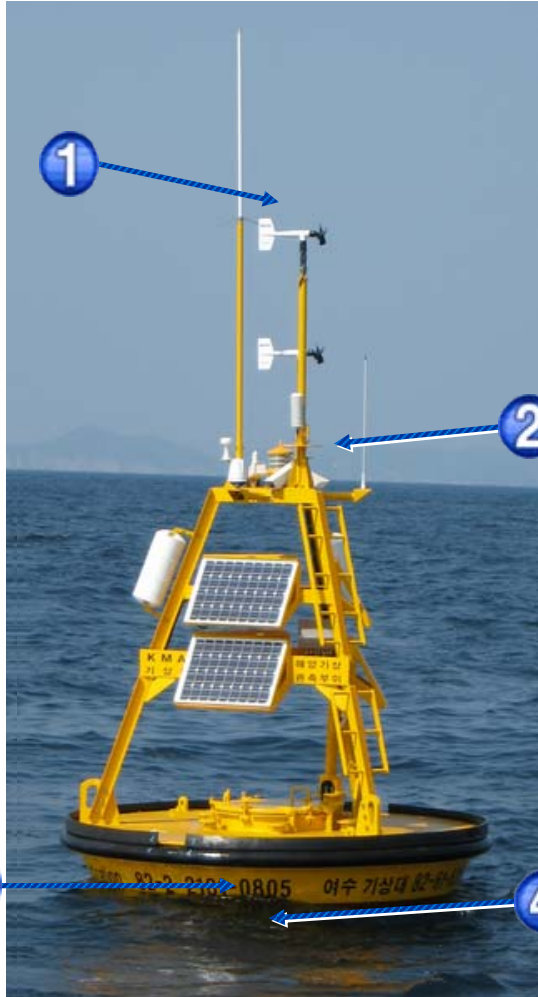
❖ **KMA: Korea Meteorological Administration**

❖ **KHOA: Korea Hydrographic and Oceanographic Administration**

Moored Buoy Distribution



3M Discus Buoy



Specification and Features

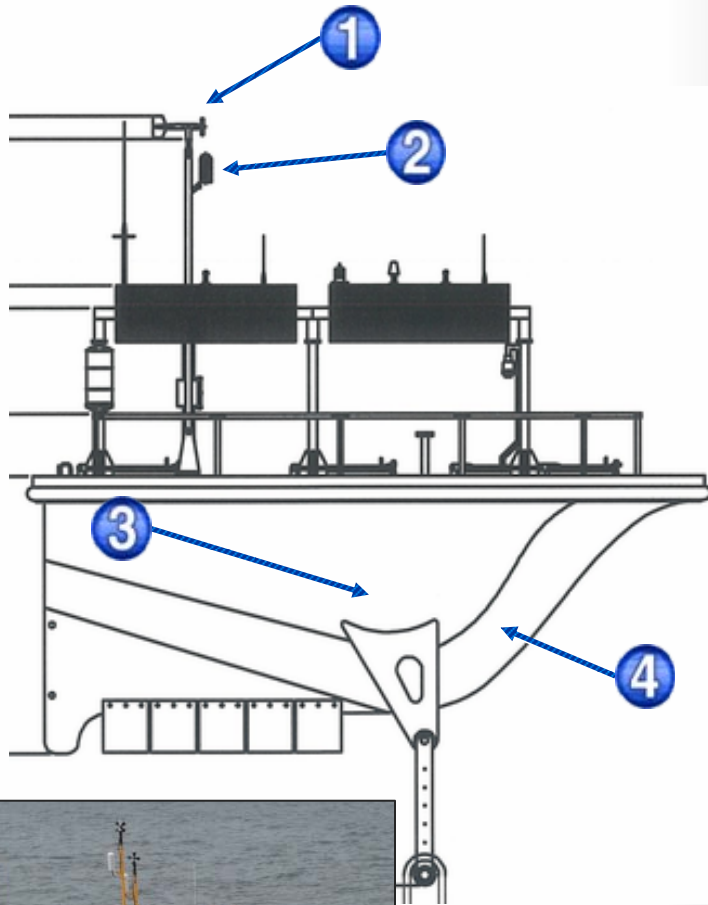
NO.	item	Observation range	Sensor
	Buoy Temp	-40 ~ 60 (C)	Zeno3200
	Buoy Heading	0 ~ 359 (Deg)	HS-8000
1	Wind Dir 1,2	0 ~ 359 (Deg)	RMY05160
1	Wind Speed 1,2	0.0 ~ 60.0 (m/s)	
1	Wind Gust 1,2	0.0 ~ 75.0 (m/s)	
2	Air Temp	-40.0 ~ 60.0 (C)	HMP45A
2	Air R/H	0.8 ~ 99 (%)	
3	Wave Dir	0~359 (Deg)	Hippy-40
3	Sig. Wave Height	0.0~99.9 (m)	
3	Wave Height(Max)	0.0~99.9 (m)	
3	Wave period	0.0~99.9 (Sec.)	
4	Water temperature 1,2	-2.0~38.0 (C)	YS144204



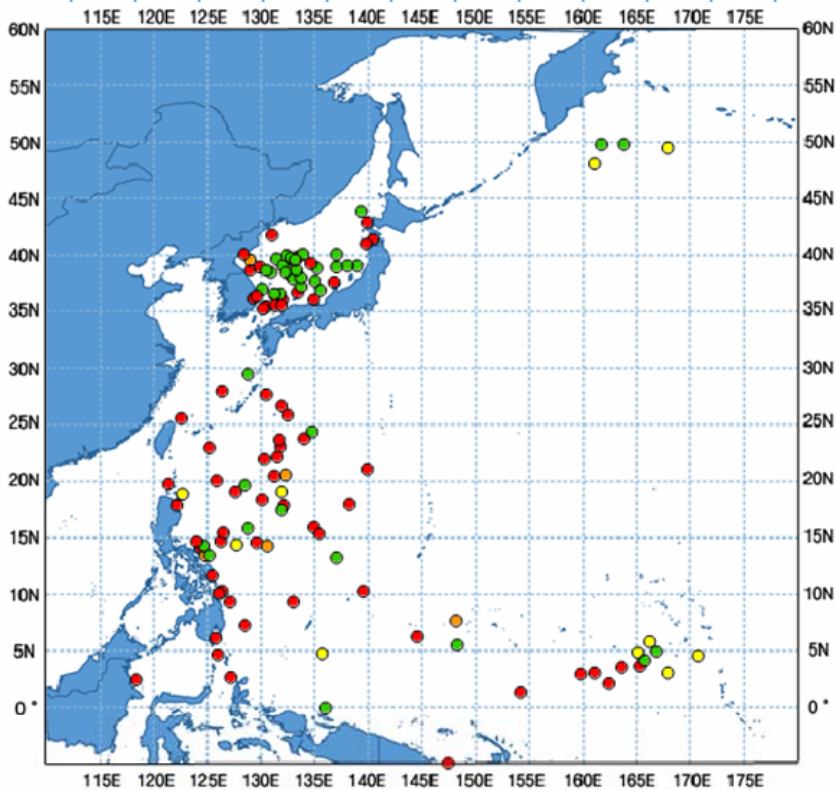
6M NOMAD Buoy

Specification and Features

NO.	item	Observation range	Sensor
	Buoy Temp	-40 ~ 60 (C)	Zeno3200
	Buoy Heading	0 ~ 359 (Deg)	HS-8000
1	Wind Dir 1,2	0 ~ 359 (Deg)	RMY05160
1	Wind Speed 1,2	0.0 ~ 60.0 (m/s)	
1	Wind Gust 1,2	0.0 ~ 75.0 (m/s)	
2	Air Temp	-40.0 ~ 60.0 (C)	HMP45A
2	Air R/H	0.8 ~ 99 (%)	
3	Wave Dir	0~359 (Deg)	Hippy-40
3	Sig. Wave Height	0.0~99.9 (m)	
3	Wave Height(Max)	0.0~99.9 (m)	
3	Wave period	0.0~99.9 (Sec.)	
4	Water temperature 1,2	-2.0~38.0 (C)	YS144204



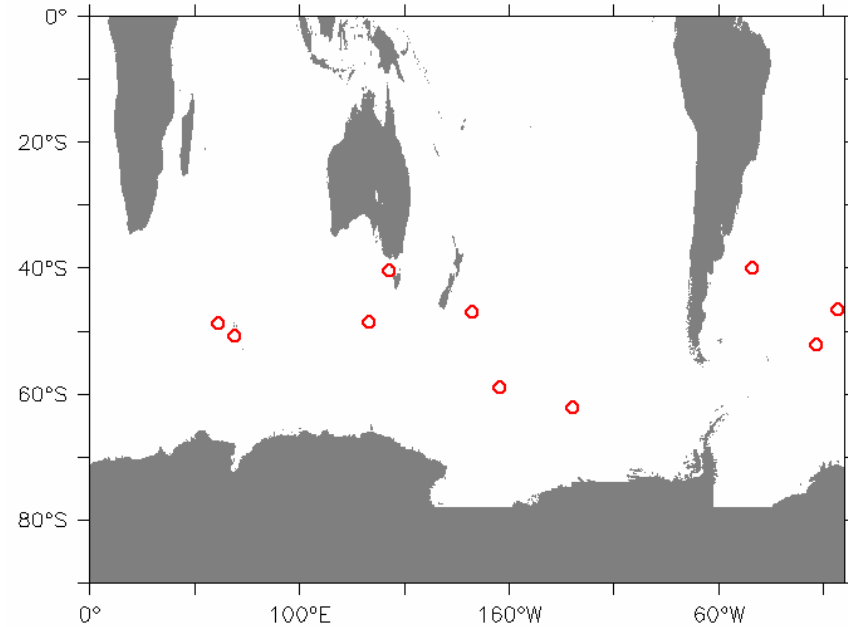
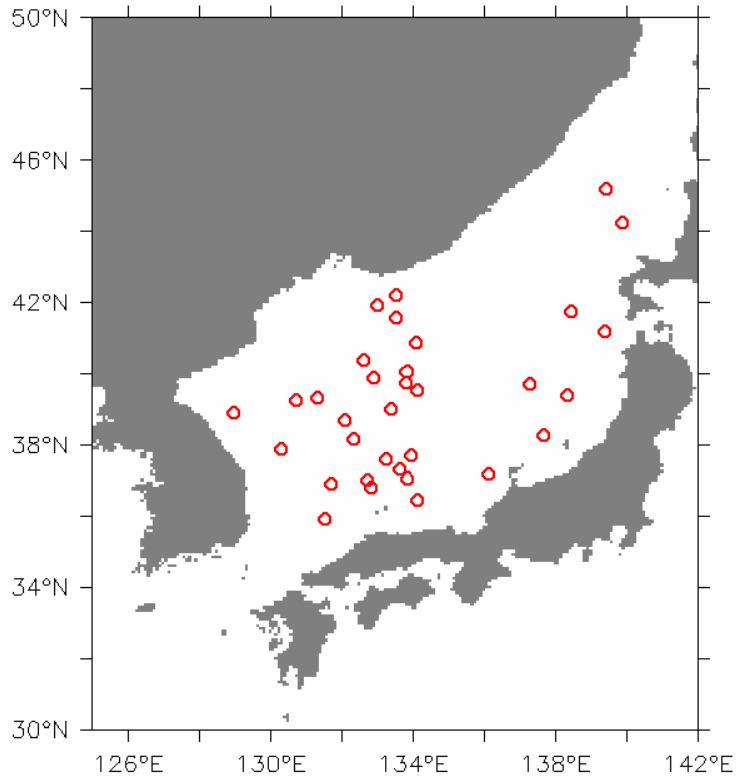
ARGO Float (KMA)



• *Green & yellow dots indicate active Argo floats*

ARGO	# of deployed floats	Operational as of 31 August 2010
East/Japan Sea	47	27
N.W. Pacific	77	28
Total	124	55

ARGO Float (KORDI)

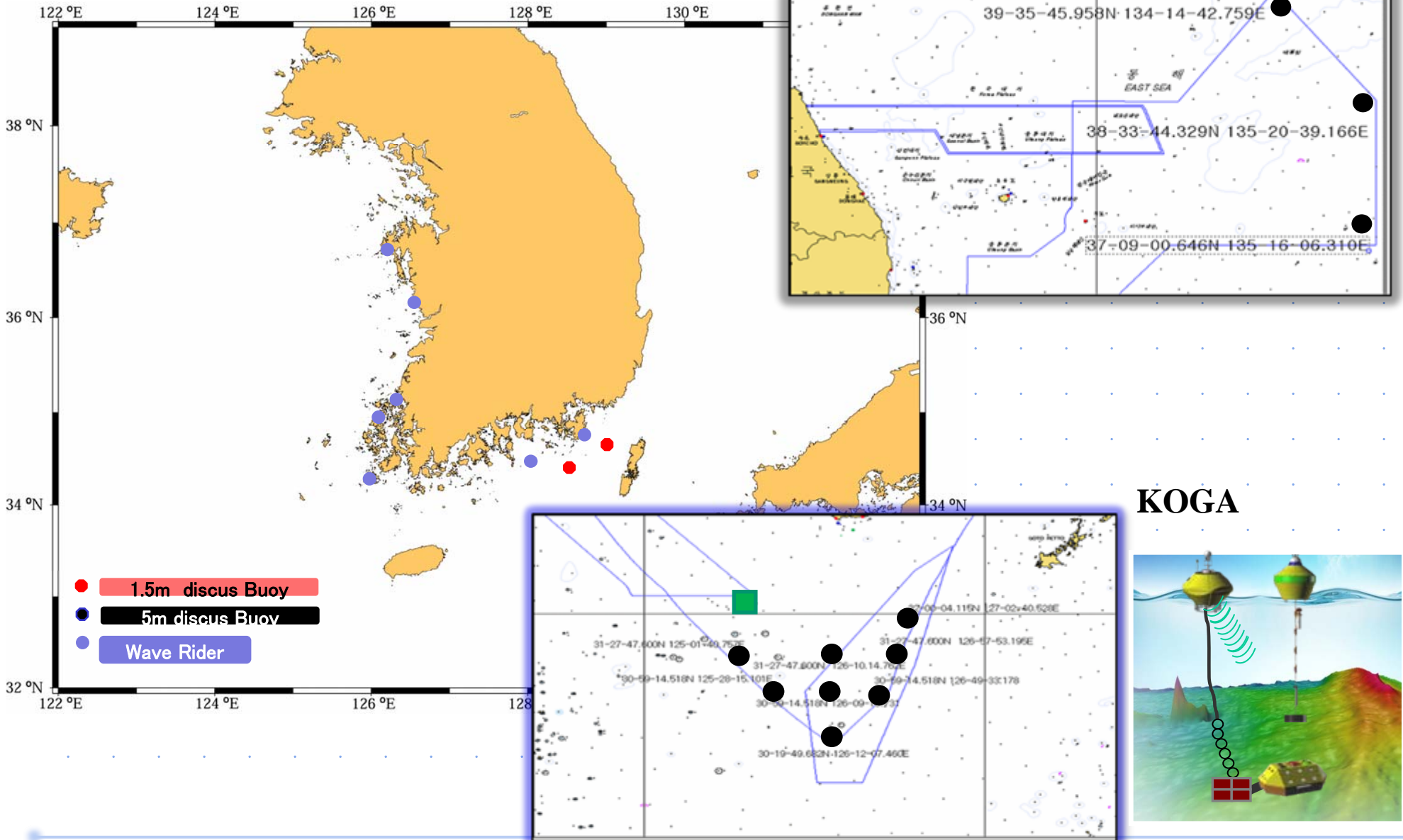


ARGO_KORDI	# of deployed floats	Operational as of 31 August 2010
East/Japan Sea	90	34
N.W. Pacific	1	0
Drake Passage & Southern Oceans	32	10
Total	123	44

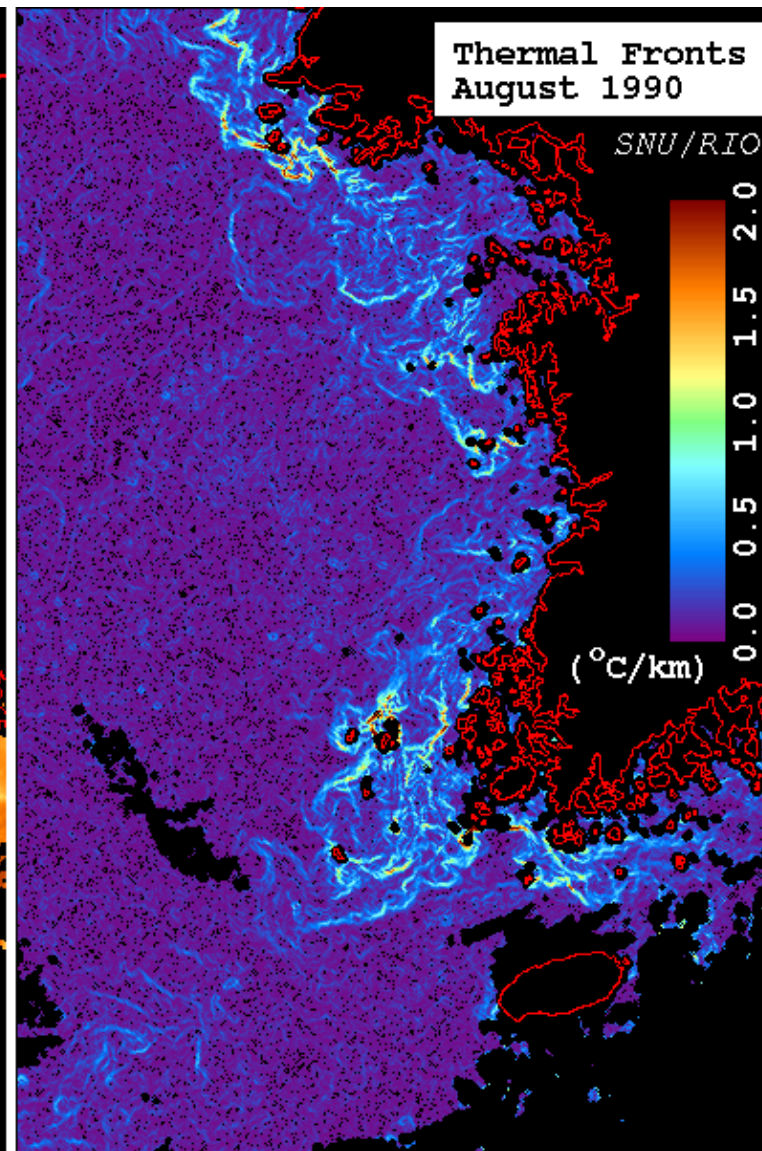
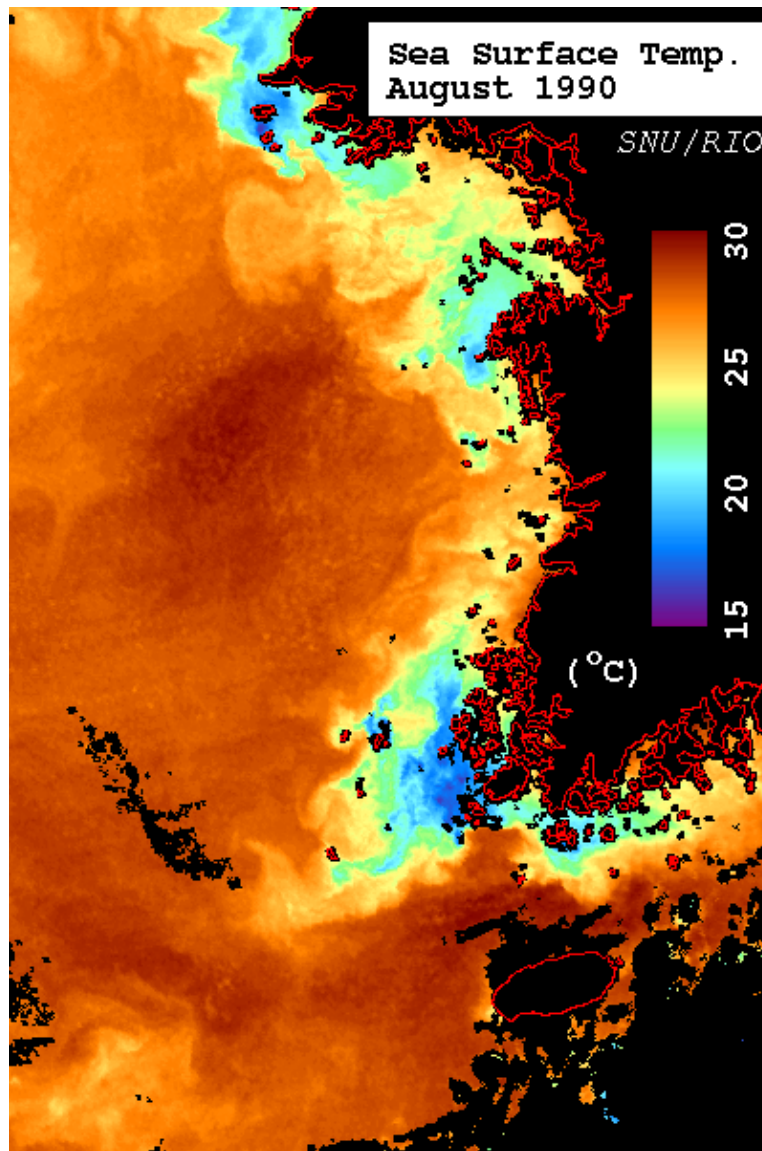
Plan : Moored Buoy Deployment until 2011

	Yellow Sea	Southern Sea	East /Japan Sea	Total
Moored Buoy	5 (KMA)	2 (KMA) 10 (KHOA)	1 (KMA) 3 (KHOA)	21
Drifter			19	19 (SVP)
ARGO Float			14	14

Moored Buoy Distribution (2011)



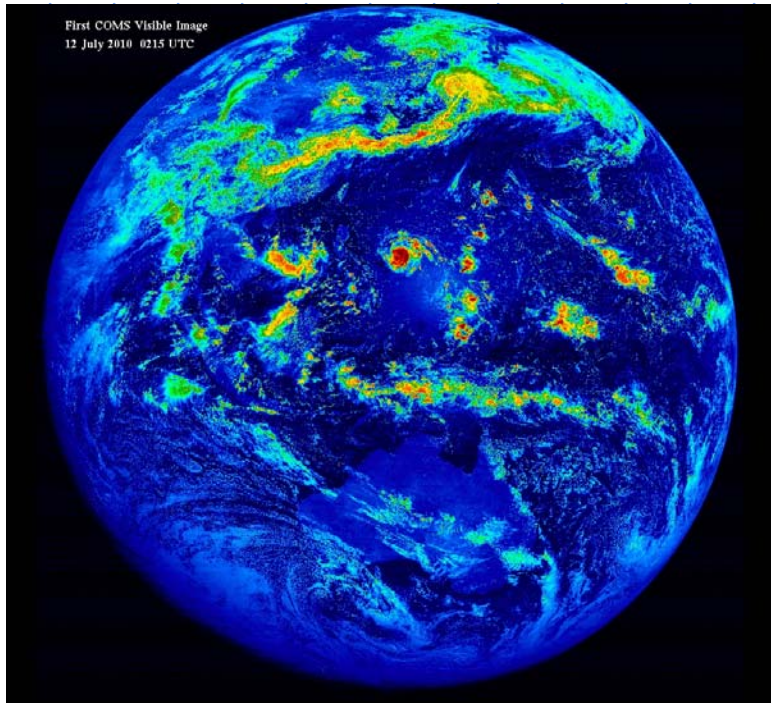
Issues : high resolution SST



Issues : high resolution SST

Satellite data

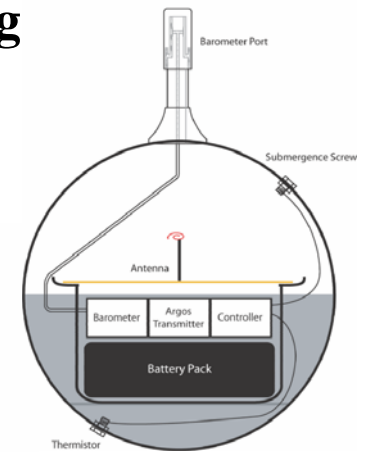
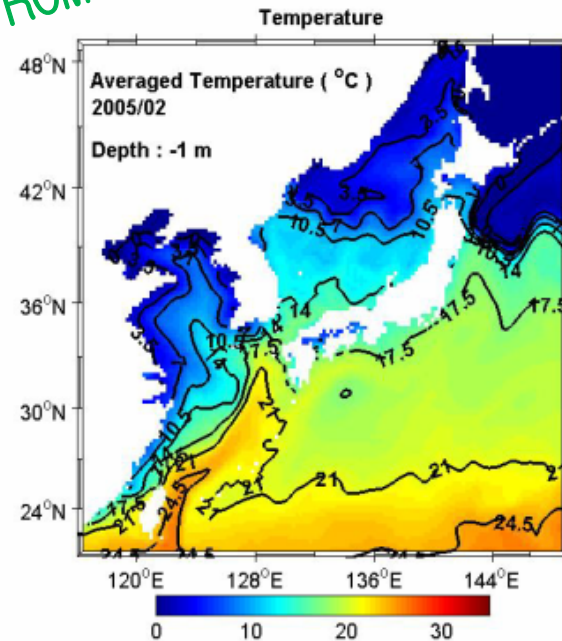
COMS (June 2010) : SST every 15 min.



In-situ data

Moored buoys, Ship
Developing Expandable
Surface Drifting
(T, Pair, wind)

ROMS



⇒ Contribution to GHRSSST

Noteworthy Event : 3 Typhoons within a month in 2010



<DIANMU>



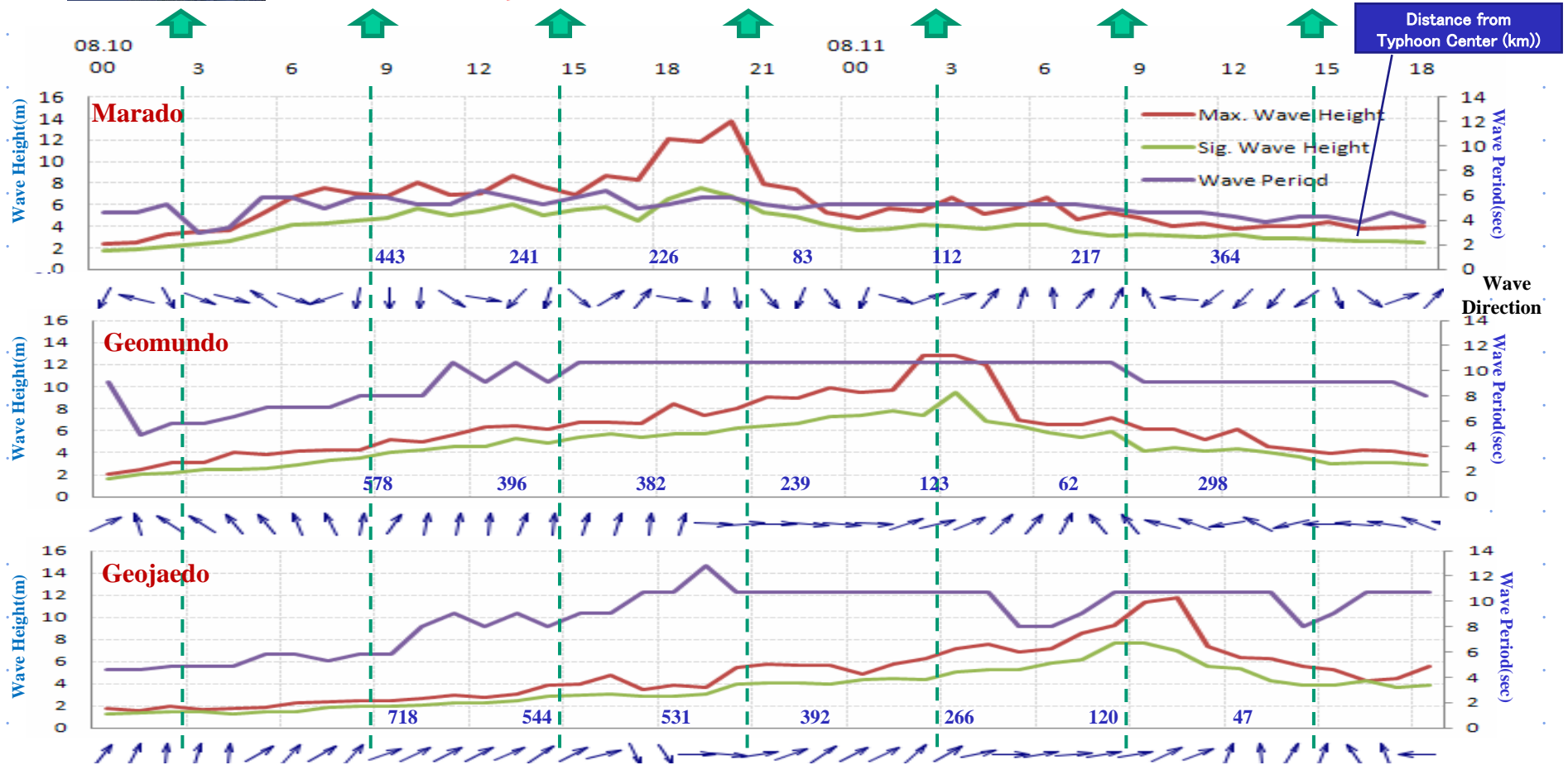
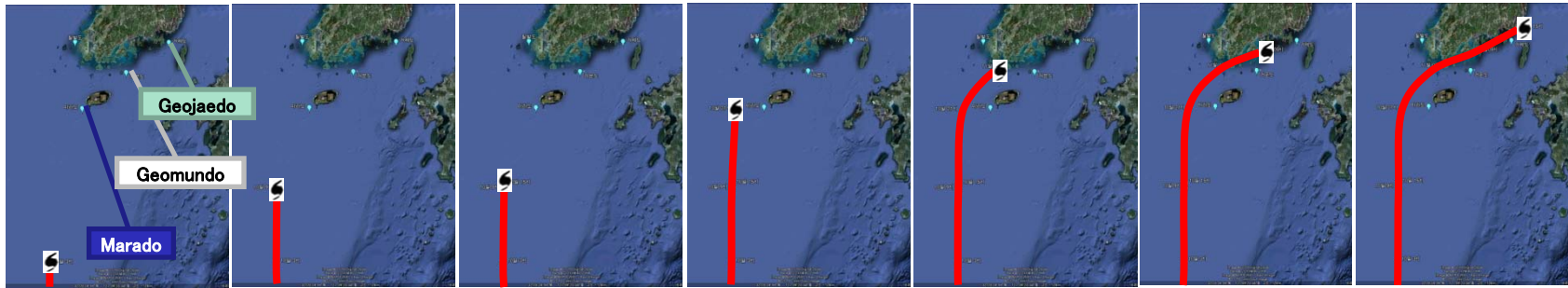
<KOMPASU>



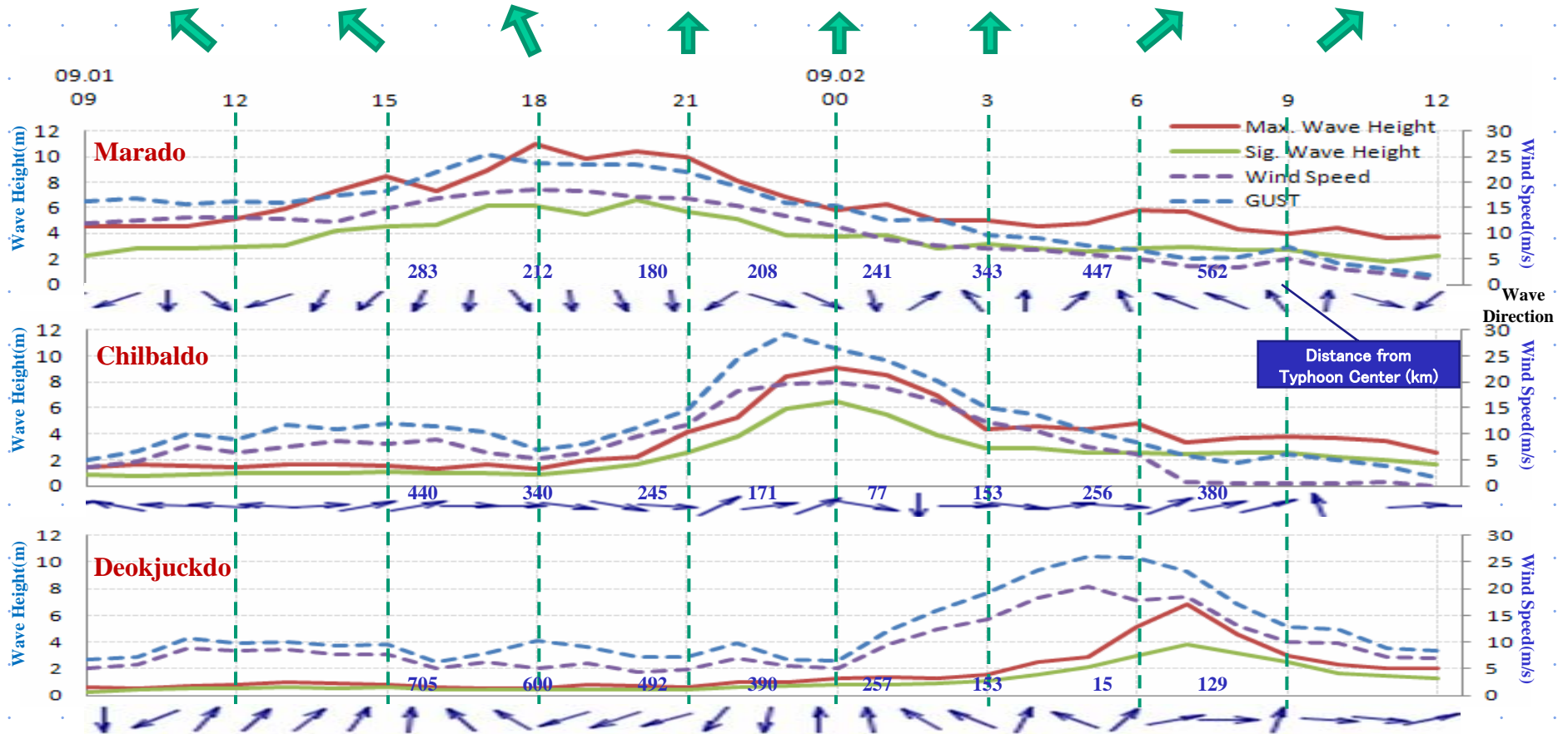
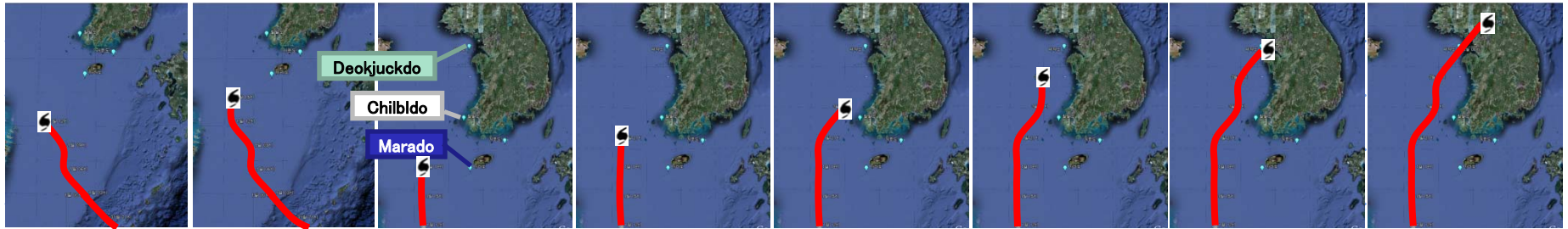
<MALOU>

	DIANMU	KOMPASU	MALOU
Date	'10. 8.8 ~ 8.13.	'10. 8.29 ~ 9.3.	'10. 9.3 ~ 9.8.
Central Pressure	980 hPa	960 hPa	985 hPa
Maximum Wind Gust	31m/s	40m/s	24m/s
Maximum Wave Height	13.7m	11m	7.8m

Typhoon No.4(Dianmu) Route



Typhoon No.7(KOMPASU) Route





Thank You !