

SOC for Drifting Buoy Report 1999-2000

A daily collection and archiving of buoy reports from the world ocean is performed by Météo-France, the French Meteorological service. As usual the French SOC produces monthly graphic products for buoys, moored buoys, drifting buoys, ships. Data are delivered on request, or on a regular basis.

- Figures 1, 2, 3, 4, show the time evolution of reports for wind and for pressure respectively for all BUOY reports (showing all buoys, moored buoys and drifting buoys) and SHIP reports, since the 1st of January 1999.
- Figure 5 shows the time evolution of WAVEOB reports and sensors since the 1st of January 1999. Each month, mapping position plot charts and Marsden square distribution are produced for BATHY, TESAC, SHIP and BUOY and are sent to 70 users in the world.
- Figures 6a,b to 9a,b show these products for August 2000. "a" stands for mapping position plot charts, and "b" for Marsden square distribution. Figure 6: BATHY, 7: TESAC, 8: SHIP, and 9: BUOY. Each month, Marsden square distribution charts of mean monthly data availability (top) and percentage of BUOY reports compared to SHIP + BUOY reports (bottom) for wind, pressure, air temperature, sea surface temperature are produced.
- Figures 10 to 13 show such products for August 1999. Figure 10: Wind, 11: Pressure, 12: Air temperature, 13: Sea surface temperature.

Dr Philippe Dandin
French SOC Representative

Météo-France SCEM/PREVI/MAR 42, av. Coriolis F-31057 Toulouse Cedex
Tel: +33 5 61 07 82 90 Fax: +33 5 61 07 82 09 email : philippe.dandin@meteo.fr

Time evolution of BUOY reports for wind and pressure

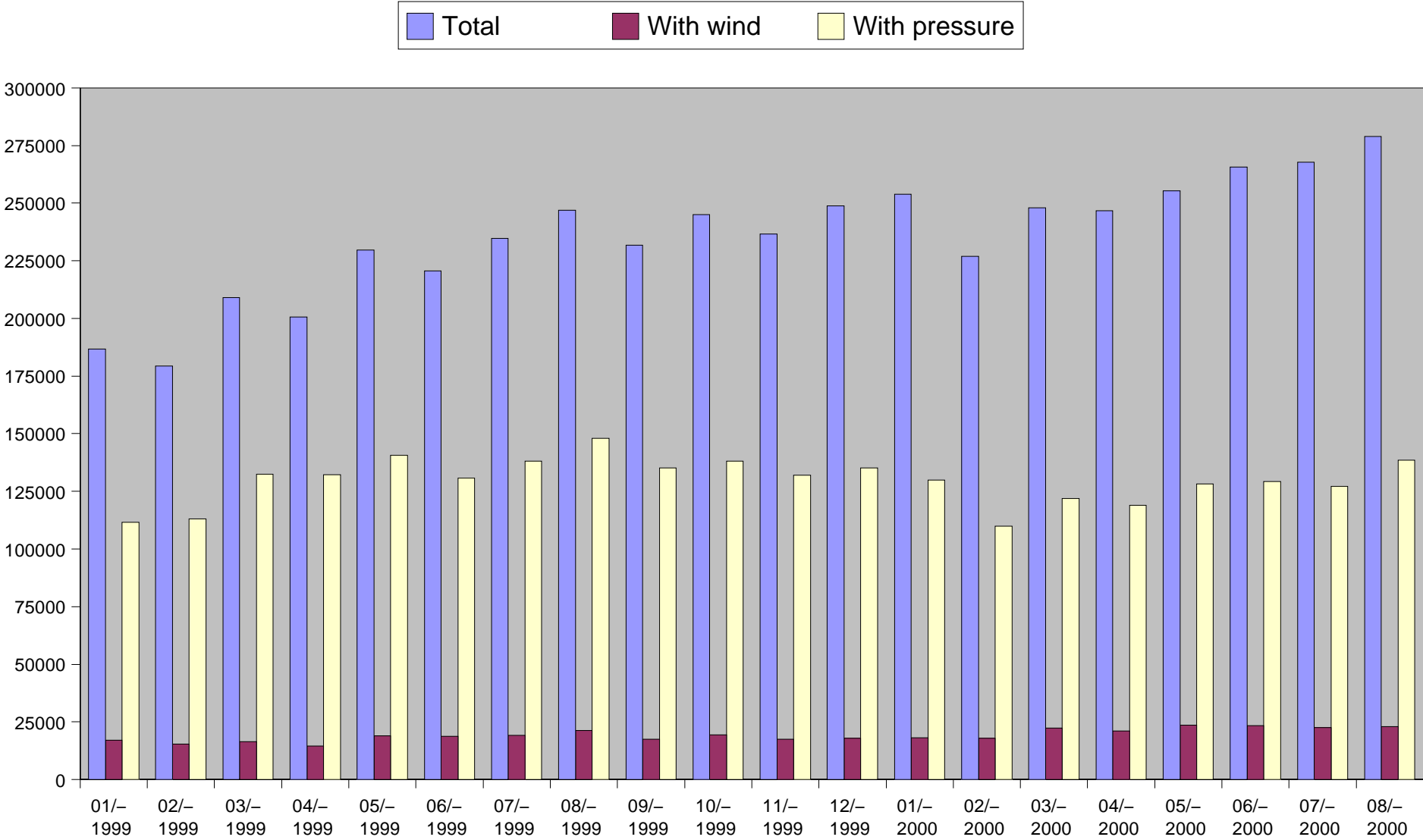


Figure 1

Time evolution of Moored BUOY reports for wind and pressure

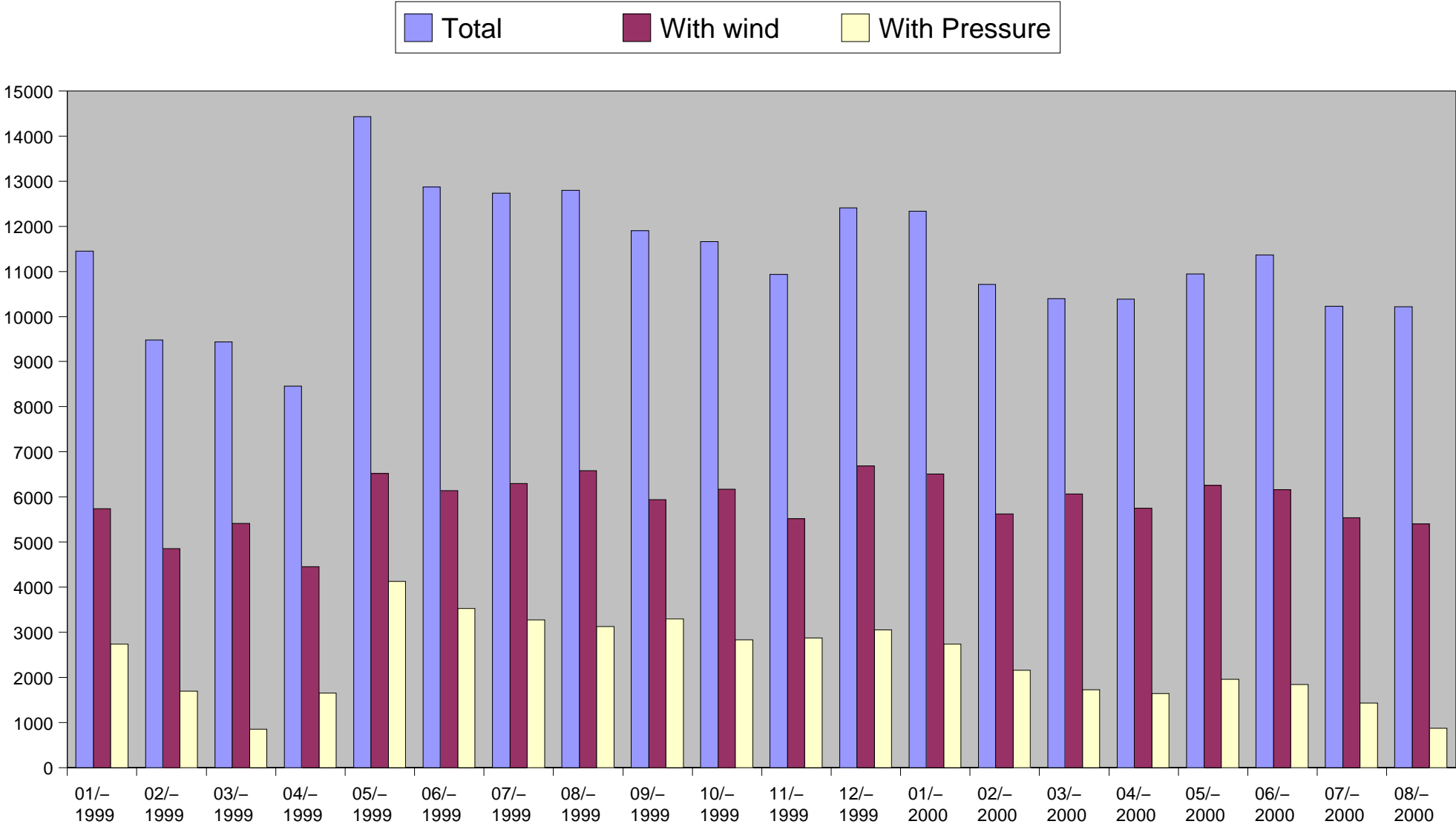


Figure 2

Time evolution of Drifting BUOY reports for wind and pressure

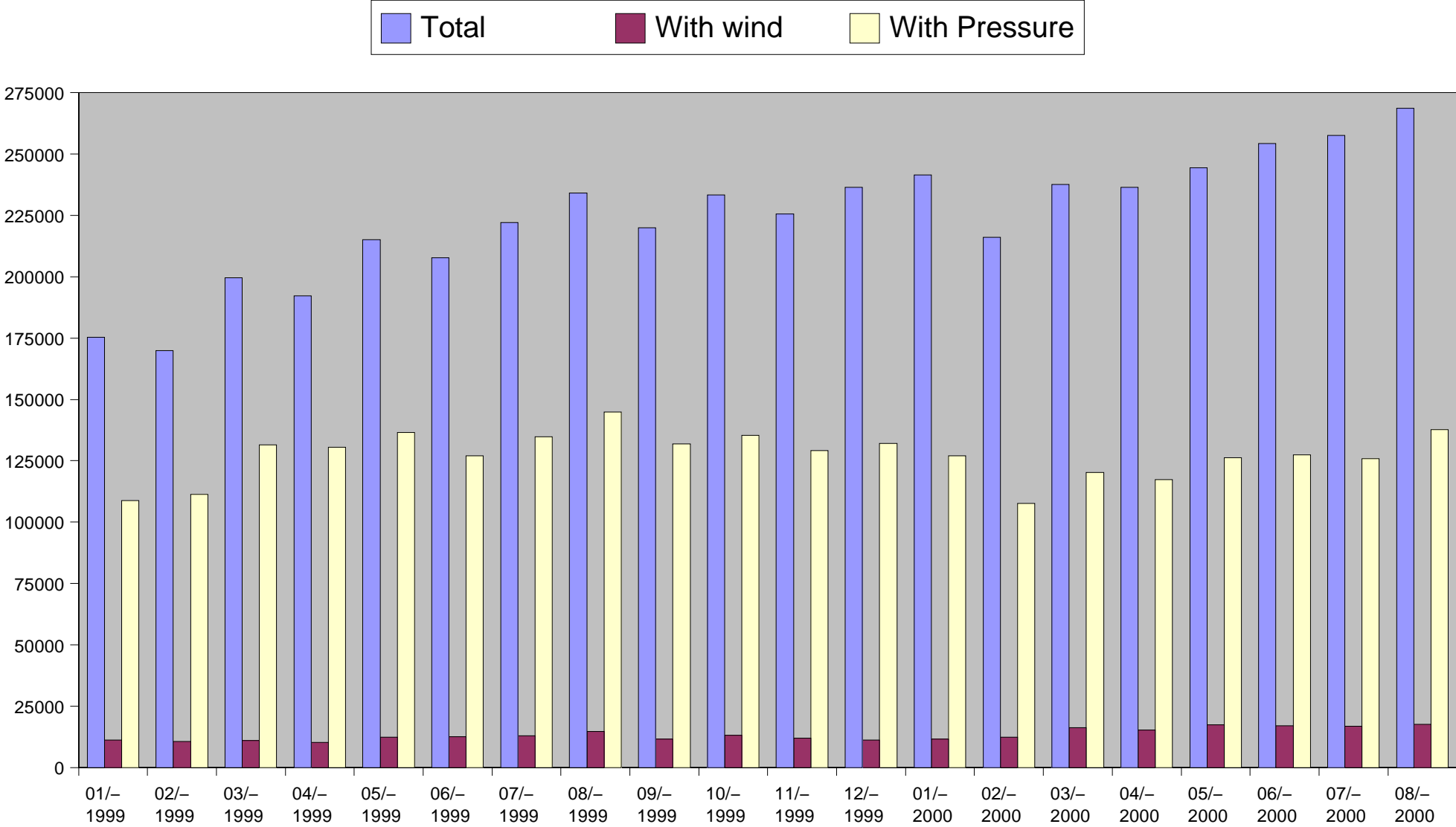


Figure 3

Time evolution of SHIP reports for wind and pressure

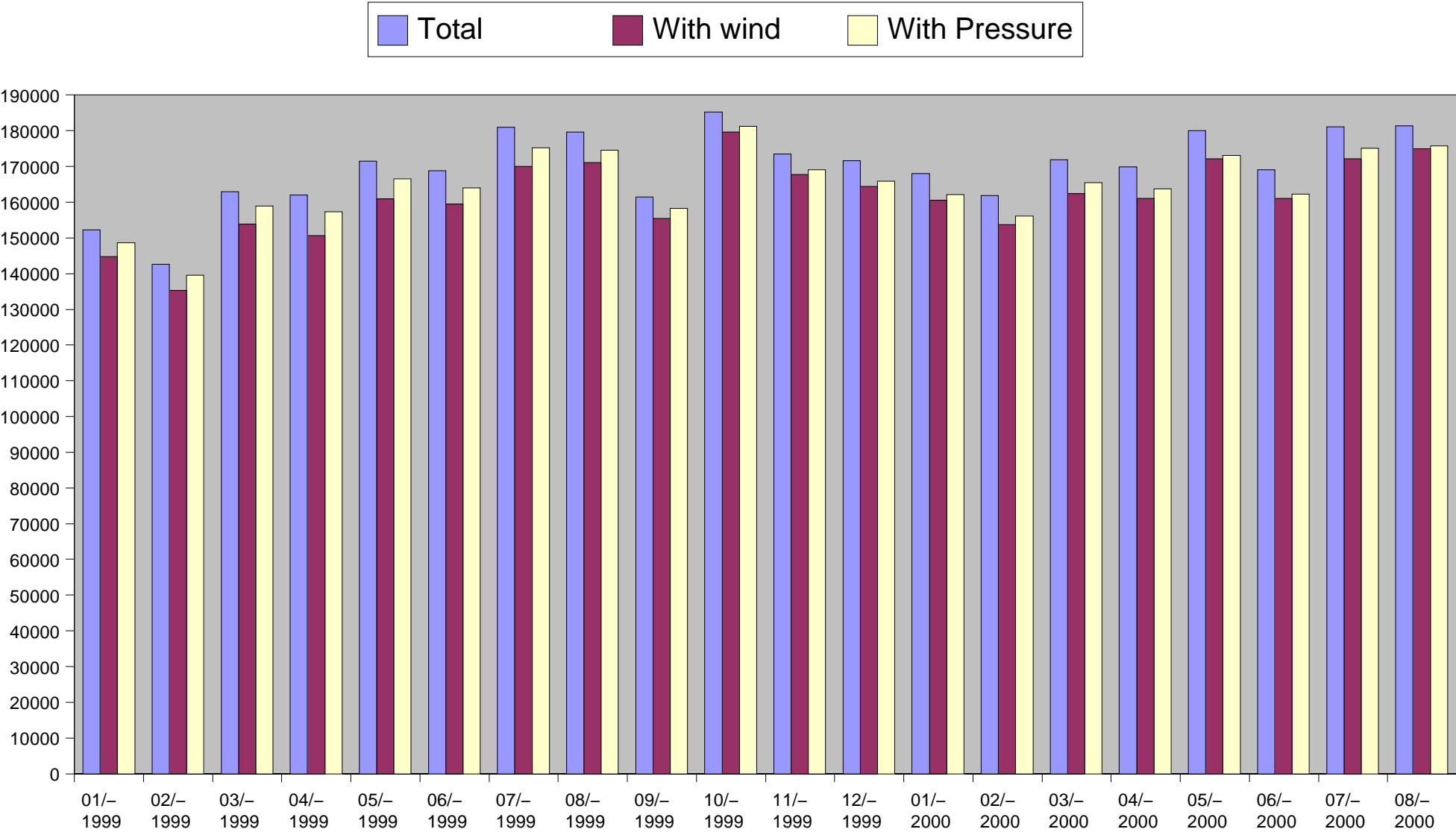


Figure 4

Time evolution of WAVEOB reports and sensors

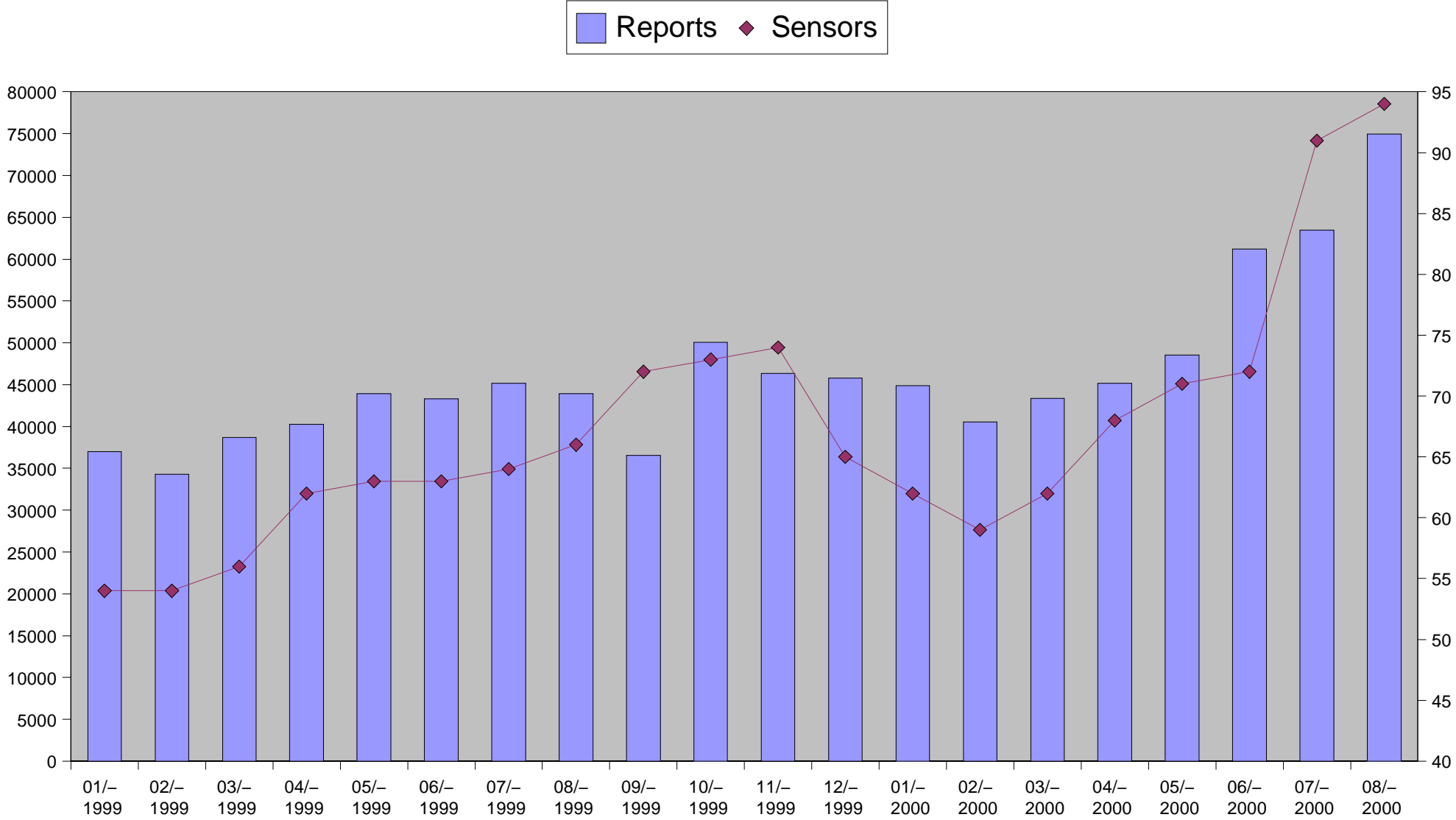


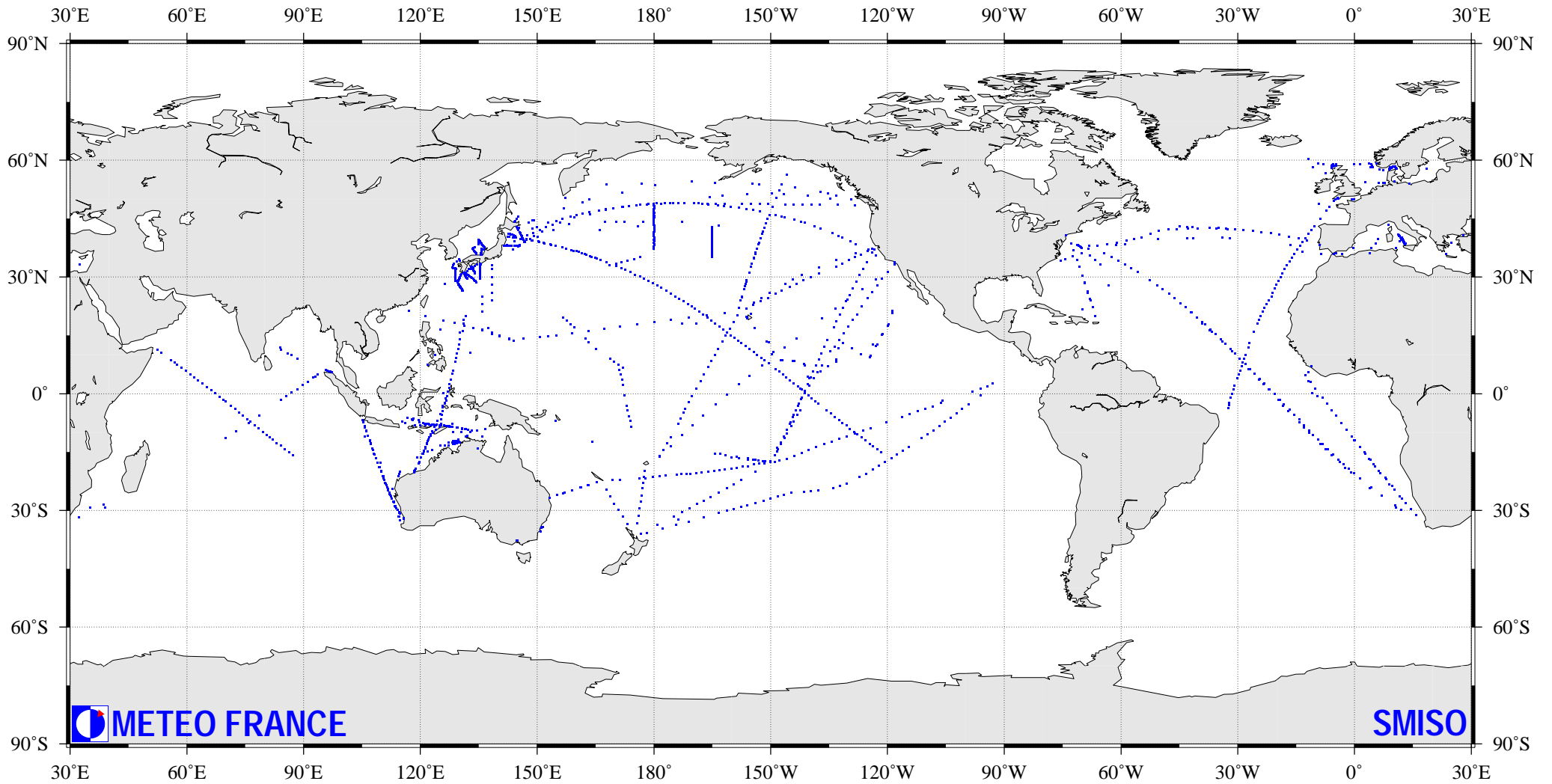
Figure 5

Carte de pointage des observations reçues en août 2000

Mapping position plot chart of data received during august 2000

Messages : BATHY

Total : 2232

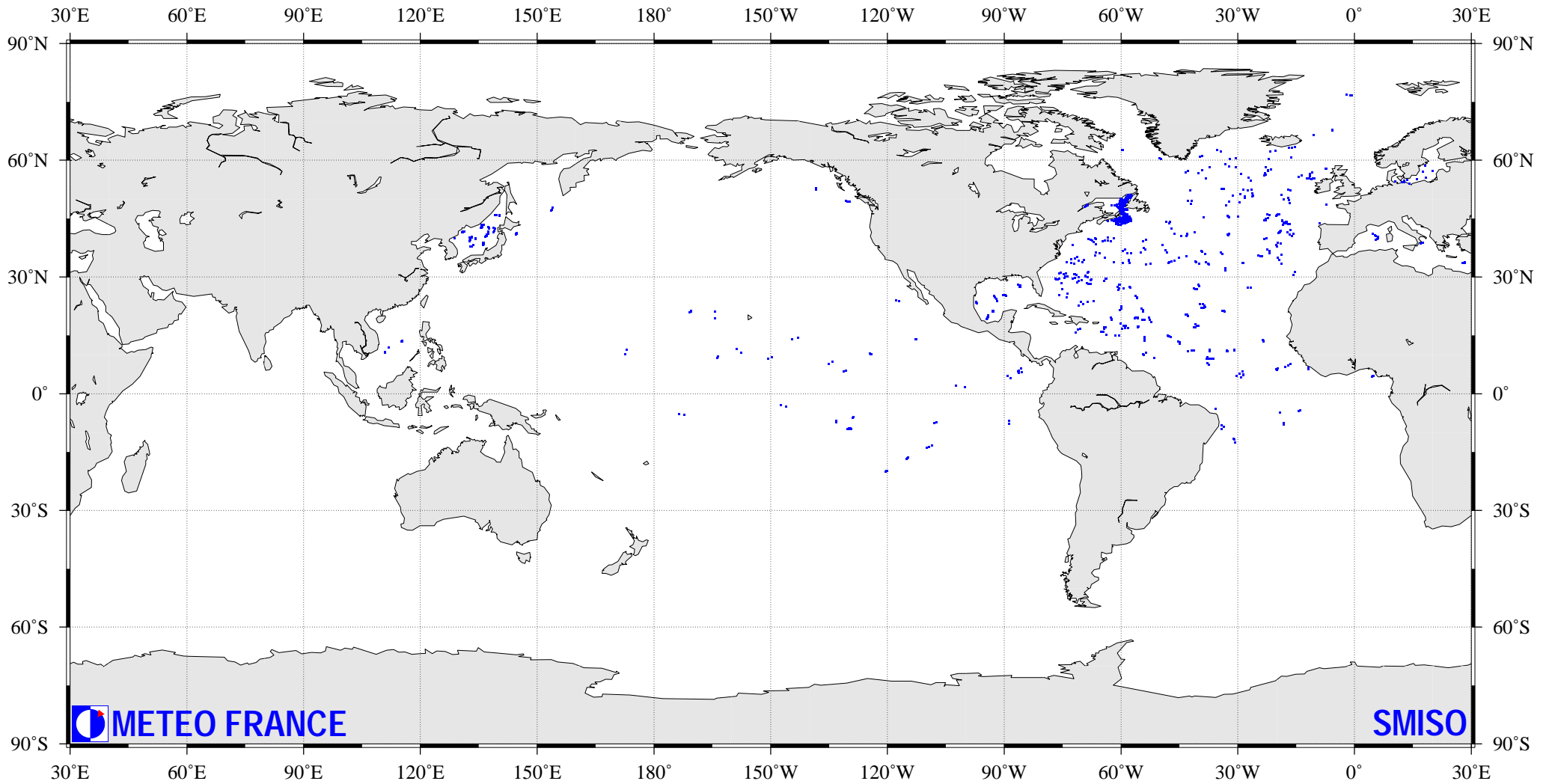


Carte de pointage des observations reçues en août 2000

Mapping position plot chart of data received during august 2000

Messages : TESAC

Total : 868

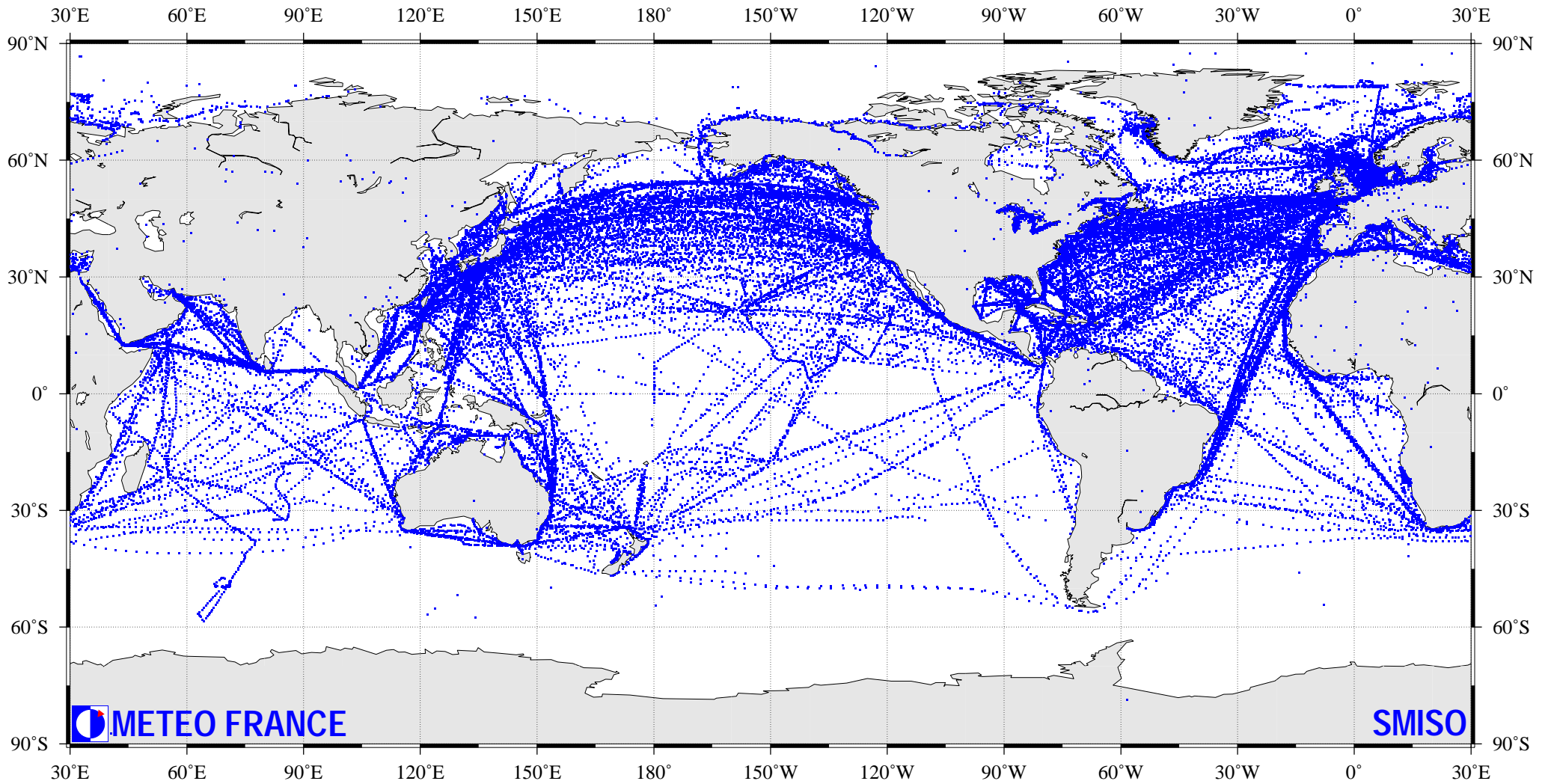


Carte de pointage des observations reçues en août 2000

Mapping position plot chart of data received during august 2000

Messages : SHIP

Total : 181329



Carte de pointage des observations reçues en août 2000

Mapping position plot chart of data received during august 2000

Messages : BUOY

Total : 278912

