

Figure 1: Number of observations of pressure received at Exeter on the GTS for each of the six-month periods covered by the WMO reports on the quality of marine surface observations

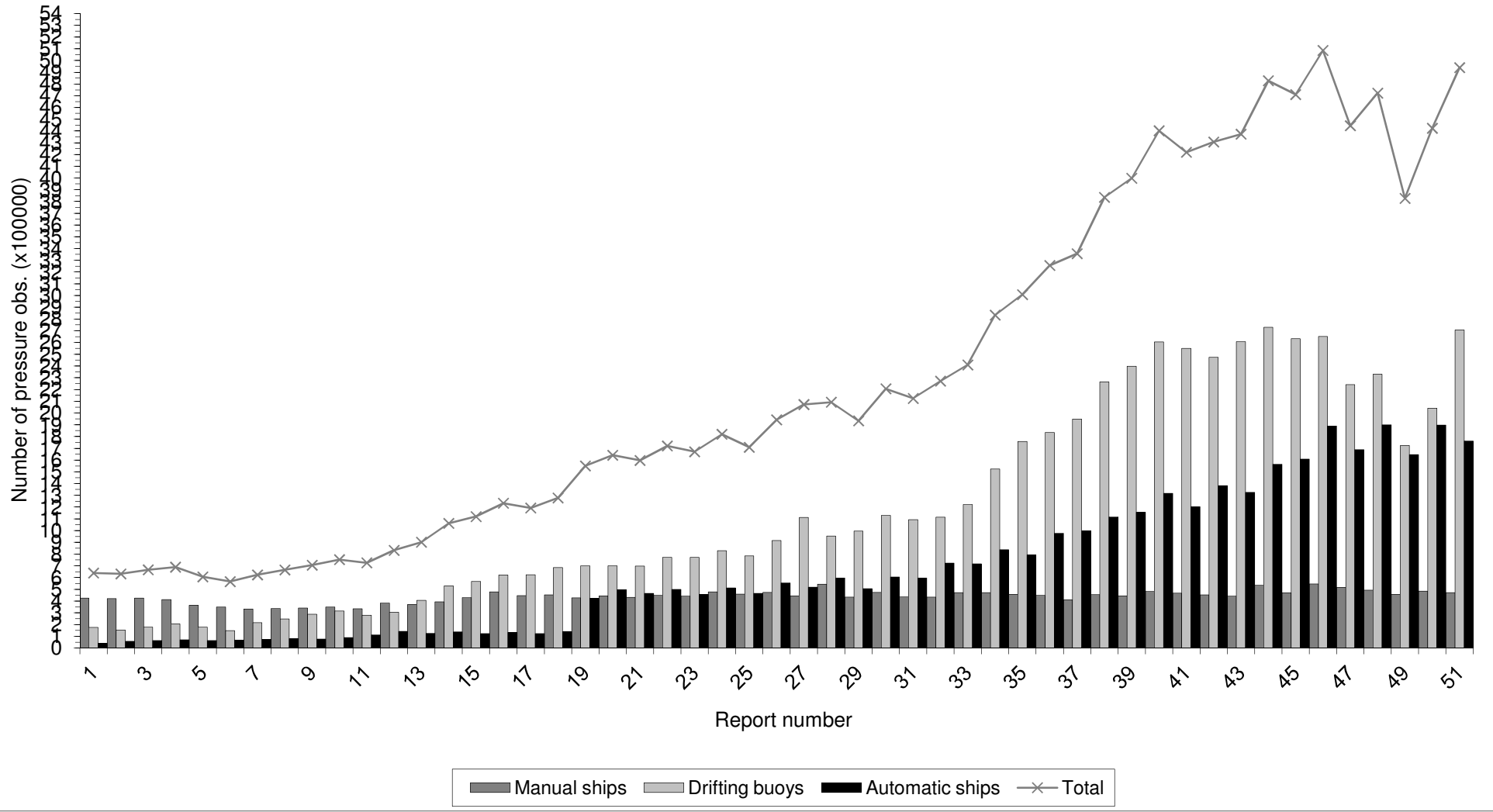


Figure 2a: Distribution of ship O-B pressure (hPa)
Period of data: JAN-JUN 2014 Data used: All observations

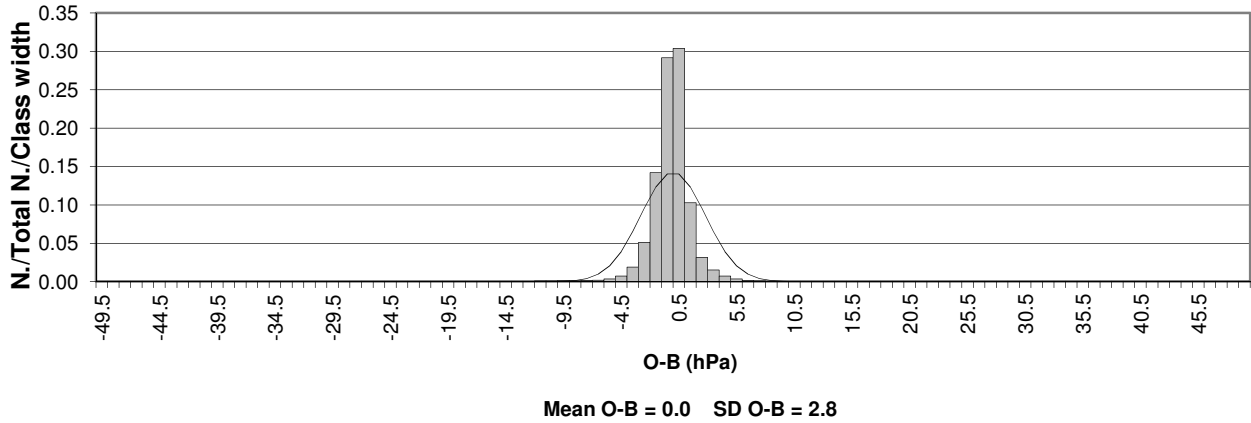


Figure 2b: Distribution of ship O-B pressure (hPa)
Period of data: JAN-JUN 2014 Data used: Flagged observations

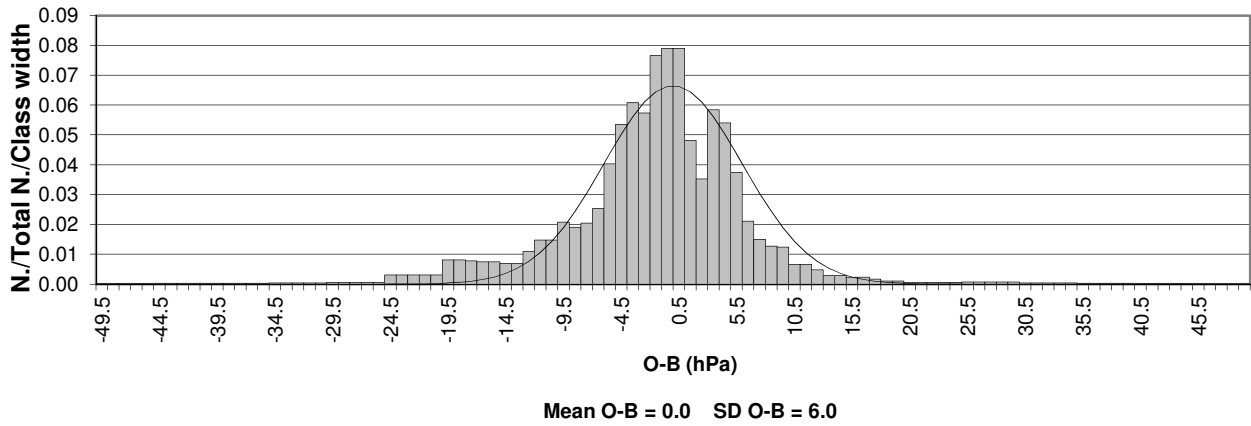


Figure 2c: Distribution of ship O-B pressure (hPa)
Period of data: JAN-JUN 2014 Data used: Unflagged observations

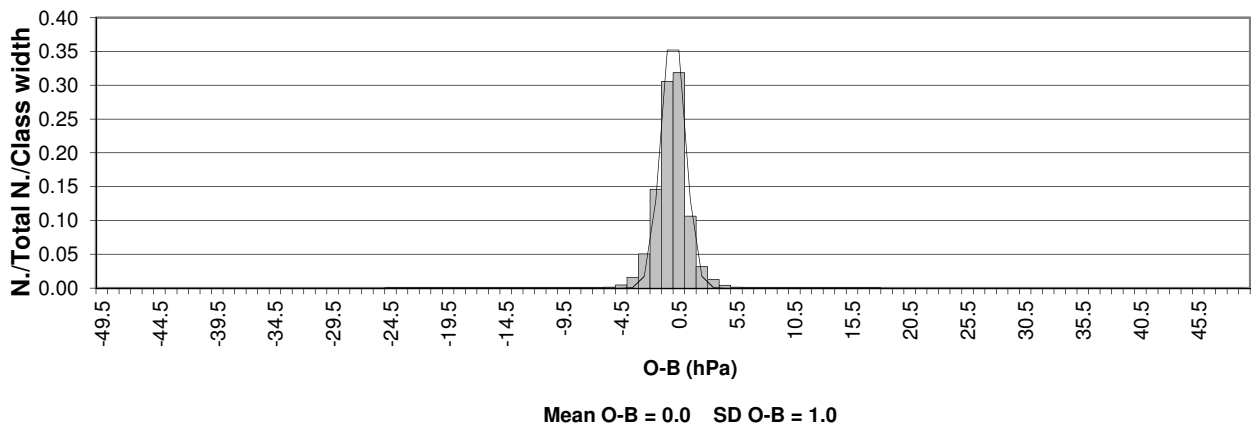


Figure 2d: Distribution of ship O-B wind speed (ms^{-1})
Period of data: JAN-JUN 2014 Data used: All observations

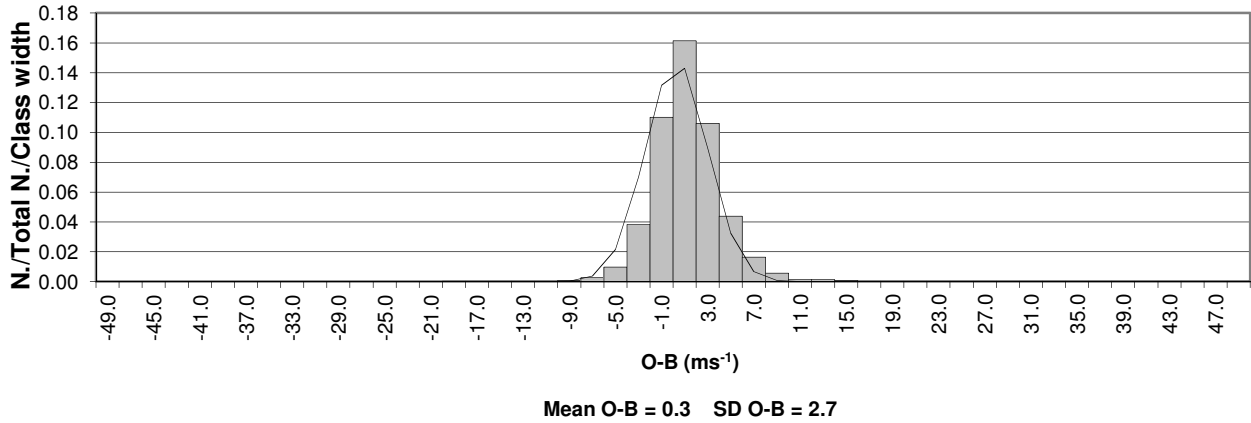


Figure 2e: Distribution of ship O-B wind speed (ms^{-1})
Period of data: JAN-JUN 2014 Data used: Flagged observations

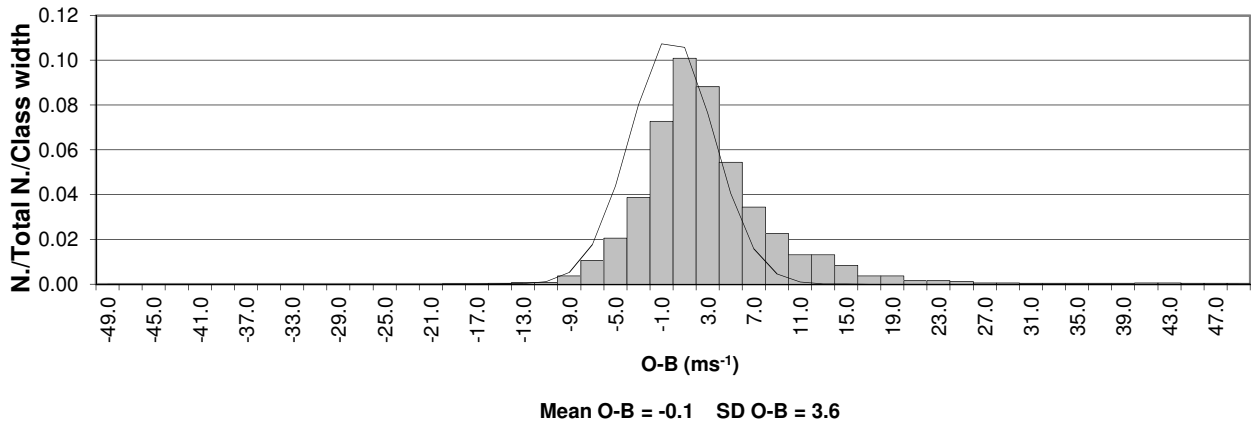


Figure 2f: Distribution of ship O-B wind speed (ms^{-1})
Period of data: JAN-JUN 2014 Data used: Unflagged observations

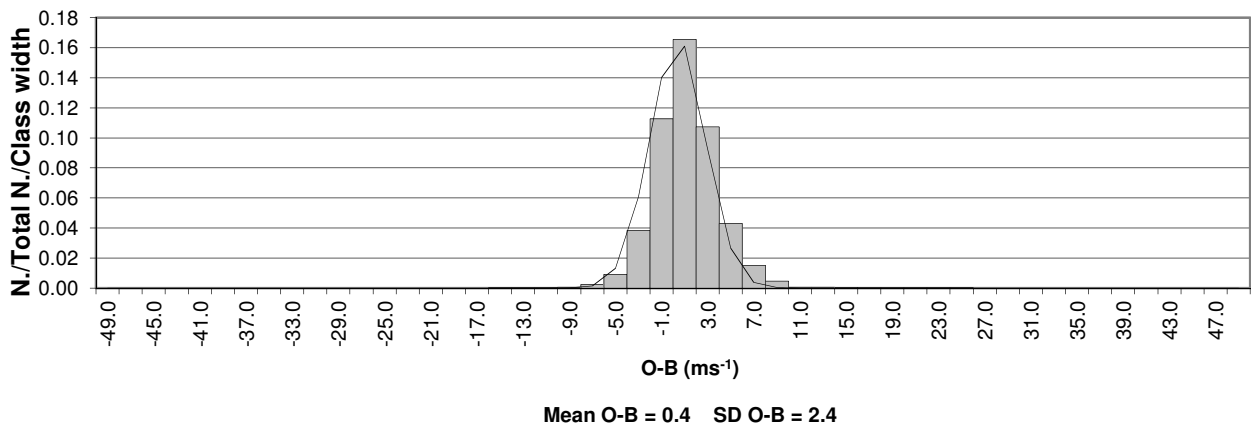


Figure 2g: Distribution of ship O-B wind direction (degrees)
Period of data: JAN-JUN 2014 Data used: All observations

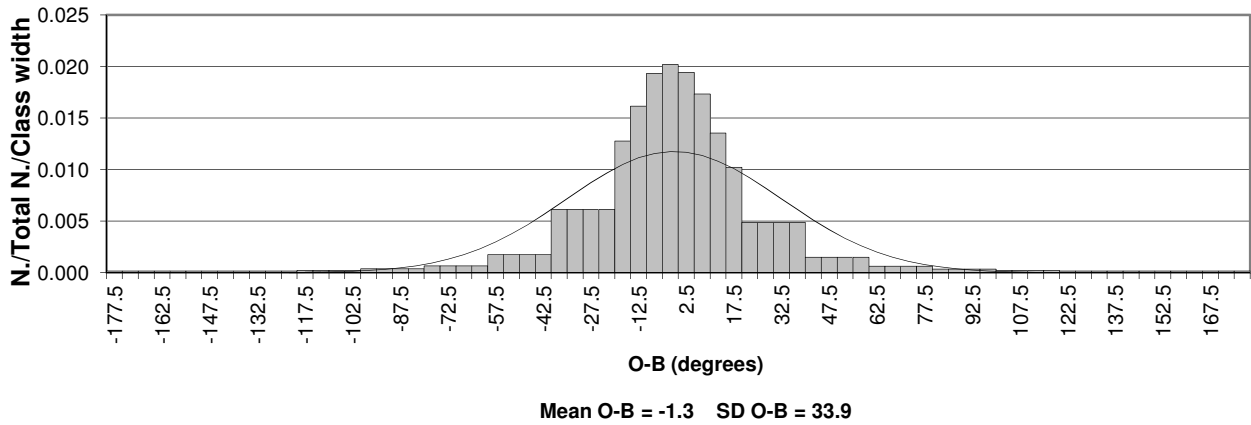


Figure 2h: Distribution of ship O-B wind direction (degrees)
Period of data: JAN-JUN 2014 Data used: Flagged observations

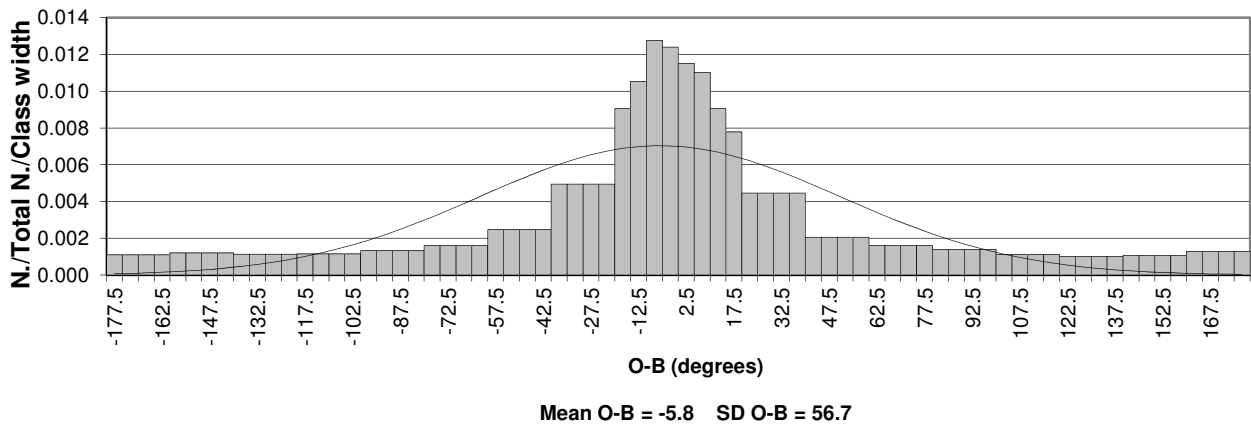


Figure 2i: Distribution of ship O-B wind direction (degrees)
Period of data: JAN-JUN 2014 Data used: Unflagged observations

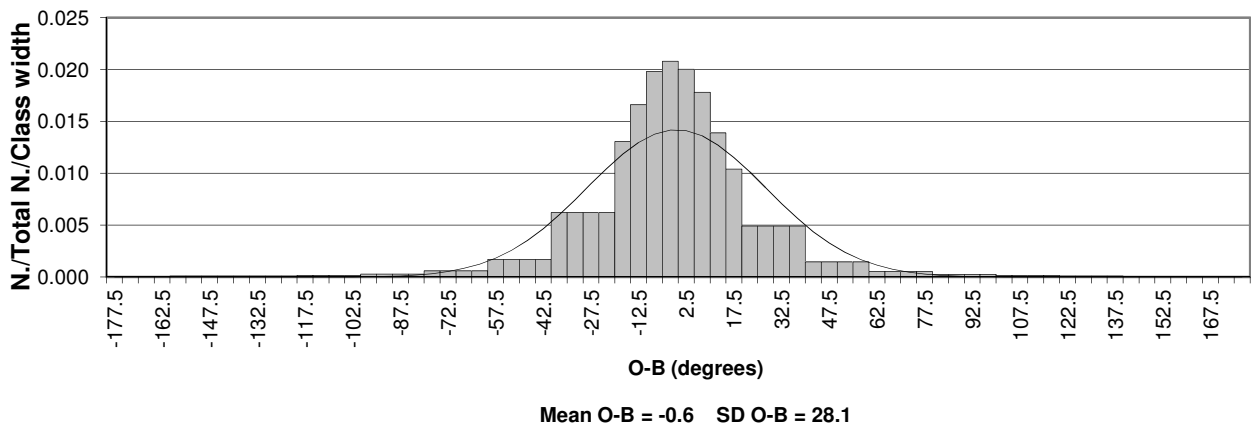


Figure 2j: Distribution of ship O-B SST (°C)
Period of data: JAN-JUN 2014 Data used: All observations

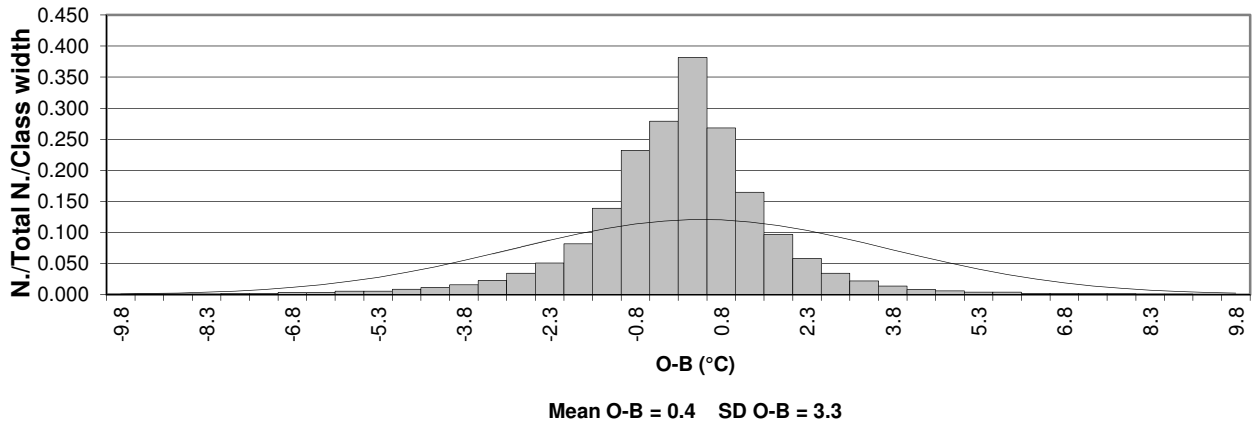


Figure 2k: Distribution of ship O-B SST (°C)
Period of data: JAN-JUN 2014 Data used: Flagged observations

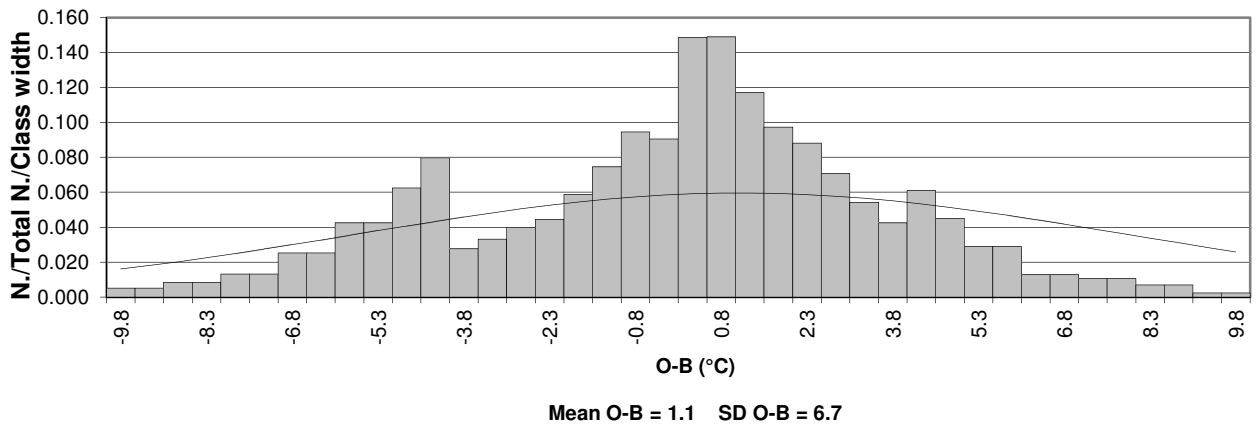


Figure 2l: Distribution of ship O-B SST (°C)
Period of data: JAN-JUN 2014 Data used: Unflagged observations

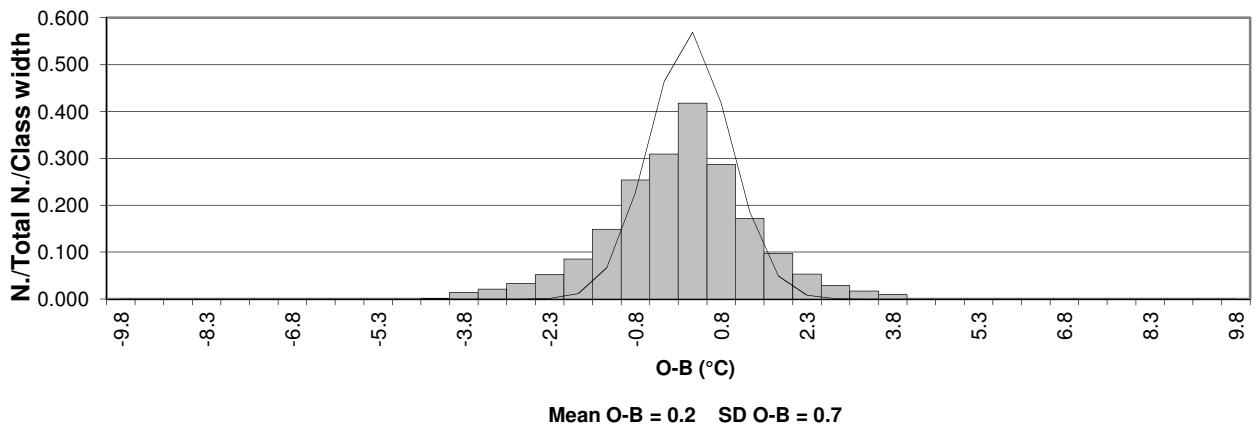


Figure 4: Standard Deviation of Ship O-B Pressure (hPa). Date:- January - June 2014
 Only Observations passing quality control used in statistics
 10 degree box values plotted if the number of observations is greater than 10

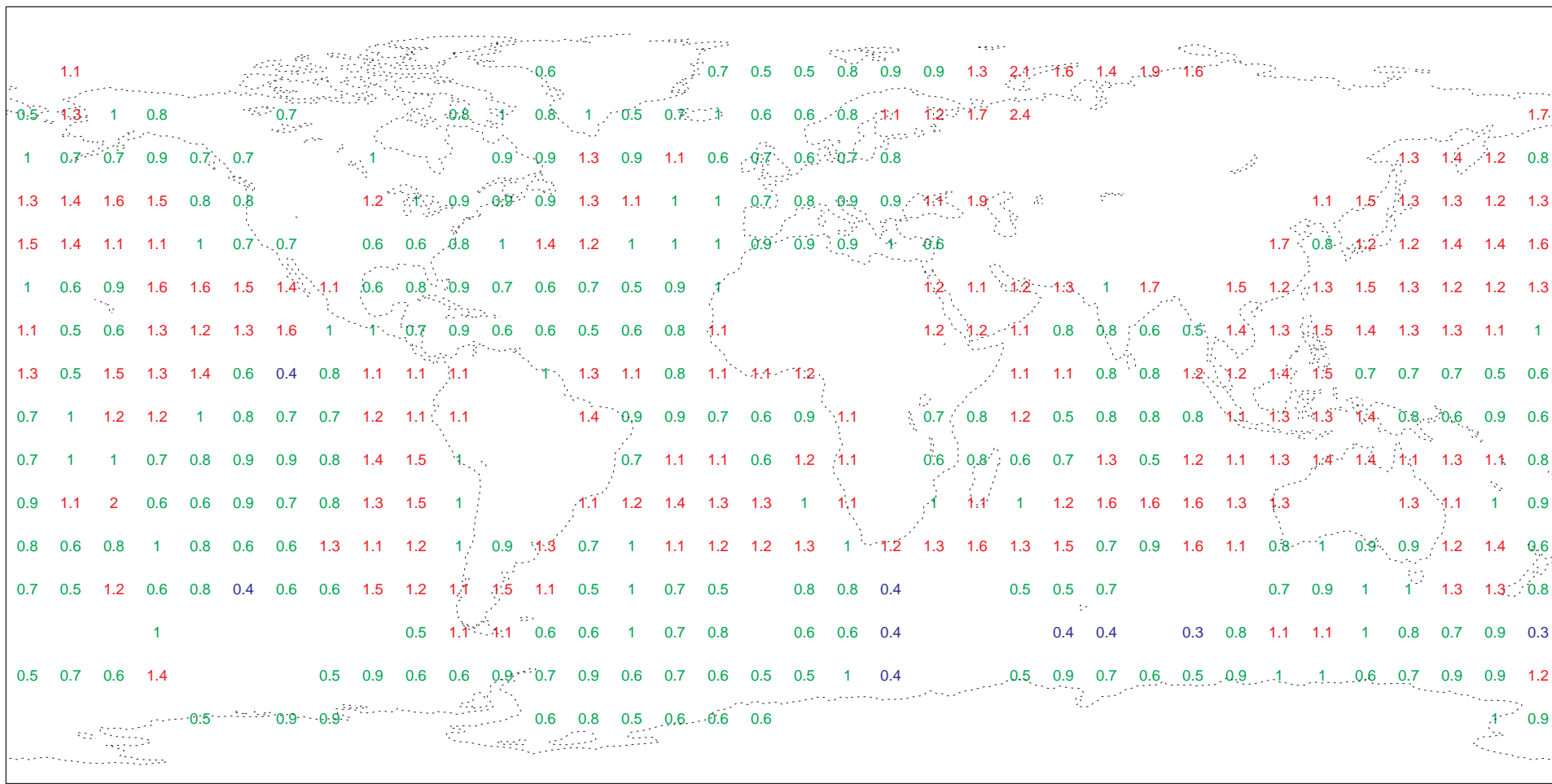


Figure 5:
 Plot of the Number of Ship Pressure Observations. Date:- January - June 2014
 Only observations passing quality control included

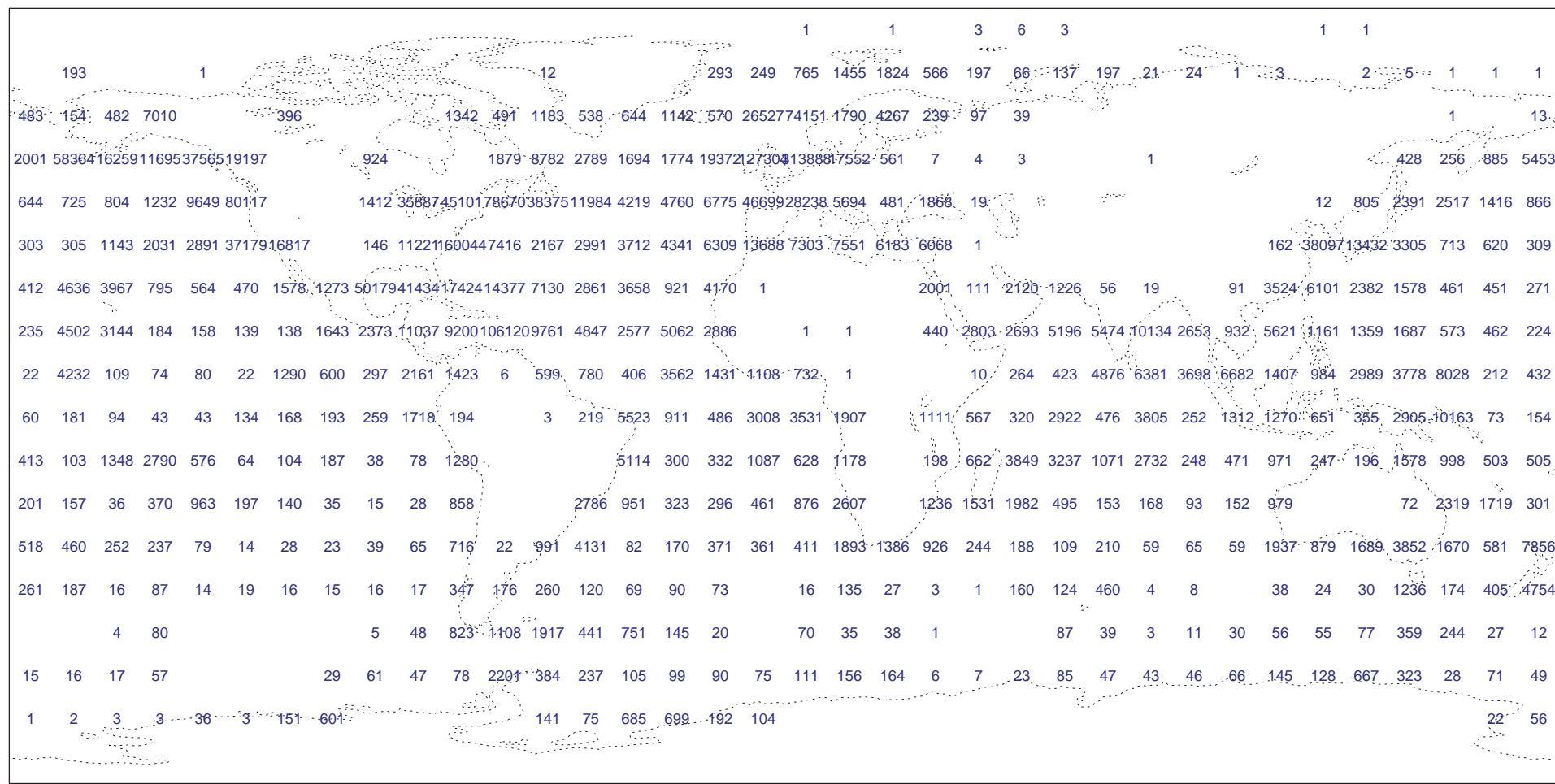


Figure 7: Standard Deviation of Ship O-B Wind Speed (ms-1). Date:- January - June 2014
 Only Observations passing quality control used in statistics
 10 degree box values plotted if the number of observations is greater than 10

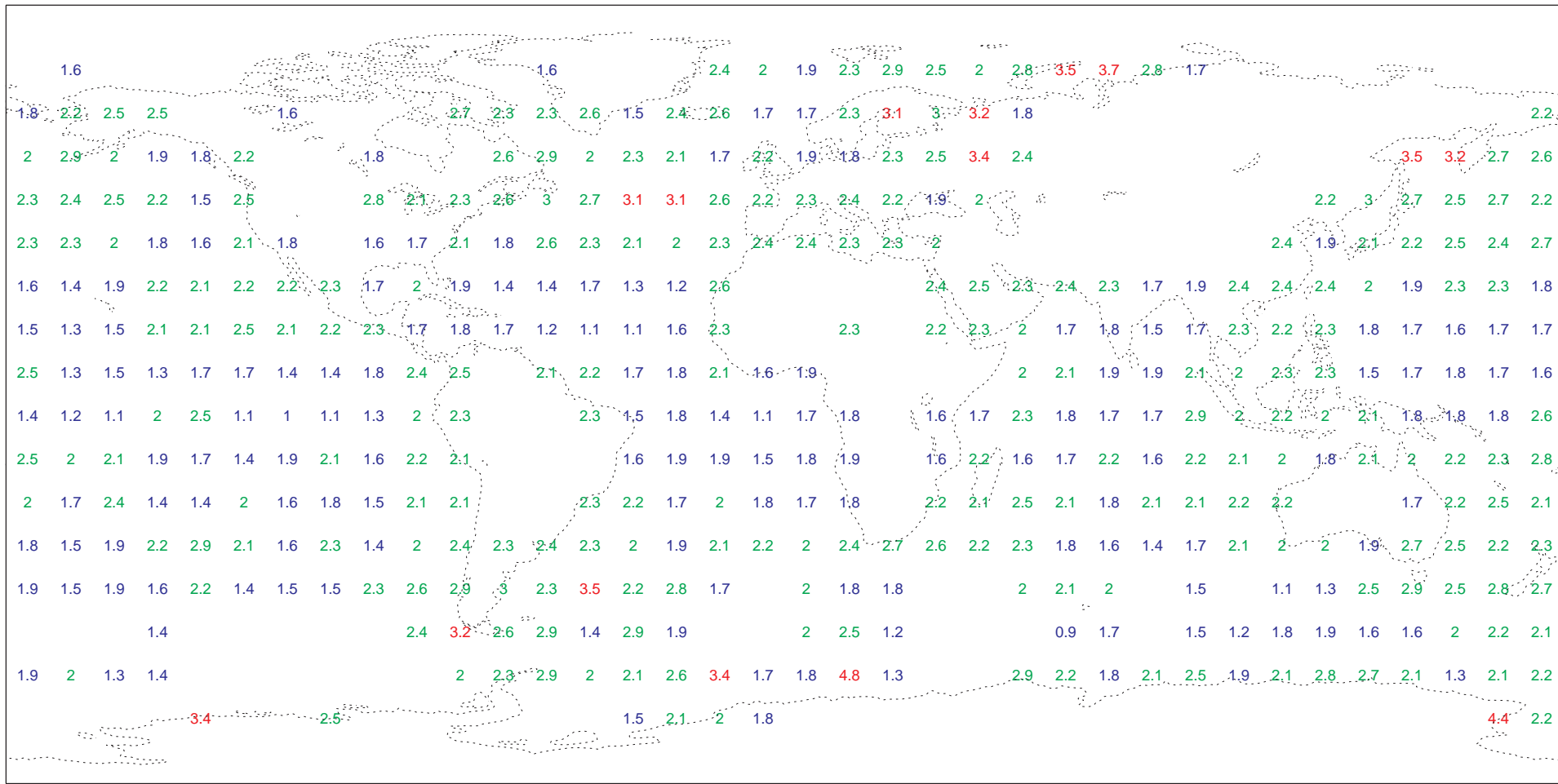


Figure 8:
 Plot of the Number of Ship Wind Speed Observations. Date:- January - June 2014
 Only observations passing quality control included

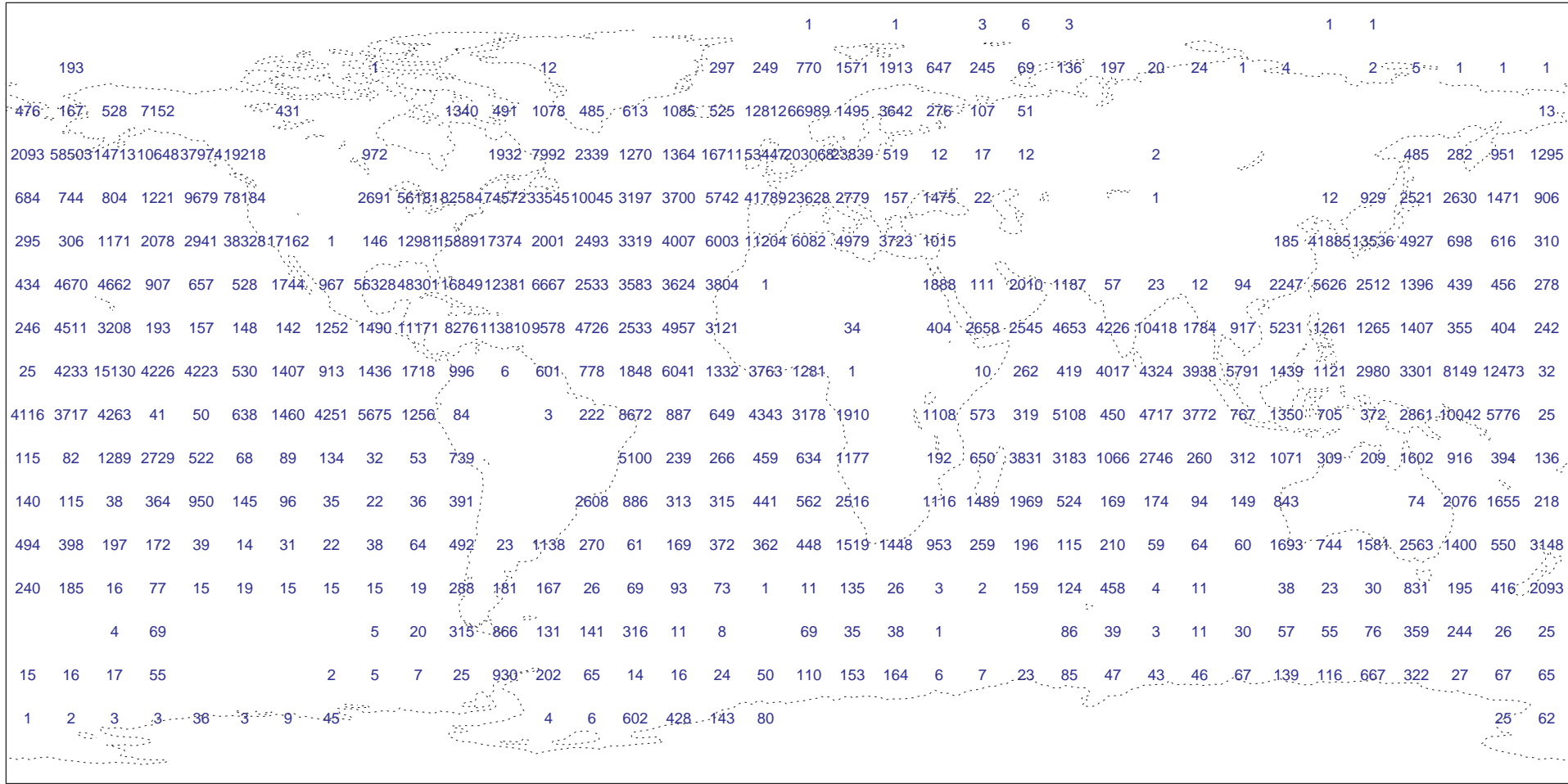


Figure 9: Bias of Ship O-B Wind Direction (degrees). Date:- January - June 2014
 Only observations passing quality control used in statistics
 10 degree box values plotted if the number of observations is greater than 10

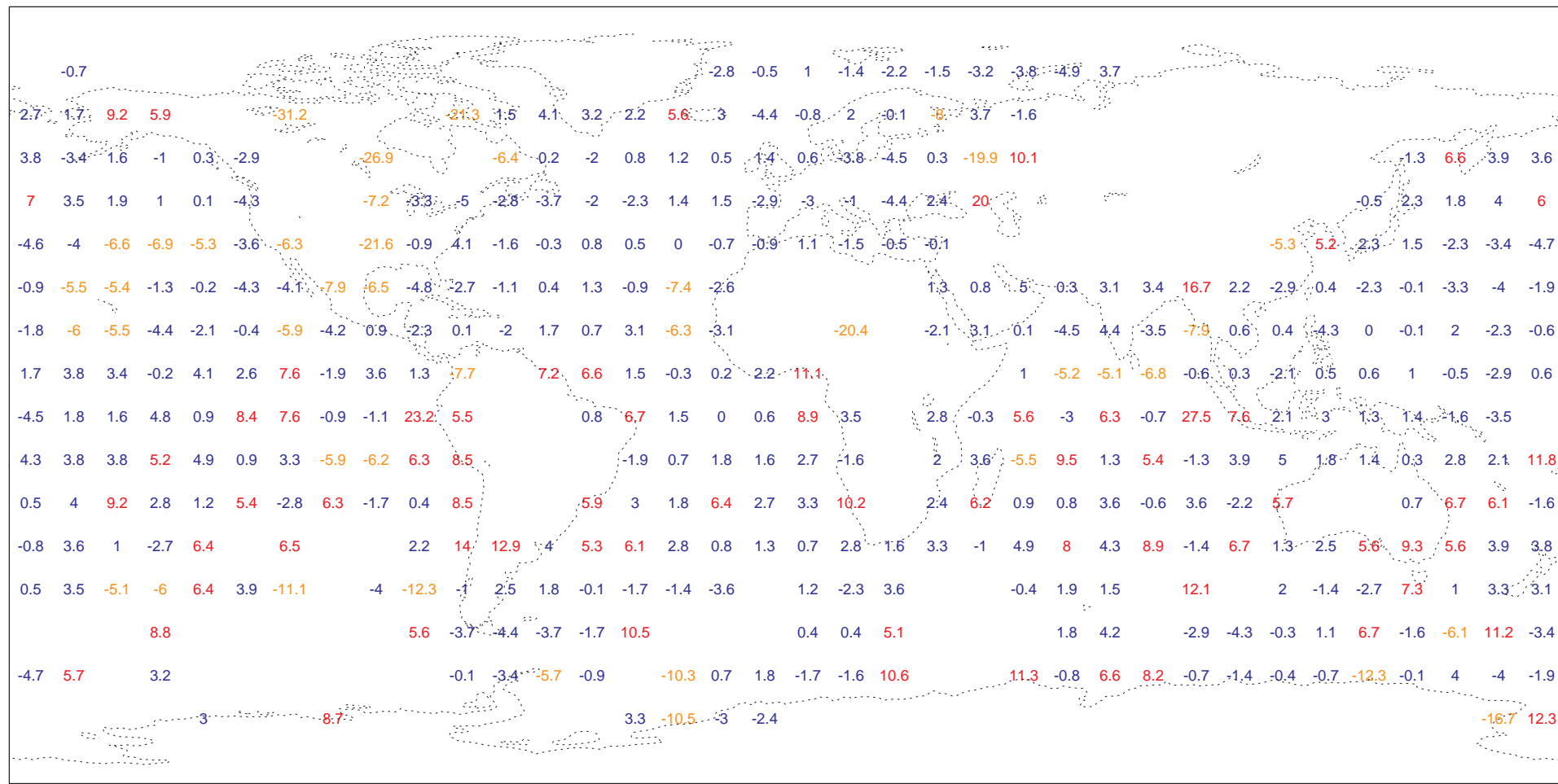


Figure 11:
 Plot of the Number of Ship Wind Direction Observations. Date:- January - June 2014
 Only observations passing quality control included

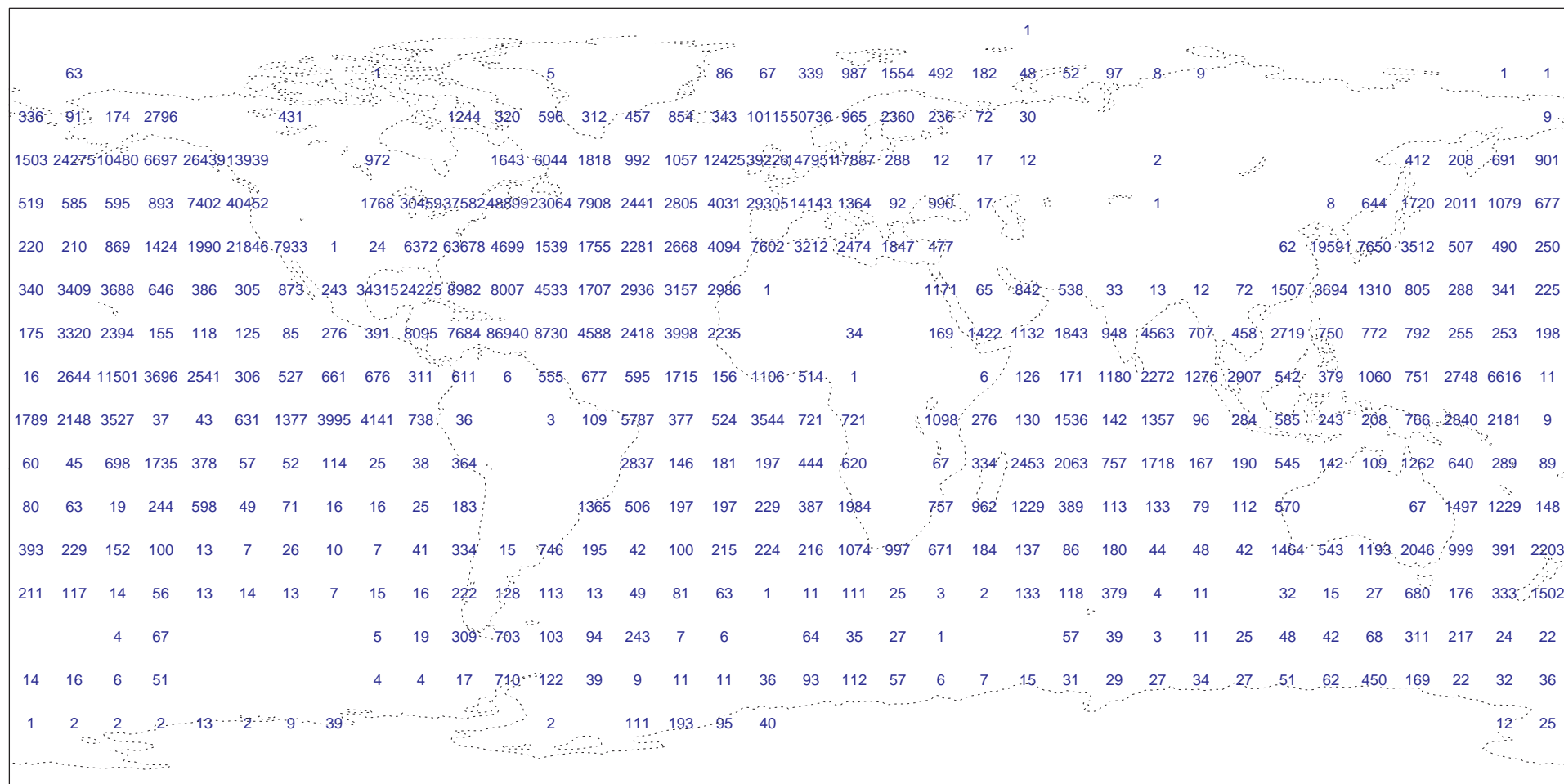


Figure 13: Standard Deviation of Ship O-B SST (degrees C). Date:- January - June 2014
 Only Observations passing quality control used in statistics
 10 degree box values plotted if the number of observations is greater than 10

