

Joint WMO/IOC Technical Commission for
Oceanography - Ship Observation Team

End-to-end report of the ASAP data dissemination performance January to December 2014

1. Introduction

Météo-France is in charge of a end-to-end report of the ASAP data dissemination performance.

The matter of this paper is to evaluate the results of the three last months (January 2014 – December 2014).

2. Information available at Météo-France

TEMP-SHIP messages are received at LFPW (Toulouse) from EGRR (Exeter), EDZW (Offenbach) and Email.

The following information is available :

Reception at LFPW	Broadcast by LFPW
Call sign	Call sign
Header	Channel
Channel	Broadcast date
Reception date	Time lapse
Size	Broadcast size
Format	Recipient
Error	
Operator	

3. List of call signs available

Country	Call sign	Country	Call sign
Denmark	ASDK01	Japan	JCCX
	ASDK02		JGQH
	ASDK3		JIVB
E-ASAP	ASEU01		JDWX
	ASEU02		JNSR
	ASEU03		JDSS
	ASEU04	Spain	ASES01
	ASEU05	USA	WTEC
	ASEU06		
France	ASFR1		
	ASFR2		
	ASFR3		
	ASFR4		
Germany	ASDE01		
	ASDE02		
	ASDE03		
	ASDE04	Test	SHIP
	DBLK		ASDE09
	DFCG		

4. Origin of the messages

Call sign	Offenbach	Exeter	Telex	Email	Mariner	Supervis	X25
ASEU01	366	0	0	0	0	0	0
ASEU02	844	0	0	0	0	0	0
ASEU03	806	0	0	0	0	0	0
ASEU04	746	0	0	0	0	0	0
ASEU05	672	0	0	0	0	0	0
ASEU06	497	0	0	0	0	0	0
ASDE01	835	0	0	0	0	0	0
ASDE02	674	0	0	0	0	0	0
ASDE03	904	0	0	0	0	0	0
ASDE04	796	0	0	0	0	0	0
DBLK	1357	0	0	0	0	0	0
DFCG	81	0	0	0	0	0	0
ASDK01	785	0	0	0	0	0	0
ASDK02	1277	0	0	0	0	0	0
ASDK3	1000	0	0	0	0	0	0
ASES01	766	0	0	0	0	0	0
ASFR1	0	0	0	1009	0	0	0
ASFR2	0	4	0	785	0	0	0
ASFR3	0	12	0	1063	0	0	0
ASFR4	0	0	0	1148	0	0	0
JGQH	0	479	0	0	0	0	0
JNSR	0	794	0	0	0	0	0
Test							
ASDE09	65	0	0	0	0	0	0
Wrong or strange call sign							
ASDK1	111	0	0	0	0	0	0
ASDK2	161	0	0	0	0	0	0
ASUK02	0	1274	0	0	0	0	0
DBLKHEADING:UKVX01	1	0	0	0	0	0	0
EGRR	0	6	0	0	0	0	0
XXXXX	1053	1	0	297	0	0	0
numer.	1	1	0	0	0	0	0

Mariner: French navy military sounding
 Supervis: handled by operator

5. Global system performance

Month	Origin	Nb of messages received	Nb of messages in error	Percentage of messages in error	Nb of messages with operator action	Percentage of messages with operator action
2014-Jan	Offenbach	897	0	0		
	Exeter	84	0	0		
	Telex	0	not relevant	not relevant		
	Email	218	not relevant	not relevant		
	Mariner	0	not relevant	not relevant		
	X25	0	not relevant	not relevant		
	Supervis	0	0	not relevant		
	Total	1199	0	0	0	0
2014-Feb	Offenbach	1191	0	0		
	Exeter	91	0	0		
	Telex	0	not relevant	not relevant		
	Email	350	not relevant	not relevant		
	Mariner	0	not relevant	not relevant		
	X25	0	not relevant	not relevant		
	Supervis	0	0	not relevant		
	Total	1632	0	0	0	0
2014-Mar	Offenbach	1468	0	0		
	Exeter	49	0	0		
	Telex	0	not relevant	not relevant		
	Email	422	not relevant	not relevant		
	Mariner	0	not relevant	not relevant		
	X25	0	not relevant	not relevant		
	Supervis	0	0	not relevant		
	Total	1939	0	0	0	0
2014-Apr	Offenbach	1114	0	0		
	Exeter	0	0	0		
	Telex	0	not relevant	not relevant		
	Email	376	not relevant	not relevant		
	Mariner	0	not relevant	not relevant		
	X25	0	not relevant	not relevant		
	Supervis	0	0	not relevant		
	Total	1490	0	0	0	0
2014-May	Offenbach	1106	2	0,18		
	Exeter	69	0	0		
	Telex	0	not relevant	not relevant		
	Email	400	not relevant	not relevant		
	Mariner	0	not relevant	not relevant		
	X25	0	not relevant	not relevant		
	Supervis	0	0	not relevant		
	Total	1575	2	0,17	0	0
2014-Jun	Offenbach	1287	0	0		
	Exeter	12	0	0		
	Telex	0	not relevant	not relevant		
	Email	389	not relevant	not relevant		
	Mariner	0	not relevant	not relevant		
	X25	0	not relevant	not relevant		
	Supervis	0	0	not relevant		
	Total	1688	0	0	0	0

2014-Jul	Offenbach	1443	0	0		
	Exeter	447	0	0		
	Telex	0	not relevant	not relevant		
	Email	412	not relevant	not relevant		
	Mariner	0	not relevant	not relevant		
	X25	0	not relevant	not relevant		
	Supervis	0	0	not relevant		
	Total	2302	0	0	0	0
2014-Aug	Offenbach	1300	0	0		
	Exeter	549	0	0		
	Telex	0	not relevant	not relevant		
	Email	426	not relevant	not relevant		
	Mariner	0	not relevant	not relevant		
	X25	0	not relevant	not relevant		
	Supervis	0	0	not relevant		
	Total	2275	0	0	0	0
2014-Sep	Offenbach	1305	0	0		
	Exeter	1126	0	0		
	Telex	0	not relevant	not relevant		
	Email	380	not relevant	not relevant		
	Mariner	0	not relevant	not relevant		
	X25	0	not relevant	not relevant		
	Supervis	0	0	not relevant		
	Total	2811	0	0	0	0
2014-Oct	Offenbach	873	0	0		
	Exeter	99	0	0		
	Telex	0	not relevant	not relevant		
	Email	252	not relevant	not relevant		
	Mariner	0	not relevant	not relevant		
	X25	0	not relevant	not relevant		
	Supervis	0	0	not relevant		
	Total	1224	0	0	0	0
2014-Nov	Offenbach	875	0	0		
	Exeter	15	0	0		
	Telex	0	not relevant	not relevant		
	Email	337	not relevant	not relevant		
	Mariner	0	not relevant	not relevant		
	X25	0	not relevant	not relevant		
	Supervis	0	0	not relevant		
	Total	1227	0	0	0	0
2014-Dec	Offenbach	939	0	0		
	Exeter	30	0	0		
	Telex	0	not relevant	not relevant		
	Email	340	not relevant	not relevant		
	Mariner	0	not relevant	not relevant		
	X25	0	not relevant	not relevant		
	Supervis	0	0	not relevant		
	Total	1309	0	0	0	0
Total	Offenbach	13798	2	0,01		
	Exeter	2571	0	0		
	Telex	0	0	not relevant		
	Email	4302	16	0,37		
	Mariner	0	not relevant	not relevant		
	X25	0	not relevant	not relevant		
	Supervis	0	0	not relevant		
	Total	20671	2	0,01	0	0

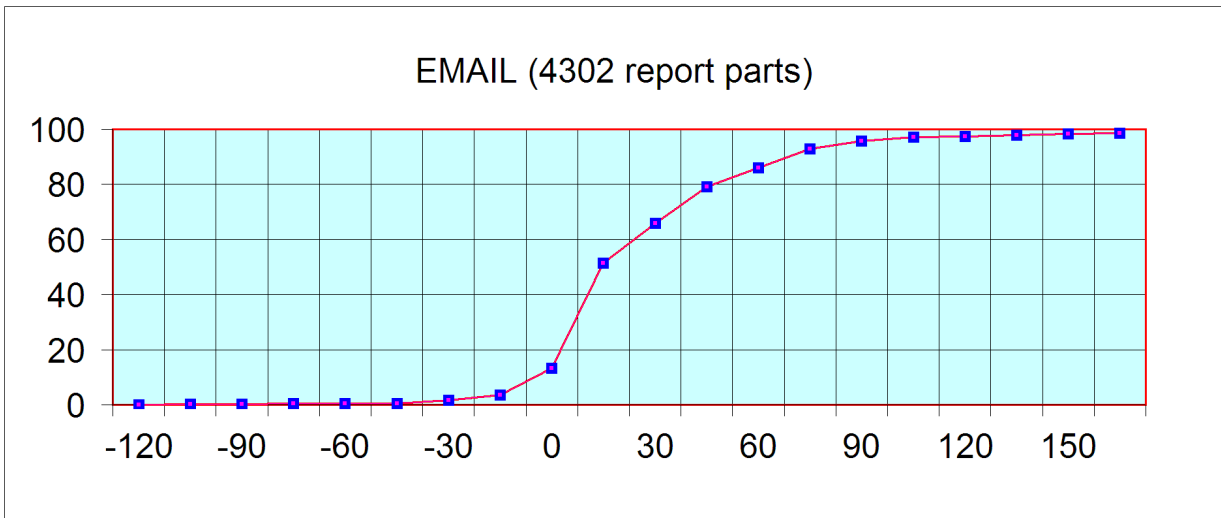
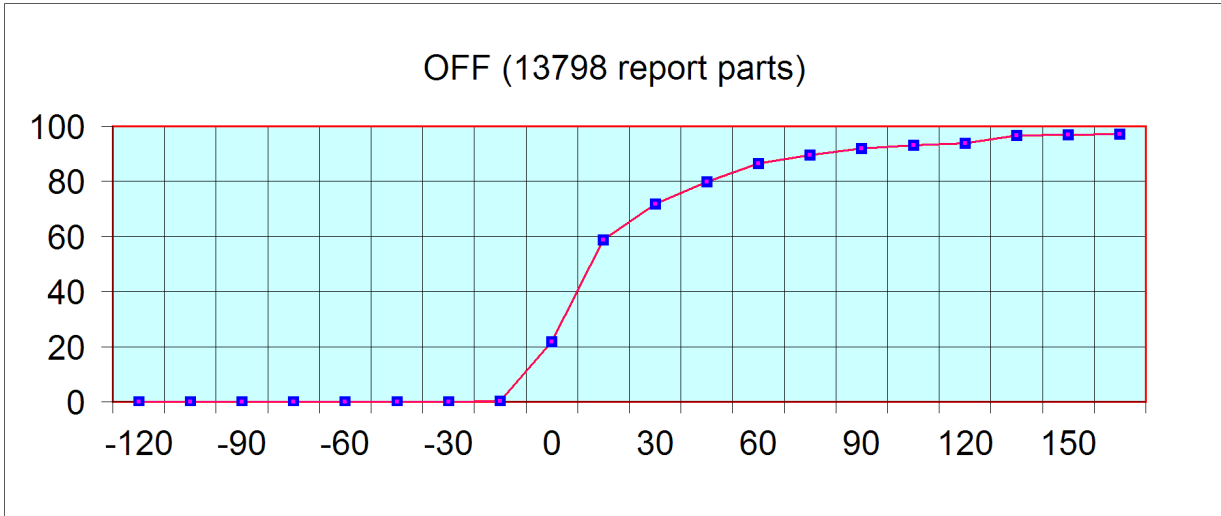
Remark: Email messages were excluded from the number of messages in error and from the relative percentage as values are regarded as not relevant. Not relevant percentages are due to not relevant values or to a total amount of data equal to zero.

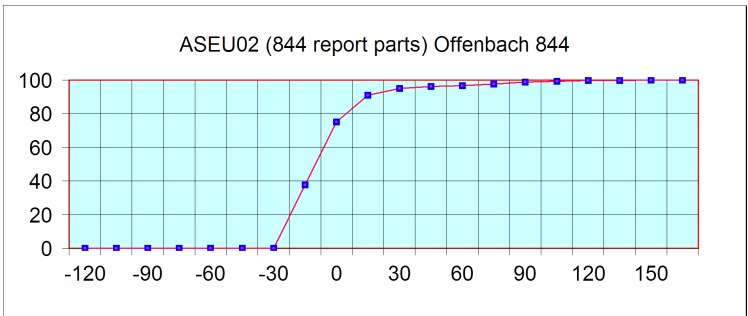
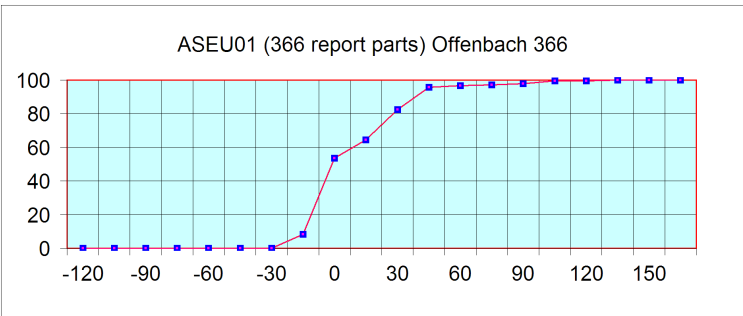
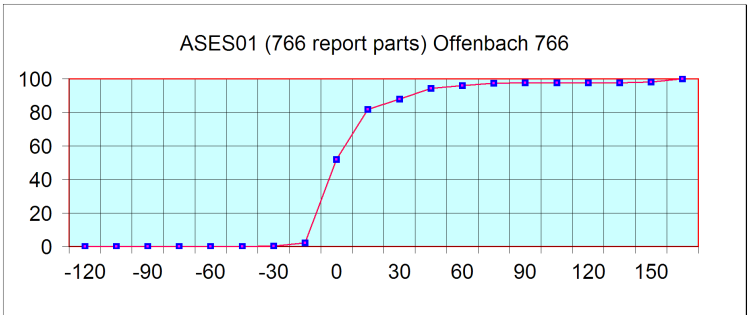
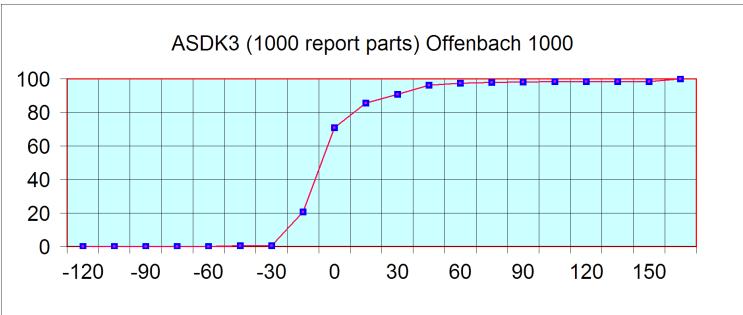
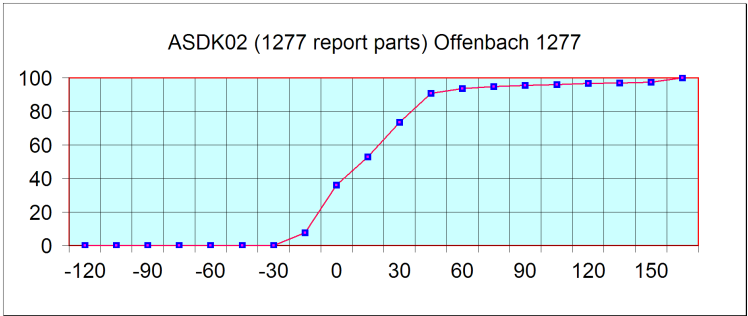
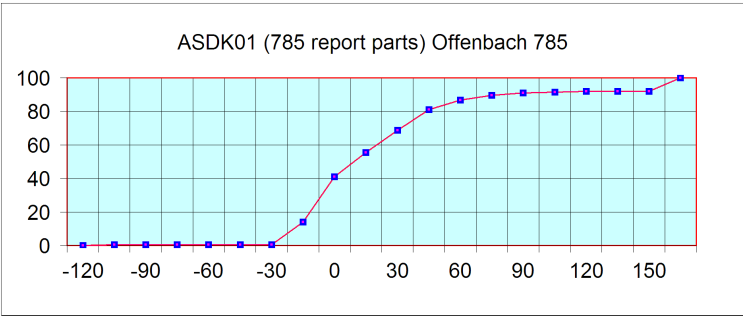
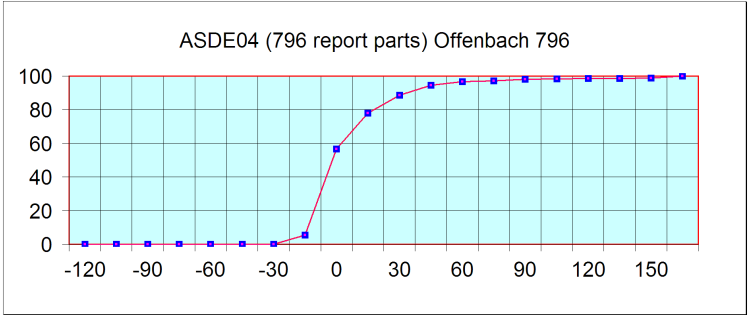
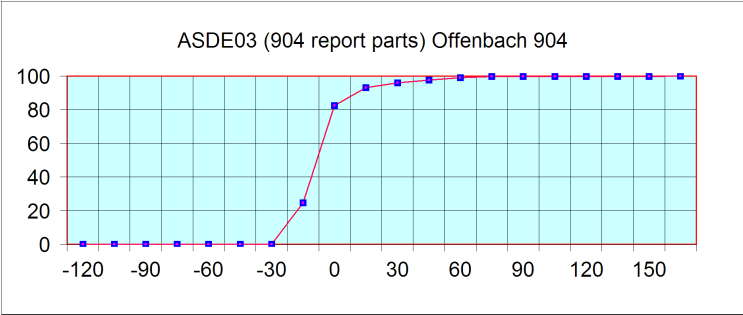
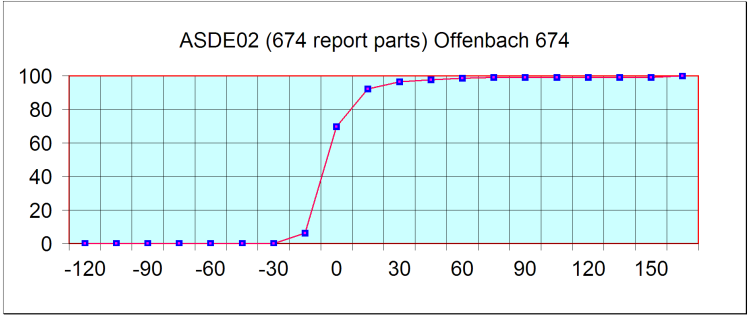
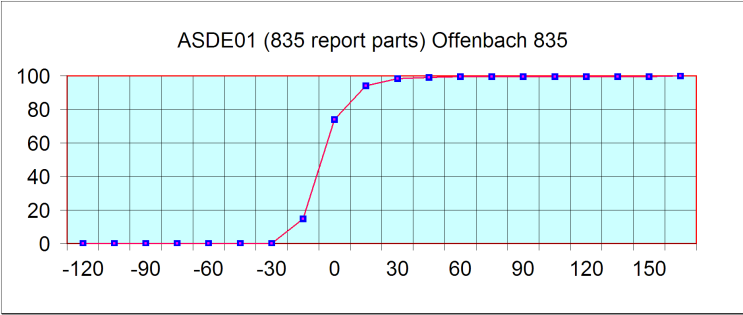
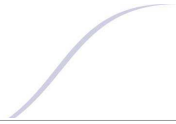
6. Global result of the syntactic check for the messages for each call sign.

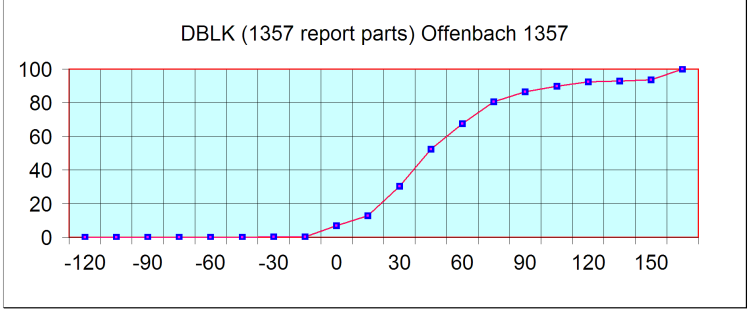
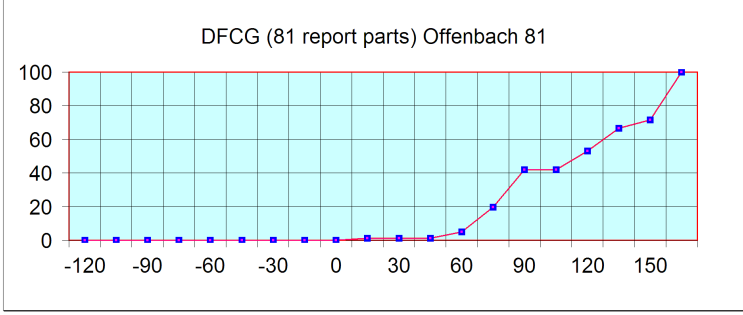
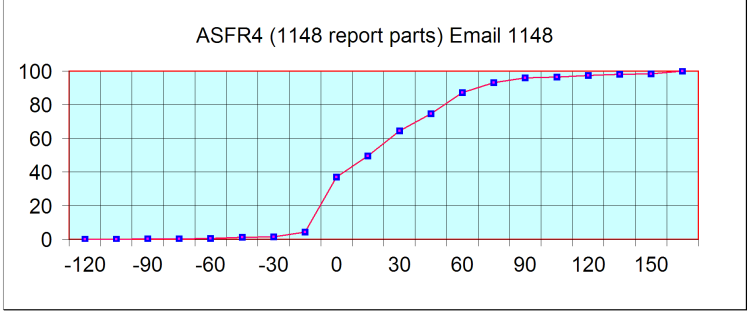
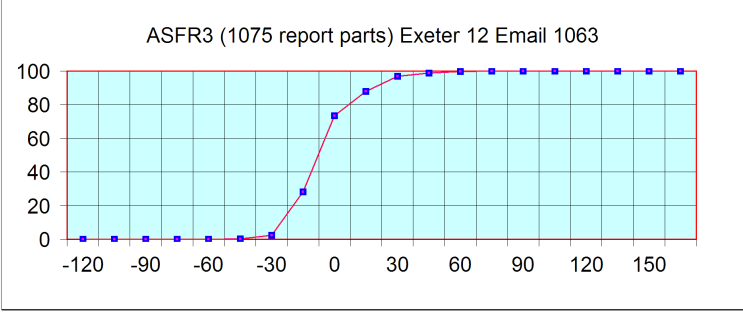
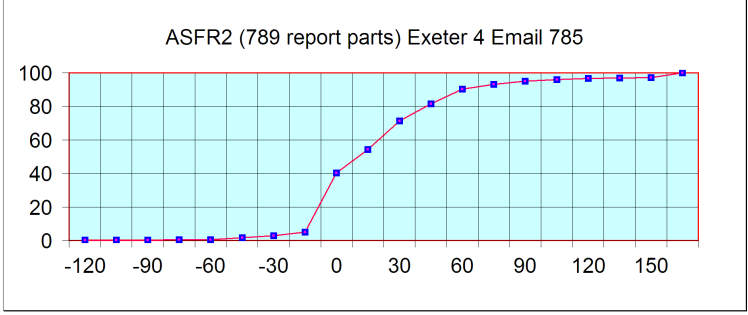
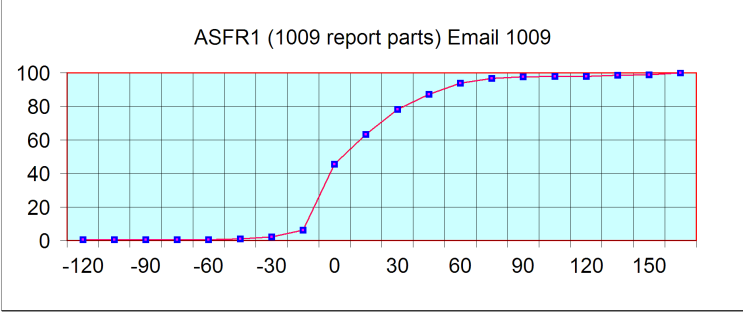
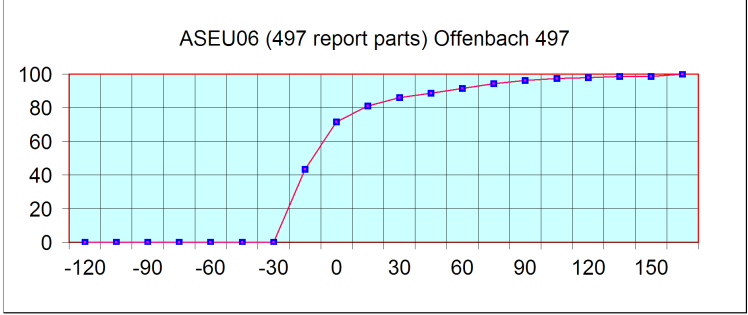
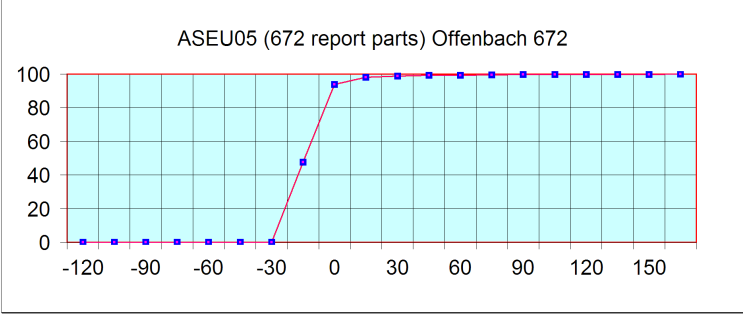
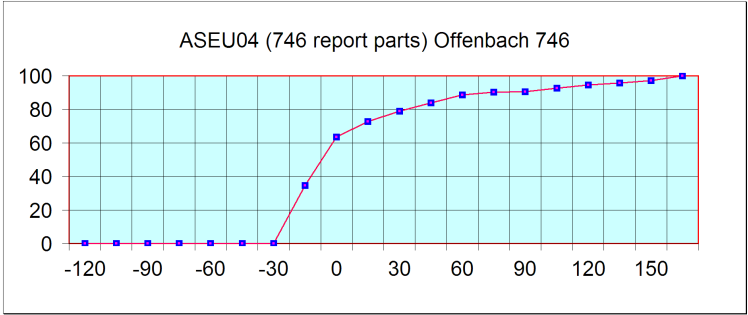
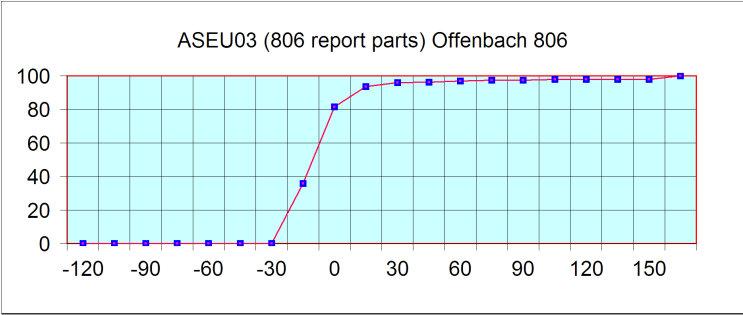
Call sign	Nb of messages received	Nb of messages in error	Percentage of messages in error	Nb of messages with operator action	Percentage of messages with operator action
ASEU01	366	0	0	0	0
ASEU02	844	0	0	0	0
ASEU03	806	0	0	0	0
ASEU04	746	0	0	0	0
ASEU05	672	0	0	0	0
ASEU06	497	0	0	0	0
ASDE01	835	0	0	0	0
ASDE02	674	0	0	0	0
ASDE03	904	0	0	0	0
ASDE04	796	0	0	0	0
DBLK	1357	0	0	0	0
DFCG	81	0	0	0	0
ASDK01	785	0	0	0	0
ASDK02	1277	0	0	0	0
ASDK3	1000	0	0	0	0
ASES01	766	0	0	0	0
ASFR1	1009	0	0	0	0
ASFR3	1075	0	0	0	0
ASFR4	1148	0	0	0	0
ASFR2	789	0	0	0	0
JGQH	479	0	0	0	0
JNSR	794	0	0	0	0
Test					
ASDE09	65	0	0	0	0
Wrong or strange call sign					
ASDK1	111	0	0	0	0
ASDK2	161	0	0	0	0
ASUK02	1274	0	0	0	0
DBLKHEADING:UKVX01	1	0	0	0	0
EGRR	6	0	0	0	0
XXXXX	1351	2	0,15	0	0
numer,	2	0	0	0	0

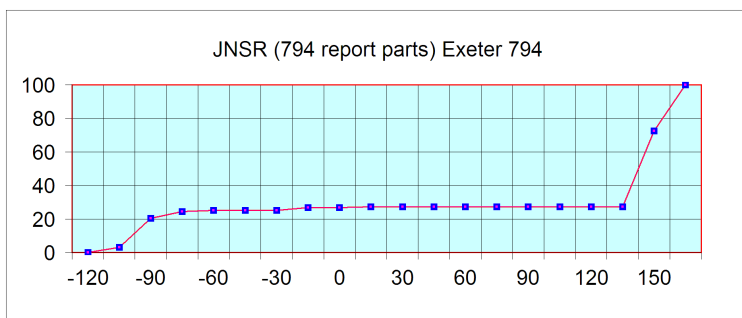
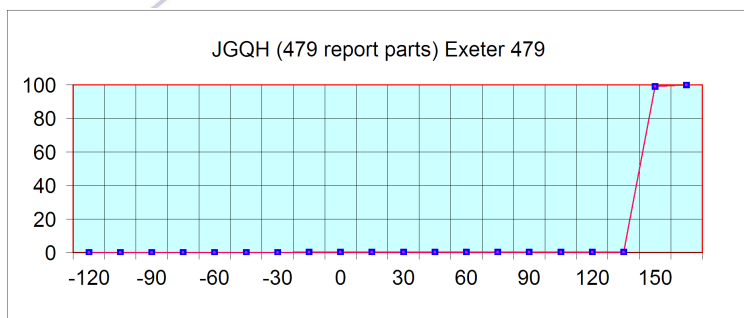
Remark: Data transmitted through email displayed an error rate close to 100% due to email syntax and were thus regarded as not relevant and excluded from errors total amount.

7. Mean time before the integration of the messages in the GTS in Toulouse. HH is the synoptic hour of reference.









During 2014, Météo-France Toulouse received 5167 upper air messages (TEMP with 4 parts) from ships. This number of messages is substantially the same compared to 2013 (5252).

Call Sign	Messages received in 2013	Messages received in 2014	Difference 2014-2013
ASEU01	722	366	-356
ASEU02	821	844	+23
ASEU03	390	806	+416
ASEU04	602	756	+154
ASEU05	948	672	-276
ASEU06	676	497	-179
ASDE01	1082	835	-247
ASDE02	624	674	+50
ASDE03	960	904	-56
ASDE04	942	796	-146
DBLK	1473	1357	-116
ASDK01	451	785	+334
ASDK02	972	1277	+305
ASDK3	1329	1000	-329
ASES01	848	766	-82
ASFR1	1036	1009	-27
ASFR2	1013	789	-224
ASFR3	953	1075	+122
ASFR4	776	1148	+372
JGQH	668	479	-189
JNSR	1928	794	-1134
JDSS	78	0	-78
Test ASDE09	199	65	-134
Wrong or strange call sign	1216	2906	+1690

The reports were received from 23 different call signs; one of them was test call sign (ASDE09). The quality of the ASAP reports was generally of a high standard, with only a small percentage of erroneous data.

Some corrupted call signs can be seen from time to time but more than in 2013 (+1690 messages).



For any comment or remark please contact Météo-France Toulouse DSO/DOA department

Frédéric Marin (frederic.marin@meteo.fr)

Hugues Jardat (hugues.jardat@meteo.fr)