

Joint WMO/IOC Technical Commission for  
Oceanography - Ship Observation Team

# **End-to-end report of the ASAP data dissemination performance October to December 2014**

## 1. Introduction

Météo-France is in charge of a end-to-end report of the ASAP data dissemination performance.

The matter of this paper is to evaluate the results of the three last months (October 2014 – December 2014).

## 2. Information available at Météo-France

TEMP-SHIP messages are received at LFPW (Toulouse) from EGRR (Exeter), EDZW (Offenbach) and Email.

The following information is available :

<b>Reception at LFPW</b>	<b>Broadcast by LFPW</b>
Call sign	Call sign
Header	Channel
Channel	Broadcast date
Reception date	Time lapse
Size	Broadcast size
Format	Recipient
Error	
Operator	

### 3. List of call signs available

<b>Country</b>	<b>Call sign</b>	<b>Country</b>	<b>Call sign</b>
Denmark	ASDK01	Japan	JCCX
	ASDK02		JGQH
	ASDK3		JIVB
E-ASAP	ASEU01		JDWX
	ASEU02		JNSR
	ASEU03		JDSS
	ASEU04	Spain	ASES01
	ASEU05	USA	WTEC
	ASEU06		
France	ASFR1		
	ASFR2		
	ASFR3		
	ASFR4		
Germany	ASDE01		
	ASDE02		
	ASDE03		
	ASDE04	Test	SHIP
	DBLK		ASDE09
	DFCG		

#### 4. Origin of the messages

Call sign	Offenbach	Exeter	Telex	Email	Mariner	Supervis	X25
ASEU02	120	0	0	0	0	0	0
ASEU03	216	0	0	0	0	0	0
ASEU04	152	0	0	0	0	0	0
ASEU05	126	0	0	0	0	0	0
ASEU06	152	0	0	0	0	0	0
ASDE01	235	0	0	0	0	0	0
ASDE02	146	0	0	0	0	0	0
ASDE03	216	0	0	0	0	0	0
ASDE04	142	0	0	0	0	0	0
DBLK	125	0	0	0	0	0	0
ASDK01	110	0	0	0	0	0	0
ASDK02	263	0	0	0	0	0	0
ASDK3	254	0	0	0	0	0	0
ASES01	146	0	0	0	0	0	0
ASFR1	0	0	0	237	0	0	0
ASFR2	0	0	0	86	0	0	0
ASFR3	0	0	0	259	0	0	0
ASFR4	0	0	0	268	0	0	0
JGQH	0	15	0	0	0	0	0
JNSR	0	117	0	0	0	0	0
Test							
ASDE09	19	0	0	0	0	0	0
Wrong or strange call sign							
ASUK02	0	12	0	0	0	0	0
DBLKHEADING:UKVX01	1	0	0	0	0	0	0
XXXXX	263	0	0	79	0	0	0
numer.	1	0	0	0	0	0	0

Mariner: French navy military sounding  
 Supervis: handled by operator

## 5. Global system performance

Month	Origin	Nb of messages received	Nb of messages in error	Percentage of messages in error	Nb of messages with operator action	Percentage of messages with operator action
2014-Oct	Offenbach	873	0	0		
	Exeter	99	0	0		
	Telex	0	not relevant	not relevant		
	Email	252	not relevant	not relevant		
	Mariner	0	not relevant	not relevant		
	X25	0	not relevant	not relevant		
	Supervis	0	0	not relevant		
	Total	1224	0	0	0	0
2014-Nov	Offenbach	875	0	0		
	Exeter	15	0	0		
	Telex	0	not relevant	not relevant		
	Email	337	not relevant	not relevant		
	Mariner	0	not relevant	not relevant		
	X25	0	not relevant	not relevant		
	Supervis	0	0	not relevant		
	Total	1227	0	0	0	0
2014-Dec	Offenbach	939	0	0		
	Exeter	30	0	0		
	Telex	0	not relevant	not relevant		
	Email	340	not relevant	not relevant		
	Mariner	0	not relevant	not relevant		
	X25	0	not relevant	not relevant		
	Supervis	0	0	not relevant		
	Total	1309	0	0	0	0
Total	Offenbach	2687	0	0		
	Exeter	144	0	0		
	Telex	0	0	not relevant		
	Email	929	3	0,32		
	Mariner	0	not relevant	not relevant		
	X25	0	not relevant	not relevant		
	Supervis	0	0	not relevant		
	Total	3760	0	0	0	0

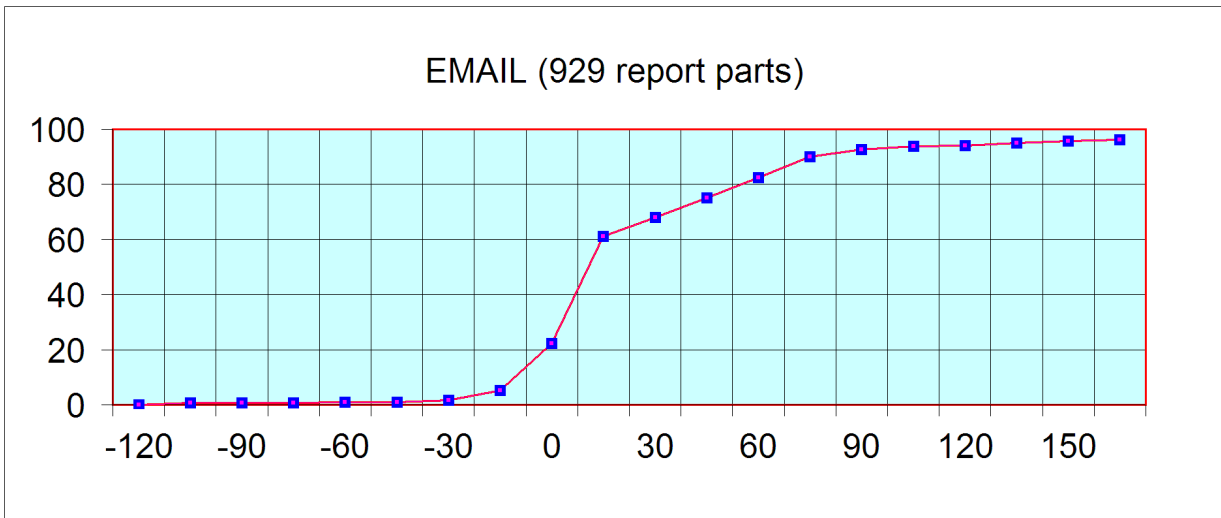
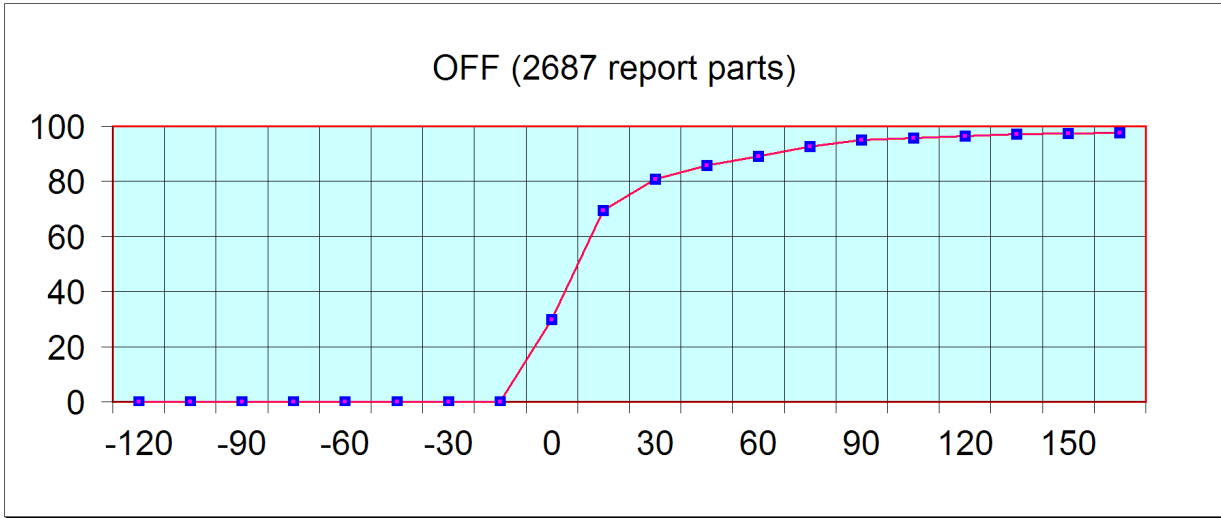
**Remark:** Email messages were excluded from the number of messages in error and from the relative percentage as values are regarded as not relevant. Not relevant percentages are due to not relevant values or to a total amount of data equal to zero.

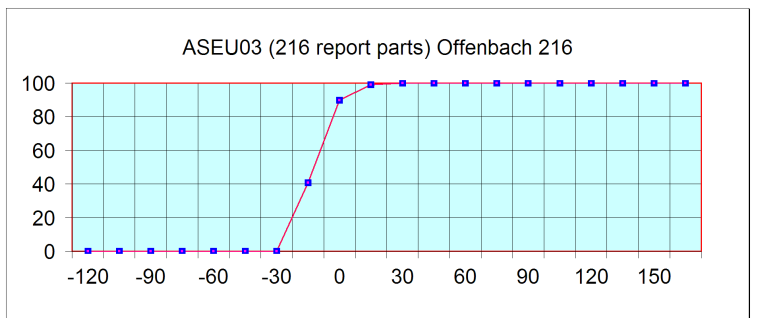
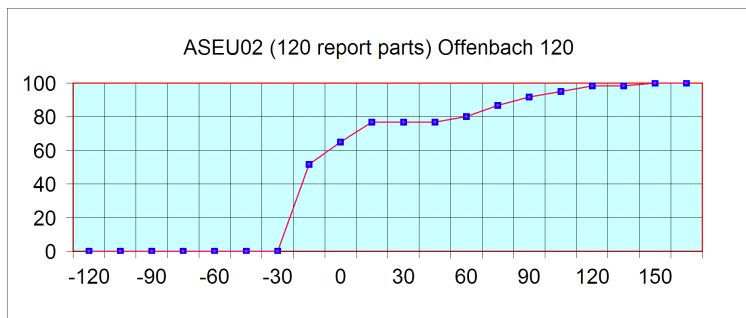
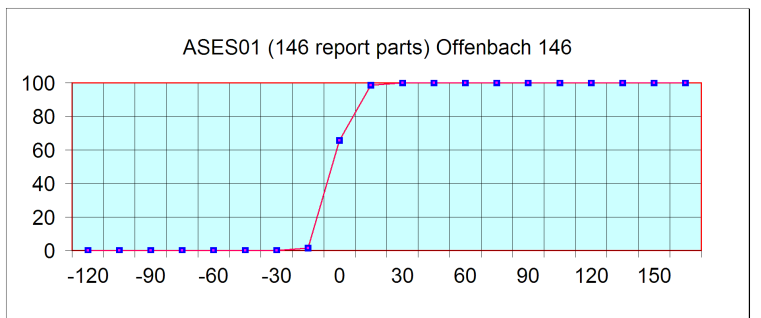
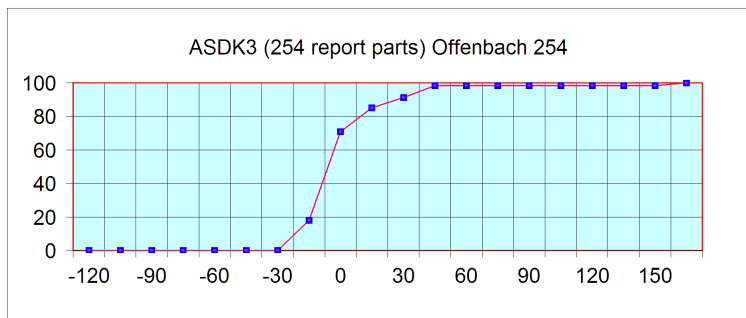
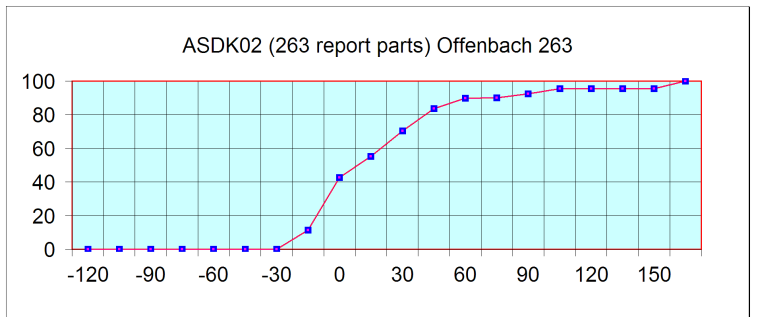
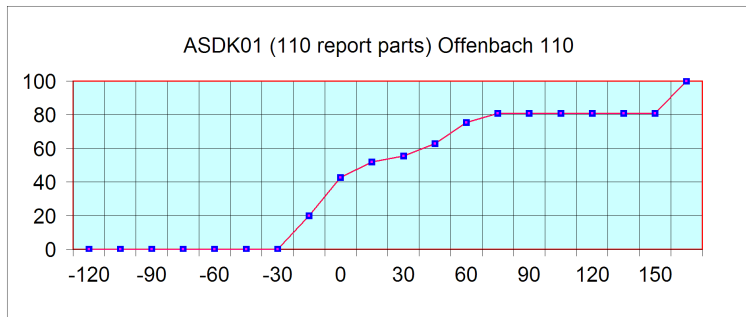
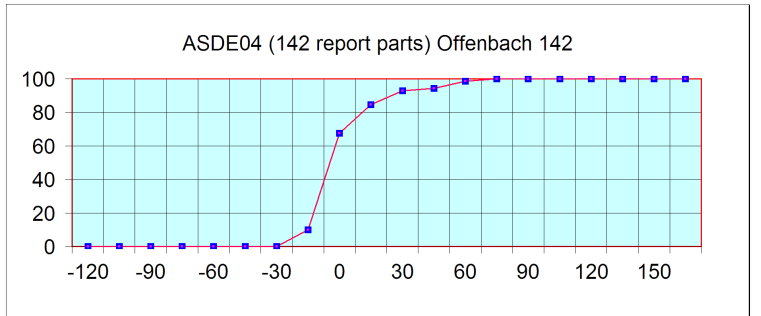
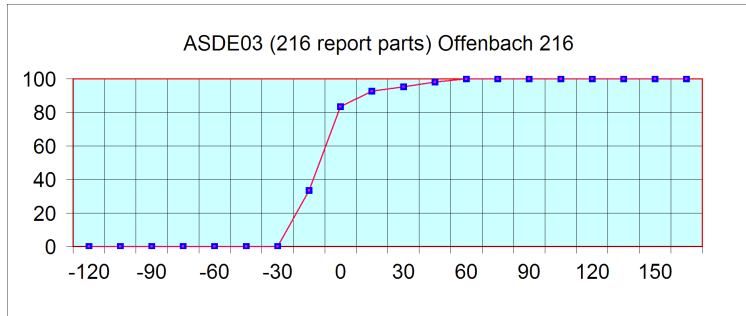
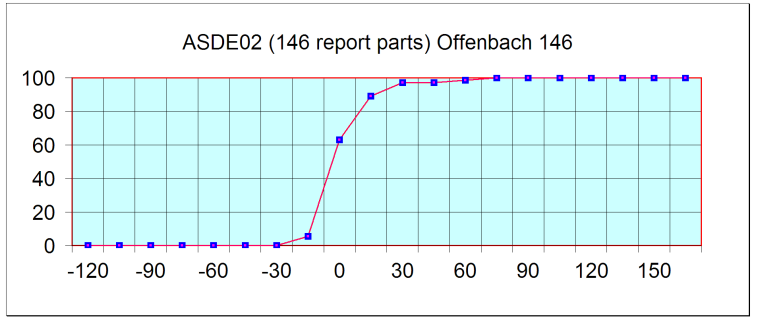
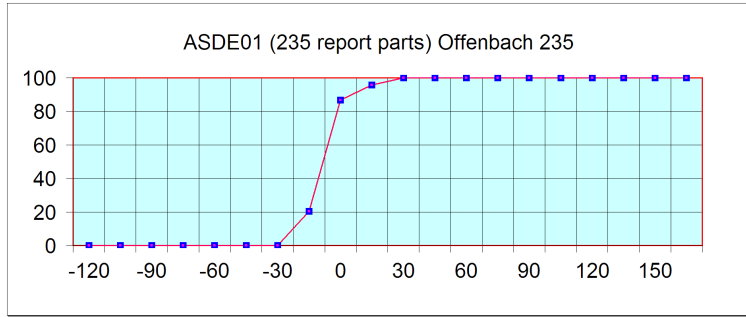
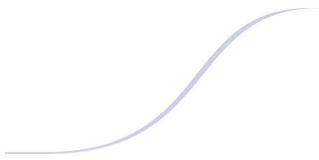
## 6. Global result of the syntactic check for the messages for each call sign.

Call sign	Nb of messages received	Nb of messages in error	Percentage of messages in error	Nb of messages with operator action	Percentage of messages with operator action
ASEU02	120	0	0	0	0
ASEU03	216	0	0	0	0
ASEU04	152	0	0	0	0
ASEU05	126	0	0	0	0
ASEU06	152	0	0	0	0
ASDE01	235	0	0	0	0
ASDE02	146	0	0	0	0
ASDE03	216	0	0	0	0
ASDE04	142	0	0	0	0
DBLK	125	0	0	0	0
ASDK01	110	0	0	0	0
ASDK02	263	0	0	0	0
ASDK3	254	0	0	0	0
ASES01	146	0	0	0	0
ASFR1	237	0	0	0	0
ASFR2	86	0	0	0	0
ASFR3	259	0	0	0	0
ASFR4	268	0	0	0	0
JGQH	15	0	0	0	0
JNSR	117	0	0	0	0
Test					
ASDE09	19	0	0	0	0
Wrong or strange call sign					
ASUK02	12	0	0	0	0
DBLKHEADING:UKVX01	1	0	0	0	0
XXXXX	342	0	0	0	0
numer,	1	0	0	0	0

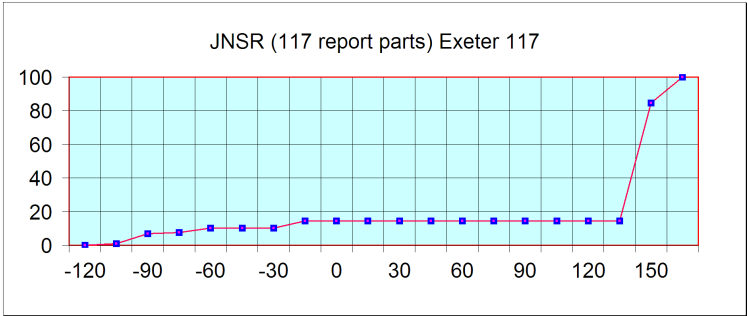
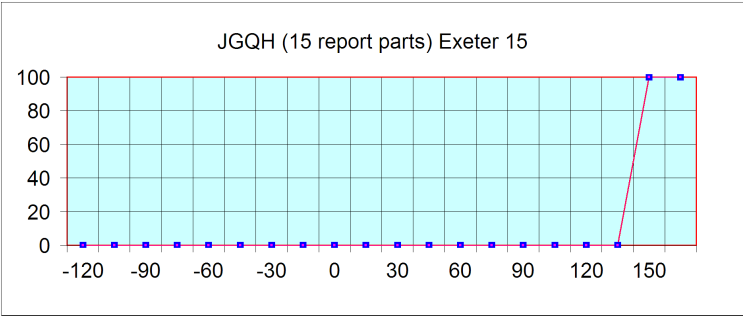
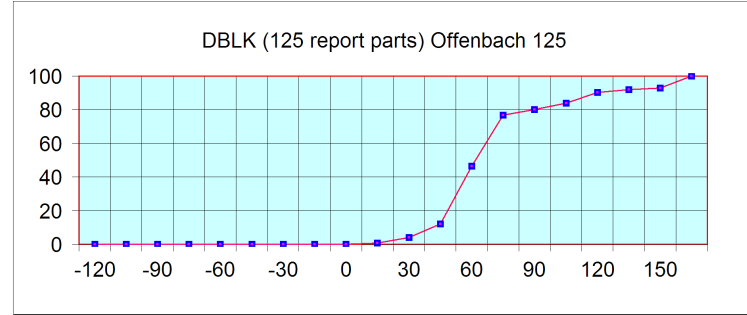
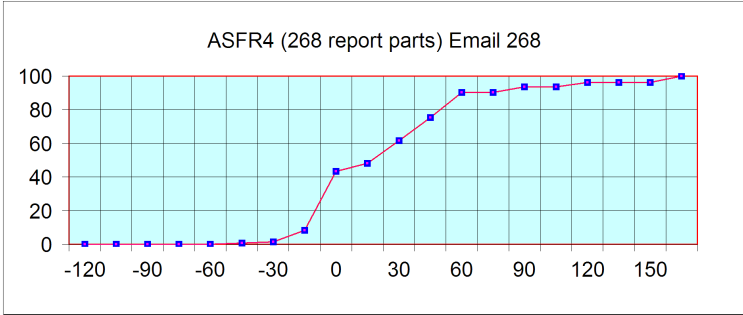
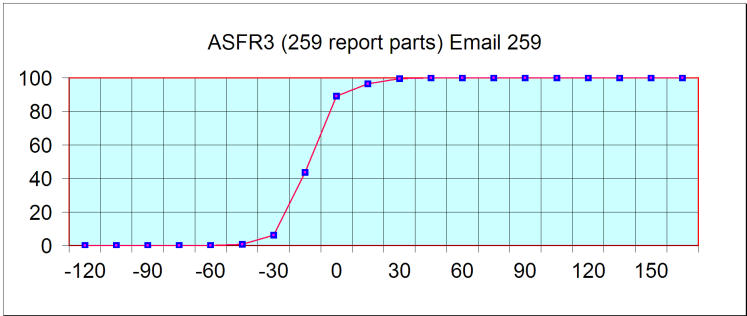
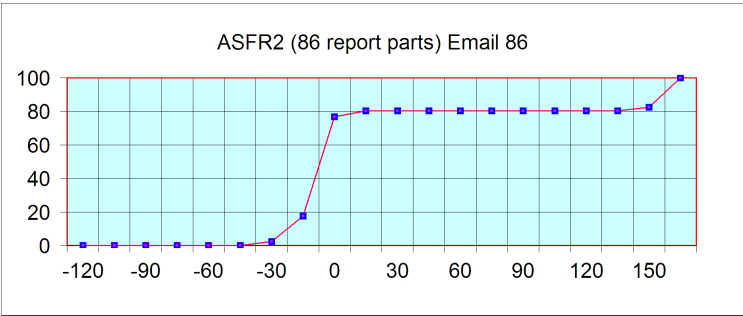
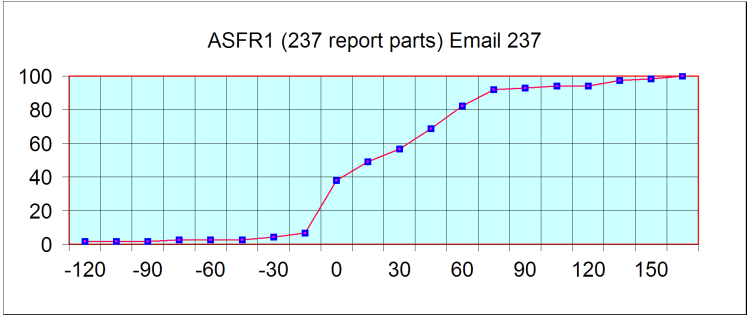
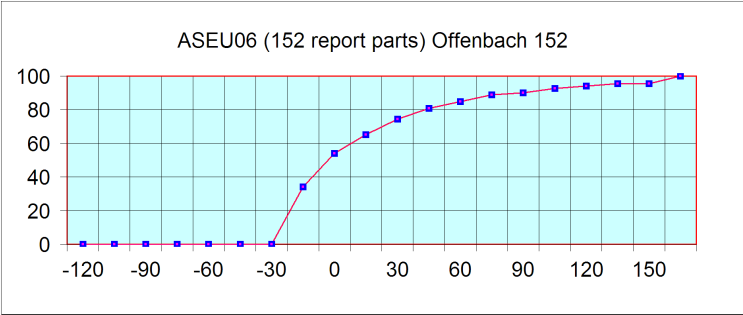
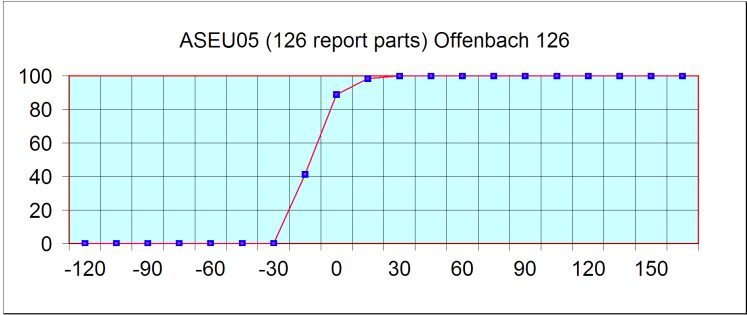
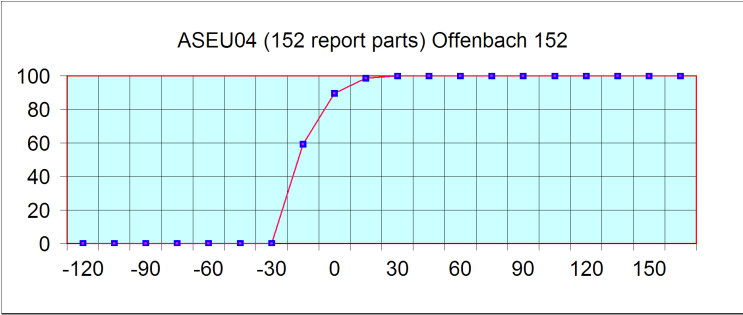
**Remark:** Data transmitted through email displayed an error rate close to 100% due to email syntax and were thus regarded as not relevant and excluded from errors total amount.

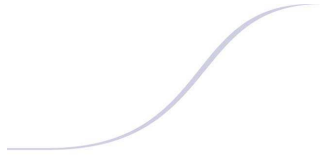
7. Mean time before the integration of the messages in the GTS in Toulouse. HH is the synoptic hour of reference.











No particular problem was noticed concerning the European ships.  
Japanese ships follow a different procedure with an important shift between the sending of the message and the synoptic hour. So, no graphic was displayed about Exeter.

For any comment or remark please contact Météo-France Toulouse DSO/DOA department

Frédéric Marin ([frederic.marin@meteo.fr](mailto:frederic.marin@meteo.fr))

Hugues Jardat ([hugues.jardat@meteo.fr](mailto:hugues.jardat@meteo.fr))