

Joint WMO/IOC Technical Commission for
Oceanography - Ship Observation Team

**End-to-end report of the
ASAP data dissemination
performance
July to September
2014**

1. Introduction

Météo-France is in charge of a end-to-end report of the ASAP data dissemination performance.

The matter of this paper is to evaluate the results of the three last months (July 2014 – September 2014).

2. Information available at Météo-France

TEMP-SHIP messages are received at LFPW (Toulouse) from EGRR (Exeter), EDZW (Offenbach) and Email.

The following information is available :

Reception at LFPW	Broadcast by LFPW
Call sign	Call sign
Header	Channel
Channel	Broadcast date
Reception date	Time lapse
Size	Broadcast size
Format	Recipient
Error	
Operator	

3. List of call signs available

Country	Call sign	Country	Call sign
Denmark	ASDK01	Japan	JCCX
	ASDK02		JGQH
	ASDK3		JIVB
E-ASAP	ASEU01		JDWX
	ASEU02		JNSR
	ASEU03		JDSS
	ASEU04	Spain	ASES01
	ASEU05	USA	WTEC
	ASEU06		
France	ASFR1		
	ASFR2		
	ASFR3		
	ASFR4		
Germany	ASDE01		
	ASDE02		
	ASDE03		
	ASDE04	Test	SHIP
	DBLK		ASDE09
	DFCG		

4. Origin of the messages

Call sign	Offenbach	Exeter	Telex	Email	Mariner	Supervis	X25
ASEU01	40	0	0	0	0	0	0
ASEU02	290	0	0	0	0	0	0
ASEU03	188	0	0	0	0	0	0
ASEU04	200	0	0	0	0	0	0
ASEU05	178	0	0	0	0	0	0
ASEU06	133	0	0	0	0	0	0
ASDE01	274	0	0	0	0	0	0
ASDE02	248	0	0	0	0	0	0
ASDE03	246	0	0	0	0	0	0
ASDE04	230	0	0	0	0	0	0
DBLK	526	0	0	0	0	0	0
DFCG	81	0	0	0	0	0	0
ASDK01	303	0	0	0	0	0	0
ASDK02	450	0	0	0	0	0	0
ASDK3	202	0	0	0	0	0	0
ASES01	260	0	0	0	0	0	0
ASFR1	0	0	0	294	0	0	0
ASFR2	0	4	0	223	0	0	0
ASFR3	0	12	0	301	0	0	0
ASFR4	0	0	0	320	0	0	0
ASUK02	0	1262	0	0	0	0	0
JGQH	0	163	0	0	0	0	0
JNSR	0	673	0	0	0	0	0
Test							
ASDE09	12	0	0	0	0	0	0
Wrong or strange call sign							
XXXXX	187	1	0	80	0	0	0
numer.	0	1	0	0	0	0	0

Mariner: French navy military sounding

Supervis: handled by operator

5. Global system performance

Month	Origin	Nb of messages recieved	Nb of messages in error	Percentage of messages in error	Nb of messages with operator action	Percentage of messages with operator action
2014-Jul	Offenbach	1443	0	0		
	Exeter	447	0	0		
	Telex	0	not relevant	not relevant		
	Email	412	not relevant	not relevant		
	Mariner	0	not relevant	not relevant		
	X25	0	not relevant	not relevant		
	Supervis	0	0	not relevant		
	Total	2302	0	0	0	0
2014-Aug	Offenbach	1300	0	0		
	Exeter	549	0	0		
	Telex	0	not relevant	not relevant		
	Email	426	not relevant	not relevant		
	Mariner	0	not relevant	not relevant		
	X25	0	not relevant	not relevant		
	Supervis	0	0	not relevant		
	Total	2275	0	0	0	0
2014-Sep	Offenbach	1305	0	0		
	Exeter	1126	0	0		
	Telex	0	not relevant	not relevant		
	Email	380	not relevant	not relevant		
	Mariner	0	not relevant	not relevant		
	X25	0	not relevant	not relevant		
	Supervis	0	0	not relevant		
	Total	2811	0	0	0	0
Total	Offenbach	4048	0	0		
	Exeter	2122	0	0		
	Telex	0	0	not relevant		
	Email	1218	4	0,33		
	Mariner	0	not relevant	not relevant		
	X25	0	not relevant	not relevant		
	Supervis	0	0	not relevant		
	Total	7388	0	0	0	0

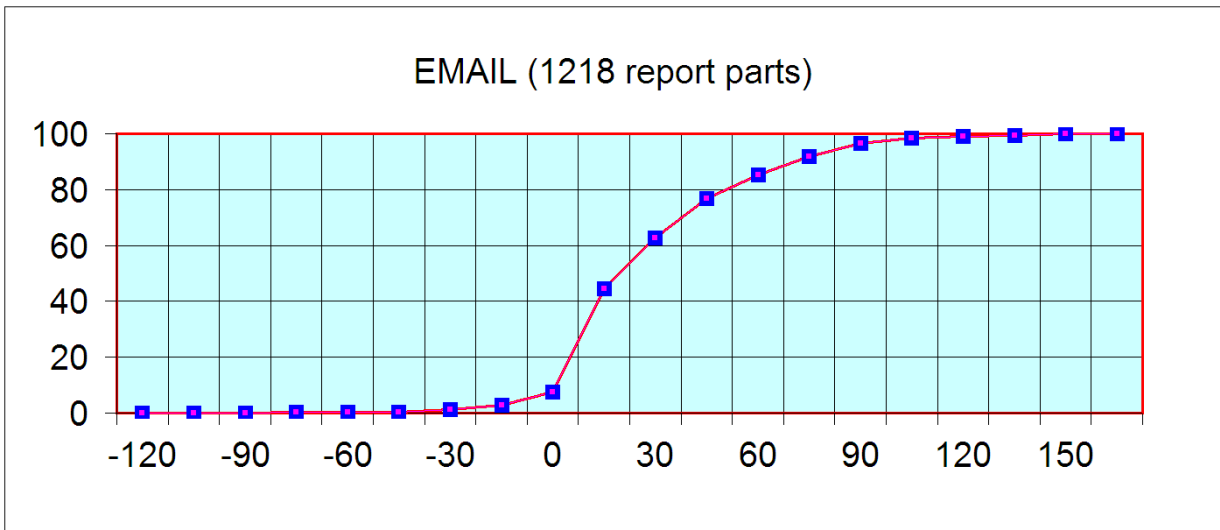
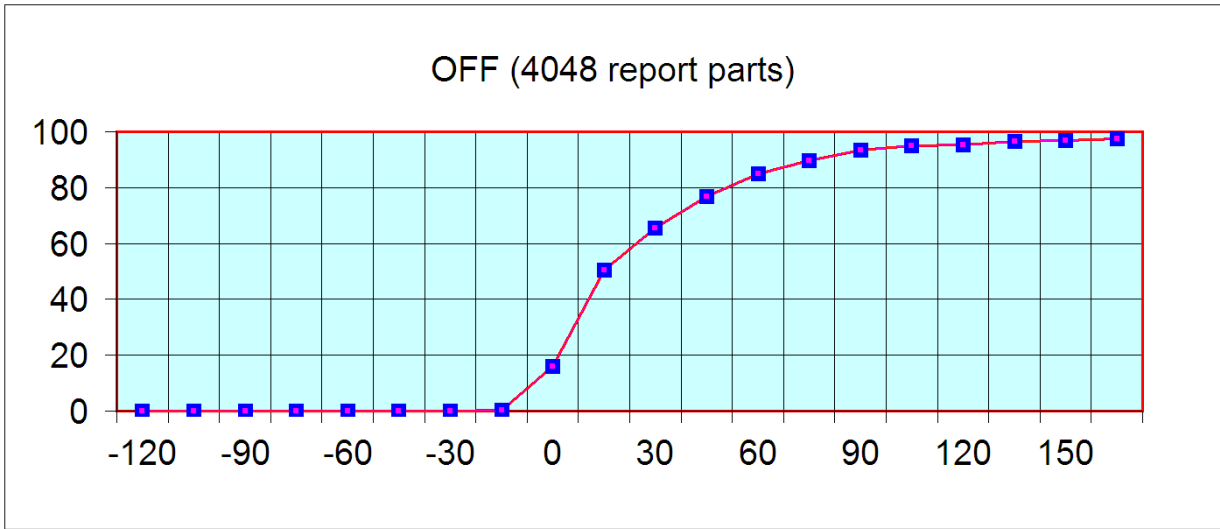
Remark: Email messages were excluded from the number of messages in error and from the relative percentage as values are regarded as not relevant. Not relevant percentages are due to not relevant values or to a total amount of data equal to zero.

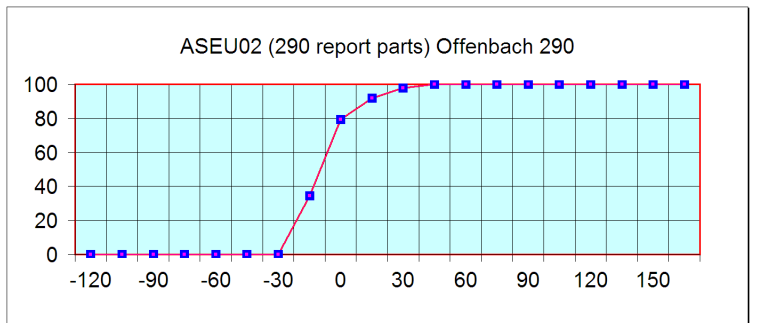
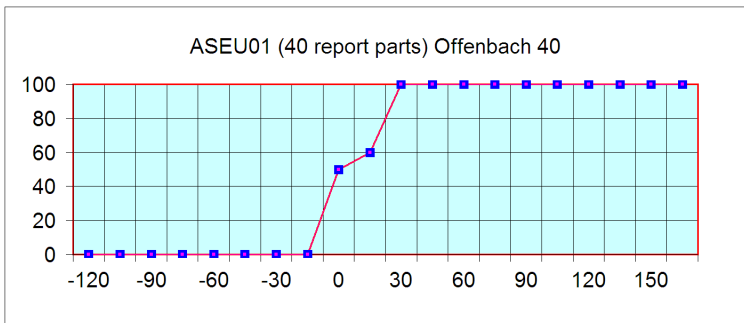
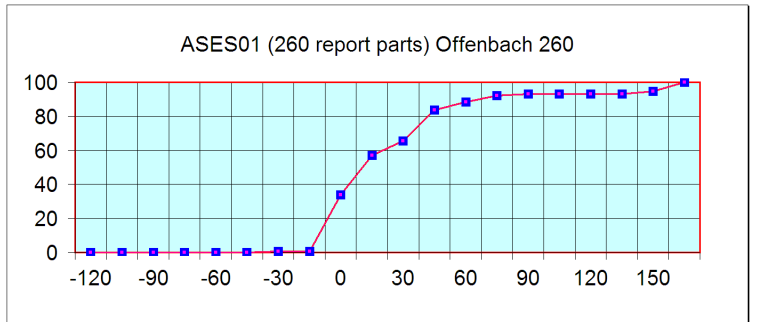
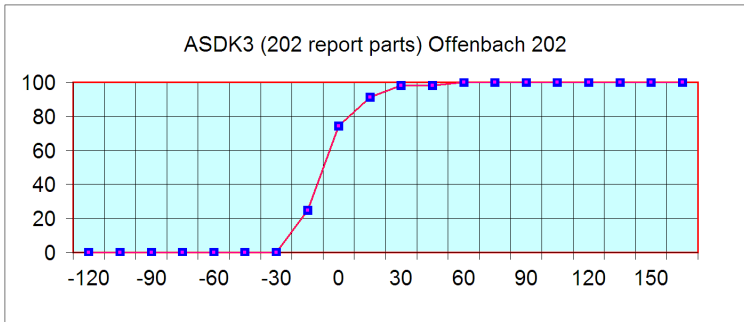
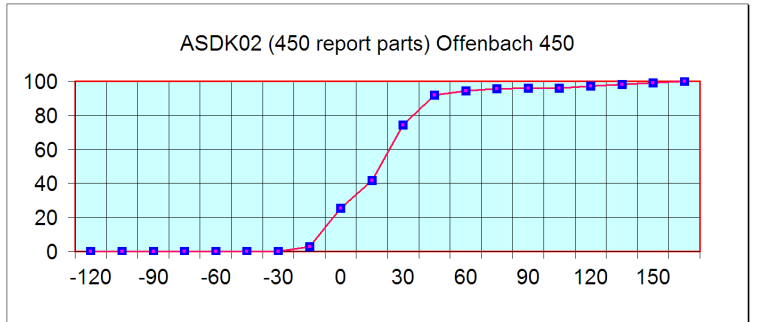
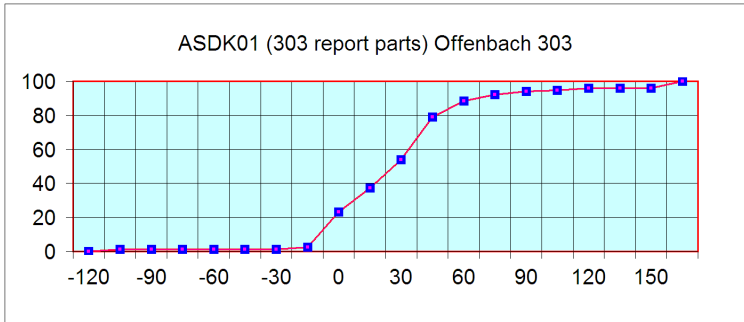
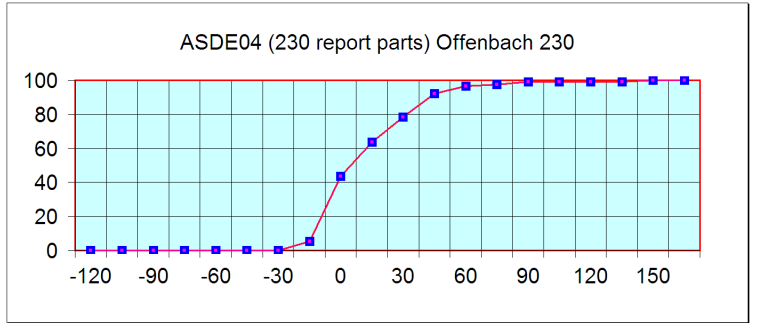
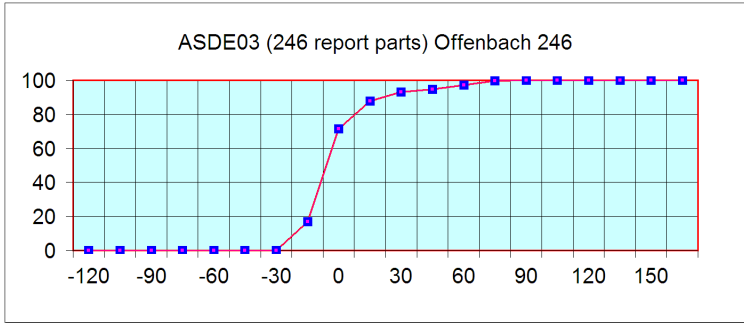
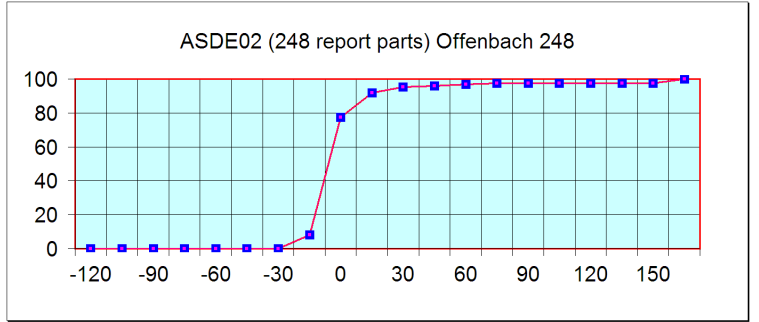
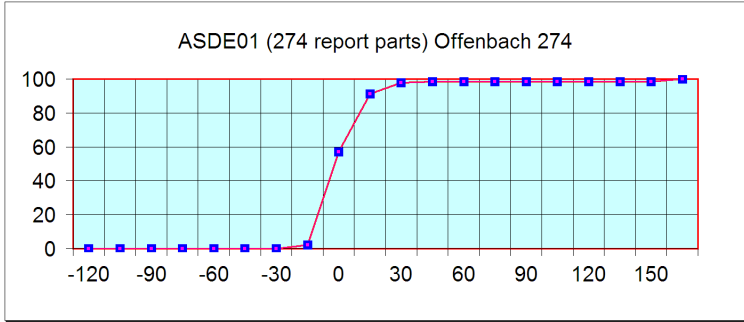
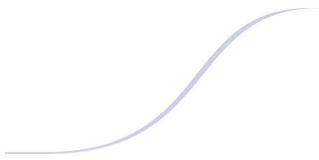
6. Global result of the syntactic check for the messages for each call sign.

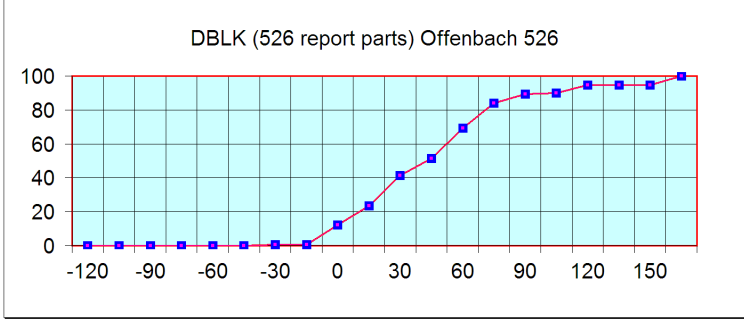
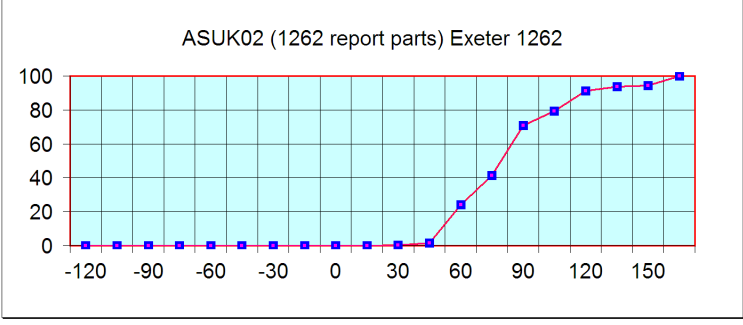
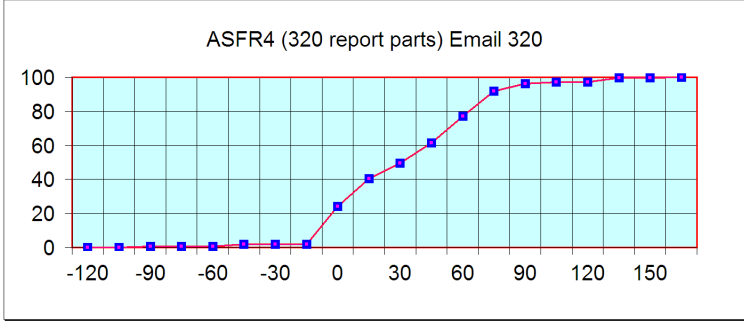
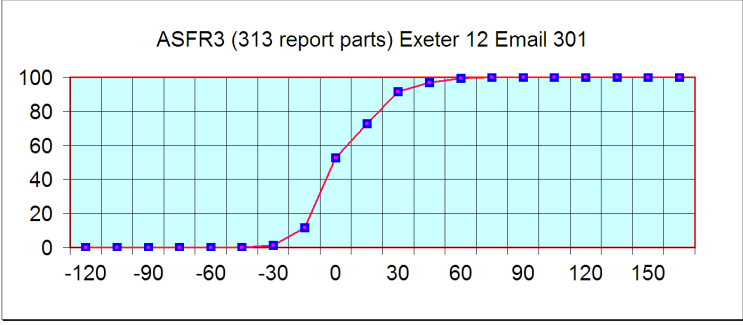
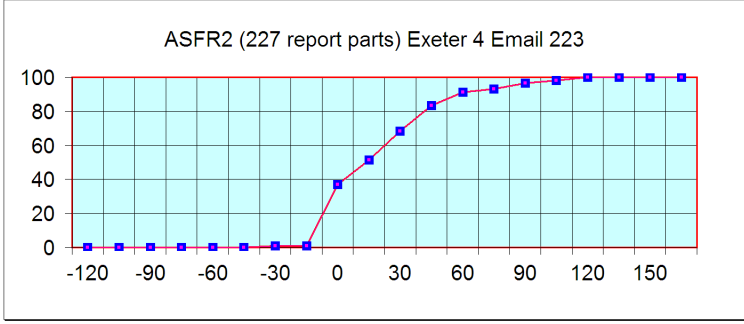
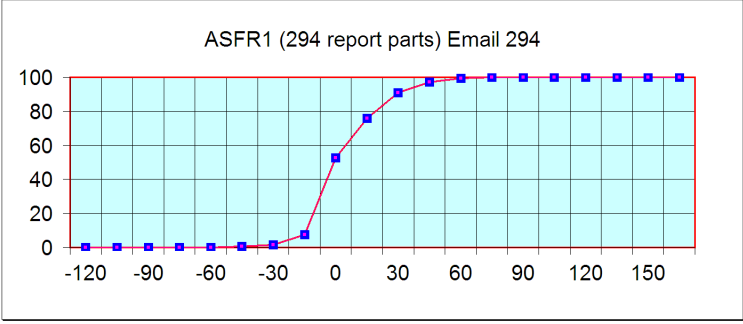
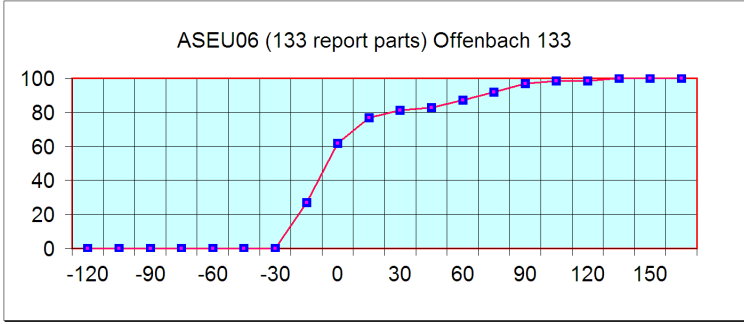
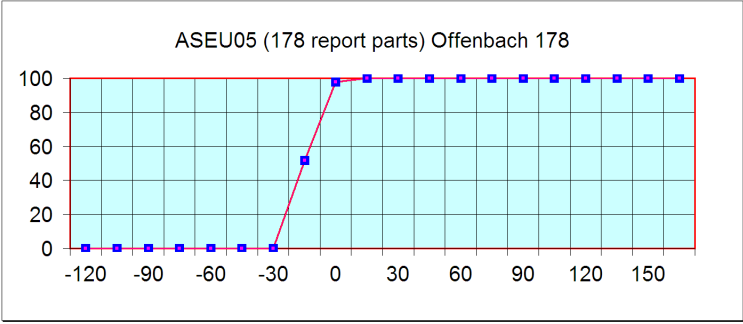
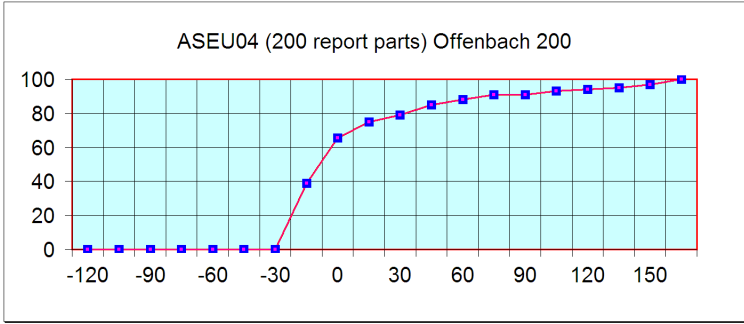
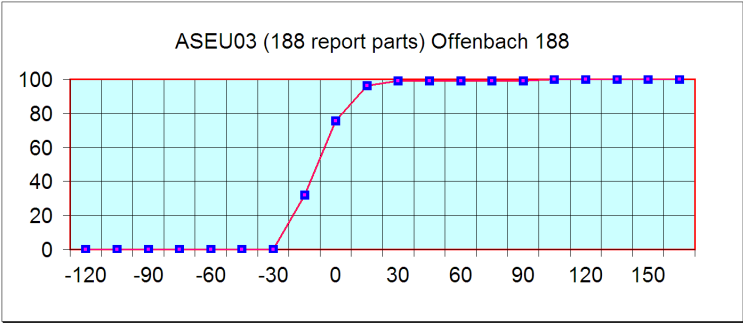
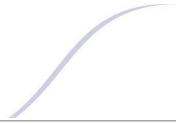
Call sign	Nb of messages received	Nb of messages in error	Percentage of messages in error	Nb of messages with operator action	Percentage of messages with operator action
ASEU01	40	0	0	0	0
ASEU02	290	0	0	0	0
ASEU03	188	0	0	0	0
ASEU04	200	0	0	0	0
ASEU05	178	0	0	0	0
ASEU06	133	0	0	0	0
ASDE01	274	0	0	0	0
ASDE02	248	0	0	0	0
ASDE03	246	0	0	0	0
ASDE04	230	0	0	0	0
DBLK	526	0	0	0	0
DFCG	81	0	0	0	0
ASDK01	303	0	0	0	0
ASDK02	450	0	0	0	0
ASDK3	202	0	0	0	0
ASES01	260	0	0	0	0
ASFR1	294	0	0	0	0
ASFR2	227	0	0	0	0
ASFR3	313	0	0	0	0
ASFR4	320	0	0	0	0
ASUK02	1262	0	0	0	0
JGQH	163	0	0	0	0
JNSR	673	0	0	0	0
Test					
ASDE09	12	0	0	0	0
Wrong or strange call sign					
XXXXX	268	0	0	0	0
numer,	1	0	0	0	0

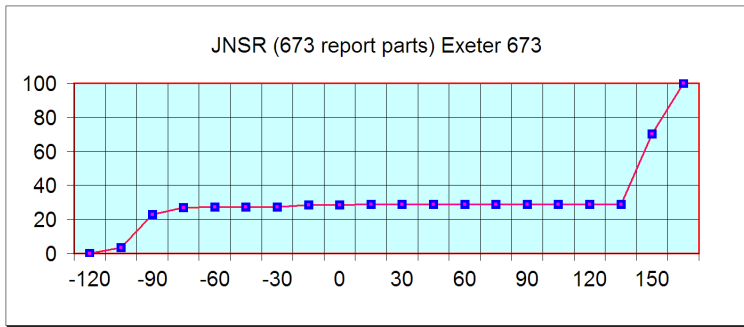
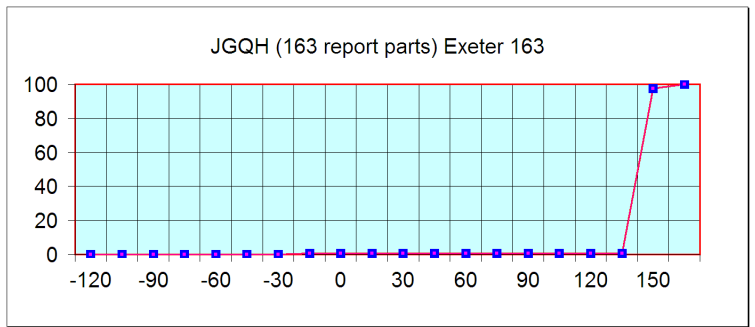
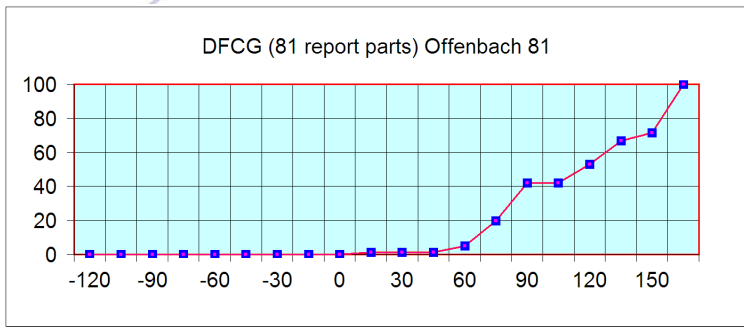
Remark: Data transmitted through email displayed an error rate close to 100% due to email syntax and were thus regarded as not relevant and excluded from errors total amount.

7. Mean time before the integration of the messages in the GTS in Toulouse. HH is the synoptic hour of reference.









No particular problem was noticed concerning the European ships. DBLK and DFCG (German Research Vessel) transmitted some messages with delay but we have no information about the sounding operations on board (launch time...) Japanese ships follow a different procedure with an important shift between the sending of the message and the synoptic hour. So, no graphic was displayed about Exeter.

For any comment or remark please contact Météo-France Toulouse DSO/DOA department

Frédéric Marin (frederic.marin@meteo.fr)
Hugues Jardat (hugues.jardat@meteo.fr)