

Joint WMO/IOC Technical Commission for
Oceanography - Ship Observation Team

End-to-end report of the ASAP data dissemination performance April to June 2014

1. Introduction

Météo-France is in charge of a end-to-end report of the ASAP data dissemination performance.

The matter of this paper is to evaluate the results of the three last months (April 2014 – June 2014).

2. Information available at Météo-France

TEMP-SHIP messages are received at LFPW (Toulouse) from EGRR (Exeter), EDZW (Offenbach) and Email.

The following information is available :

Reception at LFPW	Broadcast by LFPW
Call sign	Call sign
Header	Channel
Channel	Broadcast date
Reception date	Time lapse
Size	Broadcast size
Format	Recipient
Error	
Operator	

3. List of call signs available

Country	Call sign	Country	Call sign
Denmark	ASDK01	Japan	JCCX
	ASDK02		JGQH
	ASDK3		JIVB
E-ASAP	ASEU01		JDWX
	ASEU02		JNSR
	ASEU03		JDSS
	ASEU04	Spain	ASES01
	ASEU05	USA	WTEC
	ASEU06		
France	ASFR1		
	ASFR2		
	ASFR3		
	ASFR4		
Germany	ASDE01		
	ASDE02		
	ASDE03		
	ASDE04	Test	SHIP
	DBLK		ASDE09
	DFCG		

4. Origin of the messages

Call sign	Offenbach	Exeter	Telex	Email	Mariner	Supervis	X25
ASEU01	228	0	0	0	0	0	0
ASEU02	288	0	0	0	0	0	0
ASEU03	246	0	0	0	0	0	0
ASEU04	210	0	0	0	0	0	0
ASEU05	200	0	0	0	0	0	0
ASEU06	98	0	0	0	0	0	0
ASDE01	152	0	0	0	0	0	0
ASDE02	140	0	0	0	0	0	0
ASDE03	300	0	0	0	0	0	0
ASDE04	240	0	0	0	0	0	0
DBLK	217	0	0	0	0	0	0
ASDK01	206	0	0	0	0	0	0
ASDK02	352	0	0	0	0	0	0
ASDK2	4	0	0	0	0	0	0
ASDK3	236	0	0	0	0	0	0
ASES01	192	0	0	0	0	0	0
ASFR1	0	0	0	242	0	0	0
ASFR2	0	0	0	260	0	0	0
ASFR3	0	0	0	318	0	0	0
ASFR4	0	0	0	277	0	0	0
JGQH	0	77	0	0	0	0	0
JNSR	0	4	0	0	0	0	0
Test							
ASDE09	12	0	0	0	0	0	0
Wrong or strange call sign							
XXXXX	186	0	0	68	0	0	0

Mariner: French navy military sounding
 Supervis: handled by operator

5. Global system performance

Month	Origin	Nb of messages received	Nb of messages in error	Percentage of messages in error	Nb of messages with operator action	Percentage of messages with operator action
2014-Apr	Offenbach	1114	0	0		
	Exeter	0	0	0		
	Telex	0	not relevant	not relevant		
	Email	376	not relevant	not relevant		
	Mariner	0	not relevant	not relevant		
	X25	0	not relevant	not relevant		
	Supervis	0	0	not relevant		
	Total	1490	0	0	0	0
2014-May	Offenbach	1106	2	0,18		
	Exeter	69	0	0		
	Telex	0	not relevant	not relevant		
	Email	400	not relevant	not relevant		
	Mariner	0	not relevant	not relevant		
	X25	0	not relevant	not relevant		
	Supervis	0	0	not relevant		
	Total	1575	2	0,17	0	0
2014-Jun	Offenbach	1287	0	0		
	Exeter	12	0	0		
	Telex	0	not relevant	not relevant		
	Email	389	not relevant	not relevant		
	Mariner	0	not relevant	not relevant		
	X25	0	not relevant	not relevant		
	Supervis	0	0	not relevant		
	Total	1688	0	0	0	0
Total	Offenbach	3507	2	0,06		
	Exeter	81	0	0		
	Telex	0	0	not relevant		
	Email	1165	1	0,09		
	Mariner	0	not relevant	not relevant		
	X25	0	not relevant	not relevant		
	Supervis	0	0	not relevant		
	Total	4753	2	0,06	0	0

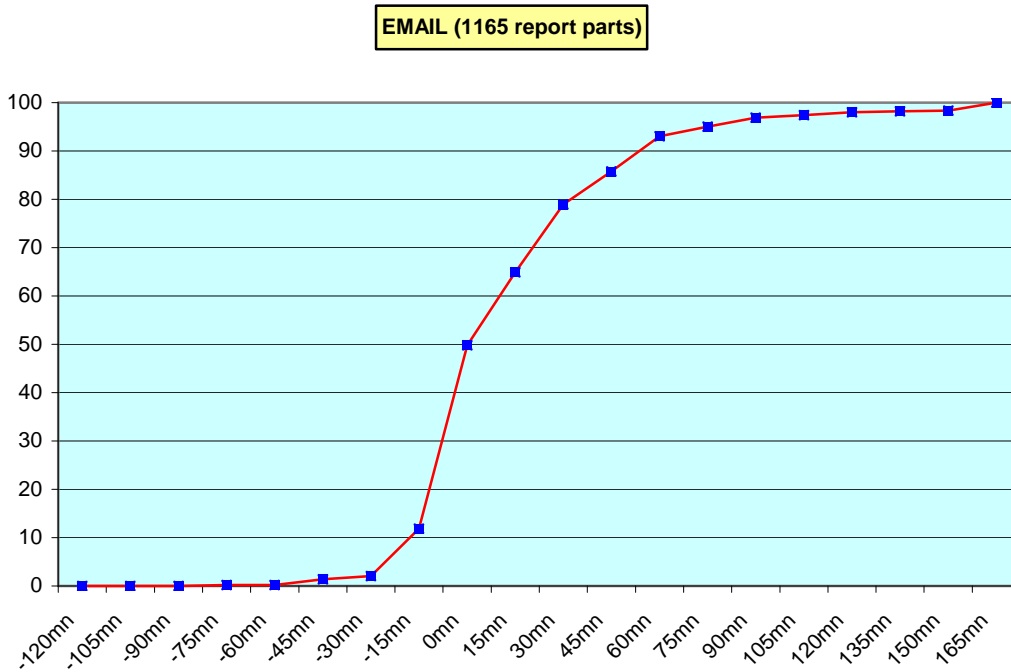
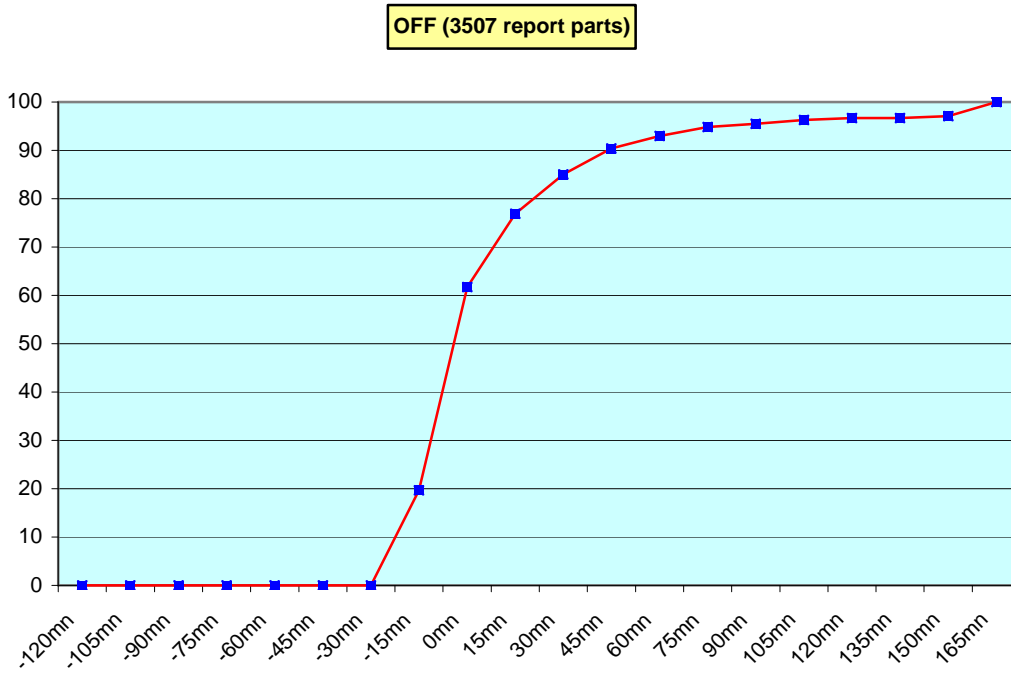
Remark: Email messages were excluded from the number of messages in error and from the relative percentage as values are regarded as not relevant. Not relevant percentages are due to not relevant values or to a total amount of data equal to zero.

6. Global result of the syntactic check for the messages for each call sign.

Call sign	Nb of messages recieved	Nb of messages in error	Percentage of messages in error	Nb of messages with operator action	Percentage of messages with operator action
ASEU01	228	0	0	0	0
ASEU02	288	0	0	0	0
ASEU03	246	0	0	0	0
ASEU04	210	0	0	0	0
ASEU05	200	0	0	0	0
ASEU06	98	0	0	0	0
ASDE01	152	0	0	0	0
ASDE02	140	0	0	0	0
ASDE03	300	0	0	0	0
ASDE04	240	0	0	0	0
DBLK	217	0	0	0	0
ASDK01	206	0	0	0	0
ASDK02	352	0	0	0	0
ASDK2	4	0	0	0	0
ASDK3	236	0	0	0	0
ASES01	192	0	0	0	0
ASFR1	242	0	0	0	0
ASFR2	260	0	0	0	0
ASFR3	318	0	0	0	0
ASFR4	277	0	0	0	0
JGQH	77	0	0	0	0
JNSR	4	0	0	0	0
Test					
ASDE09	12	0	0	0	0
Wrong or strande call sign					
XXXXX	254	2	0,79	0	0

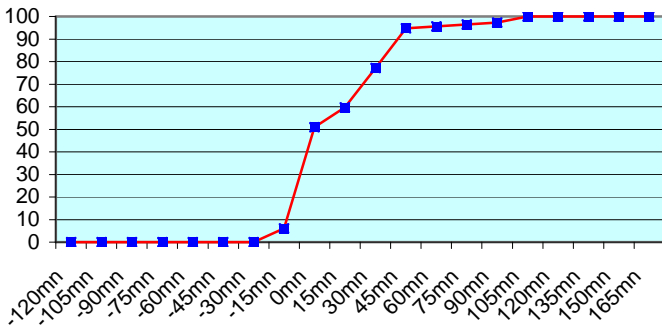
Remark: Data transmitted through email displayed an error rate close to 100% due to email syntax and were thus regarded as not relevant and excluded from errors total amount.

7. Mean time before the integration of the messages in the GTS in Toulouse. HH is the synoptic hour of reference.

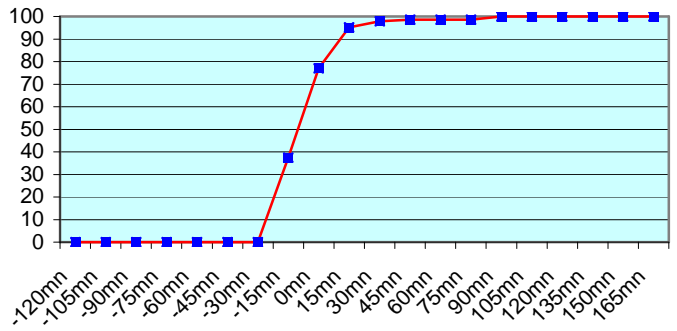




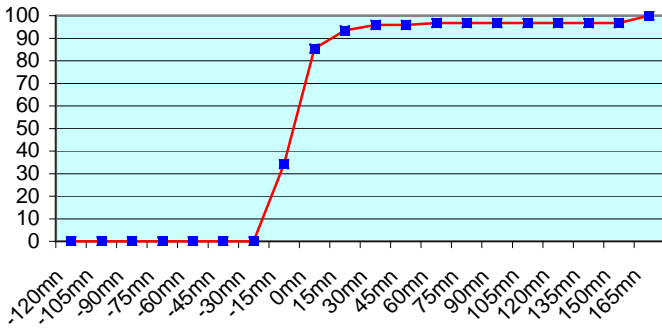
ASEU01 (228 report parts) Offenbach 228



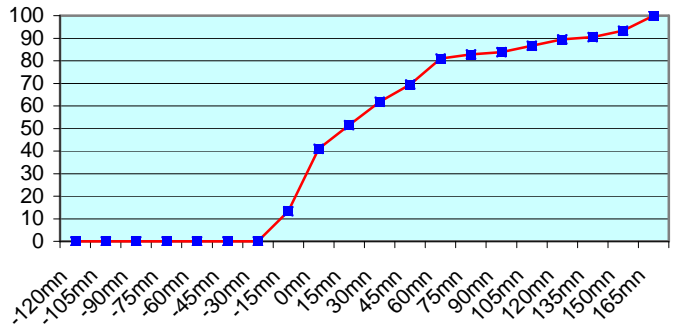
ASEU02 (288 report parts) Offenbach 288



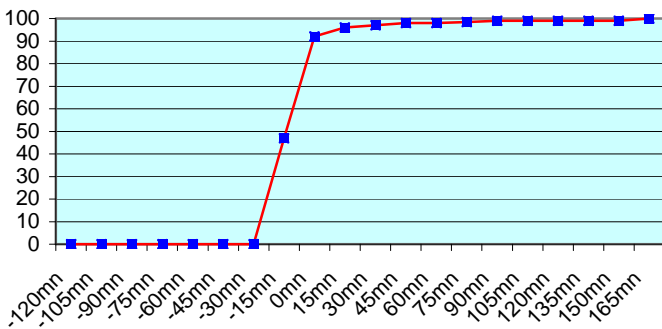
ASEU03 (246 report parts) Offenbach 246



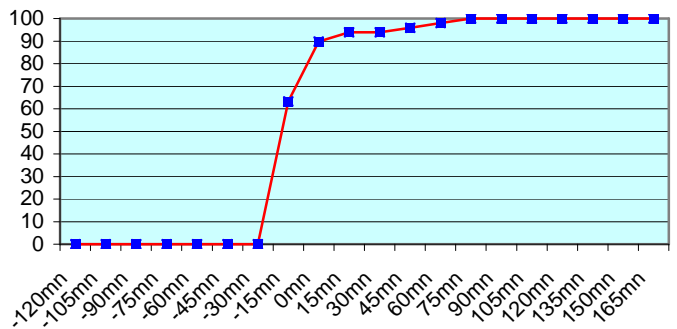
ASEU04 (210 report parts) Offenbach 210



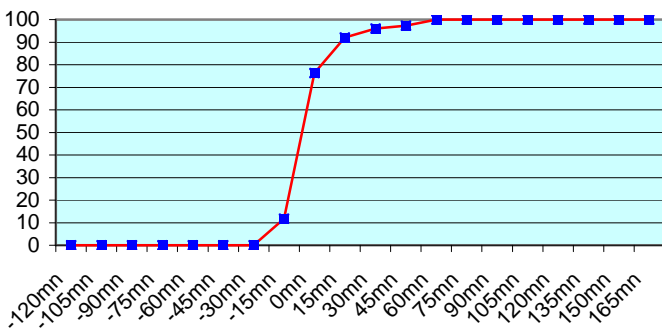
ASEU05 (200 report parts) Offenbach 200



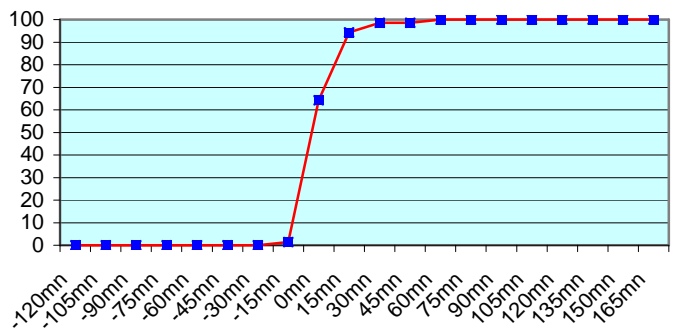
ASEU06 (98 report parts) Offenbach 98



ASDE01 (152 report parts) Offenbach 152

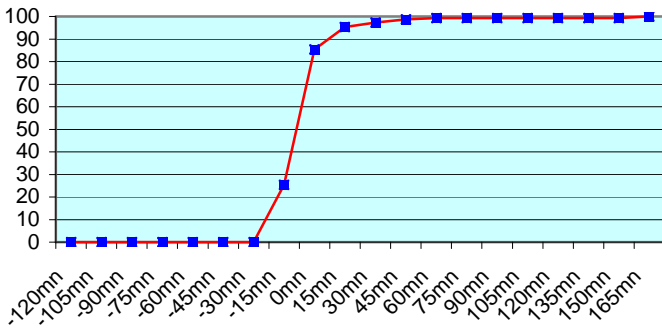


ASDE02 (140 report parts) Offenbach 140

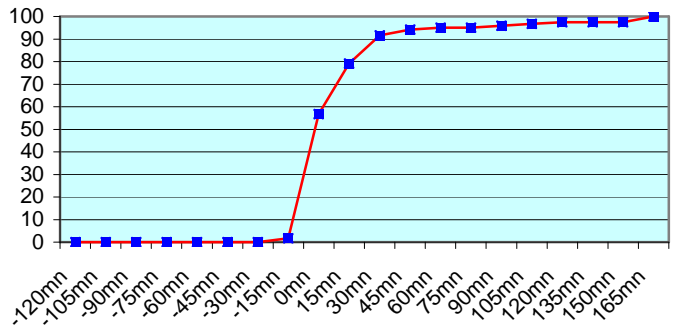




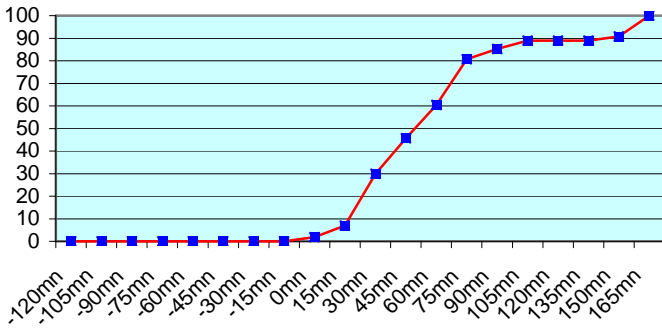
ASDE03 (300 report parts) Offenbach 300



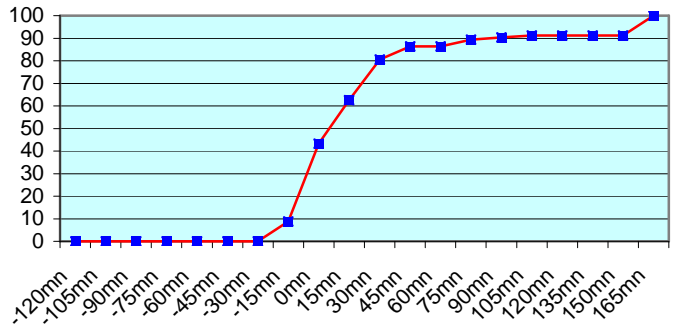
ASDE04 (240 report parts) Offenbach 240



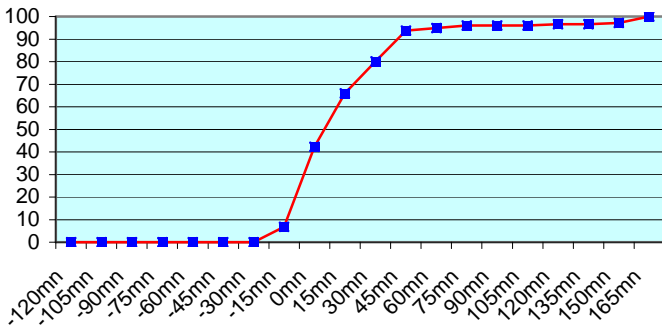
DBLK (217 report parts) Offenbach 217



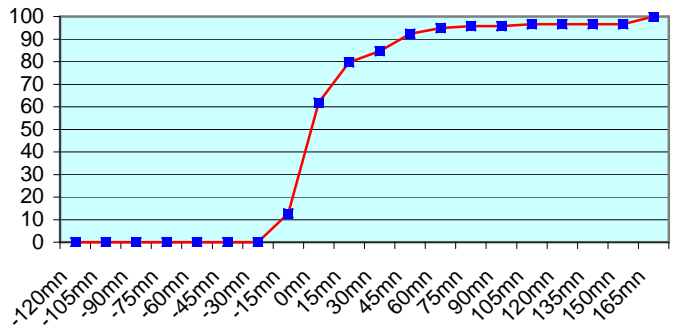
ASDK01 (206 report parts) Offenbach 206



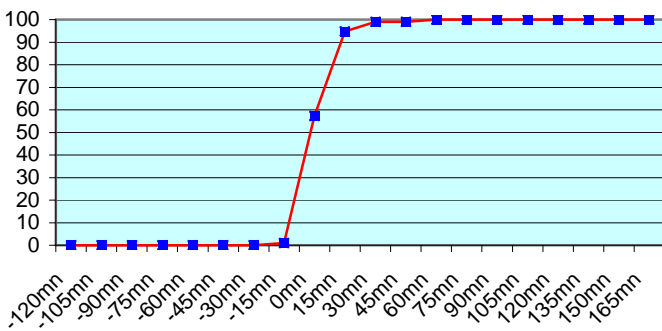
ASDK02 (352 report parts) Offenbach 352



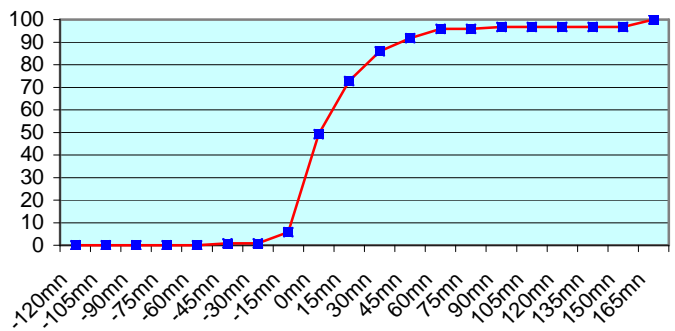
ASDK3 (236 report parts) Offenbach 236



ASES01 (192 report parts) Offenbach 192

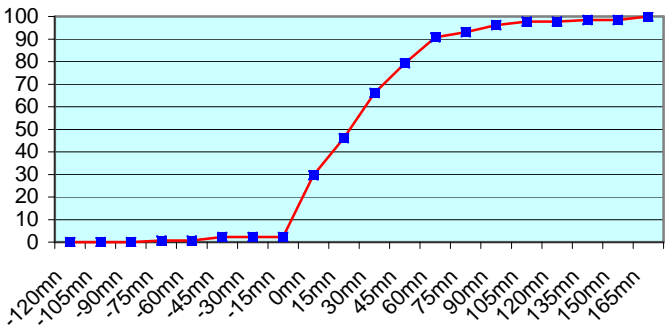


ASFR1 (242 report parts) Email 242

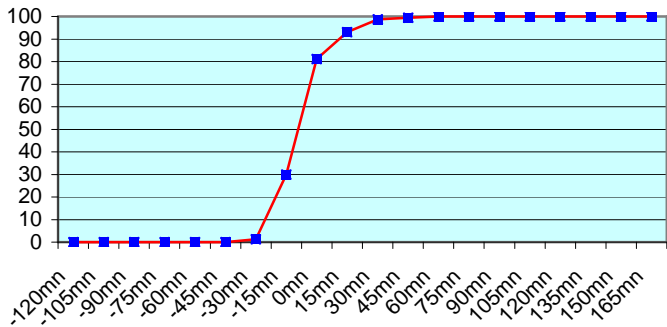




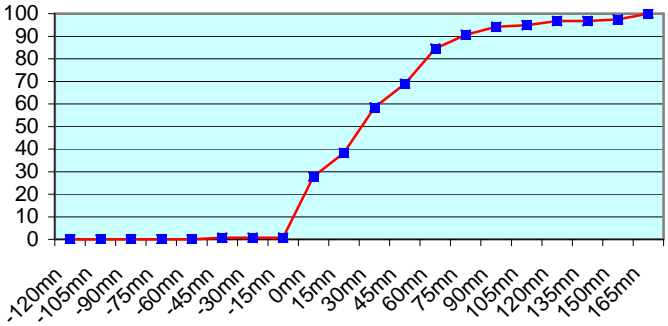
ASFR2 (260 report parts) Email 260



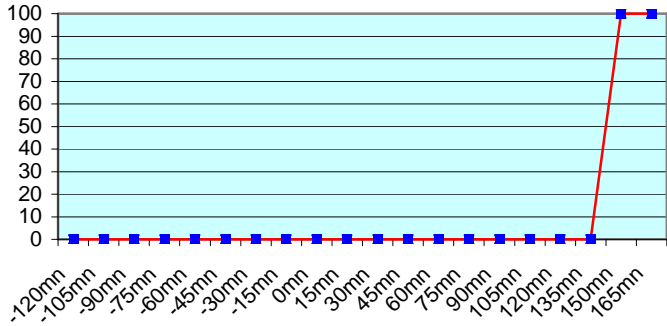
ASFR3 (318 report parts) Email 318



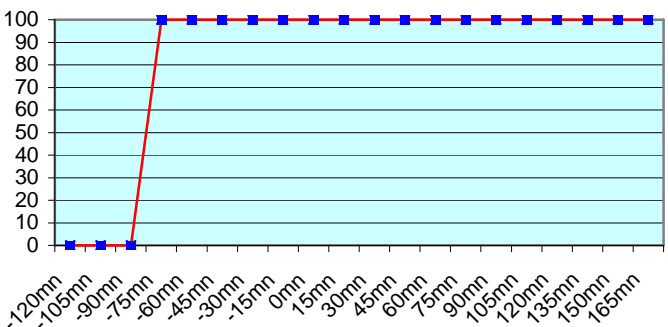
ASFR4 (277 report parts) Email 277

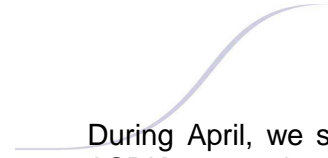


JGQH (77 report parts) Exeter 77



JNSR (4 report parts) Exeter 4





During April, we still found messages from ASDK2. In the data department of DMI the station name ASDK02 was changed to ASDK2. Therefore the same soundings were transmitted twice to the GTS. The problem should be solved now. Thus, the soundings from ASDK2 were fake soundings.

No particular problem was noticed concerning the others European ships.

Japanese ships follow a different procedure with an important shift between the sending of the message and the synoptic hour. So, no graphic was displayed about Exeter.

For any comment or remark please contact Météo-France Toulouse DSO/DOA department

Frédéric Marin (frederic.marin@meteo.fr)

Hugues Jardat (hugues.jardat@meteo.fr)