

Joint WMO/IOC Technical Commission for  
Oceanography - Ship Observation Team

# **End-to-end report of the ASAP data dissemination performance January to March 2014**

## 1. Introduction

Météo-France is in charge of a end-to-end report of the ASAP data dissemination performance.

The matter of this paper is to evaluate the results of the three last months (January 2014 – March 2014).

## 2. Information available at Météo-France

TEMP-SHIP messages are received at LFPW (Toulouse) from EGRR (Exeter), EDZW (Offenbach) and Email.

The following information is available :

Reception at LFPW	Broadcast by LFPW
Call sign	Call sign
Header	Channel
Channel	Broadcast date
Reception date	Time lapse
Size	Broadcast size
Format	Recipient
Error	
Operator	

### 3. List of call signs available

<b>Country</b>	<b>Call sign</b>	<b>Country</b>	<b>Call sign</b>
Denmark	ASDK01	Japan	JCCX
	ASDK02		JGQH
	ASDK3		JIVB
E-ASAP	ASEU01		JDWX
	ASEU02		JNSR
	ASEU03		JDSS
	ASEU04	Spain	ASES01
	ASEU05	USA	WTEC
	ASEU06		
France	ASFR1		
	ASFR2		
	ASFR3		
	ASFR4		
Germany	ASDE01		
	ASDE02		
	ASDE03		
	ASDE04	Test	SHIP
	DBLK		ASDE09
	DFCG		

#### 4. Origin of the messages

Call sign	Offenbach	Exeter	Telex	Email	Mariner	Supervis	X25
ASEU01	98	0	0	0	0	0	0
ASEU02	146	0	0	0	0	0	0
ASEU03	156	0	0	0	0	0	0
ASEU04	184	0	0	0	0	0	0
ASEU05	168	0	0	0	0	0	0
ASEU06	114	0	0	0	0	0	0
ASDE01	174	0	0	0	0	0	0
ASDE02	140	0	0	0	0	0	0
ASDE03	142	0	0	0	0	0	0
ASDE04	184	0	0	0	0	0	0
DBLK	489	0	0	0	0	0	0
ASDK01	166	0	0	0	0	0	0
ASDK02	212	0	0	0	0	0	0
ASDK1	111	0	0	0	0	0	0
ASDK2	157	0	0	0	0	0	0
ASDK3	308	0	0	0	0	0	0
ASES01	168	0	0	0	0	0	0
ASFR1	0	0	0	236	0	0	0
ASFR2	0	0	0	216	0	0	0
ASFR3	0	0	0	185	0	0	0
ASFR4	0	0	0	283	0	0	0
JGQH	0	224	0	0	0	0	0
Test							
ASDE09	22	0	0	0	0	0	0
Wrong or strange call sign							
XXXXX	417	0	0	70	0	0	0

Mariner: French navy military sounding  
 Supervis: handled by operator

## 5. Global system performance

Month	Origin	Nb of messages received	Nb of messages in error	Percentage of messages in error	Nb of messages with operator action	Percentage of messages with operator action
2014-Jan	Offenbach	897	0	0		
	Exeter	84	0	0		
	Telex	0	not relevant	not relevant		
	Email	218	not relevant	not relevant		
	Mariner	0	not relevant	not relevant		
	X25	0	not relevant	not relevant		
	Supervis	0	0	not relevant		
	Total	1199	0	0	0	0
2014-Feb	Offenbach	1191	0	0		
	Exeter	91	0	0		
	Telex	0	not relevant	not relevant		
	Email	350	not relevant	not relevant		
	Mariner	0	not relevant	not relevant		
	X25	0	not relevant	not relevant		
	Supervis	0	0	not relevant		
	Total	1632	0	0	0	0
2014-Mar	Offenbach	1468	0	0		
	Exeter	49	0	0		
	Telex	0	not relevant	not relevant		
	Email	422	not relevant	not relevant		
	Mariner	0	not relevant	not relevant		
	X25	0	not relevant	not relevant		
	Supervis	0	0	not relevant		
	Total	1939	0	0	0	0
Total	Offenbach	3556	0	0		
	Exeter	224	0	0		
	Telex	0	0	not relevant		
	Email	990	8	0,81		
	Mariner	0	not relevant	not relevant		
	X25	0	not relevant	not relevant		
	Supervis	0	0	not relevant		
	Total	4770	0	0	0	0

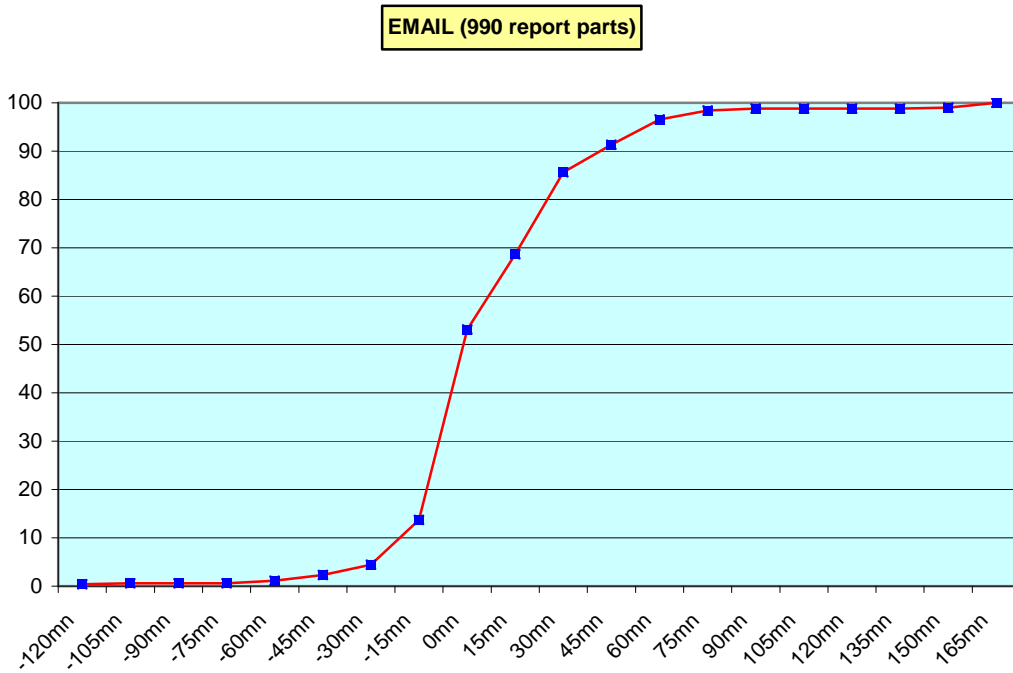
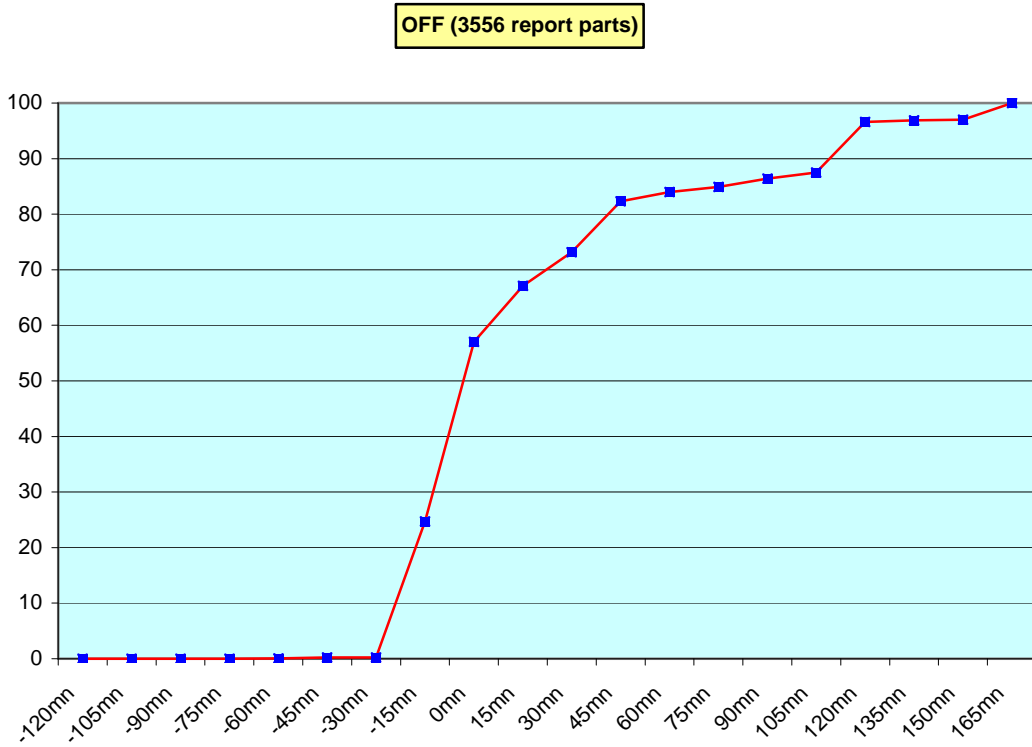
**Remark:** Email messages were excluded from the number of messages in error and from the relative percentage as values are regarded as not relevant. Not relevant percentages are due to not relevant values or to a total amount of data equal to zero.

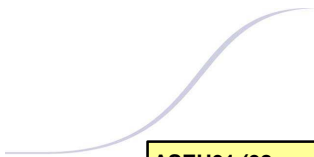
## 6. Global result of the syntactic check for the messages for each call sign.

Call sign	Nb of messages received	Nb of messages in error	Percentage of messages in error	Nb of messages with operator action	Percentage of messages with operator action
ASEU01	98	0	0	0	0
ASEU02	146	0	0	0	0
ASEU03	156	0	0	0	0
ASEU04	184	0	0	0	0
ASEU05	168	0	0	0	0
ASEU06	114	0	0	0	0
ASDE01	174	0	0	0	0
ASDE02	140	0	0	0	0
ASDE03	142	0	0	0	0
ASDE04	184	0	0	0	0
DBLK	489	0	0	0	0
ASDK01	166	0	0	0	0
ASDK02	212	0	0	0	0
ASDK1	111	0	0	0	0
ASDK2	157	0	0	0	0
ASDK3	308	0	0	0	0
ASES01	168	0	0	0	0
ASFR1	236	0	0	0	0
ASFR2	216	0	0	0	0
ASFR3	185	0	0	0	0
ASFR4	283	0	0	0	0
JGQH	224	0	0	0	0
Test					
ASDE09	22	0	0	0	0
Wrong or strange call sign					
XXXXX	487	0	0	0	0

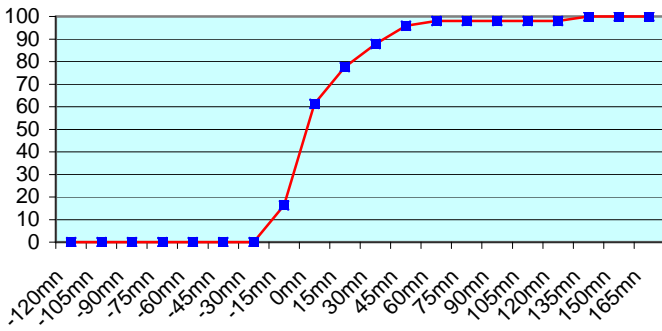
**Remark:** Data transmitted through email displayed an error rate close to 100% due to email syntax and were thus regarded as not relevant and excluded from errors total amount.

7. Mean time before the integration of the messages in the GTS in Toulouse. HH is the synoptic hour of reference.

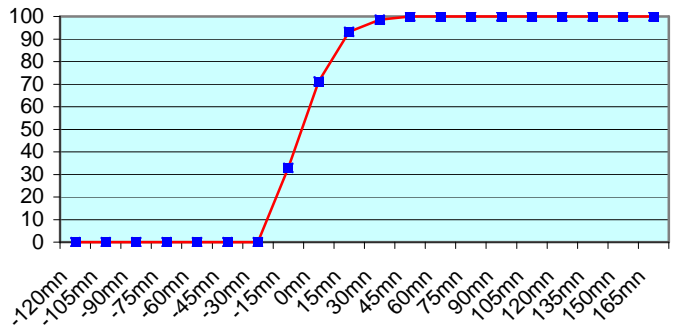




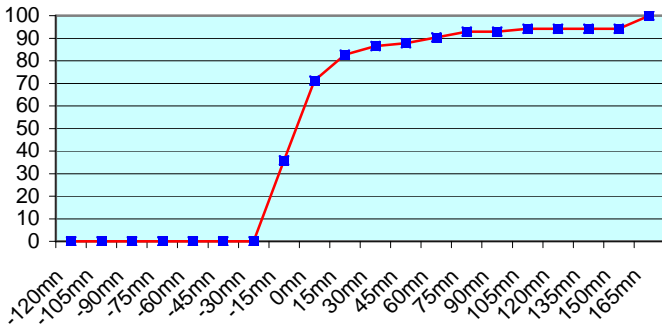
**ASEU01 (98 report parts) Offenbach 98**



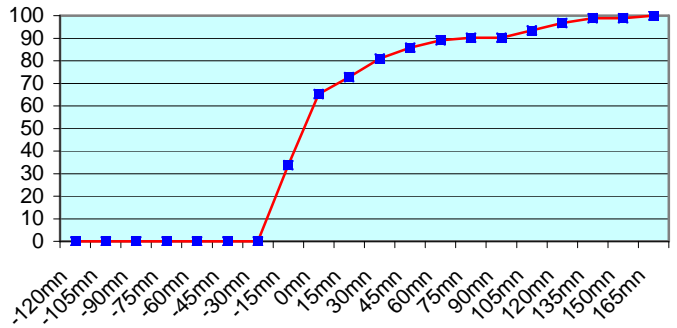
**ASEU02 (146 report parts) Offenbach 146**



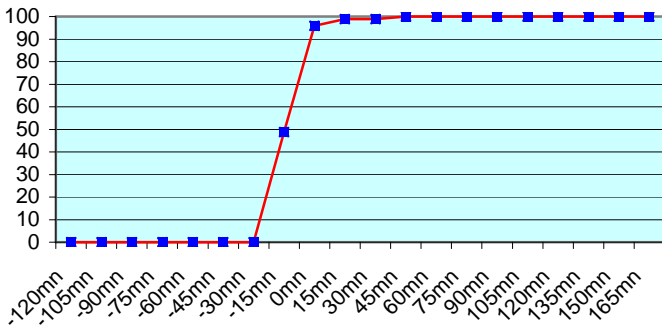
**ASEU03 (156 report parts) Offenbach 156**



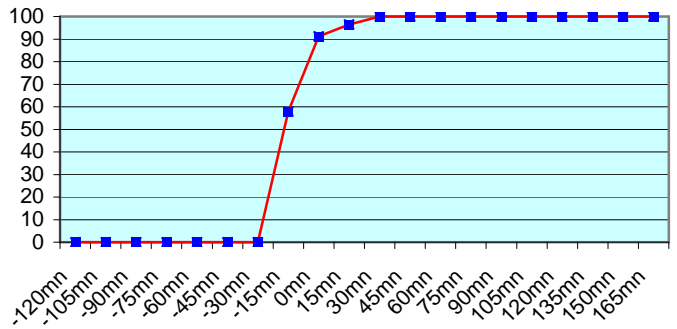
**ASEU04 (184 report parts) Offenbach 184**



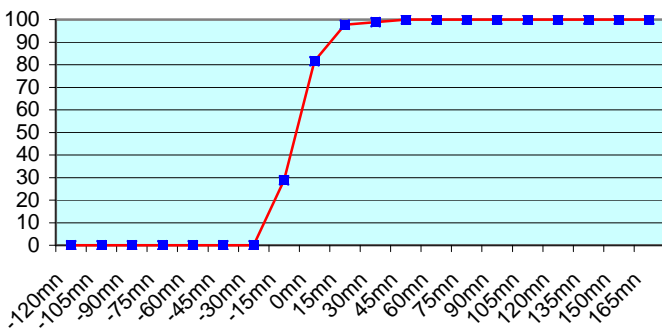
**ASEU05 (168 report parts) Offenbach 168**



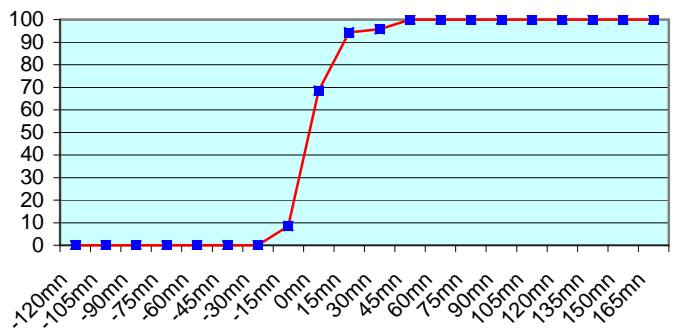
**ASEU06 (114 report parts) Offenbach 114**



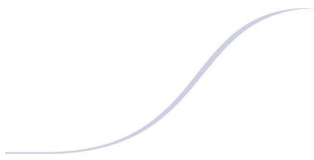
**ASDE01 (174 report parts) Offenbach 174**



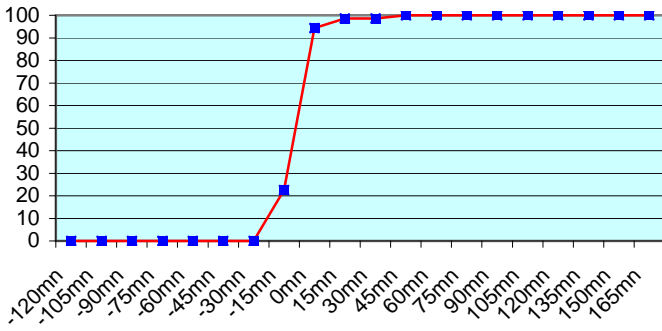
**ASDE02 (140 report parts) Offenbach 140**



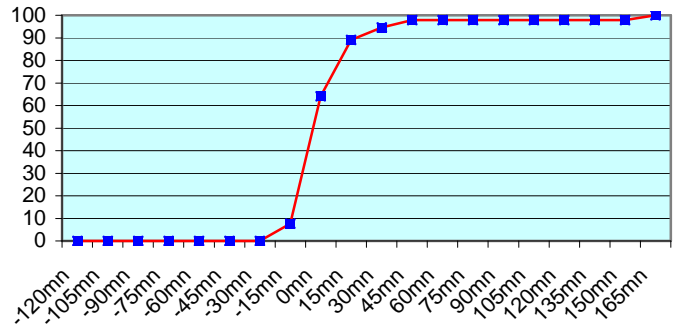




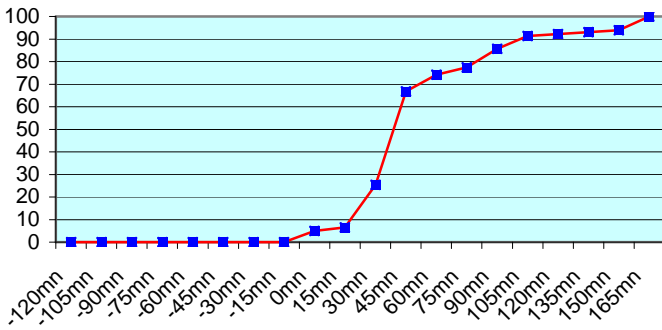
**ASDE03 (142 report parts) Offenbach 142**



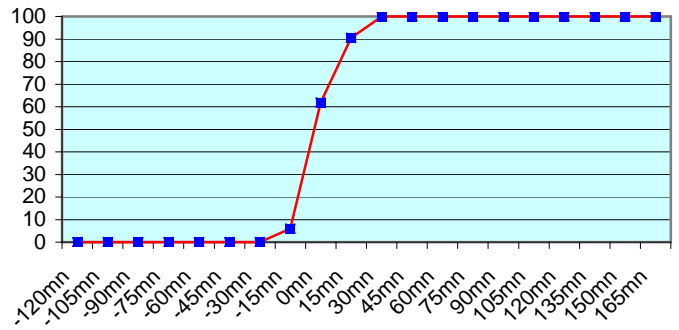
**ASDE04 (184 report parts) Offenbach 184**



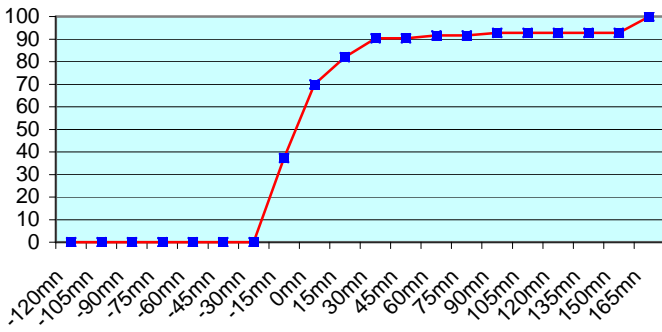
**DBLK (489 report parts) Offenbach 489**



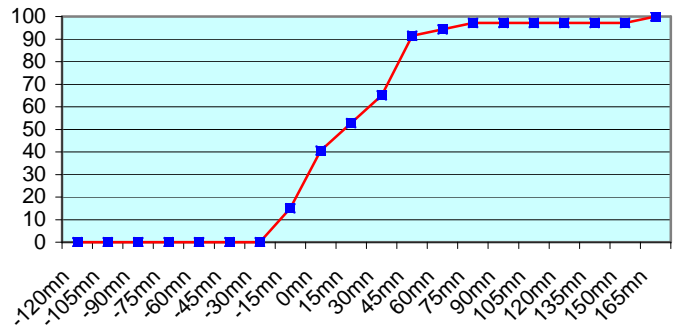
**ASES01 (168 report parts) Offenbach 168**



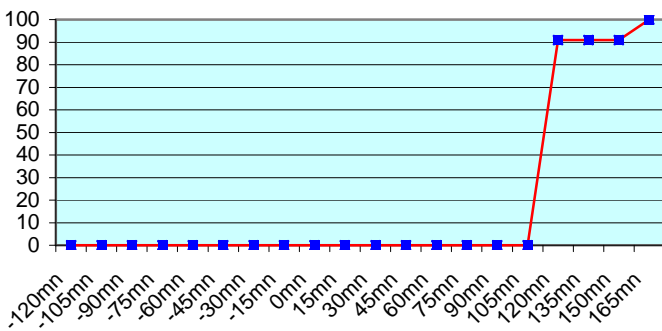
**ASDK01 (166 report parts) Offenbach 166**



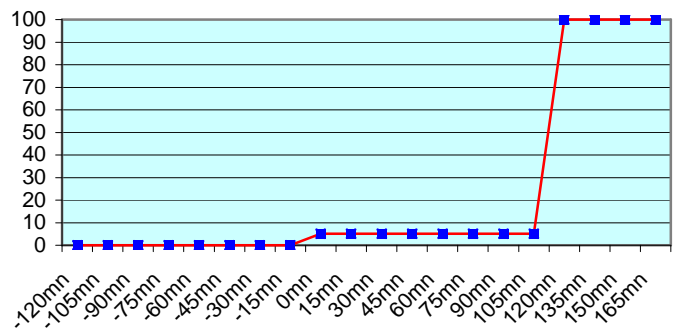
**ASDK02 (212 report parts) Offenbach 212**

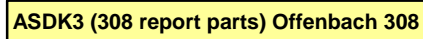


**ASDK1 (111 report parts) Offenbach 111**

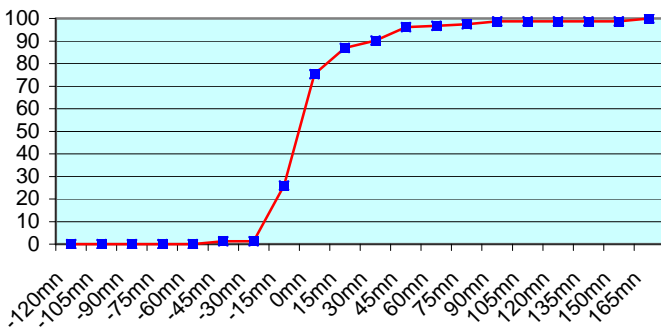


**ASDK2 (157 report parts) Offenbach 157**

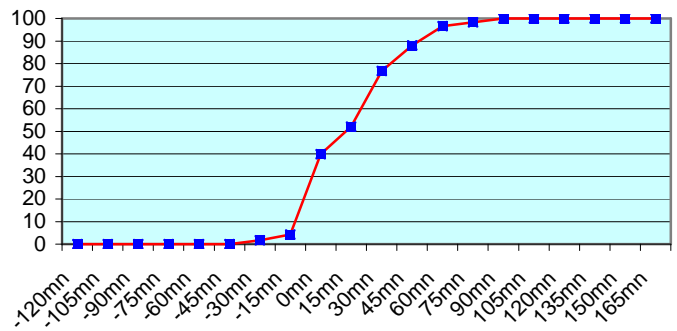




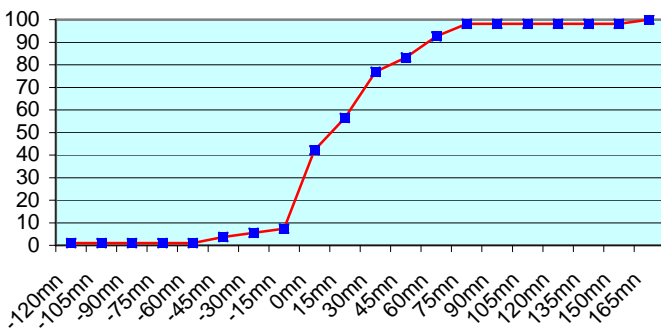
ASDK3 (308 report parts) Offenbach 308



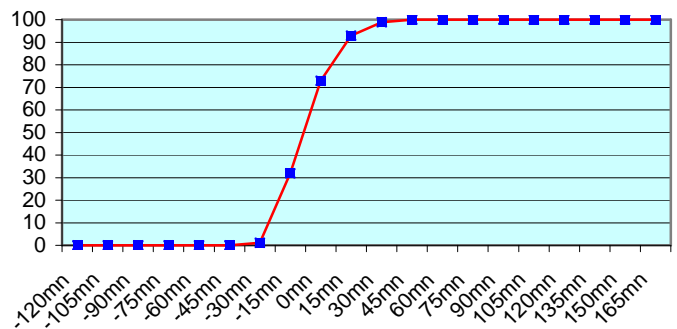
ASFR1 (236 report parts) Email 236



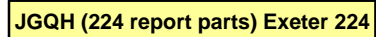
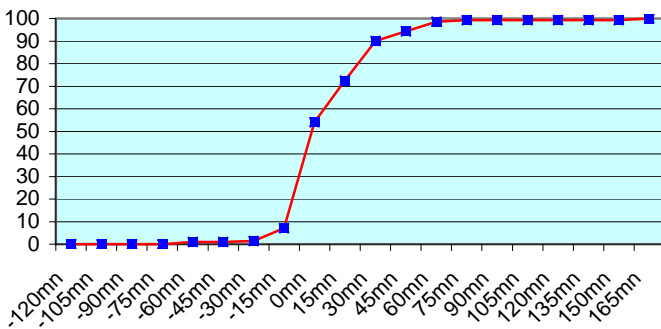
ASFR2 (216 report parts) Email 216



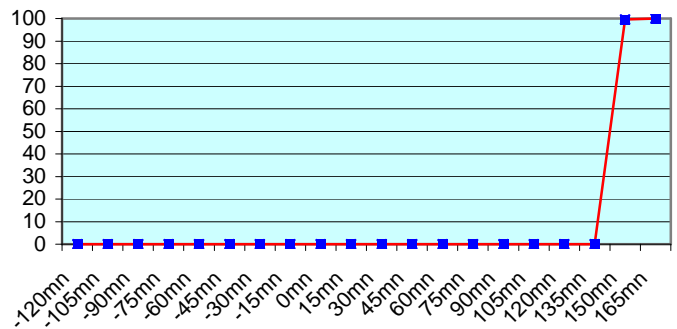
ASFR3 (185 report parts) Email 185



ASFR4 (283 report parts) Email 283



JGQH (224 report parts) Exeter 224



During these 3 months, we found messages from ASDK1 and ASDK2. In the data department of DMI the station names ASDK01 and ASDK02 were changed to ASDK1 and ASDK2. Therefore the same soundings were transmitted twice to the GTS. The problem should be solved now. Thus, the soundings from ASDK1 and ASDK2 were fake soundings.

No particular problem was noticed concerning the others European ships.

Japanese ships follow a different procedure with an important shift between the sending of the message and the synoptic hour. So, no graphic was displayed about Exeter.

For any comment or remark please contact Météo-France Toulouse DSO/DOA department

Frédéric Marin ([frederic.marin@meteo.fr](mailto:frederic.marin@meteo.fr))

Hugues Jardat ([hugues.jardat@meteo.fr](mailto:hugues.jardat@meteo.fr))