

Joint WMO/IOC Technical Commission for
Oceanography - Ship Observation Team

End-to-end report of the ASAP data dissemination performance July to September 2013

1. Introduction

Météo-France is in charge of a end-to-end report of the ASAP data dissemination performance.

The matter of this paper is to evaluate the results of the three last months (July 2013 – September 2013).

2. Information available at Météo-France

TEMP-SHIP messages are received at LFPW (Toulouse) from EGRR (Exeter), EDZW (Offenbach) and Email.

The following information is available :

Reception at LFPW	Broadcast by LFPW
Call sign	Call sign
Header	Channel
Channel	Broadcast date
Reception date	Time lapse
Size	Broadcast size
Format	Recipient
Error	
Operator	

3. List of call signs available

Country	Call sign	Country	Call sign
Denmark	ASDK01	Japan	JCCX
	ASDK02		JGQH
	ASDK3		JIVB
E-ASAP	ASEU01		JDWX
	ASEU02		JNSR
	ASEU03		JDSS
	ASEU04	Spain	ASES01
	ASEU05	USA	WTEC
	ASEU06		
France	ASFR1		
	ASFR2		
	ASFR3		
	ASFR4		
Germany	ASDE01		
	ASDE02		
	ASDE03		
	ASDE04	Test	SHIP
	DBLK		ASDE09
	DFCG		

4. Origin of the messages

Call sign	Offenbach	Exeter	Telex	Email	Mariner	Supervis	X25
ASEU01	268	0	0	0	0	0	0
ASEU02	208	0	0	0	0	0	0
ASEU03	144	0	0	0	0	0	0
ASEU04	106	0	0	0	0	0	0
ASEU05	156	0	0	0	0	0	0
ASEU06	198	0	0	0	0	0	0
ASDE01	214	0	0	0	0	0	0
ASDE02	128	0	0	0	0	0	0
ASDE03	150	0	0	0	0	0	0
ASDE04	262	0	0	0	0	0	0
DBLK	430	0	0	0	0	0	0
ASDK01	6	0	0	0	0	0	0
ASDK02	297	0	0	0	0	0	0
ASDK3	381	0	0	0	0	0	0
ASES01	232	0	0	0	0	0	0
ASFR1	0	0	0	320	0	0	0
ASFR2	0	0	0	253	0	0	0
ASFR3	0	0	0	219	0	0	0
ASFR4	0	0	0	284	0	0	0
JGQH	0	208	0	0	0	0	0
JNSR	0	989	0	0	0	0	0
JDSS	0	72	0	0	0	0	0
Test							
ASDE09	12	0	0	0	0	0	0
Wrong or strange call sign							
XXXXX	225	0	0	77	0	0	0
numer.	3	0	0	0	0	0	0

Mariner: French navy military sounding

Supervis: handled by operator

5. Global system performance

Month	Origin	Nb of messages received	Nb of messages in error	Percentage of messages in error	Nb of messages with operator action	Percentage of messages with operator action
2013-Jul	Offenbach	1329	0	0		
	Exeter	136	0	0		
	Telex	0	not relevant	not relevant		
	Email	429	not relevant	not relevant		
	Mariner	0	not relevant	not relevant		
	X25	0	not relevant	not relevant		
	Supervis	0	0	not relevant		
	Total	1465	0	0	0	0
2013-Aug	Offenbach	1182	0	0		
	Exeter	182	0	0		
	Telex	0	not relevant	not relevant		
	Email	369	not relevant	not relevant		
	Mariner	0	not relevant	not relevant		
	X25	0	not relevant	not relevant		
	Supervis	0	0	not relevant		
	Total	1364	0	0	0	0
2013-Sep	Offenbach	972	0	0		
	Exeter	951	0	0		
	Telex	0	not relevant	not relevant		
	Email	355	not relevant	not relevant		
	Mariner	0	not relevant	not relevant		
	X25	0	not relevant	not relevant		
	Supervis	0	0	not relevant		
	Total	1923	0	0	0	0
Total	Offenbach	3483	0	0		
	Exeter	1269	0	0		
	Telex	0	0	not relevant		
	Email	1153	45	3,9		
	Mariner	0	not relevant	not relevant		
	X25	0	not relevant	not relevant		
	Supervis	0	0	not relevant		
	Total	5905	0	0	0	0

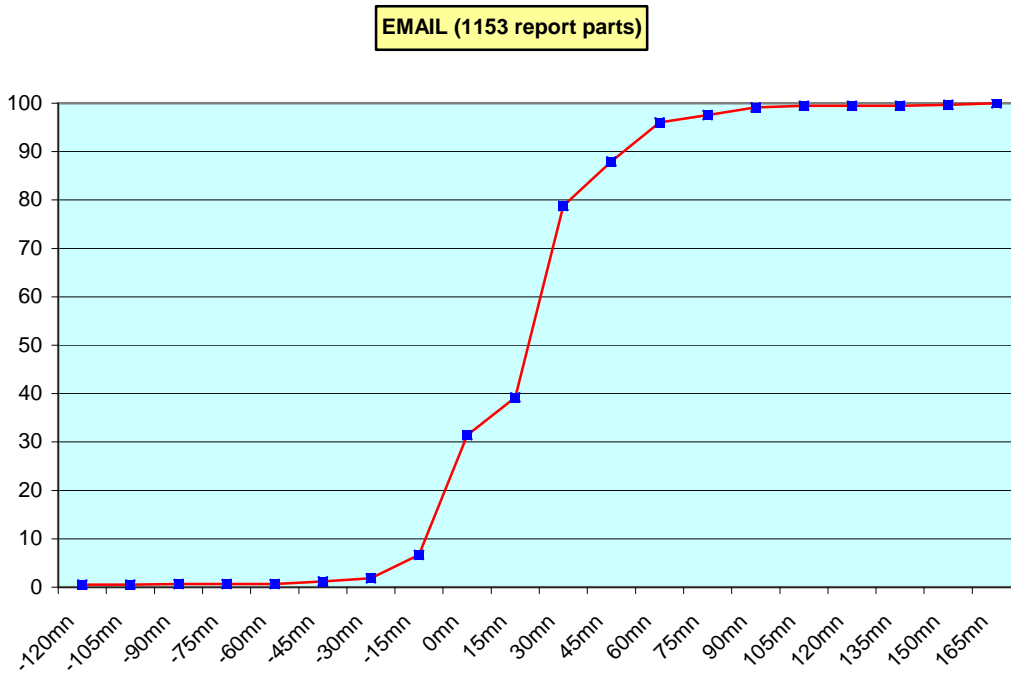
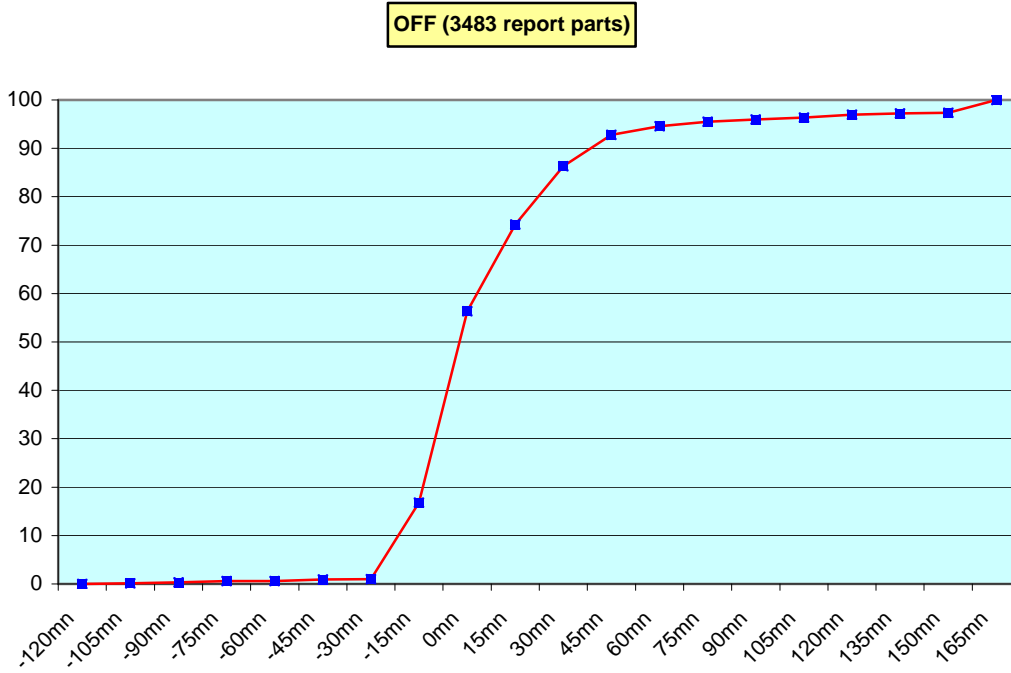
Remark: Email messages were excluded from the number of messages in error and from the relative percentage as values are regarded as not relevant. Not relevant percentages are due to not relevant values or to a total amount of data equal to zero.

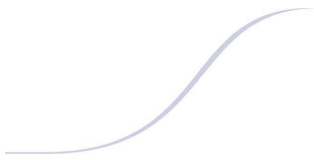
6. Global result of the syntactic check for the messages for each call sign.

Call sign	Nb of messages received	Nb of messages in error	Percentage of messages in error	Nb of messages with operator action	Percentage of messages with operator action
ASEU01	268	0	0	0	0
ASEU02	208	0	0	0	0
ASEU03	144	0	0	0	0
ASEU04	106	0	0	0	0
ASEU05	156	0	0	0	0
ASEU06	198	0	0	0	0
ASDE01	214	0	0	0	0
ASDE02	128	0	0	0	0
ASDE03	150	0	0	0	0
ASDE04	262	0	0	0	0
DBLK	430	0	0	0	0
ASDK01	6	0	0	0	0
ASDK02	297	0	0	0	0
ASDK3	381	0	0	0	0
ASES01	232	0	0	0	0
ASFR1	320	0	0	0	0
ASFR2	253	0	0	0	0
ASFR3	219	0	0	0	0
ASFR4	284	0	0	0	0
JGQH	208	0	0	0	0
JNSR	989	0	0	0	0
JDSS	72	0	0	0	0
Test					
ASDE09	12	0	0	0	0
Wrong or strange call sign					
XXXXX	302	0	0	0	0
numer,	3	0	0	0	0

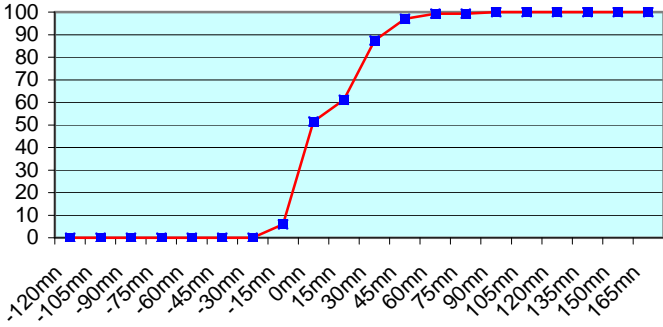
Remark: Data transmitted through email displayed an error rate close to 100% due to email syntax and were thus regarded as not relevant and excluded from errors total amount.

7. Mean time before the integration of the messages in the GTS in Toulouse. HH is the synoptic hour of reference.

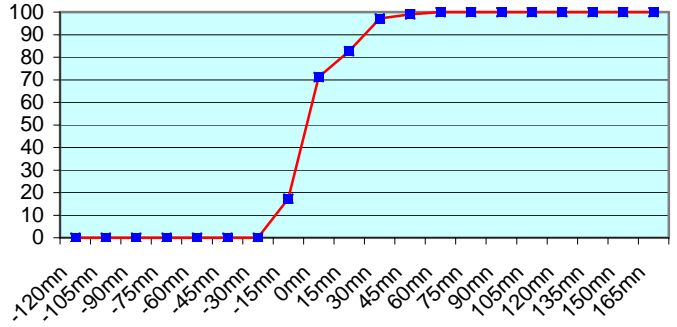




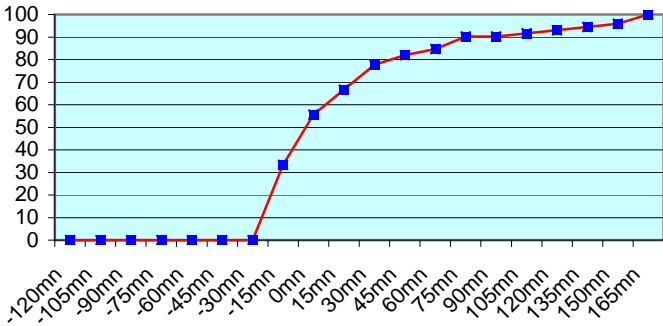
ASEU01 (268 report parts) Offenbach 268



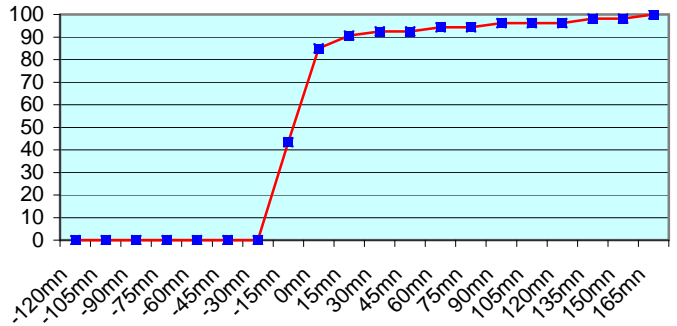
ASEU02 (208 report parts) Offenbach 208



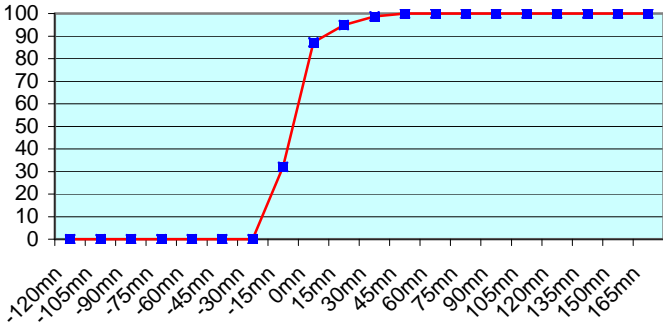
ASEU03 (144 report parts) Offenbach 144



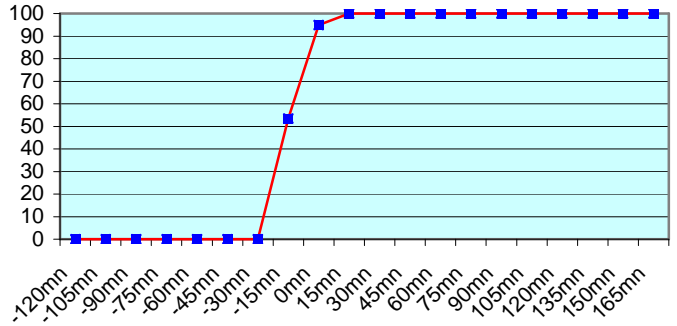
ASEU04 (106 report parts) Offenbach 106



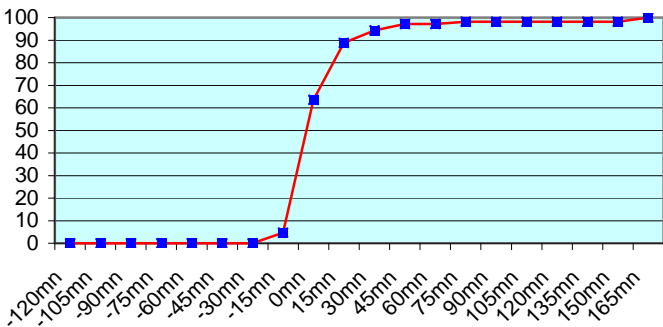
ASEU05 (156 report parts) Offenbach 156



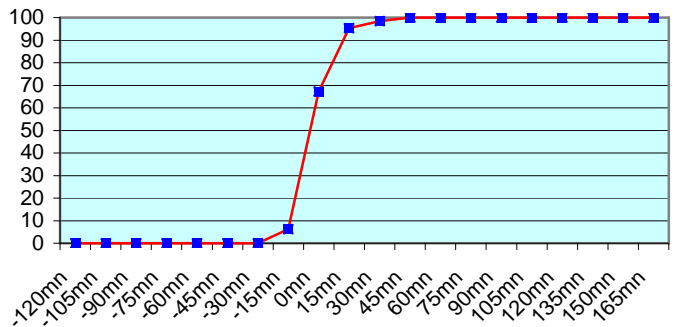
ASEU06 (198 report parts) Offenbach 198

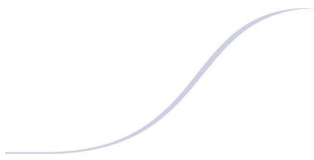


ASDE01 (214 report parts) Offenbach 214

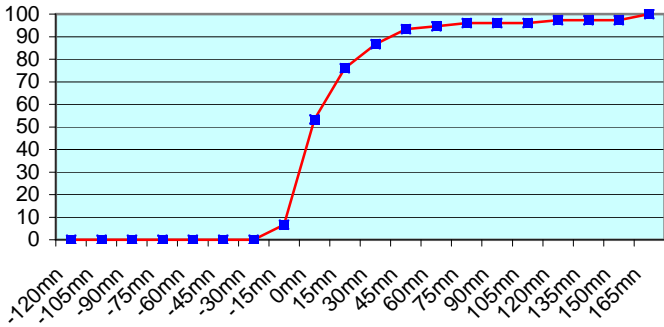


ASDE02 (128 report parts) Offenbach 128

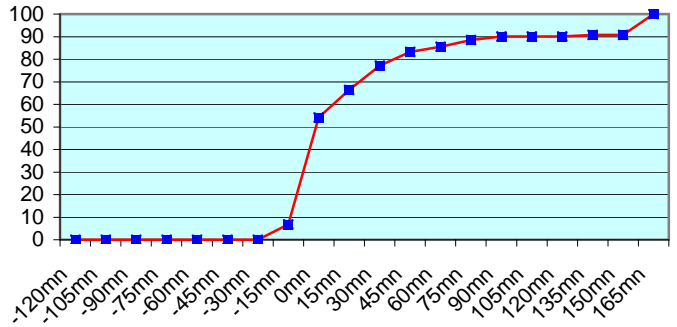




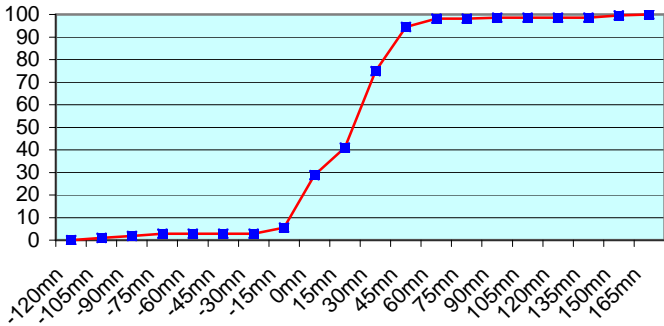
ASDE03 (150 report parts) Offenbach 150



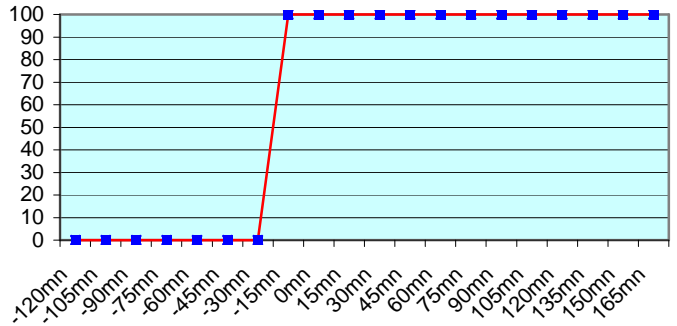
ASDE04 (262 report parts) Offenbach 262



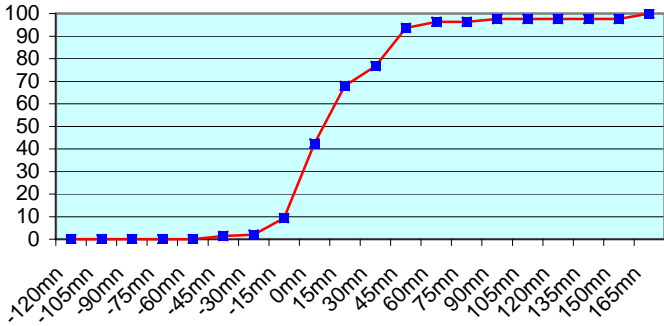
DBLK (430 report parts) Offenbach 430



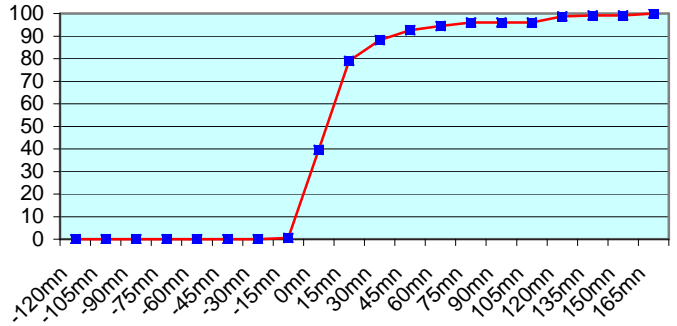
ASDK01 (6 report parts) Offenbach 6



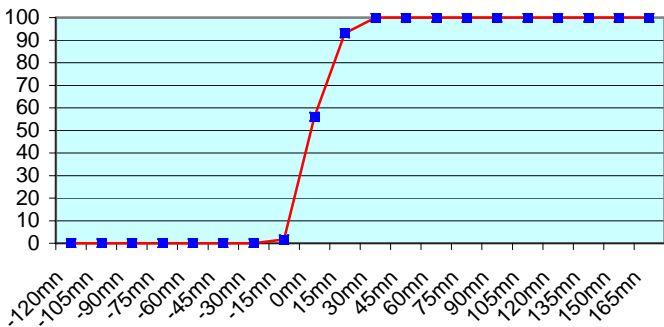
ASDK02 (297 report parts) Offenbach 297



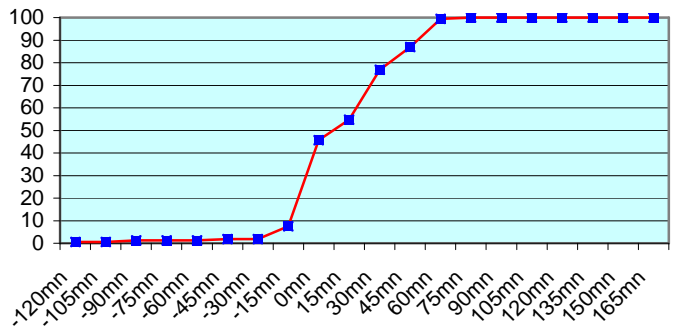
ASDK3 (381 report parts) Offenbach 381

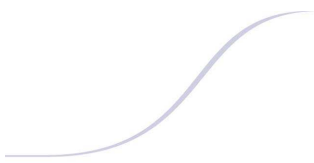


ASES01 (232 report parts) Offenbach 232

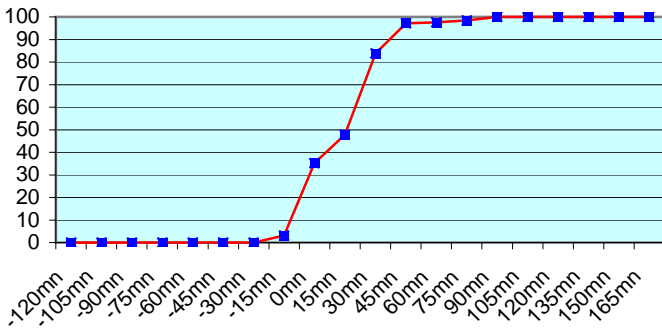


ASFR1 (320 report parts) Email 320

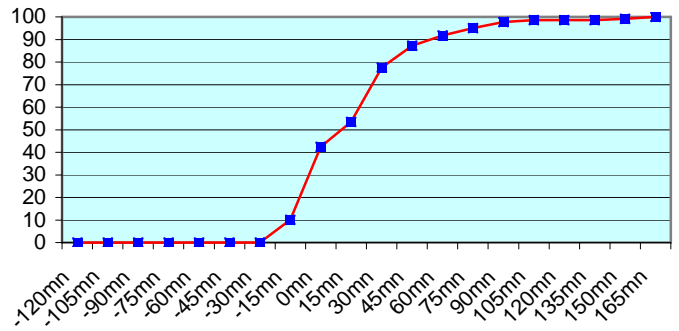




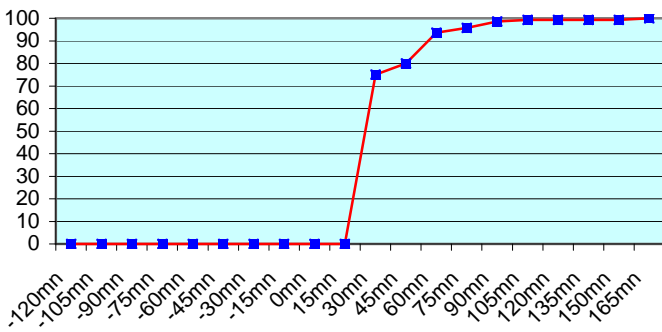
ASFR2 (253 report parts) Email 253



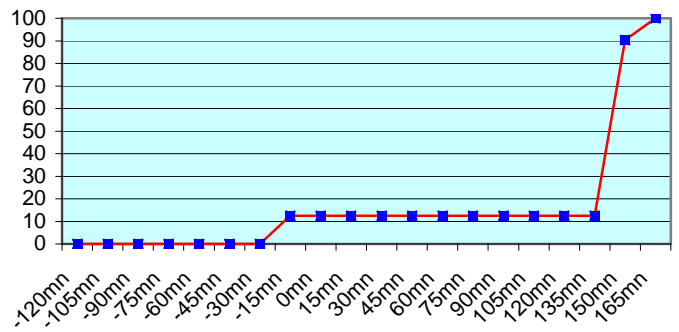
ASFR3 (219 report parts) Email 219



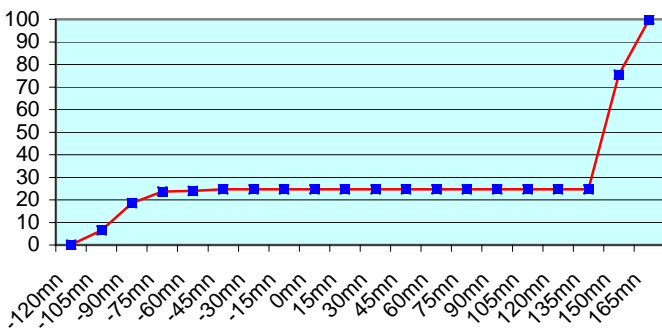
ASFR4 (284 report parts) Email 284



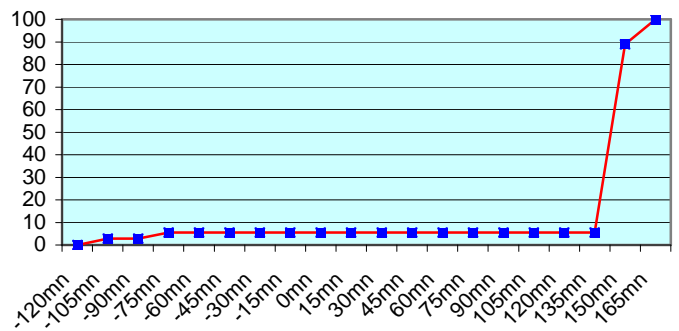
JGQH (208 report parts) Exeter 208



JNSR (989 report parts) Exeter 989



JDSS (72 report parts) Exeter 72



No particular problem was noticed concerning the European ships.
 Japanese ships follow a different procedure with an important shift between the sending of the message and the synoptic hour. So, no graphic was displayed about Exeter.

For any comment or remark please contact Météo-France Toulouse DSO/DOA department

Gérard Rey (gerard.rey@meteo.fr)
 Hugues Jardat (hugues.jardat@meteo.fr)