

Joint WMO/IOC Technical Commission for
Oceanography - Ship Observation Team

End-to-end report of the ASAP data dissemination performance April to June 2013

1. Introduction

Météo-France is in charge of a end-to-end report of the ASAP data dissemination performance.

The matter of this paper is to evaluate the results of the three last months (April 2013 – June 2013).

2. Information available at Météo-France

TEMP-SHIP messages are received at LFPW (Toulouse) from EGRR (Exeter), EDZW (Offenbach) and Email.

The following information is available :

Reception at LFPW	Broadcast by LFPW
Call sign	Call sign
Header	Channel
Channel	Broadcast date
Reception date	Time lapse
Size	Broadcast size
Format	Recipient
Error	
Operator	

3. List of call signs available

Country	Call sign	Country	Call sign
Denmark	ASDK01	Japan	JCCX
	ASDK02		JGQH
	ASDK3		JIVB
E-ASAP	ASEU01		JDWX
	ASEU02		JNSR
	ASEU03		JDSS
	ASEU04	Spain	ASES01
	ASEU05	USA	WTEC
	ASEU06		
France	ASFR1		
	ASFR2		
	ASFR3		
	ASFR4		
Germany	ASDE01		
	ASDE02		
	ASDE03		
	ASDE04	Test	SHIP
	DBLK		ASDE09
	DFCG		

4. Origin of the messages

Call Sign	Offenbach	Exeter	Telex	Email	Mariner	Supervis	X25
ASEU01	190	0	0	0	0	0	0
ASEU02	243	0	0	0	0	0	0
ASEU03	100	0	0	0	0	0	0
ASEU04	156	0	0	0	0	0	0
ASEU05	452	0	0	0	0	0	0
ASEU06	202	0	0	0	0	0	0
ASDE01	358	0	0	0	0	0	0
ASDE02	278	0	0	0	0	0	0
ASDE03	408	0	0	0	0	0	0
ASDE04	296	0	0	0	0	0	0
DBLK	299	0	0	0	0	0	0
ASDK01	169	0	0	0	0	0	0
ASDK02	316	0	0	0	0	0	0
ASDK3	351	0	0	0	0	0	0
ASES01	228	0	0	0	0	0	0
ASFR1	0	0	0	362	0	0	0
ASFR2	0	0	0	319	0	0	0
ASFR3	0	0	0	272	0	0	0
ASFR4	0	0	0	228	0	0	0
JGQH	0	111	0	0	0	0	0
JNSR	0	646	0	0	0	0	0
Test							
ASDE09	14	0	0	0	0	0	0
Wrong or strange call sign							
XXXXX	415	0	0	65	0	0	0

Mariner: French navy military sounding
 Supervis: handled by operator

5. Global system performance

Month	Origin	Nb of messages received	Nb of messages in error	Percentage of messages in error	Nb of messages with operator action	Percentage of messages with operator action
2013-April	Offenbach	1508	4	0,27		
	Exeter	20	0	0		
	Telex	0	not relevant	not relevant		
	Email	387	not relevant	not relevant		
	Mariner	0	not relevant	not relevant		
	X25	0	not relevant	not relevant		
	Supervis	0	0	not relevant		
	Total	1528	4	0,26	0	0
2013-May	Offenbach	1713	32	1,87		
	Exeter	91	0	0		
	Telex	0	not relevant	not relevant		
	Email	426	not relevant	not relevant		
	Mariner	0	not relevant	not relevant		
	X25	0	not relevant	not relevant		
	Supervis	0	0	not relevant		
	Total	1804	32	1,77	0	0
2013-June	Offenbach	1254	0	0		
	Exeter	646	0	0		
	Telex	0	not relevant	not relevant		
	Email	433	not relevant	not relevant		
	Mariner	0	not relevant	not relevant		
	X25	0	not relevant	not relevant		
	Supervis	0	0	not relevant		
	Total	1900	0	0	0	0
Total	Offenbach	4475	36	0,8		
	Exeter	757	0	0		
	Telex	0	0	not relevant		
	Email	1246	182	14,61		
	Mariner	0	not relevant	not relevant		
	X25	0	not relevant	not relevant		
	Supervis	0	0	not relevant		
	Total	6478	36	0,69	0	0

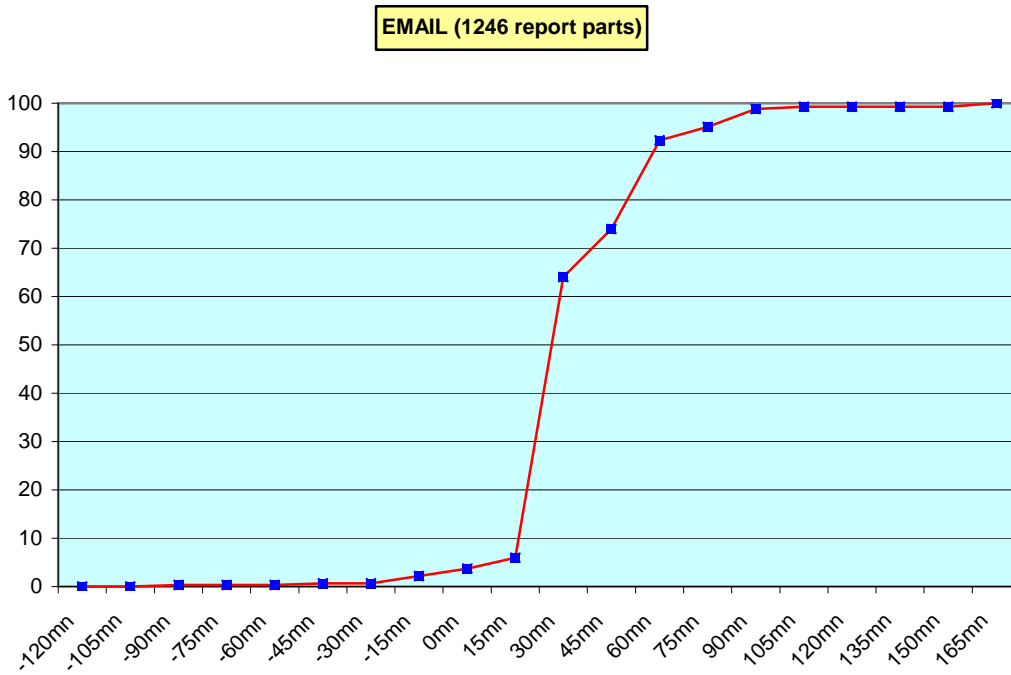
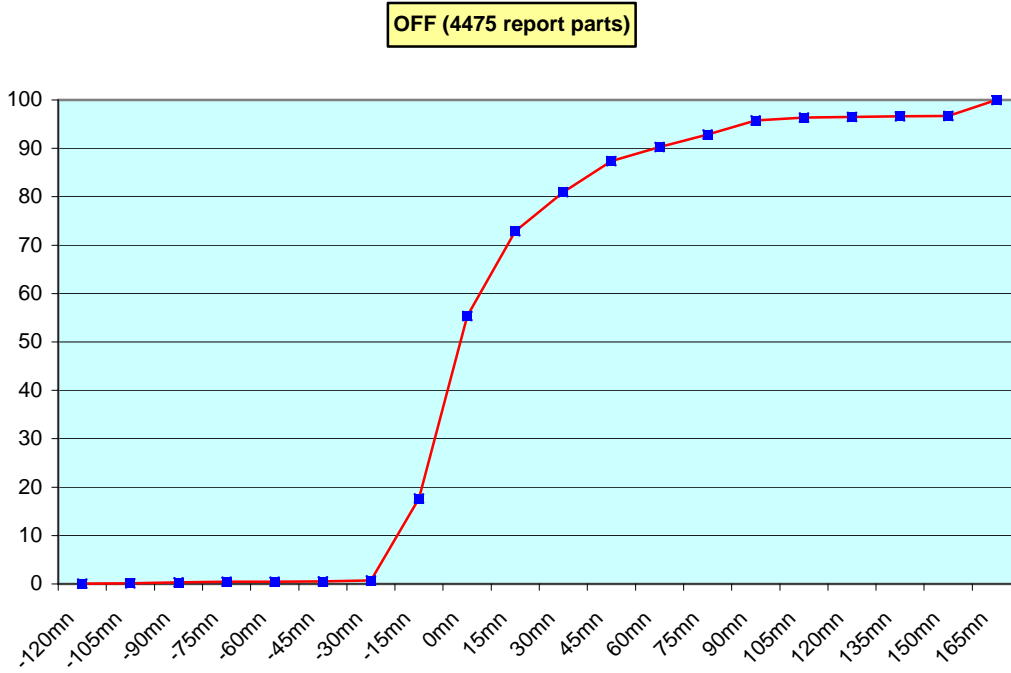
Remark: Email messages were excluded from the number of messages in error and from the relative percentage as values are regarded as not relevant. Not relevant percentages are due to not relevant values or to a total amount of data equal to zero.

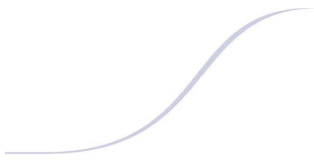
6. Global result of the syntactic check for the messages for each call sign.

Call Sign	Nb of messages received	Nb of messages in error	Percentage of messages in error	Nb of messages with operator action	Percentage of messages with operator action
ASEU01	190	0	0	0	0
ASEU02	243	0	0	0	0
ASEU03	100	0	0	0	0
ASEU04	156	0	0	0	0
ASEU05	452	0	0	0	0
ASEU06	202	0	0	0	0
ASDE01	358	0	0	0	0
ASDE02	278	0	0	0	0
ASDE03	408	0	0	0	0
ASDE04	296	0	0	0	0
DBLK	299	0	0	0	0
ASDK01	169	24	14,2	0	0
ASDK02	316	3	0,95	0	0
ASDK3	351	0	0	0	0
ASES01	228	0	0	0	0
ASFR1	362	0	0	0	0
ASFR2	319	0	0	0	0
ASFR3	272	0	0	0	0
ASFR4	228	0	0	0	0
JGQH	111	0	0	0	0
JNSR	646	0	0	0	0
Test					
ASDE09	14	0	0	0	0
Wrong or strange call sign					
XXXXX	480	9	1,88	0	0

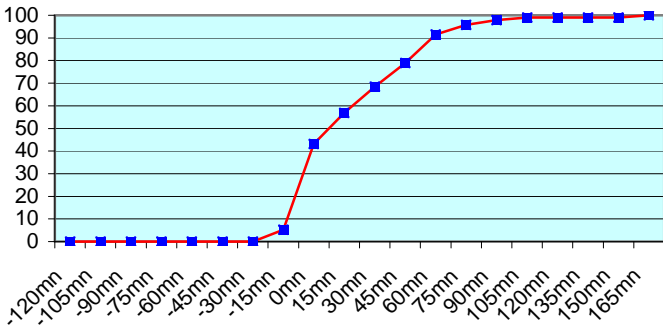
Remark: Data transmitted through email displayed an error rate close to 100% due to email syntax and were thus regarded as not relevant and excluded from errors total amount.

7. Mean time before the integration of the messages in the GTS in Toulouse. HH is the synoptic hour of reference.

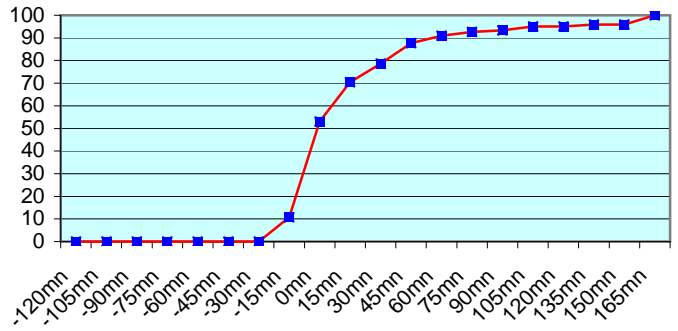




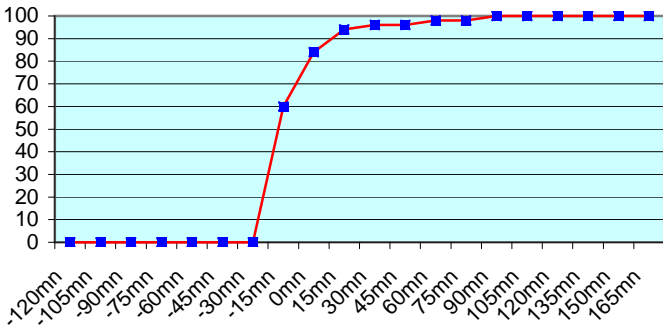
ASEU01 (190 report parts) Offenbach 190



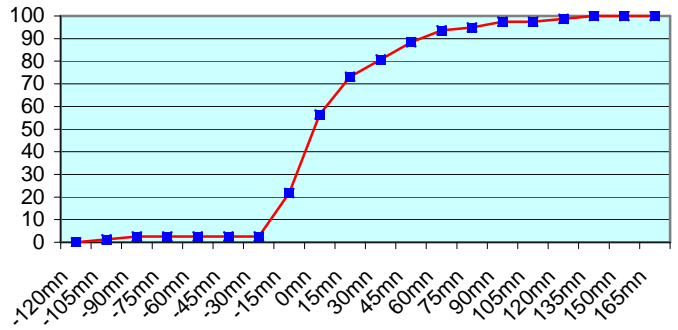
ASEU02 (243 report parts) Offenbach 243



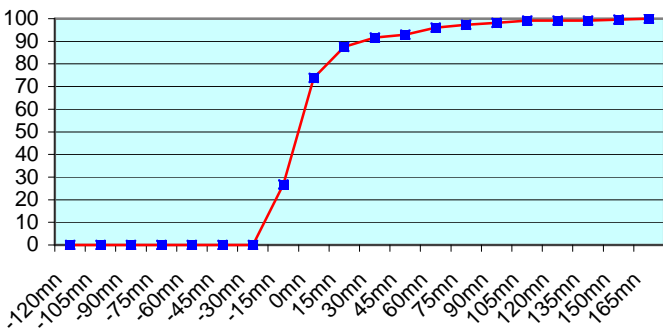
ASEU03 (100 report parts) Offenbach 100



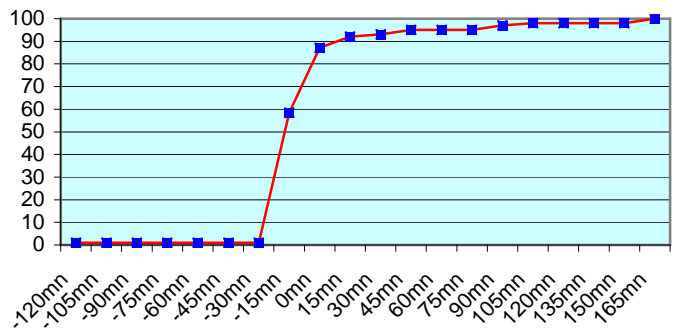
ASEU04 (156 report parts) Offenbach 156



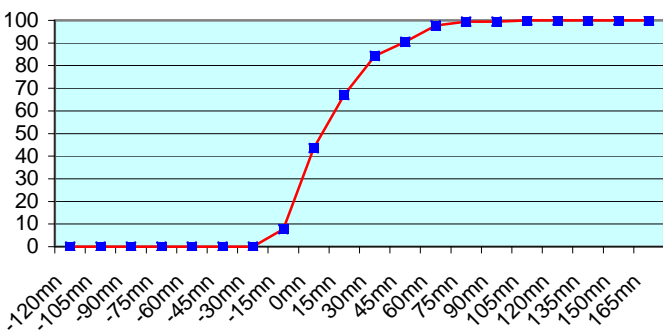
ASEU05 (452 report parts) Offenbach 452



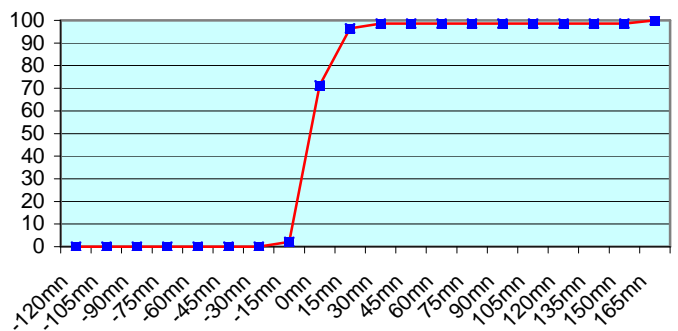
ASEU06 (202 report parts) Offenbach 202



ASDE01 (358 report parts) Offenbach 358

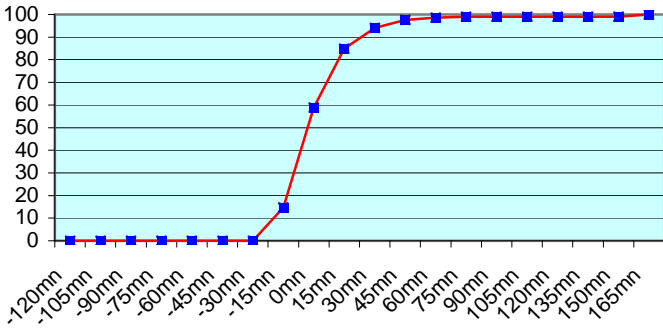


ASDE02 (278 report parts) Offenbach 278

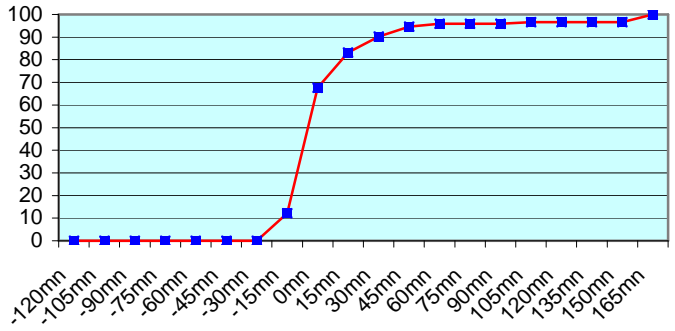




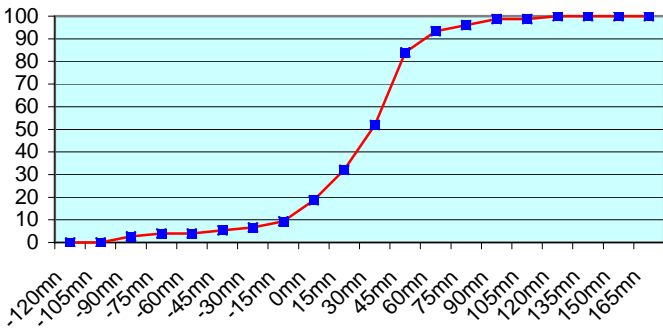
ASDE03 (408 report parts) Offenbach 408



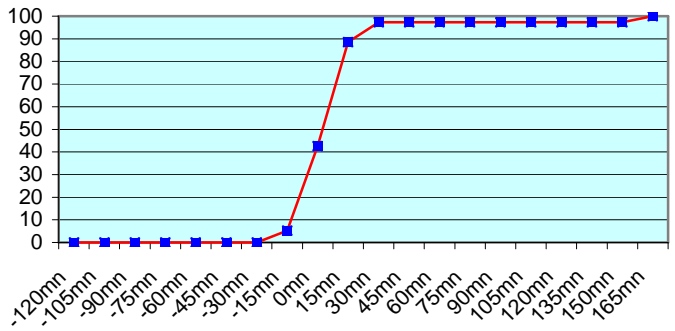
ASDE04 (296 report parts) Offenbach 296



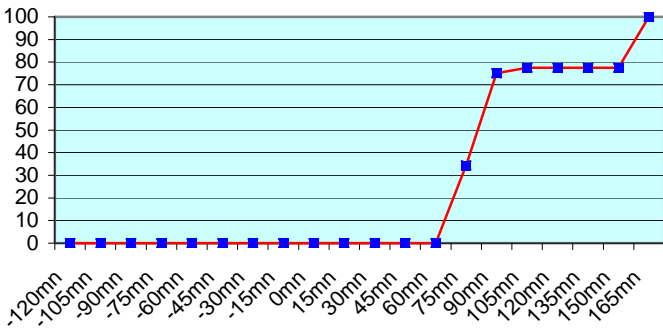
DBLK (299 report parts) Offenbach 299



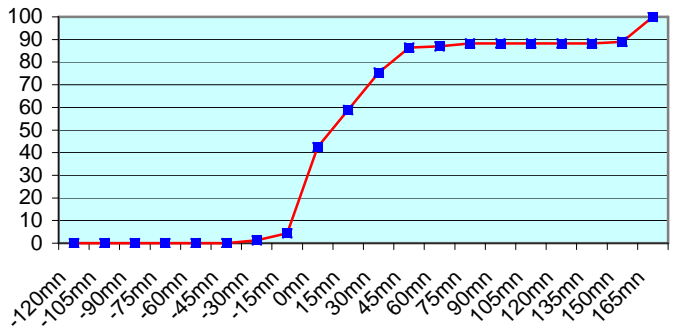
ASES01 (228 report parts) Offenbach 228



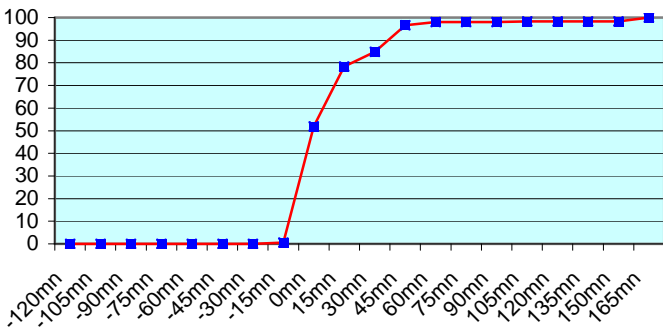
ASDK01 (169 report parts) Offenbach 169



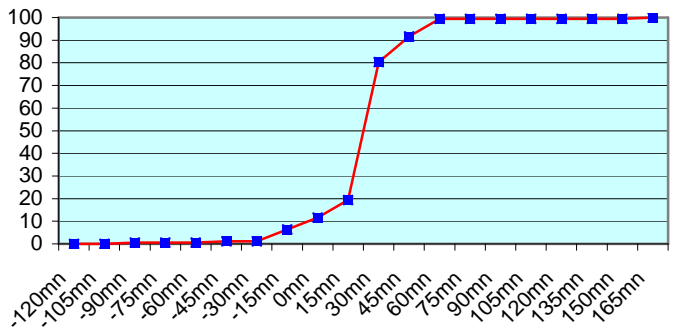
ASDK02 (316 report parts) Offenbach 316

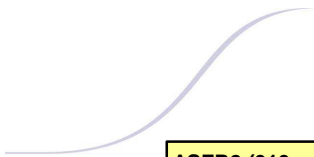


ASDK3 (351 report parts) Offenbach 351

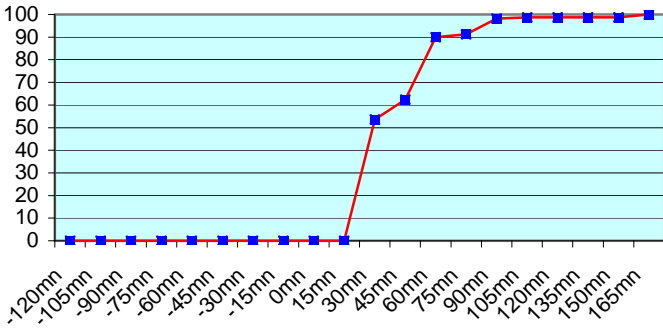


ASFR1 (362 report parts) Email 362

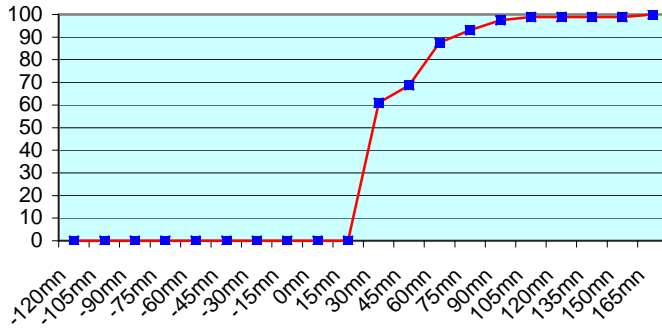




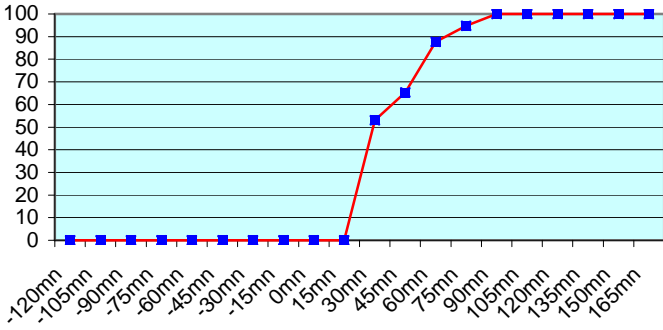
ASFR2 (319 report parts) Email 319



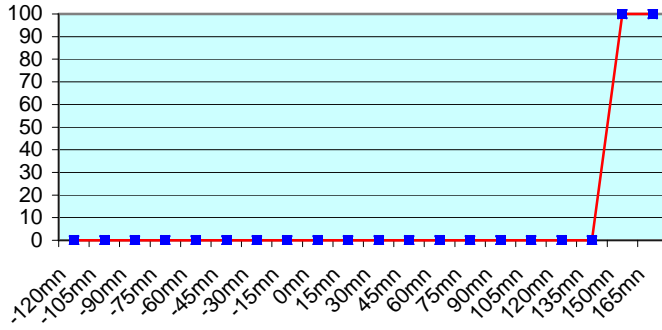
ASFR3 (272 report parts) Email 272



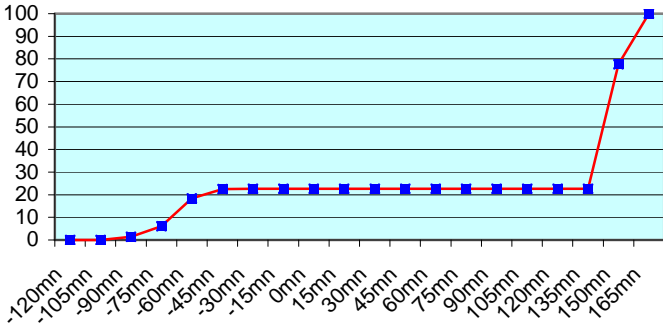
ASFR4 (228 report parts) Email 228

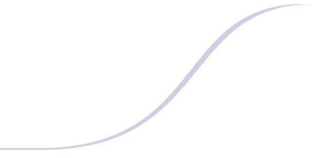


JGQH (111 report parts) Exeter 111



JNSR (646 report parts) Exeter 646





In June, to have better results, the procedure for transmission of messages changed on ASFR1. Next month, this procedure will change on ASFR2, ASFR3 and ASFR4. Japanese ship follow a different procedure with an important shift between the sending of the message and the synoptic hour. So, no graphic was displayed about Exeter.

For any comment or remark please contact Météo-France Toulouse DSO/DOA department

Gérard Rey (gerard.rey@meteo.fr)

Hugues Jardat (hugues.jardat@meteo.fr)