

Joint WMO/IOC Technical Commission for  
Oceanography - Ship Observation Team

**End-to-end report of the  
ASAP data dissemination  
performance  
January to March  
2013**

## 1. Introduction

Météo-France is in charge of a end-to-end report of the ASAP data dissemination performance.

The matter of this paper is to evaluate the results of the three last months (January 2013 – March 2013).

## 2. Information available at Météo-France

TEMP-SHIP messages are received at LFPW (Toulouse) from EGRR (Exeter), EDZW (Offenbach) and Email.

The following information is available :

Reception at LFPW	Broadcast by LFPW
Call sign	Call sign
Header	Channel
Channel	Broadcast date
Reception date	Time lapse
Size	Broadcast size
Format	Recipient
Error	
Operator	

### 3. List of call signs available

<b>Country</b>	<b>Call sign</b>	<b>Country</b>	<b>Call sign</b>
Denmark	ASDK01	Japan	JCCX
	ASDK02		JGQH
	ASDK3		JIVB
E-ASAP	ASEU01		JDWX
	ASEU02		JNSR
	ASEU03		JDSS
	ASEU04	Spain	ASES01
	ASEU05	USA	WTEC
	ASEU06		
France	ASFR1		
	ASFR2		
	ASFR3		
	ASFR4		
Germany	ASDE01		
	ASDE02		
	ASDE03		
	ASDE04	Test	SHIP
	DBLK		ASDE09
	DFCG		

#### 4. Origin of the messages

Call sign	Offenbach	Exeter	Email	Mariner	Supervis	X25	Erreur
ASEU01	136	0	0	0	0	0	0
ASEU02	176	0	0	0	0	0	0
ASEU03	96	0	0	0	0	0	0
ASEU04	208	0	0	0	0	0	0
ASEU05	222	0	0	0	0	0	0
ASEU06	152	0	0	0	0	0	0
ASDE01	362	0	0	0	0	0	0
ASDE02	130	0	0	0	0	0	0
ASDE03	268	0	0	0	0	0	0
ASDE04	246	0	0	0	0	0	0
DBLK	502	0	0	0	0	0	0
ASDK01	208	0	0	0	0	0	0
ASDK02	98	0	0	0	0	0	0
ASDK3	288	0	0	0	0	0	0
ASES01	220	0	0	0	0	0	0
ASFR1	0	0	111	0	0	0	0
ASFR2	0	0	290	0	0	0	0
ASFR3	0	0	296	0	0	0	73
ASFR4	0	0	122	0	0	0	6
JGQH	0	250	0	0	0	0	0
JDSS	0	6	0	0	0	0	0
Test							
ASDE09	46	0	0	0	0	0	0
Wrong or strange call sign							
XXXXX	365	0	75	0	0	0	8

Mariner: French navy military sounding  
 Supervis: handled by operator

## 5. Global system performance

Month	Origin	Nb of messages received	Nb of messages in error	Percentage of messages in error	Nb of messages with operator action	Percentage of messages with operator action
2013-Jan	Offenbach	1178	0	0		
	Exeter	78	0	0		
	Telex	0	not relevant	not relevant		
	Email	387	not relevant	not relevant		
	Mariner	0	not relevant	not relevant		
	X25	0	not relevant	not relevant		
	Supervis	0	0	not relevant		
	Total	1256	0	0	0	0
2013-Feb	Offenbach	1257	0	0		
	Exeter	114	0	0		
	Telex	0	not relevant	not relevant		
	Email	267	not relevant	not relevant		
	Mariner	0	not relevant	not relevant		
	X25	0	not relevant	not relevant		
	Supervis	0	0	not relevant		
	Total	1371	0	0	0	0
2013-Mar	Offenbach	1288	0	0		
	Exeter	64	0	0		
	Telex	0	not relevant	not relevant		
	Email	240	not relevant	not relevant		
	Mariner	0	not relevant	not relevant		
	X25	0	not relevant	not relevant		
	Supervis	0	0	not relevant		
	Total	1352	0	0	0	0
Total	Offenbach	3723	0	0		
	Exeter	256	0	0		
	Telex	0	0	not relevant		
	Email	894	87	9,73		
	Mariner	0	not relevant	not relevant		
	X25	0	not relevant	not relevant		
	Supervis	0	0	not relevant		
	Total	4873	0	0	0	0

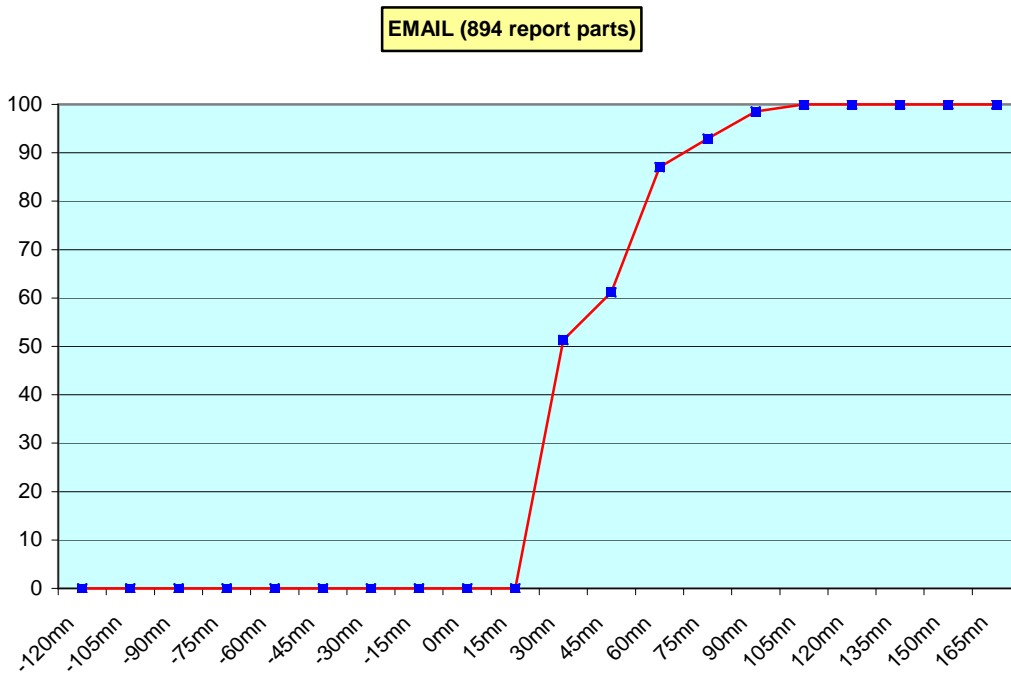
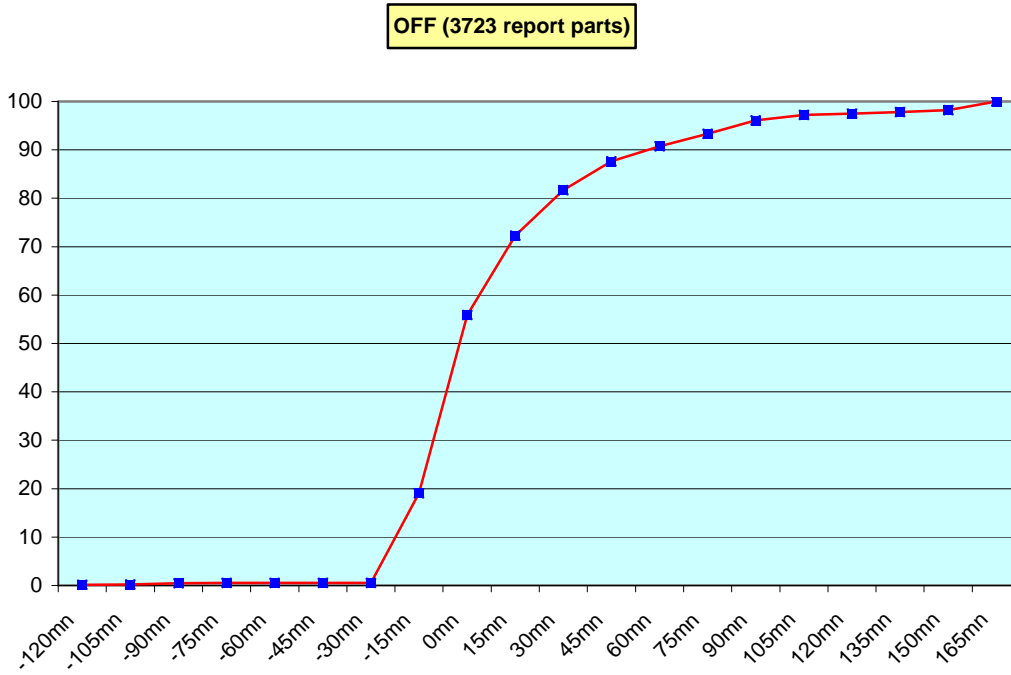
**Remark:** Email messages were excluded from the number of messages in error and from the relative percentage as values are regarded as not relevant. Not relevant percentages are due to not relevant values or to a total amount of data equal to zero.

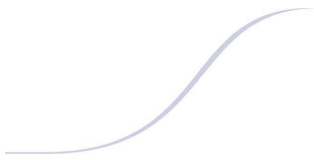
## 6. Global result of the syntactic check for the messages for each call sign.

Call sign	Nb of messages received	Nb of messages in error	Percentage of messages in error	Nb of messages with operator action	Percentage of messages with operator action
ASEU01	136	0	0	0	0
ASEU02	176	0	0	0	0
ASEU03	96	0	0	0	0
ASEU04	208	0	0	0	0
ASEU05	222	0	0	0	0
ASEU06	152	0	0	0	0
ASDE01	362	0	0	0	0
ASDE02	130	0	0	0	0
ASDE03	268	0	0	0	0
ASDE04	246	0	0	0	0
DBLK	502	0	0	0	0
ASDK01	208	0	0	0	0
ASDK02	98	0	0	0	0
ASDK3	288	0	0	0	0
ASES01	220	0	0	0	0
ASFR1	111	0	0	0	0
ASFR2	290	0	0	0	0
ASFR3	296	0	0	0	0
ASFR4	122	0	0	0	0
JGQH	250	0	0	0	0
JDSS	6	0	0	0	0
Test					
ASDE09	46	0	0	0	0
Wrong or strange call sign					
XXXXX	440	0	0	0	0

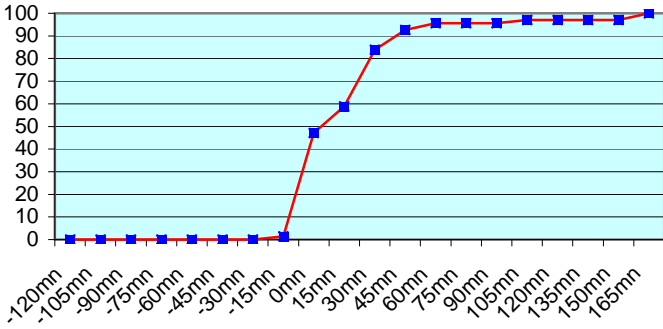
**Remark:** Data transmitted through email displayed an error rate close to 100% due to email syntax and were thus regarded as not relevant and excluded from errors total amount.

7. Mean time before the integration of the messages in the GTS in Toulouse. HH is the synoptic hour of reference.

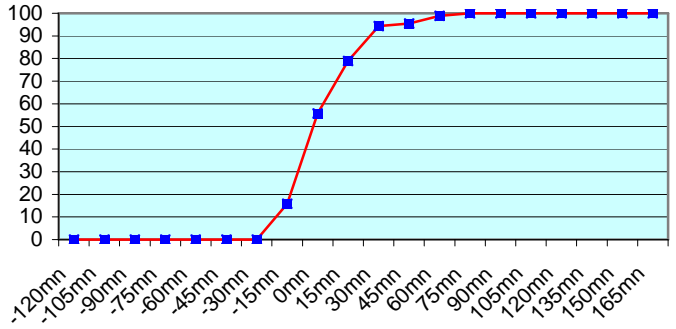




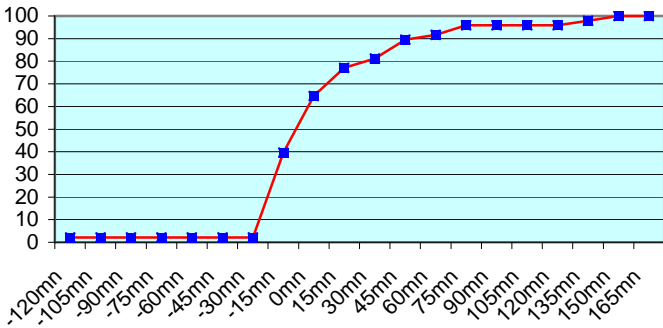
**ASEU01 (136 report parts) Offenbach 136**



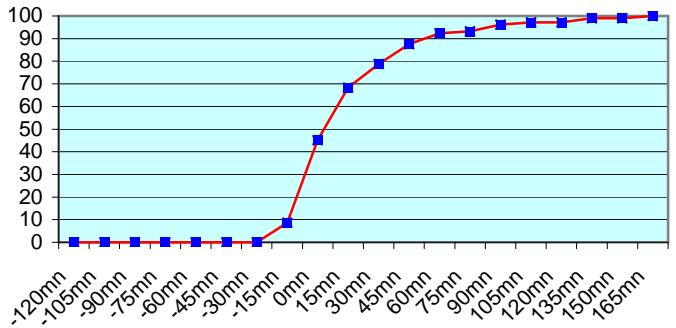
**ASEU02 (176 report parts) Offenbach 176**



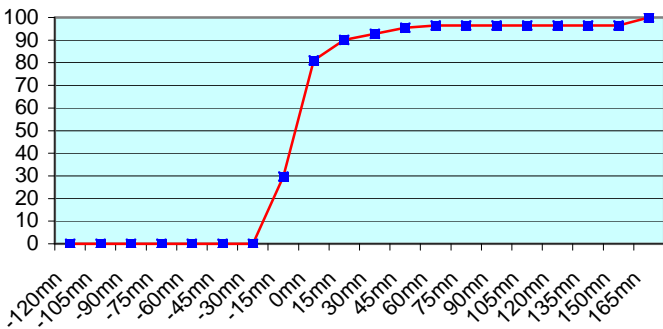
**ASEU03 (96 report parts) Offenbach 96**



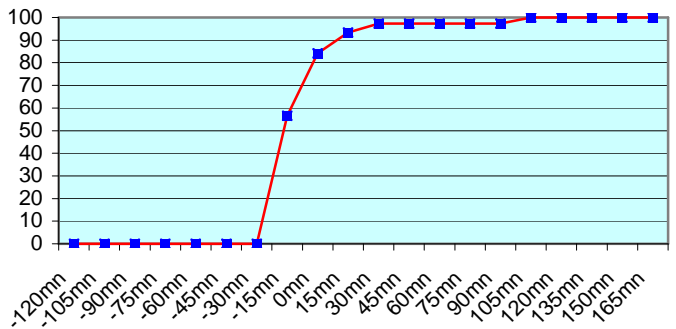
**ASEU04 (208 report parts) Offenbach 208**



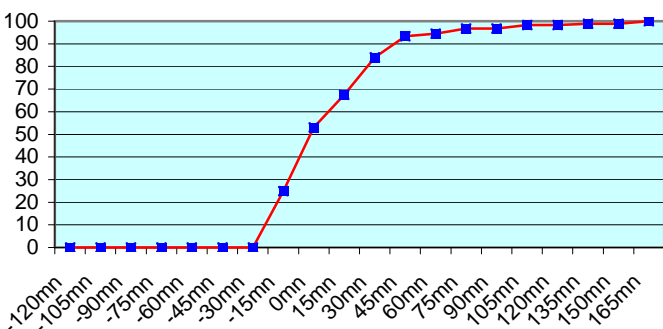
**ASEU05 (222 report parts) Offenbach 222**



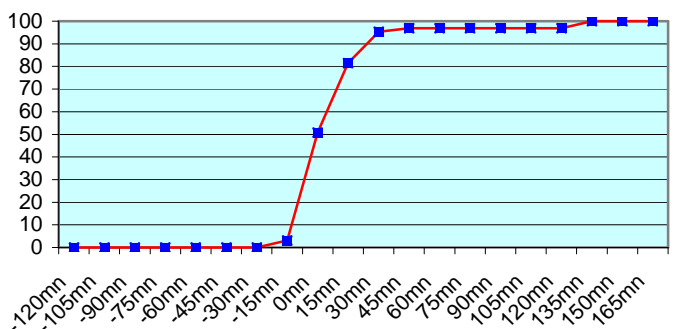
**ASEU06 (152 report parts) Offenbach 152**



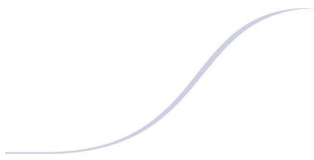
**ASDE01 (362 report parts) Offenbach 362**



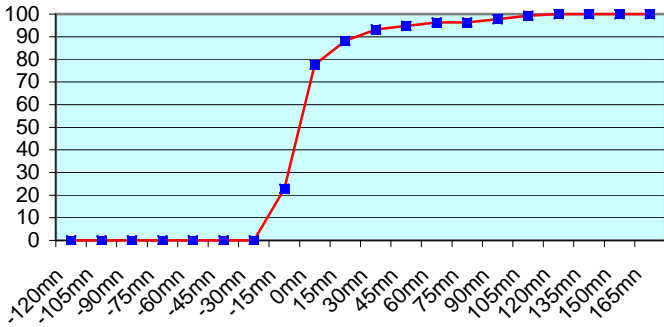
**ASDE02 (130 report parts) Offenbach 130**



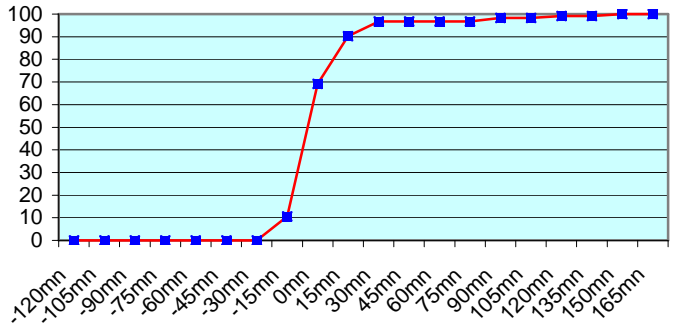




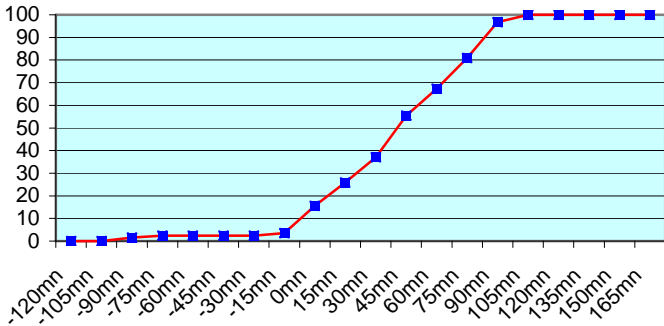
**ASDE03 (268 report parts) Offenbach 268**



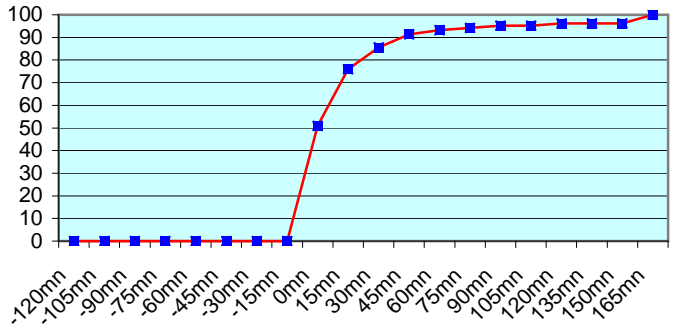
**ASDE04 (246 report parts) Offenbach 246**



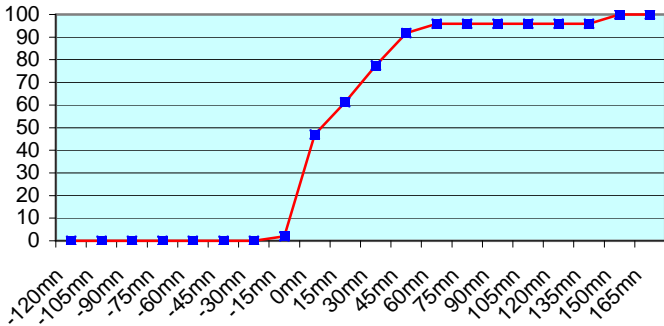
**DBLK (502 report parts) Offenbach 502**



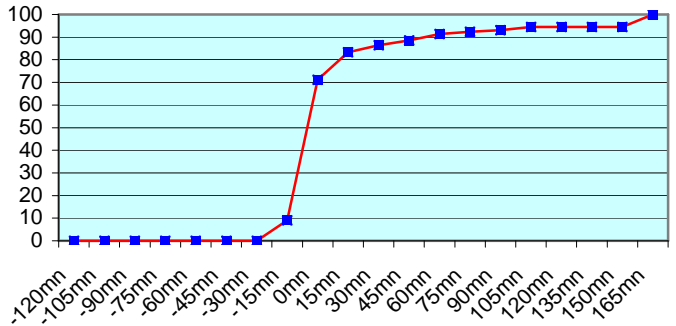
**ASDK01 (208 report parts) Offenbach 208**



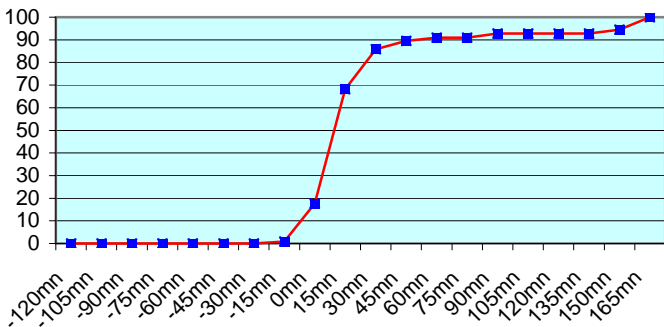
**ASDK02 (98 report parts) Offenbach 98**



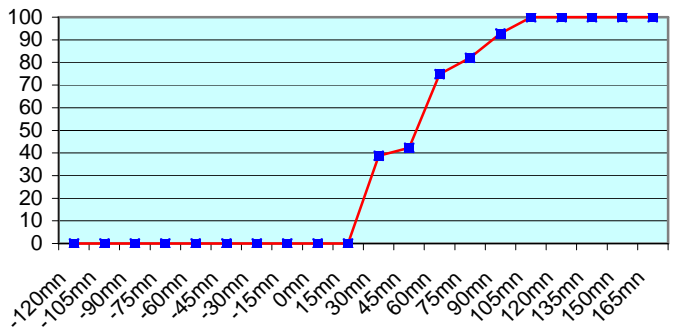
**ASDK3 (288 report parts) Offenbach 288**



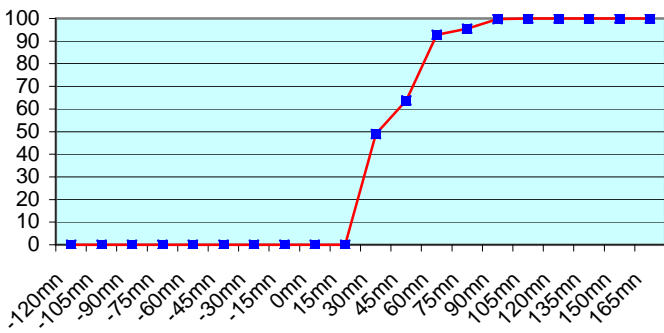
**ASES01 (220 report parts) Offenbach 220**



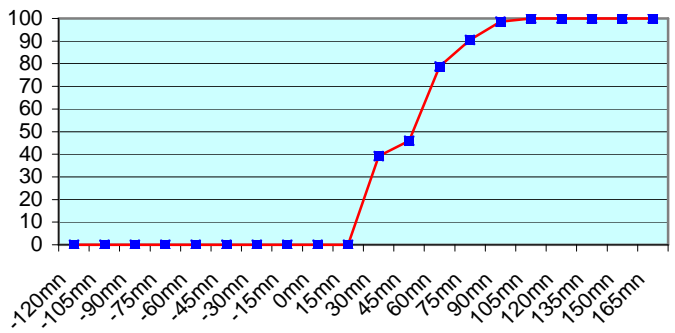
**ASFR1 (111 report parts) Email 111**



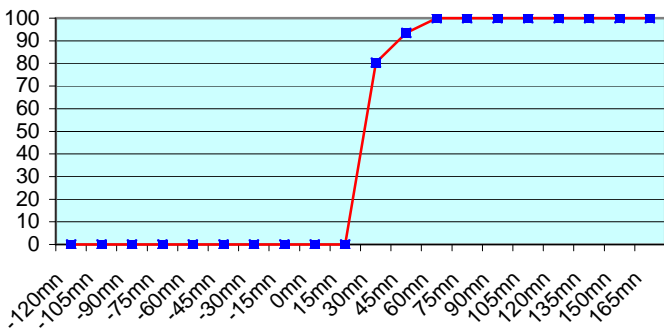
ASFR2 (290 report parts) Email 290



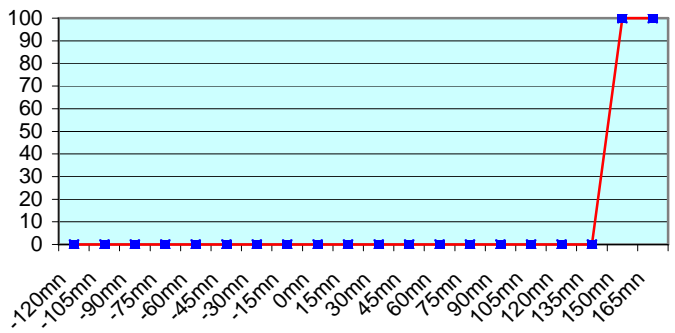
ASFR3 (296 report parts) Email 296



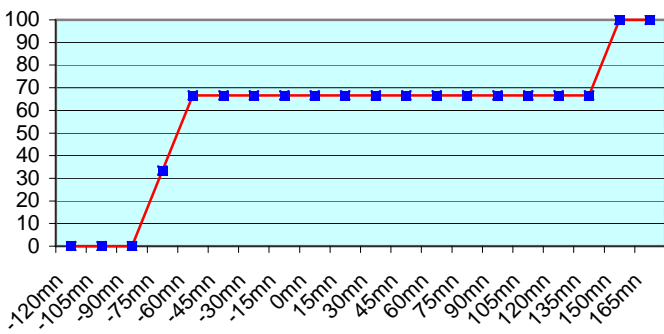
ASFR4 (122 report parts) Email 122



JGQH (250 report parts) Exeter 250



JDSS (6 report parts) Exeter 6



No particular problem was noticed concerning the European ships. Japanese ship follow a different procedure with an important shift between the sending of the message and the synoptic hour. So, no graphic was displayed about Exeter.

For any comment or remark please contact Météo-France Toulouse DSO/DOA department

Gérard Rey ([gerard.rey@meteo.fr](mailto:gerard.rey@meteo.fr))

Hugues Jardat ([hugues.jardat@meteo.fr](mailto:hugues.jardat@meteo.fr))