

Joint WMO/IOC Technical Commission for
Oceanography - Ship Observation Team

**End-to-end report of the
ASAP data dissemination
performance
2013
January to December**

1. Introduction

Météo-France is in charge of a end-to-end report of the ASAP data dissemination performance.

The matter of this paper is to evaluate the results of the last year (January 2013 – December 2013).

2. Information available at Météo-France

TEMP-SHIP messages are received at LFPW (Toulouse) from EGRR (Exeter), EDZW (Offenbach) and Email.

The following information is available :

Reception at LFPW	Broadcast by LFPW
Call sign	Call sign
Header	Channel
Channel	Broadcast date
Reception date	Time lapse
Size	Broadcast size
Format	Recipient
Error	
Operator	

3. List of call signs available

Country	Call sign	Country	Call sign
Denmark	ASDK01	Japan	JGQH
	ASDK02		JNSR
	ASDK3		JDSS
E-ASAP	ASEU01		
	ASEU02		
	ASEU03		
	ASEU04		
	ASEU05		
	ASEU06		
France	ASFR1		
	ASFR2		
	ASFR3		
	ASFR4		
Germany	ASDE01		
	ASDE02		
	ASDE03		
	ASDE04	Test	SHIP
	DBLK		ASDE09
Spain	ASES01		

4. Origin of the messages

Call sign	Offenbach	Exeter	Telex	Email	Mariner	Supervis	X25
ASEU01	722	0	0	0	0	0	0
ASEU02	821	0	0	0	0	0	0
ASEU03	390	0	0	0	0	0	0
ASEU04	602	0	0	0	0	0	0
ASEU05	948	0	0	0	0	0	0
ASEU06	676	0	0	0	0	0	0
ASDE01	1082	0	0	0	0	0	0
ASDE02	624	0	0	0	0	0	0
ASDE03	960	0	0	0	0	0	0
ASDE04	942	0	0	0	0	0	0
DBLK	1473	0	0	0	0	0	0
ASDK01	451	0	0	0	0	0	0
ASDK02	972	0	0	0	0	0	0
ASDK3	1329	0	0	0	0	0	0
ASES01	848	0	0	0	0	0	0
ASFR1	0	0	0	1036	0	0	0
ASFR2	0	0	0	1013	0	0	0
ASFR3	0	0	0	953	0	0	0
ASFR4	0	0	0	776	0	0	0
JGQH	0	668	0	0	0	0	0
JNSR	0	1928	0	0	0	0	0
JDSS	0	78	0	0	0	0	0
Test							
ASDE09	136	0	0	0	0	0	0
SHIP	63	0	0	0	0	0	0
Wrong or strange call sign							
XXXXX	1213	0	0	304	0	0	0
numer.	3	0	0	0	0	0	0

Mariner: French navy military sounding
 Supervis: handled by operator

5. Global system performance

Month	Origin	Nb of messages received	Nb of messages in error	Percentage of messages in error	Nb of messages with operator action	Percentage of messages with operator action
2013-Jan	Offenbach	1178	0	0		
	Exeter	78	0	0		
	Telex	0	not relevant	not relevant		
	Email	387	not relevant	not relevant		
	Mariner	0	not relevant	not relevant		
	X25	0	not relevant	not relevant		
	Supervis	0	0	not relevant		
	Total	1643	0	0	0	0
2013-Feb	Offenbach	1257	0	0		
	Exeter	114	0	0		
	Telex	0	not relevant	not relevant		
	Email	267	not relevant	not relevant		
	Mariner	0	not relevant	not relevant		
	X25	0	not relevant	not relevant		
	Supervis	0	0	not relevant		
	Total	1638	0	0	0	0
2013-Mar	Offenbach	1288	0	0		
	Exeter	64	0	0		
	Telex	0	not relevant	not relevant		
	Email	240	not relevant	not relevant		
	Mariner	0	not relevant	not relevant		
	X25	0	not relevant	not relevant		
	Supervis	0	0	not relevant		
	Total	1593	0	0	0	0
2013-Apr	Offenbach	1508	4	0,27		
	Exeter	20	0	0		
	Telex	0	not relevant	not relevant		
	Email	387	not relevant	not relevant		
	Mariner	0	not relevant	not relevant		
	X25	0	not relevant	not relevant		
	Supervis	0	0	not relevant		
	Total	1915	4	0,26	0	0
2013-May	Offenbach	1713	32	1,87		
	Exeter	91	0	0		
	Telex	0	not relevant	not relevant		
	Email	426	not relevant	not relevant		
	Mariner	0	not relevant	not relevant		
	X25	0	not relevant	not relevant		
	Supervis	0	0	not relevant		
	Total	2230	32	1,77	0	0
2013-Jun	Offenbach	1254	0	0		
	Exeter	646	0	0		
	Telex	0	not relevant	not relevant		
	Email	433	not relevant	not relevant		
	Mariner	0	not relevant	not relevant		
	X25	0	not relevant	not relevant		
	Supervis	0	0	not relevant		
	Total	2333	0	0	0	0

2013-Jul	Offenbach	1329	0	0		
	Exeter	136	0	0		
	Telex	0	not relevant	not relevant		
	Email	429	not relevant	not relevant		
	Mariner	0	not relevant	not relevant		
	X25	0	not relevant	not relevant		
	Supervis	0	0	not relevant		
	Total	1894	0	0	0	0
2013-Aug	Offenbach	1182	0	0		
	Exeter	182	0	0		
	Telex	0	not relevant	not relevant		
	Email	369	not relevant	not relevant		
	Mariner	0	not relevant	not relevant		
	X25	0	not relevant	not relevant		
	Supervis	0	0	not relevant		
	Total	1733	0	0	0	0
2013-Sep	Offenbach	972	0	0		
	Exeter	951	0	0		
	Telex	0	not relevant	not relevant		
	Email	355	not relevant	not relevant		
	Mariner	0	not relevant	not relevant		
	X25	0	not relevant	not relevant		
	Supervis	0	0	not relevant		
	Total	2278	0	0	0	0
2013-Oct	Offenbach	970	0	0		
	Exeter	293	0	0		
	Telex	0	not relevant	not relevant		
	Email	170	not relevant	not relevant		
	Mariner	0	not relevant	not relevant		
	X25	0	not relevant	not relevant		
	Supervis	0	0	not relevant		
	Total	1433	0	0	0	0
2013-Nov	Offenbach	944	0	0		
	Exeter	66	0	0		
	Telex	0	not relevant	not relevant		
	Email	353	not relevant	not relevant		
	Mariner	0	not relevant	not relevant		
	X25	0	not relevant	not relevant		
	Supervis	0	0	not relevant		
	Total	1363	0	0	0	0
2013-Dec	Offenbach	660	0	0		
	Exeter	33	0	0		
	Telex	0	not relevant	not relevant		
	Email	266	not relevant	not relevant		
	Mariner	0	not relevant	not relevant		
	X25	0	not relevant	not relevant		
	Supervis	0	0	not relevant		
	Total	959	0	0	0	0
Total	Offenbach	14255	36	0,25		
	Exeter	2674	0	0		
	Telex	0	not relevant	not relevant		
	Email	4082	not relevant	not relevant		
	Mariner	0	not relevant	not relevant		
	X25	0	not relevant	not relevant		
	Supervis	0	0	not relevant		
	Total	21011	36	0,21	0	0

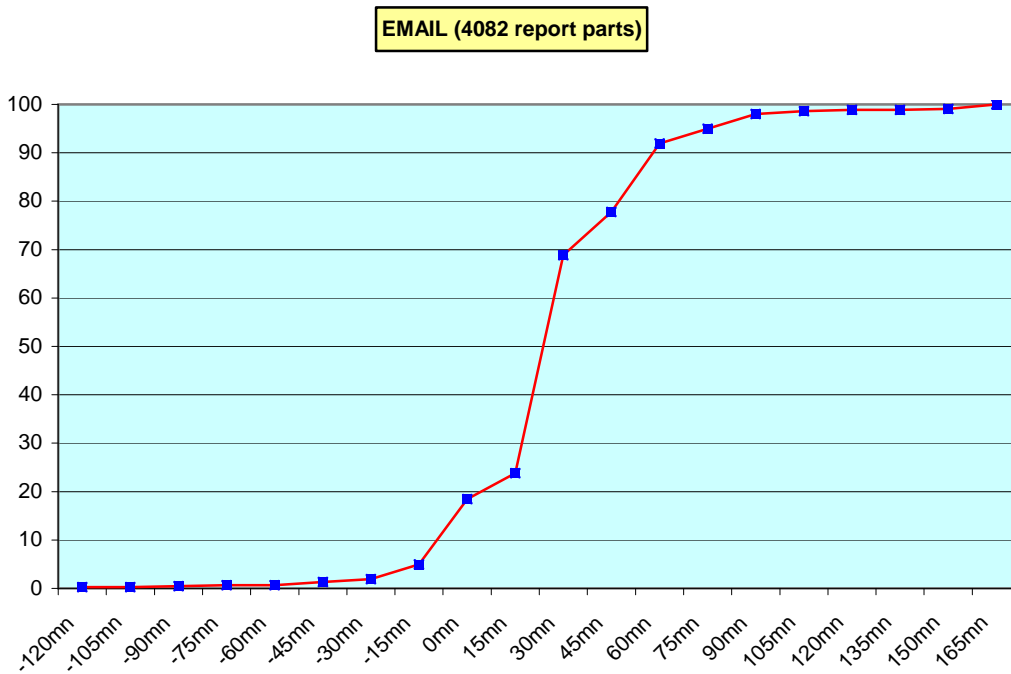
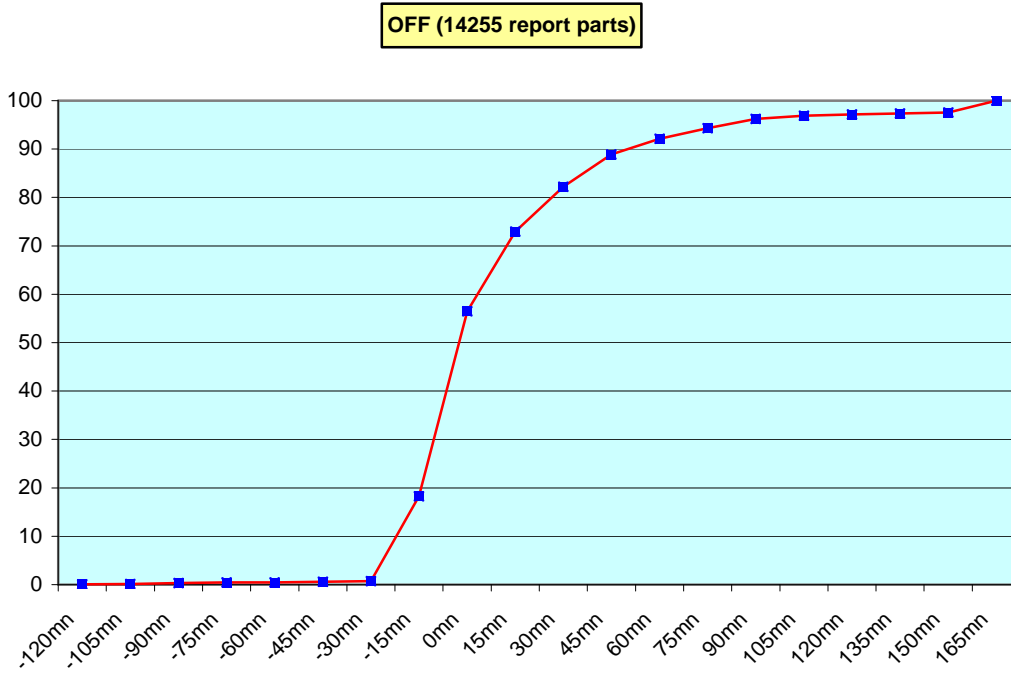
Remark: Email messages were excluded from the number of messages in error and from the relative percentage as values are regarded as not relevant. Not relevant percentages are due to not relevant values or to a total amount of data equal to zero.

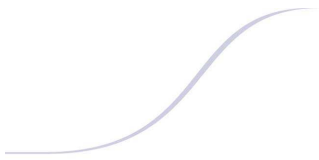
6. Global result of the syntactic check for the messages for each call sign.

Call sign	Nb of messages received	Nb of messages in error	Percentage of messages in error	Nb of messages with operator action	Percentage of messages with operator action
ASEU01	722	0	0	0	0
ASEU02	821	0	0	0	0
ASEU03	390	0	0	0	0
ASEU04	602	0	0	0	0
ASEU05	948	0	0	0	0
ASEU06	676	0	0	0	0
ASDE01	1082	0	0	0	0
ASDE02	624	0	0	0	0
ASDE03	960	0	0	0	0
ASDE04	942	0	0	0	0
DBLK	1473	0	0	0	0
ASDK01	451	24	5,32	0	0
ASDK02	972	3	0,31	0	0
ASDK3	1329	0	0	0	0
ASES01	848	0	0	0	0
ASFR1	1036	0	0	0	0
ASFR2	1013	0	0	0	0
ASFR3	953	0	0	0	0
ASFR4	776	0	0	0	0
JGQH	668	0	0	0	0
JNSR	1928	0	0	0	0
JDSS	78	0	0	0	0
Test					
ASDE09	136	0	0	0	0
SHIP	63	0	0	0	0
Wrong or strange call sign					
XXXXX	1517	9	0,59	0	0
numer,	3	0	0	0	0

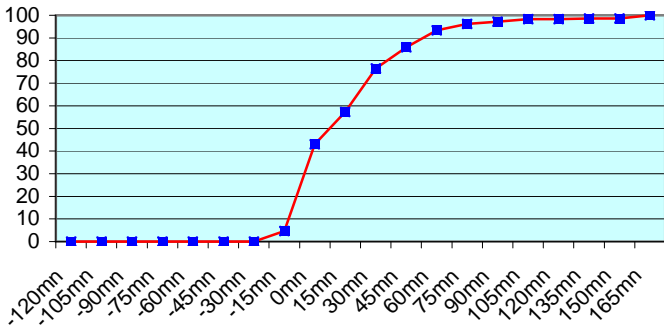
Remark: Data transmitted through email displayed an error rate close to 100% due to email syntax and were thus regarded as not relevant and excluded from errors total amount.

7. Mean time before the integration of the messages in the GTS in Toulouse. HH is the synoptic hour of reference.

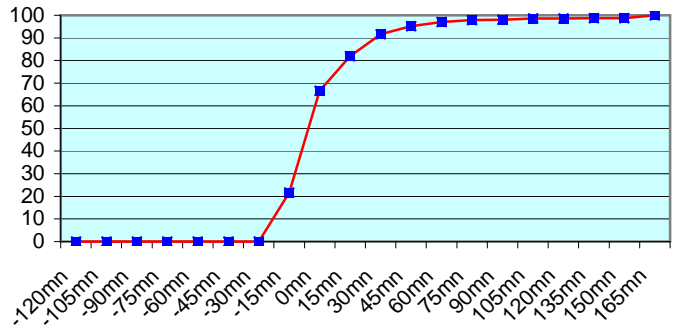




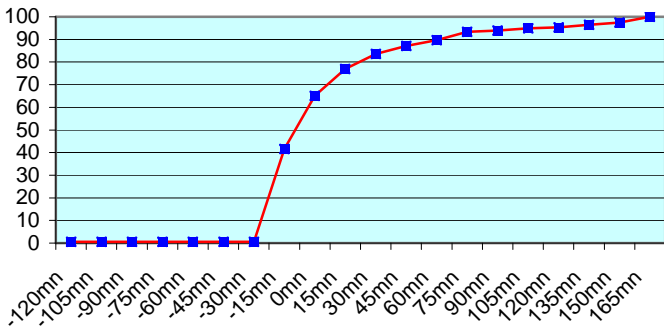
ASEU01 (722 report parts) Offenbach 722



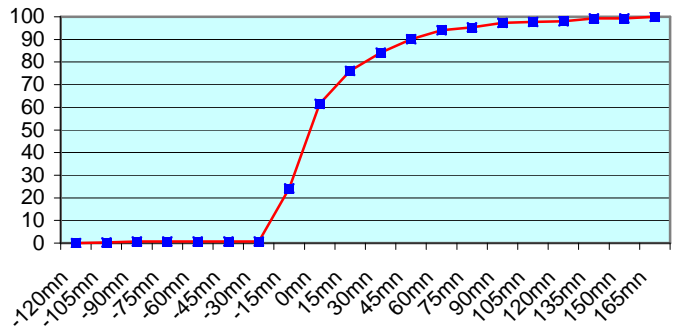
ASEU02 (821 report parts) Offenbach 821



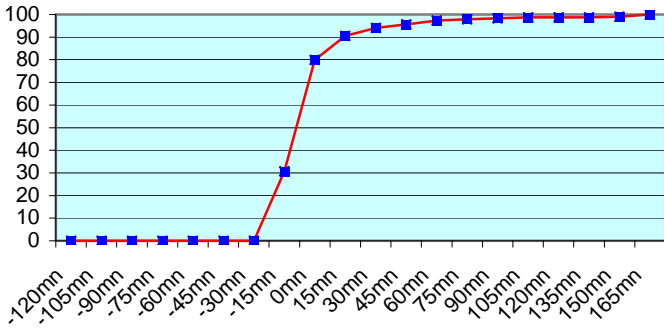
ASEU03 (390 report parts) Offenbach 390



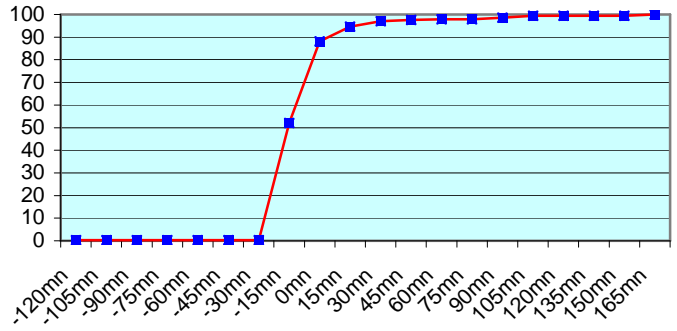
ASEU04 (602 report parts) Offenbach 602



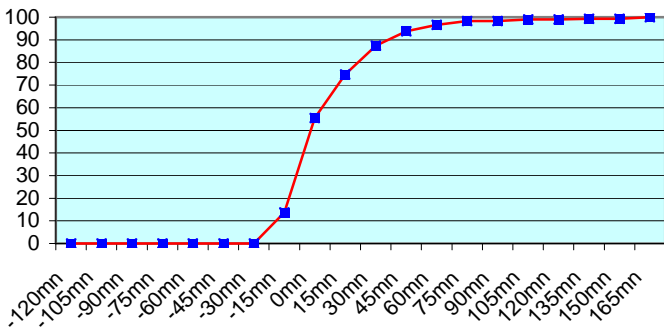
ASEU05 (948 report parts) Offenbach 948



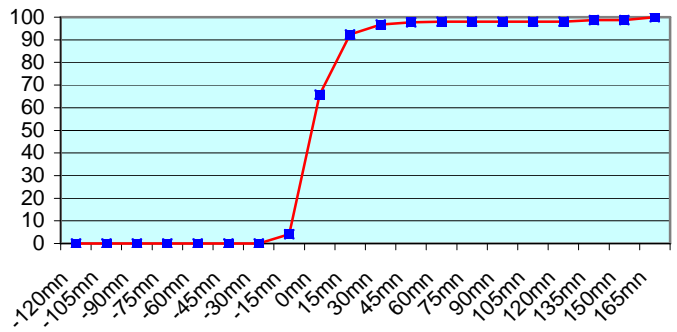
ASEU06 (676 report parts) Offenbach 676



ASDE01 (1082 report parts) Offenbach 1082

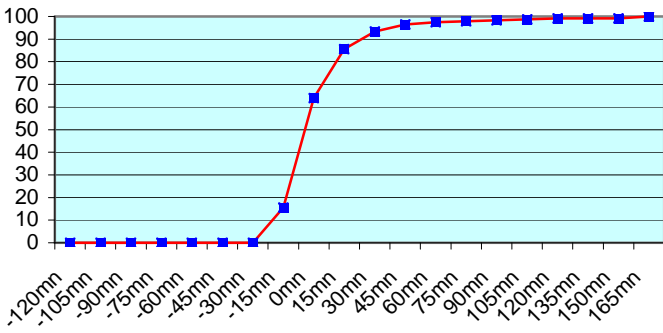


ASDE02 (624 report parts) Offenbach 624

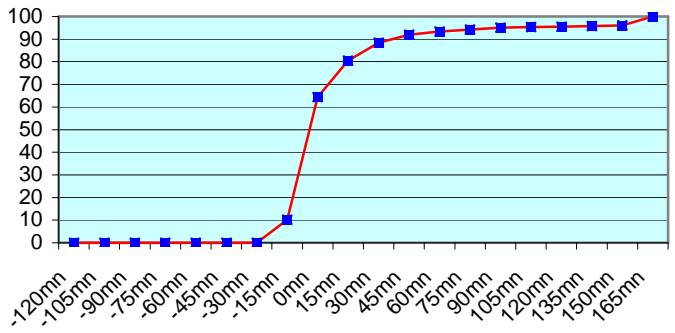




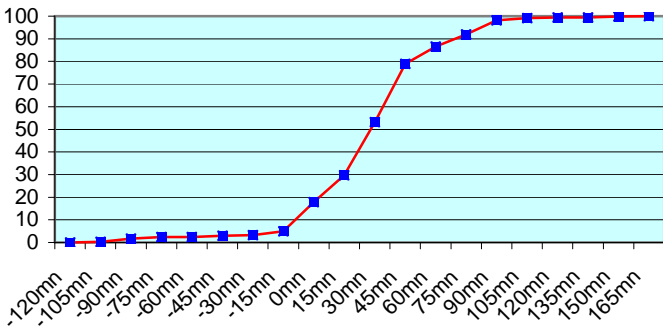
ASDE03 (960 report parts) Offenbach 960



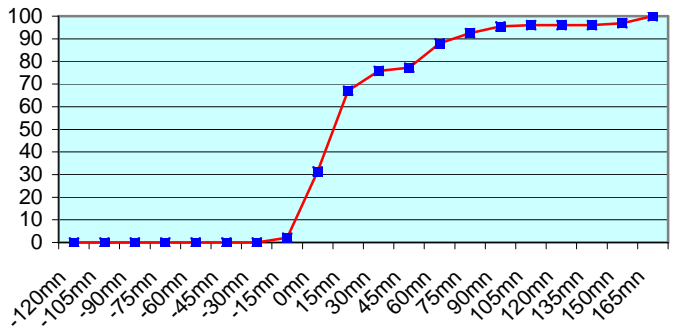
ASDE04 (942 report parts) Offenbach 942



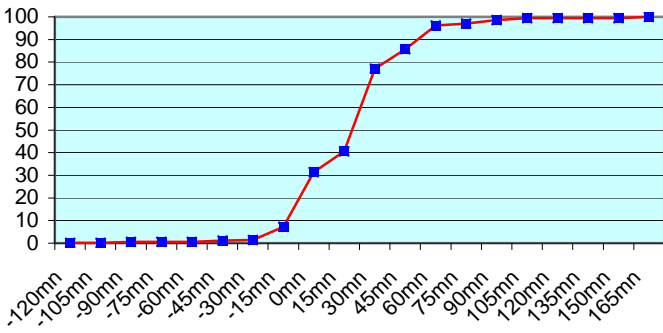
DBLK (1473 report parts) Offenbach 1473



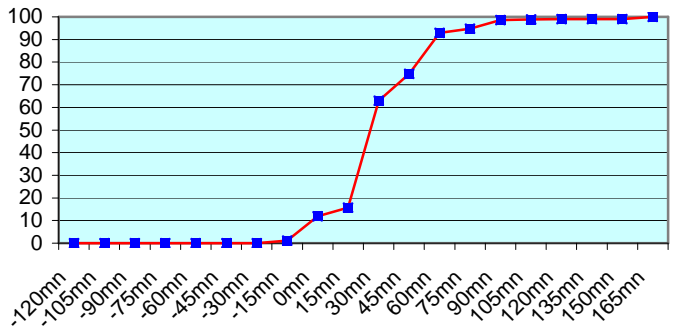
ASES01 (848 report parts) Offenbach 848



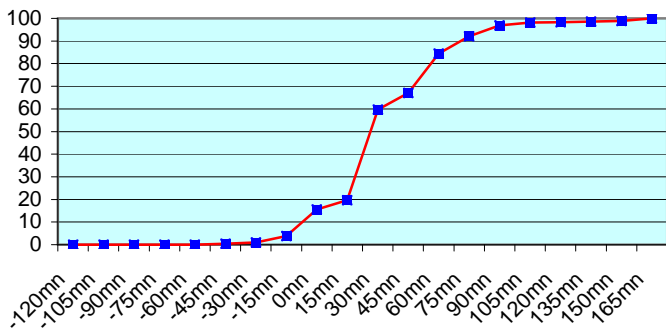
ASFR1 (1036 report parts) Email 1036



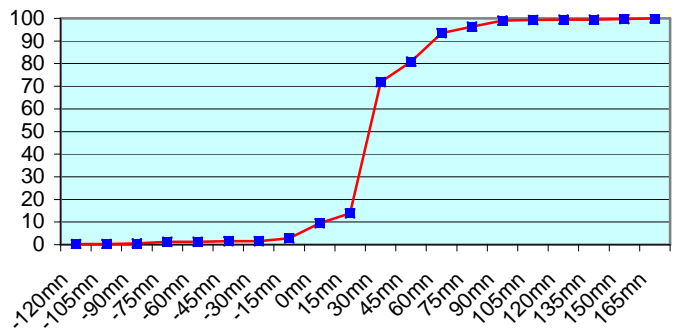
ASFR2 (1013 report parts) Email 1013



ASFR3 (953 report parts) Email 953

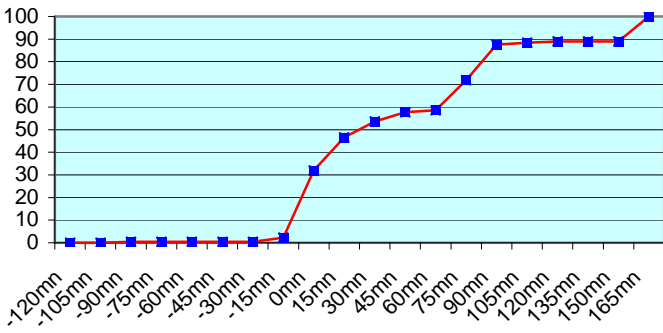


ASFR4 (776 report parts) Email 776

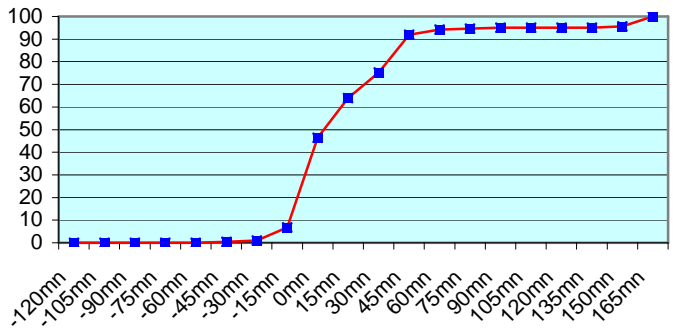




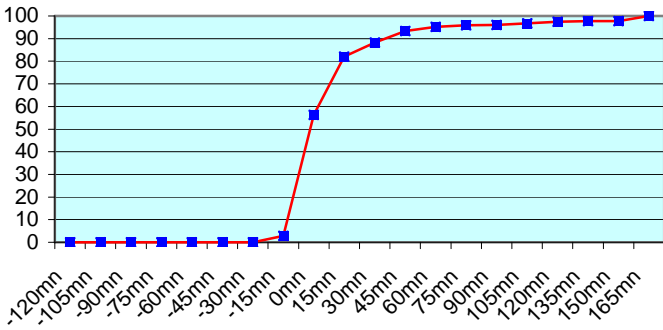
ASDK01 (451 report parts) Offenbach 451



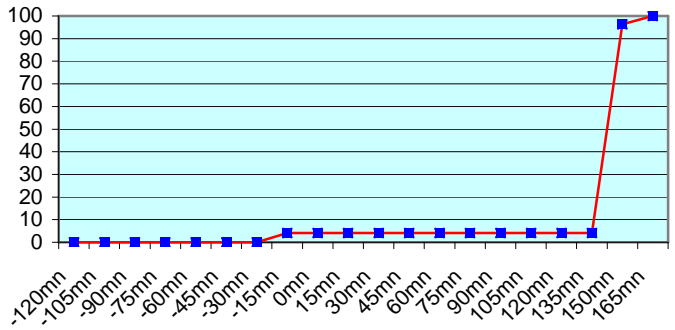
ASDK02 (972 report parts) Offenbach 972



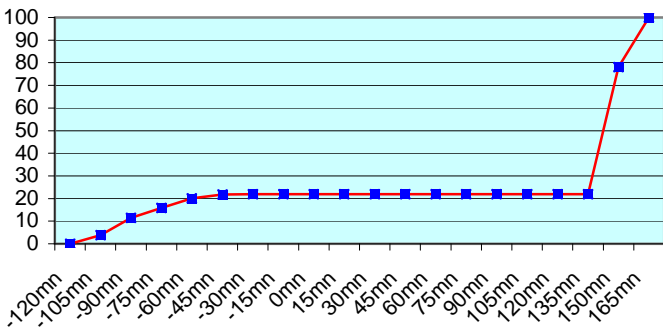
ASDK3 (1329 report parts) Offenbach 1329



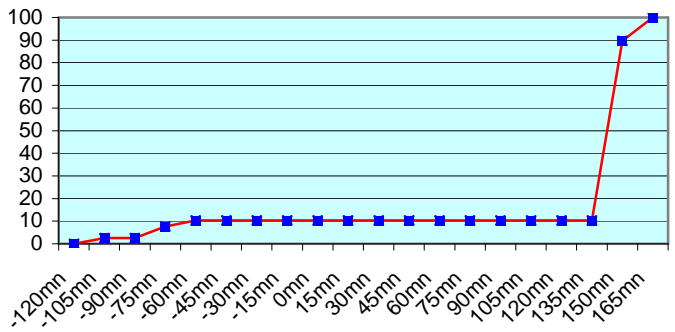
JGQH (668 report parts) Exeter 668



JNSR (1928 report parts) Exeter 1928



JDSS (78 report parts) Exeter 78



During 2013, Météo-France Toulouse received 5252 upper air messages (TEMP) from ships. This number of messages is substantially the same compared to 2012 (5161).

Call Sign	Messages received in 2012	Messages received in 2013	Difference 2013-2012
ASEU01	683	722	+39
ASEU02	686	821	+135
ASEU03	430	390	-40
ASEU04	360	602	+242
ASEU05	755	948	+193
ASEU06	933	676	-257
ASDE01	1435	1082	-353
ASDE02	1442	624	-818
ASDE03	1070	960	-110
ASDE04	1041	942	-99
DBLK	1471	1473	+2
ASDK01	1108	451	-657
ASDK02	459	972	+513
ASDK3	1235	1329	+94
ASES01	973	848	-125
ASFR1	1028	1036	+8
ASFR2	793	1013	+220
ASFR3	1002	953	-49
ASFR4	910	776	-134
JGQH	831	668	-163
JNSR	207	1928	+1721
JDSS	0	78	+78
Test (ASDE09 + SHIP)	103	199	+93
Wrong or strange call sign	1642	1216	-426

The reports were received from 24 different call signs; two of them were test call sign (ASDE09 and SHIP).

The quality of the ASAP reports was generally of a high standard, with only a small percentage of erroneous data.

Some corrupted call signs can be seen from time to time but less than in 2012 (-426 messages).

For any comment or remark please contact Météo-France Toulouse DSO/DOA department

Frédéric Marin (frederic.marin@meteo.fr)

Hugues Jardat (hugues.jardat@meteo.fr)