

Joint WMO/IOC Technical Commission for  
Oceanography - Ship Observation Team

**End-to-end report of the  
ASAP data dissemination  
performance  
October to December  
2012**

## 1. Introduction

Météo-France is in charge of a end-to-end report of the ASAP data dissemination performance.

The matter of this paper is to evaluate the results of the three last months (October 2012 – December 2012).

## 2. Information available at Météo-France

TEMP-SHIP messages are received at LFPW (Toulouse) from EGRR (Exeter), EDZW (Offenbach) and Email.

The following information is available :

Reception at LFPW	Broadcast by LFPW
Call sign	Call sign
Header	Channel
Channel	Broadcast date
Reception date	Time lapse
Size	Broadcast size
Format	Recipient
Error	
Operator	

### 3. List of call signs available

<b>Country</b>	<b>Call sign</b>	<b>Country</b>	<b>Call sign</b>
Denmark	ASDK01	Japan	JCCX
	ASDK02		JGQH
	ASDK3		JIVB
E-ASAP	ASEU01		JDWX
	ASEU02		JNSR
	ASEU03	South Africa	ZSAF
	ASEU04	Spain	ASES01
	ASEU05	USA	WTEC
	ASEU06		
France	ASFR1		
	ASFR2		
	ASFR3		
	ASFR4		
Germany	ASDE01		
	ASDE02		
	ASDE03		
	ASDE04	Test	SHIP
	DBLK		ASDE09
	DFCG		

#### 4. Origin of the messages

Call sign	Offenbach	Exeter	Telex	Email	Mariner	Supervis	X25
ASEU01	88	0	0	0	0	0	0
ASEU02	212	0	0	0	0	0	0
ASEU03	54	0	0	0	0	0	0
ASEU04	160	0	0	0	0	0	0
ASEU05	164	0	0	0	0	0	0
ASEU06	232	0	0	0	0	0	0
ASDE01	394	0	0	0	0	0	0
ASDE02	626	0	0	0	0	0	0
ASDE03	302	0	0	0	0	0	0
ASDE04	254	0	0	0	0	0	0
DBLK	332	0	0	0	0	0	0
ASDK01	306	0	0	0	0	0	0
ASDK02	87	0	0	0	0	0	0
ASDK3	300	0	0	0	0	0	0
ASES01	164	0	0	0	0	0	0
ASFR1	0	0	0	280	0	0	0
ASFR2	0	0	0	221	0	0	0
ASFR3	0	0	0	186	0	0	0
ASFR4	0	0	0	307	0	0	0
JGQH	0	73	0	0	0	0	0
Test							
ASDE09	54	0	0	0	0	0	0
Wrong or strange call sign							
XXXXX	250	0	0	104	0	0	0

Mariner: French navy military sounding  
 Supervis: handled by operator

## 5. Global system performance

Month	Origin	Nb of messages received	Nb of messages in error	Percentage of messages in error	Nb of messages with operator action	Percentage of messages with operator action
2012-Oct	Offenbach	1026	0	0		
	Exeter	0	0	0		
	Telex	0	not relevant	not relevant		
	Email	384	not relevant	not relevant		
	Mariner	0	not relevant	not relevant		
	X25	0	not relevant	not relevant		
	Supervis	0	0	not relevant		
	Total	1026	0	0	0	0
2012-Nov	Offenbach	1221	0	0		
	Exeter	16	0	0		
	Telex	0	not relevant	not relevant		
	Email	320	not relevant	not relevant		
	Mariner	0	not relevant	not relevant		
	X25	0	not relevant	not relevant		
	Supervis	0	0	not relevant		
	Total	1237	0	0	0	0
2012-Dec	Offenbach	1732	0	0		
	Exeter	57	0	0		
	Telex	0	not relevant	not relevant		
	Email	394	not relevant	not relevant		
	Mariner	0	not relevant	not relevant		
	X25	0	not relevant	not relevant		
	Supervis	0	0	not relevant		
	Total	1789	0	0	0	0
Total	Offenbach	3979	0	0		
	Exeter	73	0	0		
	Telex	0	0	not relevant		
	Email	1098	10	0,91		
	Mariner	0	not relevant	not relevant		
	X25	0	not relevant	not relevant		
	Supervis	0	0	not relevant		
	Total	5150	0	0	0	0

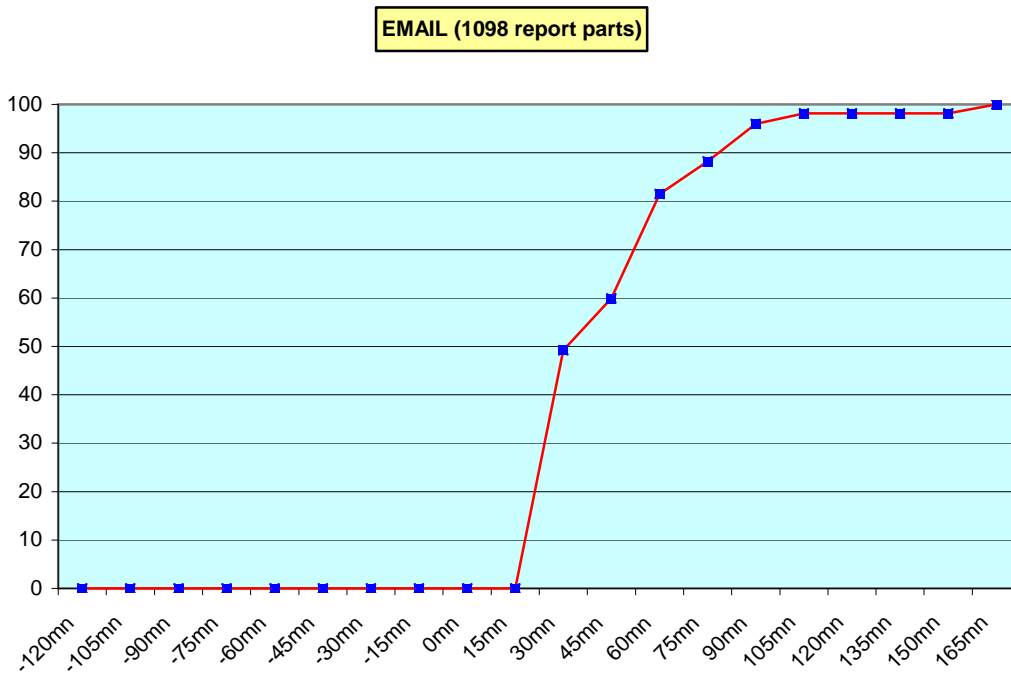
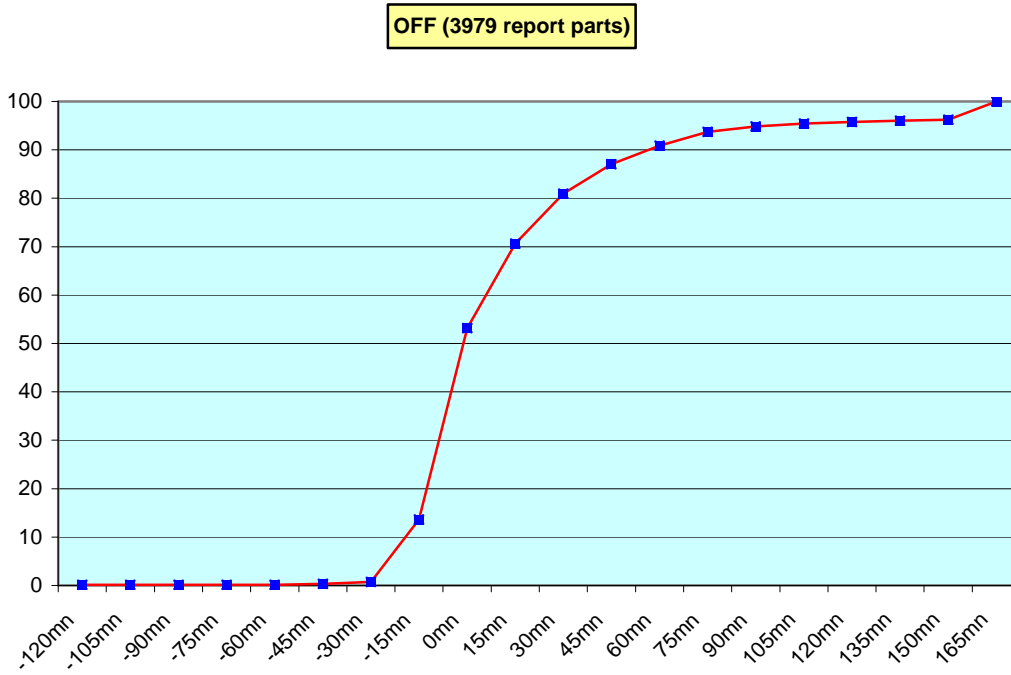
**Remark:** Email messages were excluded from the number of messages in error and from the relative percentage as values are regarded as not relevant. Not relevant percentages are due to not relevant values or to a total amount of data equal to zero.

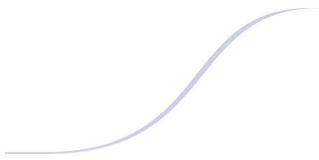
## 6. Global result of the syntactic check for the messages for each call sign.

Call sign	Nb of messages received	Nb of messages in error	Percentage of messages in error	Nb of messages with operator action	Percentage of messages with operator action
ASEU01	88	0	0	0	0
ASEU02	212	0	0	0	0
ASEU03	54	0	0	0	0
ASEU04	160	0	0	0	0
ASEU05	164	0	0	0	0
ASEU06	232	0	0	0	0
ASDE01	394	0	0	0	0
ASDE02	626	0	0	0	0
ASDE03	302	0	0	0	0
ASDE04	254	0	0	0	0
DBLK	332	0	0	0	0
ASDK01	306	0	0	0	0
ASDK02	87	0	0	0	0
ASDK3	300	0	0	0	0
ASES01	164	0	0	0	0
ASFR1	280	0	0	0	0
ASFR2	221	0	0	0	0
ASFR3	186	0	0	0	0
ASFR4	307	0	0	0	0
JGQH	73	0	0	0	0
Test					
ASDE09	54	0	0	0	0
Wrong or strange call sign					
XXXXX	354	0	0	0	0

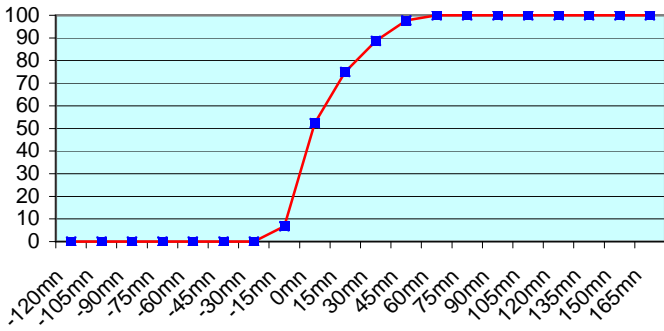
**Remark:** Data transmitted through email displayed an error rate close to 100% due to email syntax and were thus regarded as not relevant and excluded from errors total amount.

7. Mean time before the integration of the messages in the GTS in Toulouse. HH is the synoptic hour of reference.

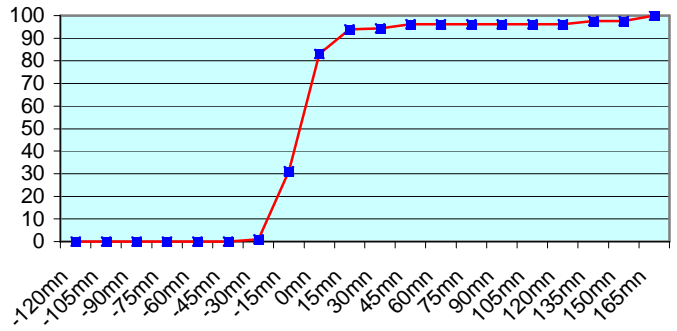




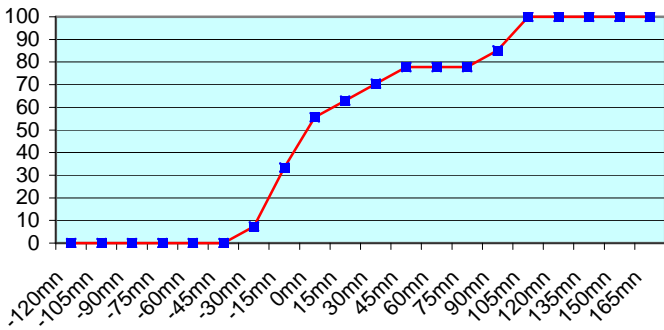
**ASEU01 (88 report parts) Offenbach 88**



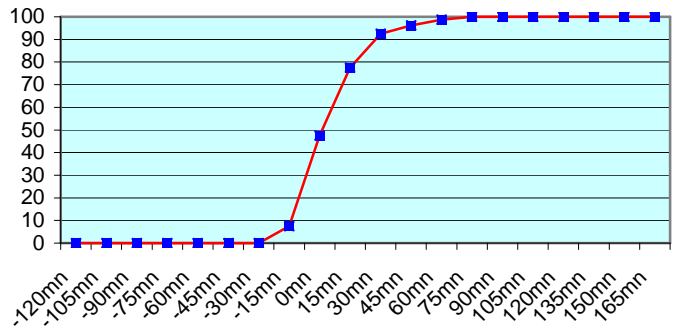
**ASEU02 (212 report parts) Offenbach 212**



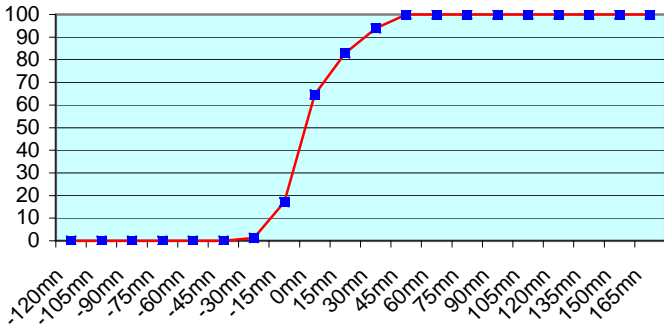
**ASEU03 (54 report parts) Offenbach 54**



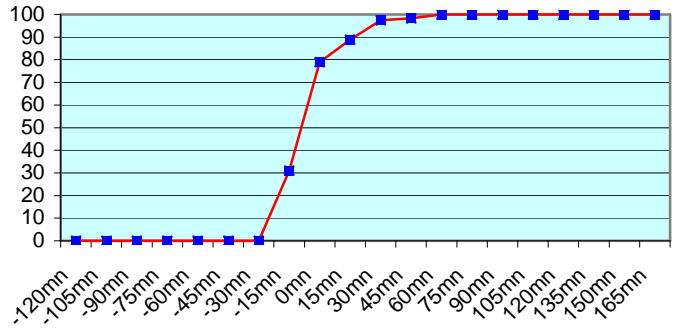
**ASEU04 (160 report parts) Offenbach 160**



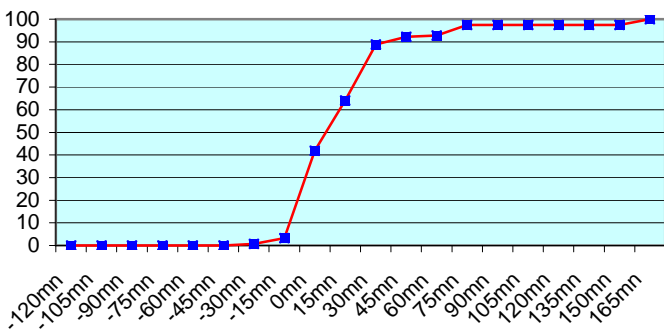
**ASEU05 (164 report parts) Offenbach 164**



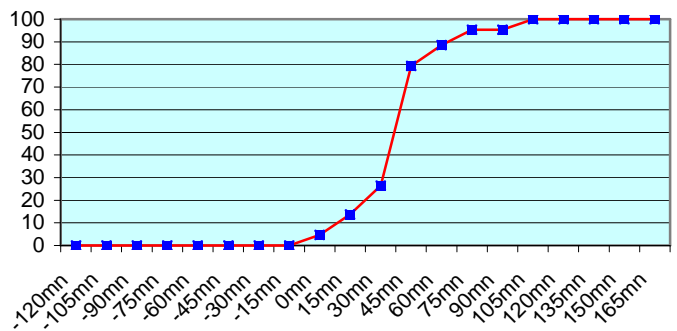
**ASEU06 (232 report parts) Offenbach 232**



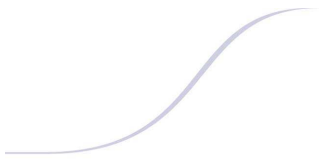
**ASDK01 (306 report parts) Offenbach 306**



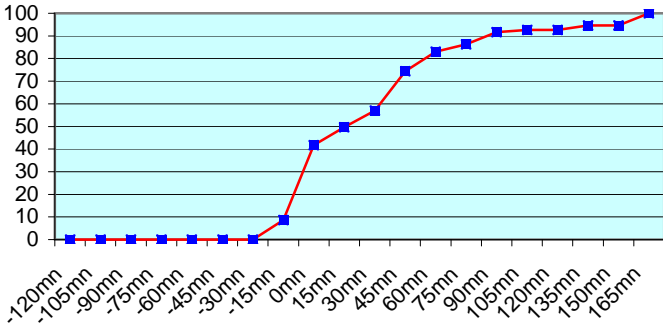
**ASDK02 (87 report parts) Offenbach 87**



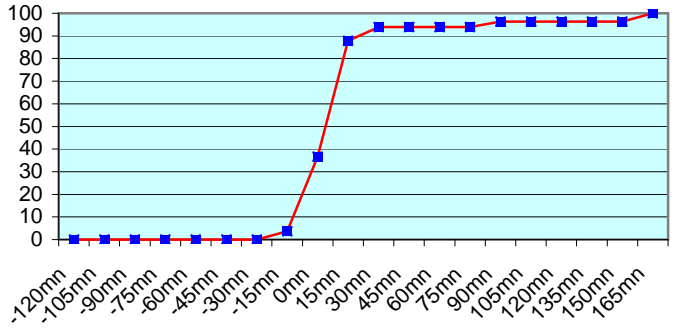




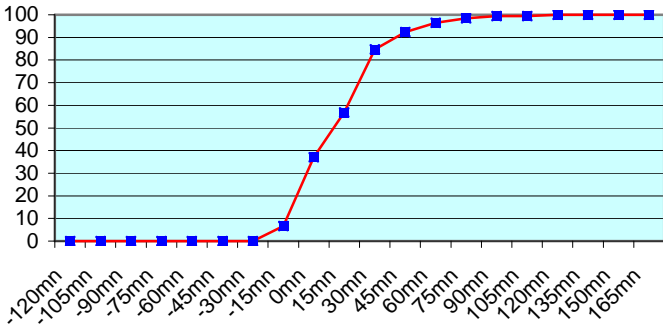
**ASDK3 (300 report parts) Offenbach 300**



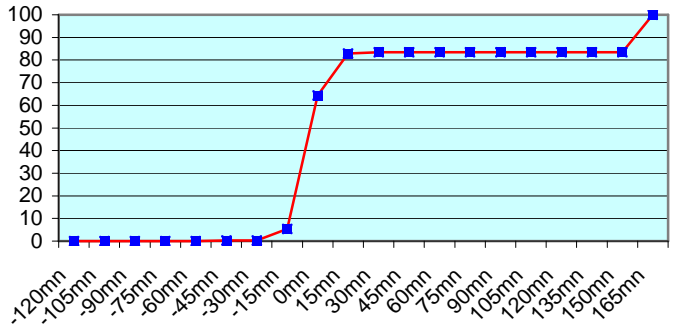
**ASES01 (164 report parts) Offenbach 164**



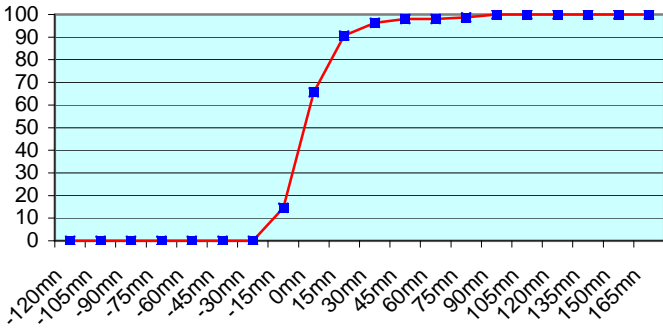
**ASDE01 (394 report parts) Offenbach 394**



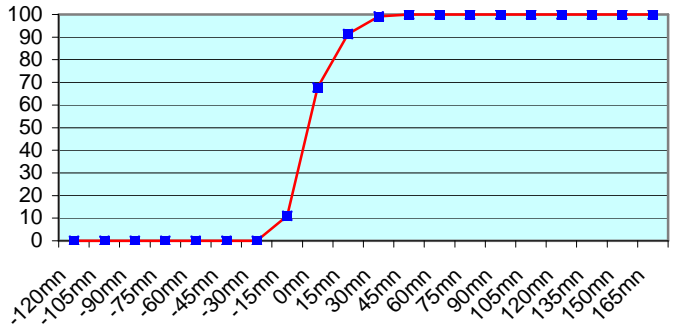
**ASDE02 (626 report parts) Offenbach 626**



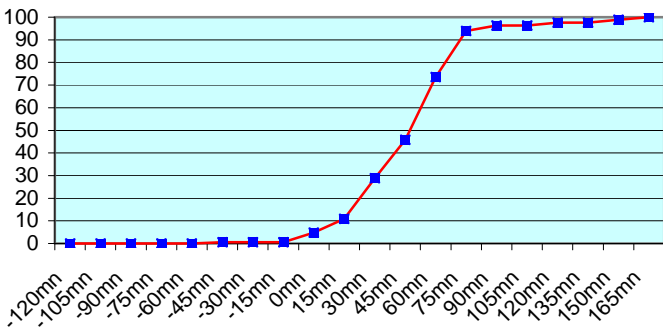
**ASDE03 (302 report parts) Offenbach 302**



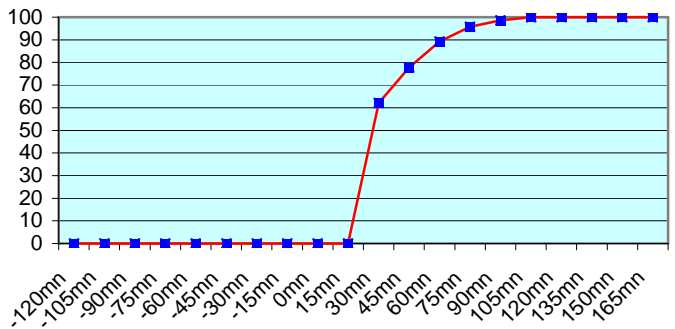
**ASDE04 (254 report parts) Offenbach 254**



**DBLK (332 report parts) Offenbach 332**

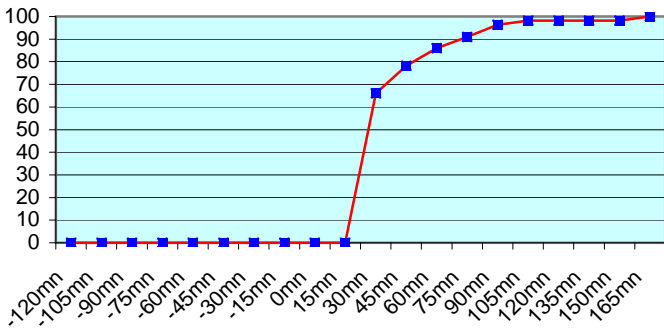


**ASFR1 (280 report parts) Email 280**

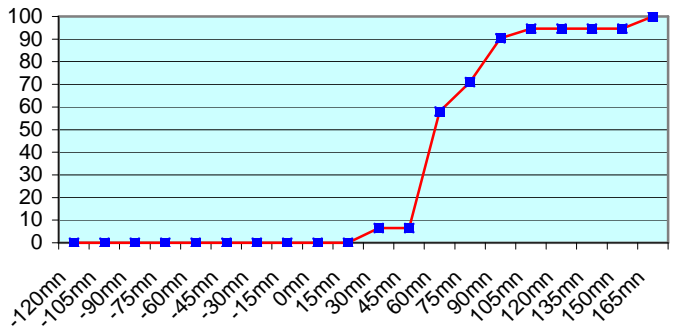




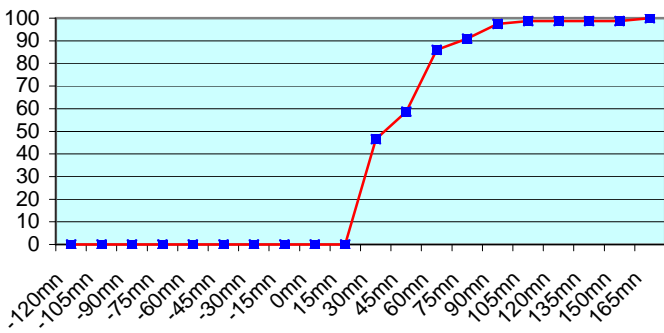
**ASFR2 (221 report parts) Email 221**



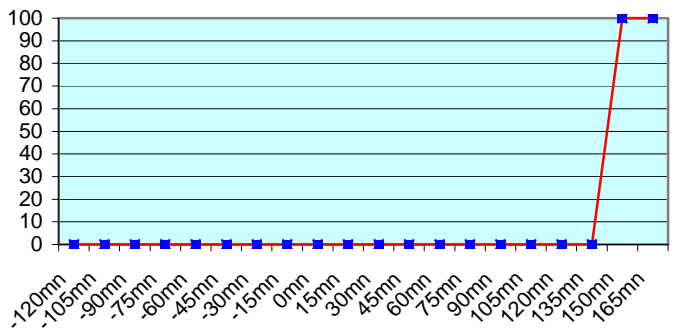
**ASFR3 (186 report parts) Email 186**



**ASFR4 (307 report parts) Email 307**



**JGQH (73 report parts) Exeter 73**



Due to late launch time, ASEU03 transmitted some messages with delay.  
 Japanese ship follow a different procedure with an important shift between the sending of the message and the synoptic hour. So, no graphic was displayed about Exeter.

For any comment or remark please contact Météo-France Toulouse DSO/DOA department

Gérard Rey ([gerard.rey@meteo.fr](mailto:gerard.rey@meteo.fr))  
 Hugues Jardat ([hugues.jardat@meteo.fr](mailto:hugues.jardat@meteo.fr))