

Joint WMO/IOC Technical Commission for
Oceanography - Ship Observation Team

End-to-end report of the ASAP data dissemination performance July to September 2012

1. Introduction

Météo-France is in charge of a end-to-end report of the ASAP data dissemination performance.

The matter of this paper is to evaluate the results of the three last months (July 2012 – September 2012).

2. Information available at Météo-France

TEMP-SHIP messages are received at LFPW (Toulouse) from EGRR (Exeter), EDZW (Offenbach) and Email.

The following information is available :

Reception at LFPW	Broadcast by LFPW
Call sign	Call sign
Header	Channel
Channel	Broadcast date
Reception date	Time lapse
Size	Broadcast size
Format	Recipient
Error	
Operator	

3. List of call signs available

Country	Call sign	Country	Call sign
Denmark	ASDK01	Japan	JCCX
	ASDK02		JGQH
	ASDK3		JIVB
E-ASAP	ASEU01		JDWX
	ASEU02		JNSR
	ASEU03	South Africa	ZSAF
	ASEU04	Spain	ASES01
	ASEU05	USA	WTEC
	ASEU06		
France	ASFR1		
	ASFR2		
	ASFR3		
	ASFR4		
Germany	ASDE01		
	ASDE02		
	ASDE03		
	ASDE04	Test	SHIP
	DBLK		ASDE09
	DFCG		

4. Origin of the messages

Call sign	Offenbach	Exeter	Telex	Email	Mariner	Supervis	X25
ASEU01	196	0	0	0	0	0	0
ASEU02	102	0	0	0	0	0	0
ASEU03	184	0	0	0	0	0	0
ASEU04	182	0	0	0	0	0	0
ASEU05	220	0	0	0	0	0	0
ASEU06	274	0	0	0	0	0	0
ASDE01	315	0	0	0	0	0	0
ASDE02	84	0	0	0	0	0	0
ASDE03	272	0	0	0	0	0	0
ASDE04	281	0	0	0	0	0	0
DBLK	585	0	0	0	0	0	0
ASDK01	306	0	0	0	0	0	0
ASDK3	251	0	0	0	0	0	0
ASES01	284	0	0	0	0	0	0
ASFR1	0	0	0	275	0	0	0
ASFR2	0	0	0	215	0	0	0
ASFR3	0	0	0	273	0	0	0
ASFR4	0	0	0	253	0	0	0
JGQH	0	290	0	0	0	0	0
JNSR	0	175	0	0	0	0	0
Test							
ASDE09	4	0	0	0	0	0	0
Wrong or strange call sign							
XXXXX	278	0	0	83	0	0	0

Mariner: French navy military sounding
 Supervis: handled by operator

5. Global system performance

Month	Origin	Nb of messages received	Nb of messages in error	Percentage of messages in error	Nb of messages with operator action	Percentage of messages with operator action
2012-Jul	Offenbach	1311	0	0		
	Exeter	156	0	0		
	Telex	0	not relevant	not relevant		
	Email	391	not relevant	not relevant		
	Mariner	0	not relevant	not relevant		
	X25	0	not relevant	not relevant		
	Supervis	0	0	not relevant		
	Total	1467	0	0	0	0
2012-Aug	Offenbach	1414	0	0		
	Exeter	285	0	0		
	Telex	0	not relevant	not relevant		
	Email	376	not relevant	not relevant		
	Mariner	0	not relevant	not relevant		
	X25	0	not relevant	not relevant		
	Supervis	0	0	not relevant		
	Total	1699	0	0	0	0
2012-Sep	Offenbach	1093	0	0		
	Exeter	24	0	0		
	Telex	0	not relevant	not relevant		
	Email	332	not relevant	not relevant		
	Mariner	0	not relevant	not relevant		
	X25	0	not relevant	not relevant		
	Supervis	0	0	not relevant		
	Total	1117	0	0	0	0
Total	Offenbach	3818	0	0		
	Exeter	465	0	0		
	Telex	0	0	not relevant		
	Email	1099	15	1,36		
	Mariner	0	not relevant	not relevant		
	X25	0	not relevant	not relevant		
	Supervis	0	0	not relevant		
	Total	5382	0	0	0	0

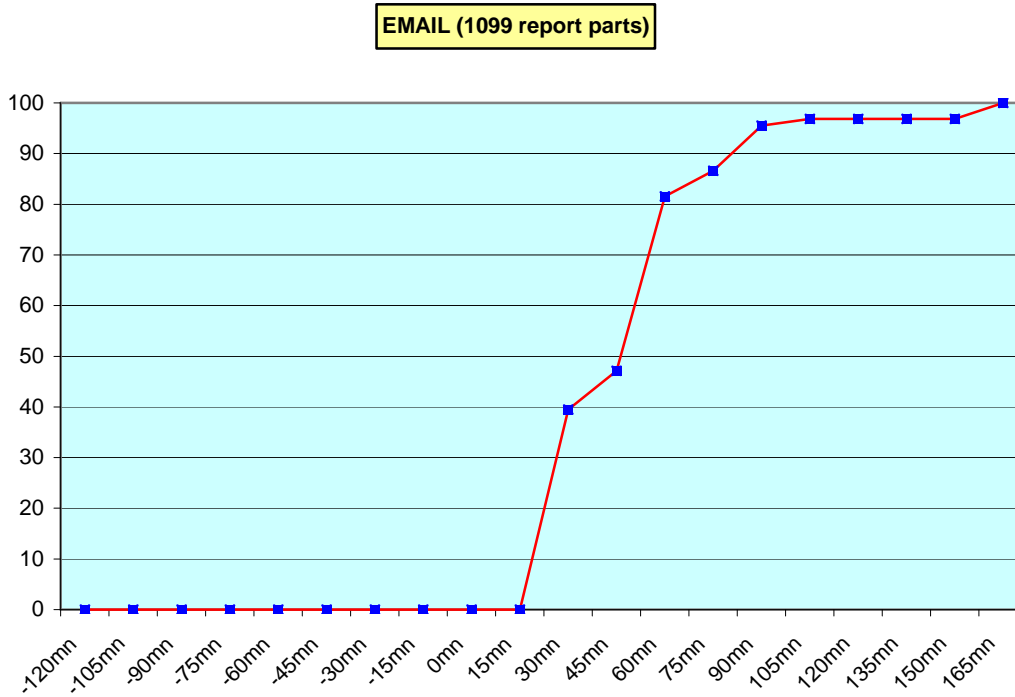
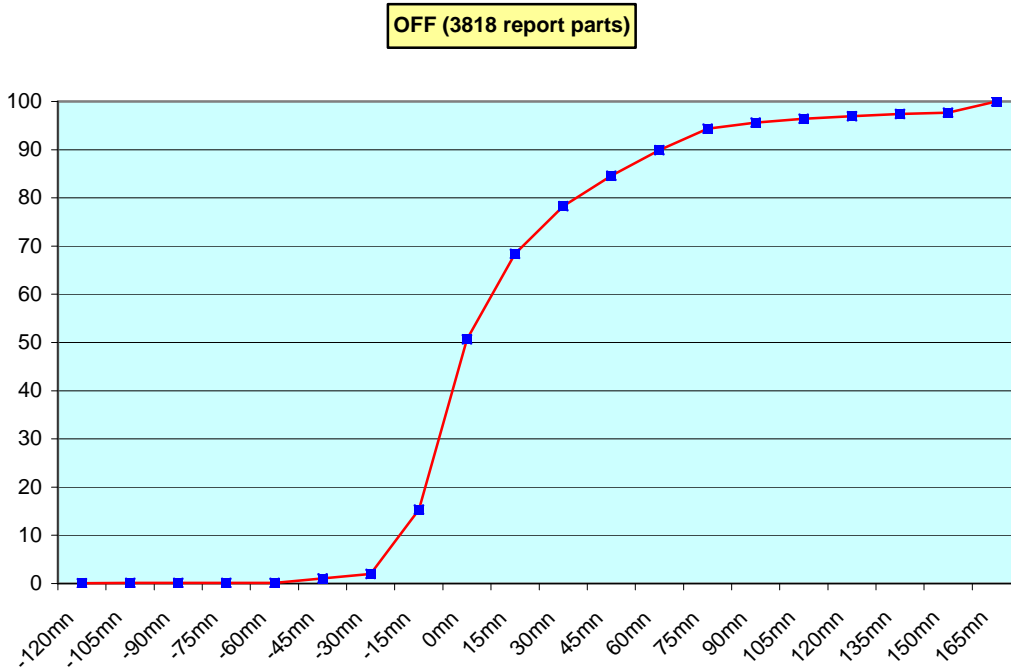
Remark: Email messages were excluded from the number of messages in error and from the relative percentage as values are regarded as not relevant. Not relevant percentages are due to not relevant values or to a total amount of data equal to zero.

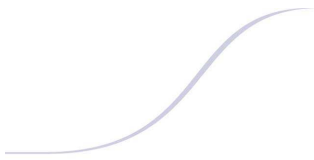
6. Global result of the syntactic check for the messages for each call sign.

Call sign	Nb of messages received	Nb of messages in error	Percentage of messages in error	Nb of messages with operator action	Percentage of messages with operator action
ASEU01	196	0	0	0	0
ASEU02	102	0	0	0	0
ASEU03	184	0	0	0	0
ASEU04	182	0	0	0	0
ASEU05	220	0	0	0	0
ASEU06	274	0	0	0	0
ASDE01	315	0	0	0	0
ASDE02	84	0	0	0	0
ASDE03	272	0	0	0	0
ASDE04	281	0	0	0	0
DBLK	585	0	0	0	0
ASDK01	306	0	0	0	0
ASDK3	251	0	0	0	0
ASES01	284	0	0	0	0
ASFR1	275	0	0	0	0
ASFR2	215	0	0	0	0
ASFR3	273	0	0	0	0
ASFR4	253	0	0	0	0
JGQH	290	0	0	0	0
JNSR	175	0	0	0	0
Test					
ASDE09	4	0	0	0	0
Wrong or strange call sign					
XXXXX	361	0	0	0	0

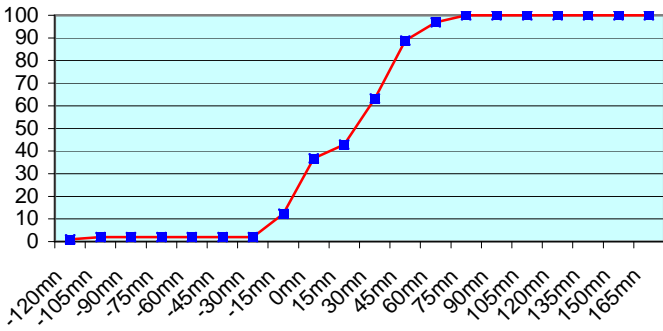
Remark: Data transmitted through email displayed an error rate close to 100% due to email syntax and were thus regarded as not relevant and excluded from errors total amount.

7. Mean time before the integration of the messages in the GTS in Toulouse. HH is the synoptic hour of reference.

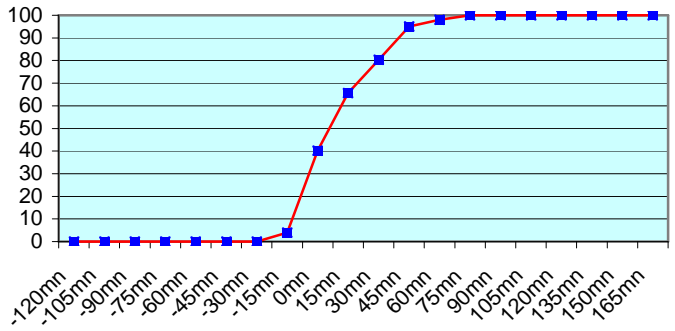




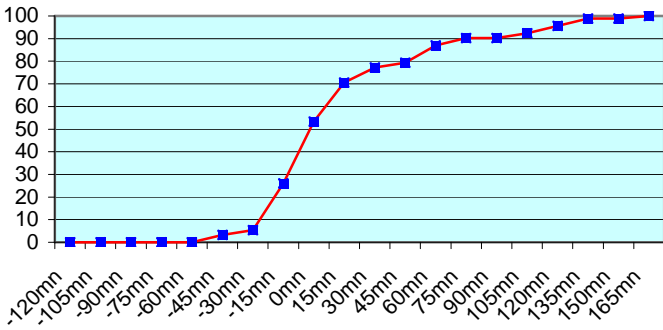
ASEU01 (196 report parts) Offenbach 196



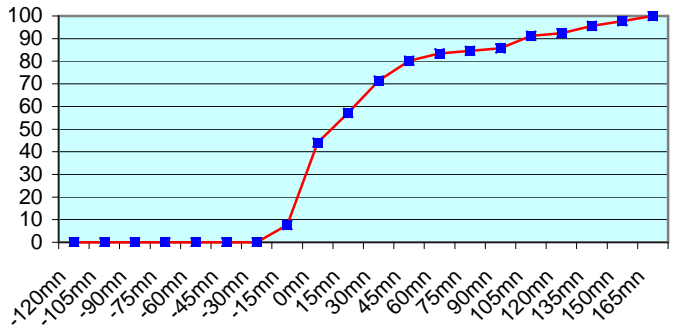
ASEU02 (102 report parts) Offenbach 102



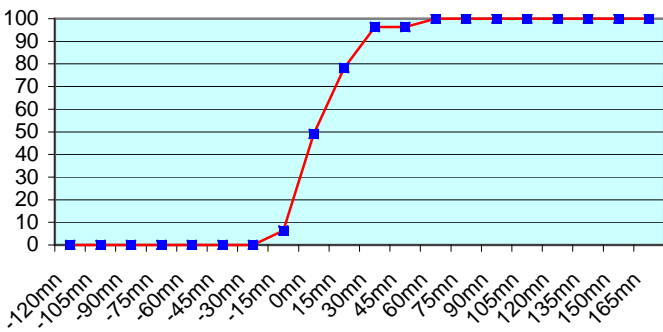
ASEU03 (184 report parts) Offenbach 184



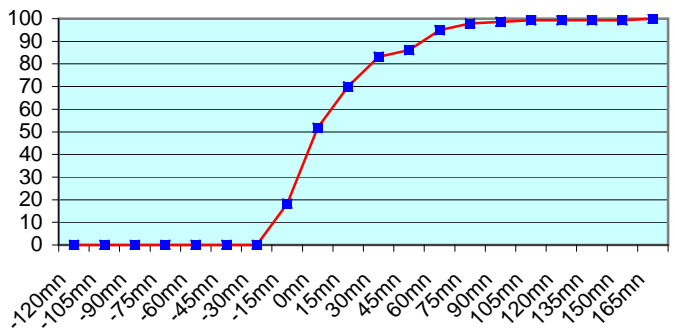
ASEU04 (182 report parts) Offenbach 182



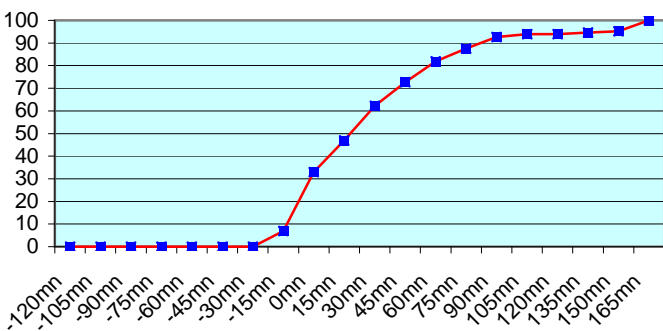
ASEU05 (220 report parts) Offenbach 220



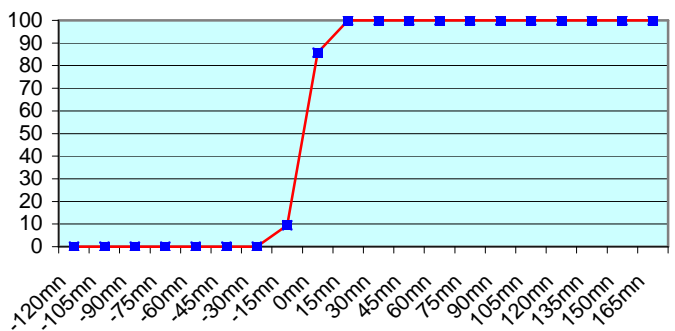
ASEU06 (274 report parts) Offenbach 274

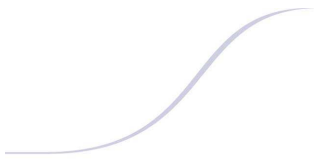


ASDE01 (315 report parts) Offenbach 315

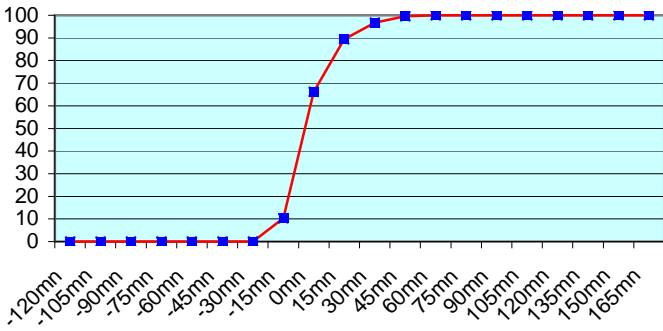


ASDE02 (84 report parts) Offenbach 84

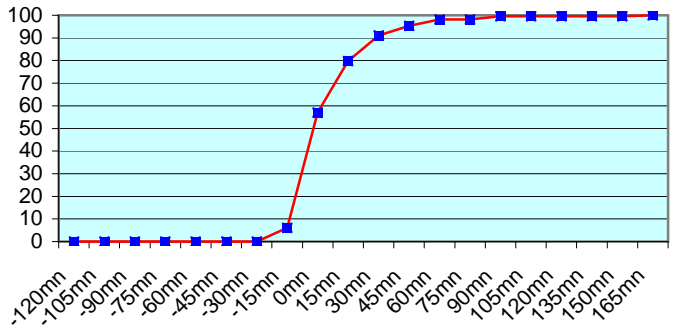




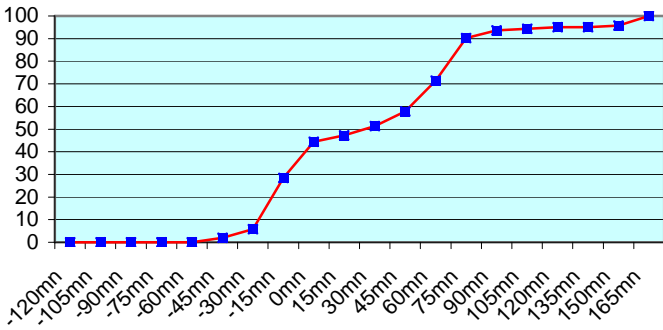
ASDE03 (272 report parts) Offenbach 272



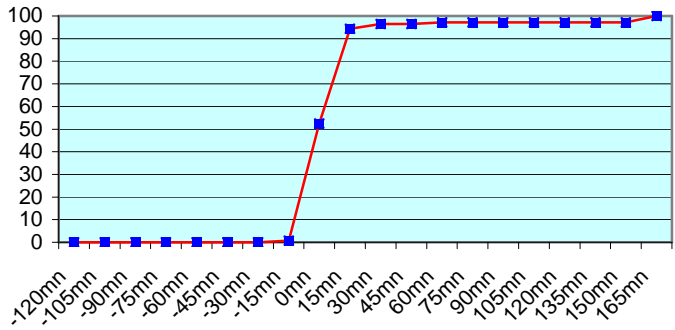
ASDE04 (281 report parts) Offenbach 281



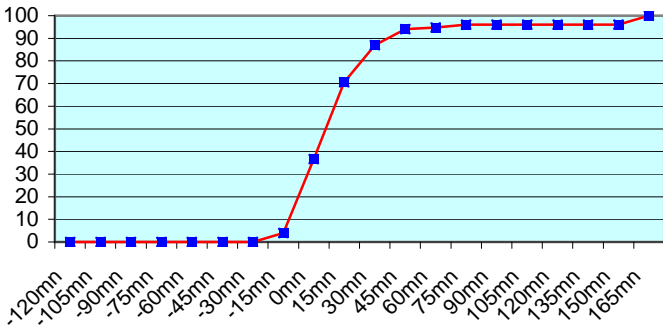
DBLK (585 report parts) Offenbach 585



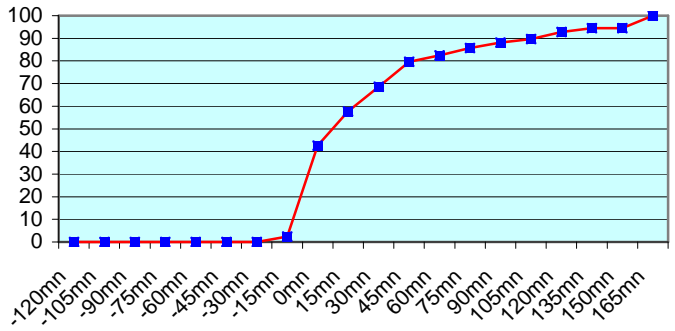
ASES01 (284 report parts) Offenbach 284



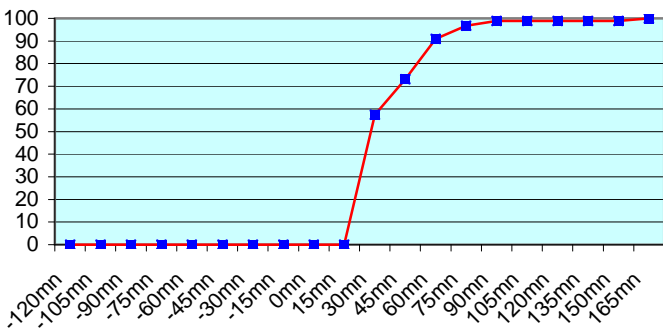
ASDK01 (306 report parts) Offenbach 306



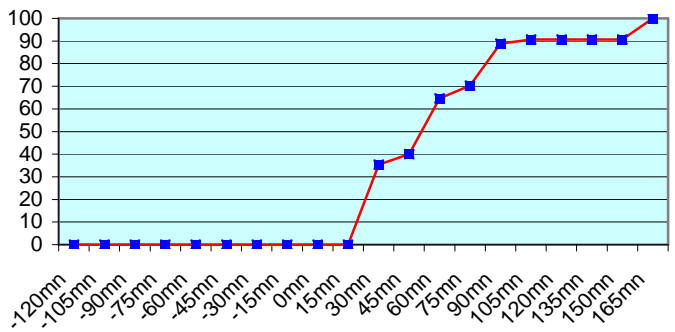
ASDK3 (251 report parts) Offenbach 251



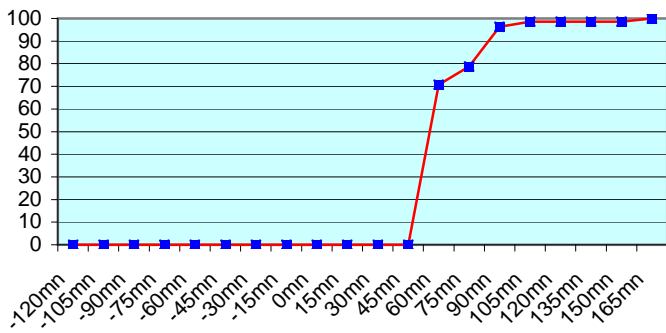
ASFR1 (275 report parts) Email 275



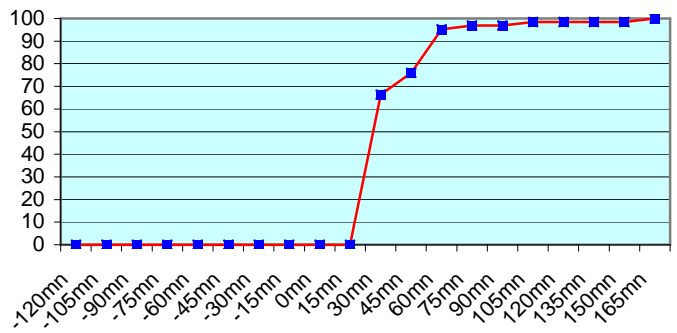
ASFR2 (215 report parts) Email 215



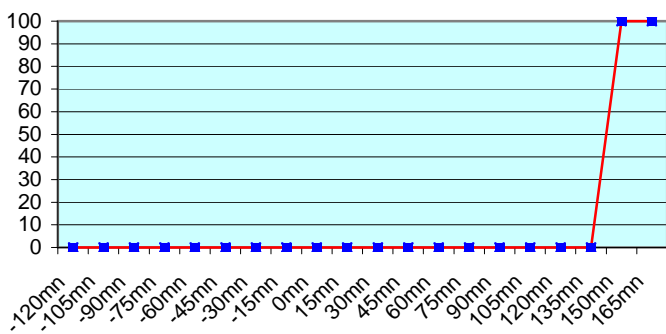
ASFR3 (273 report parts) Email 273



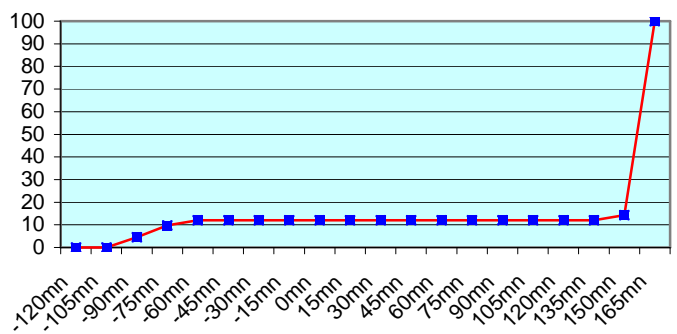
ASFR4 (253 report parts) Email 253



JGQH (290 report parts) Exeter 290



JNSR (175 report parts) Exeter 175



Due to the 6 fixed hours of transmission via email (00h30, 01h00, 01h30, 12h30, 13h00 and 13h30), the curves of graphics of french ships are not linear.

DBLK (German Research Vessel) transmitted some messages with delay but we have no information about the sounding operations on board (launch time...)

Japanese ship follow a different procedure with an important shift between the sending of the message and the synoptic hour. So, no graphic was displayed about Exeter.

For any comment or remark please contact Météo-France Toulouse DSO/DOA department

Gérard Rey (gerard.rey@meteo.fr)

Hugues Jardat (hugues.jardat@meteo.fr)