

Joint WMO/IOC Technical Commission for  
Oceanography - Ship Observation Team

# **End-to-end report of the ASAP data dissemination performance April to June 2012**

## 1. Introduction

Météo-France is in charge of a end-to-end report of the ASAP data dissemination performance.

The matter of this paper is to evaluate the results of the three last months (April 2012 – June 2012).

## 2. Information available at Météo-France

TEMP-SHIP messages are received at LFPW (Toulouse) from EGRR (Exeter), EDZW (Offenbach) and Email.

The following information is available :

<b>Reception at LFPW</b>	<b>Broadcast by LFPW</b>
Call sign	Call sign
Header	Channel
Channel	Broadcast date
Reception date	Time lapse
Size	Broadcast size
Format	Recipient
Error	
Operator	

### 3. List of call signs available

<b>Country</b>	<b>Call sign</b>	<b>Country</b>	<b>Call sign</b>
Denmark	ASDK01	Japan	JCCX
	ASDK02		JGQH
	ASDK3		JIVB
E-ASAP	ASEU01		JDWX
	ASEU02		JNSR
	ASEU03	South Africa	ZSAF
	ASEU04	Spain	ASES01
	ASEU05	USA	WTEC
	ASEU06		
France	ASFR1		
	ASFR2		
	ASFR3		
	ASFR4		
Germany	ASDE01		
	ASDE02		
	ASDE03		
	ASDE04	Test	SHIP
	DBLK		ASDE09
	DFCG		

#### 4. Origin of the messages

Call sign	Offenbach	Exeter	Telex	Email	Mariner	Supervis	X25
ASEU01	240	0	0	0	0	0	0
ASEU02	216	0	0	0	0	0	0
ASEU03	78	0	0	0	0	0	0
ASEU05	185	0	0	0	0	0	0
ASEU06	203	0	0	0	0	0	0
ASDE01	294	0	0	0	0	0	0
ASDE02	418	0	0	0	0	0	0
ASDE03	274	0	0	0	0	0	0
ASDE04	268	0	0	0	0	0	0
DBLK	252	0	0	0	0	0	0
ASDK01	310	0	0	0	0	0	0
ASDK02	228	0	0	0	0	0	0
ASDK3	384	0	0	0	0	0	0
ASES01	260	0	0	0	0	0	0
ASFR1	0	0	0	261	0	0	0
ASFR2	0	0	0	213	0	0	0
ASFR3	0	0	0	280	0	0	0
ASFR4	0	0	0	198	0	0	0
JGQH	0	235	0	0	0	0	0
JNSR	0	32	0	0	0	0	0
Test							
ASDE09	17	0	0	0	0	0	0
Wrong or strange call sign							
ASDEU05	50	0	0	0	0	0	0
PACDG	0	0	0	0	8	0	0
XXXXX	211	20	0	84	8	0	0

Mariner: French navy military sounding  
 Supervis: handled by operator

## 5. Global system performance

Month	Origin	Nb of messages received	Nb of messages in error	Percentage of messages in error	Nb of messages with operator action	Percentage of messages with operator action
2012-Apr	Offenbach	1292	0	0		
	Exeter	94	0	0		
	Telex	0	not relevant	not relevant		
	Email	312	not relevant	not relevant		
	Mariner	16	not relevant	not relevant		
	X25	0	not relevant	not relevant		
	Supervis	0	0	not relevant		
	Total	1386	0	0	0	0
2012-May	Offenbach	1225	0	0		
	Exeter	71	0	0		
	Telex	0	not relevant	not relevant		
	Email	312	not relevant	not relevant		
	Mariner	0	not relevant	not relevant		
	X25	0	not relevant	not relevant		
	Supervis	0	0	not relevant		
	Total	1296	0	0	0	0
2012-Jun	Offenbach	1371	0	0		
	Exeter	122	0	0		
	Telex	0	not relevant	not relevant		
	Email	412	not relevant	not relevant		
	Mariner	0	not relevant	not relevant		
	X25	0	not relevant	not relevant		
	Supervis	0	0	not relevant		
	Total	1493	0	0	0	0
Total	Offenbach	3888	0	0		
	Exeter	287	0	0		
	Telex	0	0	not relevant		
	Email	1036	0	0		
	Mariner	16	not relevant	not relevant		
	X25	0	not relevant	not relevant		
	Supervis	0	0	not relevant		
	Total	5227	0	0	0	0

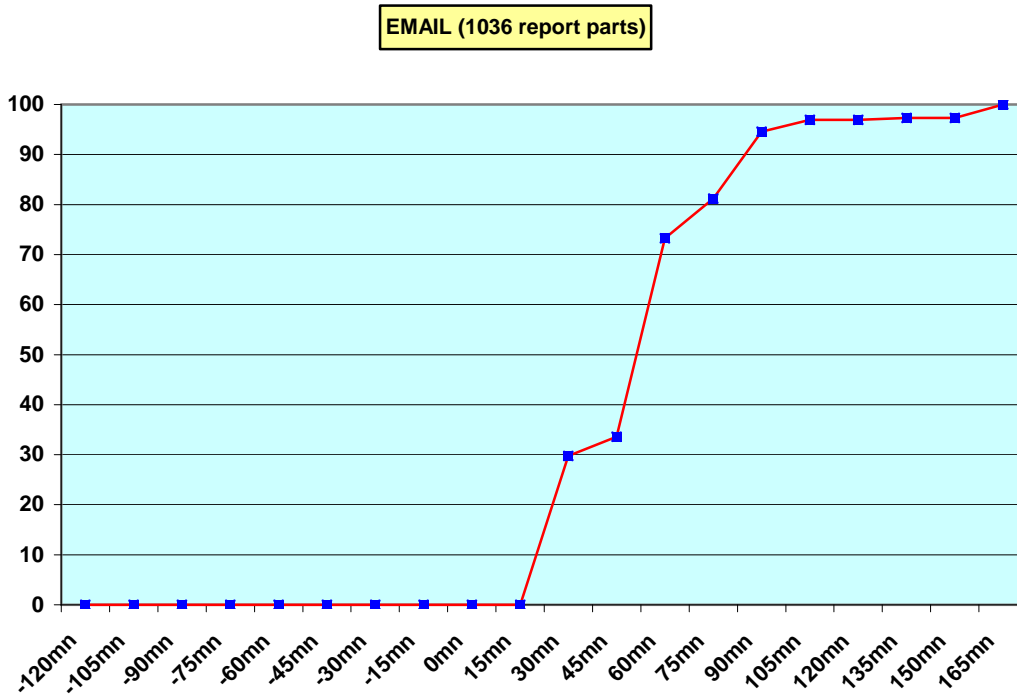
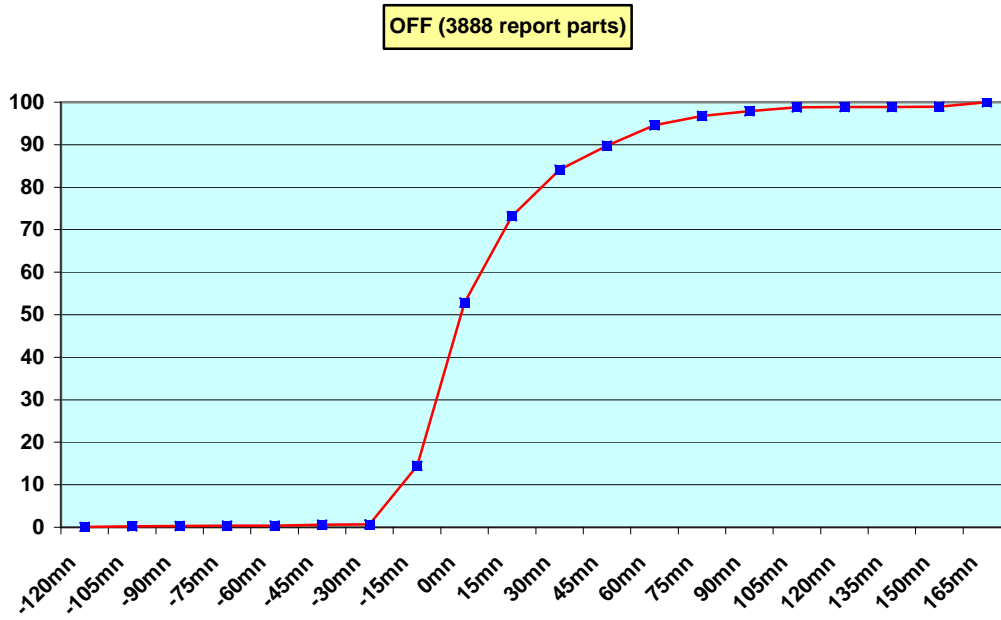
**Remark:** Email messages were excluded from the number of messages in error and from the relative percentage as values are regarded as not relevant. Not relevant percentages are due to not relevant values or to a total amount of data equal to zero.

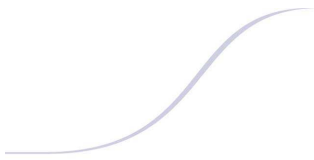
## 6. Global result of the syntactic check for the messages for each call sign.

Call sign	Nb of messages received	Nb of messages in error	Percentage of messages in error	Nb of messages with operator action	Percentage of messages with operator action
ASEU01	240	0	0	0	0
ASEU02	216	0	0	0	0
ASEU03	78	0	0	0	0
ASEU05	185	0	0	0	0
ASEU06	203	0	0	0	0
ASDE01	294	0	0	0	0
ASDE02	418	0	0	0	0
ASDE03	274	0	0	0	0
ASDE04	268	0	0	0	0
DBLK	252	0	0	0	0
ASDK01	310	0	0	0	0
ASDK02	228	0	0	0	0
ASDK3	384	0	0	0	0
ASES01	260	0	0	0	0
ASFR1	261	0	0	0	0
ASFR2	213	0	0	0	0
ASFR3	280	0	0	0	0
ASFR4	198	0	0	0	0
JGQH	235	0	0	0	0
JNSR	32	0	0	0	0
Test					
ASDE09	17	0	0	0	0
Wrong or strange call sign					
ASDEU05	50	0	0	0	0
PACDG	8	0	0	0	0
XXXXX	323	0	0	0	0

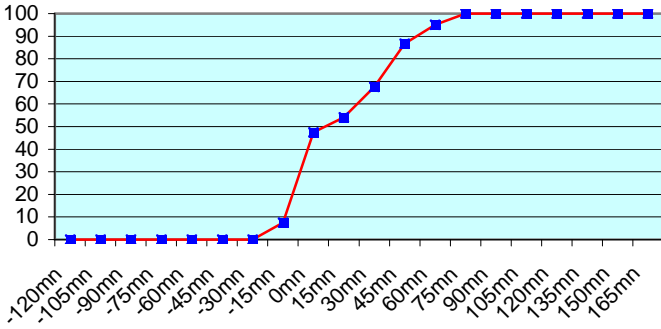
**Remark:** Data transmitted through email displayed an error rate close to 100% due to email syntax and were thus regarded as not relevant and excluded from errors total amount.

7. Mean time before the integration of the messages in the GTS in Toulouse. HH is the synoptic hour of reference.

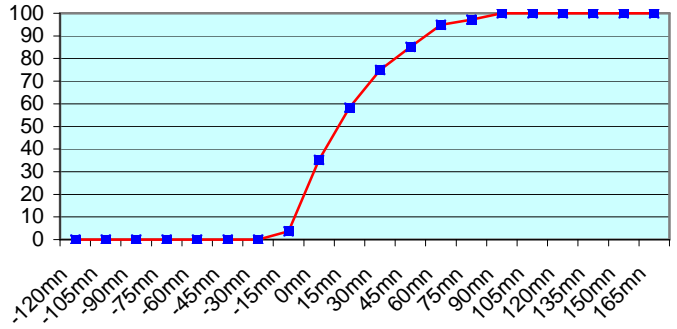




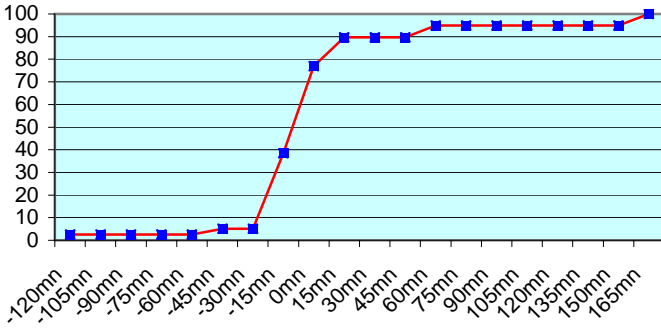
**ASEU01 (240 report parts) Offenbach 240**



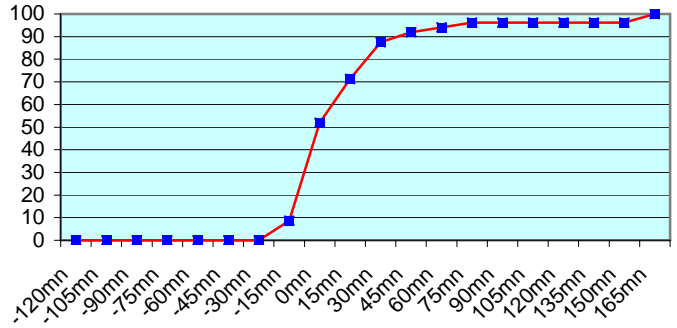
**ASEU02 (216 report parts) Offenbach 216**



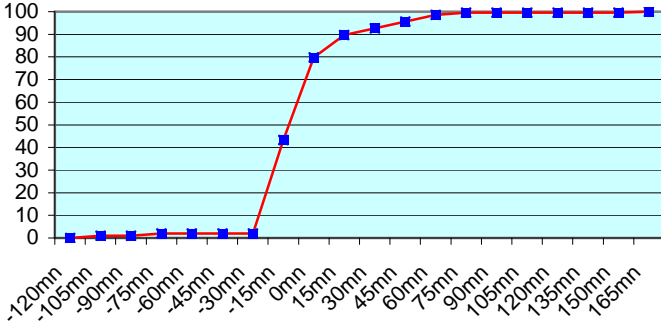
**ASEU03 (78 report parts) Offenbach 78**



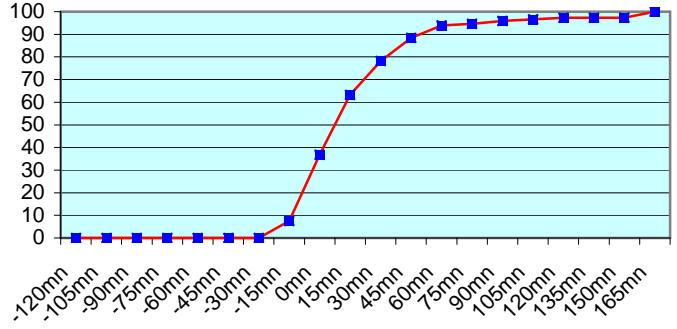
**ASEU05 (185 report parts) Offenbach 185**



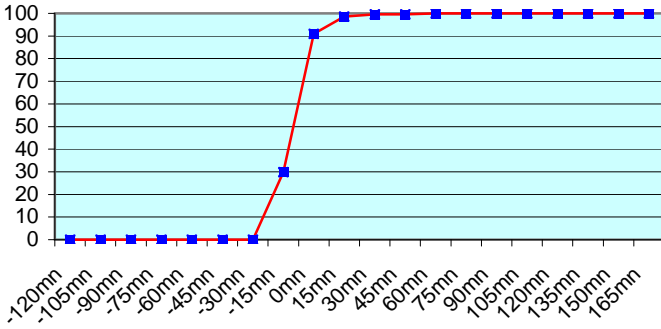
**ASEU06 (203 report parts) Offenbach 203**



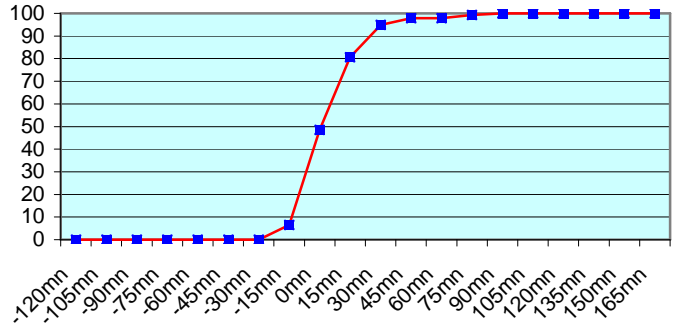
**ASDE01 (294 report parts) Offenbach 294**



**ASDE02 (418 report parts) Offenbach 418**



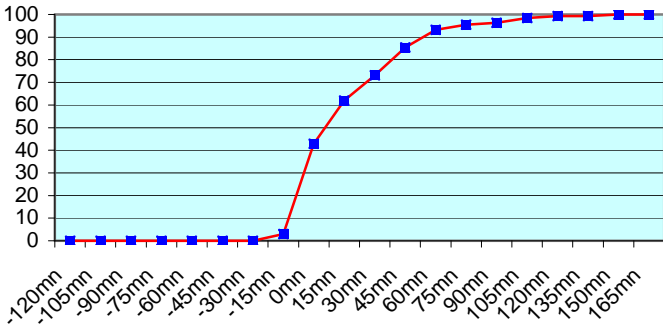
**ASDE03 (274 report parts) Offenbach 274**



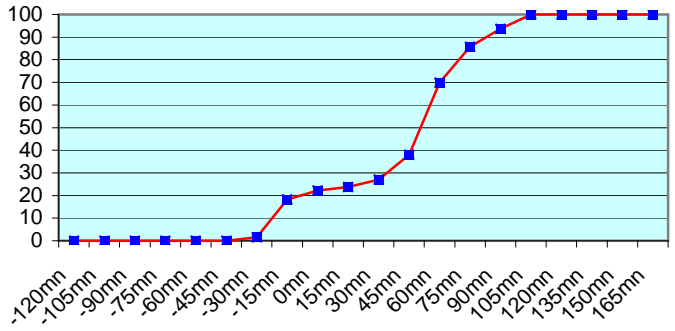




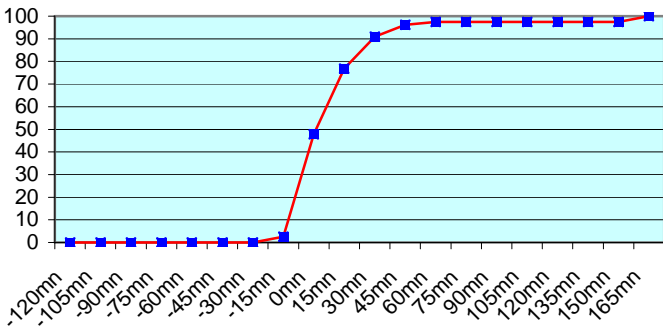
**ASDE04 (268 report parts) Offenbach 268**



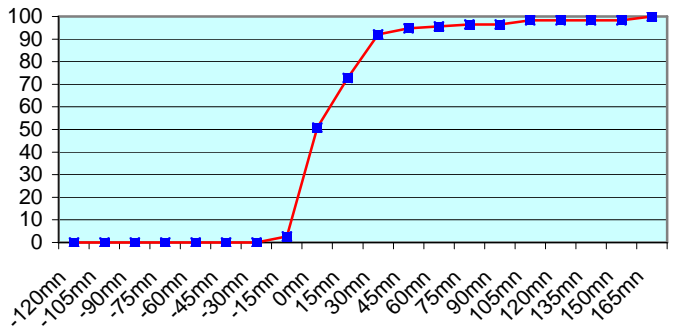
**DBLK (252 report parts) Offenbach 252**



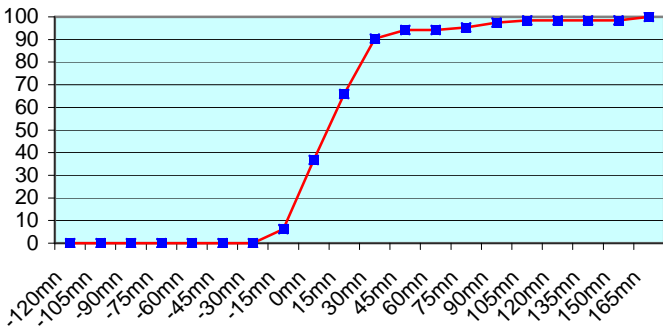
**ASDK01 (310 report parts) Offenbach 310**



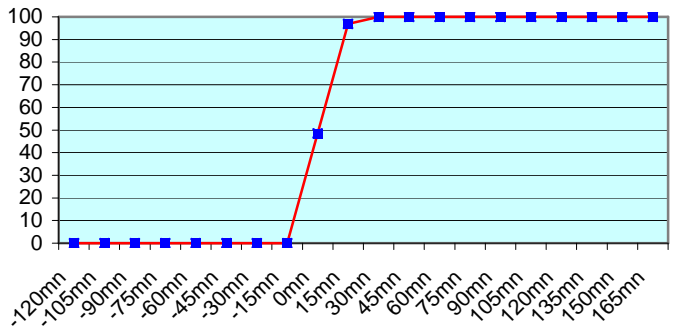
**ASDK02 (228 report parts) Offenbach 228**



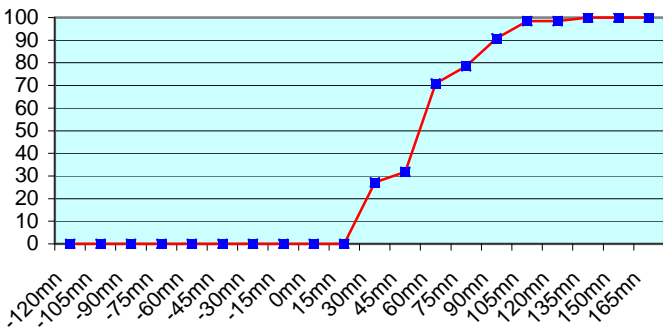
**ASDK3 (384 report parts) Offenbach 384**



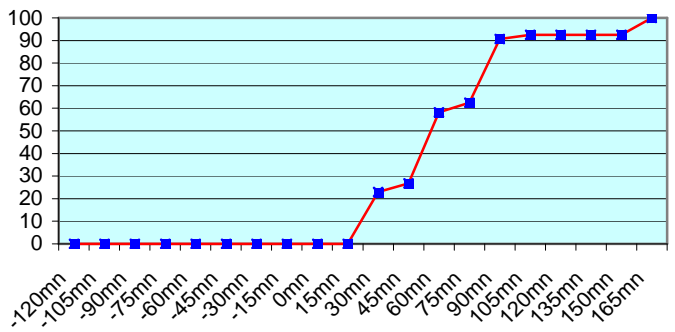
**ASES01 (260 report parts) Offenbach 260**



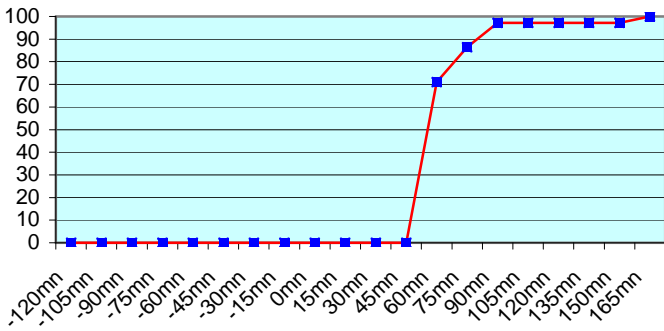
**ASFR1 (261 report parts) Email 261**



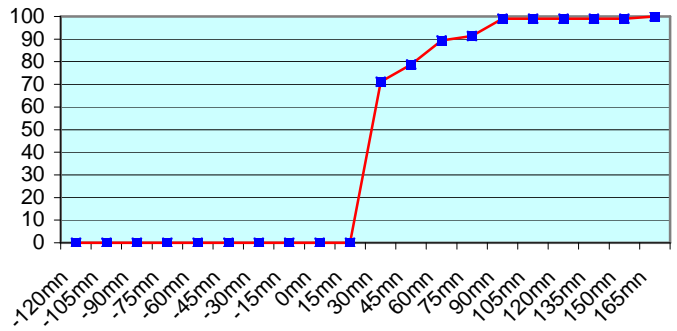
**ASFR2 (213 report parts) Email 213**



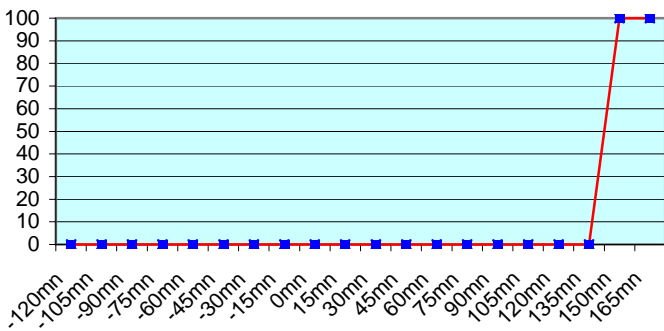
ASFR3 (280 report parts) Email 280



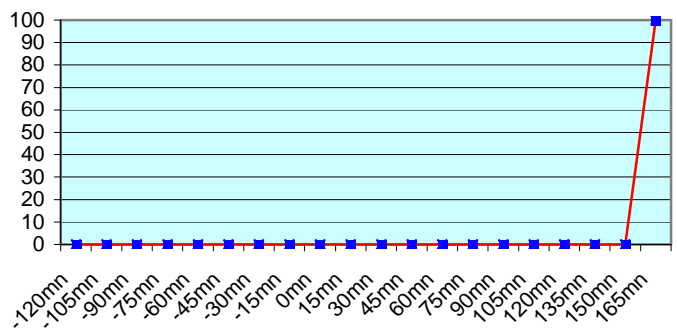
ASFR4 (198 report parts) Email 198



JGQH (235 report parts) Exeter 235



JNSR (32 report parts) Exeter 32



Due to the 6 fixed hours of transmission via email (00h30, 01h00, 01h30, 12h30, 13h00 and 13h30), the curves of graphics of ASFR1 and ASFR2 are not linear.

DBLK (German Research Vessel) transmitted some messages with delay but we have no information about the sounding operations on board (launch time...)

Japanese ship follow a different procedure with an important shift between the sending of the message and the synoptic hour. So, no graphic was displayed about Exeter.

For any comment or remark please contact Météo-France Toulouse DSO/DOA department

Gérard Rey ([gerard.rey@meteo.fr](mailto:gerard.rey@meteo.fr))

Hugues Jardat ([hugues.jardat@meteo.fr](mailto:hugues.jardat@meteo.fr))