

Joint WMO/IOC Technical Commission for
Oceanography - Ship Observation Team

End-to-end report of the ASAP data dissemination performance January to March 2012

1. Introduction

Météo-France is in charge of a end-to-end report of the ASAP data dissemination performance.

The matter of this paper is to evaluate the results of the last year (January 2012 – March 2012).

2. Information available at Météo-France

TEMP-SHIP messages are received at LFPW (Toulouse) from EGRR (Exeter), EDZW (Offenbach) and Email.

The following information is available :

Reception at LFPW	Broadcast by LFPW
Call sign	Call sign
Header	Channel
Channel	Broadcast date
Reception date	Time lapse
Size	Broadcast size
Format	Recipient
Error	
Operator	

3. List of call signs available

Country	Call sign	Country	Call sign
Denmark	ASDK01	Japan	JCCX
	ASDK02		JGQH
	ASDK3		JIVB
E-ASAP	ASEU01		JDWX
	ASEU02		JNSR
	ASEU03	South Africa	ZSAF
	ASEU04	Spain	ASES01
	ASEU05	USA	WTEC
	ASEU06		
France	ASFR1		
	ASFR2		
	ASFR3		
	ASFR4		
Germany	ASDE01		
	ASDE02		
	ASDE03		
	ASDE04	Test	SHIP
	DBLK		ASDE09
	DFCG		

4. Origin of the messages

Call sign	Offenbach	Exeter	Telex	Email	Mariner	Supervis	X25
ASEU01	159	0	0	0	0	0	0
ASEU02	156	0	0	0	0	0	0
ASEU03	114	0	0	0	0	0	0
ASEU04	18	0	0	0	0	0	0
ASEU05	186	0	0	0	0	0	0
ASEU06	224	0	0	0	0	0	0
ASDE01	432	0	0	0	0	0	0
ASDE02	314	0	0	0	0	0	0
ASDE03	222	0	0	0	0	0	0
ASDE04	238	0	0	0	0	0	0
DBLK	302	0	0	0	0	0	0
ASDK01	186	0	0	0	0	0	0
ASDK02	144	0	0	0	0	0	0
ASDK3	300	0	0	0	0	0	0
ASES01	265	0	0	0	0	0	0
ASFR1	0	0	0	212	0	0	0
ASFR2	0	1	0	159	0	0	0
ASFR3	0	0	0	263	0	0	0
ASFR4	0	0	0	152	0	0	0
JGQH	0	233	0	0	0	0	0
Test							
ASDE09	28	0	0	0	0	0	0
Wrong or strange call sign							
XXXXX	344	99	0	151	0	0	0
numer.	2	0	0	0	0	0	0

Mariner: French navy military sounding
 Supervis: handled by operator

5. Global system performance

Month	Origin	Nb of messages received	Nb of messages in error	Percentage of messages in error	Nb of messages with operator action	Percentage of messages with operator action
2012-Jan	Offenbach	1040	3	0,29		
	Exeter	101	1	0,99		
	Telex	0	not relevant	not relevant		
	Email	272	not relevant	not relevant		
	Mariner	0	not relevant	not relevant		
	X25	0	not relevant	not relevant		
	Supervis	0	0	not relevant		
	Total	1141	4	0,35	0	0
2012-Feb	Offenbach	1172	0	0		
	Exeter	146	0	0		
	Telex	0	not relevant	not relevant		
	Email	323	not relevant	not relevant		
	Mariner	0	not relevant	not relevant		
	X25	0	not relevant	not relevant		
	Supervis	0	0	not relevant		
	Total	1318	0	0	0	0
2012-Mar	Offenbach	1422	4	0,28		
	Exeter	86	0	0		
	Telex	0	not relevant	not relevant		
	Email	342	not relevant	not relevant		
	Mariner	0	not relevant	not relevant		
	X25	0	not relevant	not relevant		
	Supervis	0	0	not relevant		
	Total	1508	4	0,27	0	0
Total	Offenbach	3634	7	0,19		
	Exeter	333	1	0,3		
	Telex	0	0	not relevant		
	Email	937	200	21,34		
	Mariner	0	not relevant	not relevant		
	X25	0	not relevant	not relevant		
	Supervis	0	0	not relevant		
	Total	4904	8	0,2	0	0

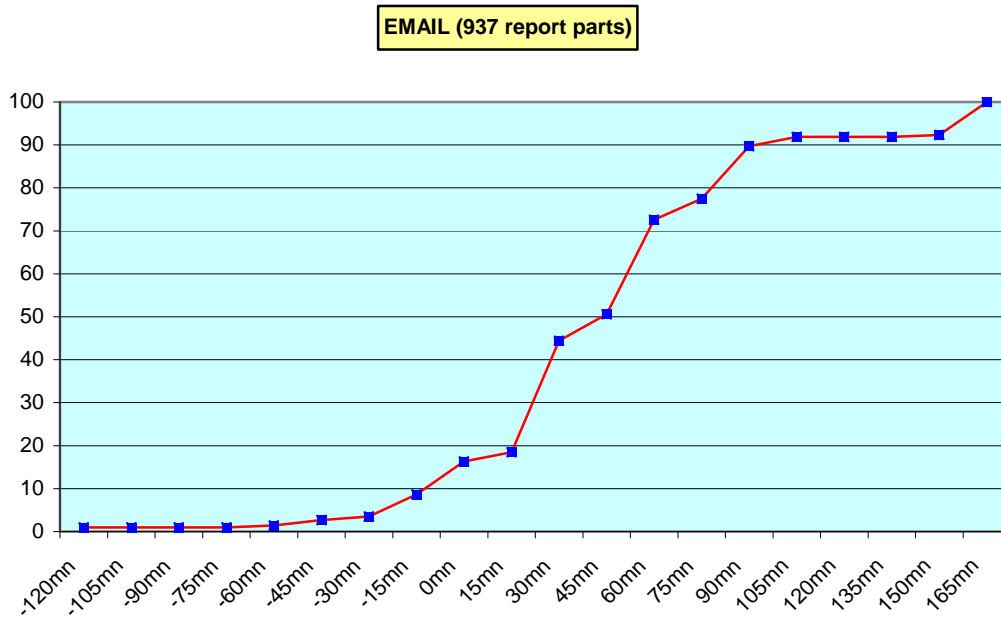
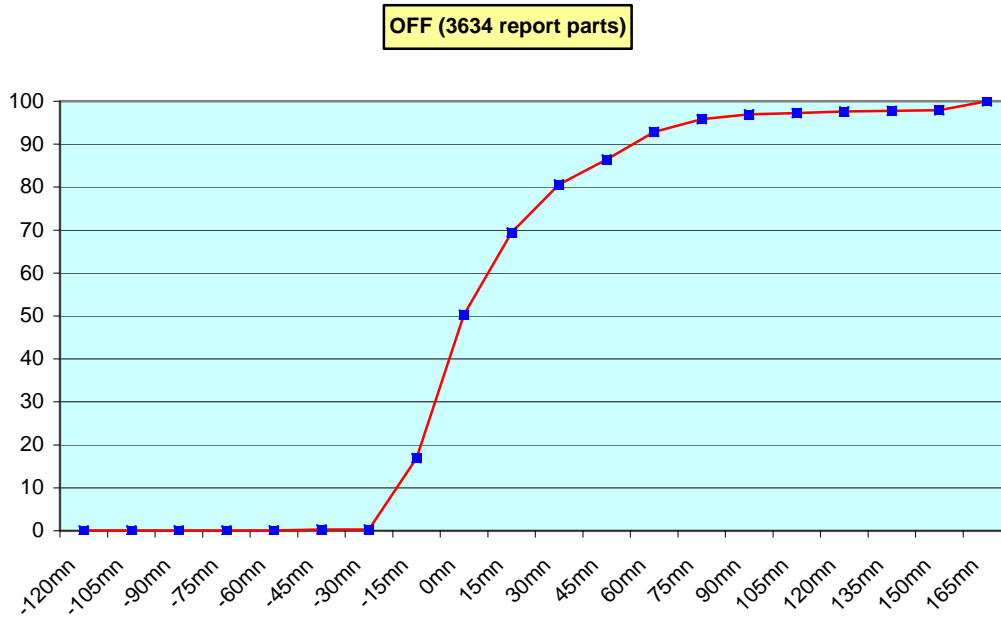
Remark: Email messages were excluded from the number of messages in error and from the relative percentage as values are regarded as not relevant. Not relevant percentages are due to not relevant values or to a total amount of data equal to zero.

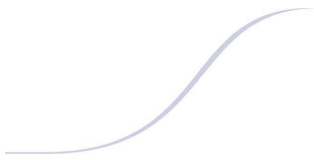
6. Global result of the syntactic check for the messages for each call sign.

Call sign	Nb of messages received	Nb of messages in error	Percentage of messages in error	Nb of messages with operator action	Percentage of messages with operator action
ASEU01	688	0	0	0	0
ASEU02	493	0	0	0	0
ASEU03	610	0	0	0	0
ASEU04	519	0	0	0	0
ASEU05	889	0	0	0	0
ASEU06	170	0	0	0	0
ASDE01	1376	0	0	0	0
ASDE02	1249	0	0	0	0
ASDE03	937	0	0	0	0
ASDE04	1246	0	0	0	0
DBLK	1524	0	0	0	0
DFCG	76	0	0	0	0
ASGB01	298	0	0	0	0
ASDK01	1355	0	0	0	0
ASDK02	1350	0	0	0	0
ASDK3	1347	0	0	0	0
ASES01	1008	8	0,79	0	0
ASFR1	920	0	0	1	0,11
ASFR2	1030	0	0	8	0,78
ASFR3	741	1	0,13	6	0,81
ASFR4	1037	0	0	4	0,39
JGQH	894	0	0	0	0
JNSR	2025	0	0	0	0
Test					
ASDE09	148	0	0	0	0
Wrong or strange call sign					
XXXXX	2528	0	0	7	0,28
numer,	19	0	0	2	10,53

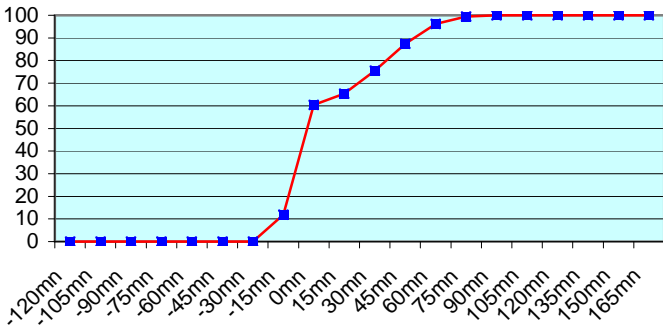
Remark: Data transmitted through email displayed an error rate close to 100% due to email syntax and were thus regarded as not relevant and excluded from errors total amount.

7. Mean time before the integration of the messages in the GTS in Toulouse. HH is the synoptic hour of reference.

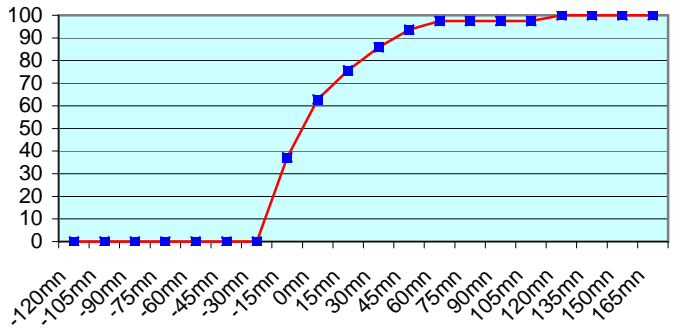




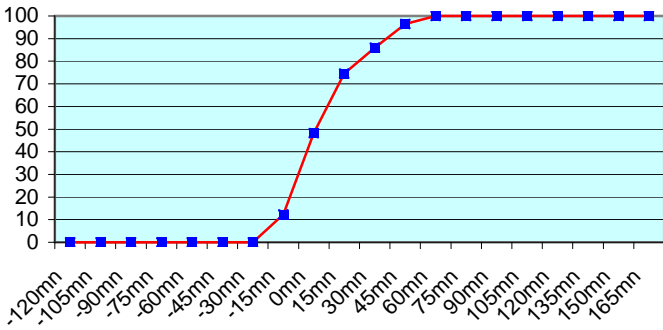
ASEU01 (159 report parts) Offenbach 159



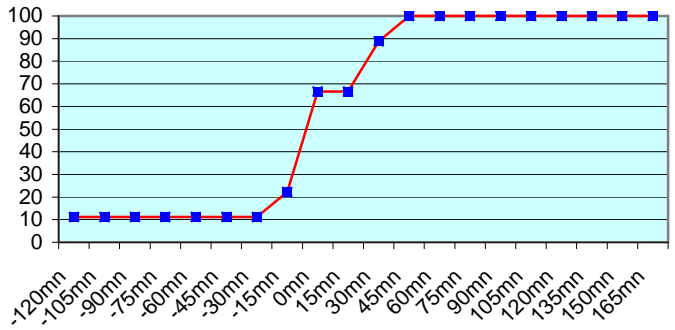
ASEU02 (156 report parts) Offenbach 156



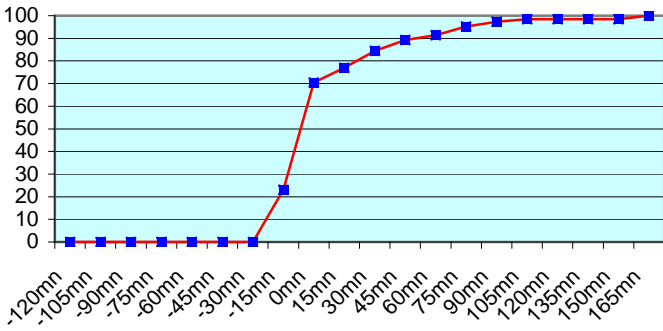
ASEU03 (114 report parts) Offenbach 114



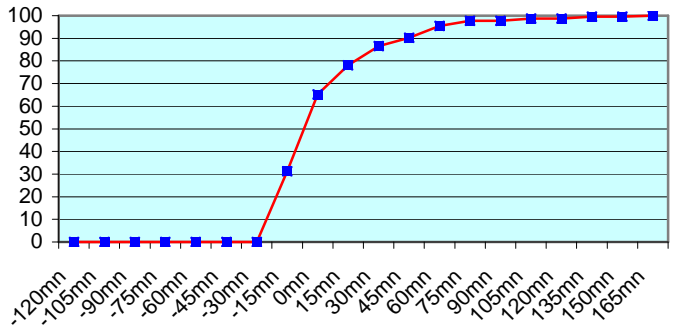
ASEU04 (18 report parts) Offenbach 18



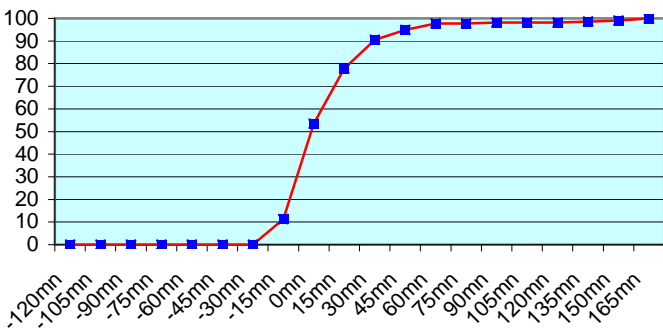
ASEU05 (186 report parts) Offenbach 186



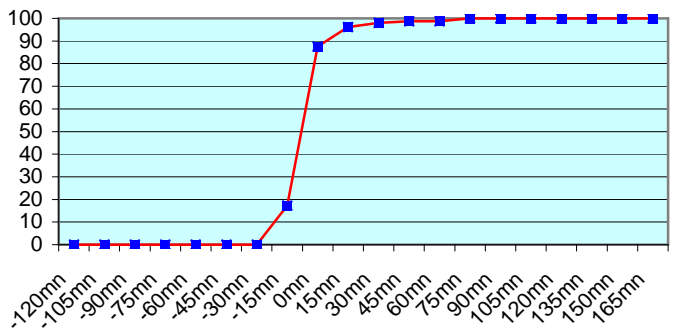
ASEU06 (224 report parts) Offenbach 224

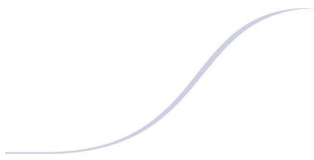


ASDE01 (432 report parts) Offenbach 432

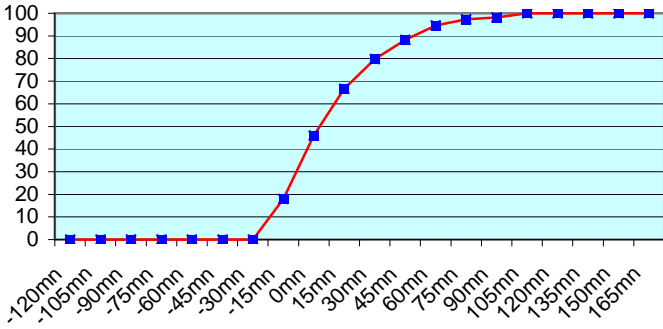


ASDE02 (314 report parts) Offenbach 314

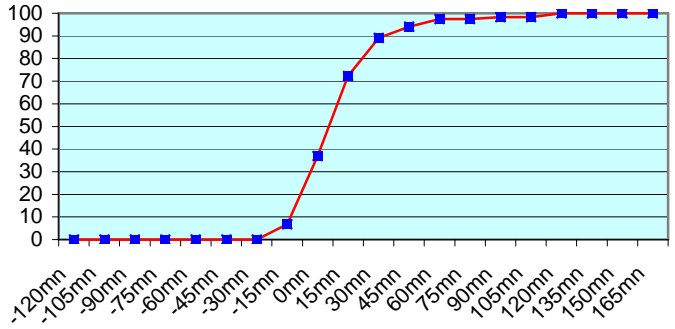




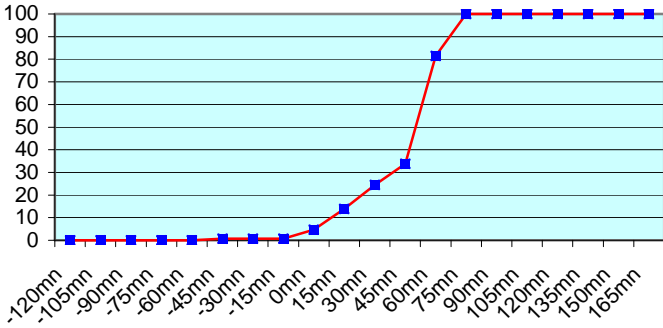
ASDE03 (222 report parts) Offenbach 222



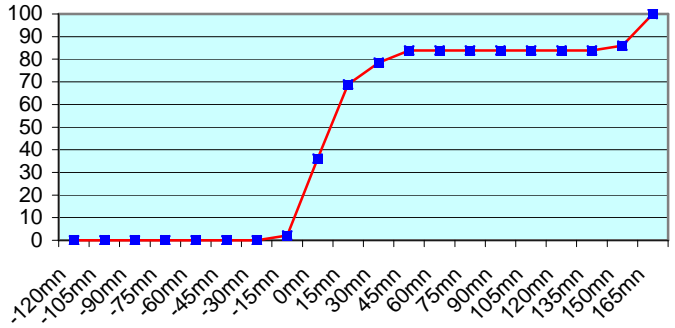
ASDE04 (238 report parts) Offenbach 238



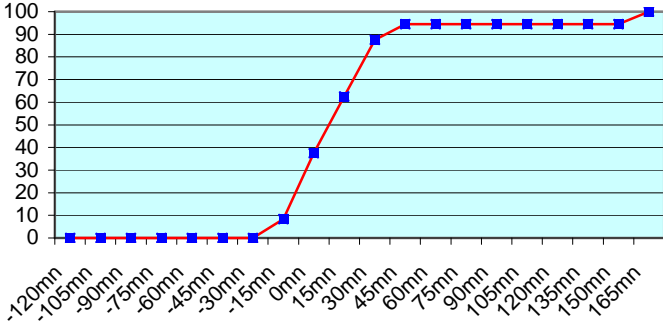
DBLK (302 report parts) Offenbach 302



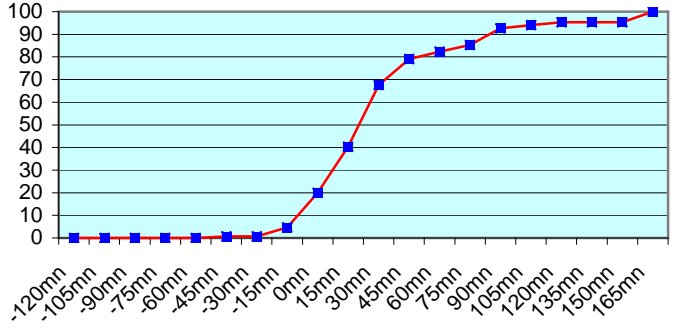
ASDK01 (186 report parts) Offenbach 186



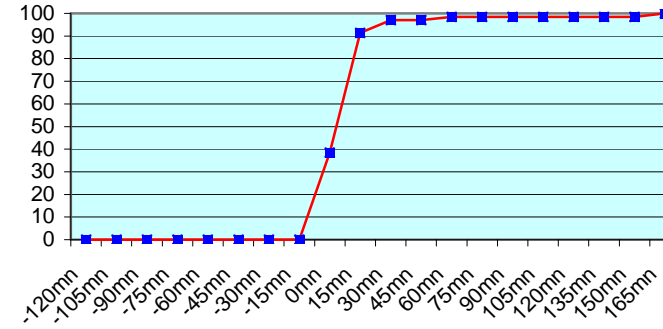
ASDK02 (144 report parts) Offenbach 144



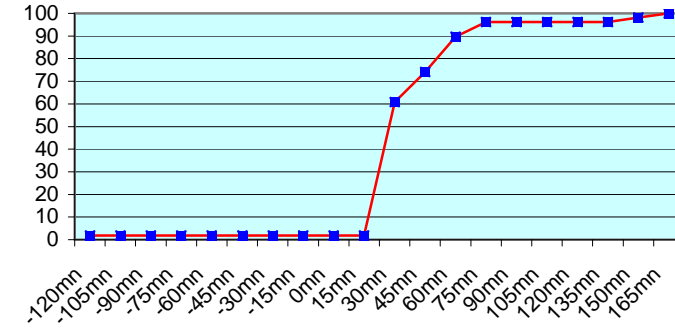
ASDK3 (300 report parts) Offenbach 300

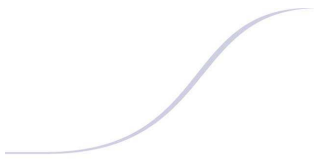


ASES01 (265 report parts) Offenbach 265

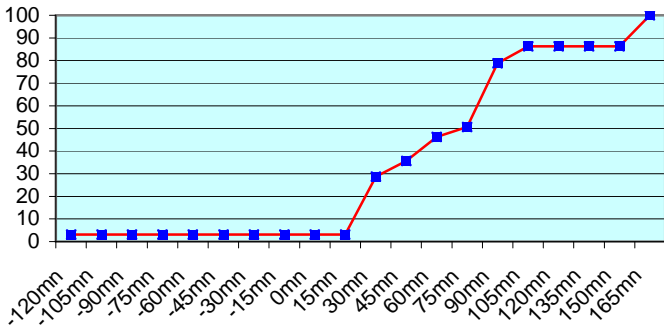


ASFR1 (212 report parts) Email 212

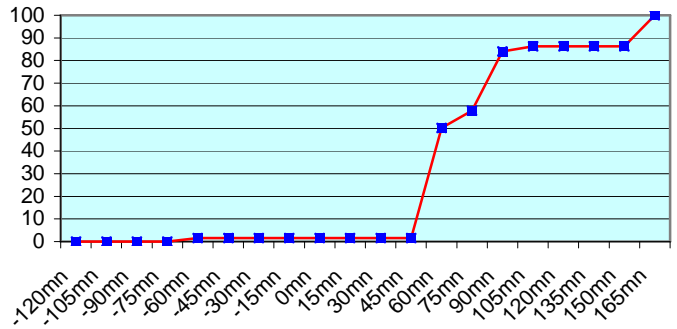




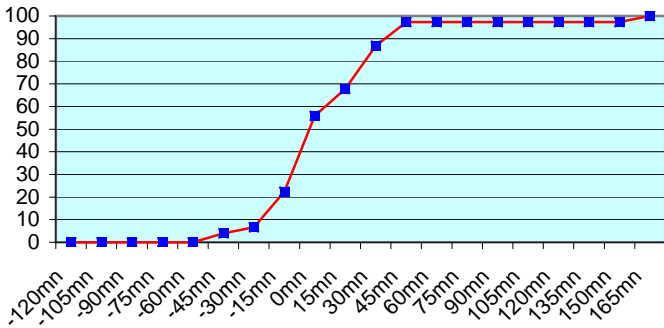
ASFR2 (160 report parts) Exeter 1 Email 159



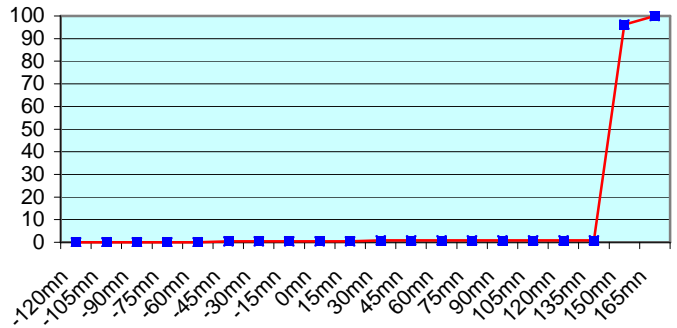
ASFR3 (263 report parts) Email 263



ASFR4 (152 report parts) Email 152



JGQH (233 report parts) Exeter 233



Due to problems with iridium system, ASFR2 and ASFR3 transmitted some messages with delay. No particular problem was noticed the other European ships.

Japanese ship follow a different procedure with an important shift between the sending of the message and the synoptic hour. So, no graphic was displayed about Exeter.

For any comment or remark please contact Météo-France Toulouse DSO/DOA department

Gérard Rey (gerard.rey@meteo.fr)

Hugues Jardat (hugues.jardat@meteo.fr)