

Joint WMO/IOC Technical Commission for
Oceanography - Ship Observation Team

**End-to-end report of the
ASAP data dissemination
performance
2012
January to December**

1. Introduction

Météo-France is in charge of a end-to-end report of the ASAP data dissemination performance.

The matter of this paper is to evaluate the results of the last year (January 2012 – December 2012).

2. Information available at Météo-France

TEMP-SHIP messages are received at LFPW (Toulouse) from EGRR (Exeter), EDZW (Offenbach) and Email.

The following information is available :

Reception at LFPW	Broadcast by LFPW
Call sign	Call sign
Header	Channel
Channel	Broadcast date
Reception date	Time lapse
Size	Broadcast size
Format	Recipient
Error	
Operator	

3. List of call signs available

Country	Call sign	Country	Call sign
Denmark	ASDK01	Japan	JCCX
	ASDK02		JGQH
	ASDK3		JIVB
E-ASAP	ASEU01		JDWX
	ASEU02		JNSR
	ASEU03	South Africa	ZSAF
	ASEU04	Spain	ASES01
	ASEU05	USA	WTEC
	ASEU06		
France	ASFR1		
	ASFR2		
	ASFR3		
	ASFR4		
Germany	ASDE01		
	ASDE02		
	ASDE03		
	ASDE04	Test	SHIP
	DBLK		ASDE09
	DFCG		

4. Origin of the messages

Call sign	Offenbach	Exeter	Telex	Email	Mariner	Supervis	X25
ASEU01	683	0	0	0	0	0	0
ASEU02	686	0	0	0	0	0	0
ASEU03	430	0	0	0	0	0	0
ASEU04	360	0	0	0	0	0	0
ASEU05	755	0	0	0	0	0	0
ASEU06	933	0	0	0	0	0	0
ASDE01	1435	0	0	0	0	0	0
ASDE02	1442	0	0	0	0	0	0
ASDE03	1070	0	0	0	0	0	0
ASDE04	1041	0	0	0	0	0	0
DBLK	1471	0	0	0	0	0	0
ASDK01	1108	0	0	0	0	0	0
ASDK02	459	0	0	0	0	0	0
ASDK3	1235	0	0	0	0	0	0
ASES01	973	0	0	0	0	0	0
ASFR1	0	0	0	1028	0	0	0
ASFR2	0	1	0	792	0	0	0
ASFR3	0	0	0	1002	0	0	0
ASFR4	0	0	0	910	0	0	0
JGQH	0	831	0	0	0	0	0
JNSR	0	207	0	0	0	0	0
Test							
ASDE09	103	0	0	0	0	0	0
Wrong or strange call sign							
PACDG	0	0	0	0	8	0	0
XXXXX	1083	119	0	422	8	0	0
numer.	2	0	0	0	0	0	0

Mariner: French navy military sounding

Supervis: handled by operator

5. Global system performance

Month	Origin	Nb of messages recieved	Nb of messages in error	Percentage of messages in error	Nb of messages with operator action	Percentage of messages with operator action
2012-Jan	Offenbach	1040	3	0,29		
	Exeter	101	1	0,99		
	Telex	0	not relevant	not relevant		
	Email	272	not relevant	not relevant		
	Mariner	0	not relevant	not relevant		
	X25	0	not relevant	not relevant		
	Supervis	0	0	not relevant		
	Total	1141	4	0,35	0	0
2012-Feb	Offenbach	1172	0	0		
	Exeter	146	0	0		
	Telex	0	not relevant	not relevant		
	Email	323	not relevant	not relevant		
	Mariner	0	not relevant	not relevant		
	X25	0	not relevant	not relevant		
	Supervis	0	0	not relevant		
	Total	1318	0	0	0	0
2012-Mar	Offenbach	1422	4	0,28		
	Exeter	86	0	0		
	Telex	0	not relevant	not relevant		
	Email	342	not relevant	not relevant		
	Mariner	0	not relevant	not relevant		
	X25	0	not relevant	not relevant		
	Supervis	0	0	not relevant		
	Total	1508	4	0,27	0	0
2012-Apr	Offenbach	1292	0	0		
	Exeter	94	0	0		
	Telex	0	not relevant	not relevant		
	Email	312	not relevant	not relevant		
	Mariner	16	not relevant	not relevant		
	X25	0	not relevant	not relevant		
	Supervis	0	0	not relevant		
	Total	1386	0	0	0	0
2012-May	Offenbach	1225	0	0		
	Exeter	71	0	0		
	Telex	0	not relevant	not relevant		
	Email	312	not relevant	not relevant		
	Mariner	0	not relevant	not relevant		
	X25	0	not relevant	not relevant		
	Supervis	0	0	not relevant		
	Total	1296	0	0	0	0
2012-Jun	Offenbach	1371	0	0		
	Exeter	122	0	0		
	Telex	0	not relevant	not relevant		
	Email	412	not relevant	not relevant		
	Mariner	0	not relevant	not relevant		
	X25	0	not relevant	not relevant		
	Supervis	0	0	not relevant		
	Total	1493	0	0	0	0

2012-Jul	Offenbach	1311	0	0		
	Exeter	156	0	0		
	Telex	0	not relevant	not relevant		
	Email	383	not relevant	not relevant		
	Mariner	0	not relevant	not relevant		
	X25	0	not relevant	not relevant		
	Supervis	0	0	not relevant		
	Total	1467	0	0	0	0
2012-Aug	Offenbach	1414	0	0		
	Exeter	285	0	0		
	Telex	0	not relevant	not relevant		
	Email	368	not relevant	not relevant		
	Mariner	0	not relevant	not relevant		
	X25	0	not relevant	not relevant		
	Supervis	0	0	not relevant		
	Total	1699	0	0	0	0
2012-Sep	Offenbach	1093	0	0		
	Exeter	24	0	0		
	Telex	0	not relevant	not relevant		
	Email	332	not relevant	not relevant		
	Mariner	0	not relevant	not relevant		
	X25	0	not relevant	not relevant		
	Supervis	0	0	not relevant		
	Total	1117	0	0	0	0
2012-Oct	Offenbach	1026	0	0		
	Exeter	0	0	-1,#J		
	Telex	0	not relevant	not relevant		
	Email	384	not relevant	not relevant		
	Mariner	0	not relevant	not relevant		
	X25	0	not relevant	not relevant		
	Supervis	0	0	not relevant		
	Total	1026	0	0	0	0
2012-Nov	Offenbach	1221	0	0		
	Exeter	16	0	0		
	Telex	0	not relevant	not relevant		
	Email	320	not relevant	not relevant		
	Mariner	0	not relevant	not relevant		
	X25	0	not relevant	not relevant		
	Supervis	0	0	not relevant		
	Total	1237	0	0	0	0
2012-Dec	Offenbach	1732	0	0		
	Exeter	57	0	0		
	Telex	0	not relevant	not relevant		
	Email	394	not relevant	not relevant		
	Mariner	0	not relevant	not relevant		
	X25	0	not relevant	not relevant		
	Supervis	0	0	not relevant		
	Total	1789	0	0	0	0
Total	Offenbach	15319	7	0,05		
	Exeter	1158	1	0,09		
	Telex	0	0	not relevant		
	Email	4154	217	5,22		
	Mariner	16	not relevant	not relevant		
	X25	0	not relevant	not relevant		
	Supervis	0	0	not relevant		
	Total	20647	8	0,05	0	0

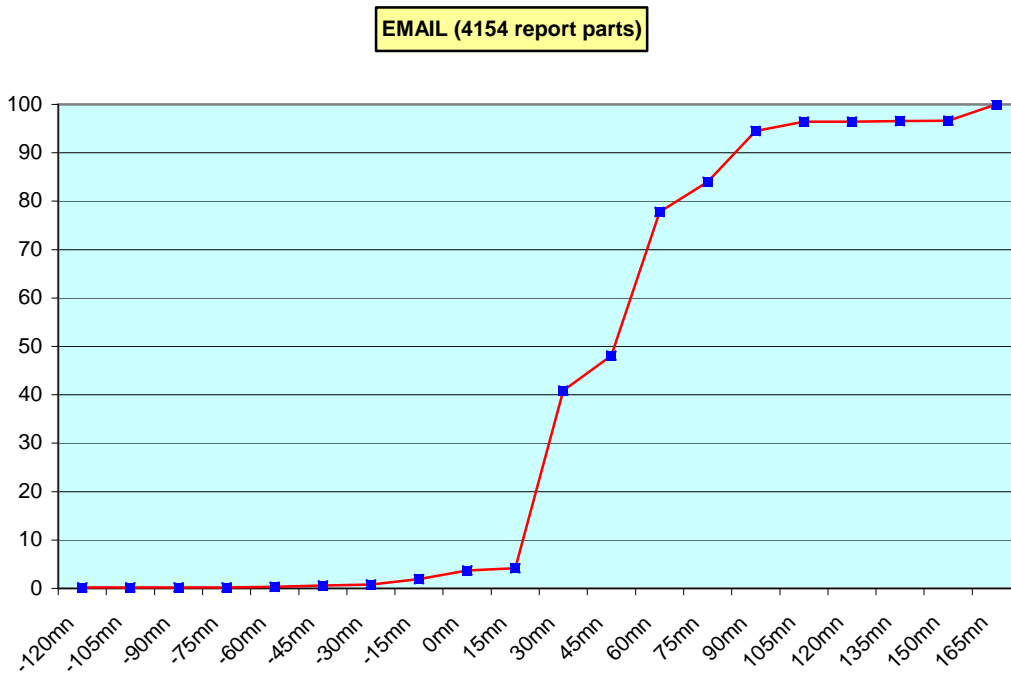
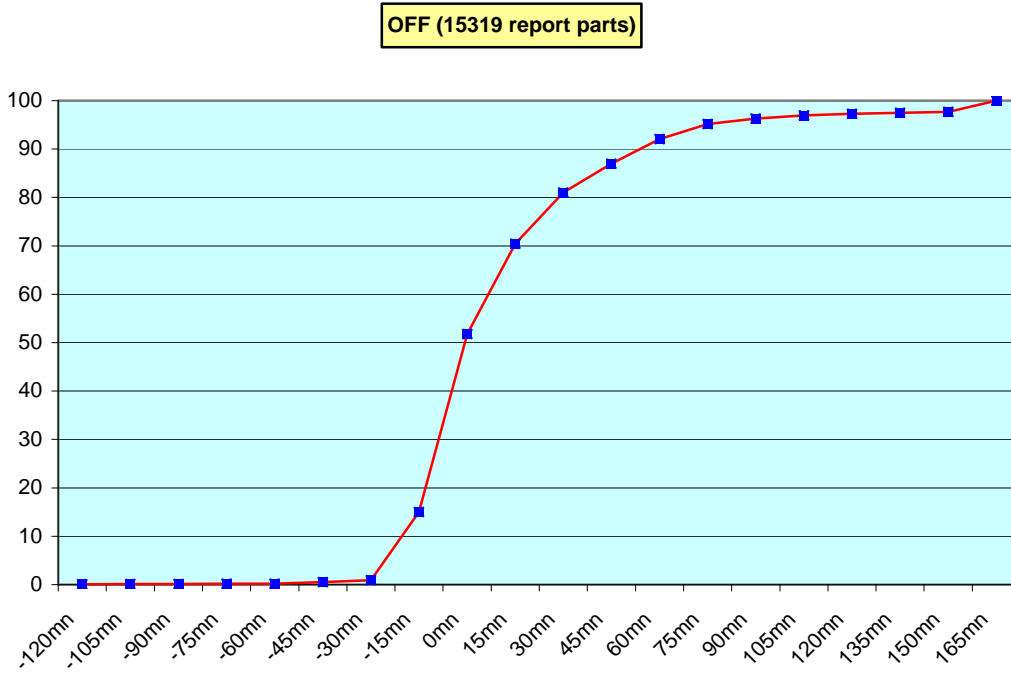
Remark: Email messages were excluded from the number of messages in error and from the relative percentage as values are regarded as not relevant. Not relevant percentages are due to not relevant values or to a total amount of data equal to zero.

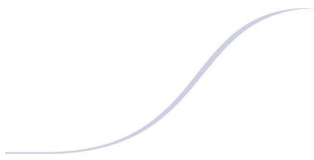
6. Global result of the syntactic check for the messages for each call sign.

Call sign	Nb of messages received	Nb of messages in error	Percentage of messages in error	Nb of messages with operator action	Percentage of messages with operator action
ASEU01	683	0	0	0	0
ASEU02	686	0	0	0	0
ASEU03	430	0	0	0	0
ASEU04	360	0	0	0	0
ASEU05	755	0	0	0	0
ASEU06	933	0	0	0	0
ASDE01	1435	0	0	0	0
ASDE02	1442	0	0	0	0
ASDE03	1070	0	0	0	0
ASDE04	1041	0	0	0	0
DBLK	1471	0	0	0	0
ASDK01	1108	1	0,09	0	0
ASDK02	459	4	0,87	0	0
ASDK3	1235	2	0,16	0	0
ASES01	973	0	0	0	0
ASFR1	1028	0	0	0	0
ASFR2	793	1	0,13	0	0
ASFR3	1002	0	0	0	0
ASFR4	910	0	0	0	0
JGQH	831	0	0	0	0
JNSR	207	0	0	0	0
Test					
ASDE09	103	0	0	0	0
Wrong or strange call sign					
PACDG	8	0	0	0	0
XXXXX	1632	0	0	0	0
numer,	2	0	0	0	0

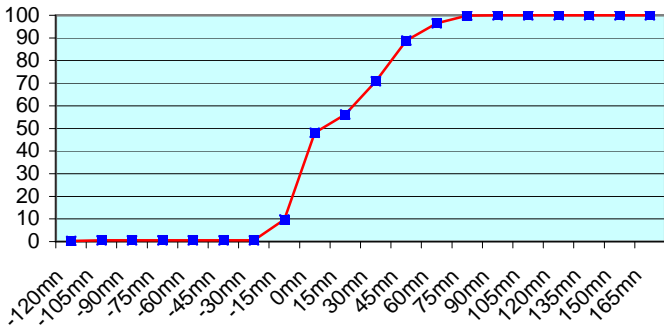
Remark: Data transmitted through email displayed an error rate close to 100% due to email syntax and were thus regarded as not relevant and excluded from errors total amount.

7. Mean time before the integration of the messages in the GTS in Toulouse. HH is the synoptic hour of reference.

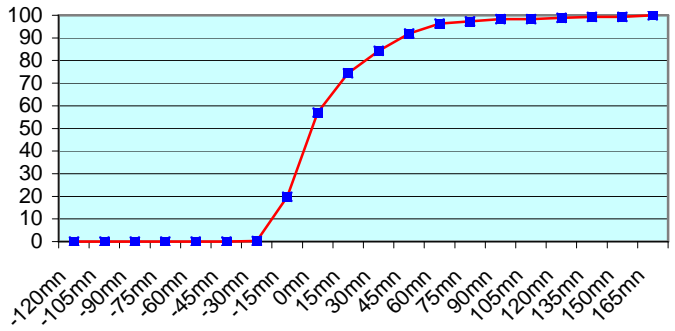




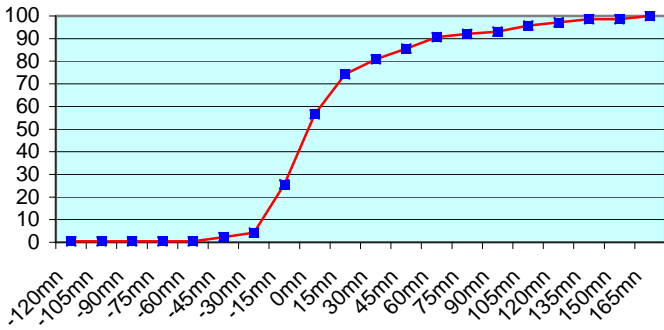
ASEU01 (683 report parts) Offenbach 683



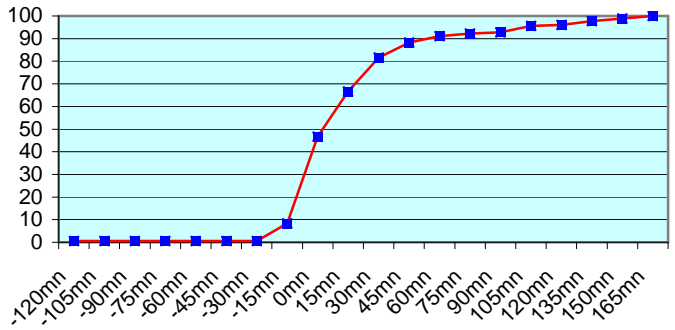
ASEU02 (686 report parts) Offenbach 686



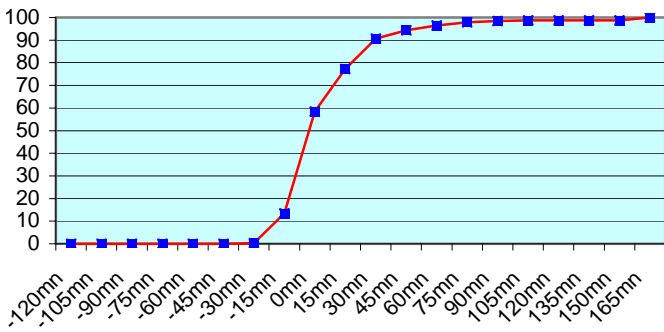
ASEU03 (430 report parts) Offenbach 430



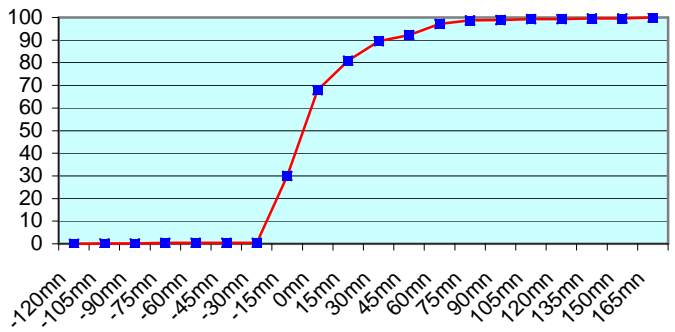
ASEU04 (360 report parts) Offenbach 360



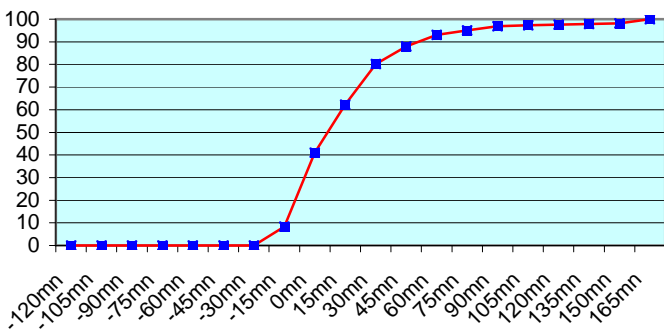
ASEU05 (755 report parts) Offenbach 755



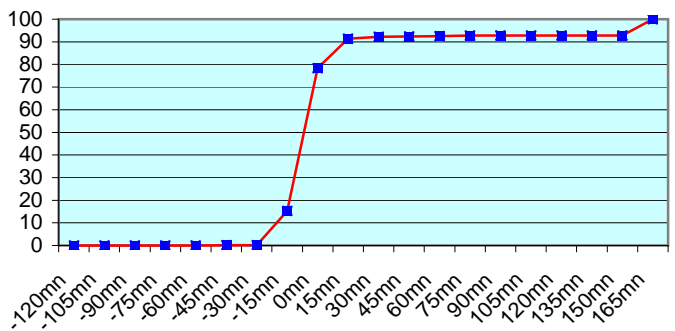
ASEU06 (933 report parts) Offenbach 933

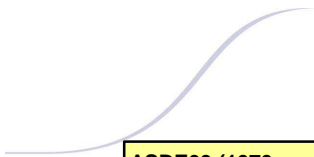


ASDE01 (1435 report parts) Offenbach 1435

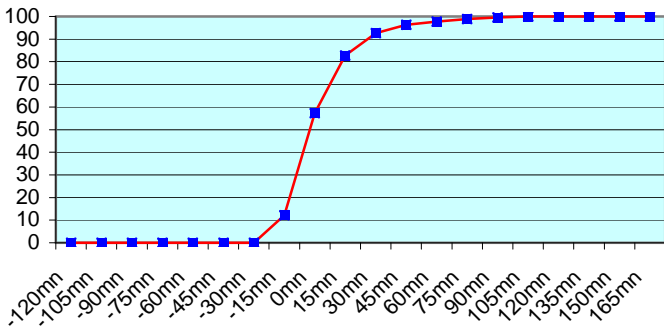


ASDE02 (1442 report parts) Offenbach 1442

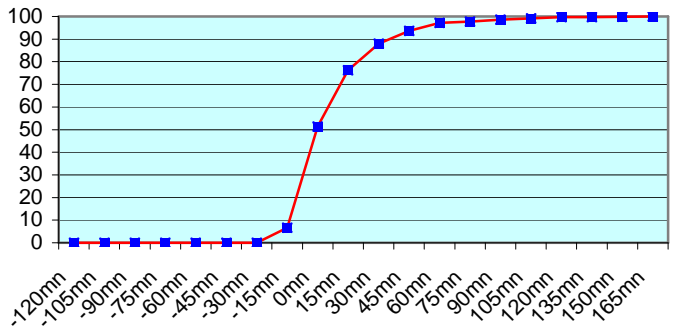




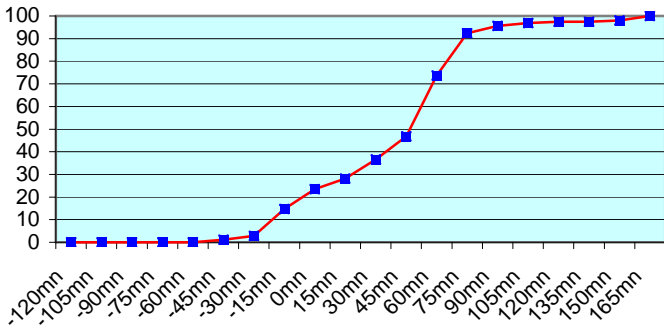
ASDE03 (1070 report parts) Offenbach 1070



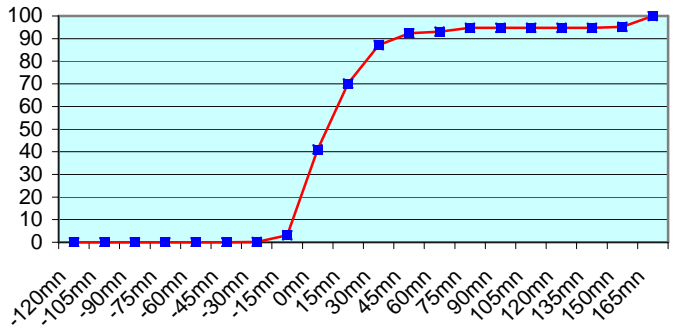
ASDE04 (1041 report parts) Offenbach 1041



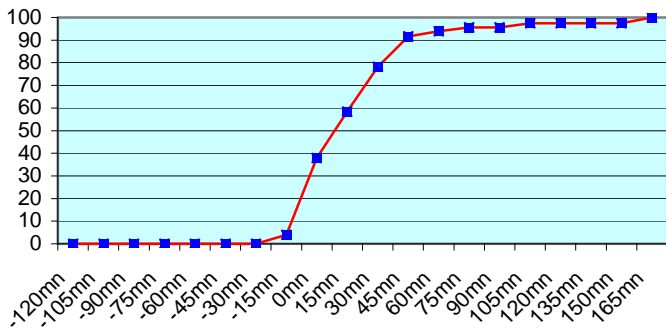
DBLK (1471 report parts) Offenbach 1471



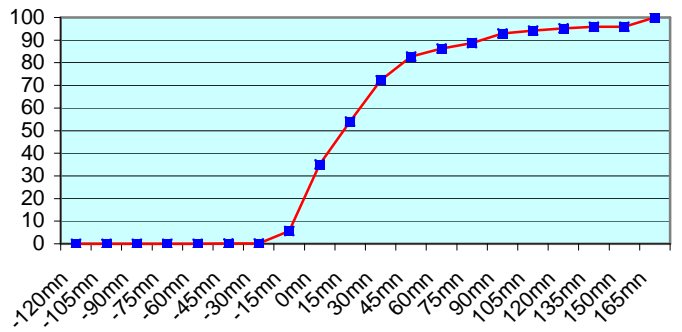
ASDK01 (1108 report parts) Offenbach 1108



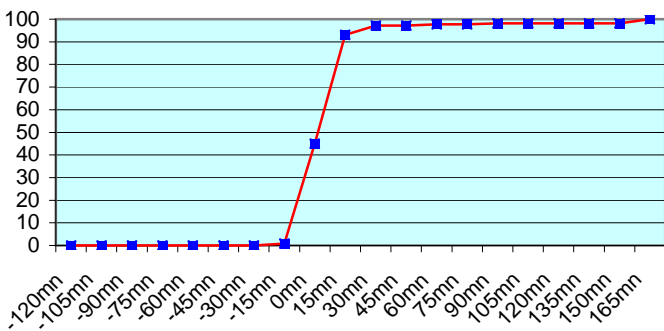
ASDK02 (459 report parts) Offenbach 459



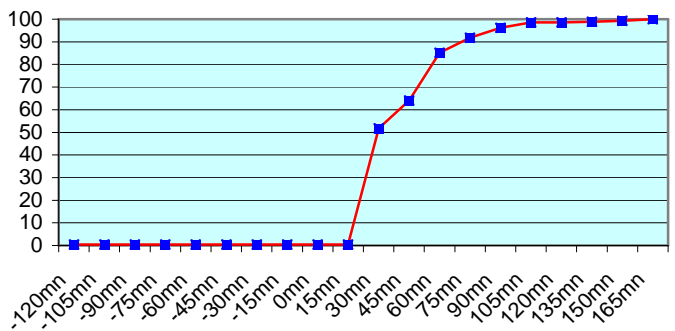
ASDK3 (1235 report parts) Offenbach 1235

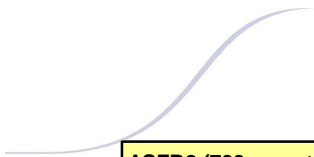


ASES01 (973 report parts) Offenbach 973

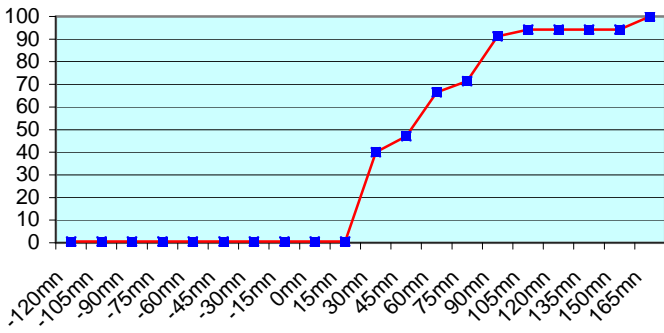


ASFR1 (1028 report parts) Email 1028

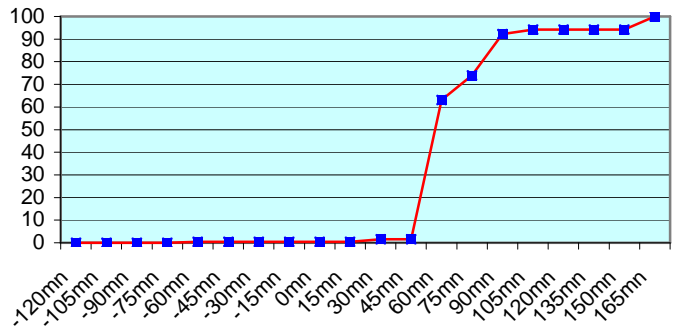




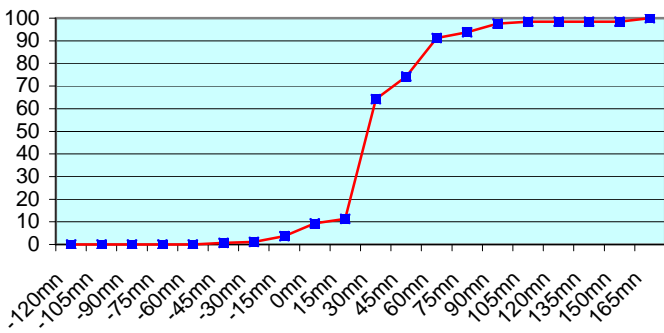
ASFR2 (793 report parts) Exeter 1 Email 792



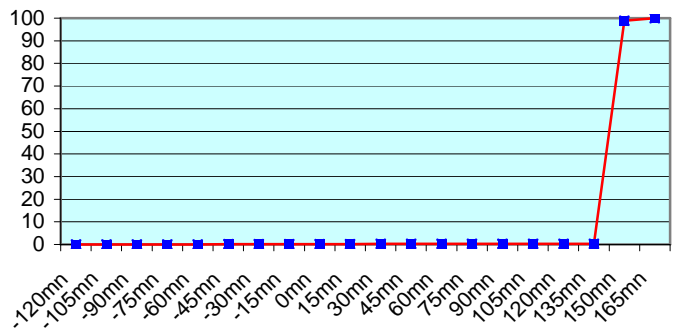
ASFR3 (1002 report parts) Email 1002



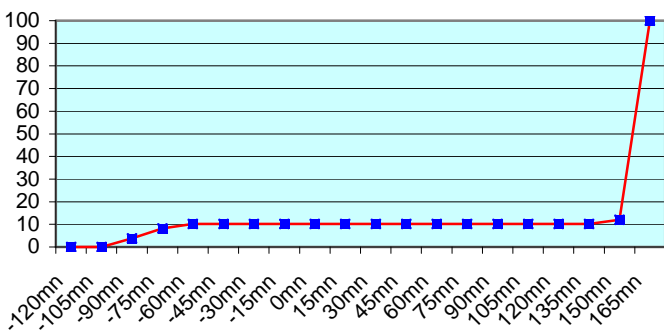
ASFR4 (910 report parts) Email 910



JGQH (831 report parts) Exeter 831



JNSR (207 report parts) Exeter 207



During 2012, Météo-France Toulouse received 5161 upper air messages (TEMP) from ships. This number of messages is less than it was in 2011 (6120). One of the main reason is the reduction of the number of messages received from Japanese ships (-1863 messages) and from one Danish ship (-891 messages).

Call Sign	Messages received in 2011	Messages received in 2012	Difference 2012-2011
ASEU01	688	683	-5
ASEU02	493	686	+193
ASEU03	610	430	-180
ASEU04	519	360	-159
ASEU05	889	755	-134
ASEU06(ASGB01)	170 + 298	933	+465
ASDE01	1376	1435	+59
ASDE02	1249	1442	+193
ASDE03	937	1070	+133
ASDE04	1246	1041	-205
DBLK	1524	1471	-53
DFCG	76	0	-76
ASDK01	1355	1108	-247
ASDK02	1350	459	-891
ASDK3	1347	1235	-112
ASES01	1008	973	-35
ASFR1	920	1028	+108
ASFR2	1030	793	-237
ASFR3	741	1002	+261
ASFR4	1037	910	127
JGQH	894	831	-63
JNSR	2025	207	-1818
Test ASDE09	148	103	-45
Wrong or strange call sign	2547	1642	-905

The reports were received from 22 different call signs; one of them was a test call sign (ASDE09). The quality of the ASAP reports was generally of a high standard, with only a small percentage of erroneous data.

Some corrupted call signs can be seen from time to time but less than in 2011 (-905 messages).

For any comment or remark please contact Météo-France Toulouse DSO/DOA department

Gérard Rey (gerard.rey@meteo.fr)

Hugues Jardat (hugues.jardat@meteo.fr)