

Joint WMO/IOC Technical Commission for
Oceanography - Ship Observation Team

End-to-end report of the ASAP data dissemination performance

October to December 2011

1. Introduction

Météo-France is in charge of a end-to-end report of the ASAP data dissemination performance.

The matter of this paper is to evaluate the results of the three last months (October 2011 – December 2011).

2. Information available at Météo-France

TEMP-SHIP messages are received at LFPW (Toulouse) from EGRR (Exeter), EDZW (Offenbach) and Email.

The following information is available :

Reception at LFPW	Broadcast by LFPW
Call sign	Call sign
Header	Channel
Channel	Broadcast date
Reception date	Time lapse
Size	Broadcast size
Format	Recipient
Error	
Operator	

3. List of call signs available

Country	Call sign	Country	Call sign
Denmark	ASDK01	Japan	JCCX
	ASDK02		JGQH
	ASDK3		JIVB
E-ASAP	ASEU01		JDWX
	ASEU02		JNSR
	ASEU03	South Africa	ZSAF
	ASEU04	Spain	ASES01
	ASEU05	USA	WTEC
	ASEU06		
France	ASFR1		
	ASFR2		
	ASFR3		
	ASFR4		
Germany	ASDE01		
	ASDE02		
	ASDE03		
	ASDE04	Test	SHIP
	DBLK		ASDE09
	DFCG		

4. Origin of the messages

Call sign	Offenbach	Exeter	Telex	Email	Mariner	Supervis	X25
ASEU01	40	0	0	0	0	0	0
ASEU02	122	0	0	0	0	0	0
ASEU03	90	0	0	0	0	0	0
ASEU04	94	0	0	0	0	0	0
ASEU05	258	0	0	0	0	0	0
ASEU06	156	0	0	0	0	0	0
ASDE01	248	0	0	0	0	0	0
ASDE02	164	0	0	0	0	0	0
ASDE03	222	0	0	0	0	0	0
ASDE04	254	0	0	0	0	0	0
DBLK	236	0	0	0	0	0	0
DFCG	76	0	0	0	0	0	0
ASDK01	288	0	0	0	0	0	0
ASDK02	232	0	0	0	0	0	0
ASDK3	285	0	0	0	0	0	0
ASES01	274	0	0	0	0	0	0
ASFR1	0	0	0	203	0	0	0
ASFR2	0	0	0	232	0	4	0
ASFR3	0	0	0	109	0	0	0
ASFR4	0	0	0	248	0	0	0
JGQH	0	44	0	0	0	0	0
JNSR	0	1883	0	0	0	0	0
Test							
ASDE09	60	0	0	0	0	0	0
Wrong or strange call sign							
XXXXX	268	134	0	87	0	6	0

Mariner: French navy military sounding
 Supervis: handled by operator

5. Global system performance

Month	Origin	Nb of messages received	Nb of messages in error	Percentage of messages in error	Nb of messages with operator action	Percentage of messages with operator action
2011-Oct	Offenbach	1046	0	0		
	Exeter	899	0	0		
	Telex	0	not relevant	not relevant		
	Email	312	not relevant	not relevant		
	Mariner	0	not relevant	not relevant		
	X25	0	not relevant	not relevant		
	Supervis	4	0	0		
	Total	1945	0	0	4	0,21
2011-Nov	Offenbach	1548	0	0		
	Exeter	1022	0	0		
	Telex	0	not relevant	not relevant		
	Email	326	not relevant	not relevant		
	Mariner	0	not relevant	not relevant		
	X25	0	not relevant	not relevant		
	Supervis	6	0	0		
	Total	2570	0	0	6	0,23
2011-Dec	Offenbach	773	0	0		
	Exeter	140	0	0		
	Telex	0	not relevant	not relevant		
	Email	241	not relevant	not relevant		
	Mariner	0	not relevant	not relevant		
	X25	0	not relevant	not relevant		
	Supervis	0	0	not relevant		
	Total	913	0	0	0	0
Total	Offenbach	3367	0	0		
	Exeter	2061	0	0		
	Telex	0	0	not relevant		
	Email	879	340	38,68		
	Mariner	0	not relevant	not relevant		
	X25	0	not relevant	not relevant		
	Supervis	10	0	0		
	Total	6317	0	0	10	0,18

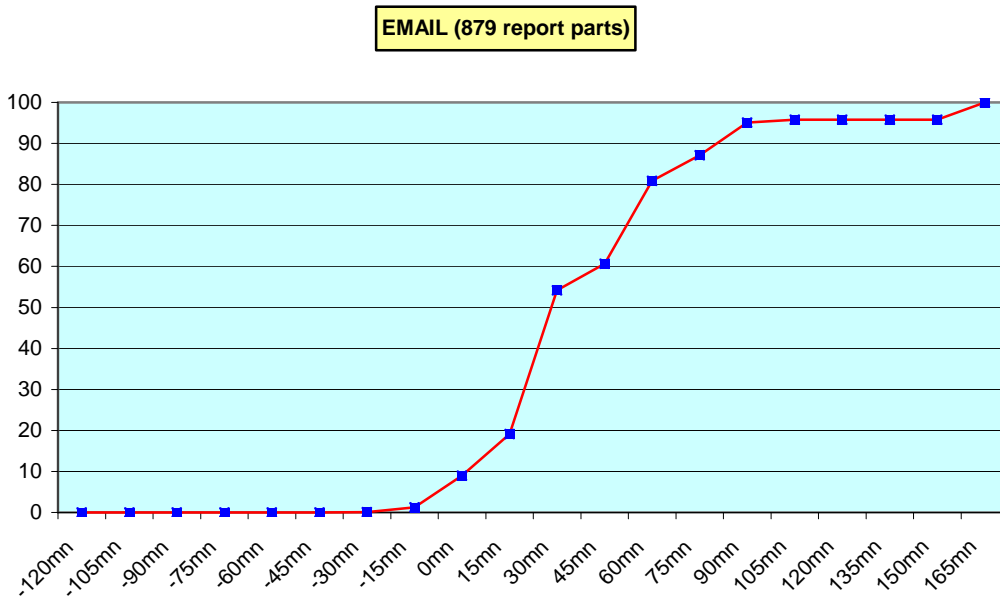
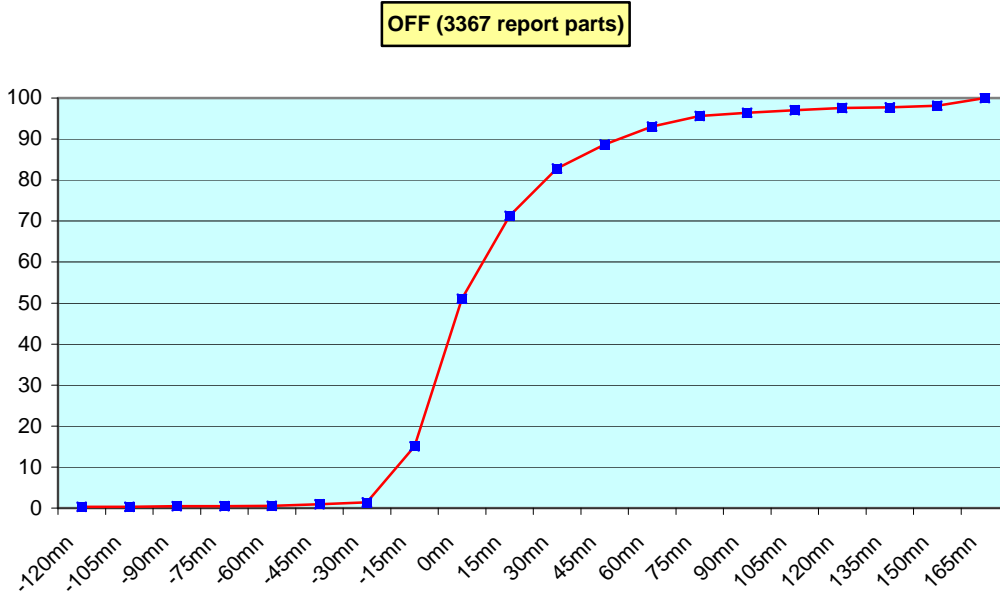
Remark: Email messages were excluded from the number of messages in error and from the relative percentage as values are regarded as not relevant. Not relevant percentages are due to not relevant values or to a total amount of data equal to zero.

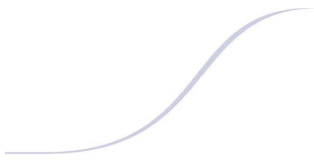
6. Global result of the syntactic check for the messages for each call sign.

Call sign	Nb of messages received	Nb of messages in error	Percentage of messages in error	Nb of messages with operator action	Percentage of messages with operator action
ASEU01	40	0	0	0	0
ASEU02	122	0	0	0	0
ASEU03	90	0	0	0	0
ASEU04	94	0	0	0	0
ASEU05	258	0	0	0	0
ASEU06	156	0	0	0	0
ASDE01	248	0	0	0	0
ASDE02	164	0	0	0	0
ASDE03	222	0	0	0	0
ASDE04	254	0	0	0	0
DBLK	236	0	0	0	0
DFCG	76	0	0	0	0
ASDK01	288	0	0	0	0
ASDK02	232	0	0	0	0
ASDK3	285	0	0	0	0
ASES01	274	0	0	0	0
ASFR1	203	0	0	0	0
ASFR2	236	0	0	4	1,69
ASFR3	109	0	0	0	0
ASFR4	248	0	0	0	0
JGQH	44	0	0	0	0
JNSR	1883	0	0	0	0
Test					
ASDE09	60	0	0	0	0
Wrong or strange call sign					
XXXXX	495	0	0	6	1,21

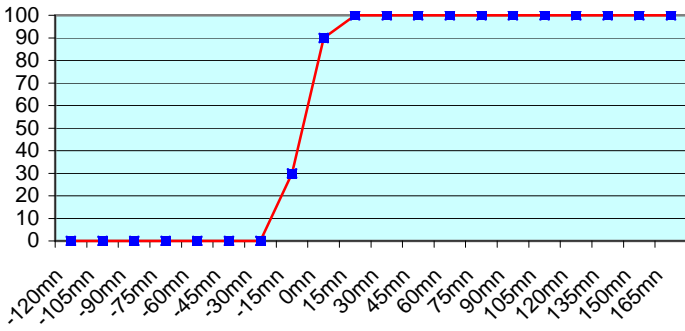
Remark: Data transmitted through email displayed an error rate close to 100% due to email syntax and were thus regarded as not relevant and excluded from errors total amount.

7. Mean time before the integration of the messages in the GTS in Toulouse. HH is the synoptic hour of reference.

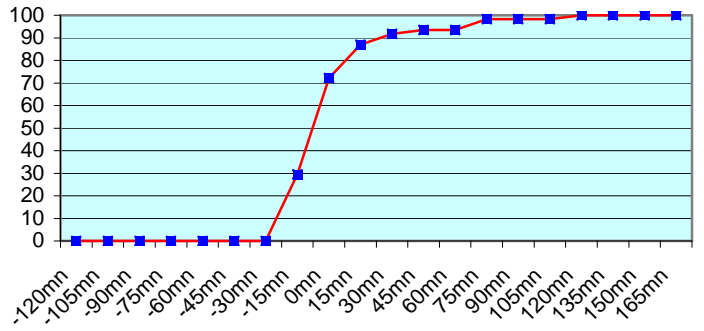




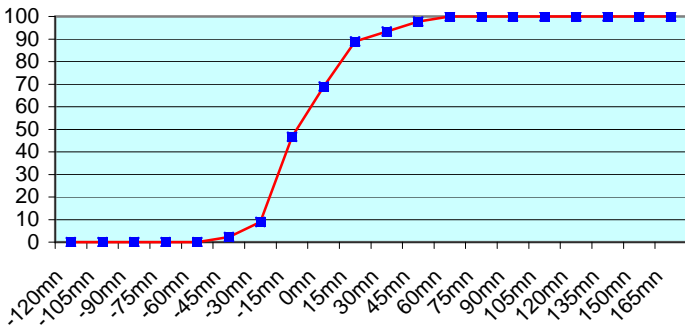
ASEU01 (40 report parts) Offenbach 40



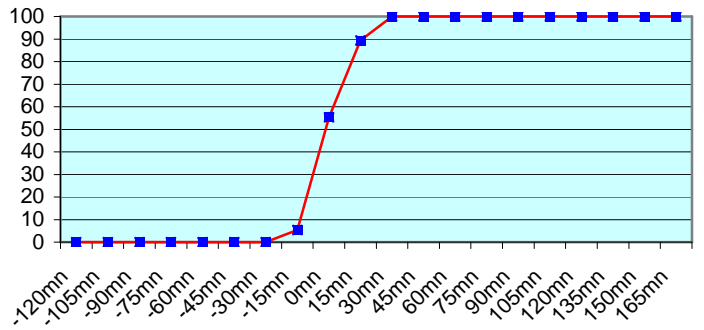
ASEU02 (122 report parts) Offenbach 122



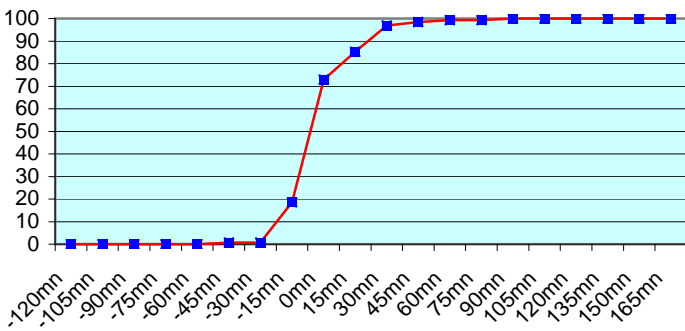
ASEU03 (90 report parts) Offenbach 90



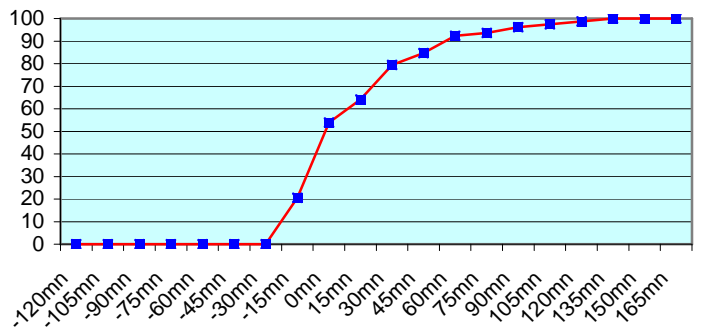
ASEU04 (94 report parts) Offenbach 94



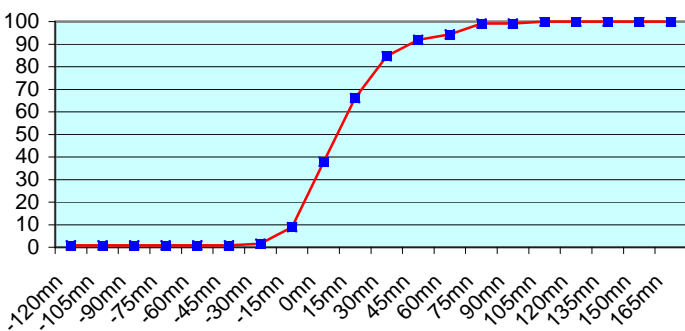
ASEU05 (258 report parts) Offenbach 258



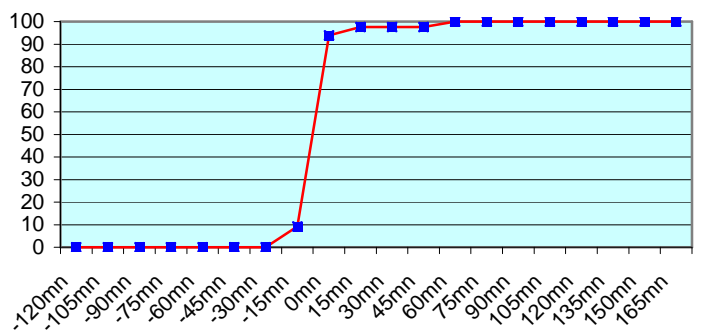
ASEU06 (156 report parts) Offenbach 156

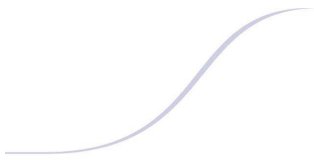


ASDE01 (248 report parts) Offenbach 248

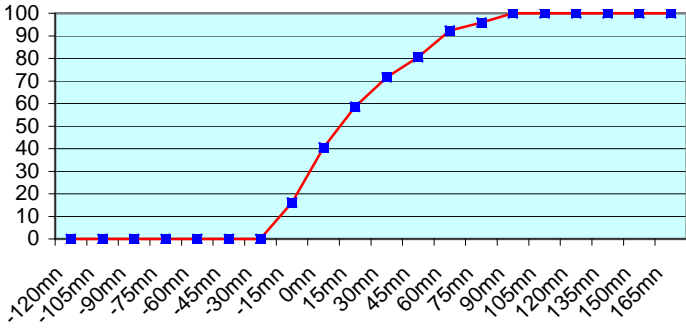


ASDE02 (164 report parts) Offenbach 164

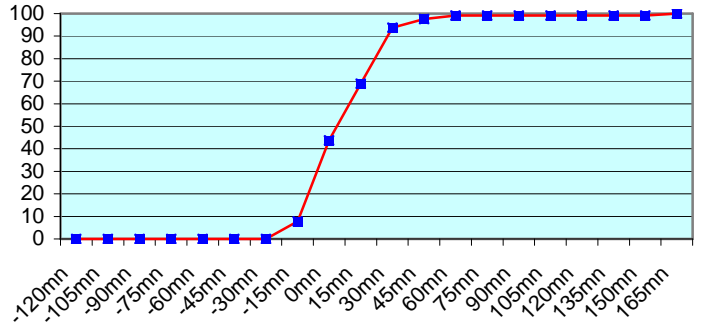




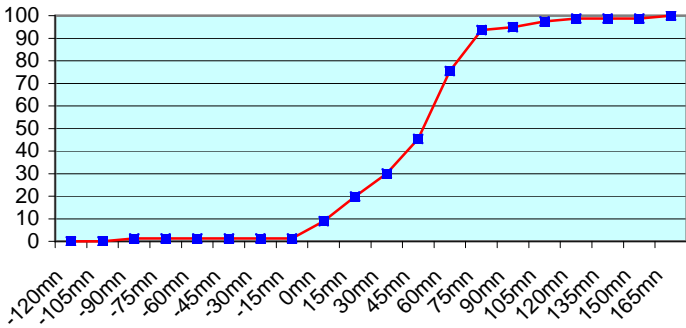
ASDE03 (222 report parts) Offenbach 222



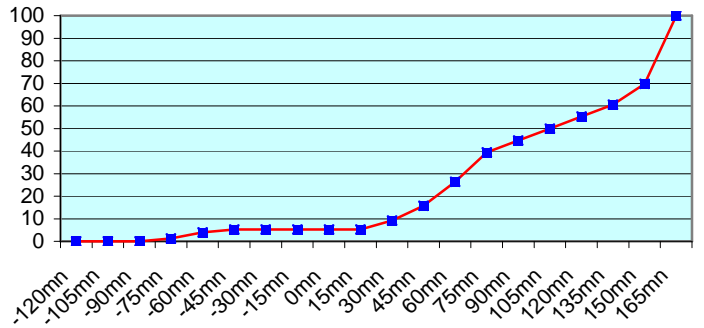
ASDE04 (254 report parts) Offenbach 254



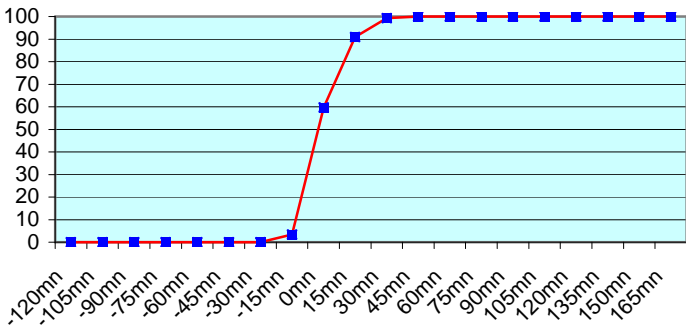
DBLK (236 report parts) Offenbach 236



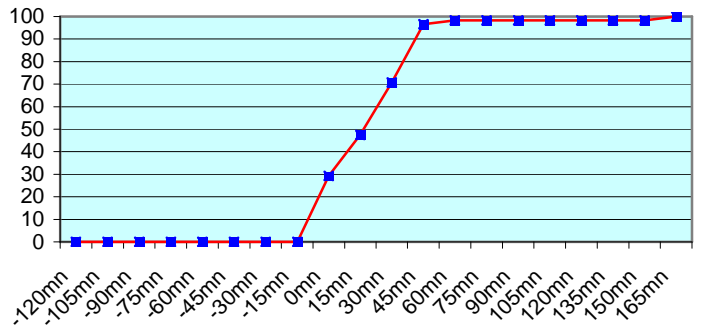
DFCG (76 report parts) Offenbach 76



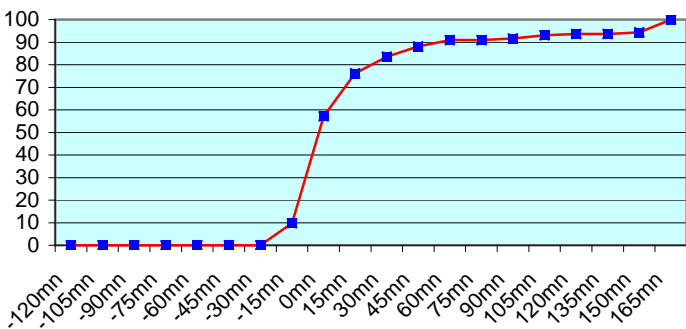
ASDK01 (288 report parts) Offenbach 288



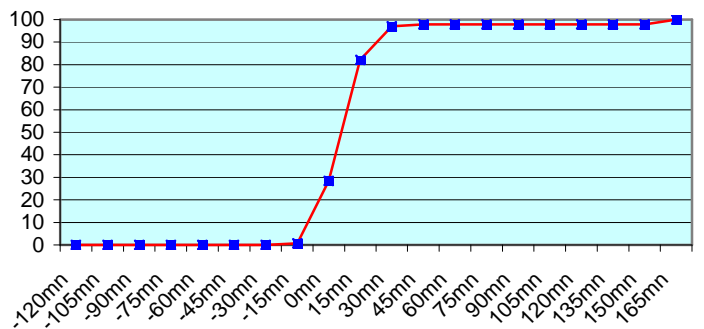
ASDK02 (232 report parts) Offenbach 232

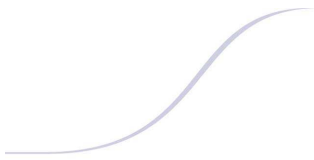


ASDK3 (285 report parts) Offenbach 285

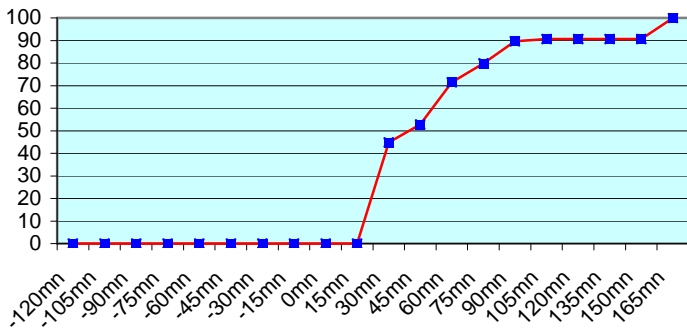


ASES01 (274 report parts) Offenbach 274

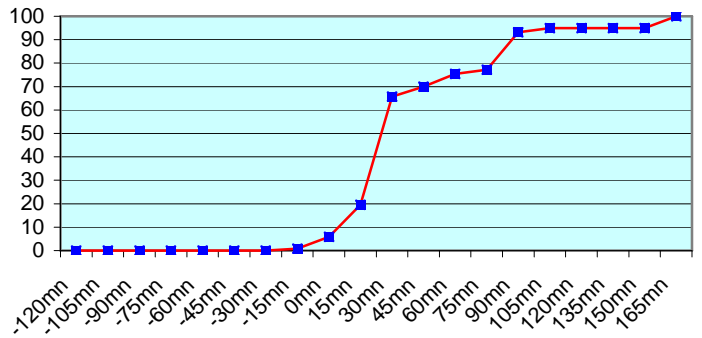




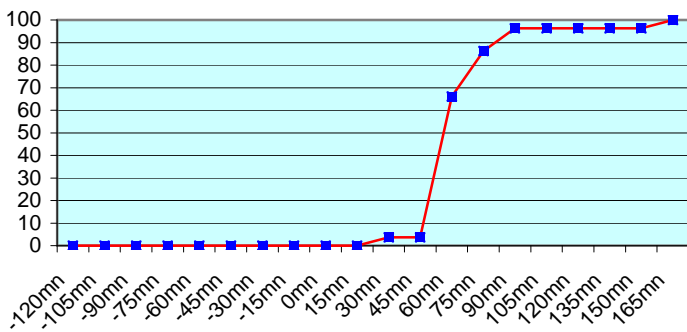
ASFR1 (203 report parts) Email 203



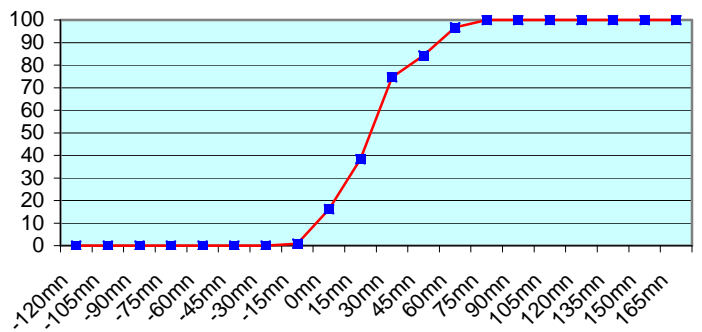
ASFR2 (236 report parts) Email 232 with supervision 4



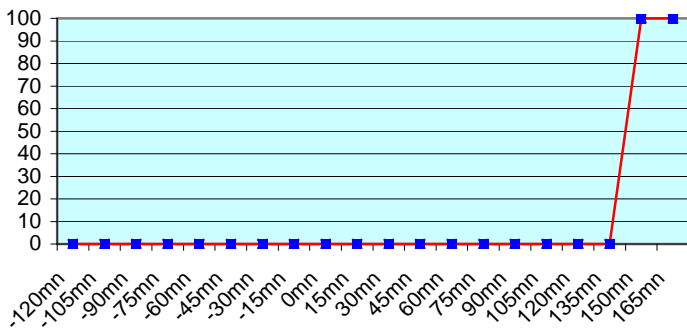
ASFR3 (109 report parts) Email 109



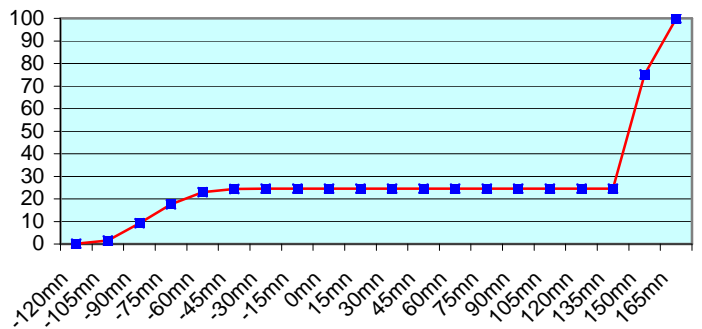
ASFR4 (248 report parts) Email 248



JGQH (44 report parts) Exeter 44



JNSR (1883 report parts) Exeter 1883



DBLK and DBLK (German Research Vessel) transmitted some messages with delay but we have no information about the sounding operations on board (launch time...)
Due to late launch time, ASFR1 and ASFR2 transmitted some messages with delay.
No particular problem was noticed concerning the other European ships.

Japanese ships follow a different procedure with an important shift between the sending of the message and the synoptic hour. So, no graphic was displayed about Exeter.

For any comment or remark please contact Météo-France Toulouse DSO/DOA department
Gérard Rey (gerard.rey@meteo.fr)
Hugues Jardat (hugues.jardat@meteo.fr)