

Joint WMO/IOC Technical Commission for  
Oceanography - Ship Observation Team

# **End-to-end report of the ASAP data dissemination performance**

## **July to September 2011**

## 1. Introduction

Météo-France is in charge of a end-to-end report of the ASAP data dissemination performance.

The matter of this paper is to evaluate the results of the three last months (July 2011 – September 2011).

## 2. Information available at Météo-France

TEMP-SHIP messages are received at LFPW (Toulouse) from EGRR (Exeter), EDZW (Offenbach) and Email.

The following information is available :

Reception at LFPW	Broadcast by LFPW
Call sign	Call sign
Header	Channel
Channel	Broadcast date
Reception date	Time lapse
Size	Broadcast size
Format	Recipient
Error	
Operator	

### 3. List of call signs available

<b>Country</b>	<b>Call sign</b>	<b>Country</b>	<b>Call sign</b>
Denmark	ASDK01	Japan	JCCX
	ASDK02		JGQH
	ASDK3		JIVB
E-ASAP	ASEU01		JDWX
	ASEU02		JNSR
	ASEU03	South Africa	ZSAF
	ASEU04	Spain	ASES01
	ASEU05	United Kingdom	ASGB01
France	ASFR1	USA	WTEC
	ASFR2		
	ASFR3		
	ASFR4		
Germany	ASDE01		
	ASDE02		
	ASDE03		
	ASDE04	Test	SHIP
	DBLK		ASDE09

#### 4. Origin of the messages

Call sign	Offenbach	Exeter	Telex	Email	Mariner	Supervis	X25
ASEU01	240	0	0	0	0	0	0
ASEU02	88	0	0	0	0	0	0
ASEU03	154	0	0	0	0	0	0
ASEU04	47	0	0	0	0	0	0
ASEU05	379	0	0	0	0	0	0
ASDE01	374	0	0	0	0	0	0
ASDE02	466	0	0	0	0	0	0
ASDE03	238	0	0	0	0	0	0
ASDE04	398	0	0	0	0	0	0
DBLK	558	0	0	0	0	0	0
ASGB01	20	0	0	0	0	0	0
ASDK01	378	0	0	0	0	0	0
ASDK02	384	0	0	0	0	0	0
ASDK3	379	0	0	0	0	0	0
ASES01	288	0	0	0	0	0	0
ASFR1	0	0	0	247	0	0	0
ASFR2	0	0	0	266	0	4	0
ASFR3	0	0	0	121	0	0	0
ASFR4	0	0	0	302	0	0	0
JGQH	0	378	0	0	0	0	0
JNSR	0	118	0	0	0	0	0
Test							
ASDE09	32	0	0	0	0	0	0
Wrong or strange call sign							
ASEU06	14	0	0	0	0	0	0
XXXXX	154	72	0	119	0	0	0

Mariner: French navy military sounding  
 Supervis: handled by operator

## 5. Global system performance

Month	Origin	Nb of messages received	Nb of messages in error	Percentage of messages in error	Nb of messages with operator action	Percentage of messages with operator action
2011-Jul	Offenbach	1831	0	0		
	Exeter	200	0	0		
	Telex	0	not relevant	not relevant		
	Email	364	not relevant	not relevant		
	Mariner	0	not relevant	not relevant		
	X25	0	not relevant	not relevant		
	Supervis	4	0	0		
	Total	2031	0	0	4	0,2
2011-Aug	Offenbach	1581	0	0		
	Exeter	158	0	0		
	Telex	0	not relevant	not relevant		
	Email	272	not relevant	not relevant		
	Mariner	0	not relevant	not relevant		
	X25	0	not relevant	not relevant		
	Supervis	0	0	not relevant		
	Total	1739	0	0	0	0
2011-Sep	Offenbach	1179	0	0		
	Exeter	210	0	0		
	Telex	0	not relevant	not relevant		
	Email	419	not relevant	not relevant		
	Mariner	0	not relevant	not relevant		
	X25	0	not relevant	not relevant		
	Supervis	0	0	not relevant		
	Total	1389	0	0	0	0
Total	Offenbach	4591	0	0		
	Exeter	568	0	0		
	Telex	0	0	not relevant		
	Email	1055	631	59,81		
	Mariner	0	not relevant	not relevant		
	X25	0	not relevant	not relevant		
	Supervis	4	0	0		
	Total	6218	0	0	4	0,08

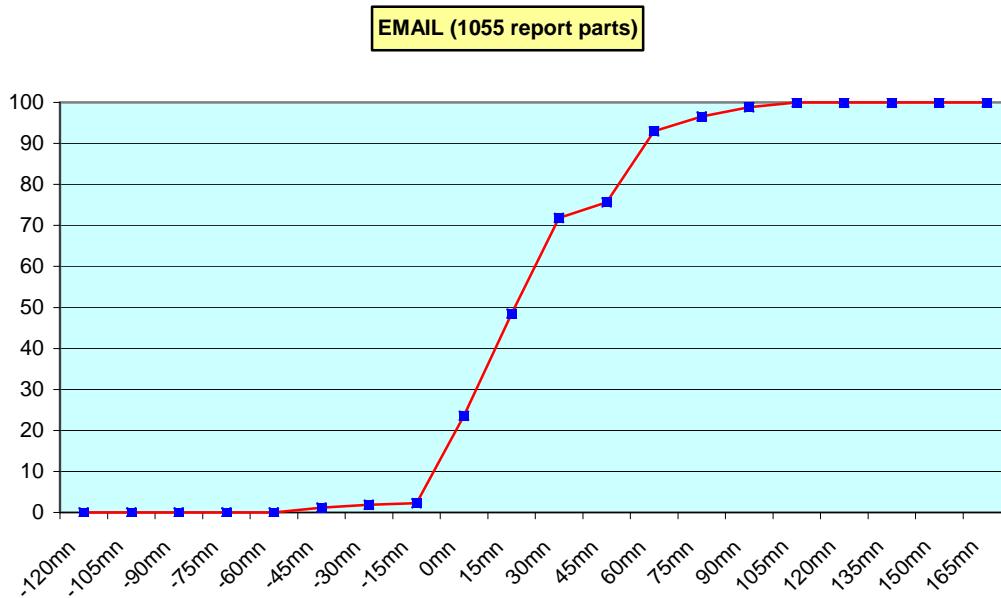
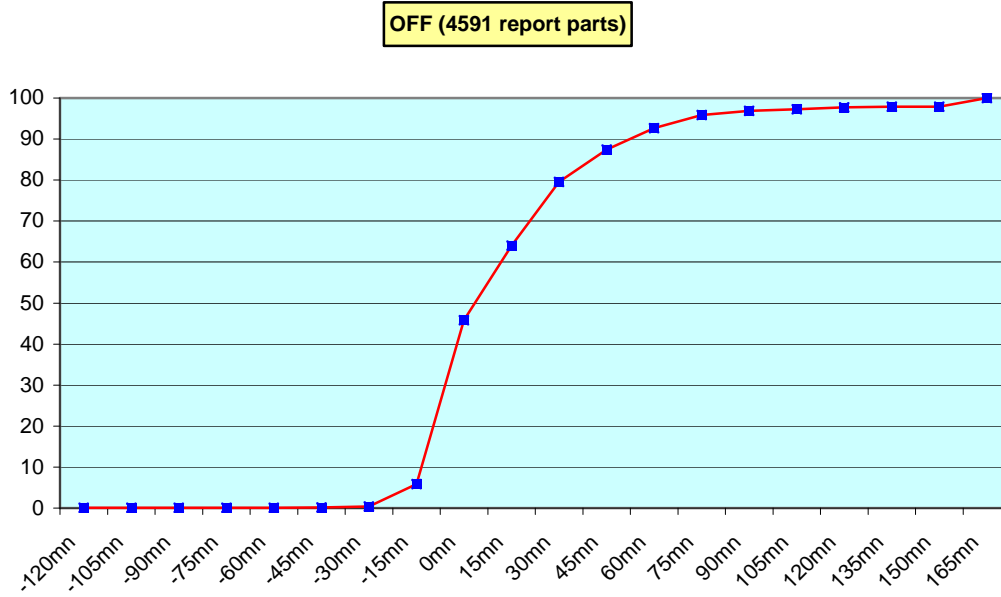
**Remark:** Email messages were excluded from the number of messages in error and from the relative percentage as values are regarded as not relevant. Not relevant percentages are due to not relevant values or to a total amount of data equal to zero.

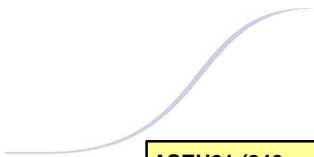
## 6. Global result of the syntactic check for the messages for each call sign.

Call sign	Nb of messages received	Nb of messages in error	Percentage of messages in error	Nb of messages with operator action	Percentage of messages with operator action
ASEU01	240	0	0	0	0
ASEU02	88	0	0	0	0
ASEU03	154	0	0	0	0
ASEU04	47	0	0	0	0
ASEU05	379	0	0	0	0
ASDE01	374	0	0	0	0
ASDE02	466	0	0	0	0
ASDE03	238	0	0	0	0
ASDE04	398	0	0	0	0
DBLK	558	0	0	0	0
ASGB01	20	0	0	0	0
ASDK01	378	0	0	0	0
ASDK02	384	0	0	0	0
ASDK3	379	0	0	0	0
ASES01	288	0	0	0	0
ASFR1	247	0	0	0	0
ASFR2	270	0	0	4	1,48
ASFR3	121	0	0	0	0
ASFR4	302	0	0	0	0
JGQH	378	0	0	0	0
JNSR	118	0	0	0	0
Test					
ASDE09	32	0	0	0	0
Wrong or strange call sign					
ASEU06	14	0	0	0	0
XXXXX	345	0	0	0	0

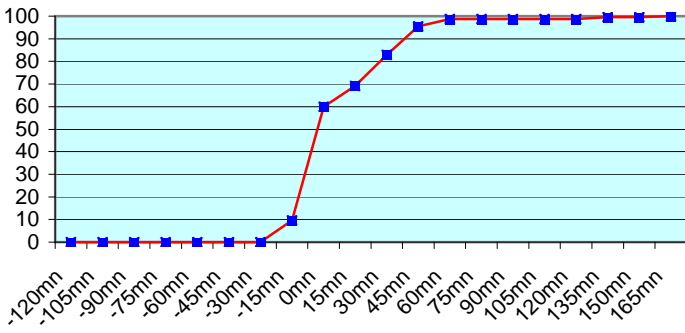
**Remark:** Data transmitted through email displayed an error rate close to 100% due to email syntax and were thus regarded as not relevant and excluded from errors total amount.

7. Mean time before the integration of the messages in the GTS in Toulouse. HH is the synoptic hour of reference.

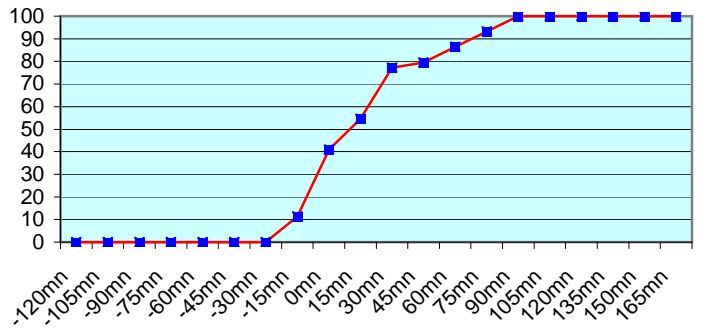




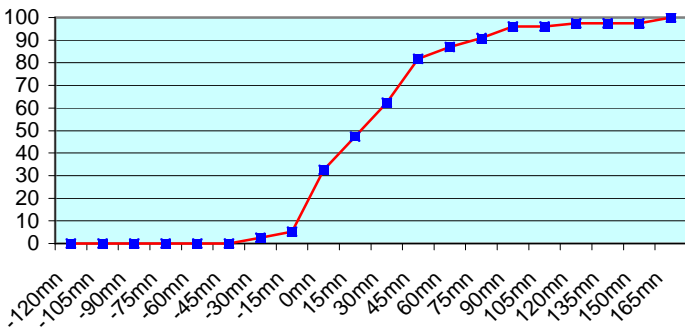
**ASEU01 (240 report parts) Offenbach 240**



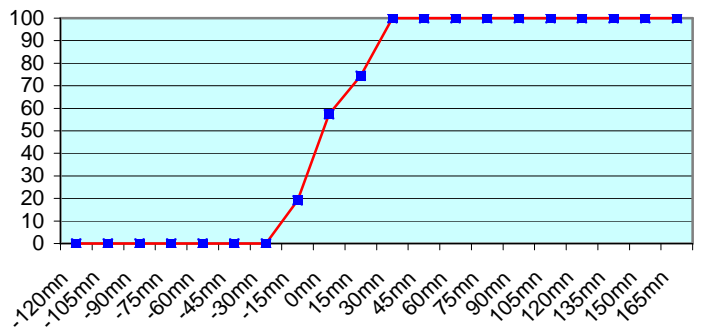
**ASEU02 (88 report parts) Offenbach 88**



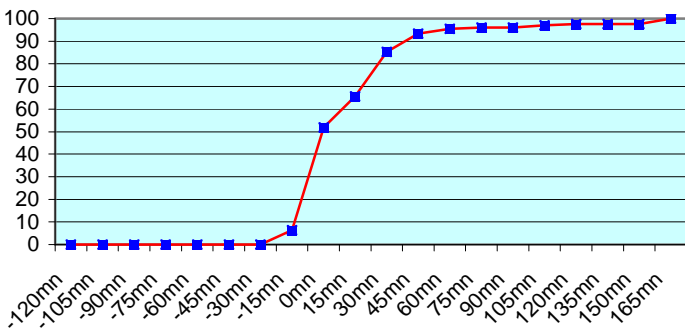
**ASEU03 (154 report parts) Offenbach 154**



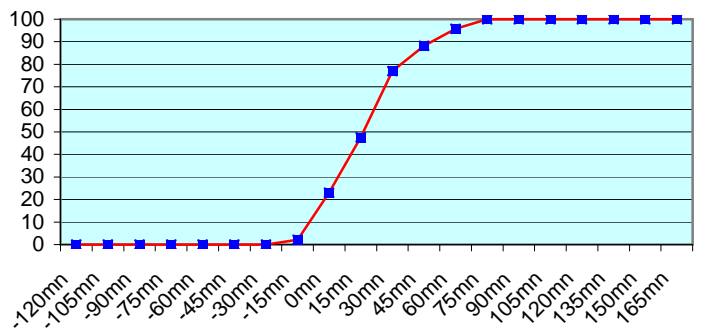
**ASEU04 (47 report parts) Offenbach 47**



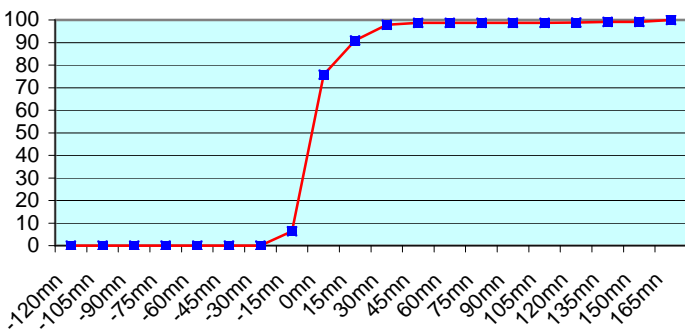
**ASEU05 (379 report parts) Offenbach 379**



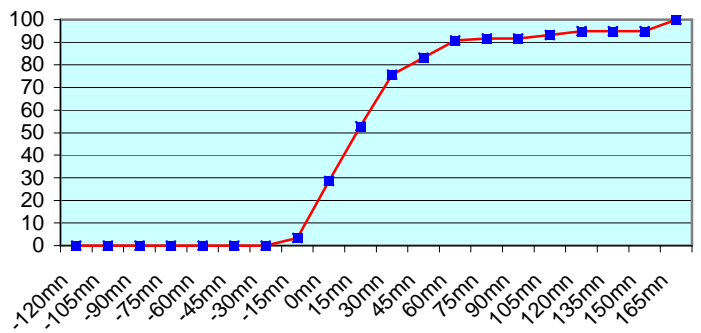
**ASDE01 (374 report parts) Offenbach 374**



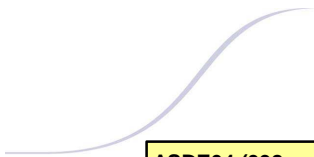
**ASDE02 (466 report parts) Offenbach 466**



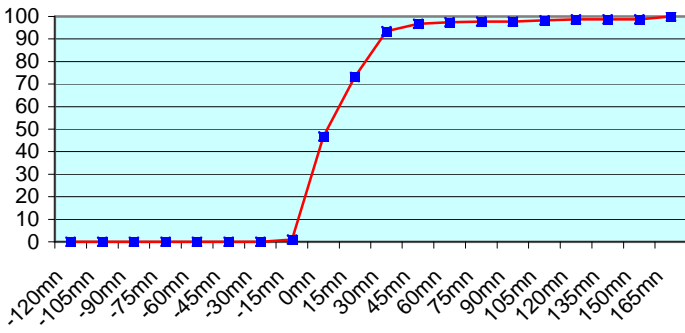
**ASDE03 (238 report parts) Offenbach 238**



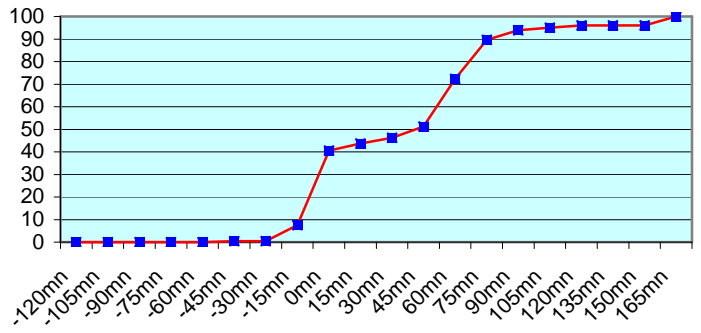




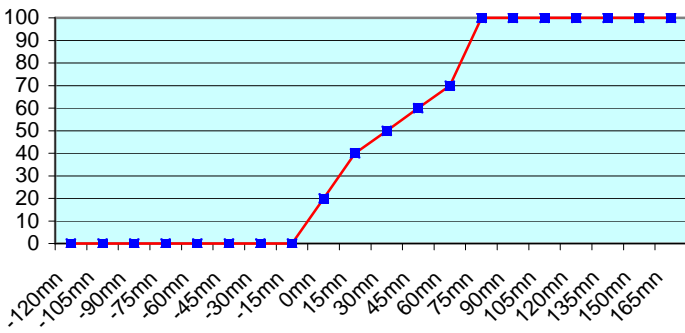
**ASDE04 (398 report parts) Offenbach 398**



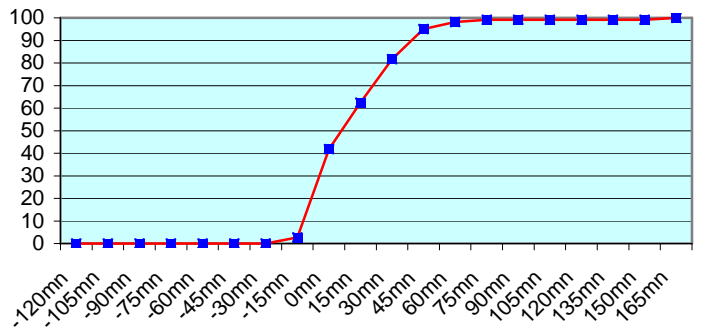
**DBLK (558 report parts) Offenbach 558**



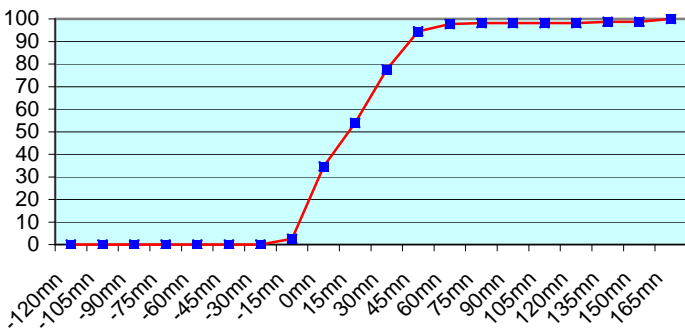
**ASGB01 (20 report parts) Offenbach 20**



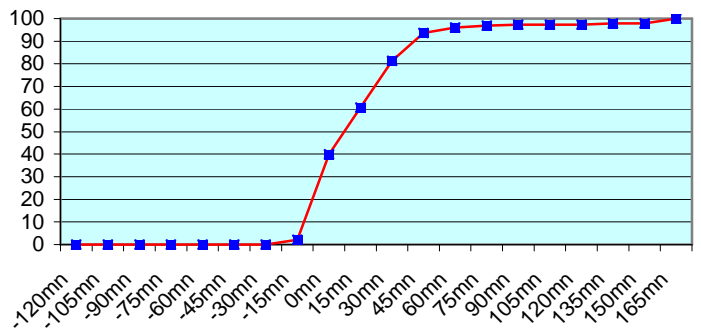
**ASDK01 (378 report parts) Offenbach 378**



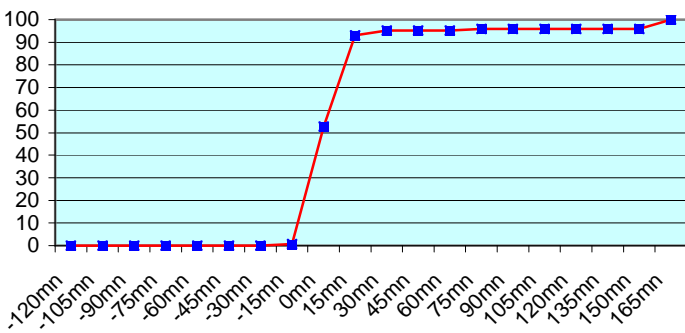
**ASDK02 (384 report parts) Offenbach 384**



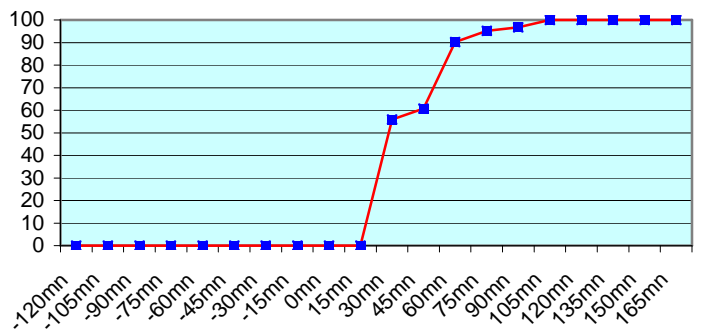
**ASDK3 (379 report parts) Offenbach 379**



**ASES01 (288 report parts) Offenbach 288**

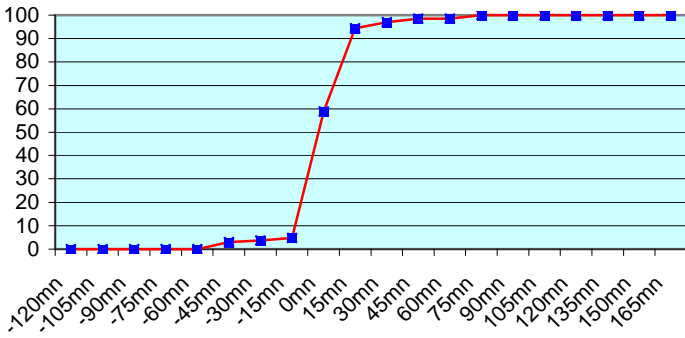


**ASFR1 (247 report parts) Email 247**

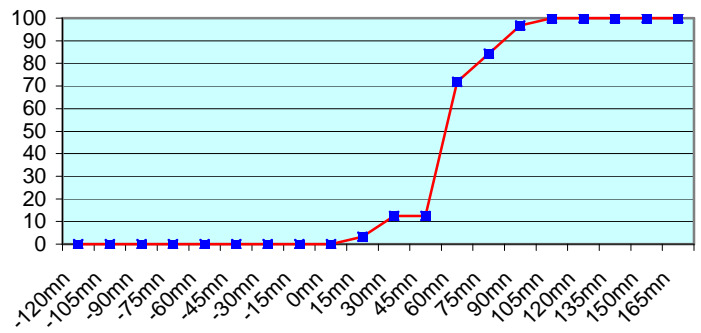




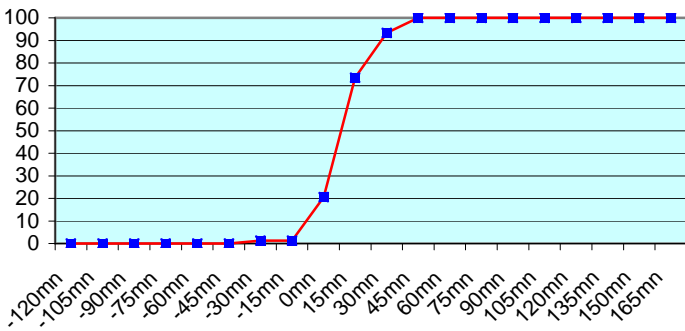
**ASFR2 (270 report parts) Email 266 with supervision 4**



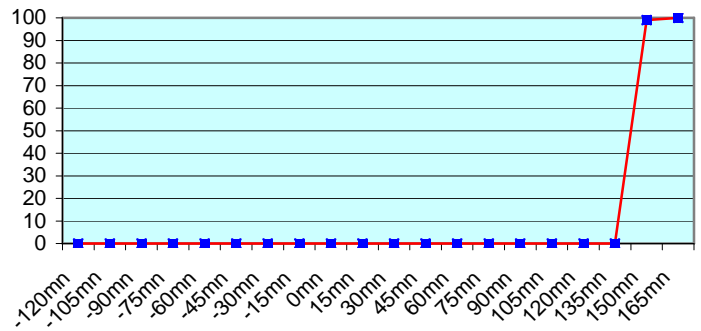
**ASFR3 (121 report parts) Email 121**



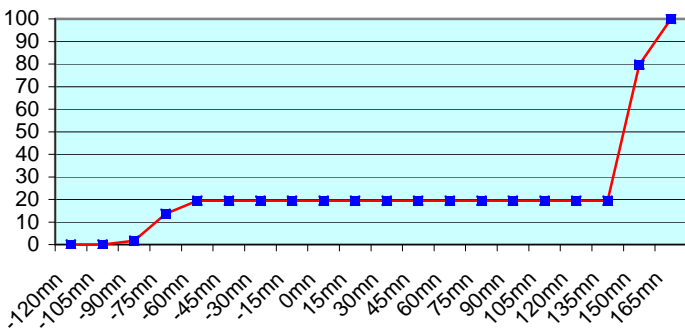
**ASFR4 (302 report parts) Email 302**



**JGQH (378 report parts) Exeter 378**



**JNSR (118 report parts) Exeter 118**



DBLK (German Research Vessel) transmitted some messages with delay but we have no information about the sounding operations on board (launch time...)  
No particular problem was noticed concerning the other European ships.

Japanese ships follow a different procedure with an important shift between the sending of the message and the synoptic hour. So, no graphic was displayed about Exeter.

For any comment or remark please contact Météo-France Toulouse DSO/DOA department

Gérard Rey ([gerard.rey@meteo.fr](mailto:gerard.rey@meteo.fr))

Daniel Bouchara ([daniel.bouchara@meteo.fr](mailto:daniel.bouchara@meteo.fr))

Hugues Jardat ([hugues.jardat@meteo.fr](mailto:hugues.jardat@meteo.fr))