

Joint WMO/IOC Technical Commission for  
Oceanography - Ship Observation Team

# **End-to-end report of the ASAP data dissemination performance**

## **April to June 2011**

## 1. Introduction

Météo-France is in charge of a end-to-end report of the ASAP data dissemination performance.

The matter of this paper is to evaluate the results of the three last months (April 2011 – June 2011).

## 2. Information available at Météo-France

TEMP-SHIP messages are received at LFPW (Toulouse) from EGRR (Exeter), EDZW (Offenbach) and Email.

The following information is available :

Reception at LFPW	Broadcast by LFPW
Call sign	Call sign
Header	Channel
Channel	Broadcast date
Reception date	Time lapse
Size	Broadcast size
Format	Recipient
Error	
Operator	

### 3. List of call signs available

<b>Country</b>	<b>Call sign</b>	<b>Country</b>	<b>Call sign</b>
Denmark	ASDK01	Japan	JCCX
	ASDK02		JGQH
	ASDK3		JIVB
E-ASAP	ASEU01		JDWX
	ASEU02		JNSR
	ASEU03	South Africa	ZSAF
	ASEU04	Spain	ASES01
	ASEU05	United Kingdom	ASGB01
France	ASFR1	USA	WTEC
	ASFR2		
	ASFR3		
	ASFR4		
Germany	ASDE01		
	ASDE02		
	ASDE03		
	ASDE04	Test	SHIP
	DBLK		ASDE09

#### 4. Origin of the messages

Call sign	Offenbach	Exeter	Telex	Email	Mariner	Supervis	X25
ASEU01	204	0	0	0	0	0	0
ASEU02	54	0	0	0	0	0	0
ASEU03	194	0	0	0	0	0	0
ASEU04	162	0	0	0	0	0	0
ASEU05	136	0	0	0	0	0	0
ASDE01	406	0	0	0	0	0	0
ASDE02	242	0	0	0	0	0	0
ASDE03	259	0	0	0	0	0	0
ASDE04	320	0	0	0	0	0	0
DBLK	224	0	0	0	0	0	0
ASGB01	64	0	0	0	0	0	0
ASDK01	384	0	0	0	0	0	0
ASDK02	451	0	0	0	0	0	0
ASDK3	371	0	0	0	0	0	0
ASES01	200	0	0	0	0	0	0
ASFR1	0	0	0	331	0	1	0
ASFR2	0	0	0	270	0	0	0
ASFR3	0	0	0	244	0	0	0
ASFR4	0	0	0	263	0	0	0
JGQH	0	182	0	0	0	0	0
JNSR	0	24	0	0	0	0	0
Test							
ASDE09	38	0	0	0	0	0	0
Wrong or strange call sign							
XXXXX	168	371	0	82	0	0	0
numer.	11	0	0	1	0	0	0

Mariner: French navy military sounding  
 Supervis: handled by operator

## 5. Global system performance

Month	Origin	Nb of messages received	Nb of messages in error	Percentage of messages in error	Nb of messages with operator action	Percentage of messages with operator action
2011-Apr	Offenbach	1302	0	0		
	Exeter	264	0	0		
	Telex	0	not relevant	not relevant		
	Email	381	not relevant	not relevant		
	Mariner	0	not relevant	not relevant		
	X25	0	not relevant	not relevant		
	Supervis	1	0	0		
	Total	1566	0	0	1	0,06
2011-May	Offenbach	1321	8	0,61		
	Exeter	177	0	0		
	Telex	0	not relevant	not relevant		
	Email	392	not relevant	not relevant		
	Mariner	0	not relevant	not relevant		
	X25	0	not relevant	not relevant		
	Supervis	0	0	not relevant		
	Total	1498	8	0,53	0	0
2011-Jun	Offenbach	1265	0	0		
	Exeter	136	0	0		
	Telex	0	not relevant	not relevant		
	Email	418	not relevant	not relevant		
	Mariner	0	not relevant	not relevant		
	X25	0	not relevant	not relevant		
	Supervis	0	0	not relevant		
	Total	1401	0	0	0	0
Total	Offenbach	3888	8	0,21		
	Exeter	577	0	0		
	Telex	0	0	not relevant		
	Email	1191	867	72,8		
	Mariner	0	not relevant	not relevant		
	X25	0	not relevant	not relevant		
	Supervis	1	0	0		
	Total	5657	8	0,18	1	0,02

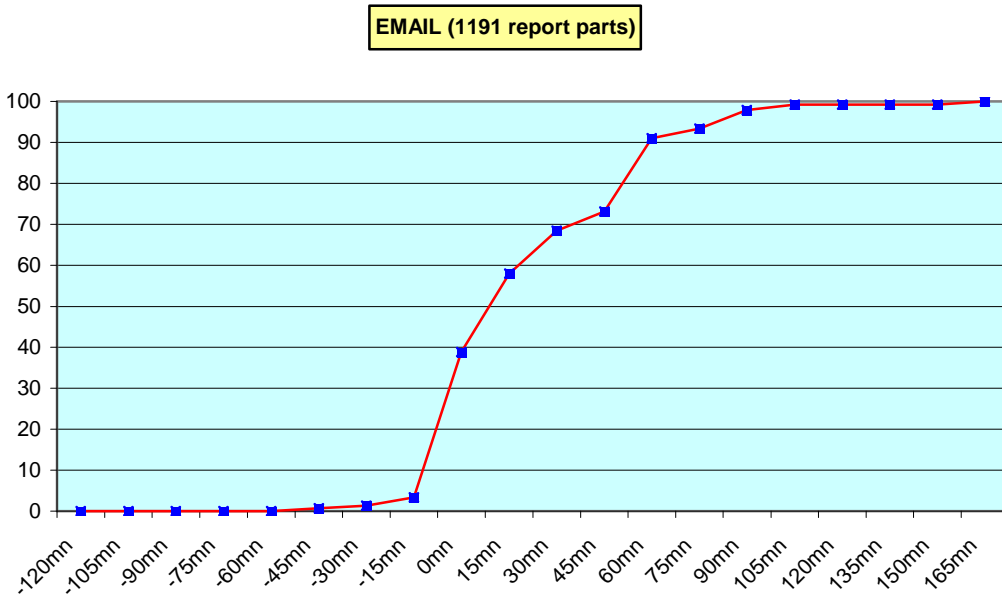
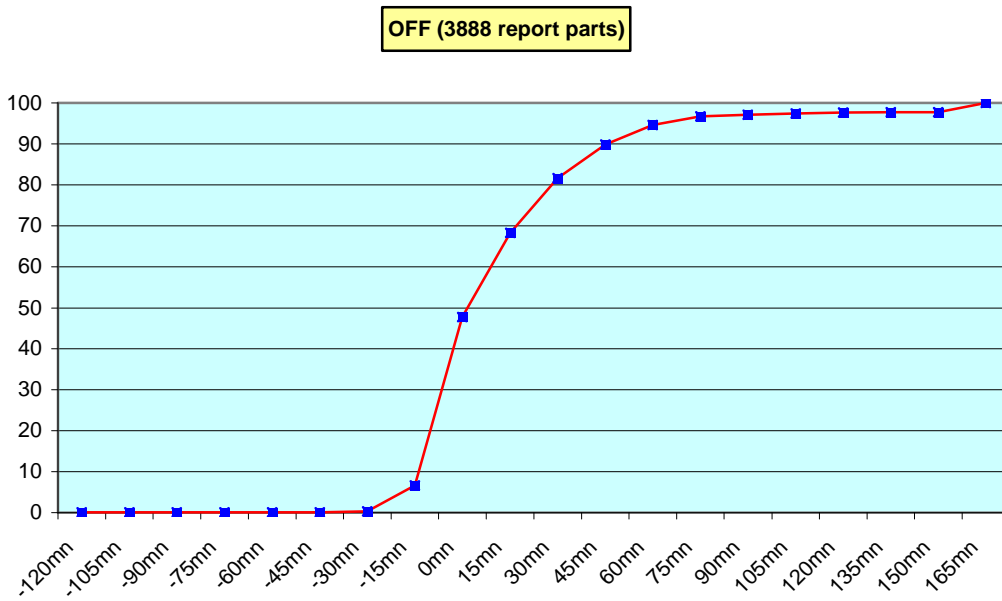
**Remark:** Email messages were excluded from the number of messages in error and from the relative percentage as values are regarded as not relevant. Not relevant percentages are due to not relevant values or to a total amount of data equal to zero.

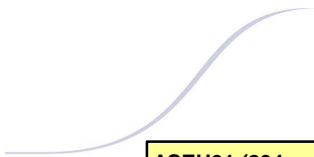
## 6. Global result of the syntactic check for the messages for each call sign.

Call sign	Nb of messages received	Nb of messages in error	Percentage of messages in error	Nb of messages with operator action	Percentage of messages with operator action
ASEU01	204	0	0	0	0
ASEU02	54	0	0	0	0
ASEU03	194	0	0	0	0
ASEU04	162	0	0	0	0
ASEU05	136	0	0	0	0
ASDE01	406	0	0	0	0
ASDE02	242	0	0	0	0
ASDE03	259	0	0	0	0
ASDE04	320	0	0	0	0
DBLK	224	0	0	0	0
ASGB01	64	0	0	0	0
ASDK01	384	0	0	0	0
ASDK02	451	0	0	0	0
ASDK3	371	0	0	0	0
ASES01	200	8	4	0	0
ASFR1	332	0	0	1	0,3
ASFR2	270	0	0	0	0
ASFR3	244	0	0	0	0
ASFR4	263	0	0	0	0
JGQH	182	0	0	0	0
JNSR	24	0	0	0	0
Test					
ASDE09	38	0	0	0	0
Wrong or strange call sign					
XXXXX	621	0	0	0	0
numer.	12	0	0	0	0

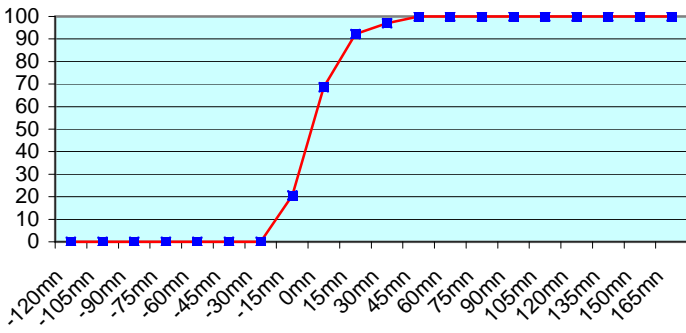
**Remark:** Data transmitted through email displayed an error rate close to 100% due to email syntax and were thus regarded as not relevant and excluded from errors total amount.

7. Mean time before the integration of the messages in the GTS in Toulouse. HH is the synoptic hour of reference.

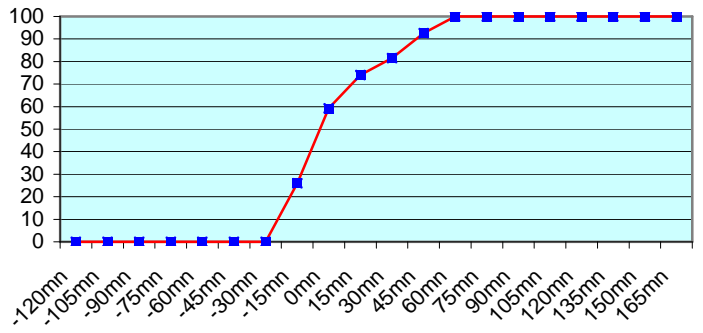




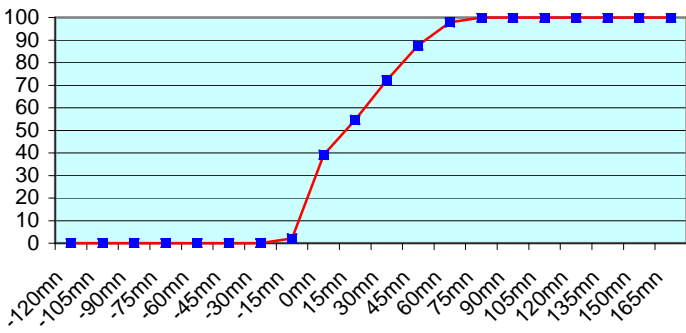
**ASEU01 (204 report parts) Offenbach 204**



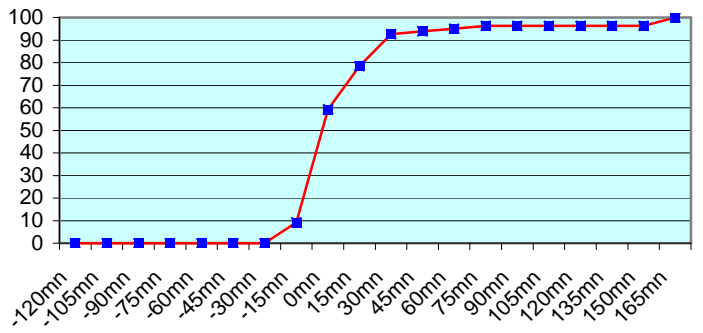
**ASEU02 (54 report parts) Offenbach 54**



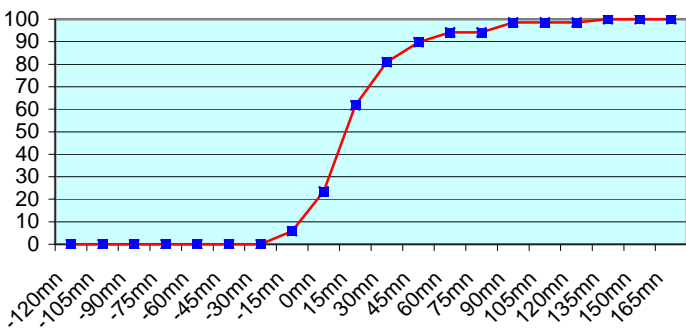
**ASEU03 (194 report parts) Offenbach 194**



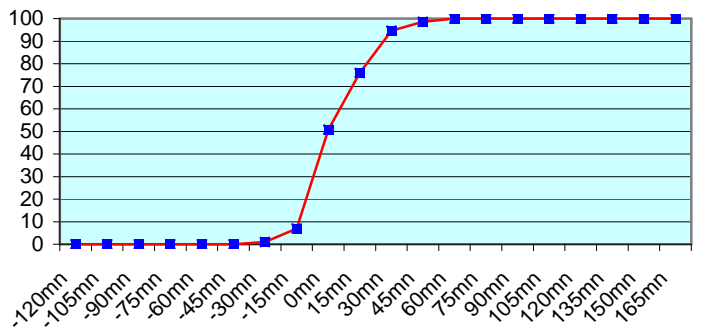
**ASEU04 (162 report parts) Offenbach 162**



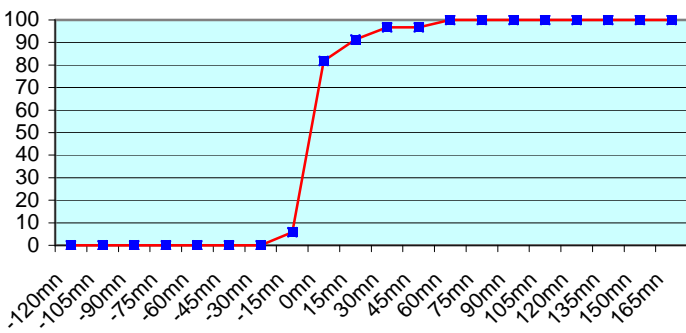
**ASEU05 (136 report parts) Offenbach 136**



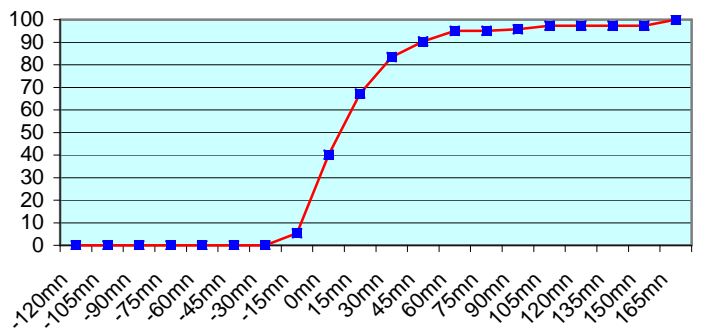
**ASDE01 (406 report parts) Offenbach 406**



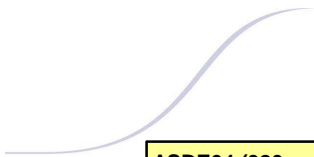
**ASDE02 (242 report parts) Offenbach 242**



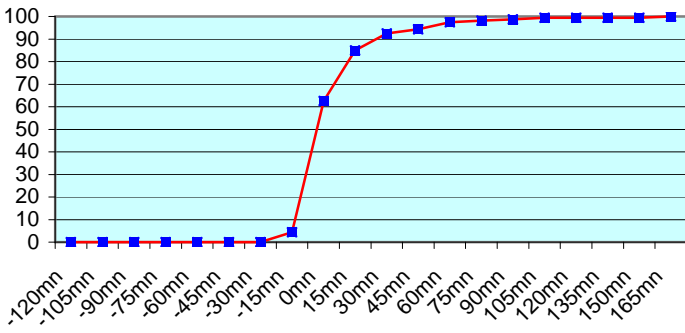
**ASDE03 (259 report parts) Offenbach 259**



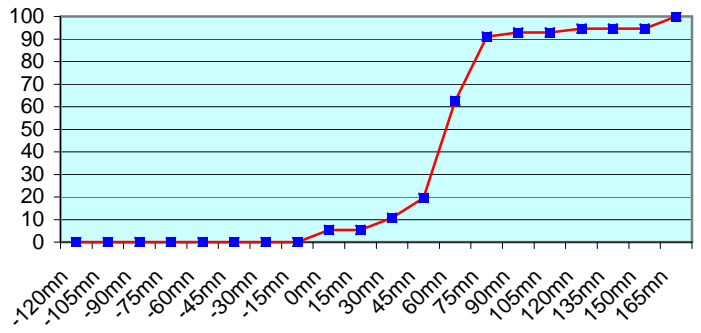




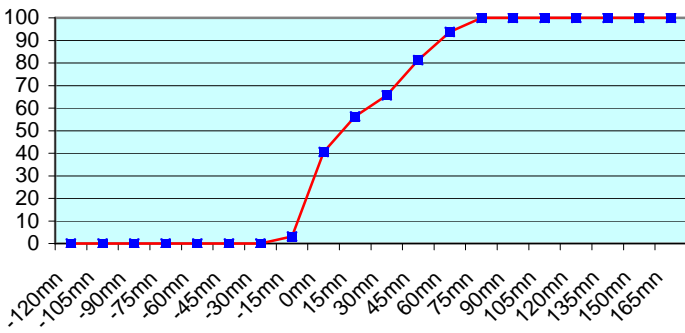
**ASDE04 (320 report parts) Offenbach 320**



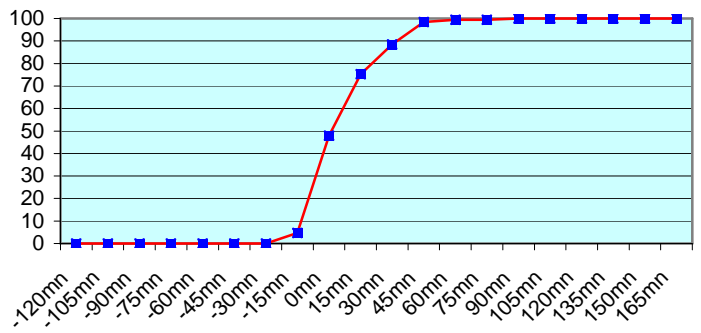
**DBLK (224 report parts) Offenbach 224**



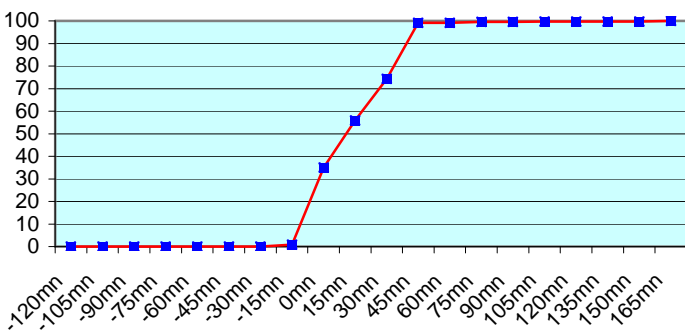
**ASGB01 (64 report parts) Offenbach 64**



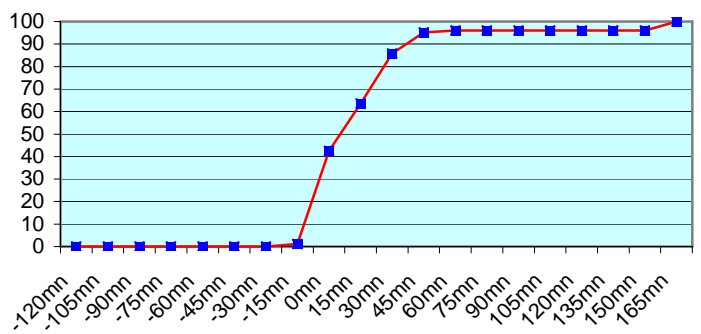
**ASDK01 (384 report parts) Offenbach 384**



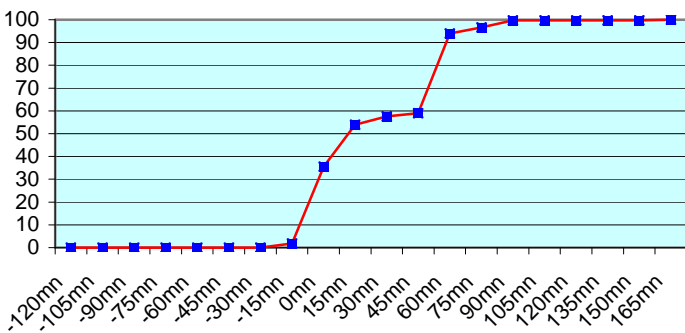
**ASDK02 (451 report parts) Offenbach 451**



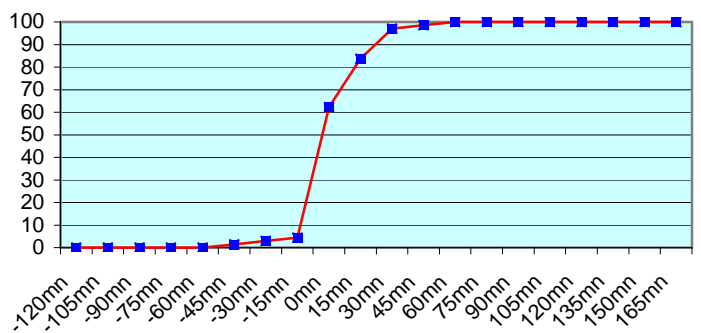
**ASDK3 (371 report parts) Offenbach 371**



**ASFR1 (332 report parts) Email 331 with supervision 1**

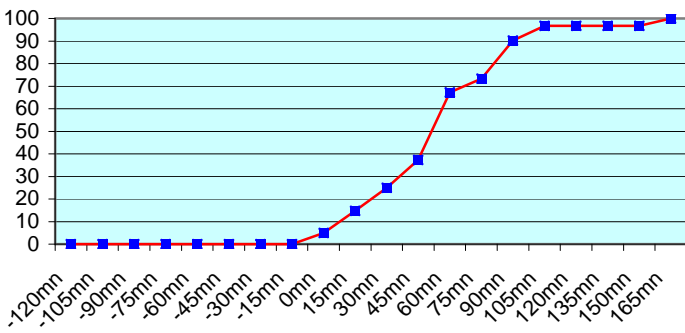


**ASFR2 (270 report parts) Email 270**

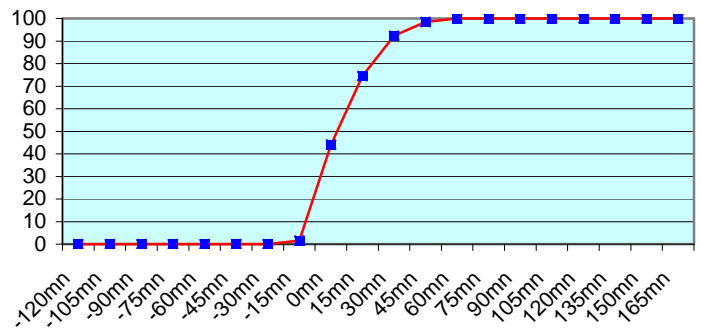




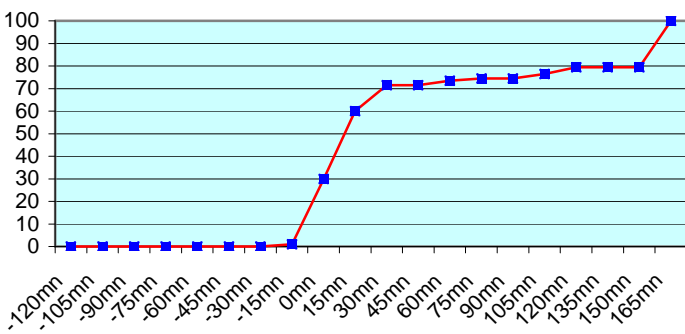
**ASFR3 (244 report parts) Email 244**



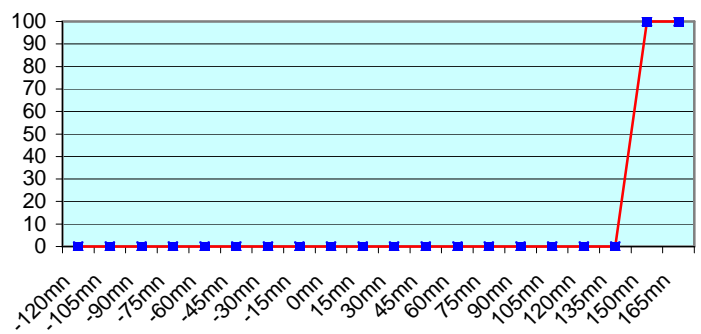
**ASFR4 (263 report parts) Email 263**



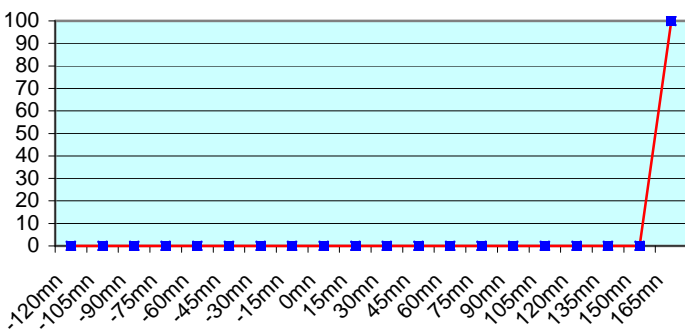
**ASES01 (200 report parts) Offenbach 200**



**JGQH (182 report parts) Exeter 182**



**JNSR (24 report parts) Exeter 24**



The obvious steps-like glance of the curve of ASFR1 and ASFR3 messages is the result of the change of the transmission protocol during the last quarter. In fact, the previous Inmarsat transmission system, with used real time transmission protocol has been replaced with Iridium which protocol implies a transmission at pre-determined hours. This results into the two steps-like curve, for the fixed transmission hours of the 12:00 sounding are 13:00 and 13:30 and those of the 00:00 one are 01:00 and 01:30. Météo France is now regarding a third 30' transmission latency at 00:30 and 12:30 in order to minimize the overall delay.

Japanese ships follow a different procedure with an important shift between the sending of the message and the synoptic hour. So, no graphic was displayed about Exeter.

For any comment or remark please contact Météo-France Toulouse DSO/DOA department

Gérard Rey ([gerard.rey@meteo.fr](mailto:gerard.rey@meteo.fr))

Daniel Bouchara ([daniel.bouchara@meteo.fr](mailto:daniel.bouchara@meteo.fr))

Hugues Jardat ([hugues.jardat@meteo.fr](mailto:hugues.jardat@meteo.fr))