

Joint WMO/IOC Technical Commission for  
Oceanography - Ship Observation Team

# **End-to-end report of the ASAP data dissemination performance**

## **January to March 2011**

## 1. Introduction

Météo-France is in charge of a end-to-end report of the ASAP data dissemination performance.

The matter of this paper is to evaluate the results of the three last months (January 2011 – March 2011).

## 2. Information available at Météo-France

TEMP-SHIP messages are received at LFPW (Toulouse) from EGRR (Exeter), EDZW (Offenbach) and Email.

The following information is available :

Reception at LFPW	Broadcast by LFPW
Call sign	Call sign
Header	Channel
Channel	Broadcast date
Reception date	Time lapse
Size	Broadcast size
Format	Recipient
Error	
Operator	

### 3. List of call signs available

<b>Country</b>	<b>Call sign</b>	<b>Country</b>	<b>Call sign</b>
Denmark	ASDK01	Japan	JCCX
	ASDK02		JGQH
	ASDK3		JIVB
E-ASAP	ASEU01		JDWX
	ASEU02		JNSR
	ASEU03	South Africa	ZSAF
	ASEU04	Spain	ASES01
	ASEU05	United Kingdom	ASGB01
France	ASFR1	USA	WTEC
	ASFR2		
	ASFR3		
	ASFR4		
Germany	ASDE01		
	ASDE02		
	ASDE03		
	ASDE04	Test	SHIP
	DBLK		ASDE09

#### 4. Origin of the messages

Call sign	Offenbach	Exeter	Telex	Email	Mariner	Supervis	X25
ASEU01	204	0	0	0	0	0	0
ASEU02	229	0	0	0	0	0	0
ASEU03	172	0	0	0	0	0	0
ASEU04	216	0	0	0	0	0	0
ASEU05	116	0	0	0	0	0	0
ASDE01	348	0	0	0	0	0	0
ASDE02	377	0	0	0	0	0	0
ASDE03	218	0	0	0	0	0	0
ASDE04	274	0	0	0	0	0	0
DBLK	506	0	0	0	0	0	0
ASGB01	214	0	0	0	0	0	0
ASDK01	305	0	0	0	0	0	0
ASDK02	283	0	0	0	0	0	0
ASDK3	312	0	0	0	0	0	0
ASES01	246	0	0	0	0	0	0
ASFR1	0	0	0	138	0	0	0
ASFR2	0	0	0	254	0	0	0
ASFR3	0	0	0	261	0	6	0
ASFR4	0	0	0	220	0	4	0
JGQH	0	290	0	0	0	0	0
Test							
ASDE09	18	0	0	0	0	0	0
Wrong or strange call sign							
XXXXX	282	720	0	64	0	1	0
numer.	4	0	0	1	0	2	0

Mariner: French navy military sounding  
 Supervis: handled by operator

## 5. Global system performance

Month	Origin	Nb of messages received	Nb of messages in error	Percentage of messages in error	Nb of messages with operator action	Percentage of messages with operator action
2011-Jan	Offenbach	1577	0	0		
	Exeter	365	0	0		
	Telex	0	not relevant	not relevant		
	Email	322	not relevant	not relevant		
	Mariner	0	not relevant	not relevant		
	X25	0	not relevant	not relevant		
	Supervis	0	0	not relevant		
	Total	1942	0	0	0	0
2011-Feb	Offenbach	1189	0	0		
	Exeter	355	0	0		
	Telex	0	not relevant	not relevant		
	Email	283	not relevant	not relevant		
	Mariner	0	not relevant	not relevant		
	X25	0	not relevant	not relevant		
	Supervis	0	0	not relevant		
	Total	1544	0	0	0	0
2011-Mar	Offenbach	1558	0	0		
	Exeter	290	0	0		
	Telex	0	not relevant	not relevant		
	Email	333	not relevant	not relevant		
	Mariner	0	not relevant	not relevant		
	X25	0	not relevant	not relevant		
	Supervis	13	1	7,69		
	Total	1848	0	0	13	0,7
Total	Offenbach	4324	0	0		
	Exeter	1010	0	0		
	Telex	0	0	not relevant		
	Email	938	938	100		
	Mariner	0	not relevant	not relevant		
	X25	0	not relevant	not relevant		
	Supervis	13	1	7,69		
	Total	6285	0	0	13	0,24

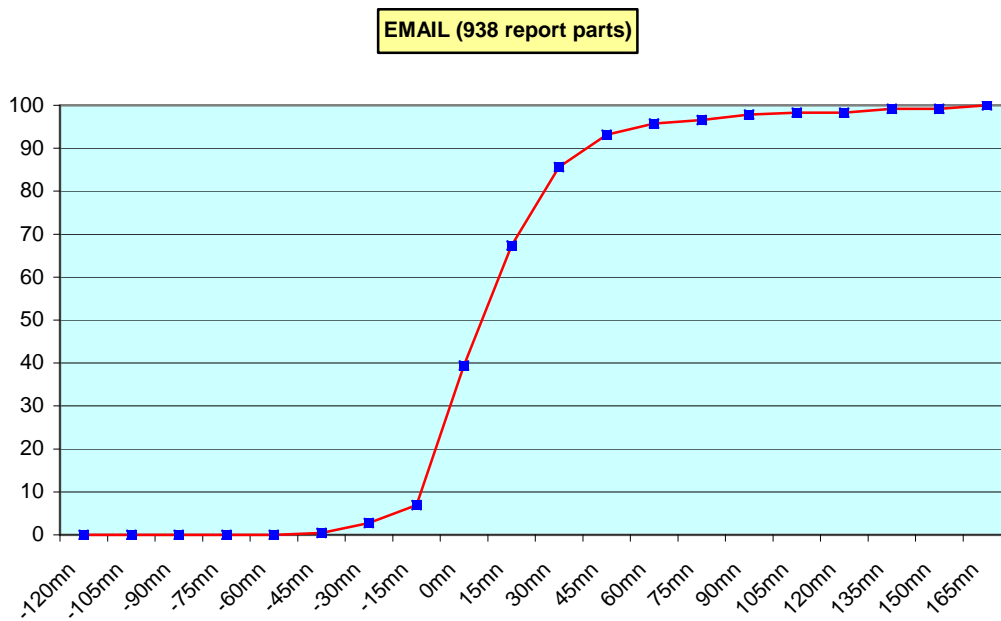
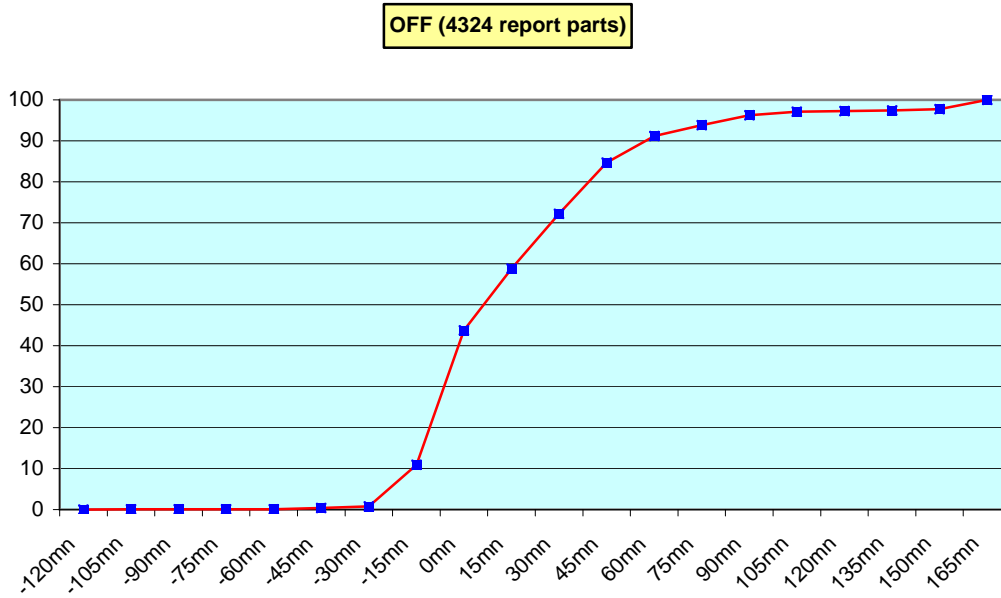
**Remark:** Email messages were excluded from the number of messages in error and from the relative percentage as values are regarded as not relevant. Not relevant percentages are due to not relevant values or to a total amount of data equal to zero.

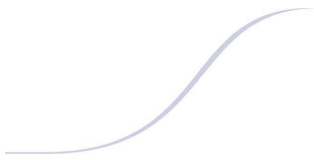
## 6. Global result of the syntactic check for the messages for each call sign.

Call sign	Nb of messages received	Nb of messages in error	Percentage of messages in error	Nb of messages with operator action	Percentage of messages with operator action
ASEU01	204	0	0	0	0
ASEU02	229	0	0	0	0
ASEU03	172	0	0	0	0
ASEU04	216	0	0	0	0
ASEU05	116	0	0	0	0
ASDE01	348	0	0	0	0
ASDE02	377	0	0	0	0
ASDE03	218	0	0	0	0
ASDE04	274	0	0	0	0
DBLK	506	0	0	0	0
ASGB01	214	0	0	0	0
ASDK01	305	0	0	0	0
ASDK02	283	0	0	0	0
ASDK3	312	0	0	0	0
ASES01	246	0	0	0	0
ASFR1	138	0	0	0	0
ASFR2	254	0	0	0	0
ASFR3	267	1	0,37	6	2,25
ASFR4	224	0	0	4	1,79
JGQH	290	0	0	0	0
Test					
ASDE09	18	0	0	0	0
Wrong or strange call sign					
XXXXX	1067	0	0	1	0,09
numer.	7	0	0	2	28,57

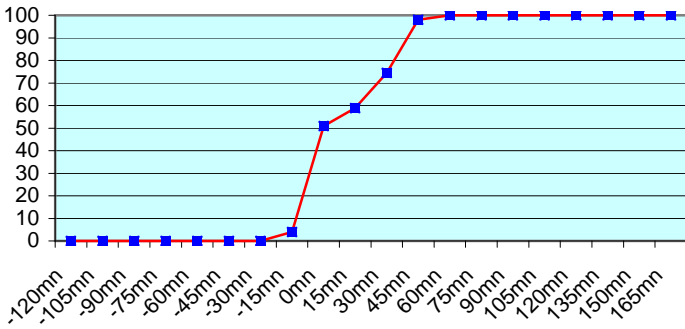
**Remark:** Data transmitted through email displayed an error rate close to 100% due to email syntax and were thus regarded as not relevant and excluded from errors total amount.

7. Mean time before the integration of the messages in the GTS in Toulouse. HH is the synoptic hour of reference.

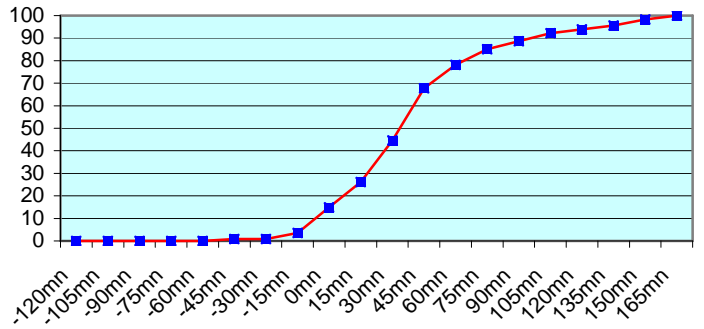




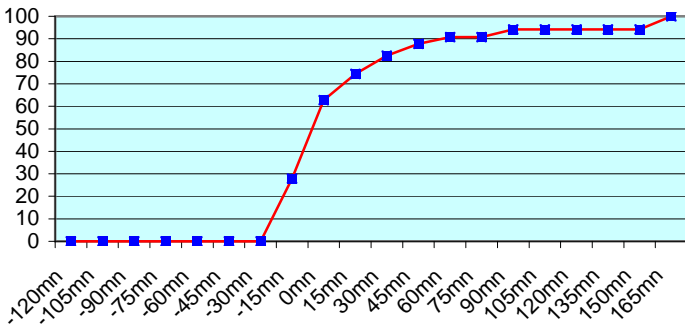
**ASEU01 (204 report parts) Offenbach 204**



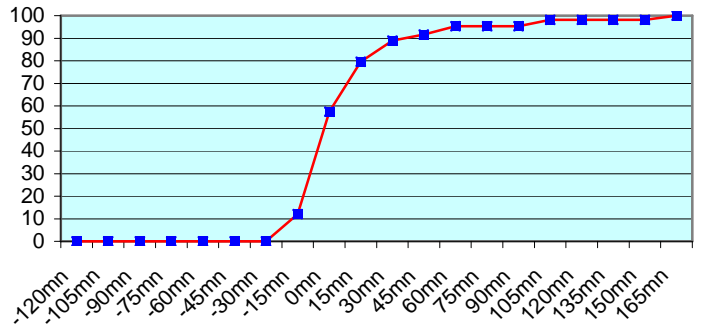
**ASEU02 (229 report parts) Offenbach 229**



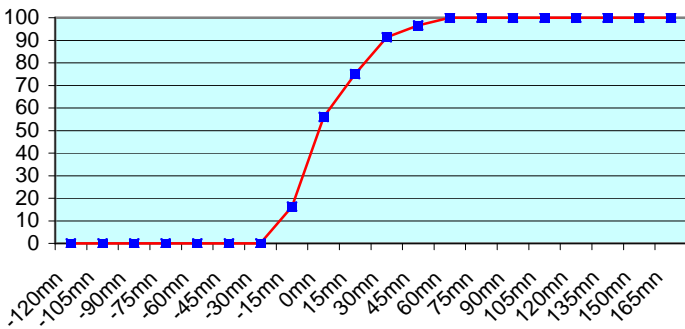
**ASEU03 (172 report parts) Offenbach 172**



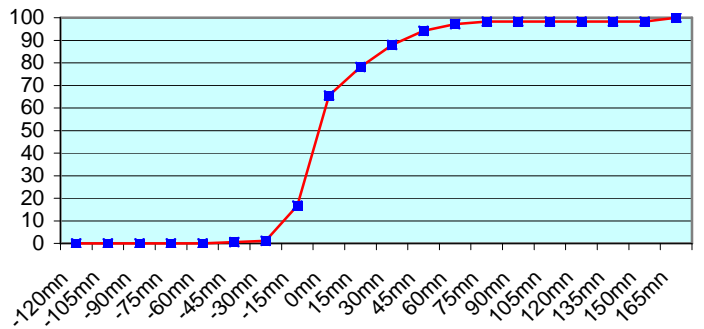
**ASEU04 (216 report parts) Offenbach 216**



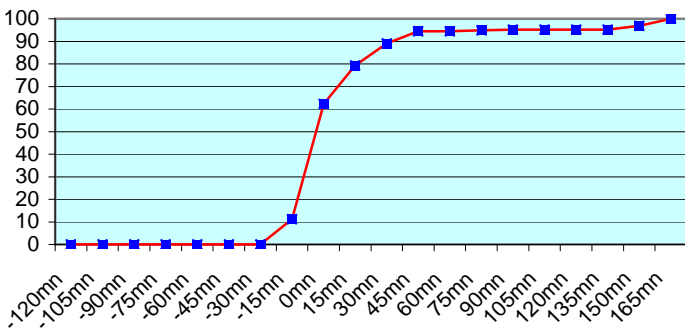
**ASEU05 (116 report parts) Offenbach 116**



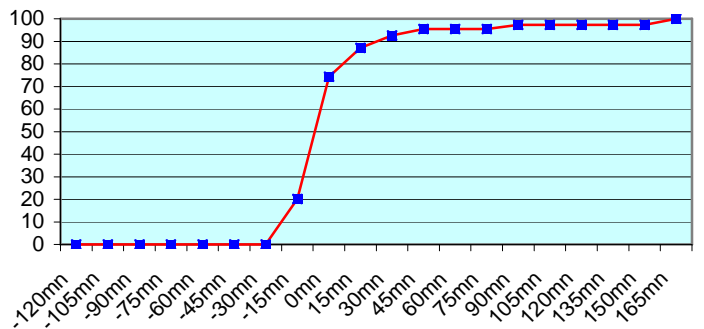
**ASDE01 (348 report parts) Offenbach 348**



**ASDE02 (377 report parts) Offenbach 377**



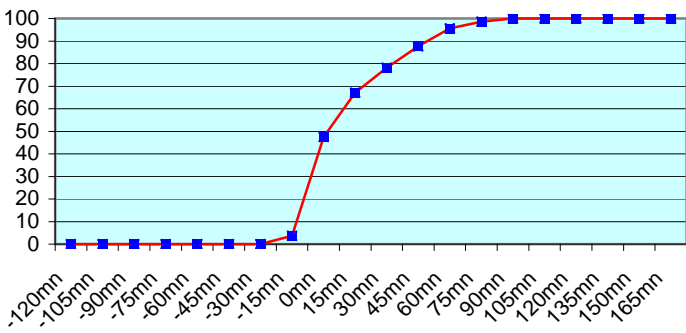
**ASDE03 (218 report parts) Offenbach 218**



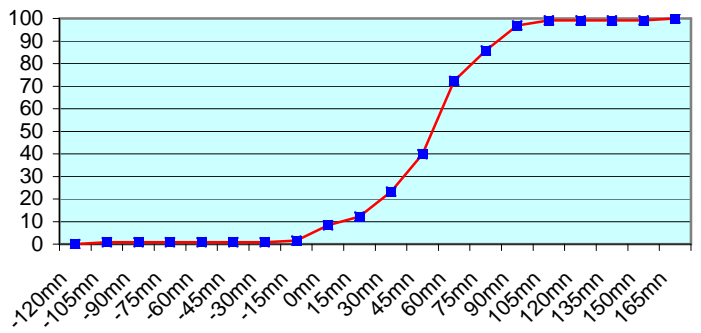




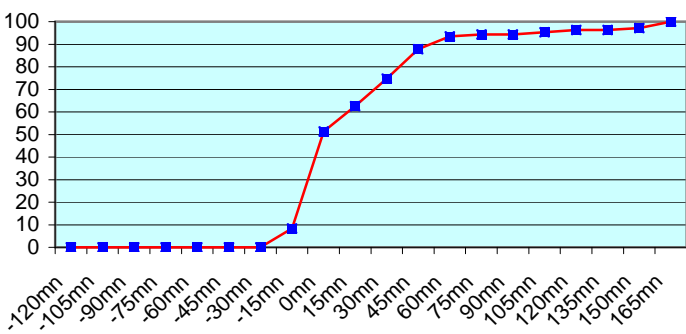
**ASDE04 (274 report parts) Offenbach 274**



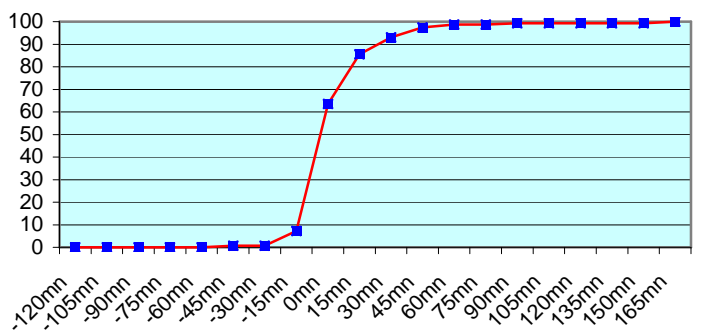
**DBLK (506 report parts) Offenbach 506**



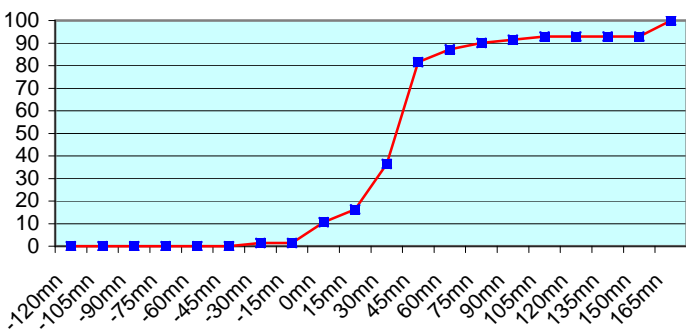
**ASGB01 (214 report parts) Offenbach 214**



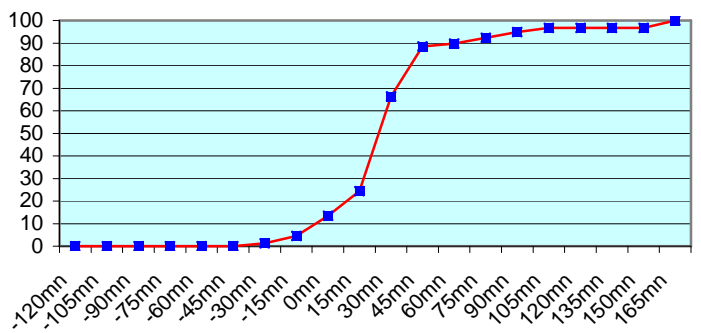
**ASDK01 (305 report parts) Offenbach 305**



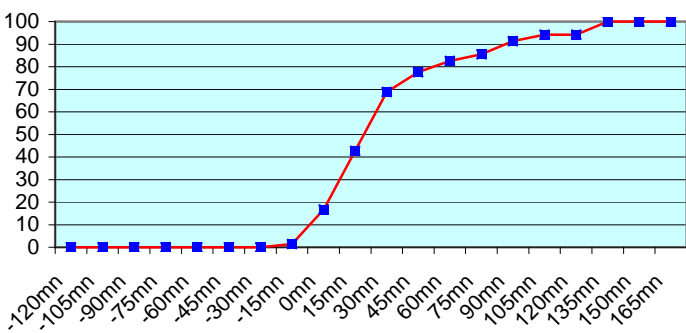
**ASDK02 (283 report parts) Offenbach 283**



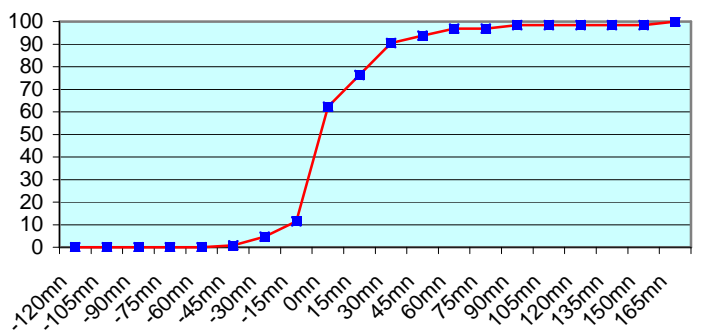
**ASDK3 (312 report parts) Offenbach 312**

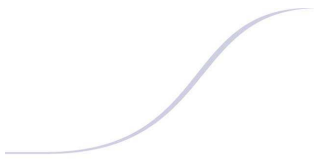


**ASFR1 (138 report parts) Email 138**

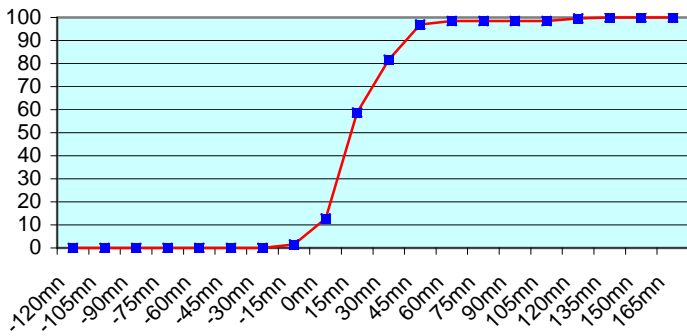


**ASFR2 (254 report parts) Email 254**

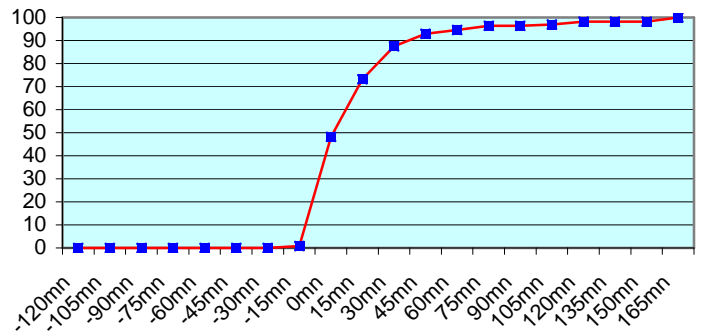




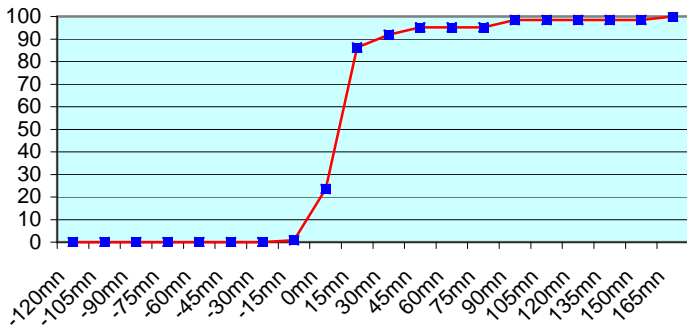
ASFR3 (267 report parts) Email 261 with supervision 6



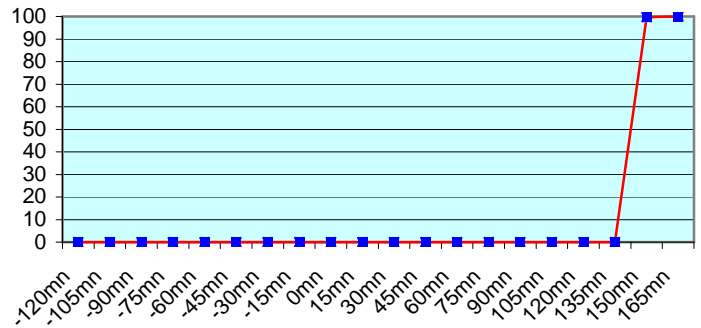
ASFR4 (224 report parts) Email 220 with supervision 4



ASES01 (246 report parts) Offenbach 246



JGQH (290 report parts) Exeter 290



Due to late launch time, ASEU02 and ASFR1 transmitted some messages with delay. No particular problem was noticed concerning the other European ships.

Japanese ships follow a different procedure with an important shift between the sending of the message and the synoptic hour. So, no graphic was displayed about Exeter.

For any comment or remark please contact Météo-France Toulouse DSO/DOA department

Gérard Rey ([gerard.rey@meteo.fr](mailto:gerard.rey@meteo.fr))

Daniel Bouchara ([daniel.bouchara@meteo.fr](mailto:daniel.bouchara@meteo.fr))

Hugues Jardat ([hugues.jardat@meteo.fr](mailto:hugues.jardat@meteo.fr))