

Joint WMO/IOC Technical Commission for
Oceanography - Ship Observation Team

**End-to-end report of the
ASAP data dissemination
performance
2011
January to December**

1. Introduction

Météo-France is in charge of a end-to-end report of the ASAP data dissemination performance.

The matter of this paper is to evaluate the results of the last year (January 2011 – December 2011).

2. Information available at Météo-France

TEMP-SHIP messages are received at LFPW (Toulouse) from EGRR (Exeter), EDZW (Offenbach) and Email.

The following information is available :

Reception at LFPW	Broadcast by LFPW
Call sign	Call sign
Header	Channel
Channel	Broadcast date
Reception date	Time lapse
Size	Broadcast size
Format	Recipient
Error	
Operator	

3. List of call signs available

Country	Call sign	Country	Call sign
Denmark	ASDK01	Japan	JNSR
	ASDK02		JGQH
	ASDK3		
E-ASAP	ASEU01		
	ASEU02		
	ASEU03		
	ASEU04		
	ASEU05	Spain	ASES01
	ASEU06		
France	ASFR1	United Kingdom	ASGB01
	ASFR2		
	ASFR3		
	ASFR4		
Germany	ASDE01		
	ASDE02		
	ASDE03		
	ASDE04	Test	SHIP
	DBLK		ASDE09
	DFCG		

4. Origin of the messages

Call sign	Offenbach	Exeter	Telex	Email	Mariner	Supervis	X25
ASEU01	688	0	0	0	0	0	0
ASEU02	493	0	0	0	0	0	0
ASEU03	610	0	0	0	0	0	0
ASEU04	519	0	0	0	0	0	0
ASEU05	889	0	0	0	0	0	0
ASEU06	170	0	0	0	0	0	0
ASDE01	1376	0	0	0	0	0	0
ASDE02	1249	0	0	0	0	0	0
ASDE03	937	0	0	0	0	0	0
ASDE04	1246	0	0	0	0	0	0
DBLK	1524	0	0	0	0	0	0
DFCG	76	0	0	0	0	0	0
ASGB01	298	0	0	0	0	0	0
ASDK01	1355	0	0	0	0	0	0
ASDK02	1350	0	0	0	0	0	0
ASDK3	1347	0	0	0	0	0	0
ASES01	1008	0	0	0	0	0	0
ASFR1	0	0	0	919	0	1	0
ASFR2	0	0	0	1022	0	8	0
ASFR3	0	0	0	735	0	6	0
ASFR4	0	0	0	1033	0	4	0
JGQH	0	894	0	0	0	0	0
JNSR	0	2025	0	0	0	0	0
Test							
ASDE09	148	0	0	0	0	0	0
Wrong or strange call sign							
XXXXX	872	1297	0	352	0	7	0
numer.	15	0	0	2	0	2	0

Mariner: French navy military sounding
 Supervis: handled by operator

5. Global system performance

Month	Origin	Nb of messages received	Nb of messages in error	Percentage of messages in error	Nb of messages with operator action	Percentage of messages with operator action
2011-Jan	Offenbach	1577	0	0		
	Exeter	365	0	0		
	Telex	0	not relevant	not relevant		
	Email	322	not relevant	not relevant		
	Mariner	0	not relevant	not relevant		
	X25	0	not relevant	not relevant		
	Supervis	0	0	not relevant		
	Total	1942	0	0	0	0
2011-Feb	Offenbach	1189	0	0		
	Exeter	355	0	0		
	Telex	0	not relevant	not relevant		
	Email	283	not relevant	not relevant		
	Mariner	0	not relevant	not relevant		
	X25	0	not relevant	not relevant		
	Supervis	0	0	not relevant		
	Total	1544	0	0	0	0
2011-Mar	Offenbach	1558	0	0		
	Exeter	290	0	0		
	Telex	0	not relevant	not relevant		
	Email	333	not relevant	not relevant		
	Mariner	0	not relevant	not relevant		
	X25	0	not relevant	not relevant		
	Supervis	13	1	7,69		
	Total	1848	0	0	13	0,7
2011-Apr	Offenbach	1302	0	0		
	Exeter	264	0	0		
	Telex	0	not relevant	not relevant		
	Email	381	not relevant	not relevant		
	Mariner	0	not relevant	not relevant		
	X25	0	not relevant	not relevant		
	Supervis	1	0	0		
	Total	1566	0	0	1	0,06
2011-May	Offenbach	1321	8	0,61		
	Exeter	177	0	0		
	Telex	0	not relevant	not relevant		
	Email	392	not relevant	not relevant		
	Mariner	0	not relevant	not relevant		
	X25	0	not relevant	not relevant		
	Supervis	0	0	not relevant		
	Total	1498	8	0,53	0	0
2011-Jun	Offenbach	1265	0	0		
	Exeter	136	0	0		
	Telex	0	not relevant	not relevant		
	Email	418	not relevant	not relevant		
	Mariner	0	not relevant	not relevant		
	X25	0	not relevant	not relevant		
	Supervis	0	0	not relevant		
	Total	1401	0	0	0	0

2011-Jul	Offenbach	1831	0	0		
	Exeter	200	0	0		
	Telex	0	not relevant	not relevant		
	Email	364	not relevant	not relevant		
	Mariner	0	not relevant	not relevant		
	X25	0	not relevant	not relevant		
	Supervis	4	0	0		
	Total	2031	0	0	4	0,2
2011-Aug	Offenbach	1581	0	0		
	Exeter	158	0	0		
	Telex	0	not relevant	not relevant		
	Email	272	not relevant	not relevant		
	Mariner	0	not relevant	not relevant		
	X25	0	not relevant	not relevant		
	Supervis	0	0	not relevant		
	Total	1739	0	0	0	0
2011-Sep	Offenbach	1179	0	0		
	Exeter	210	0	0		
	Telex	0	not relevant	not relevant		
	Email	419	not relevant	not relevant		
	Mariner	0	not relevant	not relevant		
	X25	0	not relevant	not relevant		
	Supervis	0	0	not relevant		
	Total	1389	0	0	0	0
2011-Oct	Offenbach	1046	0	0		
	Exeter	899	0	0		
	Telex	0	not relevant	not relevant		
	Email	312	not relevant	not relevant		
	Mariner	0	not relevant	not relevant		
	X25	0	not relevant	not relevant		
	Supervis	4	0	0		
	Total	1945	0	0	4	0,21
2011-Nov	Offenbach	1548	0	0		
	Exeter	1022	0	0		
	Telex	0	not relevant	not relevant		
	Email	326	not relevant	not relevant		
	Mariner	0	not relevant	not relevant		
	X25	0	not relevant	not relevant		
	Supervis	6	0	0		
	Total	2570	0	0	6	0,23
2011-Dec	Offenbach	773	0	0		
	Exeter	140	0	0		
	Telex	0	not relevant	not relevant		
	Email	241	not relevant	not relevant		
	Mariner	0	not relevant	not relevant		
	X25	0	not relevant	not relevant		
	Supervis	0	0	not relevant		
	Total	913	0	0	0	0
Total	Offenbach	16170	8	0,05		
	Exeter	4216	0	0		
	Telex	0	0	not relevant		
	Email	4063	2776	68,32		
	Mariner	0	not relevant	not relevant		
	X25	0	not relevant	not relevant		
	Supervis	28	1	3,57		
	Total	24477	8	0,04	28	0,14

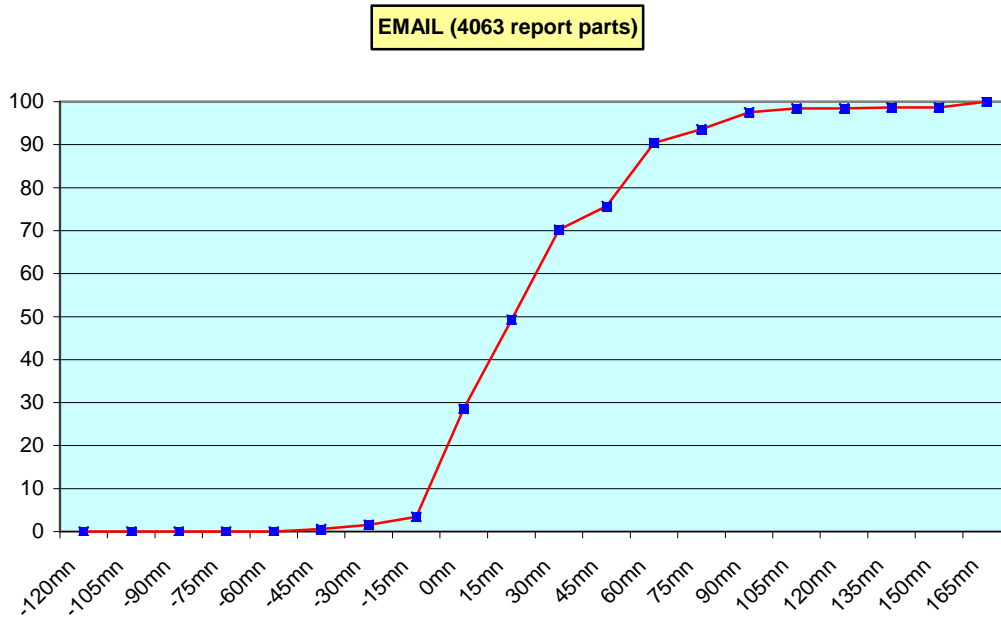
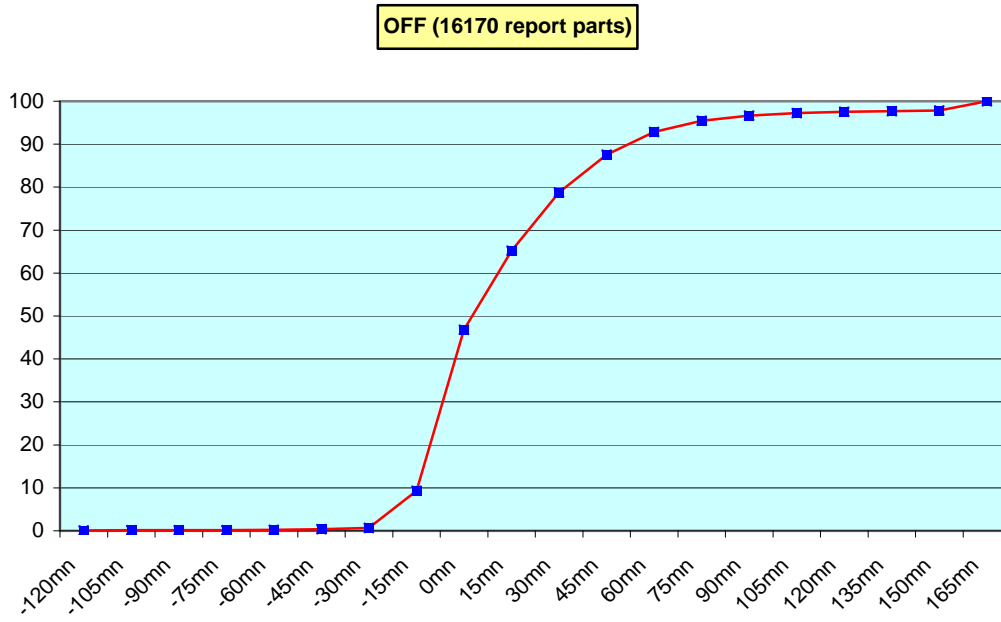
Remark: Email messages were excluded from the number of messages in error and from the relative percentage as values are regarded as not relevant. Not relevant percentages are due to not relevant values or to a total amount of data equal to zero.

6. Global result of the syntactic check for the messages for each call sign.

Call sign	Nb of messages received	Nb of messages in error	Percentage of messages in error	Nb of messages with operator action	Percentage of messages with operator action
ASEU01	688	0	0	0	0
ASEU02	493	0	0	0	0
ASEU03	610	0	0	0	0
ASEU04	519	0	0	0	0
ASEU05	889	0	0	0	0
ASEU06	170	0	0	0	0
ASDE01	1376	0	0	0	0
ASDE02	1249	0	0	0	0
ASDE03	937	0	0	0	0
ASDE04	1246	0	0	0	0
DBLK	1524	0	0	0	0
DFCG	76	0	0	0	0
ASGB01	298	0	0	0	0
ASDK01	1355	0	0	0	0
ASDK02	1350	0	0	0	0
ASDK3	1347	0	0	0	0
ASES01	1008	8	0,79	0	0
ASFR1	920	0	0	1	0,11
ASFR2	1030	0	0	8	0,78
ASFR3	741	1	0,13	6	0,81
ASFR4	1037	0	0	4	0,39
JGQH	894	0	0	0	0
JNSR	2025	0	0	0	0
Test					
ASDE09	148	0	0	0	0
Wrong or strange call sign					
XXXXX	2528	0	0	7	0,28
numer,	19	0	0	2	10,53

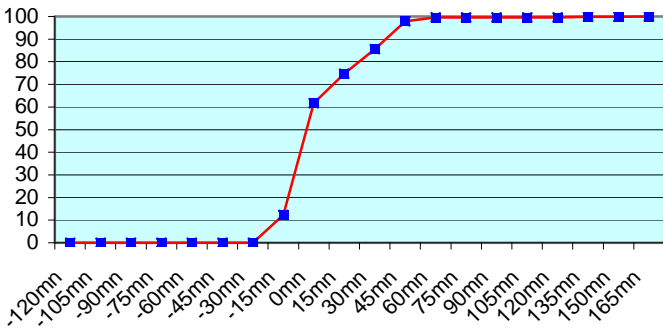
Remark: Data transmitted through email displayed an error rate close to 100% due to email syntax and were thus regarded as not relevant and excluded from errors total amount.

7. Mean time before the integration of the messages in the GTS in Toulouse. HH is the synoptic hour of reference.

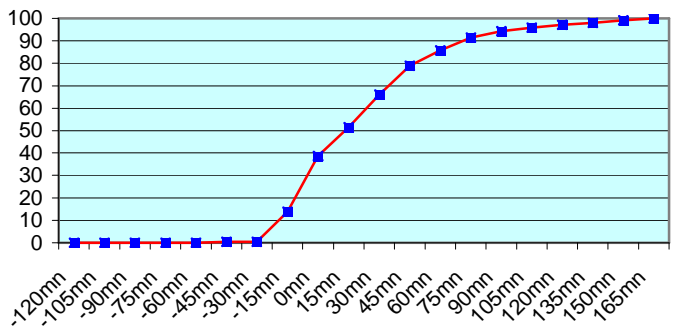




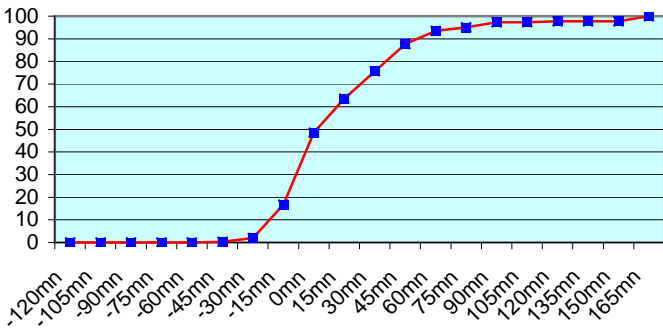
ASEU01 (688 report parts) Offenbach 688



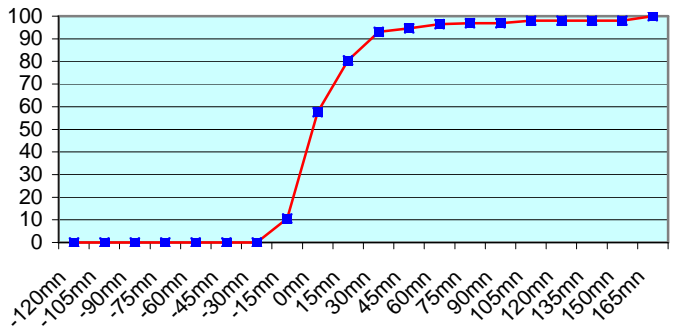
ASEU02 (493 report parts) Offenbach 493



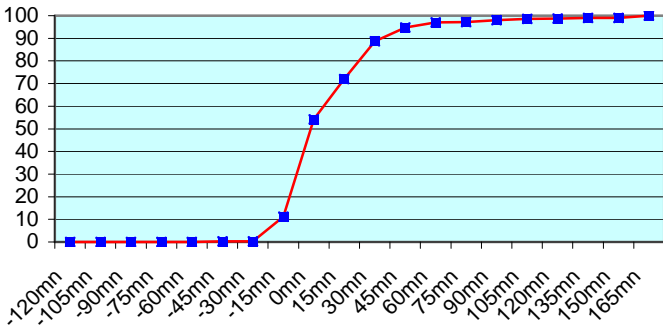
ASEU03 (610 report parts) Offenbach 610



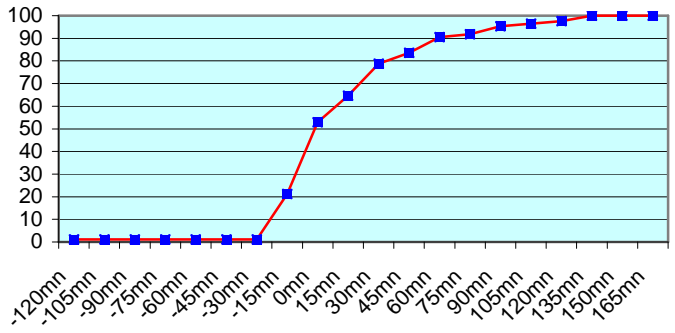
ASEU04 (519 report parts) Offenbach 519



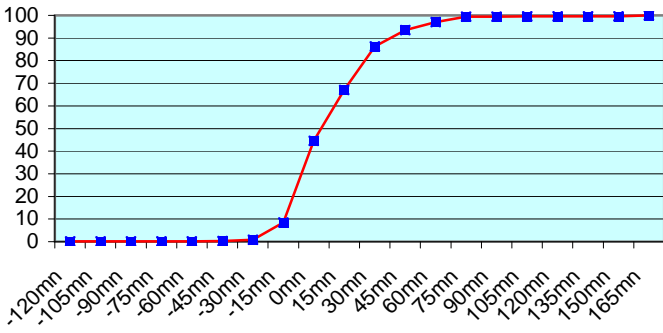
ASEU05 (889 report parts) Offenbach 889



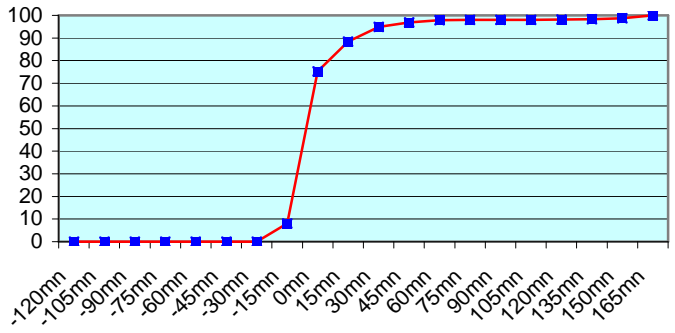
ASEU06 (170 report parts) Offenbach 170

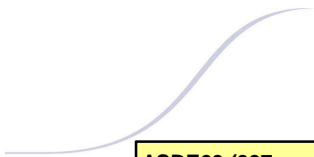


ASDE01 (1376 report parts) Offenbach 1376

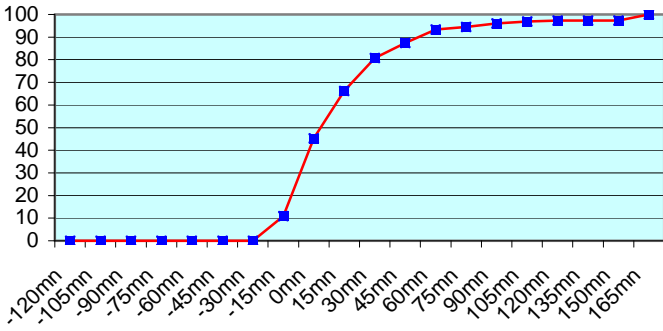


ASDE02 (1249 report parts) Offenbach 1249

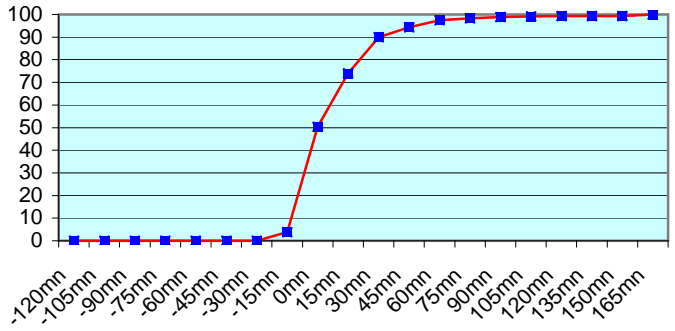




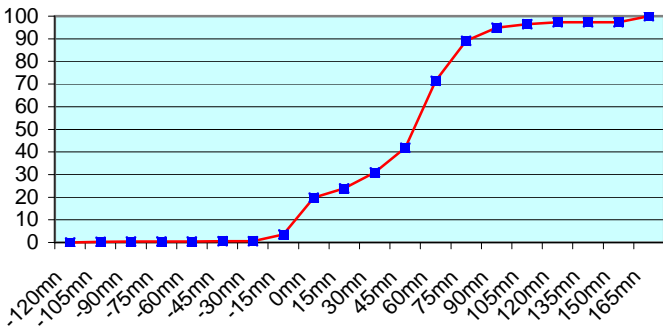
ASDE03 (937 report parts) Offenbach 937



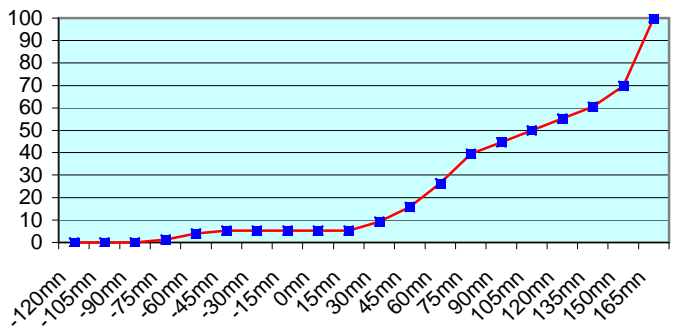
ASDE04 (1246 report parts) Offenbach 1246



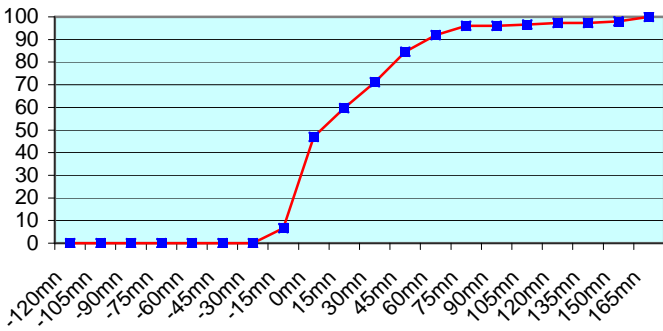
DBLK (1524 report parts) Offenbach 1524



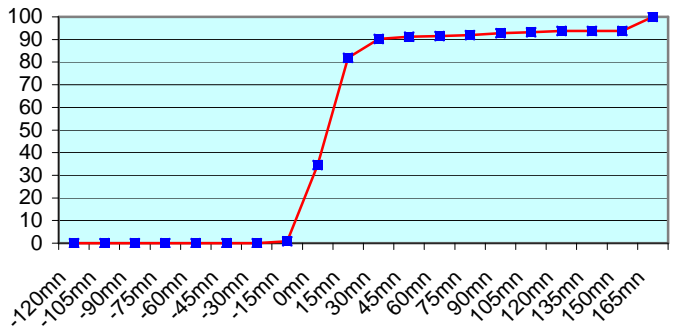
DFCG (76 report parts) Offenbach 76



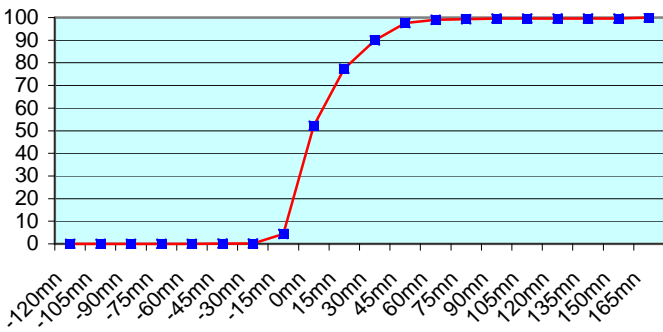
ASGB01 (298 report parts) Offenbach 298



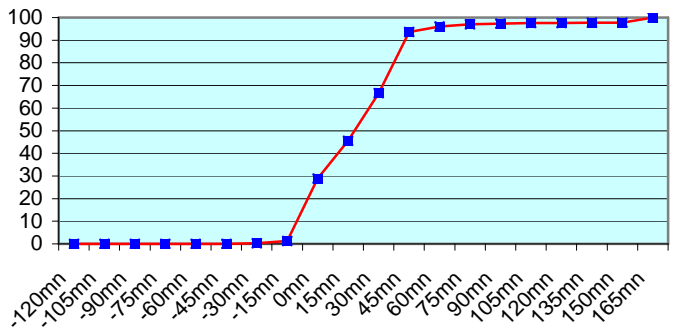
ASES01 (1008 report parts) Offenbach 1008

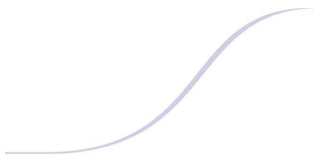


ASDK01 (1355 report parts) Offenbach 1355

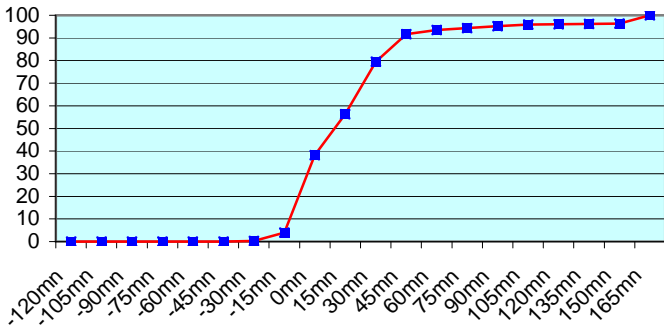


ASDK02 (1350 report parts) Offenbach 1350

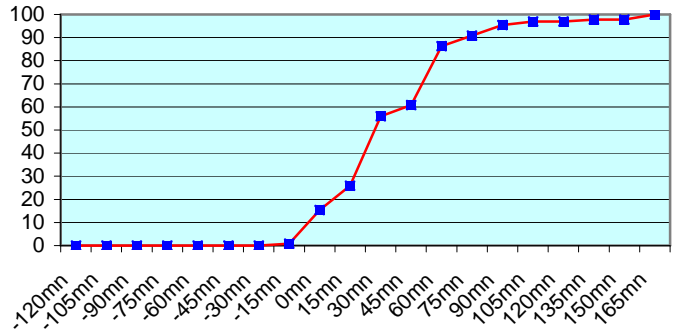




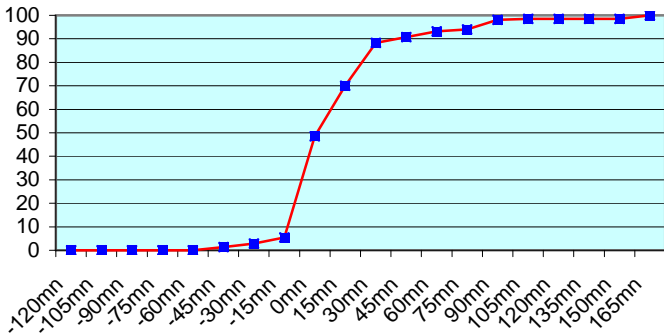
ASDK3 (1347 report parts) Offenbach 1347



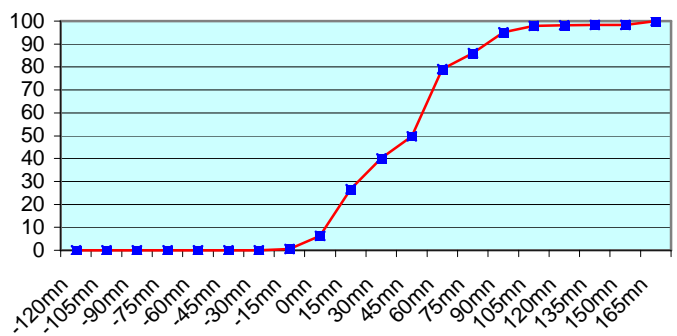
ASFR1 (920 report parts) Email 919 with supervision 1



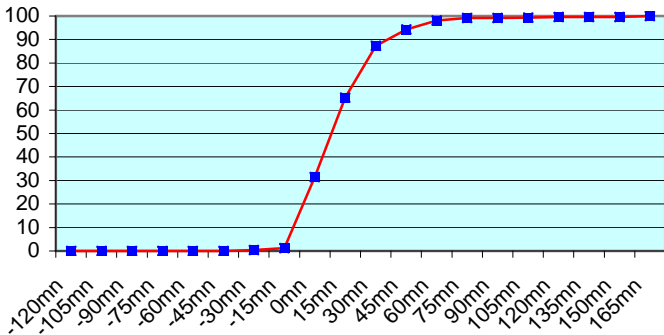
ASFR2 (1030 report parts) Email 1022 with supervision 8



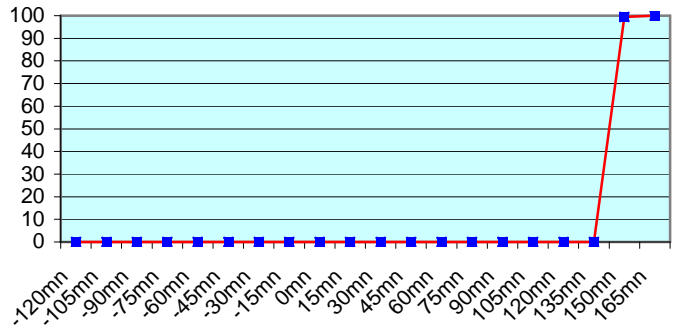
ASFR3 (741 report parts) Email 735 with supervision 6



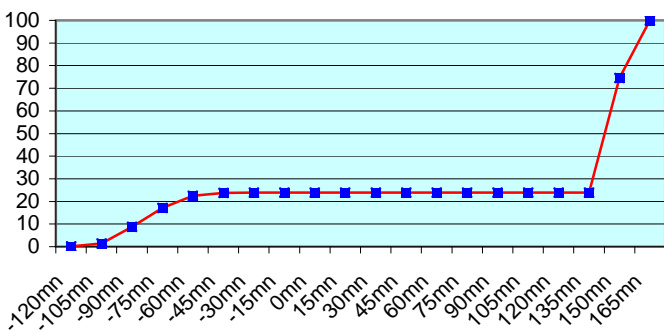
ASFR4 (1037 report parts) Email 1033 with supervision 4



JGQH (894 report parts) Exeter 894



JNSR (2025 report parts) Exeter 2025



During 2011, Météo-France Toulouse received 6120 upper air messages (TEMP) from ships. This number of messages is less than it was in 2010 (6632).

Call Sign	Messages received in 2010	Messages received in 2011	Difference 2011-2010
ASEU01	968	688	-280
ASEU02	1012	493	-519
ASEU03	910	610	-300
ASEU04	1162	519	-643
ASEU05	1052	889	-163
ASEU06	0	170	+170
ASDE01	1368	1376	+8
ASDE02	1180	1249	+69
ASDE03	1256	937	-319
ASDE04	1140	1246	+106
DBLK	1639	1524	-115
DFCG	0	76	+76
ASGB01	752	298	-454
ASDK01	1388	1355	-33
ASDK02	1366	1350	-16
ASDK3	1067	1347	+280
ASES01	600	1008	+408
ASFR1	891	920	+29
ASFR2	1079	1030	-49
ASFR3	699	741	+42
ASFR4	631	1037	+406
JGQH	201	894	+693
JNSR	2247	2025	-222
Test ASDE09	14	148	+134
Wrong or strange call sign	3890	2547	-1343

The reports were received from 24 different call signs; one of them was a test call sign. The quality of the ASAP reports was generally of a high standard, with only a small percentage of erroneous data.

Some corrupted call signs can be seen from time to time but less than in 2010.

For any comment or remark please contact Météo-France Toulouse DSO/DOA department

Gérard Rey (gerard.rey@meteo.fr)
 Daniel Bouchara (daniel.bouchara@meteo.fr)
 Hugues Jardat (hugues.jardat@meteo.fr)