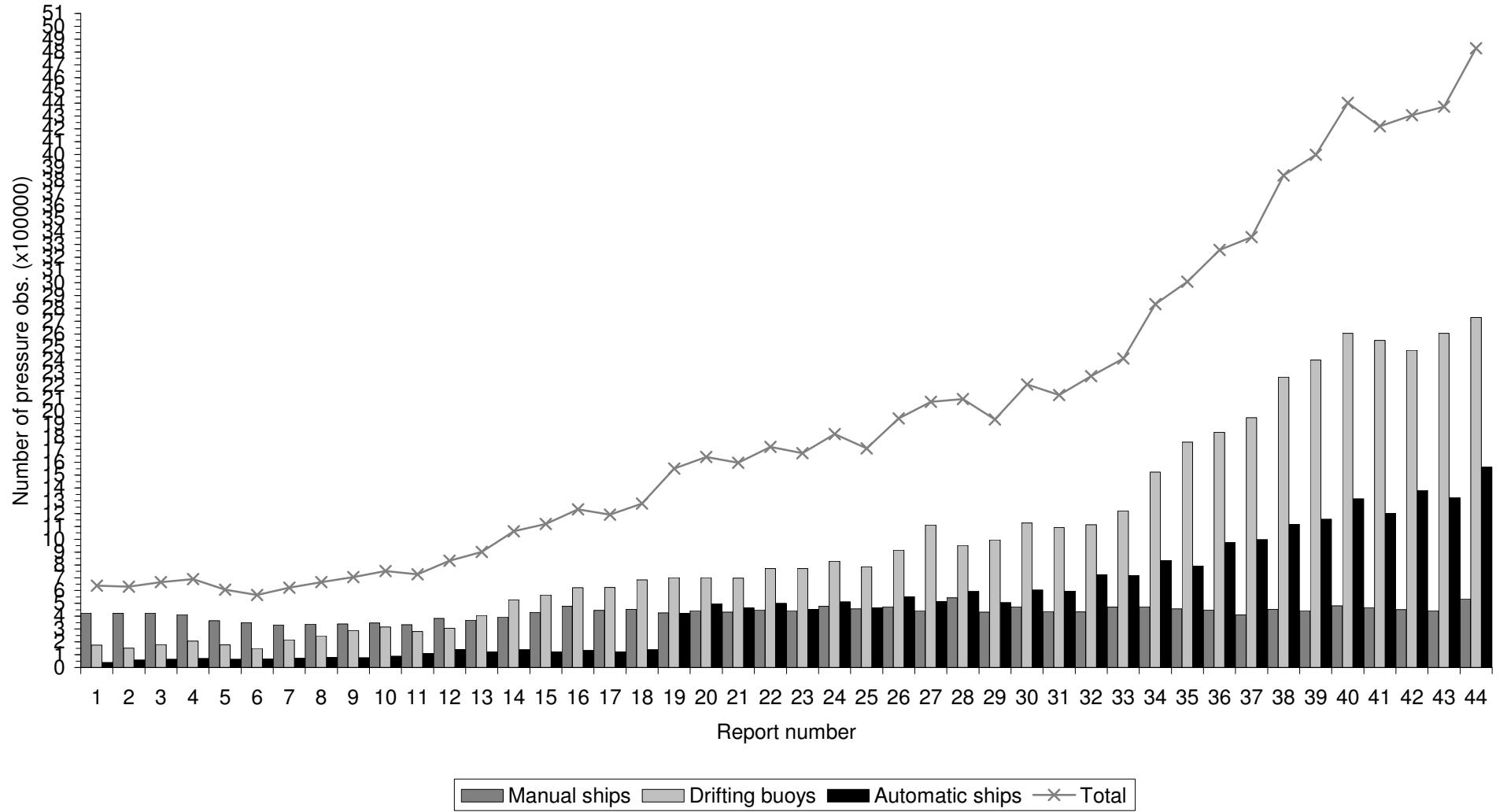
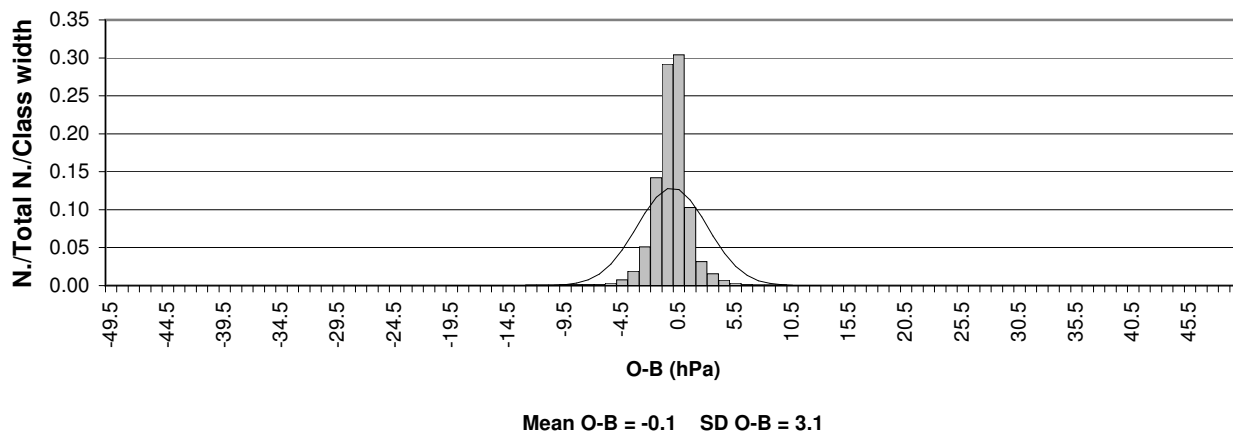


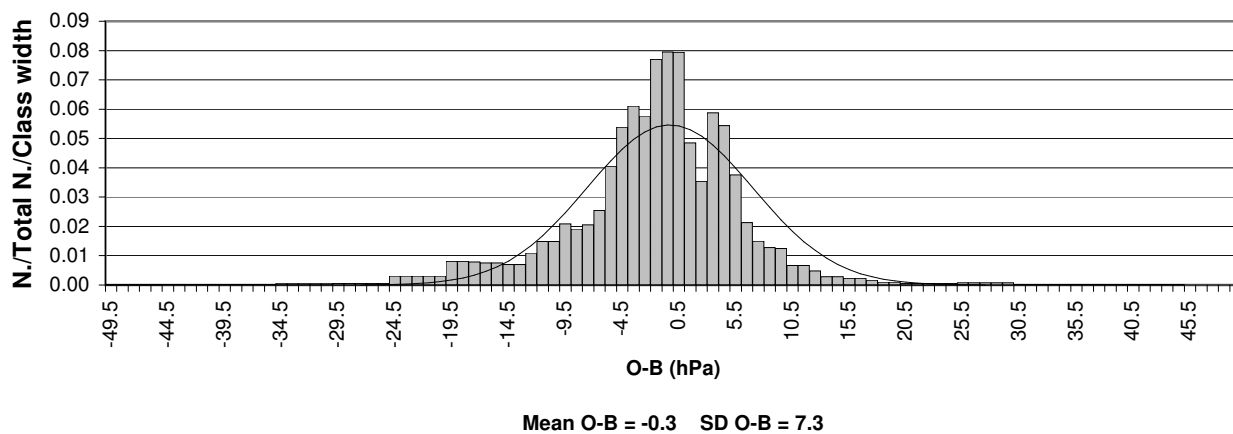
**Figure 1: Number of observations of pressure received at Exeter on the GTS for each of the six-month periods covered by the WMO reports on the quality of marine surface observations**



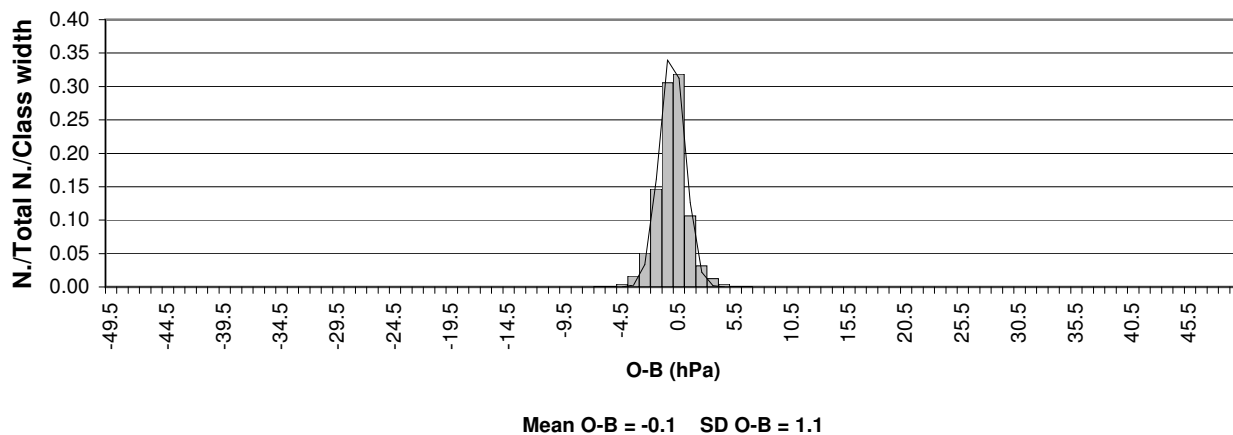
**Figure 2a: Distribution of ship O-B pressure (hPa)**  
Period of data: JUL-DEC 2010 Data used: All observations



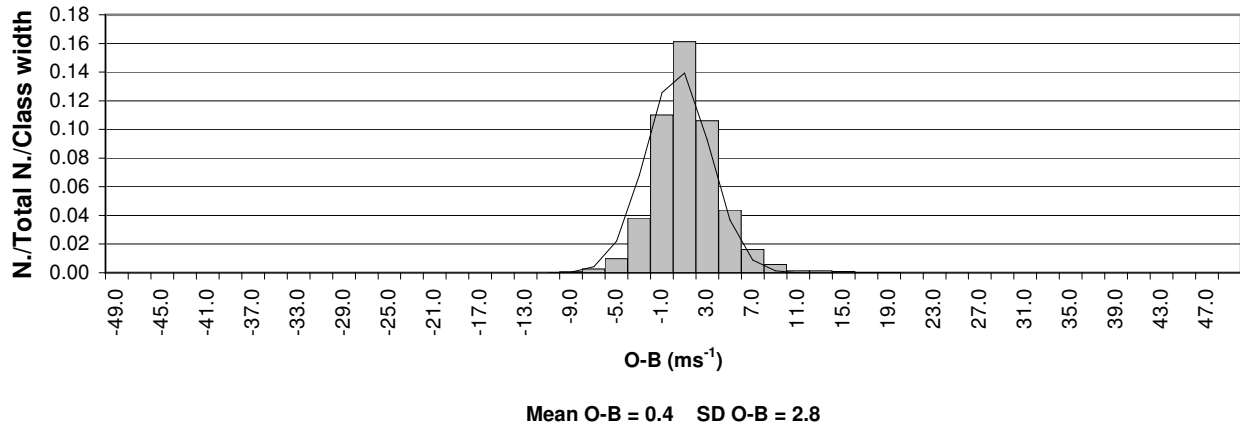
**Figure 2b: Distribution of ship O-B pressure (hPa)**  
Period of data: JUL-DEC 2010 Data used: Flagged observations



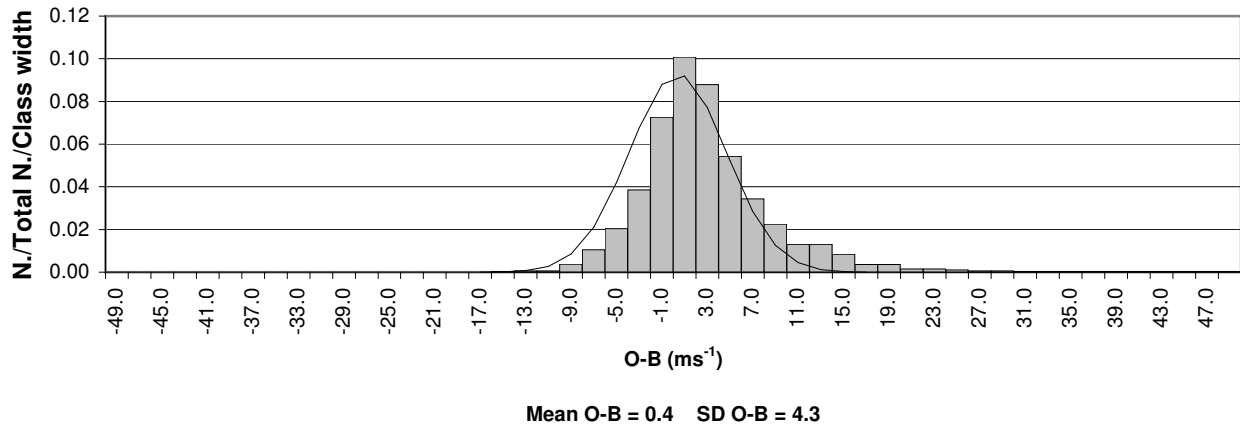
**Figure 2c: Distribution of ship O-B pressure (hPa)**  
Period of data: JUL-DEC 2010 Data used: Unflagged observations



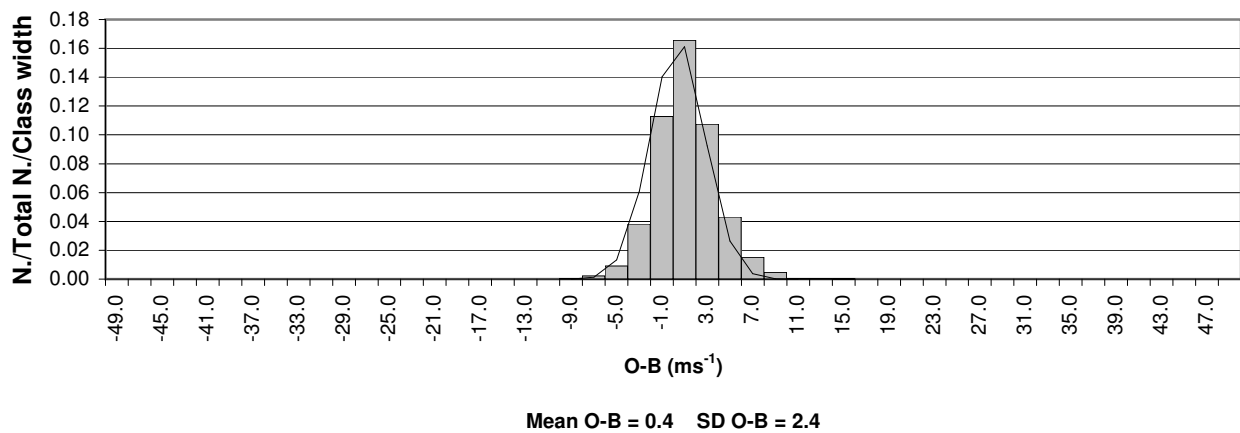
**Figure 2d: Distribution of ship O-B wind speed ( $\text{ms}^{-1}$ )**  
Period of data: JUL-DEC 2010 Data used: All observations



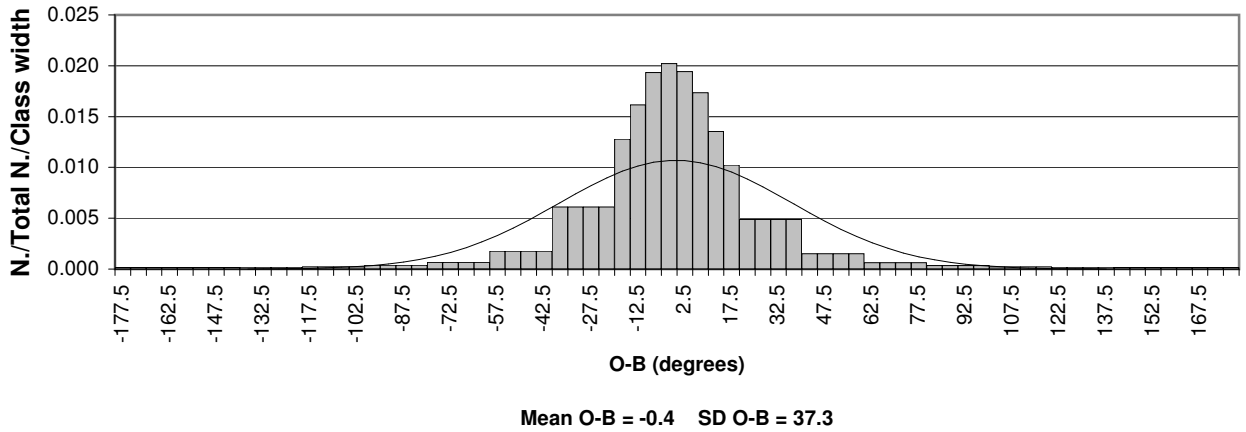
**Figure 2e: Distribution of ship O-B wind speed ( $\text{ms}^{-1}$ )**  
Period of data: JUL-DEC 2010 Data used: Flagged observations



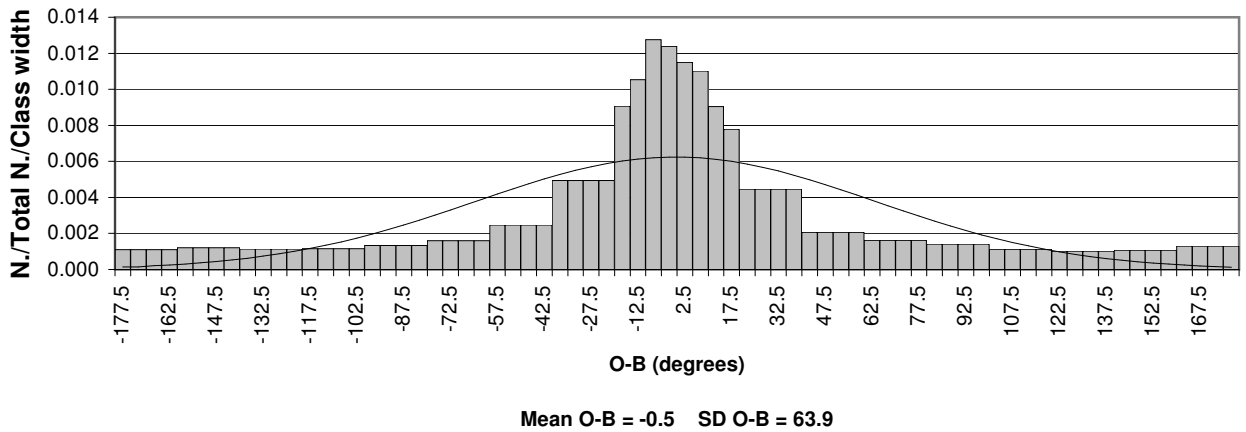
**Figure 2f: Distribution of ship O-B wind speed ( $\text{ms}^{-1}$ )**  
Period of data: JUL-DEC 2010 Data used: Unflagged observations



**Figure 2g: Distribution of ship O-B wind direction (degrees)**  
Period of data: JUL-DEC 2010 Data used: All observations



**Figure 2h: Distribution of ship O-B wind direction (degrees)**  
Period of data: JUL-DEC 2010 Data used: Flagged observations



**Figure 2i: Distribution of ship O-B wind direction (degrees)**  
Period of data: JUL-DEC 2010 Data used: Unflagged observations

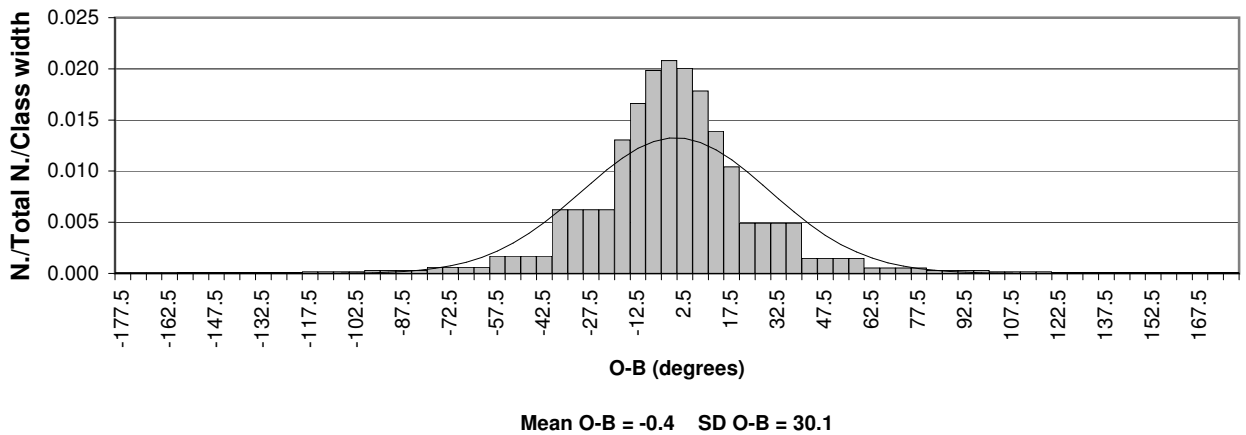


Figure 2j: Distribution of ship O-B SST (°C)  
Period of data: JUL-DEC 2010 Data used: All observations

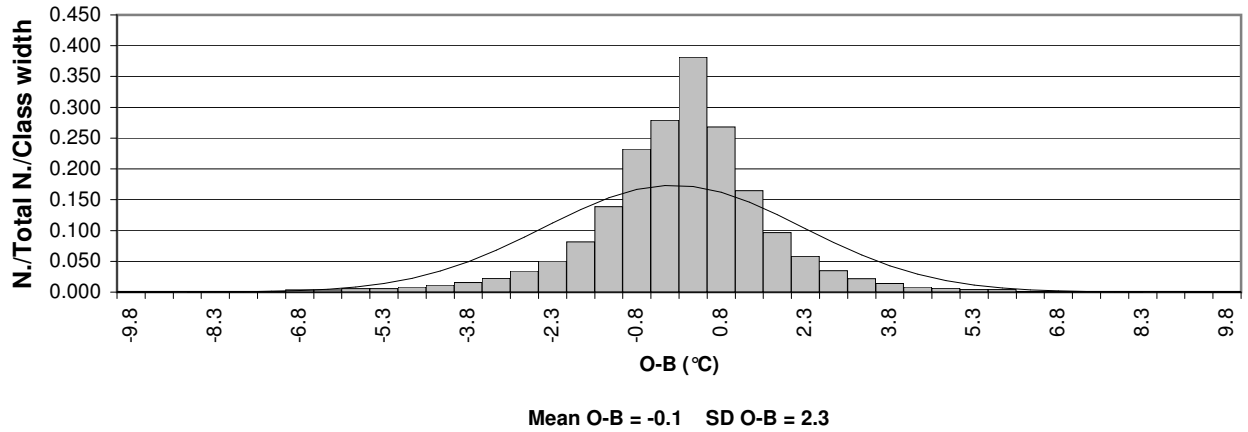


Figure 2k: Distribution of ship O-B SST (°C)  
Period of data: JUL-DEC 2010 Data used: Flagged observations

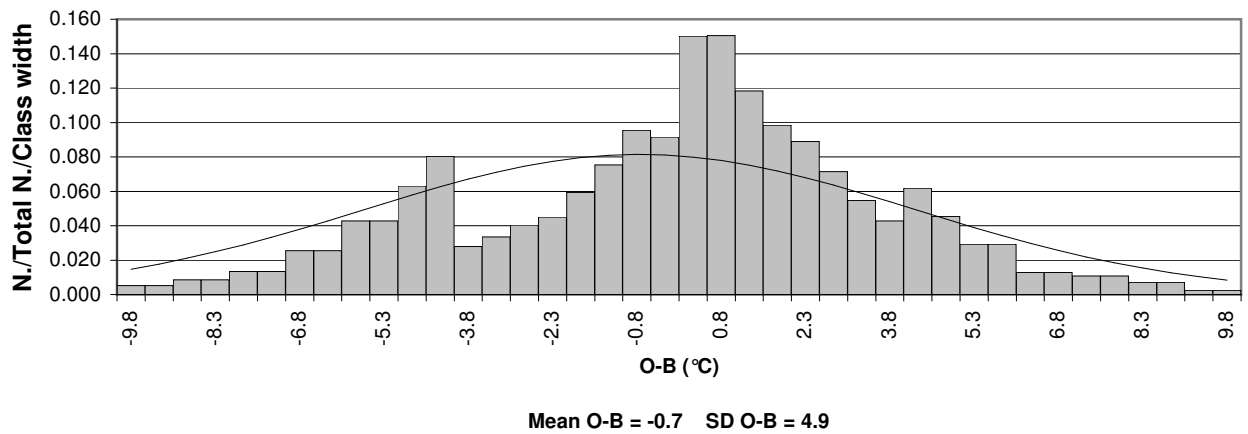
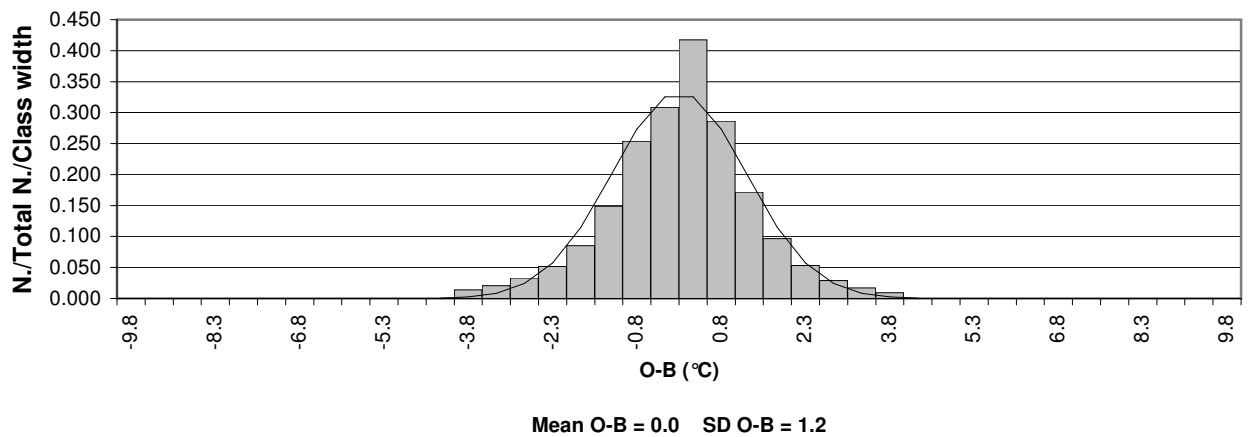


Figure 2l: Distribution of ship O-B SST (°C)  
Period of data: JUL-DEC 2010 Data used: Unflagged observations

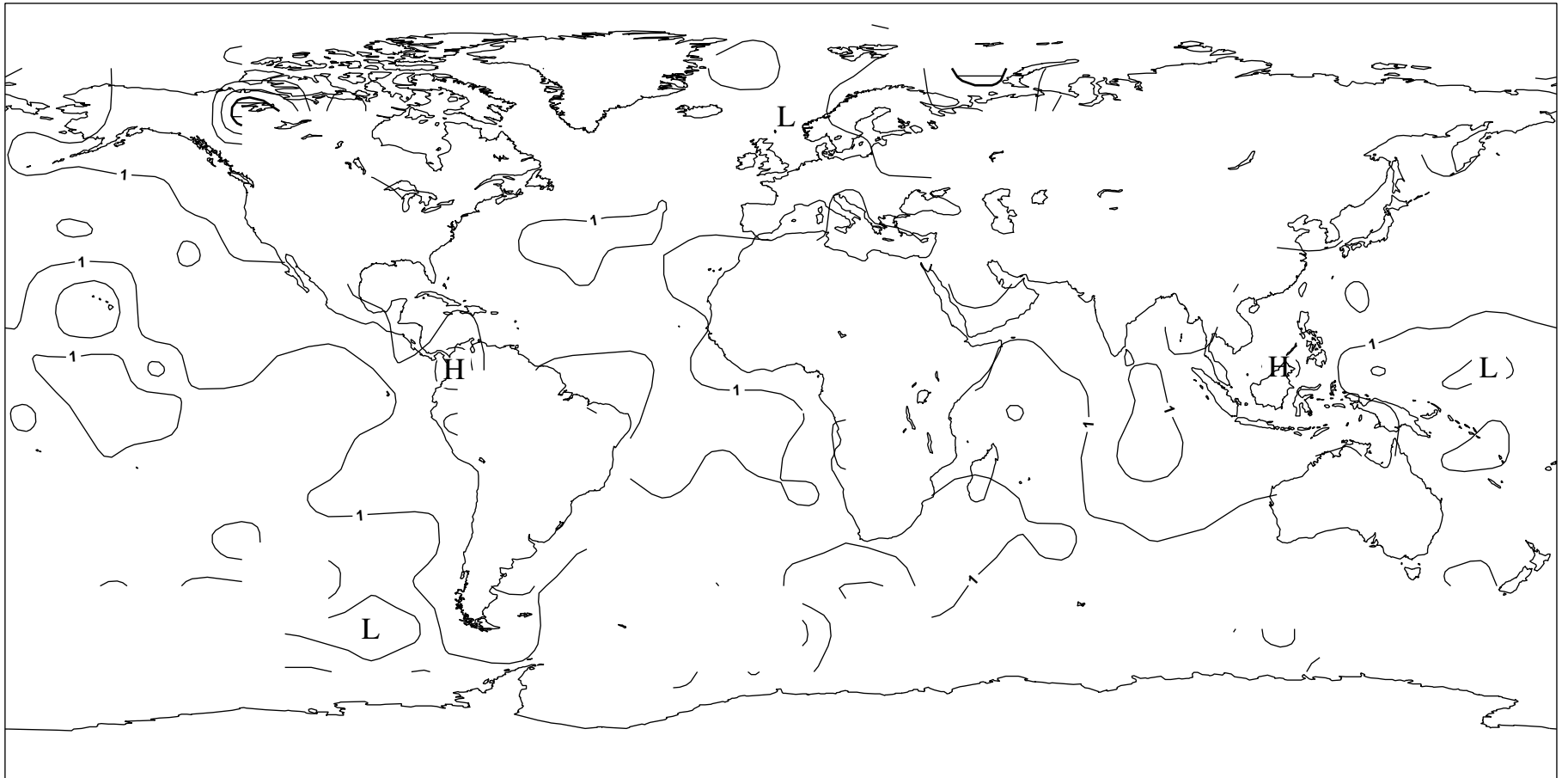




**Figure 3: Bias of Ship O-B Pressure (hPa). Date:- July - December 2010**  
**Only observations passing quality control used in statistics**  
**Contours drawn to 10 degree boxes, if the number of observations is greater than 10**  
**Shaded areas have a bias of magnitude greater than 1.0 hPa**



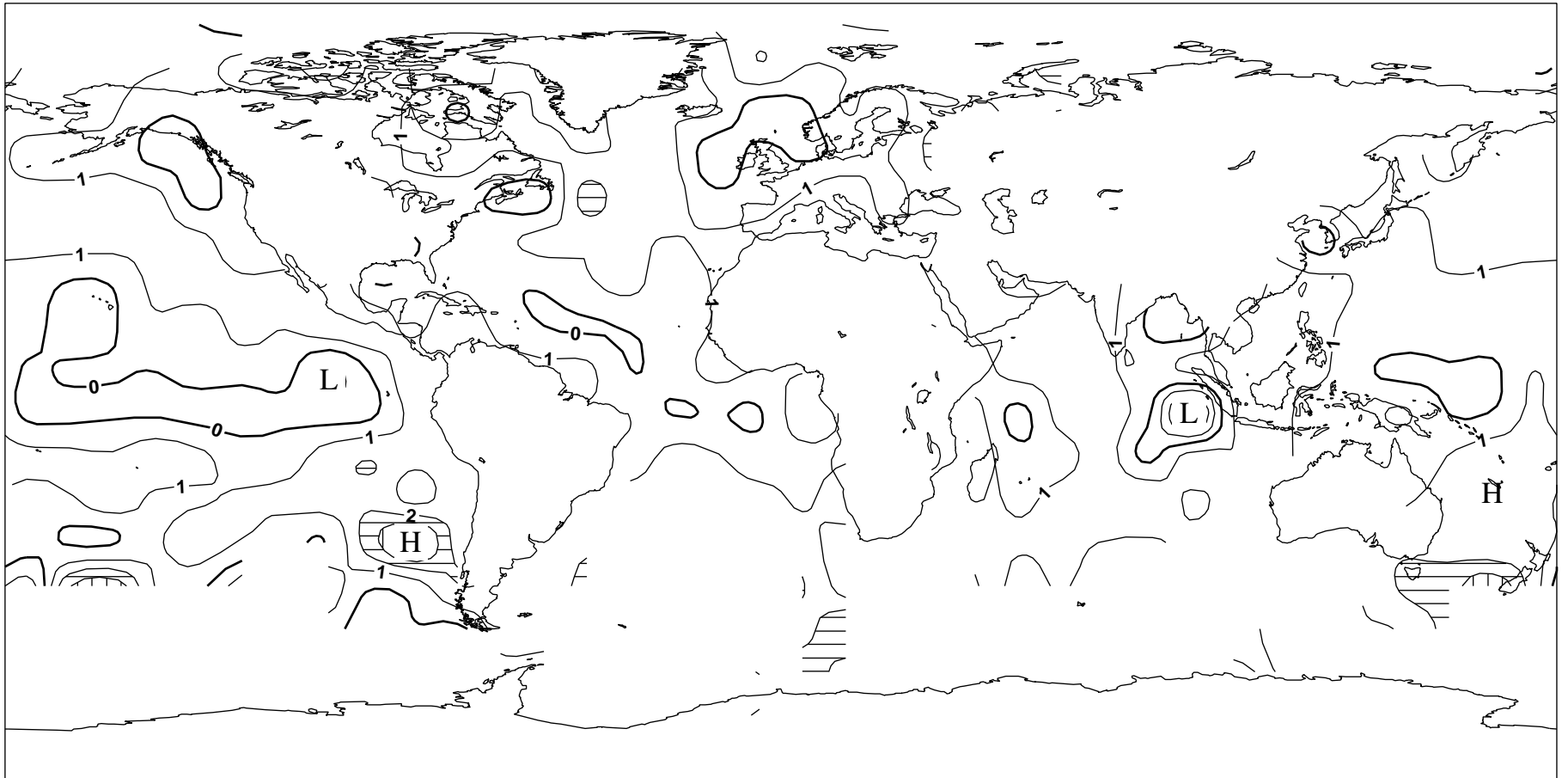
**Figure 4: Standard Deviation of Ship O-B Pressure (hPa). Date:- July - December 2010**  
**Only Observations passing quality control used in statistics**  
**Contours drawn to 10 degree boxes, if the number of observations is greater than 10**  
**Shaded areas have a standard deviation of greater than 2.0 hPa**



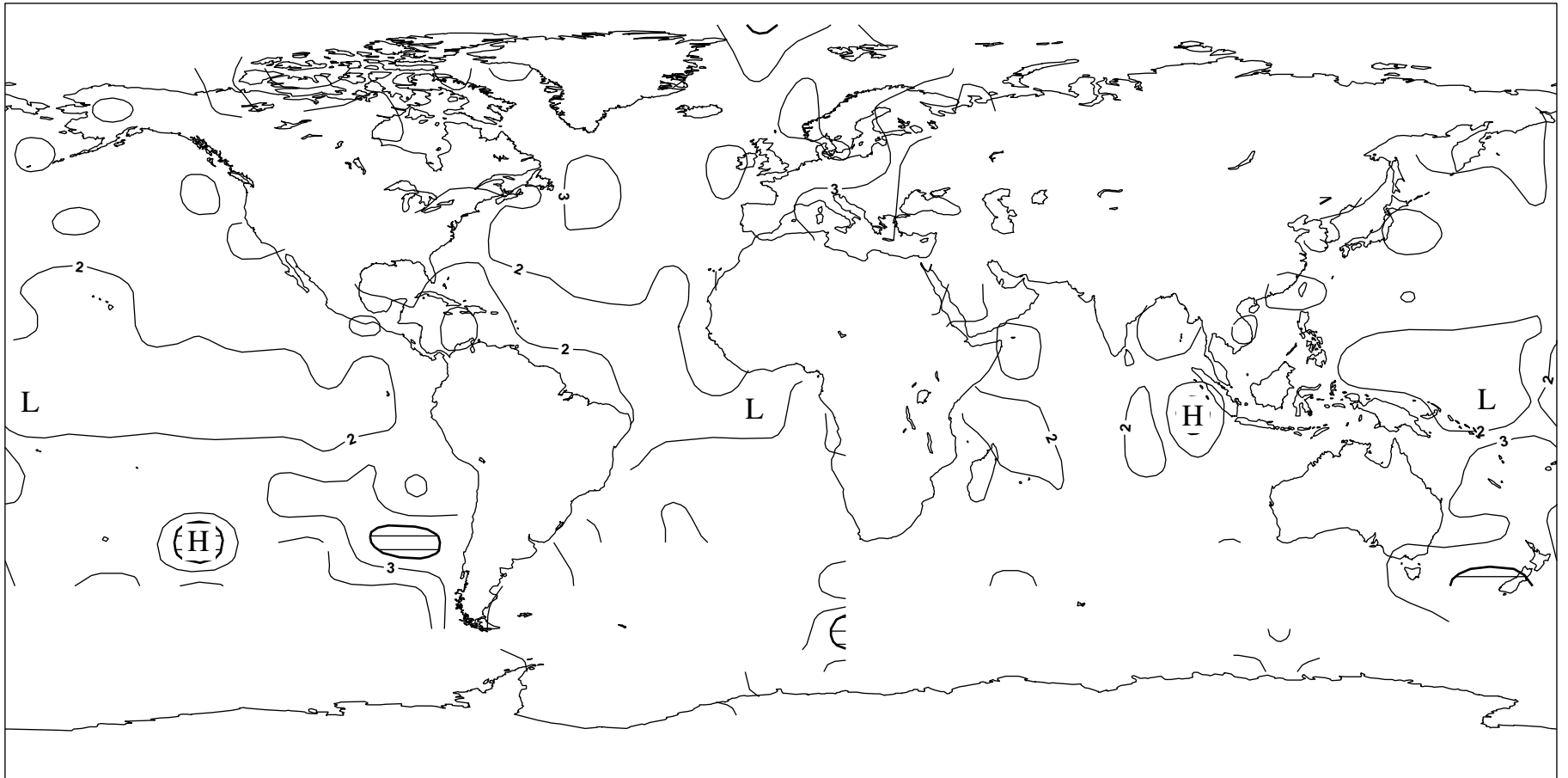




**Figure 6: Bias of Ship O-B Wind Speed (ms-1). Date:- July - December 2010**  
**Only observations passing quality control used in statistics**  
**Contours drawn to 10 degree boxes, if the number of observations is greater than 10**  
**Shaded areas have a bias of magnitude greater than 2.0 ms-1**

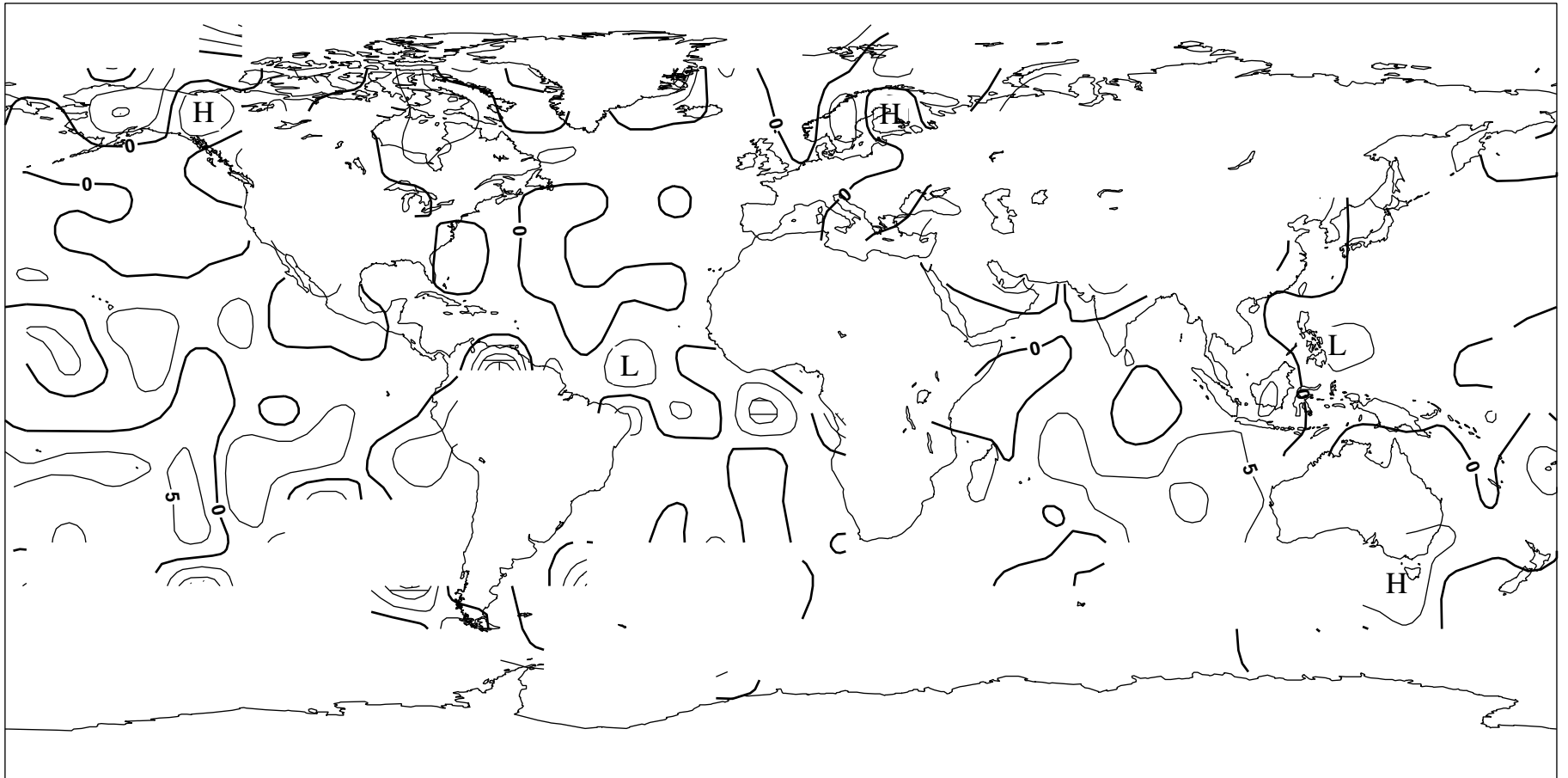


**Figure 7: Standard Deviation of Ship O-B Wind Speed (ms-1). Date:- July - December 2010**  
**Only Observations passing quality control used in statistics**  
**Contours drawn to 10 degree boxes, if the number of observations is greater than 10**  
**Shaded areas have a standard deviation of greater than 4.0 ms-1**

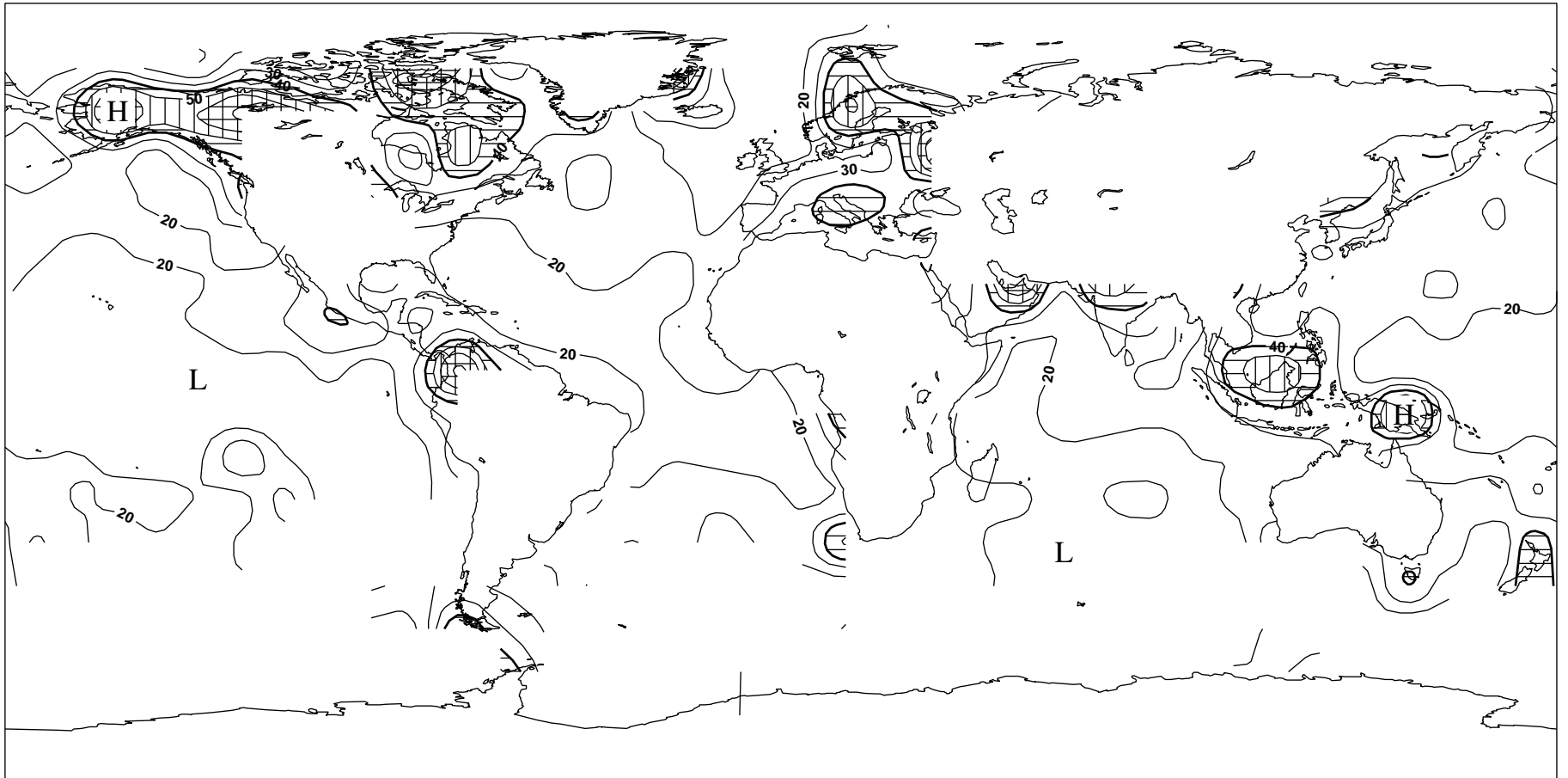




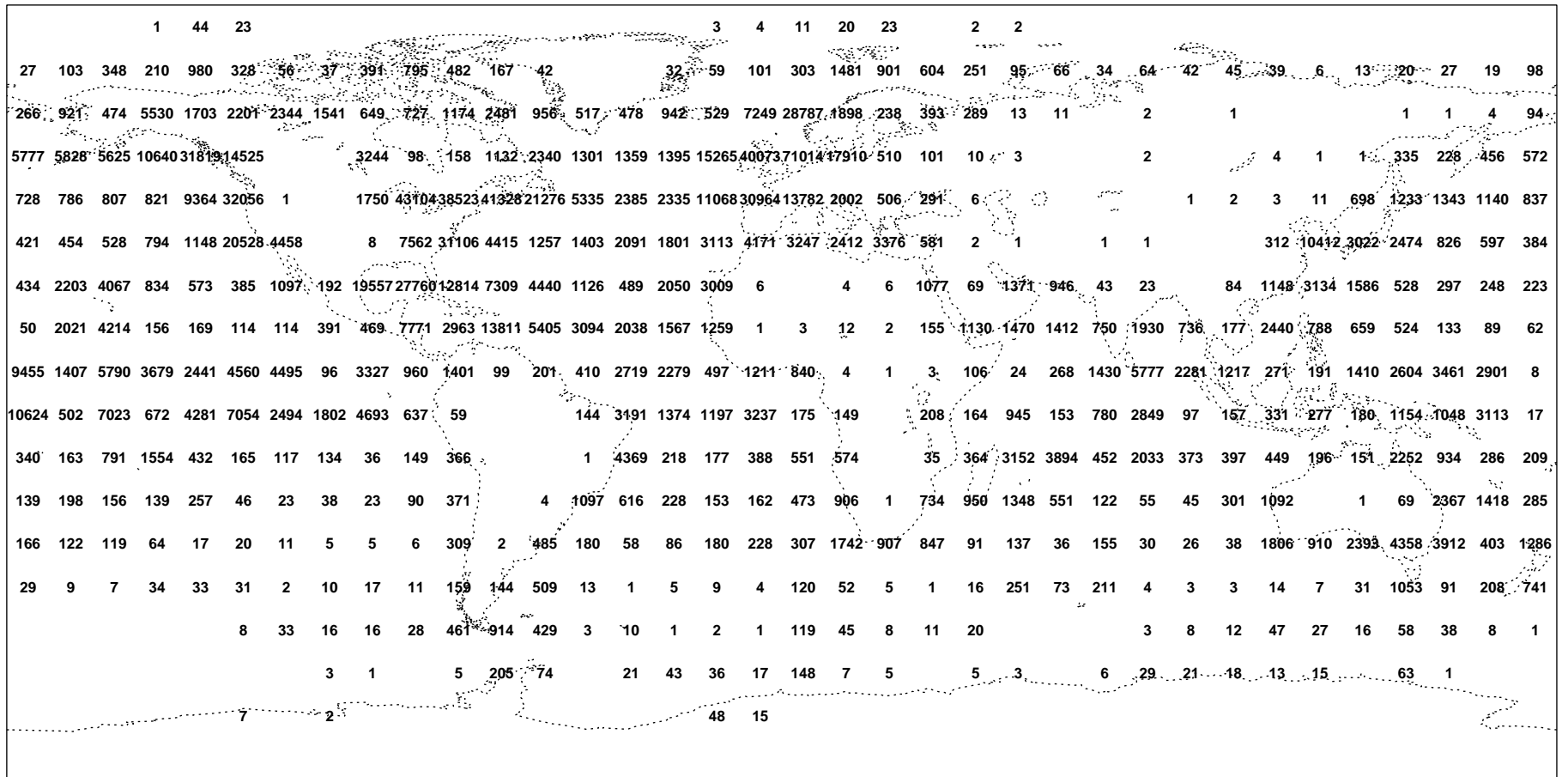
**Figure 9: Bias of Ship O-B Wind Direction (degrees). Date:- July - December 2010**  
**Only observations passing quality control used in statistics**  
**Contours drawn to 10 degree boxes, if the number of observations is greater than 10**  
**Shaded areas have a bias of magnitude greater than 10 degrees**



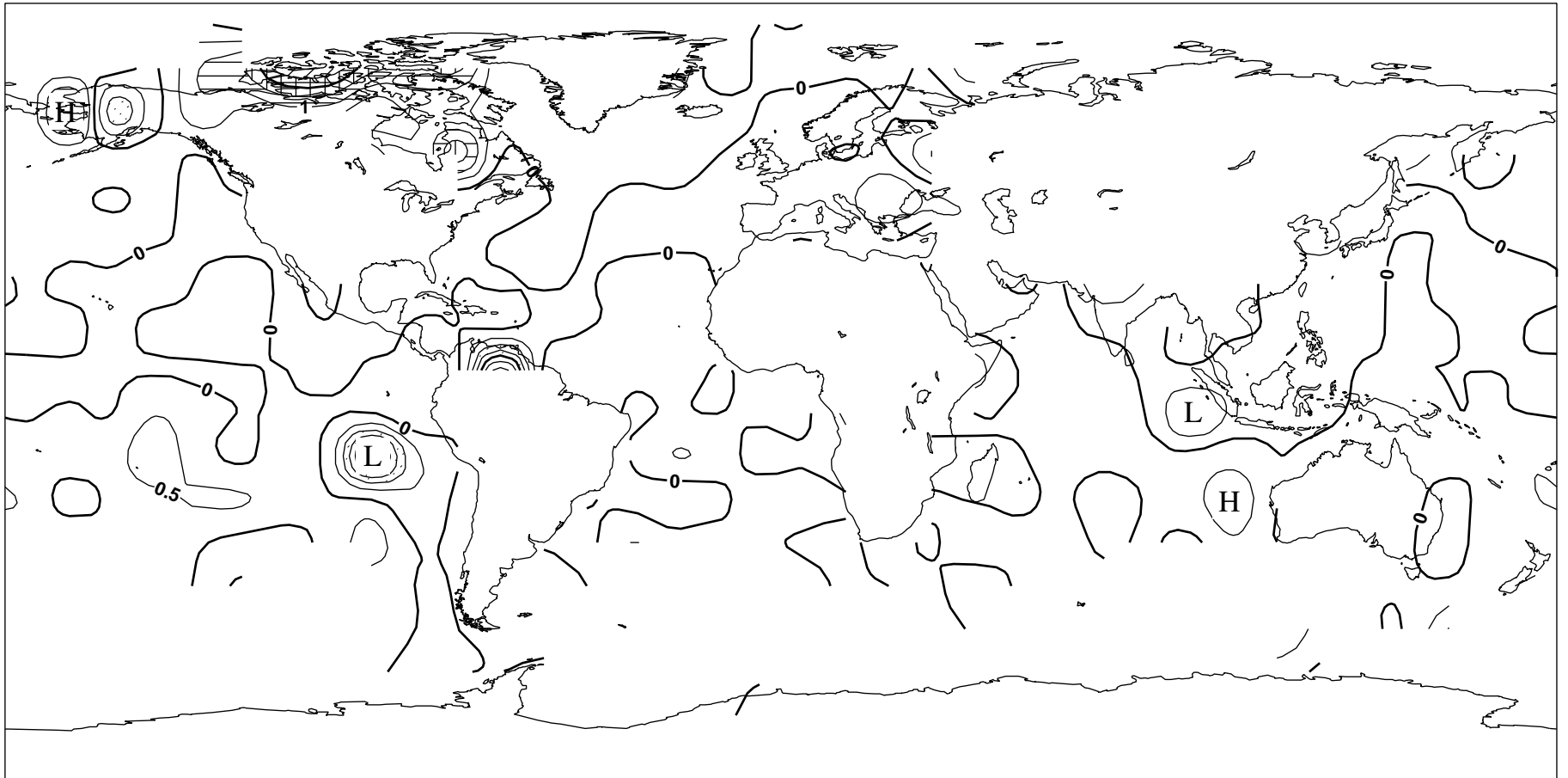
**Figure 10: Standard Deviation of Ship O-B Wind Direction (degrees). Date:- July - December 2010**  
**Only Observations passing quality control used in statistics**  
**Contours drawn to 10 degree boxes, if the number of observations is greater than 10**  
**Shaded areas have a standard deviation of greater than 40 degrees**



**Figure 11:**  
**Plot of the Number of Ship Wind Direction Observations. Date:- July - December 2010**  
**Only observations passing quality control included**

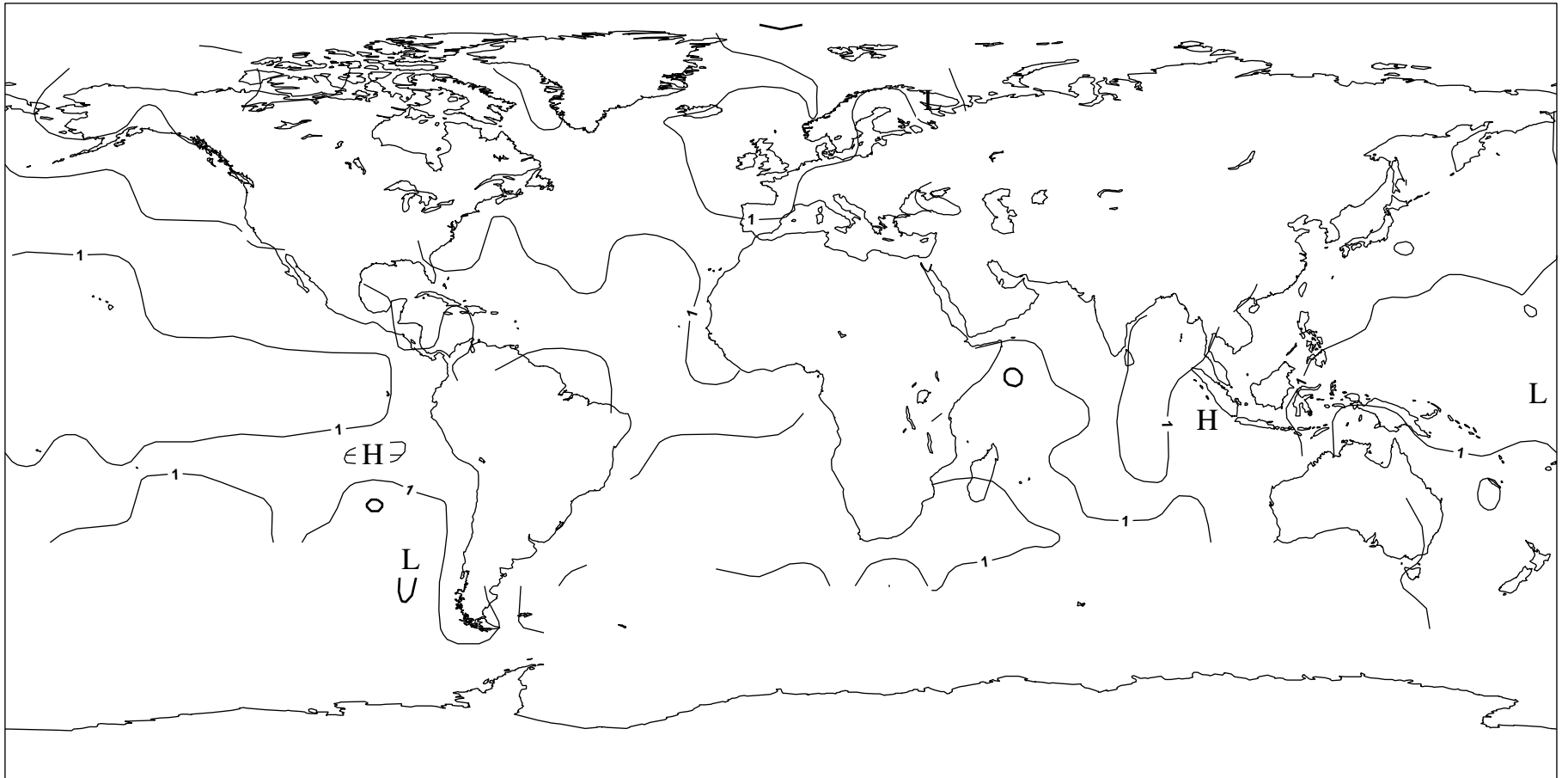


**Figure 12: Bias of Ship O-B SST (degrees C). Date:- July - December 2010**  
**Only observations passing quality control used in statistics**  
**Contours drawn to 10 degree boxes, if the number of observations is greater than 10**  
**Shaded areas have a bias of magnitude greater than 1.0 degree C**





**Figure 13: Standard Deviation of Ship O-B SST (degrees C). Date:- July - December 2010**  
**Only Observations passing quality control used in statistics**  
**Contours drawn to 10 degree boxes, if the number of observations is greater than 10**  
**Shaded areas have a standard deviation of greater than 2.0 degrees C**



**Figure 14:**  
**Plot of the Number of Ship SST Observations. Date:- July - December 2010**  
**Only observations passing quality control included**

