

Joint WMO/IOC Technical Commission for
Oceanography - Ship Observation Team

End-to-end report of the ASAP data dissemination performance

October to December 2010

1. Introduction

Météo-France is in charge of a end-to-end report of the ASAP data dissemination performance.

The matter of this paper is to evaluate the results of the three last months (October 2010 – December 2010).

2. Information available at Météo-France

TEMP-SHIP messages are received at LFPW (Toulouse) from EGRR (Exeter), EDZW (Offenbach) and Email.

The following information is available :

Reception at LFPW	Broadcast by LFPW
Call sign	Call sign
Header	Channel
Channel	Broadcast date
Reception date	Time lapse
Size	Broadcast size
Format	Recipient
Error	
Operator	

3. List of call signs available

Country	Call sign	Country	Call sign
Denmark	ASDK01	Japan	JCCX
	ASDK02		JGQH
	ASDK3		JIVB
E-ASAP	ASEU01		JDWX
	ASEU02		JNSR
	ASEU03	Norway	LDWR
	ASEU04	South Africa	ZSAF
	ASEU05	Spain	ASES01
France	ASFR1	United Kingdom	ASGB01
	ASFR2	USA	WTEC
	ASFR3	Iceland	ASIS01
	ASFR4	Australia	3FPI7
Germany	ASDE01		
	ASDE02		
	ASDE03		
	ASDE04	Test	SHIP
	DBLK		ASDE09
	DFCG		

4. Origin of the messages

Call sign	Offenbach	Exeter	Telex	Email	Mariner	Supervis	X25
ASEU01	262	0	0	0	0	0	0
ASEU02	190	0	0	0	0	0	0
ASEU03	194	0	0	0	0	0	0
ASEU04	260	0	0	0	0	0	0
ASEU05	188	0	0	0	0	0	0
ASDE01	311	0	0	0	0	0	0
ASDE02	268	0	0	0	0	0	0
ASDE03	204	0	0	0	0	0	0
ASDE04	296	0	0	0	0	0	0
DBLK	340	0	0	0	0	0	0
ASGB01	190	0	0	0	0	0	0
ASDK01	366	0	0	0	0	0	0
ASDK02	352	0	0	0	0	0	0
ASDK3	356	0	0	0	0	2	0
ASES01	205	0	0	49	0	0	0
ASFR1	0	0	0	309	0	4	0
ASFR2	0	0	0	221	0	6	0
ASFR3	0	0	0	228	0	9	0
ASFR4	0	0	0	214	0	0	0
JGQH	0	78	0	0	0	0	0
JNSR	0	272	0	0	0	0	0
Wrong or strange call sign							
XXXXX	221	732	0	101	0	2	0
numer.	9	0	0	1	0	0	0

Mariner: French navy military sounding

Supervis: handled by operator

5. Global system performance

Month	Origin	Nb of messages received	Nb of messages in error	Percentage of messages in error	Nb of messages with operator action	Percentage of messages with operator action
2010-Oct	Offenbach	1367	2	0,15		
	Exeter	516	0	0		
	Telex	0	not relevant	not relevant		
	Email	385	not relevant	not relevant		
	Mariner	0	not relevant	not relevant		
	X25	0	not relevant	not relevant		
	Supervis	2	0	0		
	Total	1883	2	0,11	2	0,11
2010-Nov	Offenbach	1446	4	0,28		
	Exeter	282	0	0		
	Telex	0	not relevant	not relevant		
	Email	376	not relevant	not relevant		
	Mariner	0	not relevant	not relevant		
	X25	0	not relevant	not relevant		
	Supervis	20	0	0		
	Total	1728	4	0,23	20	1,14
2010-Dec	Offenbach	1399	0	0		
	Exeter	284	0	0		
	Telex	0	not relevant	not relevant		
	Email	362	not relevant	not relevant		
	Mariner	0	not relevant	not relevant		
	X25	0	not relevant	not relevant		
	Supervis	1	0	0		
	Total	1683	0	0	1	0,06
Total	Offenbach	4212	6	0,14		
	Exeter	1082	0	0		
	Telex	0	not relevant	not relevant		
	Email	1123	not relevant	not relevant		
	Mariner	0	not relevant	not relevant		
	X25	0	not relevant	not relevant		
	Supervis	23	0	0		
	Total	6440	6	0,11	23	0,43

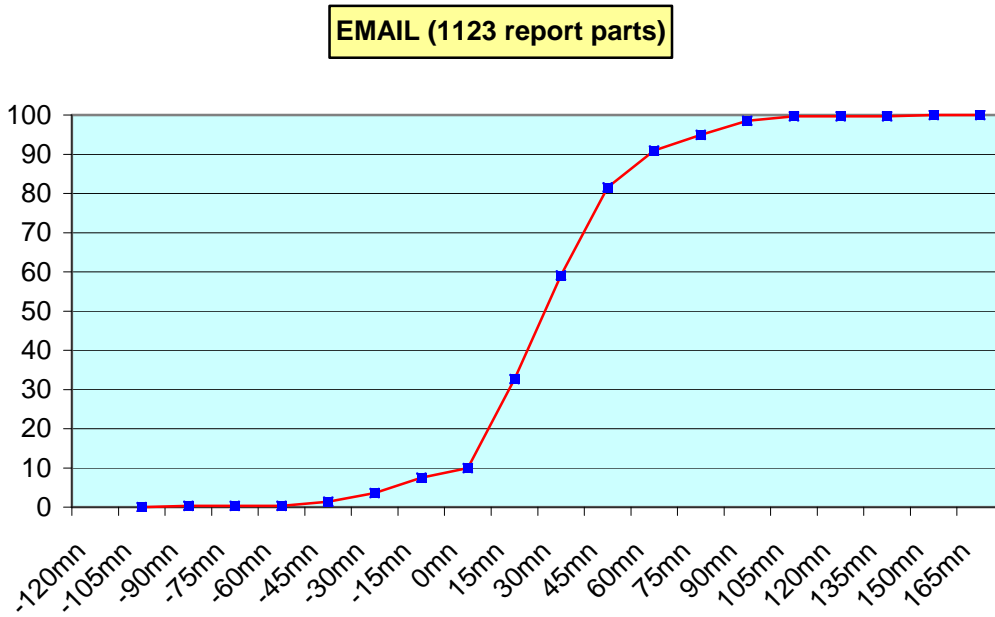
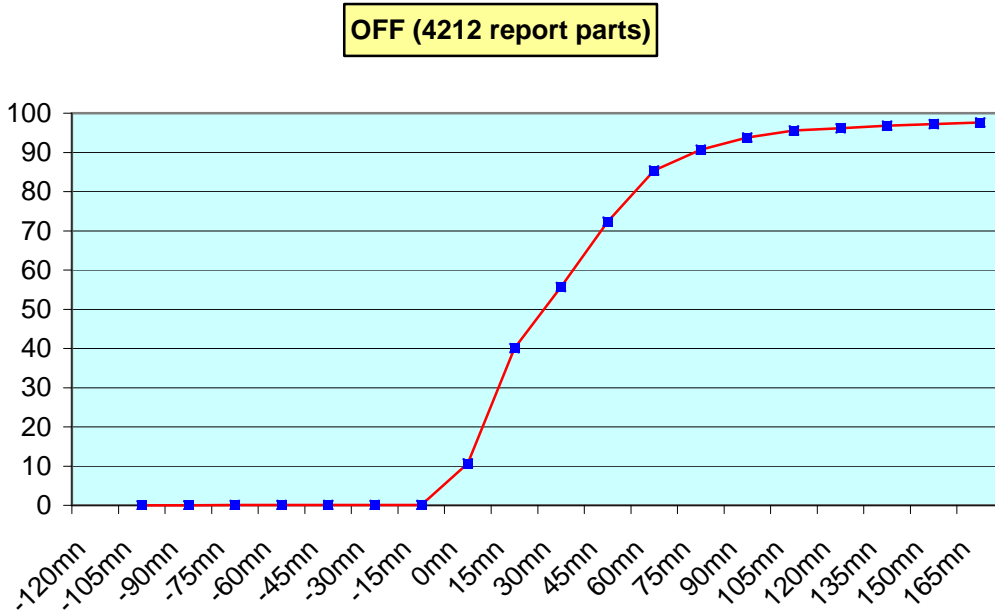
Remark: Email messages were excluded from the number of messages in error and from the relative percentage as values are regarded as not relevant. Not relevant percentages are due to not relevant values or to a total amount of data equal to zero.

6. Global result of the syntactic check for the messages for each call sign.

Call sign	Nb of messages received	Nb of messages in error	Percentage of messages in error	Nb of messages with operator action	Percentage of messages with operator action
ASEU01	262	0	0	0	0
ASEU02	190	0	0	0	0
ASEU03	194	0	0	0	0
ASEU04	260	0	0	0	0
ASEU05	188	0	0	0	0
ASDE01	311	0	0	0	0
ASDE02	268	0	0	0	0
ASDE03	204	0	0	0	0
ASDE04	296	0	0	0	0
DBLK	340	4	1,18	0	0
ASGB01	190	0	0	0	0
ASDK01	366	0	0	0	0
ASDK02	352	0	0	0	0
ASDK3	358	2	0,56	2	0,56
ASES01	254	0	0	0	0
ASFR1	313	0	0	4	1,28
ASFR2	227	0	0	6	2,64
ASFR3	237	0	0	9	3,8
ASFR4	214	0	0	0	0
JGQH	78	0	0	0	0
JNSR	272	0	0	0	0
Wrong or strange call sign					
XXXXX	1056	0	0	2	0,19
numer.	10	0	0	0	0

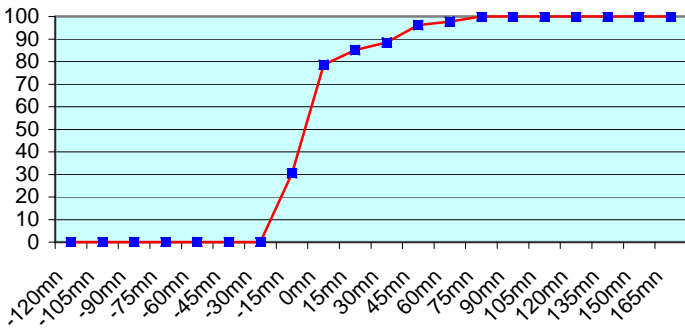
Remark: Data transmitted through email displayed an error rate close to 100% due to email syntax and were thus regarded as not relevant and excluded from errors total amount.

7. Mean time before the integration of the messages in the GTS in Toulouse. HH is the synoptic hour of reference.

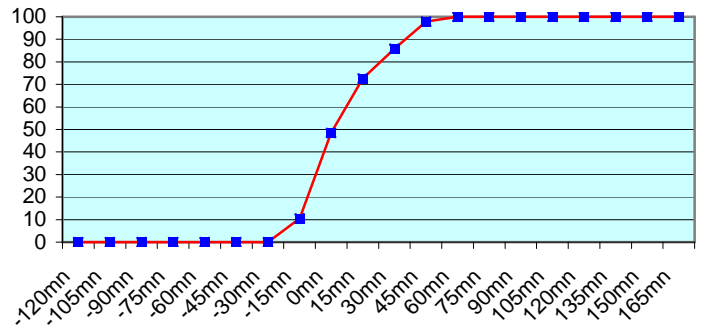




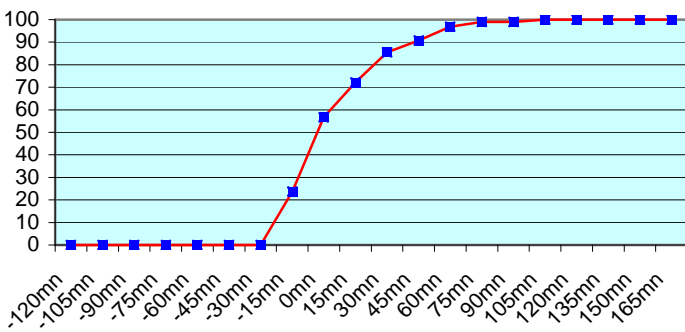
ASEU01 (262 report parts) Offenbach 262



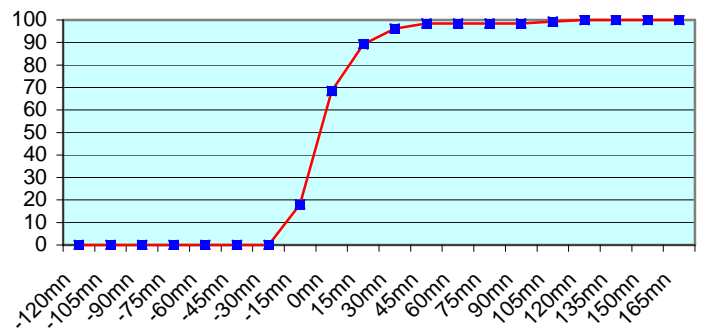
ASEU02 (190 report parts) Offenbach 190



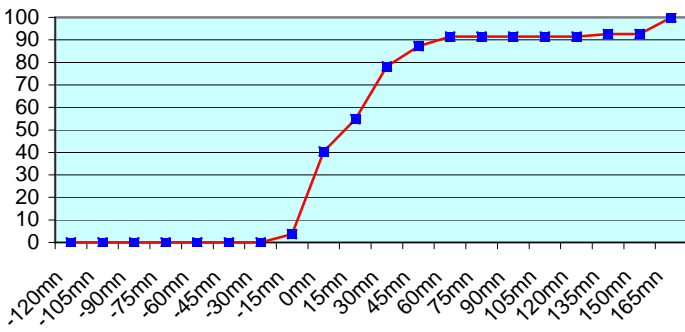
ASEU03 (194 report parts) Offenbach 194



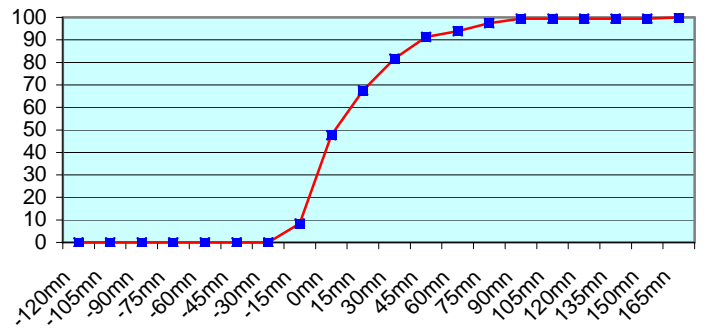
ASEU04 (260 report parts) Offenbach 260



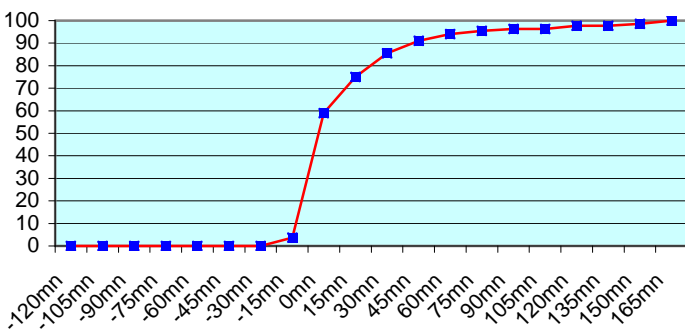
ASEU05 (188 report parts) Offenbach 188



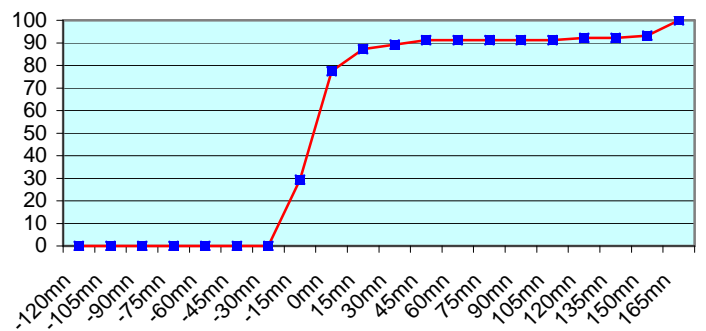
ASDE01 (311 report parts) Offenbach 311

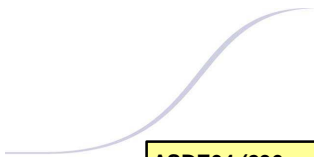


ASDE02 (268 report parts) Offenbach 268

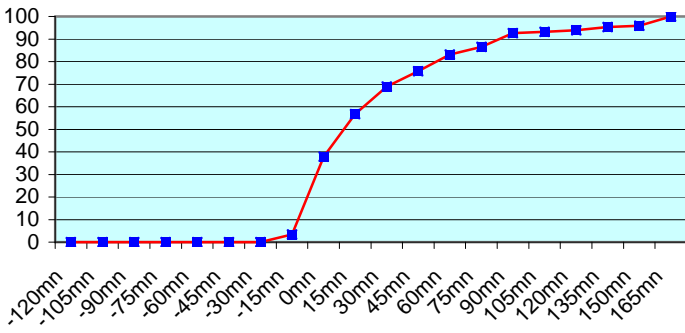


ASDE03 (204 report parts) Offenbach 204

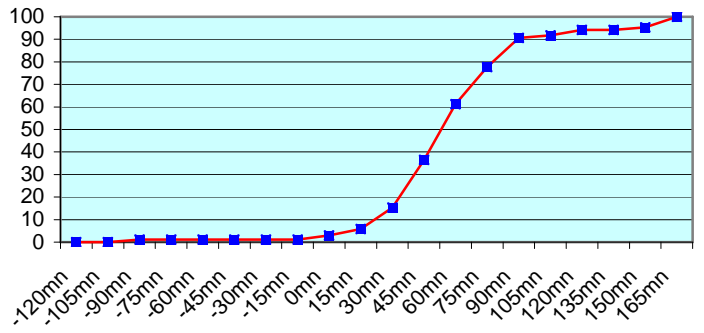




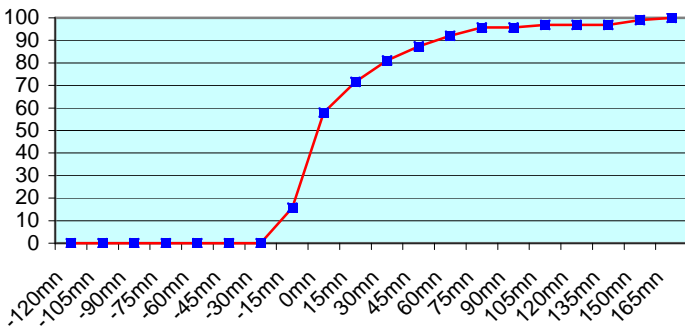
ASDE04 (296 report parts) Offenbach 296



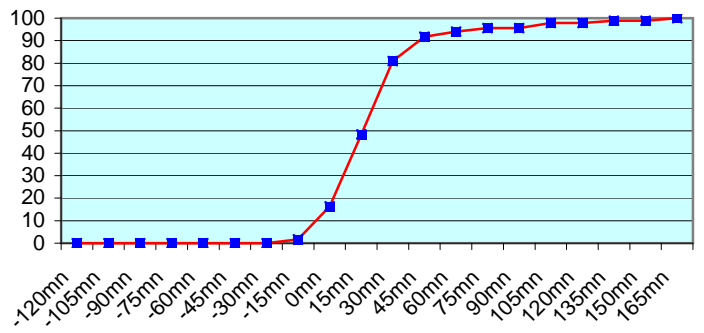
DBLK (340 report parts) Offenbach 340



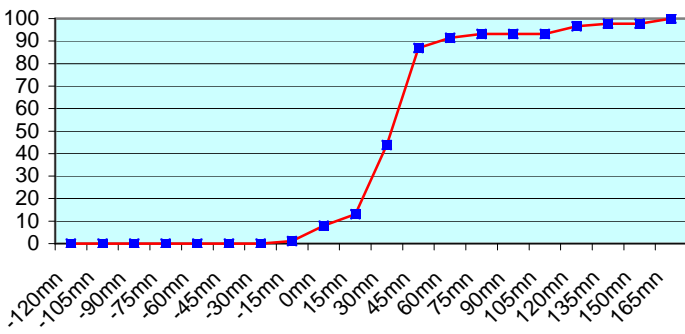
ASGB01 (190 report parts) Offenbach 190



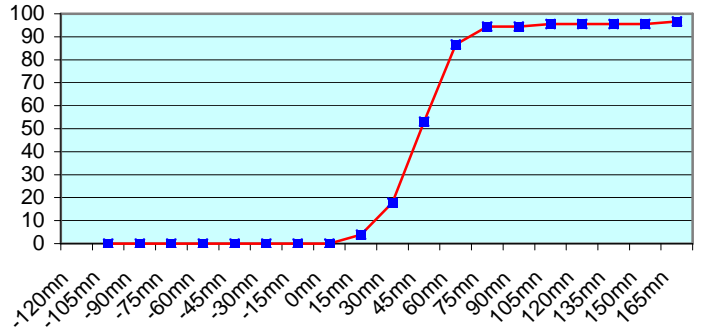
ASDK01 (366 report parts) Offenbach 366



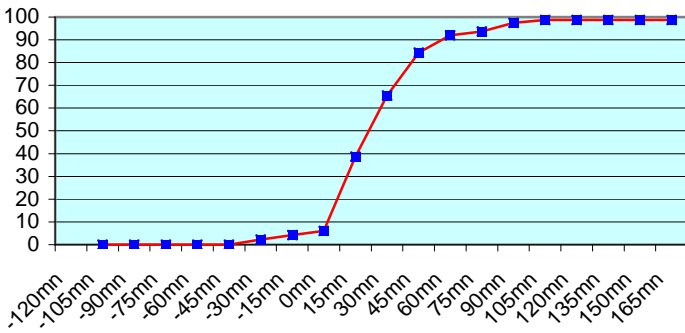
ASDK02 (352 report parts) Offenbach 352



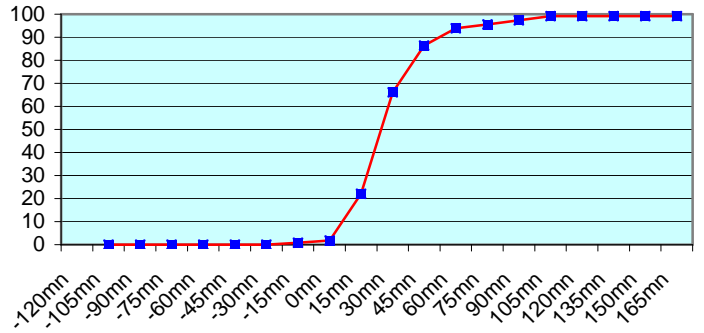
ASDK3 (358 report parts) Offenbach 356 with supervision 2

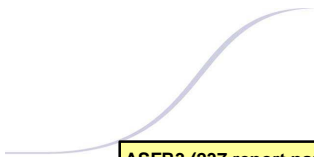


ASFR1 (313 report parts) Email 309 with supervision 4

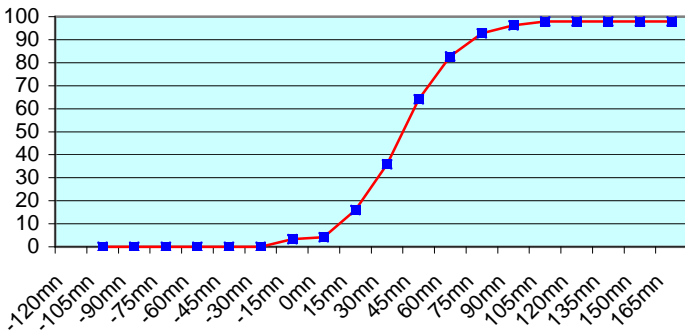


ASFR2 (227 report parts) Email 221 with supervision 6

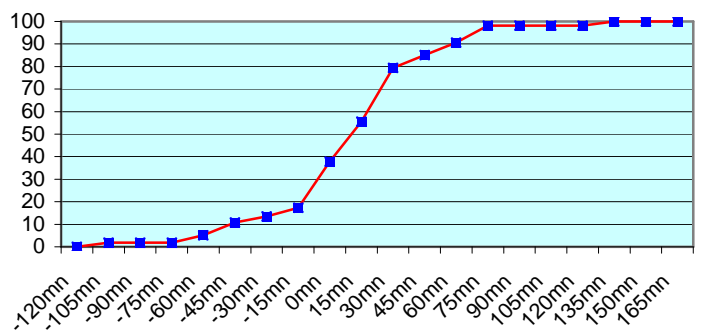




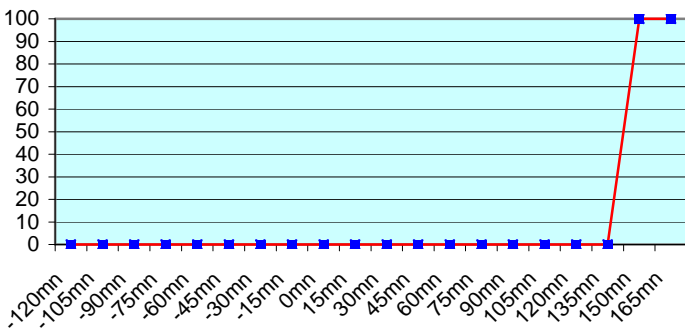
ASFR3 (237 report parts) Email 228 with supervision 9



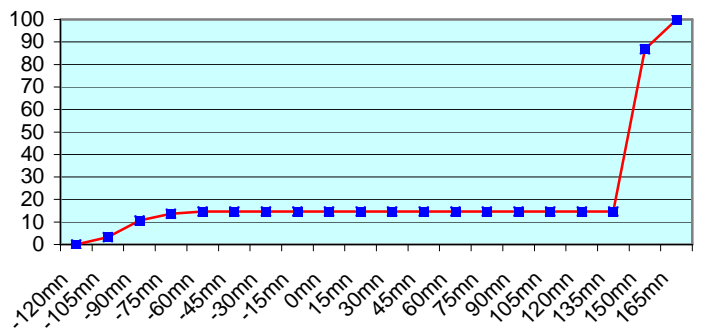
ASFR4 (214 report parts) Email 214



JGQH (78 report parts) Exeter 78



JNSR (272 report parts) Exeter 272



During the three last months, no particular problem was noticed concerning the European ships.

Japanese ships follow a different procedure with an important shift between the sending of the message and the synoptic hour. So, no graphic was displayed about Exeter.

For any comment or remark please contact Météo-France Toulouse DSO/DOA department

Gérard Rey (gerard.rey@meteo.fr)

Daniel Bouchara (daniel.bouchara@meteo.fr)

Hugues Jardat (hugues.jardat@meteo.fr)