

Joint WMO/IOC Technical Commission for  
Oceanography - Ship Observation Team

# **End-to-end report of the ASAP data dissemination performance**

## **July to September 2010**

## 1. Introduction

Météo-France is in charge of a end-to-end report of the ASAP data dissemination performance.

The matter of this paper is to evaluate the results of the three last months (July 2010 – September 2010).

## 2. Information available at Météo-France

TEMP-SHIP messages are received at LFPW (Toulouse) from EGRR (Exeter), EDZW (Offenbach) and Email.

The following information is available :

Reception at LFPW	Broadcast by LFPW
Call sign	Call sign
Header	Channel
Channel	Broadcast date
Reception date	Time lapse
Size	Broadcast size
Format	Recipient
Error	
Operator	

### 3. List of call signs available

<b>Country</b>	<b>Call sign</b>	<b>Country</b>	<b>Call sign</b>
Denmark	ASDK01	Japan	JCCX
	ASDK02		JGQH
	ASDK3		JIVB
E-ASAP	ASEU01		JDWX
	ASEU02		JNSR
	ASEU03	Norway	LDWR
	ASEU04	South Africa	ZSAF
	ASEU05	Spain	ASES01
France	ASFR1	United Kingdom	ASGB01
	ASFR2	USA	WTEC
	ASFR3	Iceland	ASIS01
	ASFR4	Australia	3FPI7
Germany	ASDE01		
	ASDE02		
	ASDE03		
	ASDE04	Test	SHIP
	DBLK		ASDE09
	DFCG		

#### 4. Origin of the messages

Call_sign	Offenbach	Exeter	Telex	Email	Mariner	Supervis	X25
ASEU01	222	0	0	0	0	0	0
ASEU02	297	0	0	0	0	0	0
ASEU03	210	0	0	0	0	0	0
ASEU04	290	0	0	0	0	0	0
ASEU05	248	0	0	0	0	0	0
ASDE01	352	0	0	0	0	0	0
ASDE02	383	0	0	0	0	0	0
ASDE03	338	0	0	0	0	0	0
ASDE04	312	0	0	0	0	0	0
DBLK	618	0	0	0	0	0	0
ASGB01	214	0	0	0	0	0	0
ASDK01	330	0	0	0	0	0	0
ASDK02	397	0	0	0	0	0	0
ASES01	0	0	0	83	0	0	0
ASFR1	0	0	0	221	0	11	0
ASFR2	0	0	0	266	0	0	0
ASFR3	0	0	0	244	0	0	0
ASFR4	0	0	0	197	0	5	1
JGQH	0	7	0	0	0	0	0
JNSR	0	576	0	0	0	0	0
ASDK3	333	0	0	0	0	0	0
Wrong or strange call-sign							
XXXXX	193	732	0	48	0	0	0
numer.	7	0	0	1	0	0	0

Mariner: French navy military sounding

Supervis: handled by operator

## 5. Global system performance

Month	Origin	Nb of messages received	Nb of messages in error	Percentage of messages in error	Nb of messages with operator action	Percentage of messages with operator action
2010-Jul	Offenbach	1583	0	0		
	Exeter	248	0	0		
	Telex	0	not relevant	not relevant		
	Email	345	not relevant	not relevant		
	Mariner	0	not relevant	not relevant		
	X25	1	not relevant	not relevant		
	Supervis	8	0	0		
	Total	1831	0	0	8	0,44
2010-Aug	Offenbach	1655	0	0		
	Exeter	255	0	0		
	Telex	0	not relevant	not relevant		
	Email	368	not relevant	not relevant		
	Mariner	0	not relevant	not relevant		
	X25	0	not relevant	not relevant		
	Supervis	0	0	not relevant		
	Total	1910	0	0	0	0
2010-Sep	Offenbach	1506	0	0		
	Exeter	812	0	0		
	Telex	0	not relevant	not relevant		
	Email	347	not relevant	not relevant		
	Mariner	0	not relevant	not relevant		
	X25	0	not relevant	not relevant		
	Supervis	8	0	0		
	Total	2318	0	0	8	0,34
Total	Offenbach	4744	0	0		
	Exeter	1315	0	0		
	Telex	0	0	not relevant		
	Email	1060	1060	100		
	Mariner	0	not relevant	not relevant		
	X25	1	not relevant	not relevant		
	Supervis	16	0	0		
	Total	7136	0	0	16	0,26

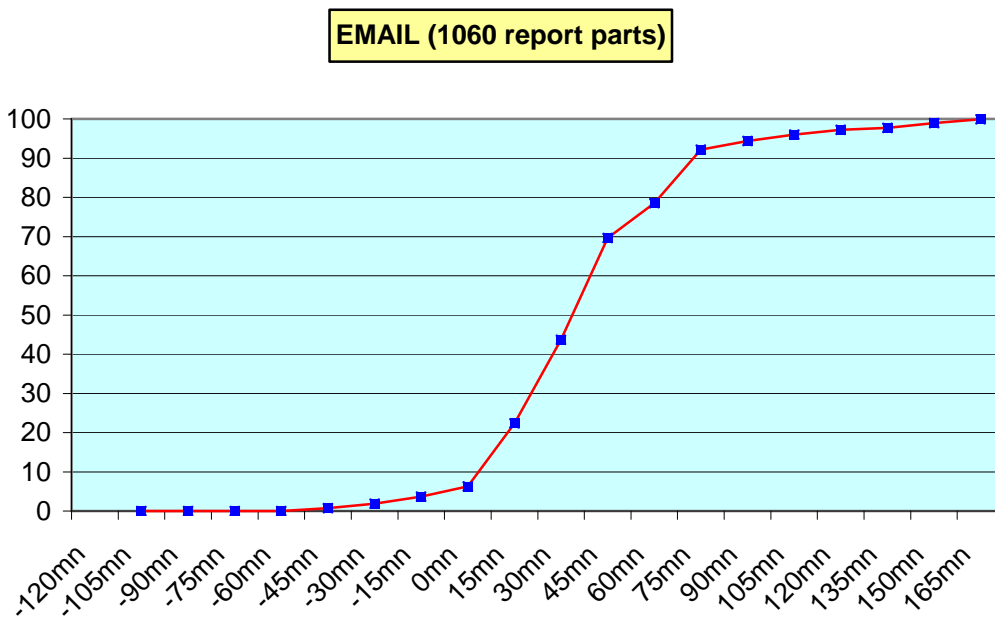
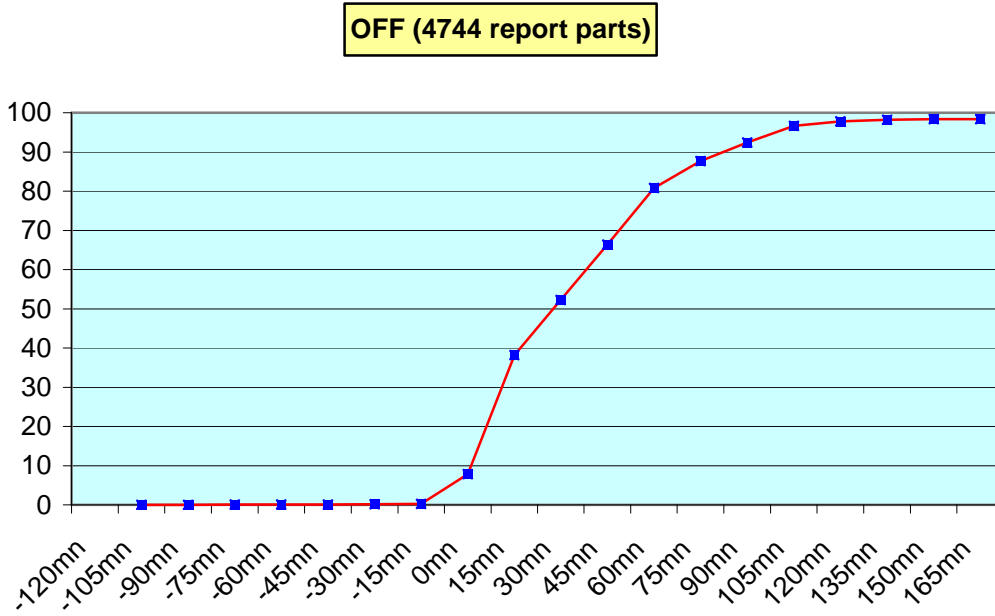
**Remark:** Email messages were excluded from the number of messages in error and from the relative percentage as values are regarded as not relevant. Not relevant percentages are due to not relevant values or to a total amount of data equal to zero.

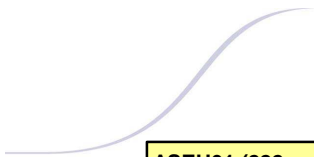
## 6. Global result of the syntactic check for the messages for each call sign.

Call-sign	Nb of messages received	Nb of messages in error	Percentage of messages in error	Nb of messages with operator action	Percentage of messages with operator action
ASEU01	222	0	0	0	0
ASEU02	297	0	0	0	0
ASEU03	210	0	0	0	0
ASEU04	290	0	0	0	0
ASEU05	248	0	0	0	0
ASDE01	352	0	0	0	0
ASDE02	383	0	0	0	0
ASDE03	338	0	0	0	0
ASDE04	312	0	0	0	0
DBLK	618	0	0	0	0
ASGB01	214	0	0	0	0
ASDK01	330	0	0	0	0
ASDK02	397	0	0	0	0
ASES01	83	0	0	0	0
ASFR1	232	0	0	11	4,74
ASFR2	266	0	0	0	0
ASFR3	244	0	0	0	0
ASFR4	203	0	0	5	2,46
JGQH	7	0	0	0	0
JNSR	576	0	0	0	0
ASDK3	333	0	0	0	0
Wrong or strange call-sign					
XXXXX	973	0	0	0	0
numer.	8	0	0	0	0

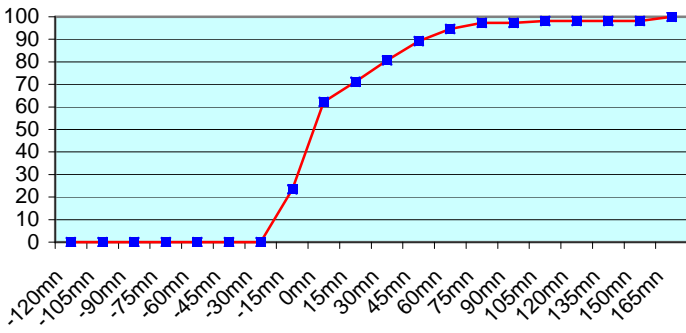
**Remark:** Data transmitted through email displayed an error rate close to 100% due to email syntax and were thus regarded as not relevant and excluded from errors total amount.

7. Mean time before the integration of the messages in the GTS in Toulouse. HH is the synoptic hour of reference.

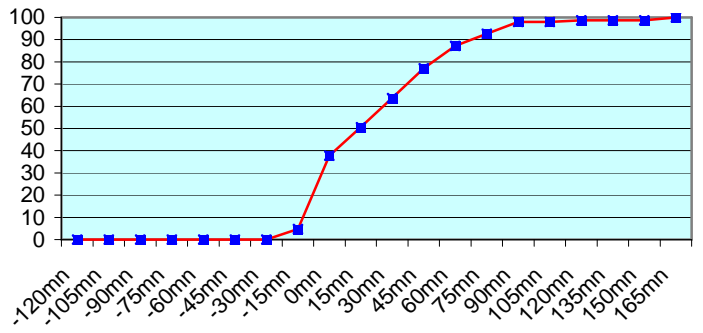




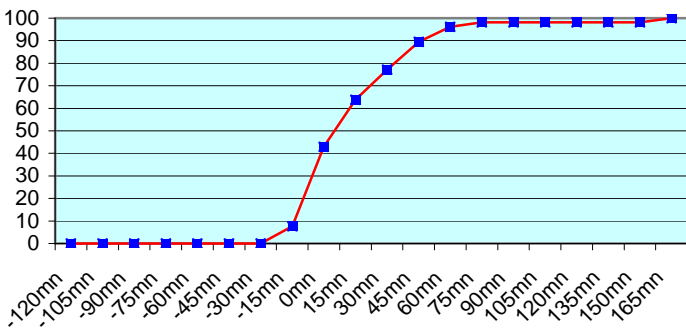
**ASEU01 (222 report parts) Offenbach 222**



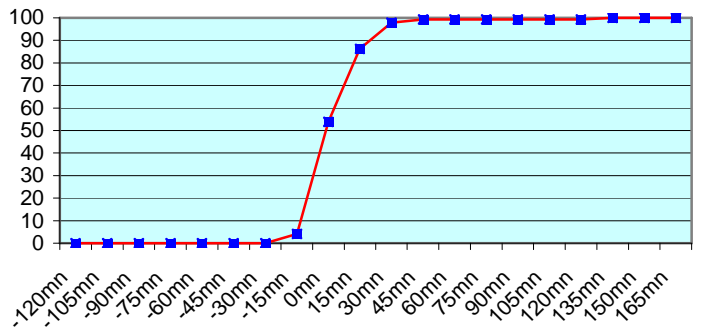
**ASEU02 (297 report parts) Offenbach 297**



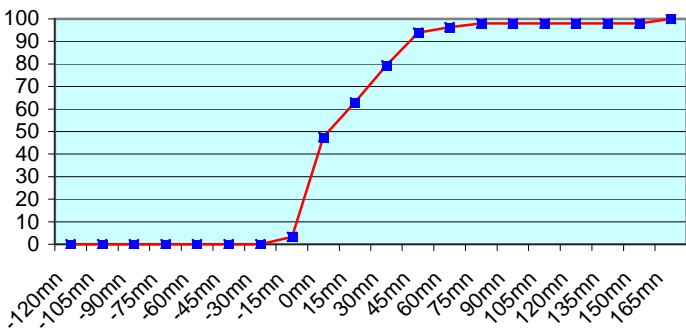
**ASEU03 (210 report parts) Offenbach 210**



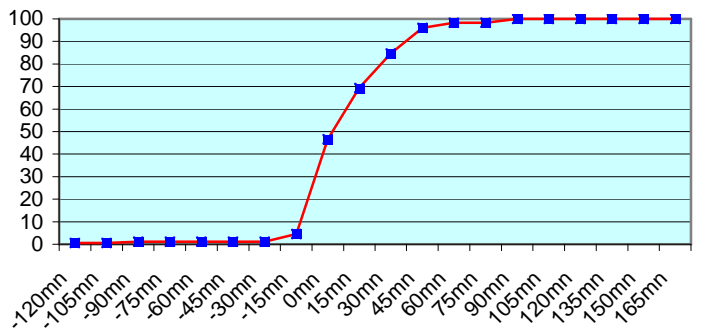
**ASEU04 (290 report parts) Offenbach 290**



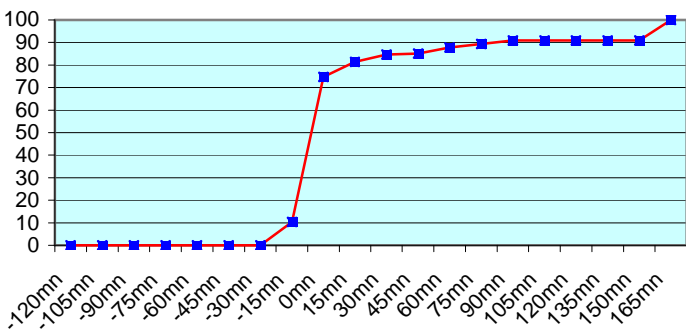
**ASEU05 (248 report parts) Offenbach 248**



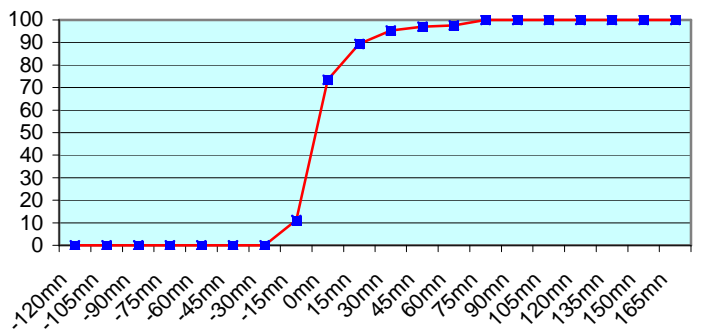
**ASDE01 (352 report parts) Offenbach 352**



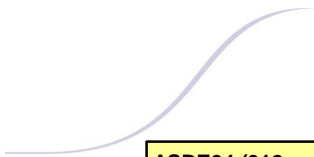
**ASDE02 (383 report parts) Offenbach 383**



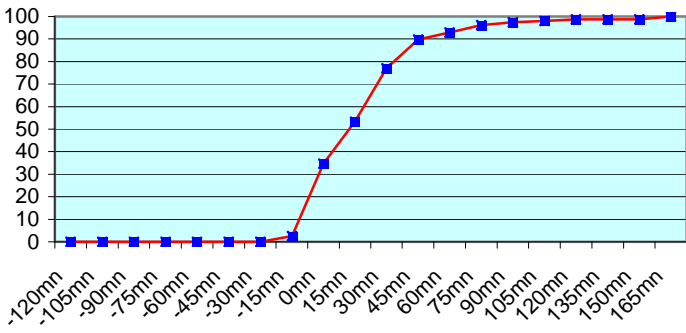
**ASDE03 (338 report parts) Offenbach 338**



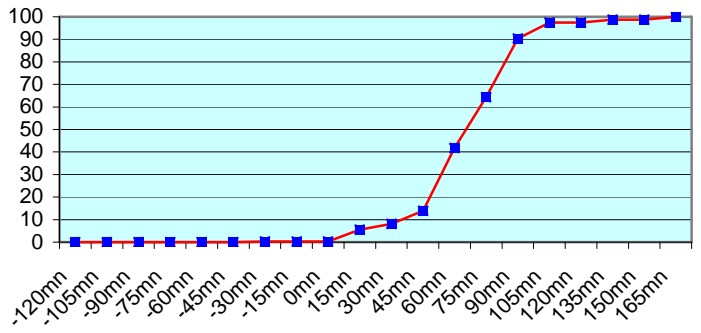




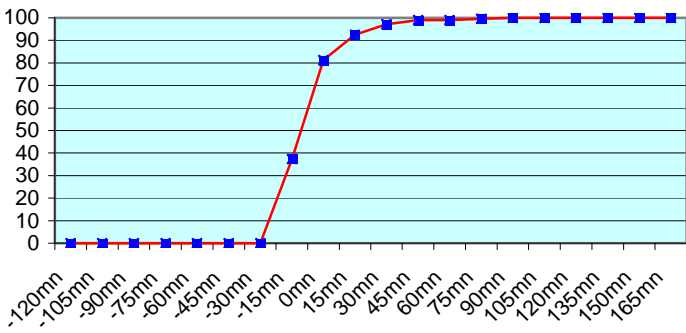
**ASDE04 (312 report parts) Offenbach 312**



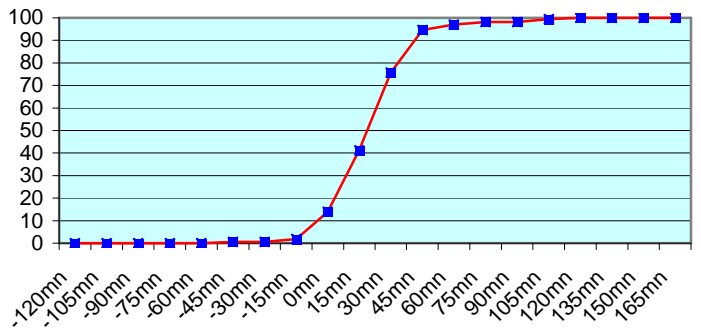
**DBLK (618 report parts) Offenbach 618**



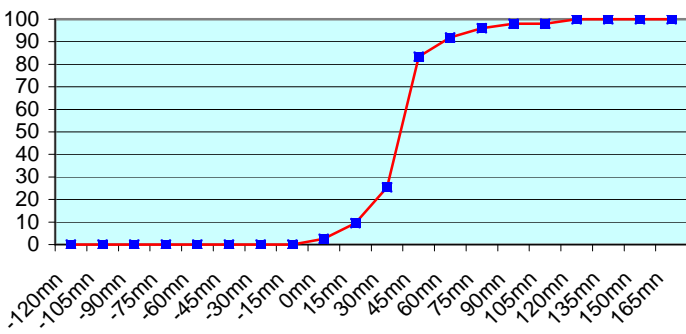
**ASGB01 (214 report parts) Offenbach 214**



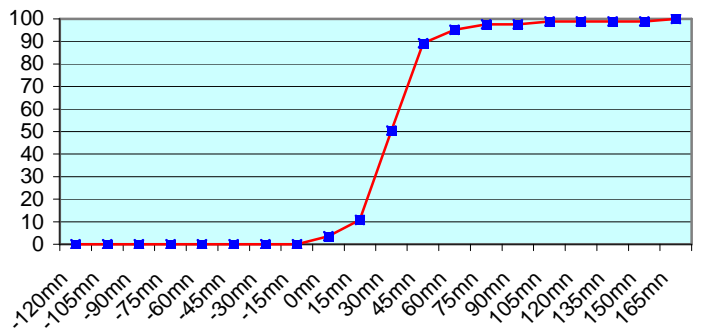
**ASDK01 (330 report parts) Offenbach 330**



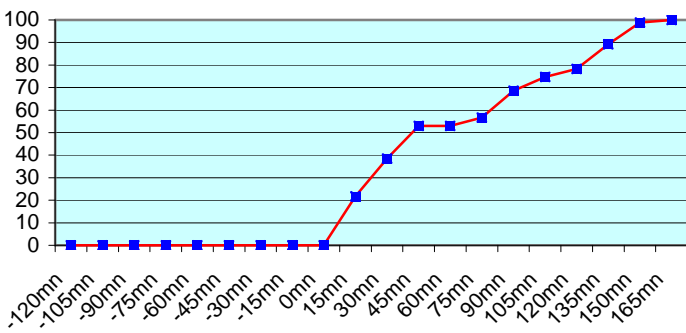
**ASDK02 (397 report parts) Offenbach 397**



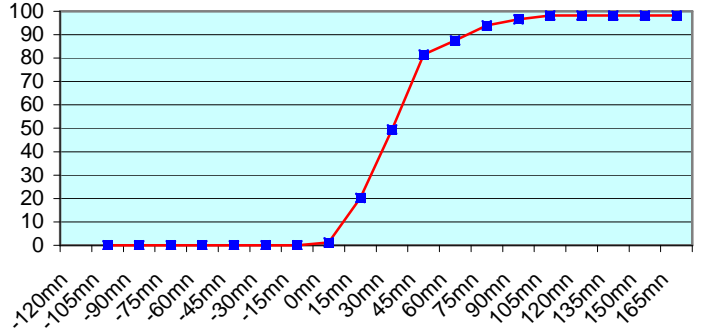
**ASDK3 (333 report parts) Offenbach 333**



**ASES01 (83 report parts) Email 83**

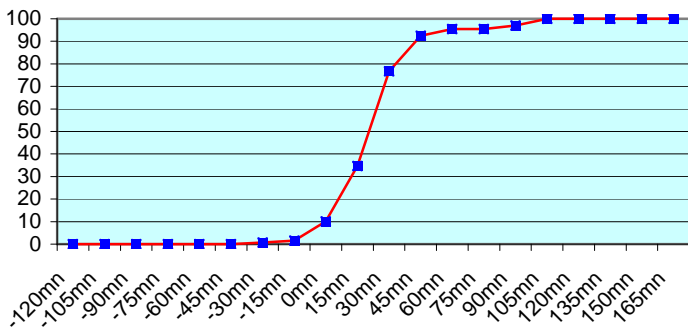


**ASFR1 (232 report parts) Email 221 with supervision 11**

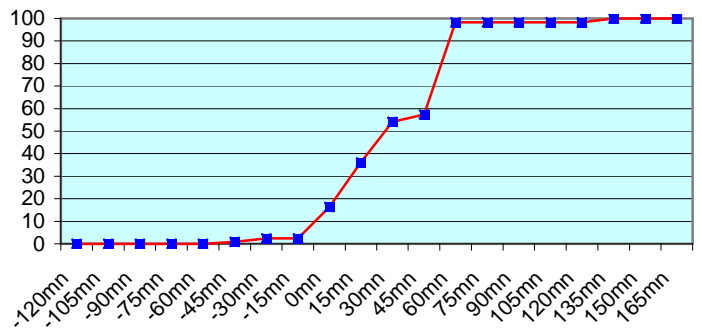




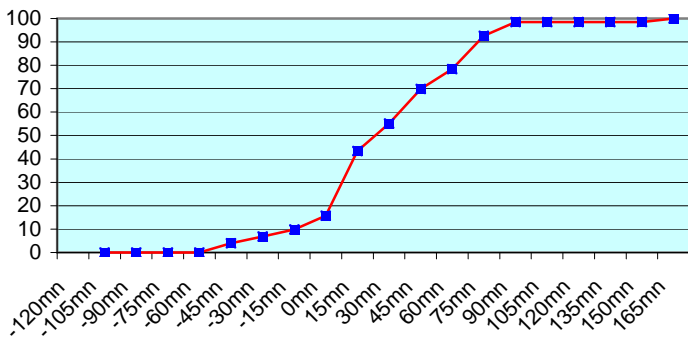
**ASFR2 (266 report parts) Email 266**



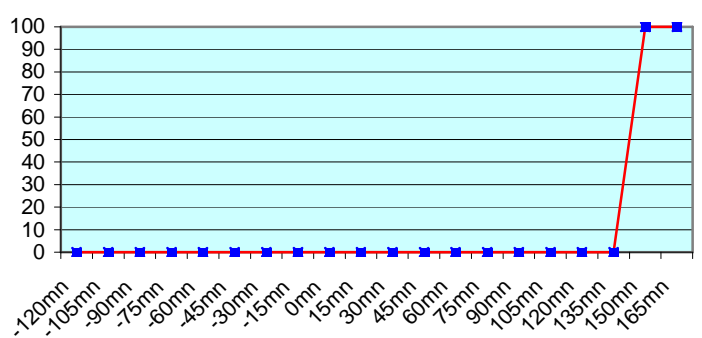
**ASFR3 (244 report parts) Email 244**



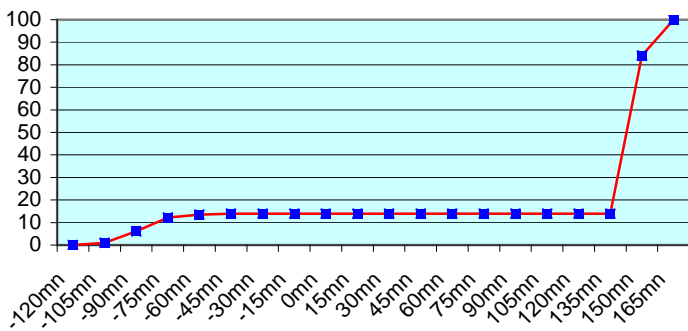
**ASFR4 (203 report parts) Email 197 with supervision 5**



**JGQH (7 report parts) Exeter 7**



**JNSR (576 report parts) Exeter 576**



During the three last months, ASES01 transmitted less messages and some were delayed. No particular problem was noticed concerning the other European ships.

Japanese ships follow a different procedure with an important shift between the sending of the message and the synoptic hour. So, no graphic was displayed about Exeter.

For any comment or remark please contact Météo-France Toulouse DSO/DOA department

Gérard Rey ([gerard.rey@meteo.fr](mailto:gerard.rey@meteo.fr))

Daniel Bouchara ([daniel.bouchara@meteo.fr](mailto:daniel.bouchara@meteo.fr))

Hugues Jardat ([hugues.jardat@meteo.fr](mailto:hugues.jardat@meteo.fr))